

# Alice Creek Fire

## Incident Action Plan

### Sunday September 17, 2017

MT-HLF-000179

FS P1K7QW17 (0115)

BLM K7QW

Day Operational Period 0700 -



Stop, Think, Talk, before Acting!



Incident Maps

WGS 84  
DD MM.MMM

**Great Basin Team 2**

Kim Martin  
Incident Commander


Planning Schedule

0700-Day Operational Briefing  
Alice Creek Fire ICP

## INCIDENT OBJECTIVES (ICS 202)

<b>1. Incident Name:</b>		<b>2. Operational Period:</b> DAY	
ALICE CREEK		Date/Time From: 09/17/2017 0700      SUN	Date/Time To: 09/17/2017 2100      SUN
<b>3. Objective(s):</b>			
Prevent and minimize damage to:			
<ul style="list-style-type: none"> <li>• Private property and National Forest infrastructure within the planning area.</li> <li>• Bull trout and cutthroat habitat on National Forest lands within the planning area.</li> <li>• Cultural resources, specifically on the Lewis and Clark Trail and the Road to the Buffalo in the Alice Creek Historic District.</li> <li>• For the entire fire area, identify highest probability of success utilizing natural barriers and a change to more favorable fuel type in order to avoid the high mortality in the timber, as well as unnecessary exposure to firefighters.</li> <li>• Utilize the opportunities provided by previous burns and the Scapegoat Wilderness and the adjacent Inventoried Roadless Area (Silver King-Falls Creek) to allow the fire to move away from values at risk and be the lowest priority for suppression actions.</li> <li>• Any suppression actions within the Scapegoat Wilderness and the adjacent Inventoried Roadless Area (Silver King-Falls Creek) will be compatible with wilderness management objectives.</li> <li>• Provide full suppression strategy on Montana DNRC &amp; Lewis and Clark County protection, as well as the southern perimeter of the fire on National Forest System lands where terrain allows and where firefighter safety will not be compromised.</li> </ul>			
<b>4. Operational Period Command Emphasis:</b>			
Utilize all your resources to anticipate possible challenges.			
<b>General Situational Awareness:</b>			
Base all actions on current and expected fire behavior.			
<b>5. Site Safety Plan Required?</b> Yes <input type="checkbox"/> No <input checked="" type="checkbox"/>			
<b>Approved Site Safety Plan(s) Located at:</b>			
<b>6. Incident Action Plan</b> (the items checked below are included in this Incident Action Plan):			
<input checked="" type="checkbox"/> ICS 202	<input type="checkbox"/> ICS 207	Other Attachments:	
<input checked="" type="checkbox"/> ICS 203	<input type="checkbox"/> ICS 208	<input checked="" type="checkbox"/> FIRE BEHAVIOR _____	
<input checked="" type="checkbox"/> ICS 204	<input checked="" type="checkbox"/> ICS 220	<input checked="" type="checkbox"/> 9-LINE MEDICAL PLAN _____	
<input checked="" type="checkbox"/> ICS 205	<input checked="" type="checkbox"/> Map/Chart	<input type="checkbox"/> _____	
<input type="checkbox"/> ICS 205A	<input checked="" type="checkbox"/> Weather Forecast/Tides/Currents	<input type="checkbox"/> _____	
<input checked="" type="checkbox"/> ICS 206			
<b>7. Prepared by:</b> STEVE JACKSON	<b>Position/Title:</b> PSC1	<b>Signature:</b>	
<b>8. Approved by Incident Commander:</b>		<b>Signature:</b>	
<b>ICS 202</b>		<b>Date/Time:</b> 09/16/2017 1800	
<b>IAP Page</b>			

## ORGANIZATION ASSIGNMENT LIST (ICS 203)

<b>1. Incident Name:</b>		<b>2. Operational Period: DAY</b>	
ALICE CREEK		Date/Time From: 09/17/2017 0700      SUN	Date/Time To: 09/17/2017 2100      SUN
<b>3. Incident Commander(s) and Command Staff:</b>		CHIEF	MEGAN TIMONEY
INCIDENT COMMANDER	KIM MARTIN	SUPPLY UNIT	HENRY HASSELHAN BOB HARPER
DEPUTY IC	PAUL BROYLES	FACILITIES UNIT	EARL SLACK JAMES HOLLAND
SAFETY OFFICER	LANEY CUTSHAW / FRED JOHNSON	GROUND SUPPORT UNIT	DAVE FRITZSCHE
MEDICAL UNIT LEADER	TIM EGAN	COMMUNICATIONS UNIT	SCOTT HARNESS
INFORMATION OFFICER	DAVID EAKER / BRIAN HARRIS PATTY BEAN	FOOD UNIT	LINDA HOLDER
LIAISON OFFICER	ERIK TAYLOR (T) DONN CHRISTIANSEN (T)	<b>7. Operations Section:</b>	
HUMAN RESOURCES		DAY OPS SECTION CHIEF	MIKE JOHNSTON
<b>4. Agency/Organization Representative(s):</b>		PLANNING OPS	ROD COLLINS
<b>Agency/Organization</b>	<b>Name</b>	<b>Branch</b>	<b>I</b>
MT-HLF AGENCY ADMINISTRATOR	SARAH MABEN	BRANCH DIRECTOR	PAUL HUTTA
MT-HLF ROCKY MOUNTAIN DISTRICT	MIKE MUNOZ	DIVISION/GROUP	D
MT-HLF LINCOLN DISTRICT	MICHAEL STANSBERRY	DIVISION/GROUP	K      SPENCER JOHNSTON
MONTANA DNRC	HOYT RICHARDS / ANDY BURGOYNE	<b>Branch</b>	<b>II</b>
MT-HLF READ	DAVE CALLERY	BRANCH DIRECTOR	CODY PEEL / ROBERT LOPEZ (T)
MT-HLF PLANNING READ	KRAIG LANG	DIVISION/GROUP	A / X      PILA MALOLO
BLM BUTTE	COREY MEIER	DIVISION/GROUP	P      CHAD HAYWARD
LEWIS & CLARK CO SHERIFF	LEO DUTTON	<b>7b. Air Operations Branch:</b>	
WOLF CREEK VFD	ROCKY INFANGER	AIR OPS BRANCH DIRECTOR	ERIC TAPLIN
AUGUSTA VFD	BOB CHESMERE	AIR ATTACK SUPERVISOR	CHRIS VERO
LINCOLN VFD	ZACH MUSE	AIR SUPPORT SUPERVISOR	BLAKE FORD
<b>5. Planning Section:</b>		<b>8. Finance/Administration Section:</b>	
CHIEF	STEVE JACKSON	CHIEF	CAROL BASS
RESOURCES UNIT	CHRIS JOHNSON	TIME UNIT	SHARON HOLMES
DEMOBILIZATION UNIT	LORIE PRICE	PROCUREMENT UNIT	DAN MYERS
STATUS CHECKIN	LORIE PRICE	COMPENSATION UNIT	ROGER WATERS
SITUATION UNIT	JOSH RELPH DAN OSTERKAMP (T)	COST UNIT	GEORGIA COWAN (T)
GIS SPECIALIST	BRAD JESSOP		
TRAINING SPECIALIST	DON WASHCO		
TECHNOLOGY SUPPORT SPECIALIST	ALEX PARK		
INCIDENT METEOROLOGIST			
FIRE BEHAVIOR ANALYST			
DOCUMENTATION UNIT	RANDY KYES (T)		
<b>6. Logistics Section:</b>			
<b>9. Prepared By:</b>	<b>Name:</b> CHRIS JOHNSON	<b>Position/Title:</b> RESL	<b>Signature:</b>
ICS 203	IAP Page	Date/Time: 09/16/2017 2100	



## Fire Weather Forecast

**FORECAST NO:** 20  
**PREDICTION FOR:** Day Shift  
**DATE:** September 17<sup>th</sup>, 2017  
**FORECAST ISSUED:** 1800 September 16<sup>th</sup>, 2017

**NAME OF FIRE:** Alice Creek Fire  
**UNIT:** Lewis and Clark National Forest  
**Incident Meteorologist:** Bob Nester

A handwritten signature in black ink, appearing to read "Bob Nester", written over a horizontal line.

---

**WEATHER DISCUSSION:** After a very cold start to the morning high pressure will enter the region resulting in warmer temperatures and some sunshine. High temperatures today in the mid 50s are still 15 degrees below normal.

**WEATHER FORECAST:**

**WEATHER:** A mix of sun and clouds.

**TEMPERATURES:** 5000 ft – 52-57

**20 FT WINDS:** Northeast up to 10 mph.

**CWR:** 0%

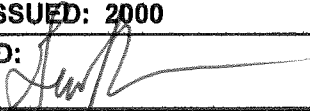
---

**TONIGHT:** Clear and cold. Lows in the upper 30s to lower 40s

**MONDAY...**

Increasing clouds with a chance of showers and a thunderstorm in the afternoon. Highs in the mid and upper 50s. Southwest winds 5-10 mph.

# FIRE BEHAVIOR FORECAST

FORECAST NUMBER: 20	TYPE OF FIRE: Wildfire
FIRE NAME: Alice Creek	OPERATIONAL PERIOD: September 17, 2017
DATE ISSUED: September 15, 2017	TIME ISSUED: 2000
UNIT: Helena-Lewis & Clark National Forest	SIGNED:  Gary Brown FBAN

## INPUTS

**WEATHER SUMMARY:** See Attached Fire Weather Forecast  
Hopefully today clears up and the sun makes a brief appearance.

**FUEL CONDITIONS:** Past rain events have significantly increased the moisture in all sizes of fuels. Fine fuels will be absorbing this moisture driving fuel moisture beyond the moisture of extinction, the point at which fire will no longer support combustion.

## OUTPUTS

**GENERAL FIRE BEHAVIOR:** 1hr fuels 25+%, 6 mph midflame wind, 40% slope

Fuels Model	Rate of Spread (chains/hour)		Flame Length (feet)		Spotting Distance
	Head	Backing	Head	Backing	
Grass	0	0	0	0	0
Timber	0	0	0	0	0

Trust factor in these number: High, multiple inches of rain the past few days has really helped.

## SPECIFIC FIRE BEHAVIOR

**ALL DIVISIONS:** Very little fire behavior is expected.

## AIR OPERATIONS

With any luck air operations will be an option later in the day following the burning off of any morning cloud cover.

## SPECIAL MESSAGE

Thank you all very much for the opportunity to travel with GB Team 2 this past summer, this was by far the best way I could have finished my career. You're a great bunch of folks.

## Division/Group Assignment List (ICS 204 WF)

<b>1. Incident Name:</b>				<b>3.</b>			
ALICE CREEK				<b>I</b>		<b>D</b>	
<b>2. Operational Period:</b> <b>DAY</b>							
Date/Time From: 09/17/2017 0700                      SUN		Date/Time To: 09/17/2017 2100                      SUN					
<b>4. Operations Personnel</b>							
BRANCH DIRECTOR		PAUL HUTTA		DAY OPS SECTION CHIEF		MIKE JOHNSTON	
NIGHT OPS SECTION CHIEF				PLANNING OPS		ROD COLLINS	
AIR OPS BRANCH DIRECTOR		ERIC TAPLIN		DIVISION/GROUP SUPERVISOR			
<b>5. Resources Assigned this Period</b>							
Strike Team / Task Force / Resource Designator		LWD	Leader	Number Persons	Drop Off PT./Time	Pick Up PT./Time	
<b>6. Control Operations/Work Assignments:</b>							
** Unstaffed - Monitor fire progression by air and ground resources.							
<b>7. Special Instructions:</b>							
<ul style="list-style-type: none"> <li>• Invasive species are present in water sources East of the Continental Divide and NOT on the West. (See READ Message)</li> <li>•</li> <li>• Be aware of important cultural sites in and around Alice Creek. (See READ Message)</li> <li>•</li> <li>• Due to tree mortality assess every situation prior to entering area, if questionable mitigate risk or Do No Enter.</li> </ul>							
<b>8. Division/Group Communication Summary</b>							
Function	Channel	RX Frequency N/W	RX Tone/NAC	TX Frequency N/W	TX Tone/NAC	Mode	
	SEE		COMMO		PLAN		
<b>9. Prepared By (Resource Unit Leader)</b>			<b>Approved By (Planning Section Chief)</b>			<b>Date</b>	<b>Time</b>
CHRIS JOHNSON RESL			STEVE JACKSON PSC1			09/16/2017	2100

### Division/Group Assignment List (ICS 204 WF)

1. Incident Name:			3.			
ALICE CREEK			I	K		
2. Operational Period: DAY						
Date/Time From: 09/17/2017 0700 SUN		Date/Time To: 09/17/2017 2100 SUN				
<b>4. Operations Personnel</b>						
BRANCH DIRECTOR	PAUL HUTTA		DAY OPS SECTION CHIEF	MIKE JOHNSTON		
NIGHT OPS SECTION CHIEF			PLANNING OPS	ROD COLLINS		
AIR OPS BRANCH CHIEF	ERIC TAPLIN		DIVISION/GROUP SUPERVISOR	SPENCER JOHNSTON		
<b>5. Resources Assigned this Period</b>						
Strike Team / Task Force / Resource Designator	LWD	Leader	Number Persons	Drop Off PT./Time	Pick Up PT./Time	
6. Control Operations/Work Assignments:						
<p><b>Task:</b> DISASSEMBLE AND BACKHAUL ALL FIRE SUPPRESSION EQUIPMENT INCLUDING DROP POINT SIGNS, FLAGGING, AND TRASH THAT WE CAN ACCESS WITHOUT DAMAGING ROADS.</p> <p><b>PURPOSE:</b> TO CLEAN FIRE AREA OF SUPPRESSION RELATED ITEMS.</p> <p><b>END STATE:</b> JURISDICTIONAL AGENCIES ARE LEFT WITH MINIMAL CLEANUP.</p>						
7. Special Instructions:						
<p>Invasive species are present in water sources East of the Continental Divide and NOT on the West. (See READ Message)</p> <p>Be aware of important cultural sites in and around Alice Creek. (See READ Message)</p> <p>Due to tree mortality assess every situation prior to entering area, if questionable mitigate risk or Do No Enter.</p>						
<b>8. Division/Group Communication Summary</b>						
Function	Channel	RX Frequency N/W	RX Tone/NAC	TX Frequency N/W	TX Tone/NAC	Mode
	SEE		COMMO		PLAN	
9. Prepared By (Resource Unit Leader)		Approved By (Planning Section Chief)		Date		Time
CHRIS JOHNSON RESL		STEVE JACKSON PSC1		09/16/2017		2100

## Division/Group Assignment List (ICS 204 WF)


<b>1. Incident Name:</b>				<b>3.</b>			
ALICE CREEK				<b>II</b>		<b>A / X</b>	
<b>2. Operational Period: DAY</b>							
Date/Time From: 09/17/2017 0700      SUN		Date/Time To: 09/17/2017 2100      SUN					
<b>4. Operations Personnel</b>							
<b>BRANCH DIRECTOR</b>		CODY PEEL ROBERT LOPEZ (T)		<b>DAY OPS SECTION CHIEF</b>		MIKE JOHNSTON	
<b>NIGHT OPS SECTION CHIEF</b>				<b>PLANNING OPS</b>		ROD COLLINS	
<b>AIR OPS BRANCH DIRECTOR</b>		ERIC TAPLIN		<b>DIVISION/GROUP SUPERVISOR</b>		PILA MALOLO	
<b>5. Resources Assigned this Period</b>							
Strike Team / Task Force / Resource Designator		LWD	Leader	Number Persons	Drop Off PT./Time	Pick Up PT./Time	
ENG6 ID-CTF 623 E-1106		09/24	GORDON WEGLEY	3	ALICE CREEK ICP AT HOON RANCH/0700	ALICE CREEK ICP PRIOR TO/1500	
ENG6 CTF 661 E-1139		09/26	JAMES TELFORD	3	ALICE CREEK ICP AT HOON RANCH/0700	ALICE CREEK ICP PRIOR TO/1500	
SKG3 FLATHEAD 166^ E-1162		09/24	COBEY CALDBECK	2	ALICE CREEK ICP AT HOON RANCH/0700	ALICE CREEK ICP PRIOR TO/1500	
GRD I KNOW JACK E-1152		09/27	BETTY EISENZIMER	2	ALICE CREEK ICP AT HOON RANCH/0700	ALICE CREEK ICP PRIOR TO/1500	
TFLD O-1304		09/28	NICK SCHENCK	1	ALICE CREEK ICP AT HOON RANCH/0700	ALICE CREEK ICP PRIOR TO/1500	
READ O-1095 (LOCAL)			DAVID CALLERY	1	ALICE CREEK ICP AT HOON RANCH/0700	ALICE CREEK ICP PRIOR TO/1500	
SOF2 O-1194.58		09/23	MARK WISEMAN	1	ALICE CREEK ICP AT HOON RANCH/0700	ALICE CREEK ICP PRIOR TO/1500	
AMBU MEDIC 9 (ELK MEADOWS / HWY 200)		09/30	EMTP	2	ALICE CREEK ICP AT HOON RANCH/0700	ALICE CREEK ICP PRIOR TO/1500	
<b>6. Control Operations/Work Assignments:</b>							
<p><b>Task:</b> DISASSEMBLE AND BACKHAUL ALL FIRE SUPPRESSION EQUIPMENT INCLUDING DROP POINT SIGNS, FLAGGING, AND TRASH THAT WE CAN ACCESS WITHOUT DAMAGING ROADS.</p> <p><b>PURPOSE:</b> TO CLEAN FIRE AREA OF SUPPRESSION RELATED ITEMS.</p> <p><b>END STATE:</b> JURISDICTIONAL AGENCIES ARE LEFT WITH MINIMAL CLEANUP.</p>							
<b>7. Special Instructions:</b>							
<p>Invasive species are present in water sources East of the Continental Divide and NOT on the West. (See READ Message)                  Be aware of important cultural sites in and around Alice Creek. (See READ Message)                  Due to tree mortality assess every situation prior to entering area, if questionable mitigate risk or Do No Enter.</p>							
<b>8. Division/Group Communication Summary</b>							
Function	Channel	RX Frequency N/W	RX Tone/NAC	TX Frequency N/W	TX Tone/NAC	Mode	
	SEE		COMMO		PLAN		
<b>9. Prepared By (Resource Unit Leader)</b>			<b>Approved By (Planning Section Chief)</b>		<b>Date</b>	<b>Time</b>	
CHRIS JOHNSON RESL			STEVE JACKSON PSC1		09/16/2017	2100	



### Division/Group Assignment List (ICS 204 WF)

<b>1. Incident Name:</b>				<b>3.</b>			
ALICE CREEK				<b>II</b>		<b>P</b>	
<b>2. Operational Period: DAY</b>							
Date/Time From: 09/17/2017 0700      SUN		Date/Time To: 09/17/2017 2100      SUN					
<b>4. Operations Personnel</b>							
<b>BRANCH DIRECTOR</b>		CODY PEEL ROBERT LOPEZ (T)		<b>DAY OPS SECTION CHIEF</b>		MIKE JOHNSTON	
<b>NIGHT OPS SECTION CHIEF</b>				<b>PLANNING OPS</b>		ROD COLLINS	
<b>AIR OPS BRANCH DIRECTOR</b>		ERIC TAPLIN		<b>DIVISION/GROUP SUPERVISOR</b>		CHAD HAYWARD	
<b>5. Resources Assigned this Period</b>							
Strike Team / Task Force / Resource Designator		LWD	Leader	Number Persons	Drop Off PT./Time	Pick Up PT./Time	
ENG6 SHF 644 E-1130		09/22	JACOB BINNS	3	ALICE CREEK ICP AT HOON RANCH/0700	ALICE CREEK ICP PRIOR TO/1500	
DOZ2 THOMPSON E-1004		09/22	FRANK THOMPSON	1	ALICE CREEK ICP AT HOON RANCH/0700	ALICE CREEK ICP PRIOR TO/1500	
HEQB O-1195		09/21	JAMES TERRY	1	ALICE CREEK ICP AT HOON RANCH/0700	ALICE CREEK ICP PRIOR TO/1500	
HEQB (T) O-1196		09/21	CHRIS PETERSEN	1	ALICE CREEK ICP AT HOON RANCH/0700	ALICE CREEK ICP PRIOR TO/1500	
SOF2 O-1194.58		09/23	MARK WISEMAN	1	ALICE CREEK ICP AT HOON RANCH/0700	ALICE CREEK ICP PRIOR TO/1500	
READ O-1095			DAVID CALLERY	1	ALICE CREEK ICP AT HOON RANCH/0700	ALICE CREEK ICP PRIOR TO/1500	
<b>6. Control Operations/Work Assignments:</b>							
<p><b>Task:</b> DISASSEMBLE AND BACKHAUL ALL FIRE SUPPRESSION EQUIPMENT INCLUDING DROP POINT SIGNS, FLAGGING, AND TRASH THAT WE CAN ACCESS WITHOUT DAMAGING ROADS.</p> <p><b>PURPOSE:</b> TO CLEAN FIRE AREA OF SUPPRESSION RELATED ITEMS.</p> <p><b>END STATE:</b> JURISDICTIONAL AGENCIES ARE LEFT WITH MINIMAL CLEANUP.</p>							
<b>7. Special Instructions:</b>							
<p>Invasive species are present in water sources East of the Continental Divide and NOT on the West. (See READ Message)</p> <p>Be aware of important cultural sites in and around Alice Creek. (See READ Message)</p> <p>Due to tree mortality assess every situation prior to entering area, if questionable mitigate risk or Do No Enter.</p>							
<b>8. Division/Group Communication Summary</b>							
Function	Channel	RX Frequency N/W	RX Tone/NAC	TX Frequency N/W	TX Tone/NAC	Mode	
	SEE		COMMO		PLAN		
<b>9. Prepared By (Resource Unit Leader)</b>			<b>Approved By (Planning Section Chief)</b>		<b>Date</b>	<b>Time</b>	
CHRIS JOHNSON RESL			STEVE JACKSON PSC1		09/16/2017	2100	



INCIDENT RADIO COMMUNICATIONS PLAN I-205				1. INCIDENT NAME		2. DATE/TIME PREPARED		3. OPERATIONAL PERIOD DATE/TIME			
				ALICE CREEK FIRE		9/16/17 0630		9/17/2017			
4. BASIC RADIO CHANNEL UTILIZATION											
Ch #	Function	Channel Name	Assignment	RX Freq	N/W	RX Tone/NAC	TX Freq	N/W	TX Tone/NAC	Mode Analog (A) Digital (D) Mixed (M)	Remarks
1		HNFDIR7		171.1375	N		171.1375	N	123.0	A	*SILVER KING RPTR RX TONE
2		FOREST SERVICE REPEATERS*		171.1375	N		164.1500	N	100.0	A	
3		CREW ONE		168.7250	N		168.7250	N	131.8	A	
4		FIRE TAC		167.1125	N		167.1125	N	146.2	A	
5		GREEN		171.4750	N		171.4750	N	103.5	A	
6	A/G	YELLOW		151.2200	N		151.2200	N	141.3	A	
7	A/G	ORANGE		151.4000	N		151.4000	N	110.9	A	
8		DNRC STO		151.2500	N		159.2550	N	167.9	A	*GRANITE BUTTE RPTR RX TONE
9		DNRC ROG		151.2650	N		159.4050	N	192.8	A	*STONEWALL RPTR RX TONE
10		LIN VFD		154.2200	N		154.2200	N	114.8	A	*OGDEN MTN RPTR RX TONE
11	A/G	AG66		166.6750	N		166.6750	N		A	
12	A/G	AG13		167.4250	N		167.4250	N		A	
13		MAROON		154.2800	N		154.2800	N	156.7	A	
14		RED		154.0700	N		154.0700	N	156.7	A	
15		SCARLET		154.2950	N		154.2950	N	156.7	A	
16		CORAL		154.2650	N		154.2650	N	156.7	A	
5. Special Instructions:											
6. I-205 Prepared By: Communications Unit Leader				Name: Scott Harness		Signature: 		COM			

# HEALTH AND SAFETY MESSAGE

*SAFETY* starts with *YOU* PREDICTABLE IS PREVENTABLE

September 17, 2017

INCIDENT: Alice Creek

DATE: Sept 16, 2017 TIME: 1500

## Major Hazards and Risks:

- **ACCOUNTABILITY:** Each resource on the fire has a supervisor. Know and coordinate with him/her. Establish relationships with local resources working in your area.
- **DRIVING:** Drive defensively, Be aware of winter road conditions, Be alert and watch for other vehicles, wildlife and livestock.
- **COLD WET WEATHER:** Wear rain gear. Dress in layers. As much as possible keep clothing and bedding dry. Use caution when driving on both surfaced and unsurfaced roads.

## Fire Order of the Day:

*Give clear instructions and be sure they are understood.*

- Safety is of utmost importance.
- Constantly review and apply the Risk Management Process (see below or IRPG pg. 1)
  - Ensure all are involved in your briefing and within your span of control
  - Acknowledge messages and instructions

## Safety Accountability

As we break camp and travel to our homes, apply the following accountability principles.

- Maintain communications with your supervisor
- Take responsibility for resources that are assigned to you
- Account for the location and safety of your subordinates



## Medical and Health Issues?



If you are having health issues please visit the Medical Unit. They are staffed with qualified paramedics.

**Medical Unit can provide you with over the counter remedies for:**

- |                           |                      |
|---------------------------|----------------------|
| + Coughs, colds and sinus | + Upset stomach      |
| + Headaches               | + Rashes and chafing |
| + Health hygiene products | + Hand sanitizer     |
| + Allergies               | + Chapped lips       |

**The Medical Unit can provide treatment for:**

- |                                    |                   |
|------------------------------------|-------------------|
| + Blisters                         | + Sprains         |
| + Insect bites                     | + Eye irritations |
| + Slivers                          | + Minor burns     |
| + Minor Cuts, abrasions contusions |                   |

Medical Unit can assist you in getting help for major medical needs

## Driving Home

As you complete this assignment and are returning home, please drive with caution and obey all traffic rules.



**Your Safety Team:** Laney Cutshaw, Fred Johnson



## **Fatigue/Stress**

*Firefighter Health & First Aid*

Accumulated (Chronic) Fatigue is defined as fatigue from which normal rest does not produce recovery. Accumulated fatigue is often caused by extended periods of stress with inadequate recovery periods, which results in decreased productivity, compromised immune function, and reduced alertness. Fatigued workers perform poorly, behave carelessly, tolerate greater errors and become inattentive. Chronic fatigue often results in increased stress, which may present itself through certain behavioral and physiological indicators, such as those described below:

- ◆ Behavioral indicators
  - Decreased motivation and low morale
  - Increased irritability and depression
- ◆ Physiological indicators
  - Confused, poor problem solving
  - Poor abstract thinking
  - poor attention/decisions
  - poor concentration/memory
  - extreme emotional responses
  - social/behavioral changes
- ◆ Recommendations for chronic fatigue/stress are:
  - Take longer periods of rest/recovery
  - Ensure that workers are adequately rested before they begin work shifts
  - Provide periodic rest breaks to allow physical and mental recovery
  - Alternate between heavy and light tasks
  - Eat well-balanced meals regularly, with energy supplements during periods of high exertion
  - Maintain hydration
  - Ensure workers maintain good personal hygiene
  - Maintain high standards of physical fitness and work capacity
  - In extreme cases, personnel may need to be relieved of their duties

**References:**

Wildland Firefighter Health & Safety Report, Missoula Technology & Development Center

1)Spring 2004

2)Fall 2000

3)Fatigue Awareness PowerPoint

CISM Information Pamphlet, International Critical Incident Stress Foundation, [www.icisf.org](http://www.icisf.org)

**Have an idea? Have feedback? Share it.**

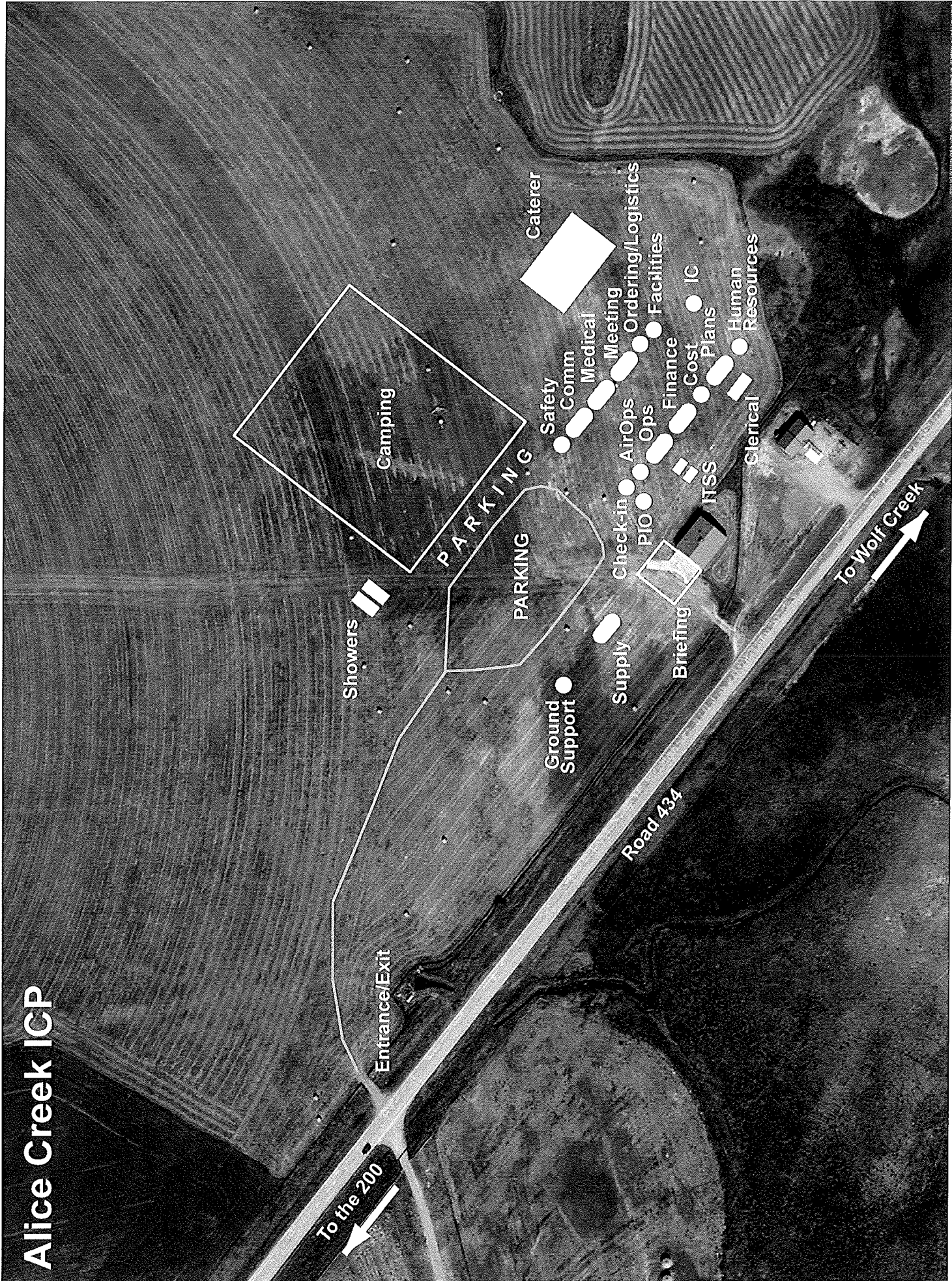
EMAIL | Facebook | MAIL: 6 Minutes for Safety Subcommittee • 3833 S. Development Ave • Boise, ID 83705 | FAX: 208-387-5250

## INCIDENT SAFETY ANALYSIS 215a

Alice Creek / P1K7QW17 - Sunday, September 17, 2017

8. Location	9. Hazard	6. Control or Abatement Action (Engineering, Administrative, PPE, Avoidance, Education, etc)
All	Hazard Trees	<ul style="list-style-type: none"> <li>~ Follow "Hazard Tree Safety" guidelines, IRPG page 22.</li> <li>~ Post lookouts, or use a spotter in mop-up areas with personnel.</li> <li>~ Don't park vehicles or take breaks in high concentrations of hazard trees.</li> <li>~ Establish trigger points for disengagement during high wind events.</li> <li>~ Remember that the hazard zone extends a minimum of 2 1/2 tree heights.</li> </ul>
All	Driving & Traffic	<ul style="list-style-type: none"> <li>~ Practice "Defensive Driving" techniques traveling on all roads and city streets.</li> <li>~ Use spotters when backing.</li> <li>~ Honk horn to alert personnel when backing.</li> <li>~ Keep clutter off dash and inside cab.</li> <li>~ Follow Driving LCES (Lights, Chock blocks, Emergency brake, Seat belts.</li> <li>~ Always use headlights.</li> <li>~ Yield to pedestrians and bicycles.</li> <li>~ Observe posted speed limits.</li> <li>~ Use the 3 second rule for following distance when driving.</li> <li>~ Use chock blocks, turn wheels into hill.</li> <li>~ Avoid distractions (eating, cell phones, radio).</li> <li>~ Ensure that windshields are kept clean of dust and bugs.</li> <li>~ Ensure vehicle is in good repair</li> </ul>
All	Communications	<ul style="list-style-type: none"> <li>~ Maintain communication with aviation resources, and suppression organization.</li> <li>~ Ensure all know frequency and protocol for contacting resources.</li> <li>~ Utilize the ICS 205.</li> <li>~ Utilize human repeaters when working in dead spots.</li> </ul>
All	Injury & Medical Emergency	<ul style="list-style-type: none"> <li>~ Assist injured employee appropriate medical care.</li> <li>~ Use EMT's on Division for initial care.</li> <li>~ Contact incident communications for incident within an incident (IWI)</li> <li>~ Follow the 9 line to communicate IWI information</li> <li>~ Follow medical protocol as outlined in ICS-206 &amp; IRPG Pgs 99-108</li> </ul>
All	Snakes	<ul style="list-style-type: none"> <li>~ If you hear a rattle snake, freeze, locate the snake, step back and avoid. Snake will usually try to escape</li> <li>~ Watch where you are walking</li> <li>~ Check the other side before stepping over an object</li> <li>~ When walking, use your tool ahead of you to reveal a hidden snake</li> <li>~ Look before reaching or stepping</li> <li>~ Most bites occur when someone is trying to kill, capture or play with a snake</li> <li>~ If bitten, get help while keeping as calm as possible</li> </ul>
All	Chain Saw Operations	<ul style="list-style-type: none"> <li>~ Follow "Hazard Tree Safety" guidelines, IRPG page 22</li> <li>~ Look up, Look down, Look around for hazard tree indicators.</li> <li>~ Only fell and buck trees within your expertise, and training.</li> <li>~ Follow "Procedural Felling Operations" on page 79 in IRPG.</li> <li>~ Do not fall trees during high wind events.</li> <li>~ Ensure proper use of all required PPE.</li> </ul>
All	Heavy Equipment Operations	<ul style="list-style-type: none"> <li>~ Ensure communications are established with operators.</li> <li>~ Use hand signals if other communications are unavailable.</li> <li>~ Maintain a 50'-100' exclusion area around equipment and increase it to 1 1/2 times tree height when in timber.</li> <li>~ Use a spotter when backing.</li> <li>~ Avoid working below heavy equipment.</li> </ul>
All	Mop-up & Rehab	<ul style="list-style-type: none"> <li>~ Do not work above or below personnel during rehab/mop-up operations.</li> <li>~ Alert crew personnel of rolling debris by yelling to affected individuals.</li> <li>~ Position debris that could roll vertically on slope.</li> <li>~ Wear eye protection.</li> <li>~ Minimize exposure to snags</li> <li>~ Avoid complacency</li> </ul>
All	Wildlife & Livestock	<ul style="list-style-type: none"> <li>~ Montana is an open range state. Cattle very likely will be on the roads</li> <li>~ Watch out for wildlife &amp; livestock inside fire area and along roadways.</li> <li>~ Drive defensively, slow down for blind turns</li> <li>~ Clean up all debris and trash during each operational period.</li> </ul>
All	Bears	<ul style="list-style-type: none"> <li>~ Pack all uneaten food back to camp.</li> <li>~ No food or attractants in tents.</li> <li>~ Back haul all trash as soon as possible</li> <li>~ Avoid confrontations if at all possible</li> <li>~ Consider issuing bear spray to all line personnel as recommended by the local unit</li> <li>~ Store all food and garbage in bear proof containers</li> </ul>

# Alice Creek ICP



## MEDICAL PLAN (ICS 206 WF)

1. Incident/Project Name		2. Operational Period				
<b>Alice Creek Fire</b>		<b>9/17/17</b>		<b>DAY 0700 – 2100</b>		
3. Ambulance Services						
Name	Complete Address	Phone & EMS Frequency	Advanced Life Support (ALS) YesNo			
Augusta Volunteer Ambulance	Augusta, MT	406-463-2299		NO		
Lincoln Volunteer Ambulance	Lincoln, MT	406-362-4377		NO		
Teton County Ambulance	Choteau, MT	406-466-5552		NO		
St. Peter's Ambulance Service	Helena, MT	406-444-2228 24 Hour	YES			
Great Falls Emergency Services	Great Falls, MT	406-453-5300	YES			
4. Air Ambulance Services						
Name	Phone	Type of Aircraft & Capability				
Reach Air Medical Helena, MT	800-338-4045	ALS Medical Helicopter 1 Patient Capacity Fixed Wing				
Mercy Flight Great Falls, MT	800-972-4000	ALS Medical Helicopter 1 Patient Capacity Fixed Wing				
Life Flight Network Missoula, MT	800-232-0911	ALS Medical Helicopter 1 Patient Capacity Fixed Wing				
Military: Montana National Guard Great Falls, MT	Requested through Great Falls Dispatch 406-731-5300	Hoist and night flight				
Two Bear Air Whitefish, MT	Requested through Flathead County Sheriff 406-758-5610	Hoist and night flight Minimum BLS				
Alert Air Ambulance Kalispell, MT	406-752-9797	ALS Medical Helicopter 1 Patient Capacity Fixed Wing				
5. Hospitals						
Name Complete Address	GPS Datum – WGS 84 Coordinate Standard Degrees Decimal Minutes DD° MM.MMM' N - Lat DD° MM.MMM' W - Long	Travel Time Air Gnd		Phone	Helipad YesNo	Level of Care Facility
Teton Medical Center 915 4 <sup>th</sup> Street NW Choteau, MT	Lat: 47° 48.855 N	22 Min	1.5 hours plus	406-466-5763	<input checked="" type="checkbox"/> <input type="checkbox"/>	General Clinic, On-call MD after hours
	Long: 112° 11.565 W					
	VHF: TX and RX 155.2800					
St. Peter's Hospital 2475 Broadway Helena, MT	Lat: 46° 35.077 N	20 Min	1 Hour plus	406-442-2480	<input checked="" type="checkbox"/> <input type="checkbox"/>	Level 3 Trauma Center
	Long: 111° 59.800 W					
	VHF: TX and RX 155.2800					
Benefis Health Systems 1101 26 <sup>th</sup> Street South Great Falls, MT 59405	Lat: 47° 29.510 N	25 min	2 Hours plus	406-455-5200	<input checked="" type="checkbox"/> <input type="checkbox"/>	Level 2 Trauma Center
	Long: -111° 15.590 W					
	VHF: TX and RX 155.2800					
Harborview Medical Center 325 9th Ave. Seattle, WA	Lat: 47° 36.188' N	1.5 Hrs fixed wing	9 Hours	206-284-2876 888-731-4791	<input checked="" type="checkbox"/> <input type="checkbox"/>	Burn Center/Trauma Center
	Long: 112° 19.501' W					
	VHF: NA					



## MEDICAL PLAN (ICS 206 WF)

5. Hospitals								
University of Utah 50 N. Medical Drive Salt Lake City, UT	Lat:	40° 46.346' N	1.5 hrs. fixed wing	8 Hours	801-581-2700	<input checked="" type="checkbox"/>	<input type="checkbox"/>	Burn Center/Trauma Center
	Long:	111° 50.225' W						
	VHF:	NA						
6. Division   Branch   Group			Area Location Capability					
DIV A/X	EMS Responders & Capability:	Ambu Medic 9 until 1200, EMPF Egan						
	Equipment Available on Scene:	BLS, ALS with Ambulance						
	Medical Emergency Channel:	CMD to Comms						
	ETA for Ambulance to Scene:	Variable on Location						
	Approved Helispot:							
DIV D	EMS Responders & Capability:	Unstaffed						
	Equipment Available on Scene:							
	Medical Emergency Channel:	CMD to Comms						
	ETA for Ambulance to Scene:							
	Approved Helispot:							
DIV K	EMS Responders & Capability:	Ambu Medic 9 until 1200, EMPF Egan						
	Equipment Available on Scene:	BLS/Trauma						
	Medical Emergency Channel:	CMD to Comms						
	ETA for Ambulance to Scene:	Approx. 15 min to Miller Ranch						
	Approved Helispot:							
DIV P	EMS Responders & Capability:	Ambu Medic 9 until 1200, EMPF Egan						
	Equipment Available on Scene:	BLS, ALS with Ambulance						
	Medical Emergency Channel:	CMD to Comms						
	ETA for Ambulance to Scene:	Variable on Location						
	Approved Helispot:							
Alice Creek ICP	EMS Responders & Capability:	Ambu Medic 9 until 1200, EMPF Egan						
	Equipment Available on Scene:	Advanced Life Support						
	Medical Emergency Channel:	CMD to Comms						
	ETA for Ambulance to Scene:	10-20min.						
	Approved Helispot:							
7. Prepared By (Medical Unit Leader)			Date/Time		Reviewed By (Safety Officer)		Date/Time	
Timothy M Egan MEDL			9/16/17 @ 1600		Laney Cutshaw SOF1 		9/16/17 @ 1600	

# MEDICAL PLAN (ICS 206 WF)

Medical Incident Report					
<b>Use items one through nine to communicate situation to communications/dispatch.</b>					
<b>1. CONTACT COMMUNICATIONS/DISPATCH</b> <i>Ex: "Communications, Div. Alpha. Stand-by for Priority Medical Incident Report." (If life threatening request designated frequency be cleared for emergency traffic.)</i>					
<b>2. INCIDENT STATUS:</b> <i>Provide incident summary and command structure.</i>					
Nature of Injury/Illness			<i>Describe the injury (Ex: Broken leg with bleeding)</i>		
Incident Name			<i>Geographic Name + "Medical" (Ex: Trout Meadow Medical)</i>		
Incident Commander			<i>Name of IC</i>		
Patient Care			<i>Name of Care Provider (Ex: EMT Smith)</i>		
<b>3. INITIAL PATIENT ASSESSMENT:</b> <i>Complete this section for each patient. This is only a brief, initial assessment. Provide additional patient info after completing this 9 Line Report.</i>					
Number of Patients:	Male / Female.	Age:	Weight:		
Conscious? <input type="checkbox"/> YES <input type="checkbox"/> <b>NO = MEDEVAC!</b>					
Breathing? <input type="checkbox"/> YES <input type="checkbox"/> <b>NO = MEDEVAC!</b>					
Mechanism of Injury: <i>What caused the injury?</i>					
Lat/Long (Datum WGS84) <i>Ex: N 40° 42.45' x W 123° 03.24'</i>					
<b>4. SEVERITY OF EMERGENCY, TRANSPORT PRIORITY</b>					
SEVERITY			TRANSPORT PRIORITY		
<input type="checkbox"/> <b>URGENT-RED</b> Life threatening injury or illness. <i>Ex: Unconscious, difficulty breathing, bleeding severely, 2° – 3° burns more than 4 palm sizes, heat stroke, disoriented.</i>			Ambulance or MEDEVAC helicopter. Evacuation need is <b>IMMEDIATE.</b>		
<input type="checkbox"/> <b>PRIORITY-YELLOW</b> Serious Injury or illness. <i>Ex: Significant trauma, not able to walk, 2° – 3° burns not more than 1-2 palm sizes.</i>			Ambulance or consider air transport if at remote location. Evacuation may be <b>DELAYED.</b>		
<input type="checkbox"/> <b>ROUTINE-GREEN</b> Not a life threatening injury or illness. <i>Ex: Sprains, strains, minor heat-related illness.</i>			Non-Emergency. Evacuation considered <b>Route of Convenience.</b>		
<b>5. TRANSPORT PLAN:</b>					
<b>Air Transport:</b> (Agency Aircraft Preferred).					
<input type="checkbox"/> Helispot		<input type="checkbox"/> Short-haul/Hoist		<input type="checkbox"/> Life Flight	
				<input type="checkbox"/> Other	
<b>Ground Transport:</b>					
<input type="checkbox"/> Self-Extract		<input type="checkbox"/> Carry-Out		<input type="checkbox"/> Ambulance	
				<input type="checkbox"/> Other	
<b>6. ADDITIONAL RESOURCE/EQUIPMENT NEEDS:</b>					
<input type="checkbox"/> Paramedic/EMT(s)		<input type="checkbox"/> Crew(s)		<input type="checkbox"/> SKED/Backboard/C-Collar	
<input type="checkbox"/> Burn Sheet(s)		<input type="checkbox"/> Oxygen		<input type="checkbox"/> Trauma Bag	
<input type="checkbox"/> Medication(s)		<input type="checkbox"/> IV/Fluid(s)		<input type="checkbox"/> Cardiac Monitor/AED	
<input type="checkbox"/> Other (i.e. splints, rope rescue, wheeled litter)					
<b>7. COMMUNICATIONS:</b>					
Function	Channel Name/Number	Receive (Rx)	Tone/NAC *	Transmit (Tx)	Tone/NAC *
<i>Ex: Command</i>	<i>Forest Rpt, Ch. 2</i>	<i>168.3250</i>	<i>110.9</i>	<i>171.4325</i>	<i>110.9</i>
COMMAND					
AIR-TO-GRND					
TACTICAL					
*(NAC for digital radio system)					
<b>8. EVACUATION LOCATION:</b>					
Lat/Long (Datum WGS84) <i>EX: N 40 42.45' x W 123 03.24'</i>					
Patient's ETA to Evacuation Location:					
Helispot/Extraction Size and Hazards:					
<b>9. CONTINGENCY:</b>					
<b>Considerations:</b> <i>If primary options fail, what actions can be implemented in conjunction with primary evacuation method? Be thinking ahead...</i>			<b>REMEMBER:</b> Confirm ETA's of resources ordered Act according to your level of training Be Alert. Keep Calm. Think Clearly. Act Decisively.		

Time	Major Events

