

# **EAST FORK FIRE**

MT-RBA-000061

**INCIDENT ACTION PLAN**

**09/08 – 09/12/17**



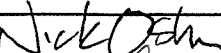

FS = PALAV717 (1502)

BLM = LAV7


**DON PYRAH**

**INCIDENT COMMANDER**

## INCIDENT OBJECTIVES (ICS 202)

<b>1. Incident Name:</b>		<b>2. Operational Period: DAY</b>	
EAST FORK		Date/Time From: 09/08/2017 0700      FRI	Date/Time To: 09/12/2017 2100      TUE
<b>3. Objective(s):</b>			
<p>Base all actions reflecting a commitment to firefighter and public safety.</p> <p>Ensure timely and accurate communication that fosters interactions with local cooperators, private land owners, and agency administrators.</p> <p>Utilize existing roads, trail systems, changes in vegetation, fuels and natural barriers to contain and minimize the suppression related impacts to the natural and cultural resources.</p> <p>Implement specific instructions in control operations that adhere to the Fire Suppression Repair plan.</p> <p>Utilize the <i>Interagency Business Management Handbook</i> to guide business management decisions.</p>			
<b>4. Operational Period Command Emphasis:</b>			
Refer to 204's block 6 and 7.			
<b>General Situational Awareness:</b>			
<b>5. Site Safety Plan Required?</b> Yes <input type="checkbox"/> No <input checked="" type="checkbox"/>			
<b>Approved Site Safety Plan(s) Located at:</b>			
<b>6. Incident Action Plan</b> (the items checked below are included in this Incident Action Plan):			
<input checked="" type="checkbox"/> ICS 202	<input type="checkbox"/> ICS 207	<b>Other Attachments:</b> <input type="checkbox"/> _____ <input type="checkbox"/> _____ <input type="checkbox"/> _____ <input type="checkbox"/> _____	
<input checked="" type="checkbox"/> ICS 203	<input type="checkbox"/> ICS 208		
<input checked="" type="checkbox"/> ICS 204	<input checked="" type="checkbox"/> ICS 220		
<input checked="" type="checkbox"/> ICS 205	<input checked="" type="checkbox"/> Map/Chart		
<input type="checkbox"/> ICS 205A	<input checked="" type="checkbox"/> Weather Forecast/Tides/Currents		
<input checked="" type="checkbox"/> ICS 206			
<b>7. Prepared by:</b> NICK OSTROM		<b>Position/Title:</b> ICT3 T	
<b>8. Approved by Incident Commander:</b>		<b>Signature:</b> 	
		<b>Signature:</b> 	
<b>ICS 202</b>		<b>IAP Page</b>	
		<b>Date/Time:</b> 09/07/2017 2100	

## ORGANIZATION ASSIGNMENT LIST (ICS 203)

<b>1. Incident Name:</b>		<b>2. Operational Period:</b> DAY	
EAST FORK		Date/Time From: 09/08/2017 0700 FRI	Date/Time To: 09/12/2017 2100 TUE
<b>3. Incident Commander(s) and Command Staff:</b>		SECURITY UNIT	
IC/UC	DON PYRAH	FOOD UNIT	
DEPUTY	NICK OSTROM	<b>7. Operations Section:</b>	
SAFETY OFFICER	DON FOCO	DAY OPS SECTION CHIEF	MIKE SOLHEIM
INFORMATION OFFICER		NIGHT OPS SECTION CHIEF	
LIAISON OFFICER		PLANNING OPS	
<b>4. Agency/Organization Representative(s):</b>		OPS SECTION CHIEF	
<b>Agency/Organization</b>	<b>Name</b>	DEPUTY OPS SECTION CHIEF	
ROCY BOY REP / BIA	MAMIE STUMP	STAGING AREA	
BIA	GARTH FISHER		
DNRC	CLIVE ROONEY		
HILL COUNTY	DIANE MCLEAN	DIVISION/GROUP	AZD DAVID WANDERAAS
BLAINE COUNTY	FRANK DEPRIEST	DIVISION/GROUP	B CAM FRIEDE
HILL COUNTY SHERIFF	JAMES ROSS	DIVISION/GROUP	C JOSH SEDEHOLM
BLAINE COUNTY SHERIFF	GLENN HUESTIS	DIVISION/GROUP	EQUIPMENT RYAN RILEY
FIRE WARDEN	KRAIG HANSEN	<b>7b. Air Operations Branch:</b>	
TRIBAL CULTURAL ADVISOR	WILLIAM LODGEPOLE	AIR OPS BRANCH DIRECTOR	
<b>5. Planning Section:</b>		AIR ATTACK SUPERVISOR	
CHIEF		AIR SUPPORT SUPERVISOR	
DEPUTY		HELICOPTER COORDINATOR	
RESOURCES UNIT		AIR TANKER COORDINATOR	
SITUATION UNIT		<b>8. Finance/Administration Section:</b>	
DOCUMENTATION UNIT		CHIEF	
DEMOBILIZATION UNIT		DEPUTY	
FIRE BEHAVIOR ANALYST		TIME UNIT	
HUMAN RESOURCE SPECIALIST		PROCUREMENT UNIT	
TRAINING SPECIALIST		COMPENSATION UNIT	
GIS SPECIALIST		COST UNIT	
TECHNOLOGY SUPPORT SPECIALIST			
INCIDENT METEOROLOGIST			
<b>6. Logistics Section:</b>			
CHIEF			
DEPUTY			
SUPPLY UNIT			
FACILITIES UNIT			
GROUND SUPPORT UNIT			
COMMUNICATIONS UNIT			
MEDICAL UNIT			
<b>9. Prepared By:</b>	<b>Name:</b> CHRIS JOHNSON	<b>Position/Title:</b> RESL	<b>Signature:</b>
ICS 203	IAP Page	<b>Date/Time:</b> 09/07/2017 2100	



# INCIDENT Weather Forecast

FORECAST NO: 6  
SHIFT DATE: Friday, September 8, 2017  
TIME/ DATE  
FORECAST ISSUED: 2000 Thursday, September 7, 2017

NAME OF FIRE: East Fork  
SIGNED:  
**Makoto Moore** - Incident Meteorologist

**DISCUSSION:**

**RED FLAG WARNING 1200 – 2000**

A ridge of high pressure over the region will begin breaking down today, continuing hot and dry conditions across the area while at the same time allowing strong and gusty winds out of the southeast to develop. Critical fire weather conditions will likely persist into Saturday.

**WEATHER FORECAST: FRIDAY**

**WEATHER:** Mostly sunny.  
**MAX TEMPERATURES / MIN HUMIDITY:** 86-91F / 8-13%  
**20 FT WINDS:** East-southeast 12-18 mph, gusts to 25 mph developing after 1200.

**HAINES INDEX:** 6 (High)                      **CWR:** 0%                      **LAL:** 1.

**WEATHER FORECAST: FRIDAY NIGHT**

**WEATHER:** Mostly clear.  
**MIN TEMPERATURES / MAX HUMIDITY:** 50-55 F / 40-45%  
**20 FT WINDS:** South-southeast 10-17 mph.

**CWR:** 0%                      **LAL:** 1.

**EXTENDED FORECAST: SATURDAY-TUESDAY**

**SATURDAY:** Mostly sunny. Increasing cloudiness in the afternoon. Max Temp/Min RH: 87-92 F/15-20%. Min Temp/Max RH: 55-60 F/45-50%. West-southwest winds 10-15 mph with gusts to 30 mph.

**SUNDAY:** Partly cloudy. Isolated afternoon dry thunderstorms. Max Temp/Min RH: 80-85 F/20-25%. Min Temp/Max RH: 46-51 F/60-65%. West-northwest winds 10-15 mph with gusts to 30 mph.

**MONDAY:** Mostly sunny. Max Temp/Min RH: 77-82 F/18-23%. Min Temp/Max RH: 44-49 F/55-60%. West-southwest winds 7-12 mph with gusts to 20 mph.

**TUESDAY:** Mostly sunny. Max Temp/Min RH: 75-80 F/20-25%. Min Temp/Max RH: 42-47 F/60-65%. West winds 7-12 mph.

**Sunrise: 646 am      Sunset: 745 pm**


**NWS Great Falls forecast office:**

<http://www.wrh.noaa.gov/firewx/?wfo=tx>

**Predictive Services Web Briefing:**

<https://gacc.nifc.gov/nrcc/predictive/weather/WebBriefing/WebBriefing.mp4>

## FIRE BEHAVIOR FORECAST

FORECAST NUMBER: 6	TYPE OF FIRE: Wildfire
FIRE NAME: East Fork Fire	OPERATIONAL PERIOD: September 7-11, 2017
DATE ISSUED: September 6, 2017	TIME ISSUED: 2000
UNIT: Hill County, Blaine County, Rocky Boy Agency, MT DNR	SIGNED:  Gary Brown FBAN

### INPUTS

**WEATHER SUMMARY: See Attached Fire Weather Forecast**

The warming and drying trend is continuing to build, however light winds will persist. Haines will be 6 (High) for today and will be flirting with 6 throughout the forecast period. Energy Release Component (ERC) for the Rocky Boy weather station is running over the 97<sup>th</sup> percentile and is actually going up in recent days. Critical fire weather will occur on Saturday. The extreme fire weather (high winds, extreme ERC and low night time recovery) that moved this fire in the first place will be occurring again this weekend.

**FUEL CONDITIONS:** Fuels in this area and across the state are extremely dry following the long hot and dry summer. Spring rains created a significantly high grass crop, however the summer months have been dry with above normal temperatures and below normal moisture, to the point that drought conditions have spread across the state. A Fuels and Fire Behavior Advisory has been issued for the fire area that highlights the concerns associated with the extremely dry conditions.

### OUTPUTS

**GENERAL FIRE BEHAVIOR:**

Fuels Model	Rate of Spread (chains/hour)		Flame Length (feet)		Spotting Distance
	Head	Backing	Head	Backing	
Grass	28 -120	3	8	1	.1 mile
Timber	10-15	1	4	1	.3 mile

**SPECIFIC FIRE BEHAVIOR**

**ALL DIVISIONS:** Any new starts will burn aggressively so keep a sharp eye out.

**Friday:** We will continue to see smoldering in the duff and logs under conifer stands and along the stream edges. The warming and drying trend continues and winds start to increase. We should expect to see continued minimal fire activity unless an unburned island or a new start get going.

**Saturday:** A significant weather event is forecast for today. Red Flag conditions are possible so look for confirmation in Fridays Great Falls forecast. The warming and drying trend continues so any new starts or reburns will burn actively.

**The conditions are forecast to be extreme on this day, pay close attention to the basics of fire fighting**

**Sunday:** The forecast is calling for a higher level of wind and moderating temperature, Since these are grass fuel type, a small amount of rain will be dried off by afternoon and active fire behavior is possible

**Monday and Tuesday:** Moderating temperature should dampen fire activity just a bit, but this is a long ways out to forecast as fire behavior is a very dynamic process. One thing is for sure, this county is dry, bone dry so it will take a serious rain event to kick us out of fire season, don't let cooler temps or a small rain event suck folks into thinking its over.

### AIR OPERATIONS

Friday's air ops conditions will be good, just hot temperatures. Saturday's potential critical weather could present a challenge in the form of thunderstorms and higher winds. The remainder of the forecast period has a higher level of wind and slightly cooler temperature.

### SAFETY

This weekend will be a time of great concern in regards to the fire weather forecast and the potential for another round of lightning and a resulting extreme fire event. Make sure everyone on the fire get the word of this event, including the local citizens. Practice everything you learned in training, use the IRPG as a reference and follow the hard learned that keep fire fighters safe in these kinds of conditions.

## Division/Group Assignment List (ICS 204 WF)

<b>1. Incident Name:</b>			<b>3.</b>			
EAST FORK			Branch:		Division/Group:  <b>A Z D</b>	
<b>2. Operational Period: DAY</b>						
Date/Time From: 09/08/2017 0700 FRI		Date/Time To: 09/12/2017 2100 TUE				
<b>4. Operations Personnel</b>						
OPERATIONS CHIEF		MIKE SOLHEIM		BRANCH DIRECTOR		
AIR OPS BRANCH DIRECTOR				DIVISION/GROUP SUPERVISOR		DAVID WANDERAAS
<b>5. Resources Assigned this Period</b>						
Strike Team / Task Force / Resource Designator		LWD	Leader	Number Persons	Drop Off PT./Time	Pick Up PT./Time
HC2 FORT BELKNAP 4 C-3		09/14	VINCENT BRADLEY	20	EAST LAKE ICP/0700	EAST LAKE ICP/2100
HC2 ROCKY BOY 2			TAD LAMERE	15	EAST LAKE ICP/0700	EAST LAKE ICP/2100
ENG4 EVART 57 E-7		09/16	DENNIS BEEBE	3	EAST LAKE ICP/0700	EAST LAKE ICP/2100
ENG6 WHITEGRASS E-13		09/14	CLIFFORD WHITEGRASS	3	EAST LAKE ICP/0700	EAST LAKE ICP/2100
ENG6 RIPHENBURG FIRE E-14		09/14	SHAUN RIPHENBURG	3	EAST LAKE ICP/0700	EAST LAKE ICP/2100
ENG6 WILLIAMS WILDLAND E-82 9/9 1200		09/23				
ENG6 SOLOMON 4 E-90			JUSTIN TENDROY	2	EAST LAKE ICP/0700	EAST LAKE ICP/2100
ENG6 ROCKY BOY 6 E-87			ADRIAN STANDING ROCK	2	EAST LAKE ICP/0700	EAST LAKE ICP/2100
ENG6 ROCKYBOY 7 E-86		09/11	JUAN GAMBLE	2	EAST LAKE ICP/0700	EAST LAKE ICP/2100
WTT1 NIMMICK E-7025		09/15	JASON NIMMICK	1	EAST LAKE ICP/0700	EAST LAKE ICP/2100
<b>8. Division/Group Communication Summary</b>						
Function	Channel	RX Frequency N/W	RX Tone/NAC	TX Frequency N/W	TX Tone/NAC	Mode
	SEE		COMMO		PLAN	
<b>9. Prepared By (Resource Unit Leader)</b>			<b>Approved By (Planning Section Chief)</b>		<b>Date</b>	<b>Time</b>
CHRIS JOHNSON RESL			NICK OSTROM ICT3 T		09/07/2017	2100

## Division/Group Assignment List (ICS 204 WF)

<b>1. Incident Name:</b>			<b>3.</b>			
EAST FORK			<b>Branch:</b>		<b>Division/Group:</b>	
<b>2. Operational Period: DAY</b>					<b>A Z D</b>	
Date/Time From: 09/08/2017 0700      FRI		Date/Time To: 09/12/2017 2100      TUE				
<b>4. Operations Personnel</b>						
<b>OPERATIONS CHIEF</b>		MIKE SOLHEIM		<b>BRANCH DIRECTOR</b>		
<b>AIR OPS BRANCH DIRECTOR</b>				<b>DIVISION/GROUP SUPERVISOR</b>		
				DAVID WANDERAAS		
<b>5. Resources Assigned this Period</b>						
<b>Strike Team / Task Force / Resource Designator</b>		<b>LWD</b>	<b>Leader</b>	<b>Number Persons</b>	<b>Drop Off PT./Time</b>	<b>Pick Up PT./Time</b>
<b>6. Control Operations/Work Assignments:</b>						
<p>Utilize appropriate tactics for full perimeter control.                      Mop up to the extent necessary to ensure line security.                      Repair suppression damage that is not required for perimeter security.                      Purpose: Maintain the fires current perimeter to ensure no further loss to values at risk.                      (Structures, grazing land, crops: both bailed and planted.)</p> <p>Backhaul equipment, pumps, hose, and any other items that need to be returned to supply.                      Remove all litter and trash and dispose of it properly.</p> <p>Maintain and continue to build positive working relationships with local cooperators, landowners, and agency personnel. (Rocky Boys Agency, BIA, Blaine Co, Hill Co, DNRC, etc.)</p>						
<b>7. Special Instructions:</b>						
<p>The area is open range: livestock and wildlife may be on roadways.                      Heads-up for potential archeology sites, or areas of cultural importance.                      East Fork Fire has no IA responsibility. (We will assist the local agencies as requested through OPS by local dispatch.)                      E-7025 to support pumpkins at Beaver Creek Staging and DP20.</p> <p>Complete suppression repair activities in accordance with the East Fork Fire Repair Plan to restore damage created by suppression activities to the extent practical as agreed upon between Agency administrators and the incident commander and as coordinated with resource advisors.</p>						
<b>8. Division/Group Communication Summary</b>						
<b>Function</b>	<b>Channel</b>	<b>RX Frequency N/W</b>	<b>RX Tone/NAC</b>	<b>TX Frequency N/W</b>	<b>TX Tone/NAC</b>	<b>Mode</b>
	SEE		COMMO		PLAN	
<b>9. Prepared By (Resource Unit Leader)</b>		<b>Approved By (Planning Section Chief)</b>		<b>Date</b>		<b>Time</b>
CHRIS JOHNSON RESL		NICK OSTROM ICT3 T		09/07/2017		2100





## Division/Group Assignment List (ICS 204 WF)

<b>1. Incident Name:</b>				<b>3.</b>			
EAST FORK				Branch:		Division/Group:	
<b>2. Operational Period: DAY</b>						<b>B</b>	
Date/Time From: 09/08/2017 0700 FRI		Date/Time To: 09/12/2017 2100 TUE					
<b>4. Operations Personnel</b>							
<b>OPERATIONS CHIEF</b>		MIKE SOLHEIM		<b>BRANCH DIRECTOR</b>			
<b>AIR OPS BRANCH DIRECTOR</b>				<b>DIVISION/GROUP SUPERVISOR</b>		CAM FRIEDE	
<b>5. Resources Assigned this Period</b>							
Strike Team / Task Force / Resource Designator		LWD	Leader	Number Persons	Drop Off PT./Time	Pick Up PT./Time	
HC21 MISSOURI 5 C-1		09/11	TIM PERREN	20	EAST LAKE ICP/0700	EAST LAKE ICP/2100	
ENG3 LOS PINOS 85 E-2		09/12	DANIEL DOSCH	3	EAST LAKE ICP/0700	EAST LAKE ICP/2100	
ENG3 CASTLE MOUNTAIN E-70		09/18	MACK NOSI	3	EAST LAKE ICP/0700	EAST LAKE ICP/2100	
ENG4 MI WEST BRANCH 57B E-93		09/18	KATIE ARMSTRONG	3	EAST LAKE ICP/0700	EAST LAKE ICP/2100	
ENG5 DNR- 2201 E-92		09/20	BRANDON SANDAU	3	EAST LAKE ICP/0700	EAST LAKE ICP/2100	
ENG6 BUTLER 41 E-6		09/13	BRANDON OTIS	2	EAST LAKE ICP/0700	EAST LAKE ICP/2100	
ENG6 SOLOMON 1 E-45		09/15	IVAN WING	3	EAST LAKE ICP/0700	EAST LAKE ICP/2100	
ENG6 AZ 303 E-75		09/20	RYAN ELLIS	3	EAST LAKE ICP/0700	EAST LAKE ICP/2100	
ENG6 ATTACK ONE E-84		09/21			EAST LAKE ICP/0700	EAST LAKE ICP/2100	
ENG6 WILDLAND FIRES E-81		09/21			EAST LAKE ICP/0700	EAST LAKE ICP/2100	
TFLD E-93.14		09/18	RAY COLE	1	EAST LAKE ICP/0700	EAST LAKE ICP/2100	
HEQB O-21		09/14	MARK ABRAHAMSON	1	EAST LAKE ICP/0700	EAST LAKE ICP/2100	
<b>8. Division/Group Communication Summary</b>							
Function	Channel	RX Frequency N/W	RX Tone/NAC	TX Frequency N/W	TX Tone/NAC	Mode	
	SEE		COMMO		PLAN		
<b>9. Prepared By (Resource Unit Leader)</b>			<b>Approved By (Planning Section Chief)</b>		<b>Date</b>	<b>Time</b>	
CHRIS JOHNSON RESL			NICK OSTROM ICT3 T		09/07/2017	2100	

## Division/Group Assignment List (ICS 204 WF)

<b>1. Incident Name:</b>			<b>3.</b>			
EAST FORK			Branch:		Division/Group:	
<b>2. Operational Period: DAY</b>					<b>B</b>	
Date/Time From: 09/08/2017 0700 FRI						
<b>4. Operations Personnel</b>						
OPERATIONS CHIEF		MIKE SOLHEIM		BRANCH DIRECTOR		
AIR OPS BRANCH DIRECTOR				DIVISION/GROUP SUPERVISOR		CAM FRIEDE
<b>5. Resources Assigned this Period</b>						
Strike Team / Task Force / Resource Designator	LWD	Leader	Number Persons	Drop Off PT./Time	Pick Up PT./Time	
<b>6. Control Operations/Work Assignments:</b>						
<p>Utilize appropriate tactics for full perimeter control.  Mop up to the extent necessary to ensure line security.  Repair suppression damage that is not required for perimeter security.  Purpose: Maintain the fires current perimeter to ensure no further loss to values at risk.  (Structures, grazing land, crops: both bailed and planted.)</p> <p>Backhaul equipment, pumps, hose, and any other items that need to be returned to supply.  Remove all litter and trash and dispose of it properly.</p> <p>Maintain and continue to build positive working relationships with local cooperators, landowners, and agency personnel. (Rocky Boys Agency, BIA, Blaine Co, Hill Co, DNRC, etc.)</p>						
<b>7. Special Instructions:</b>						
<p>The area is open range: livestock and wildlife may be on roadways.  Heads-up for potential archeology sites, or areas of cultural importance.  East Fork Fire has no IA responsibility. (We will assist the local agencies as requested through OPS by local dispatch.)</p> <p>Complete suppression repair activities in accordance with the East Fork Fire Repair Plan to restore damage created by suppression activities to the extent practical as agreed upon between Agency administrators and the incident commander and as coordinated with resource advisors.</p>						
<b>8. Division/Group Communication Summary</b>						
Function	Channel	RX Frequency N/W	RX Tone/NAC	TX Frequency N/W	TX Tone/NAC	Mode
	SEE		COMMO		PLAN	
<b>9. Prepared By (Resource Unit Leader)</b>			<b>Approved By (Planning Section Chief)</b>		<b>Date</b>	<b>Time</b>
CHRIS JOHNSON RESL			NICK OSTROM ICT3 T		09/07/2017	2100





### Division/Group Assignment List (ICS 204 WF)

<b>1. Incident Name:</b>			<b>3.</b>			
EAST FORK			Branch:		Division/Group:  <b>C</b>	
<b>2. Operational Period: DAY</b>						
Date/Time From: 09/08/2017 0700 FRI		Date/Time To: 09/12/2017 2100 TUE				
<b>4. Operations Personnel</b>						
OPERATIONS CHIEF		MIKE SOLHEIM		BRANCH DIRECTOR		
AIR OPS BRANCH DIRECTOR				DIVISION/GROUP SUPERVISOR		JOSH SEDERHOLM
<b>5. Resources Assigned this Period</b>						
Strike Team / Task Force / Resource Designator		LWD	Leader	Number Persons	Drop Off PT./Time	Pick Up PT./Time
<b>6. Control Operations/Work Assignments:</b>						
<p>Utilize appropriate tactics for full perimeter control.  Mop up to the extent necessary to ensure line security.  Repair suppression damage that is not required for perimeter security.  Purpose: Maintain the fires current perimeter to ensure no further loss to values at risk.  (Structures, grazing land, crops: both bailed and planted.)</p> <p>Backhaul equipment, pumps, hose, and any other items that need to be returned to supply.  Remove all litter and trash and dispose of it properly.</p> <p>Maintain and continue to build positive working relationships with local cooperators, landowners, and agency personnel. (Rocky Boys Agency, BIA, Blaine Co, Hill Co, DNRC, etc.)</p>						
<b>7. Special Instructions:</b>						
<p>Utilize appropriate tactics for full perimeter control.  Mop up to the extent necessary to ensure line security.  Repair suppression damage that is not required for perimeter security.  Purpose: Maintain the fires current perimeter to ensure no further loss to values at risk.  (Structures, grazing land, crops: both bailed and planted.)</p> <p>Complete suppression repair activities in accordance with the East Fork Fire Repair Plan to restore damage created by suppression activities to the extent practical as agreed upon between Agency administrators and the incident commander and as coordinated with resource advisors.</p>						
<b>8. Division/Group Communication Summary</b>						
Function	Channel	RX Frequency N/W	RX Tone/NAC	TX Frequency N/W	TX Tone/NAC	Mode
	SEE		COMMO		PLAN	
<b>9. Prepared By (Resource Unit Leader)</b>			<b>Approved By (Planning Section Chief)</b>		<b>Date</b>	<b>Time</b>
CHRIS JOHNSON RESL			NICK OSTROM ICT3 T		09/07/2017	2100





## Division/Group Assignment List (ICS 204 WF)

<b>1. Incident Name:</b>			<b>3.</b>			
EAST FORK			<b>Branch:</b>		<b>Division/Group:</b>	
<b>2. Operational Period: DAY</b>						
Date/Time From: 09/08/2017 0700 FRI		Date/Time To: 09/12/2017 2100 TUE		<b>EQUIPMENT</b>		
<b>4. Operations Personnel</b>						
<b>OPERATIONS CHIEF</b>		MIKE SOLHEIM		<b>BRANCH DIRECTOR</b>		
<b>AIR ATTACK SUPERVISOR</b>				<b>DIVISION/GROUP SUPERVISOR</b>		RYAN RILEY
<b>5. Resources Assigned this Period</b>						
Strike Team / Task Force / Resource Designator		LWD	Leader	Number Persons	Drop Off PT./Time	Pick Up PT./Time
<b>6. Control Operations/Work Assignments:</b>						
<p>Repair suppression damage that is not required for perimeter security.                  Purpose: Maintain the fires current perimeter to ensure no further loss to values at risk.                  (Structures, grazing land, crops: both bailed and planted.)</p> <p>Backhaul equipment, pumps, hose, and any other items that need to be returned to supply.                  Remove all litter and trash and dispose of it properly.</p> <p>Maintain and continue to build positive working relationships with local cooperators, landowners, and agency personnel. (Rocky Boys Agency, BIA, Blaine Co, Hill Co, DNRC, etc.)</p>						
<b>7. Special Instructions:</b>						
<p>Mop up to the extent necessary to ensure line security.                  Repair suppression damage that is not required for perimeter security.                  Purpose: Maintain the fires current perimeter to ensure no further loss to values at risk.                  (Structures, grazing land, crops: both bailed and planted.)</p> <p>Complete suppression repair activities in accordance with the East Fork Fire Repair Plan to restore damage created by suppression activities to the extent practical as agreed upon between Agency administrators and the incident commander and as coordinated with resource advisors.</p>						
<b>8. Division/Group Communication Summary</b>						
<b>Function</b>	<b>Channel</b>	<b>RX Frequency N/W</b>	<b>RX Tone/NAC</b>	<b>TX Frequency N/W</b>	<b>TX Tone/NAC</b>	<b>Mode</b>
	SEE		COMMO		PLAN	
<b>9. Prepared By (Resource Unit Leader)</b>			<b>Approved By (Planning Section Chief)</b>		<b>Date</b>	<b>Time</b>
CHRIS JOHNSON RESL			NICK OSTROM ICT3 T		09/07/2017	2100





# HEALTH AND SAFETY MESSAGE

***SAFETY*** starts with ***YOU*** **PREDICTABLE IS PREVENTABLE**  
For Operations: September 8- , 2017

**INCIDENT: East Fork**

**DATE: Sept 7, 2017 TIME: 1800**

## Major Hazards and Risks:

- **ACCOUNTABILITY:** Each resource on the fire has a supervisor. Know and coordinate with him/her.
- **DRIVING:** Drive defensively, Be aware of animals and other hazardous road conditions, Be alert and watch for the other guy
- **HEAVY EQUIPMENT OPERATION:** Maintain 50 – 100 ft exclusion area around equipment and 1 ½ times the high of timber. Avoid working below equipment.
- **Communications:** Maintain communications with your supervisor and adjoining resources. Use human repeaters as needed

## Fire Order of the Day:

*Give clear instructions and be sure they are understood.*

- Ensure all resources are involved in your briefing
- Ensure accountability for all within your span of control
  - Acknowledge messages and instructions
  - Ask questions and clarify instructions

### Risk Management Process

#### Situation Awareness

Gather Information

Objective(s)	Previous Fire Behavior
Communication	Weather Forecast
Who's in Charge	Local Factors

#### Hazard Assessment

Estimate Potential Hazards

- Look Up/Down/Around Indicators
- Identify Tactical Hazards

What other safety hazards exist?

Consider severity vs. probability?

#### Hazard Control

Identify hazard mitigation actions

What other controls are necessary?

#### Decision Point

Are controls in place for identified hazards?

**NO** - Reassess situation    **YES** - Next question

Are selected tactics based on expected actions/outcomes?

**NO** - Reassess situation    **YES** - Next question

Have instructions been given and understood?

**NO** - Reassess situation    **YES** - Initiate action

#### Evaluate

Human Factors: Low experience level?

Distracted from primary tasks?

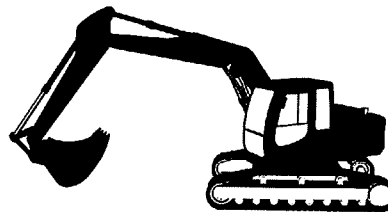
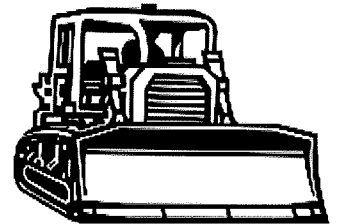
Fatigue or stress reaction?

Hazardous attitude?



## Heavy Equipment Operation

- Ensure communication is established with the operators
- Use hand signals if other communications are unavailable
- Maintain 50'-100' exclusion area around equipment and increase it to 1 ½ times the tree height when in timber
- Use a spotter when backing
- Avoid working below heavy equipment



**Thanks from your safety team: Don Foco**



## DRIVING SAFETY

*Vehicles/Roads Category*

**Driving is one of the most hazardous things we do because we literally perform the task hundreds of times in the course of our daily lives we tend to take it for granted. Based on recent accident trends, vehicle accidents are the source of more deaths and serious injuries to wildland firefighters than any other single cause.**

- ◆ To be a safe driver you have to *want* to be one. Take a good hard look at your driving habits. Are you training yourself to do the right things the right way, like fastening your seat belt, checking your mirrors, and maintaining safe following distances?
- ◆ Inattentiveness is a major contributing factor in motor vehicle accidents within the wildland firefighting community. Since the average adult attention span is 15-20 minutes we must develop techniques that allow us to refocus our attention on our driving.
- ◆ Many things can lure our attention away from our driving such as: fatigue, eating and drinking, reading directions and maps, writing, cell phone and radio use, conversation within the vehicle and music.
  - ✓ Drive only when you are well rested and alert and avoid driving during the hours of 10:00 PM and 6:00 AM. Take a 10 to 15 minute break after every 2 hours.
  - ✓ Practice situational awareness; be aware of what is happening in front, behind, and on both sides of your vehicle.
  - ✓ Never drive when taking medications that make you drowsy.
  - ✓ Delegate navigation and communication to a passenger or pull over.
  - ✓ By constantly moving your vision, checking mirrors and distant road conditions, you can avoid highway hypnosis and daydreaming.
  - ✓ Avoid eating or drinking while driving.
  - ✓ When talking with passengers, keep your eyes on the road and both hands on the steering wheel. Avoid serious or argumentative conversations.
  - ✓ Do not be in a hurry, be patient.
- ◆ Safe driving starts with a safe vehicle. Something as simple as under-inflated tires can have serious consequences. Before operating any vehicle, do a walk-around to look for potential problems, make sure the lights and blinkers work, and adjust your seat and mirrors. If it is the first time you have driven the vehicle, make yourself aware of where everything is.

Additional Resources: Video: Firefighter Remember This Series - [Firefighter: Remember This - Engine Rollover: Why This Accident Started Months Ago](#)

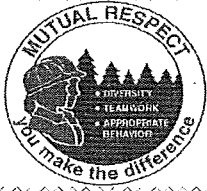
**Have an idea? Have feedback? Share it.**

EMAIL | [Facebook](#) | MAIL: 6 Minutes for Safety Subcommittee • 3833 S. Development Ave • Boise, ID 83705 | FAX: 208-387-5250

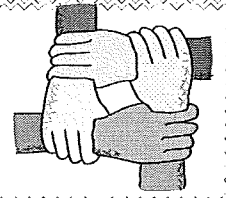
## INCIDENT SAFETY ANALYSIS 215a

East Fork - Friday, September 08, 2017

8. Location	9. Hazard	6. Control or Abatement Action (Engineering, Administrative, PPE, Avoidance, Education, etc)
All	Hazard Trees	<ul style="list-style-type: none"> <li>~ Follow "Hazard Tree Safety" guidelines, IRPG page 22.</li> <li>~ Post lookouts, or use a spotter in mop-up areas with personnel.</li> <li>~ Don't park vehicles or take breaks in high concentrations of hazard trees.</li> <li>~ Establish trigger points for disengagement during high wind events.</li> <li>~ Remember that the hazard zone extends a minimum of 2 1/2 tree heights.</li> </ul>
All	Communications	<ul style="list-style-type: none"> <li>~ Maintain communication with aviation resources, and suppression organization.</li> <li>~ Ensure all know frequency and protocol for contacting resources.</li> <li>~ Utilize the ICS 205.</li> <li>~ Utilize human repeaters when working in dead spots.</li> </ul>
All	Coordination with local fire departments	<ul style="list-style-type: none"> <li>~ Establish a unified command structure</li> <li>~ Keep unified commanders in a common location</li> <li>~ Establish common radio frequencies</li> <li>~ Establish common goals and tactics</li> <li>~ Encourage accountability of all resources</li> </ul>
All	Injury & Medical Emergency	<ul style="list-style-type: none"> <li>~ Assist injured employee appropriate medical care.</li> <li>~ Use EMT's on Division for initial care.</li> <li>~ Contact incident communications for incident within an incident (IWI)</li> <li>~ Follow the 9 line to communicate IWI information</li> <li>~ Follow medical protocol as outlined in ICS-206 &amp; IRPG Pgs 99-108</li> </ul>
All	Chain Saw Operations	<ul style="list-style-type: none"> <li>~ Follow "Hazard Tree Safety" guidelines, IRPG page 22</li> <li>~ Look up, Look down, Look around for hazard tree indicators.</li> <li>~ Only fell and buck trees within your expertise, and training.</li> <li>~ Follow "Procedural Felling Operations" on page 79 in IRPG.</li> <li>~ Do not fall trees during high wind events.</li> <li>~ Ensure proper use of all required PPE.</li> </ul>
All	Driving & Traffic	<ul style="list-style-type: none"> <li>~ Practice "Defensive Driving" techniques traveling on all roads and city streets.</li> <li>~ Use spotters when backing.</li> <li>~ Honk horn to alert personnel when backing.</li> <li>~ Keep clutter off dash and inside cab.</li> <li>~ Follow Driving LCES (Lights, Chock blocks, Emergency brake, Seat belts.</li> <li>~ Always use headlights.</li> <li>~ Yield to pedestrians and bicycles.</li> <li>~ Observe posted speed limits.</li> <li>~ Use the 3 second rule for following distance when driving.</li> <li>~ Use chock blocks, turn wheels into hill.</li> <li>~ Avoid distractions (eating, cell phones, radio).</li> <li>~ Ensure that windshields are kept clean of dust and bugs.</li> <li>~ Ensure vehicle is in good repair</li> </ul>
All	Heavy Equipment Operations	<ul style="list-style-type: none"> <li>~ Ensure communications are established with operators.</li> <li>~ Use hand signals if other communications are unavailable.</li> <li>~ Maintain a 50'-100' exclusion area around equipment and increase it to 1 1/2 times tree height when in timber.</li> <li>~ Use a spotter when backing.</li> <li>~ Avoid working below heavy equipment.</li> </ul>
All	Mop-up & Rehab	<ul style="list-style-type: none"> <li>~ Do not work above or below personnel during rehab/mop-up operations.</li> <li>~ Alert crew personnel of rolling debris by yelling to affected individuals.</li> <li>~ Position debris that could roll vertically on slope.</li> <li>~ Wear eye protection.</li> <li>~ Minimize exposure to snags</li> <li>~ Avoid complacency</li> </ul>
All	Wildlife & Livestock	<ul style="list-style-type: none"> <li>~ Montana is an open range state. Cattle very likely will be on the roads</li> <li>~ Watch out for wildlife &amp; livestock inside fire area and along roadways.</li> <li>~ Drive defensively, slow down for blind turns</li> <li>~ Clean up all debris and trash during each operational period.</li> </ul>



# Human Resource Message



## Incident Behavior

### Fireline Handbook, Chapter 6 – Common Responsibilities

#### Inappropriate Behavior:

It is extremely important that inappropriate behavior be recognized and dealt with promptly. Inappropriate behavior is all forms of harassment including sexual and racial harassment and shall not be tolerated. When you observe or hear of inappropriate behavior you should:

- Inform and educate subordinates of their rights and responsibilities
- Provide support to the victim.
- Develop appropriate corrective measures.
- Report the incident to your supervisor, if the behavior continues. Disciplinary action may be necessary.
- Document inappropriate behavior and report it to the employee's home agency.
- While working in and around private property, recognize and respect all private property.

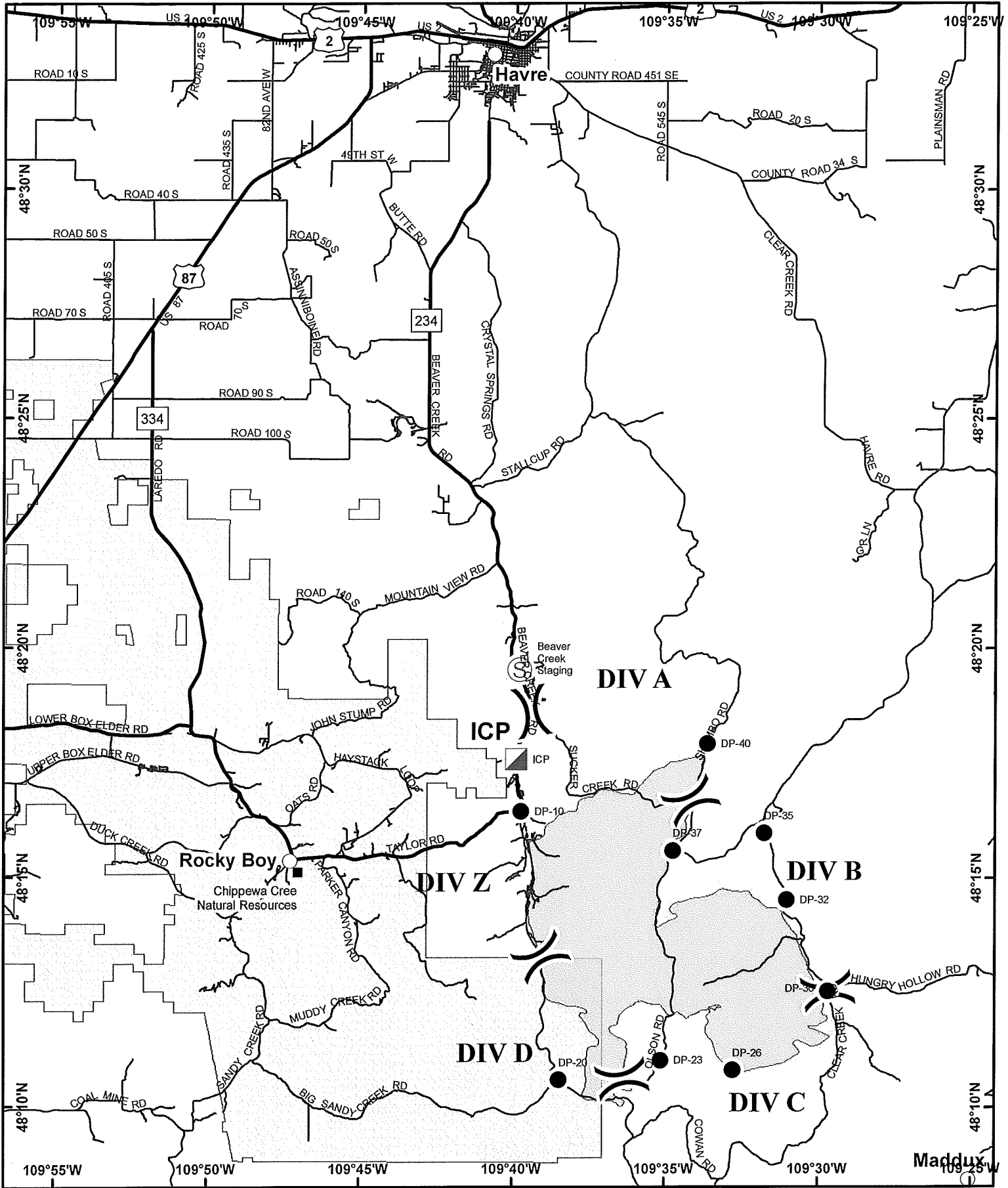
#### Drugs and Alcohol:

- Non-prescription unlawful drugs and alcohol are not permitted at the incident. Possession or use of these substances will result in disciplinary action.
- During off-incident Rest & Recuperation periods, personnel are responsible for proper conduct and maintenance of fitness for duty. Drug or alcohol abuse resulting in unfitness for duty will normally result in disciplinary action.
- Be a positive role model. Do not be involved with drug or alcohol abuse.
- Report any observed drug or alcohol abuse to your supervisor.

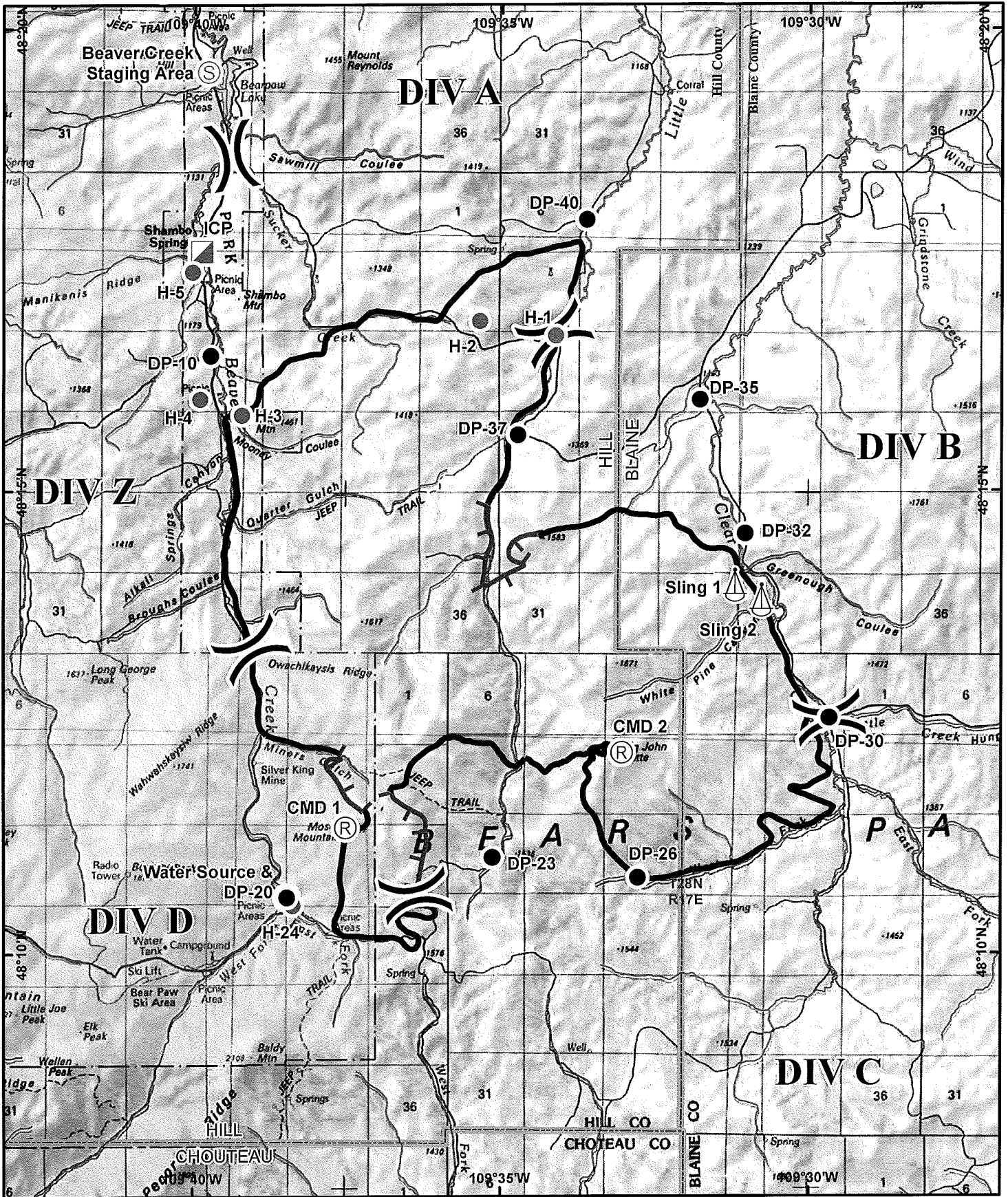
UNIT /SECTION	LANDLINE
Liason	406-395-8493
Agency Reps	
Check-In - Demob	406-395-8489
Training/Documentation	406-395-4056
Information	406-395-4275
IC	406-395-8413
Finance	406-395-8382
Procurement	406-395-8488
Time	406-395-8320
Operations/Resources	406-395-5103
Air Ops	406-395-5142
Safety	406-395-5164
Judith Building	406-395-4686
Pryor Building Logistics	406-395-8313
Facilities	406-395-4609
HRSP	406-395-5568
Communications	406-395-5957
Medical	406-395-5835

EAST FORK

ICT3	Don Pyrah	406-380-0064
Deputy ICT3(T)	Nick Ostrom	970-712-8498
OSC3	Mike Solheim	406-366-5517
SOF3	Don Focco	989-350-0554



<b>Transportation</b> East Fork 9/8/2017 0630 21,518 Acres	Incident Command Post	Division Break	Miles Map created Sept 2, 2017, 2200 hrs NAD83 UTM Zone 12N
	Drop Point	Uncontrolled Fire Edge	
	Staging Area	Rocky Boy Reservation	N



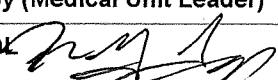

<p><b>IAP</b> East Fork 9/8/2017 0630 21,518 Acres</p>	● Drop Point	⌘ Division Break	▬ Uncontrolled Fire Edge
	● Helispot	⚓ Sling Site	▬ Completed Line
	▣ Incident Command Post	Ⓜ Repeater	▭ County boundary
	⊙ Staging Area		⬜ Rocky Boy Reservation
	Ⓜ Water Source		







# MEDICAL PLAN (ICS 206 WF)

<b>1. Incident/Project Name</b>		<b>2. Operational Period</b>			
<b>EAST FORK FIRE</b>		09/08/2017 -			
<b>3. Ambulance Services</b>					
<u>Name</u>	<u>Complete Address</u>	<u>Phone/Frequency</u>	<u>Advanced Life Support (ALS)</u>		
			Yes	No	
Havre Fire Department	520 4th Street, Havre	406-265-4361		X	
Rocky Boy Ambulance	Rocky Boy Tribal Health P.O. Box 664 Box Elder, Montana 59521	406-395-4513		X	
Great Falls Ambulance	514 9th Avenue South Great Falls, Montana 59405	406-453-5300	X		
<b>4. Air Ambulance Services</b>					
Mercy Air Ambulance	800-972-4000	Fixed Wing / Rotor			
Great Falls Dispatch for Resources	406-453-4300	MT National Guard - N/V and Hoist Capable.			
<b>5. Hospitals</b>					
Name Complete Address	Complete Address	Travel Time Air    Land	Phone/Freq.	Helipad Yes    No	Level of Care Facility
Northern Montana Health Care	30 13th St, Havre MT 59501	10 min / 20 min	406-265-4361	Yes	Level 3 ER
Intermountain Burn Center	University of Utah 50 N Medical Drive Salt Lake City 84132	1 Hour Fixed by Fixed Wing	801-581-2700	Yes	Burn Center
Benefis Hospital	1101 26th St. South Great Falls, MT	Air 40 Min Ground 1.5 Hr	406-455-5000	Yes	Level 2 Trauma Center
<b>6. Div. / Branch/ Group / Other</b>		<b>Area Location Capability</b>		<b>EMS</b>	
East Fork Fire ICP		None		Call the air / ground agency requested, or activate the 911 system.	
<b>7. Medical Special Instructions</b>					
ICP will not have any EMS services, contact the appropriate agency for an ambulance, or dial 911.					
<b>8. Prepared By (Medical Unit Leader)</b>		<b>9. Date/Time</b>	<b>10. Reviewed By (Safety Officer)</b>		<b>11. Date/Time</b>
Bruce Toy MED 		09/07/2017	Laney Cutshaw SOF1 		09/07/2017

# MEDICAL PLAN (9-line)



## Medical Incident Report



**FOR ALL MEDICAL EMERGENCIES: IDENTIFY ON SCENE INCIDENT COMMANDER BY NAME AND POSITION AND ANNOUNCE "MEDICAL EMERGENCY" TO INITIATE RESPONSE FROM IMT COMMUNICATIONS/DISPATCH.**

**Use items one through nine to communicate situation to communications/dispatch.**

**1. CONTACT COMMUNICATIONS/DISPATCH**

*Ex: "Communications, Div. Alpha. Stand-by for Priority Medical Incident Report." (If life threatening request designated frequency be cleared for emergency traffic.)*

**2. INCIDENT STATUS:** *Provide incident summary and command structure.*

Nature of Injury/Illness		<i>Describe the injury (Ex: Broken leg with bleeding)</i>
Incident Name		<i>Geographic Name + "Medical" (Ex: Trout Meadow Medical)</i>
Incident Commander		<i>Name of IC</i>
Patient Care		<i>Name of Care Provider (Ex: EMT Smith)</i>

**3. INITIAL PATIENT ASSESSMENT:** *Complete this section for each patient. This is only a brief, initial assessment. Provide additional patient info after completing this 9 Line Report.*

Number of Patients:.	Male / Female.	Age:.	Weight:.
Conscious? <input type="checkbox"/> YES <input type="checkbox"/> <b>NO = MEDEVAC!</b>			
Breathing? <input type="checkbox"/> YES <input type="checkbox"/> <b>NO = MEDEVAC!</b>			
Mechanism of Injury: <i>What caused the injury?</i>			
Lat/Long (Datum WGS84) <i>Ex: N 40° 42.45' x W 123° 03.24'</i>			

**4. SEVERITY OF EMERGENCY, TRANSPORT PRIORITY**

SEVERITY	TRANSPORT PRIORITY
<input type="checkbox"/> <b>URGENT-RED Life threatening injury or illness.</b> <i>Ex: Unconscious, difficulty breathing, bleeding severely, 2° – 3° burns more than 4 palm sizes, heat stroke, disoriented.</i>	Ambulance or MEDEVAC helicopter. Evacuation need is <b>IMMEDIATE.</b>
<input type="checkbox"/> <b>PRIORITY-YELLOW Serious Injury or illness.</b> <i>Ex: Significant trauma, not able to walk, 2° – 3° burns not more than 1-2 palm sizes.</i>	Ambulance or consider air transport if at remote location. Evacuation may be <b>DELAYED.</b>
<input type="checkbox"/> <b>ROUTINE-GREEN</b> Not a life threatening injury or illness. <i>Ex: Sprains, strains, minor heat-related illness.</i>	Non-Emergency. Evacuation considered <b>Route of Convenience.</b>

**5. TRANSPORT PLAN:**

**Air Transport:** (Agency Aircraft Preferred) .

<input type="checkbox"/> Helispot	<input type="checkbox"/> Short-haul/Hoist	<input type="checkbox"/> Life Flight	<input type="checkbox"/> Other
<b>Ground Transport: .</b>			
<input type="checkbox"/> Self-Extract	<input type="checkbox"/> Carry-Out	<input type="checkbox"/> Ambulance	<input type="checkbox"/> Other

**6. ADDITIONAL RESOURCE/EQUIPMENT NEEDS:**

<input type="checkbox"/> Paramedic/EMT(s)	<input type="checkbox"/> Crew(s)	<input type="checkbox"/> SKED/Backboard/C-Collar
<input type="checkbox"/> Burn Sheet(s)	<input type="checkbox"/> Oxygen	<input type="checkbox"/> Trauma Bag
<input type="checkbox"/> Medication(s)	<input type="checkbox"/> IV/Fluid(s)	<input type="checkbox"/> Cardiac Monitor/AED
<input type="checkbox"/> Other (i.e. splints, rope rescue, wheeled litter)		

**7. COMMUNICATIONS:**

Function	Channel Name/Number	Receive (Rx)	Tone/NAC *	Transmit (Tx)	Tone/NAC *
<i>Ex: Command</i>	<i>Forest Rpt, Ch. 2</i>	<i>168.3250</i>	<i>110.9</i>	<i>171.4325</i>	<i>110.9</i>
COMMAND					
AIR-TO-GRND					
TACTICAL					

\*(NAC for digital radio system)

**8. EVACUATION LOCATION:**

Lat/Long (Datum WGS84) <i>EX: N 40 42.45' x W 123 03.24'</i>	
Patient's ETA to Evacuation Location:	
Helispot/Extraction Size and Hazards:	

**9. CONTINGENCY:**



**Considerations:** *If primary options fail, what actions can be implemented in conjunction with primary evacuation method? Be thinking ahead...*

**REMEMBER:**

Confirm ETA's of resources ordered  
Act according to your level of training  
Be Alert. Keep Calm. Think Clearly. Act Decisively.

