

East Fork Fire

Incident Action Plan

Wednesday September 6, 2017

MT-RBA-000061

FS PALAV717 (1502)

BLM LAV7

Day Operational Period 0700 to 2100

Night Operational Period 1500 to 0600

Planning Schedule



0700-Day Operational Briefing

East Fork Fire ICP

1200-Command and General Staff

East Fork Fire ICP

1700-Tactics and Pre-Plan Meeting

East Fork Fire ICP

1900-Planning Meeting

East Fork Fire ICP

Stop, Think, Talk, before Acting!

Great Basin Team 2


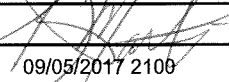
Kim Martin, Incident Commander



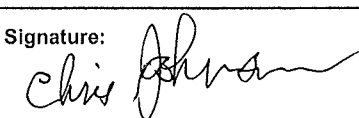
WGS 84

DD MM.MMM

INCIDENT OBJECTIVES (ICS 202)

1. Incident Name:		2. Operational Period: DAY	
EAST FORK		Date/Time From: 09/06/2017 0700 WED	Date/Time To: 09/06/2017 2100 WED
3. Objective(s): <p>Base all actions reflecting a commitment to firefighter and public safety.</p> <p>Ensure timely and accurate communication that fosters interactions with local cooperators, private land owners, and agency administrators.</p> <p>Utilize existing roads, trail systems, changes in vegetation, fuels and natural barriers to contain and minimize the suppression related impacts to the natural and cultural resources.</p> <p>Implement specific instructions in control operations that adhere to the Fire Suppression Repair plan.</p> <p>Utilize the <i>Interagency Business Management Handbook</i> to guide business management decisions.</p>			
4. Operational Period Command Emphasis: <p>Attached</p>			
General Situational Awareness: 			
5. Site Safety Plan Required? Yes <input type="checkbox"/> No <input checked="" type="checkbox"/>			
Approved Site Safety Plan(s) Located at:			
6. Incident Action Plan (the items checked below are included in this Incident Action Plan):			
<input checked="" type="checkbox"/> ICS 202	<input type="checkbox"/> ICS 207	Other Attachments: <input type="checkbox"/> _____ <input type="checkbox"/> _____ <input type="checkbox"/> _____ <input type="checkbox"/> _____	
<input checked="" type="checkbox"/> ICS 203	<input type="checkbox"/> ICS 208		
<input checked="" type="checkbox"/> ICS 204	<input checked="" type="checkbox"/> ICS 220		
<input checked="" type="checkbox"/> ICS 205	<input checked="" type="checkbox"/> Map/Chart		
<input type="checkbox"/> ICS 205A	<input checked="" type="checkbox"/> Weather Forecast/Tides/Currents		
<input checked="" type="checkbox"/> ICS 206			
7. Prepared by: STEVE JACKSON		Position/Title: PSC1	
8. Approved by Incident Commander:		Signature: 	
Name: KIM MARTIN		Signature: 	
ICS 202		Date/Time: 09/05/2017 2100	
IAP Page			

ORGANIZATION ASSIGNMENT LIST (ICS 203)

1. Incident Name: EAST FORK		2. Operational Period: DAY Date/Time From: 09/06/2017 0700 WED Date/Time To: 09/06/2017 2100 WED	
3. Incident Commander(s) and Command Staff:		FACILITIES UNIT EARL SLACK JAMES HOLLAND	
IC/UC	KIM MARTIN	GROUND SUPPORT UNIT DAVE FRITZSCHE	
DEPUTY	PAUL BROYLES	COMMUNICATIONS UNIT KEVIN WISEMORE	
SAFETY OFFICER	LANEY CUTSHAW FRED JOHNSON	FOOD UNIT LINDA HOLDER	
MEDICAL UNIT LEADER	BRUCE TOY JOE VANWALRAVEN	7. Operations Section:	
INFORMATION OFFICER	DAVID EAKER / BRIAN HARRIS MARTIN BALUKAS	DAY OPS SECTION CHIEF MIKE JOHNSTON	
LIAISON OFFICER	VICKIE LYTLE CLIVE ROONEY	PLANNING OPS ROD COLLINS SEAN JOHNSON (T)	
HUMAN RESOURCES	KAREN MORA	STRATEGIC OPS SECTION CHIEF CHAD OLSON	
4. Agency/Organization Representative(s):		Branch BLAINE COUNTY	
Agency/Organization	Name	BRANCH DIRECTOR PAUL HUTTA	
ROCKY BOY REP / BIA	MAMIE STUMP	Branch ROCKY BOY AGENCY HILL COUNTY	
BIA	GARTH FISHER	BRANCH DIRECTOR CODY PEEL	
DNRC	CLIVE ROONEY		
HILL COUNTY	DIANE MCLEAN	BRANCH DIRECTOR	
BLAINE COUNTY	FRANK DEPRIEST	DIVISION/GROUP A Z D PILA MALOLO BRYAN CHRISTENSEN (T)	
HILL COUNTY SHERIFF	JAMIE ROSS	DIVISION/GROUP B BRIAN NATE NICK OLSTROM (T)	
BLAINE COUNTY SHERIFF	GLENN HUESTIS	DIVISION/GROUP C SPENCER JOHNSTON MIKE SOLHIEM (T)	
FIRE WARDEN	KRAIG HANSEN		
TRIBAL CULTURAL ADVISOR	WILLIAM LODGEPOLE		
5. Planning Section:		7b. Air Operations Branch:	
CHIEF	STEVE JACKSON	AIR OPS BRANCH DIRECTOR ERIC TAPLIN	
RESOURCES UNIT	CHRIS JOHNSON	AIR ATTACK SUPERVISOR CHRIS VERO	
SITUATION UNIT	JOSH RELPH	AIR SUPPORT SUPERVISOR BLAKE FORD	
DOCUMENTATION UNIT			
DEMOBILIZATION UNIT	LORIE PRICE	8. Finance/Administration Section:	
FIRE BEHAVIOR ANALYST	GARY BROWN	CHIEF CAROL BASS	
TRAINING SPECIALIST	DON WASHCO	TIME UNIT SHARON HOLMES	
GIS SPECIALIST	CHRISTINA ANABEL ANDREW KESKE	PROCUREMENT UNIT DAN MYERS	
TECHNOLOGY SUPPORT SPECIALIST	ALEX PARK / ROGER CHRISTOPHER CARLOS ELIZONDO (T)	COMPENSATION UNIT RODGER WATERS	
INCIDENT METEOROLOGIST	MAKOTO MOORE	COST UNIT GEORGIA COWAN (T)	
STATUS CHECKIN	LORIE PRICE		
6. Logistics Section:			
CHIEF	MEGAN TIMONEY		
SUPPLY UNIT	HENRY HASSELHAN BOB HARPER		
9. Prepared By: Name: CHRIS JOHNSON	Position/Title: RESL	Signature: 	
ICS 203	IAP Page	Date/Time: 09/05/2017 2100	



INCIDENT Weather Forecast



FORECAST NO: 4
SHIFT DATE: Wednesday, September 6, 2017
TIME/ DATE
FORECAST ISSUED: 2000 Tuesday, September 5, 2017

NAME OF FIRE: East Fork
SIGNED:
Makoto Moore - Incident Meteorologist

DISCUSSION:

Another warm and dry day on tap for the fire area. A higher Haines Index today indicates that the atmosphere is becoming more unstable with increased heating, so afternoon winds will become gusty at times.

WEATHER FORECAST: WEDNESDAY

WEATHER: Mostly sunny.
MAX TEMPERATURES: 78-83F (24-hr trend: 5F up)
MIN HUMIDITY: 13-18% (24-hr trend: 1% down)
20 FT WINDS: East-southeast 5-8 mph becoming 8-12 mph with gusts to 20 mph after 1300 for higher exposed areas as well as east-west oriented drainages. Upslope/upvalley 6-9 mph after 1100 for sheltered slopes.

HAINES INDEX: 5 (Moderate) **CWR:** 0% **LAL:** 1.

WEATHER FORECAST: WEDNESDAY NIGHT

WEATHER: Mostly clear. Areas of smoke.
MIN TEMPERATURES: 43-48 F (24-hr trend: 3F down)
HUMIDITY: 50-55% (24-hr trend: no change)
20 FT WINDS: East-southeast 5-10 mph.

CWR: 0% **LAL:** 1.

EXTENDED FORECAST: THURSDAY-SATURDAY

THURSDAY: Sunny. Max Temp/Min RH: 82-87 F/10-15%. Min Temp/Max RH: 48-53 F/45-50%. East-southeast winds 8-12 mph, gusts to 20 mph after 1300.

FRIDAY: Mostly sunny. Increasing cloudiness late in the evening. Max Temp/Min RH: 84-89 F/11-16%. Min Temp/Max RH: 50-55 F/65-70%. Southeast winds 8-12 mph.

SATURDAY: Mostly cloudy in the morning, becoming partly cloudy in the afternoon. Max Temp/Min RH: 81-86 F/18-23%. Min Temp/Max RH: 47-52 F/65-70%. West-southwest winds 8-12 mph with gusts to 20 mph after 1400.

Sunrise: 643 am Sunset: 749 pm

FIRE BEHAVIOR FORECAST

FORECAST NUMBER: 4	TYPE OF FIRE: Wildfire
FIRE NAME: East Fork Fire	OPERATIONAL PERIOD: September 6, 2017 Day and Night shift
DATE ISSUED: September 5, 2017	TIME ISSUED: 2000
UNIT: Hill County, Blaine County, Rocky Boy Agency, MT DNR	SIGNED: <div style="text-align: right;">Gary Brown FBAN</div>

INPUTS

WEATHER SUMMARY: See Attached Fire Weather Forecast

The warming and drying trend is continuing to build, however light winds will persist. Haines will be 5 (moderate) for today. Energy Release Component (ERC) for the Rocky Boy weather station is running over the 97th percentile.

FUEL CONDITIONS: Fuels in this area and across the state are extremely dry following the long hot and dry summer. Spring rains created a significantly high grass crop, however the summer months have been dry with above normal temperatures and below normal moisture, to the point that drought conditions have spread across the state. A Fuels and Fire Behavior Advisory has been issue for the fire area that highlights the concerns associated with the extremely dry conditions.

OUTPUTS

GENERAL FIRE BEHAVIOR:

Fuels Model	Rate of Spread (chains/hour)		Flame Length (feet)		Spotting Distance
	Head	Backing	Head	Backing	
Grass	16	<1	4	1	.1 mile
Timber	10	<1	4	1	.1 mile

SPECIFIC FIRE BEHAVIOR

ALL DIVISIONS: We will continue to see smoldering in the duff and logs under conifer stands and along the stream edges. Temperatures will be up and few degrees and relative humidities down a few percent. Fire activity will continue to be limited due to the aggressive suppression efforts. However, as always with these conditions, a new start or a rekindle within the perimeter in an unburned island would burn actively during the heat of the day.

AIR OPERATIONS

Good conditions for air operations, light winds and warm temperatures. Smoke is anticipated to drift into the fire area from the west which may impact visibility.

SAFETY

With the ramp up of fireline repair activities the concern for a new start caused by machinery starts to increase. Monitor behind moving equipment and patrol repaired lines to ensure our good effort isn't undone.

FIRE BEHAVIOR REFRESHER MESSAGE #2

The Energy Release Component (ERC) is an index of how readily fuels will burn, considering weather, fuel load, and long-term drying of fuels. The ERC is a Fire Danger indicator, used to track seasonal trends in fire conditions, and to establish appropriate firefighter staffing levels. ERC is calculated based primarily on fuel moisture content, both live and dead, with greatest influence from heavy fuels. ERC is a common indices used on firefighter Pocket Cards. What does the number mean?

Daily fire weather forecasts include the current ERC value. Comparing today's ERC to historical conditions alerts you to today's fire danger potential. When ERC is high, expect very active fire behavior, and the possibility of large fire growth.

Division/Group Assignment List (ICS 204 WF)

1. Incident Name:		3.					
EAST FORK		BLAINE CO		Division/Group:			
2. Operational Period: DAY							
Date/Time From: 09/06/2017 0700	WED	Date/Time To: 09/06/2017 2100	WED				
4. Operations Personnel							
OPERATIONS CHIEF		MIKE JOHNSTON		BRANCH DIRECTOR		PAUL HUTTA	
AIR OPS BRANCH DIRECTOR		ERIC TAPLIN		DIVISION/GROUP SUPERVISOR			
5. Resources Assigned this Period							
Strike Team / Task Force / Resource Designator	LWD	Leader	Number Persons	Drop Off PT./Time	Pick Up PT./Time		
6. Control Operations/Work Assignments:							
7. Special Instructions:							
<p>The area is open range: livestock and wildlife may be on roadways. Heads-up for potential archeology sites, or areas of cultural importance. East Fork Fire has no IA responsibility. (We will assist the local agencies as requested through OPS by local dispatch.)</p>							
8. Division/Group Communication Summary							
Function	Channel	RX Frequency N/W	RX Tone/NAC	TX Frequency N/W	TX Tone/NAC	Mode	
	SEE		COMMO		PLAN		
9. Prepared By (Resource Unit Leader)			Approved By (Planning Section Chief)		Date	Time	
CHRIS JOHNSON			STEVE JACKSON		09/05/2017	1215	

Division/Group Assignment List (ICS 204 WF)

1. Incident Name:				3.			
EAST FORK				Branch:		Division/Group:	
2. Operational Period: DAY						A Z D	
Date/Time From: 09/06/2017 0700 WED		Date/Time To: 09/06/2017 2100 WED					
4. Operations Personnel							
OPERATIONS CHIEF		MIKE JOHNSTON		BRANCH DIRECTOR			
AIR OPS BRANCH DIRECTOR		ERIC TAPLIN		DIVISION/GROUP SUPERVISOR		PILA MALOLO BRYAN CHRISTENSEN (T)	
5. Resources Assigned this Period							
Strike Team / Task Force / Resource Designator		LWD	Leader	Number Persons	Drop Off PT./Time	Pick Up PT./Time	
HC2 FORT BELKNAP 4 C-3		09/14	VINCENT BRADLEY	20	EAST LAKE ICP/0700	EAST LAKE ICP/2100	
HC2 ROCKY BOY 2			TAD LAMERE	15	EAST LAKE ICP/0700	EAST LAKE ICP/2100	
ENG4 EVART 57 E-7		09/16	DENNIS BEEBE	3	EAST LAKE ICP/0700	EAST LAKE ICP/2100	
ENG6 BAKKEN 7 E-12		09/06	ROBERT BAKKEN	3	EAST LAKE ICP/0700	EAST LAKE ICP/2100	
ENG6 WHITEGRASS E-13		09/14	CLIFFORD WHITEGRASS	3	EAST LAKE ICP/0700	EAST LAKE ICP/2100	
ENG6 RIPHENBURG FIRE E-14		09/14	SHAUN RIPHENBURG	3	EAST LAKE ICP/0700	EAST LAKE ICP/2100	
ENG6 SOLOMON 4			JUSTIN TENDROY	2	EAST LAKE ICP/0700	EAST LAKE ICP/2100	
ENG6 BLACK EAGLE E-85				3	EAST LAKE ICP/0700	EAST LAKE ICP/2100	
ENG6 ROCKY BOY 6 E-87			ADRIAN STANDING ROCK	2	EAST LAKE ICP/0700	EAST LAKE ICP/2100	
ENG6 KREMLIN2 E-7019			RYAN MCKORMICK	2	EAST LAKE ICP/0700	EAST LAKE ICP/2100	
WTT1 NIMMICK E-7025		09/15	JASON NIMMICK	1	EAST LAKE ICP/0700	EAST LAKE ICP/2100	
WTS KREMLIN 1			C PETERSON	1	EAST LAKE ICP/0700	EAST LAKE ICP/2100	
TFLD			CAM FRIEDE	1	EAST LAKE ICP/0700	EAST LAKE ICP/2100	
HEQB O-22		09/17	MICHAEL FRANK	1	EAST LAKE ICP/0700	EAST LAKE ICP/2100	
DO22 CC2 D6			ENOS JOHNSON	1	EAST LAKE ICP/0700	EAST LAKE ICP/2100	
DO22 CC6 D6			CLEVE BRONCO	1	EAST LAKE ICP/0700	EAST LAKE ICP/2100	
DO22 CC10 D8			LARRY FAVEL	1	EAST LAKE ICP/0700	EAST LAKE ICP/2100	
GRAD CC2			ENOS JOHNSON		EAST LAKE ICP/0700	EAST LAKE ICP/2100	
SOF2 O-12		09/14	DON FOCO	1	EAST LAKE ICP/0700	EAST LAKE ICP/2100	
8. Division/Group Communication Summary							
Function	Channel	RX Frequency N/W	RX Tone/NAC	TX Frequency N/W	TX Tone/NAC	Mode	
	SEE		COMMO		PLAN		
9. Prepared By (Resource Unit Leader)			Approved By (Planning Section Chief)		Date	Time	
CHRIS JOHNSON			STEVE JACKSON		09/05/2017	1630	

Division/Group Assignment List (ICS 204 WF)

1. Incident Name:		3.				
EAST FORK		Branch:		Division/Group:		
2. Operational Period: DAY				A Z D		
Date/Time From: 09/06/2017 0700 WED	Date/Time To: 09/06/2017 2100 WED					
4. Operations Personnel						
OPERATIONS CHIEF		MIKE JOHNSTON		BRANCH DIRECTOR		
AIR OPS BRANCH DIRECTOR		ERIC TAPLIN		DIVISION/GROUP SUPERVISOR		
				PILA MALOLO BRYAN CHRISTENSEN (T)		
5. Resources Assigned this Period						
Strike Team / Task Force / Resource Designator	LWD	Leader	Number Persons	Drop Off PT./Time	Pick Up PT./Time	
6. Control Operations/Work Assignments:						
<p>Utilize appropriate tactics for full perimeter control. Mop up to the extent necessary to ensure line security. Repair suppression damage that is not required for perimeter security. Purpose: Maintain the fires current perimeter to ensure no further loss to values at risk. (Structures, grazing land, crops: both bailed and planted.)</p>						
7. Special Instructions:						
<p>The area is open range: livestock and wildlife may be on roadways. Heads-up for potential archeology sites, or areas of cultural importance. East Fork Fire has no IA responsibility. (We will assist the local agencies as requested through OPS by local dispatch.) E-7025 to support pumpkins at Beaver Creek Staging and DP20.</p>						
8. Division/Group Communication Summary						
Function	Channel	RX Frequency N/W	RX Tone/NAC	TX Frequency N/W	TX Tone/NAC	Mode
	SEE		COMMO		PLAN	
9. Prepared By (Resource Unit Leader)		Approved By (Planning Section Chief)		Date	Time	
CHRIS JOHNSON		STEVE JACKSON		09/05/2017	1630	

Division/Group Assignment List (ICS 204 WF)

1. Incident Name:			3.			
EAST FORK			Branch:		Division/Group:	
2. Operational Period: DAY					B	
Date/Time From: 09/06/2017 0700 WED		Date/Time To: 09/06/2017 2100 WED				
4. Operations Personnel						
OPERATIONS CHIEF		MIKE JOHNSTON		BRANCH DIRECTOR		
AIR OPS BRANCH DIRECTOR		ERIC TAPLIN		DIVISION/GROUP SUPERVISOR		BRIAN NATE NICK OLSTROM (T)
5. Resources Assigned this Period						
Strike Team / Task Force / Resource Designator		LWD	Leader	Number Persons	Drop Off PT./Time	Pick Up PT./Time
IHC1 CARSON C-9		09/06	MEMMER	19	EAST LAKE ICP/0700	EAST LAKE ICP/2100
HC2I MISSOURI 5 C-1		09/11	TIM PERREN	20	EAST LAKE ICP/0700	EAST LAKE ICP/2100
HC2I SAN ISABEL REGULARS C-15		09/07	CHRIS ROKOSH	21	EAST LAKE ICP/0700	EAST LAKE ICP/2100
ENG3 CASTLE MOUNTAIN E-70		09/18	MACK NOSI	3	EAST LAKE ICP/0700	EAST LAKE ICP/2100
ENG6 BUTLER 41 E-6		09/13	OTIS	2	EAST LAKE ICP/0700	EAST LAKE ICP/2100
ENG6 J3 E-1		09/13	REID BARNEY	3	EAST LAKE ICP/0700	EAST LAKE ICP/2100
ENG6 LOS PINOS 85 E-2		09/12	DANIEL DOSCH	3	EAST LAKE ICP/0700	EAST LAKE ICP/2100
ENG6 GIFFORD				2	EAST LAKE ICP/0700	EAST LAKE ICP/2100
ENG6 BEAR PAW 8				2	EAST LAKE ICP/0700	EAST LAKE ICP/2100
HEQB O-21		09/14	MARK ABRAHAMSON	1	EAST LAKE ICP/0700	EAST LAKE ICP/2100
DOZ2 DOUBLE R D8		09/07	WALL IN	1	EAST LAKE ICP/0700	EAST LAKE ICP/2100
DOZ2 OLEARY D6 E-7010			BALTROUSCH	1	EAST LAKE ICP/0700	EAST LAKE ICP/2100
SOF2 O-19.58		09/16	MARK WISEMAN	1	EAST LAKE ICP/0700	EAST LAKE ICP/2100
6. Control Operations/Work Assignments:						
<p>Utilize appropriate tactics for full perimeter control.</p> <p>Mop up to the extent necessary to ensure line security.</p> <p>Repair suppression damage that is not required for perimeter security.</p> <p>Purpose: Maintain the fires current perimeter to ensure no further loss to values at risk. (Structures, grazing land, crops: both bailed and planted.)</p>						
7. Special Instructions:						
<p>The area is open range: livestock and wildlife may be on roadways.</p> <p>Heads-up for potential archeology sites, or areas of cultural importance.</p> <p>East Fork Fire has no IA responsibility. (We will assist the local agencies as requested through OPS by local dispatch.)</p>						
8. Division/Group Communication Summary						
Function	Channel	RX Frequency N/W	RX Tone/NAC	TX Frequency N/W	TX Tone/NAC	Mode
	SEE		COMMO		PLAN	
9. Prepared By (Resource Unit Leader)			Approved By (Planning Section Chief)		Date	Time
CHRIS JOHNSON			STEVE JACKSON		09/05/2017	1630

Division/Group Assignment List (ICS 204 WF)

1. Incident Name:			3.			
EAST FORK			Branch:		Division/Group:	
2. Operational Period: DAY					C	
Date/Time From: 09/06/2017 0700 WED		Date/Time To: 09/06/2017 2100 WED				
4. Operations Personnel						
OPERATIONS CHIEF		MIKE JOHNSTON		BRANCH DIRECTOR		
AIR OPS BRANCH DIRECTOR		ERIC TAPLIN		DIVISION/GROUP SUPERVISOR		SPENCER JOHNSTON MIKE SOLHIEM (T)
5. Resources Assigned this Period						
Strike Team / Task Force / Resource Designator		LWD	Leader	Number Persons	Drop Off PT./Time	Pick Up PT./Time
ENG6 BLM 6601 E-16		09/06	CORBIN	3	EAST FORK ICP/0700	EAST FORK ICP/2100
ENG6 CHINOOK 707 E-7018			MOSNESS	2	EAST FORK ICP/0700	EAST FORK ICP/2100
DOZ2 MOXLEY EXCAVATION 7 E-7045			DAN MOSLEY	1	EAST FORK ICP/0700	EAST FORK ICP/2100
DOZ BALTRUSCH D8 E-7023			WOOD	1	EAST FORK ICP/0700	EAST FORK ICP/2100
DOZ VERPLOGUN D5				1	EAST FORK ICP/0700	EAST FORK ICP/2100
DOZ BLAINE CO D 7				1	EAST FORK ICP/0700	EAST FORK ICP/2100
GRAD BLAINE CO				1	EAST FORK ICP/0700	EAST FORK ICP/2100
WTTS BLAINE CO				1	EAST FORK ICP/0700	EAST FORK ICP/2100
DOZ HILL CO D6				1	EAST FORK ICP/0700	EAST FORK ICP/2100
GRAD HILL CO				1	EAST FORK ICP/0700	EAST FORK ICP/2100
TFLD O-88			JOSH SEDERHOLM	1	EAST FORK ICP/0700	EAST FORK ICP/2100
TFLD (T) O-25		09/07	JESSE TURNER	1	EAST FORK ICP/0700	EAST FORK ICP/2100
TFLD O-65		09/16	DAVID WANDERAAS	1	EAST FORK ICP/0700	EAST FORK ICP/2100
HEQB (T)		09/06	JOSH CHASE	1	EAST FORK ICP/0700	EAST FORK ICP/2100
ENG6 BEAR PAW 8			BEEBEE	2	EAST FORK ICP/0700	EAST FORK ICP/2100
ENG6 DNRC BOX ELDER 1983			GRASS	2	EAST FORK ICP/0700	EAST FORK ICP/2100
WTS BEAR PAW 13				1	EAST FORK ICP/0700	EAST FORK ICP/2100
SOF2		09/16	TOOTER BURDICK	1	EAST FORK ICP/0700	EAST FORK ICP/2100
6. Control Operations/Work Assignments:						
<p>Utilize appropriate tactics for full perimeter control. Mop up to the extent necessary to ensure line security. Repair suppression damage that is not required for perimeter security. Purpose: Maintain the fires current perimeter to ensure no further loss to values at risk. (Structures, grazing land, crops: both bailed and planted.)</p>						
8. Division/Group Communication Summary						
Function	Channel	RX Frequency N/W	RX Tone/NAC	TX Frequency N/W	TX Tone/NAC	Mode
	SEE		COMMO		PLAN	
9. Prepared By (Resource Unit Leader)			Approved By (Planning Section Chief)		Date	Time
CHRIS JOHNSON			STEVE JACKSON		09/05/2017	1630

Division/Group Assignment List (ICS 204 WF)

1. Incident Name:				3.			
EAST FORK				Branch:		Division/Group:	
2. Operational Period: DAY						C	
Date/Time From: 09/06/2017 0700 WED		Date/Time To: 09/06/2017 2100 WED					
4. Operations Personnel							
OPERATIONS CHIEF		MIKE JOHNSTON			BRANCH DIRECTOR		
AIR OPS BRANCH DIRECTOR		ERIC TAPLIN			DIVISION/GROUP SUPERVISOR		SPENCER JOHNSTON MIKE SOLHIEM (T)
7. Special Instructions:							
<p>Utilize appropriate tactics for full perimeter control. Mop up to the extent necessary to ensure line security. Repair suppression damage that is not required for perimeter security. Purpose: Maintain the fires current perimeter to ensure no further loss to values at risk. (Structures, grazing land, crops: both bailed and planted.)</p>							
8. Division/Group Communication Summary							
Function	Channel	RX Frequency N/W	RX Tone/NAC	TX Frequency N/W	TX Tone/NAC	Mode	
	SEE		COMMO		PLAN		
9. Prepared By (Resource Unit Leader)			Approved By (Planning Section Chief)			Date	Time
CHRIS JOHNSON			STEVE JACKSON			09/05/2017	1630

AIR OPERATIONS SUMMARY

Prepared by: Eric Taplin

Prepared Date: 9/5/2017


Prepared Time: 18:26

1. INCIDENT: EAST FORK	2. OPS PERIOD DATE: 9-6-2017 0700-2100	START TIME: 0800	END TIME: 2000	SUNRISE: 643	Sunset Time: 1949
<p>3. REMARKS: <u>SEE AND AVIOD</u> HAYS MOA WILL BE DE-CONFLICTED DAILY BY DISPATCH HAZARDS: Power Lines, Towers, Wildland/Urban Interface. Complete high level recon before Descending low level. Gusty erratic winds, Smoke. High Altitude and High Temps. REPORT UAS SIGHTINGS TO AIR ATTACK. ALL MEDIVACS WILL BE REQUESTED THROUGH COMMUNICATIONS AND COORDINATED THROUGH THE MEDL. APPROPRIATE RESOURCES WILL BE DISPATCHED.</p>					
4. READY ALERT AIRCRAFT Air Medivacs will be coordinated by Communications			5. TFR Notam: FDC 7/5573		

6. PERSONNEL	NAME	PHONE	7. FREQUENCIES A-A FW/TFR A-A RW	AM 119.100 128.075	FM A-19 A-33	8. FIXED-WING- Type/ Make-Model/ N#/ Base N58441 - CE-206 Chris Vero A-52 ATGS
AOBD	Eric Taplin	208-634-9425	Jefferson Direct (Air Attack to Dispatch Only)	171.500 RX/TX Tone 123.0 TX		
ASGS	Blake Ford	435-704-1874	A/G Yellow A/G Primary	A-21	151.220 167.950	LEAD PLANE/ AIR TANKERS - Order as Needed thru ATGS
ATGS	Chris Vero	307-413-2035				AVIATION SUPPORT EQUIPMENT

9. HELICOPTER

FAA N#	T Y	MAKE/ MODEL	BASE	AVAIL	START	REMARKS	FAA N#	T Y	MAKE/ MODEL	BASE	AVAIL	START	REMARKS
N314	1	Kmax	Hayre	0800	0830	A-32							
N928CM	3	Bell 407	Fort Benton	0800	0830	A-57							

INCIDENT RADIO COMMUNICATIONS PLAN I-205		1. INCIDENT NAME		2. DATE/TIME PREPARED		3. OPERATIONAL PERIOD DATE/TIME					
		East Fork Fire		09/05/2017 20:00 HRS		9/6/2017					
4. BASIC RADIO CHANNEL UTILIZATION											
Ch #	Function	Channel Name	Assignment	RX Freq	N/W	RX Tone/NAC	TX Freq	N/W	TX Tone/NAC	Mode Analog (A) Digital (D) Mixed (M)	Remarks
1	COMMAND	CMD 1	CMD	169.5375	N		164.7125	N	103.5	A	MOSES MOUNTAIN
2	COMMAND	CMD 2	CMD	173.0375	N		167.3250	N	103.5	A	BIG JOHN BUTTE
3											
4	FIRE	796 RPTR	LOCAL FIRE	155.1450	N	107.2	155.8650	N	107.2	A	BLAINE COUNTY FIRE REPEATER
5	BEAR PAW	BEAR PAW T/A	T/A	154.3550	N		154.3550	N	114.8	A	
6	MUTUAL AID	MAROON	DIV B	154.2800	N		154.2800	N	156.7	A	
7	MUTUAL AID	RED	DIV A/Z/D	154.0700	N		154.0700	N	156.7	A	
8	MUTUAL AID	SCARLETT	DIV C	154.2950	N		154.2950	N	156.7	A	
9	MUTUAL AID	CORAL		154.2650	N		154.2650	N	156.7	A	
10	TAC	TAC 10		166.7250	N		166.7250	N	103.5	A	
11	TAC	TAC 11		168.0500	N		168.0500	N	103.5	A	
12	IA A/G	YELLOW		151.2200	N		151.2200	N		A	
13	A/G	A/G PRIMARY		167.9500	N		167.9500	N		A	
14											
15	EMS	TAN	MEDIVAC	155.3400	N		155.3400	N	156.7	A	
16	AIRGUARD	AIR GUARD		168.6250	N		168.6250	N	110.9	A	
5. Special Instructions:								USE HUMAN REPEATERS WHEN NECESSARY; SAFE PRACTICE OF RADIO CHECKS ARE ALWAYS WELCOME. New clone as of 9/4/17			
6. I-205 Prepared By: Communications Unit Leader						Name: <i>Grace Anderson</i>		Signature: 			

HEALTH AND SAFETY MESSAGE

SAFETY starts with *YOU* PREDICTABLE IS PREVENTABLE

For Day/Night Operations: September 6, 2017

INCIDENT: **East Fork**

DATE: Sept 6, 2017 TIME: 0700

Major Hazards and Risks:

- **ACCOUNTABILITY:** Each resource on the fire has a supervisor. Know and coordinate with him/her.
- **DRIVING:** Drive defensively, Be aware of unstable & hazardous road conditions, Be alert and watch for public and other non-operational personnel in and around fire areas
- **HEAVY EQUIPMENT OPERATION:** Maintain 50 – 100 ft exclusion area around equipment and 1 ½ times the high of timber. Avoid working below equipment.
- **HAZARD TREES:** Look up, Look down, Look around for signs of fire weakened trees

Fire Order of the Day:

Give clear instructions and be sure they are understood.

- Brief others as needed.
- Give clear and specific Leaders Intent.
- Don't assume they know what you mean.



- Keep it at or below the Speed Limit.
- Share the roads.
- Watch out for Cattle on the roadway.



Watch Out For Me!!!!

- Time of Day, deer tend to move more during dawn and dusk.
 - Look for the group, deer don't usually travel alone, if you see one, keep your eyes open for others.
 - Don't swerve into on-coming traffic or off the shoulder of the road.
 - Use high beam lights after dark.
- Keep your distance, if you strike a deer, don't approach it.

Thanks from your safety team:

Laney Cutshaw, Fred Johnson



DRIVING SAFETY

Vehicles/Roads Category

Driving is one of the most hazardous things we do because we literally perform the task hundreds of times in the course of our daily lives we tend to take it for granted. Based on recent accident trends, vehicle accidents are the source of more deaths and serious injuries to wildland firefighters than any other single cause.

- ◆ To be a safe driver you have to *want* to be one. Take a good hard look at your driving habits. Are you training yourself to do the right things the right way, like fastening your seat belt, checking your mirrors, and maintaining safe following distances?
- ◆ Inattentiveness is a major contributing factor in motor vehicle accidents within the wildland firefighting community. Since the average adult attention span is 15-20 minutes we must develop techniques that allow us to refocus our attention on our driving.
- ◆ Many things can lure our attention away from our driving such as: fatigue, eating and drinking, reading directions and maps, writing, cell phone and radio use, conversation within the vehicle and music.
 - ✓ Drive only when you are well rested and alert and avoid driving during the hours of 10:00 PM and 6:00 AM. Take a 10 to 15 minute break after every 2 hours.
 - ✓ Practice situational awareness; be aware of what is happening in front, behind, and on both sides of your vehicle.
 - ✓ Never drive when taking medications that make you drowsy.
 - ✓ Delegate navigation and communication to a passenger or pull over.
 - ✓ By constantly moving your vision, checking mirrors and distant road conditions, you can avoid highway hypnosis and daydreaming.
 - ✓ Avoid eating or drinking while driving.
 - ✓ When talking with passengers, keep your eyes on the road and both hands on the steering wheel. Avoid serious or argumentative conversations.
 - ✓ Do not be in a hurry, be patient.
- ◆ Safe driving starts with a safe vehicle. Something as simple as under-inflated tires can have serious consequences. Before operating any vehicle, do a walk-around to look for potential problems, make sure the lights and blinkers work, and adjust your seat and mirrors. If it is the first time you have driven the vehicle, make yourself aware of where everything is.

Additional Resources: Video: Firefighter Remember This Series - [Firefighter: Remember This - Engine Rollover: Why This Accident Started Months Ago](#)

Have an idea? Have feedback? Share it.

[EMAIL](#) | [Facebook](#) | MAIL: 6 Minutes for Safety Subcommittee • 3833 S. Development Ave • Boise, ID 83705 | FAX: 208-387-5250

INCIDENT SAFETY ANALYSIS 215a

East Fork - Wednesday, September 06, 2017

8. Location	9. Hazard	6. Control or Abatement Action (Engineering, Administrative, PPE, Avoidance, Education, etc)
All	Hazard Trees	<ul style="list-style-type: none"> ~ Follow "Hazard Tree Safety" guidelines, IRPG page 22. ~ Post lookouts, or use a spotter in mop-up areas with personnel. ~ Don't park vehicles or take breaks in high concentrations of hazard trees. ~ Establish trigger points for disengagement during high wind events. ~ Remember that the hazard zone extends a minimum of 2 1/2 tree heights.
All	Communications	<ul style="list-style-type: none"> ~ Maintain communication with aviation resources, and suppression organization. ~ Ensure all know frequency and protocol for contacting resources. ~ Utilize the ICS 205. ~ Utilize human repeaters when working in dead spots.
All	Coordination with local fire departments	<ul style="list-style-type: none"> ~ Establish a unified command structure ~ Keep unified commanders in a common location ~ Establish common radio frequencies ~ Establish common goals and tactics ~ Encourage accountability of all resources
All	Injury & Medical Emergency	<ul style="list-style-type: none"> ~ Assist injured employee appropriate medical care. ~ Use EMT's on Division for initial care. ~ Contact incident communications for incident within an incident (IWI) ~ Follow the 9 line to communicate IWI information ~ Follow medical protocol as outlined in ICS-206 & IRPG Pgs 99-108
All	Chain Saw Operations	<ul style="list-style-type: none"> ~ Follow "Hazard Tree Safety" guidelines, IRPG page 22 ~ Look up, Look down, Look around for hazard tree indicators. ~ Only fell and buck trees within your expertise, and training. ~ Follow "Procedural Felling Operations" on page 79 in IRPG. ~ Do not fall trees during high wind events. ~ Ensure proper use of all required PPE.
All	Driving & Traffic	<ul style="list-style-type: none"> ~ Practice "Defensive Driving" techniques traveling on all roads and city streets. ~ Use spotters when backing. ~ Honk horn to alert personnel when backing. ~ Keep clutter off dash and inside cab. ~ Follow Driving LCES (Lights, Chock blocks, Emergency brake, Seat belts. ~ Always use headlights. ~ Yield to pedestrians and bicycles. ~ Observe posted speed limits. ~ Use the 3 second rule for following distance when driving. ~ Use chock blocks, turn wheels into hill. ~ Avoid distractions (eating, cell phones, radio). ~ Ensure that windshields are kept clean of dust and bugs. ~ Ensure vehicle is in good repair
All	Heavy Equipment Operations	<ul style="list-style-type: none"> ~ Ensure communications are established with operators. ~ Use hand signals if other communications are unavailable. ~ Maintain a 50'-100' exclusion area around equipment and increase it to 1 1/2 times tree height when in timber. ~ Use a spotter when backing. ~ Avoid working below heavy equipment.
All	Helicopter Operations	<ul style="list-style-type: none"> ~ Stay clear of all bucket drops when suppression actions are in place and allow 1 minute prior to re-entry. ~ Monitor A-G communications. ~ Follow aviation safety guidelines in IRPG and IHOG.

INCIDENT SAFETY ANALYSIS 215a

All	Mop-up & Rehab	<ul style="list-style-type: none"> ~ Do not work above or below personnel during rehab/mop-up operations. ~ Alert crew personnel of rolling debris by yelling to affected individuals. ~ Position debris that could roll vertically on slope. ~ Wear eye protection. ~ Minimize exposure to snags ~ Avoid complacency
All	Wildlife & Livestock	<ul style="list-style-type: none"> ~ Montana is an open range state. Cattle very likely will be on the roads ~ Watch out for wildlife & livestock inside fire area and along roadways. ~ Drive defensively, slow down for blind turns ~ Clean up all debris and trash during each operational period.
All	Bees, Ticks, Mosquitoes	<ul style="list-style-type: none"> ~ Canvas crew members for those with known allergic reactions to stings. ~ Ensure crew members have medication pens if needed. ~ Perform daily self inspection. ~ Use repellent as necessary. ~ Advanced Life Support, multi-dose epi and airway protection. ~ Keep affected area clean and bandaged. ~ Be extra careful when eating and/or drinking to avoid stings to mouth and throat.

East Fork Fire

GREAT BASIN TEAM 2

LINE SUPPLY ORDER FORM
(OSC/Division Supervisor only)

Form Date 6-30-2017

Date & Time Order Was Placed	Order Reference # (Div + #)	Mode of Delivery (Ground/Helo/Pickup @)	Location for Delivery (Division/LZ/DP Lat/Long)
DATE:		(Circle one) GROUND SUPPORT HELICOPTER (Include Elevation) TO BE PICKED UP BY @	
TIME:			
DATE NEEDED:	Time Needed:	Ground Contact:	

Order received in COMMUNICATIONS by:	Name:	Time:
Order received in SUPPLY by:	Name:	Time:
Order received in FOOD UNIT by:	Name:	Time:
Order received in GROUND SUPPORT by:	Name:	Time:
Order received in HELIBASE by:	Name:	Time:
Order delivered/shipped to final location by:	Name:	Time:

#	QUANTITY	ITEM	SHIPPED	PENDING	#	QUANTITY	ITEM	SHIPPED	PENDING
1		Breakfast-Meals			31		Lightweight Pump Kit- ea		
2		Lunch-Meals			32		Hose-1 1/2" -100' lg		
3		Dinner-Meals			33		Hose-1" - 100' lg		
4		MRE's(#of Cases) 12/cs			34		Hose-3/4" - 50' lg		
5		Cubies of Water - ea			35		Reducer-1 1/2" X 1" - ea		
6		Bottled Water-Case			36		Reducer-1" X 3/4" -ea		
7		Gatorade-Case			37		Gated "Y"-1 1/2" - ea		
8		Batteries-AA/box - ea			38		Gated "Y"-1" - ea		
9		Batteries- AAA/C/D - ea			39		Shut off valve 3/4" - ea		
10		Fuel-Unleaded-Gallons			40		In-Line Tee 1 1/2" X 1" - ea		
11		Fuel-Diesel-Gallons			41		Nozzle- 1 1/2" - ea		
12		Fuel-Drip Torch(60/40 mix) gals			42		Nozzle- 1" - ea		
13		Bar oil-QTs/Gallons			43		Nozzle 3/4" - ea		
14		2 cycle oil- saw (1 btl per gallon)			44		First Aid Kit-20 man - ea		
15		2 cycle oil- pump -Qt			45		Chainsaw Kit - ea		
16		Sleeping Bags - ea			46		DIV Pump Kit (next page) - ea		
17		Fiber Tape - rolls			47		DIV Hose lay Kit (next page) - ea		
18		Plastic-roll / sqft			48		Line Spike Hygiene Kit (next page) ea.		
19		Parachute Cord-roll / ft							
20		Shovels - ea.					MISC. Please list below		
21		Pulaski - ea.							
22		Combi - ea.							
23		Fussee - case							
24		Drip Torch-Full/Empty							
25		Backpack Pump-Full/Empty							
26		Slingable Blivet-Suppress 55 gal							
27		Slingable Blivet - Drink 55 gal							
28		Folding Tank 1000/1500 gals					Accountable Property #'s		
29		Pumpkin 1400/3000/6000 gals							
30		Mark III Pump Kit - ea							

East Fire Fire

GREAT BASIN TEAM 2

SAW PARTS ORDER FORM

(Branch/OSC/Division Supervisor's Signature Required)

Form Date 7-2-2017

CREW NAME	RESOURCE NUMBER	CONTACT NAME	CONTACT PHONE #
REQUEST DATE	PICKUP DATE		
APPROVERS PRINTED NAME	APPROVERS SIGNATURE	APPROVERS POSITION	DATE

SAW INFORMATION

Make	Stihl ___ Husqvarna ___ Other _____
Model	
Bar Length	20"__ 22"__ 24"__ 28"__ 30"__ 32"__ 36"__ other__

REQUEST

QUANTITY	PART NAME & NUMBER

For Sprocket(*) & Chain Orders, Fill Out Below

# of Drivers	
Pitch(*)	1/4"__ 3/8"__ .325"__ .404"__ 3/4"__
Gauge	.043__ .050__ .058__ .063__
Tooth Layout	Full__ Semi-Skip__ Full Skip__
Tooth Cut	Chisel__ Micro-Chisel__ Semi-Chisel__ Chamfer Chisel__
#Sprocket Teeth(*)	

UNIT /SECTION	LANDLINE
Liason	406-395-8493
Agency Reps	
Check-In - Demob	406-395-8489
Training/Documentation	406-395-4056
Information	406-395-4275
IC	406-395-8413
Finance	406-395-8382
Procurement	406-395-8488
Time	406-395-8320
Operations/Resources	406-395-5103
Air Ops	406-395-5142
Safety	406-395-5164
Judith Building	406-395-4686
Pryor Building Logistics	406-395-8313
Facilities	406-395-4609
HRSP	406-395-5568
Communications	406-395-5957
Medical	406-395-5835

EAST FORK GREAT BASIN 2 COMMAND STAFF			
ITC1	Kim Martin		801-376-2869
Deputy ITC1	Paul Broyles		208-869-3495
SOF1	Laney Cutshaw		208-315-3408
SOF2	Fred Johnson		435-851-1546
HRSP	Karen Mora		970-420-5108
LOFR	Vickie Lytle		303-941-2078
PIO1	David Eaker		435-619-1651
PIO1	Brian Harris		208-634-6945
PIOF (T)	Martin Dalukas		406-459-4031
PIO2	Patty Bean		406-570-9270
OSC1	Chad Olsen		208-731-1245
OSC1	Mike Johnston		307-413-2022
OSC1	Rod Collins		530-448-6089
OSC 1 (T)	Sean Johnson		208-965-6206
OSC2 (T)	Robert Lopez		435-691-7271
FSC1	Carol Bass		775-296-2397
PSC1	Steve Jackson		801-541-0827
LSC1	Megan Timoney		801-557-2123

Don't put your **head in the sand** and ignore what is happening around you



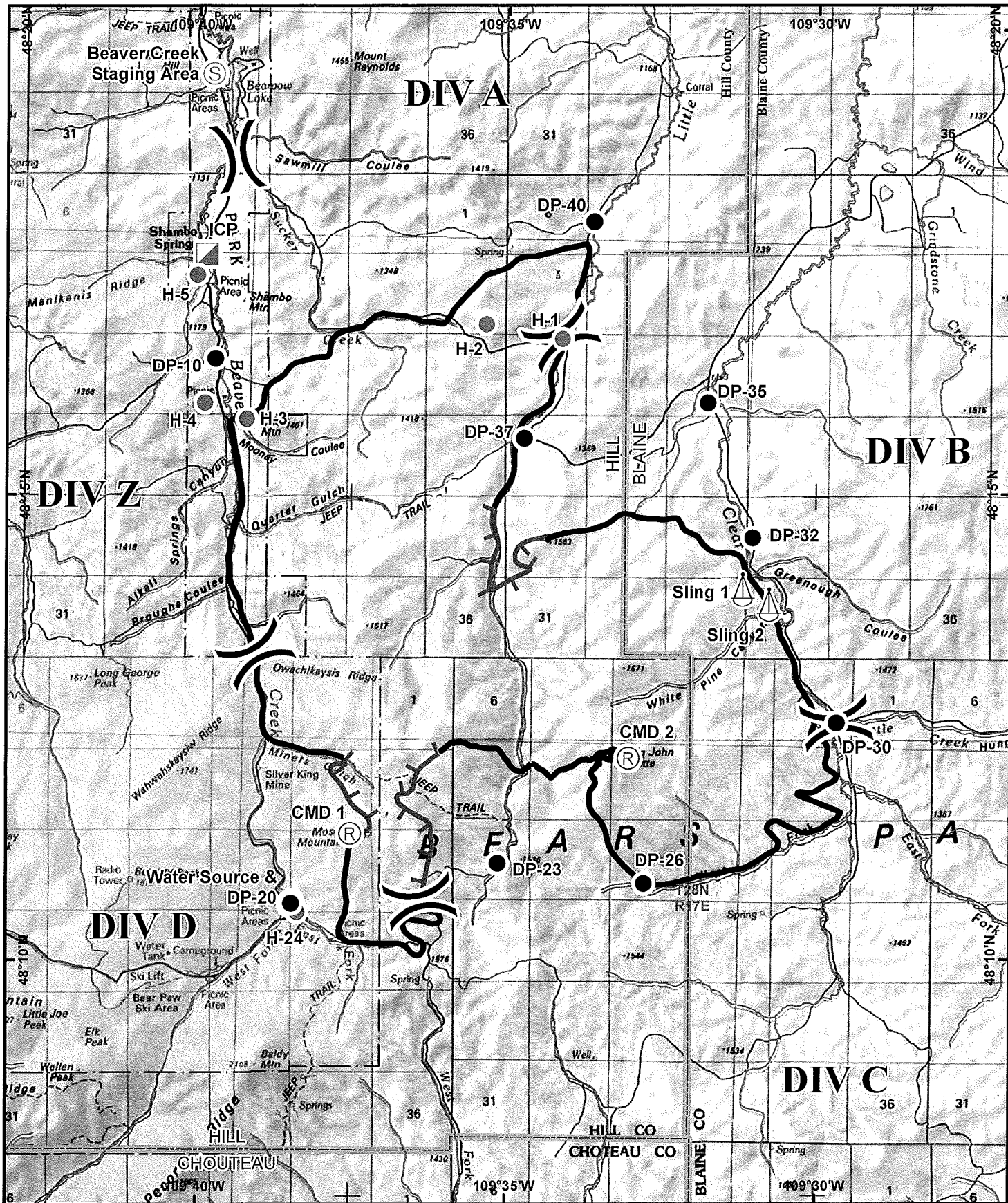
Just as complacency increases accident rates, it also increases numbers of human resource contacts and complaints of inappropriate behavior, harassment, and discrimination.


Avoid Complacency

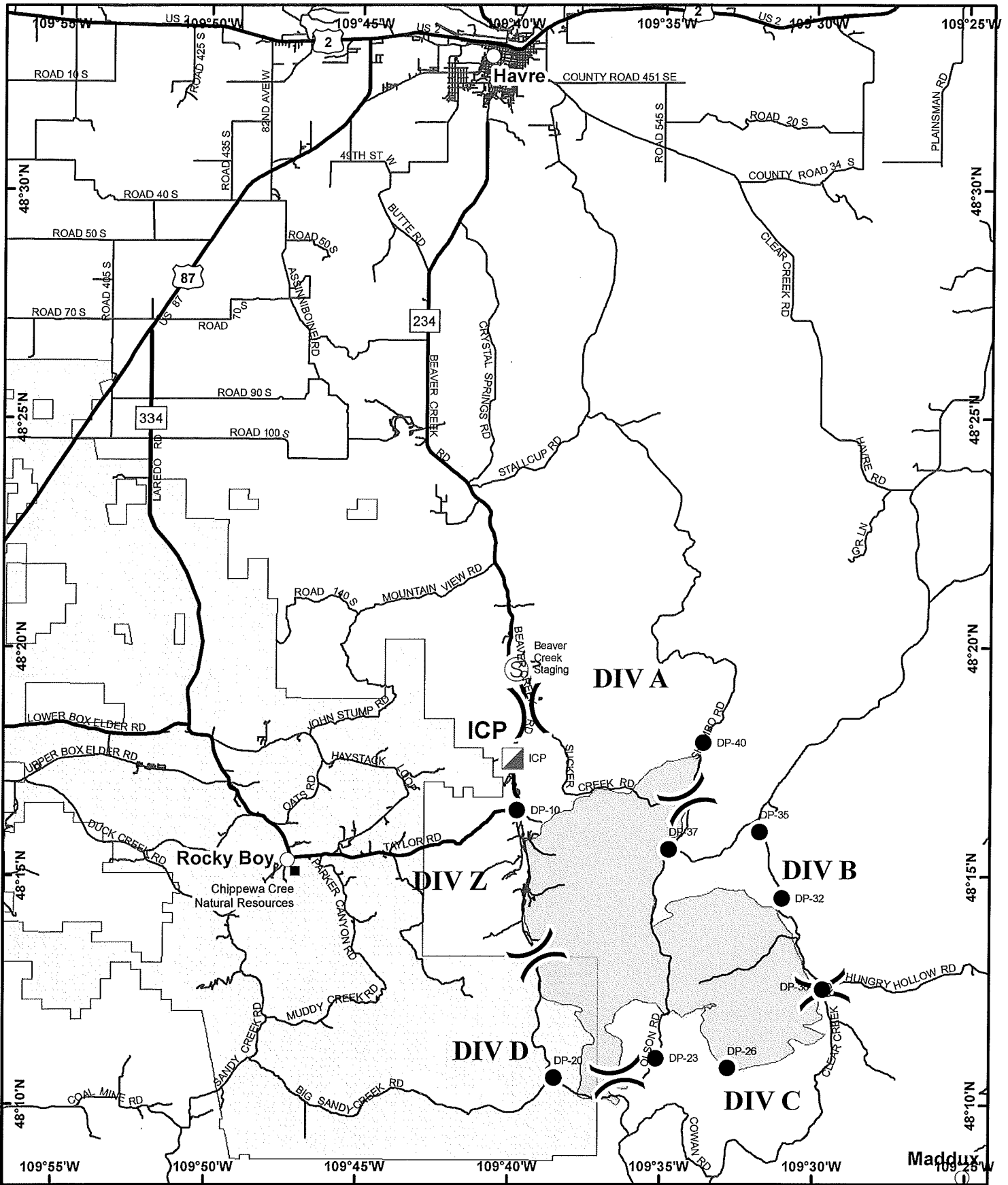
Karen Mora

Human Resource Specialist

970-420-5108 (call or text)



<p>IAP East Fork 9/6/2017 0700 21,518 Acres</p> 	● Drop Point	⌘ Division Break	▬ Uncontrolled Fire Edge
	● Helispot	⚓ Sling Site	▬ Completed Line
	▣ Incident Command Post	Ⓜ Repeater	▭ County boundary
	Ⓞ Staging Area		Rocky Boy Reservation
	Ⓜ Water Source		Map created Sept 2, 2017 2230 hrs NAD83 UTM Zone 12N

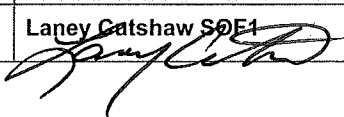


Transportation East Fork 9/6/2017 0700 21,518 Acres		Incident Command Post	Division Break
		Drop Point	Uncontrolled Fire Edge
		Staging Area	Rocky Boy Reservation

Map created Sept 2, 2017, 2200 hrs
 NAD83 UTM Zone 12N

UNIT LOG	1. Incident Name	2. Date Prepared	3. Time Prepared
	East Fork		
4. Unit Name/Designators	5. Unit Leader (Name and Position)		6. Operational Period
7. Personnel Roster Assigned			
Name	ICS Position		Home Base
8. Activity Log			
Time	Major Events		
9. Prepared by (Name and Position)			

MEDICAL PLAN (ICS 206 WF)

1. Incident/Project Name			2. Operational Period		
EAST FORK FIRE			09/05/2017 0700-2100		
3. Ambulance Services					
<u>Name</u>	<u>Complete Address</u>	<u>Phone/Frequency</u>	<u>Advanced Life Support (ALS)</u>		
			Yes	No	
Havre Fire Department	520 4th Street, Havre	406-265-4361		X	
Rocky Boy Ambulance	RR1 Box 664, Box Elder, MT. 59521	406-395-4374		X	
Great Falls Emergency Services	514 9th Avenue South Great Falls, MT 59405	406-453-5300	X		
Bruce Toy MEDL	East Fork Fire ICP	775-815-4888	X		
Joe VanWalraven MEDL	East Fork Fire ICP	775-240-7054	X		
4. Air Ambulance Services					
Mercy Air Ambulance	800-972-4000	Fixed Wing / Rotor			
Great Falls Dispatch for Resources	406-453-4300	MT National Guard - N/V and Hoist Capable.			
5. Hospitals					
<u>Name</u> Complete Address	<u>Complete Address</u>	<u>Travel Time</u> Air Land	<u>Phone/Freq.</u>	<u>Helipad</u> Yes No	<u>Level</u> <u>of Care</u> <u>Facility</u>
Northern Montana Health Care	30 13th St, Havre MT 59501	10 min / 20 min	406-265-4361	Yes	Level 3 ER
Intermountain Burn Center	University of Utah 50 N Medical Drive Salt Lake City 84132	1 Hour Fixed by Fixed Wing	801-581-2700	Yes	Burn Center
Benefis Hospital	1101 26th St. South Great Falls, MT	Air 40 Min Ground 1.5 Hr	406-455-5000	Yes	Level 2 Trauma Center
6. Div. / Branch/ Group / Other	Area Location Capability	EMS			
East Fork Fire ICP	Medical	ALS, AED, C-Spine, Peds, Sager, Pain Meds			
7. Medical Special Instructions					
All medicals will go through East Fork Fire Communications, and the MEDL.					
8. Prepared By (Medical Unit Leader)	9. Date/Time	10. Reviewed By (Safety Officer)		11. Date/Time	
Bruce Toy MEDL	09/05/2017	Laney Catshaw S0E1 		09/05/2017	

MEDICAL PLAN (9-line)



Medical Incident Report



FOR ALL MEDICAL EMERGENCIES: IDENTIFY ON SCENE INCIDENT COMMANDER BY NAME AND POSITION AND ANNOUNCE "MEDICAL EMERGENCY" TO INITIATE RESPONSE FROM IMT COMMUNICATIONS/DISPATCH.

Use items one through nine to communicate situation to communications/dispatch.

1. CONTACT COMMUNICATIONS/DISPATCH

Ex: "Communications, Div. Alpha. Stand-by for Priority Medical Incident Report." (If life threatening request designated frequency be cleared for emergency traffic.)

2. INCIDENT STATUS: *Provide incident summary and command structure.*

Nature of Injury/Illness	<i>Describe the injury (Ex: Broken leg with bleeding)</i>
Incident Name	<i>Geographic Name + "Medical" (Ex: Trout Meadow Medical)</i>
Incident Commander	<i>Name of IC</i>
Patient Care	<i>Name of Care Provider (Ex: EMT Smith)</i>

3. INITIAL PATIENT ASSESSMENT: *Complete this section for each patient. This is only a brief, initial assessment. Provide additional patient info after completing this 9 Line Report.*

Number of Patients:.	Male / Female.	Age:.	Weight:.
Conscious? <input type="checkbox"/> YES <input type="checkbox"/> NO = MEDEVAC!			
Breathing? <input type="checkbox"/> YES <input type="checkbox"/> NO = MEDEVAC!			
Mechanism of Injury: <i>What caused the injury?</i>			
Lat/Long (Datum WGS84) <i>Ex: N 40° 42.45' x W 123° 03.24'</i>			

4. SEVERITY OF EMERGENCY, TRANSPORT PRIORITY

SEVERITY	TRANSPORT PRIORITY
<input type="checkbox"/> URGENT-RED Life threatening injury or illness. <i>Ex: Unconscious, difficulty breathing, bleeding severely, 2° – 3° burns more than 4 palm sizes, heat stroke, disoriented.</i>	Ambulance or MEDEVAC helicopter. Evacuation need is IMMEDIATE.
<input type="checkbox"/> PRIORITY-YELLOW Serious Injury or illness. <i>Ex: Significant trauma, not able to walk, 2° – 3° burns not more than 1-2 palm sizes.</i>	Ambulance or consider air transport if at remote location. Evacuation may be DELAYED.
<input type="checkbox"/> ROUTINE-GREEN Not a life threatening injury or illness. <i>Ex: Sprains, strains, minor heat-related illness.</i>	Non-Emergency. Evacuation considered Route of Convenience.

5. TRANSPORT PLAN:

Air Transport: (Agency Aircraft Preferred) .

<input type="checkbox"/> Helispot	<input type="checkbox"/> Short-haul/Hoist	<input type="checkbox"/> Life Flight	<input type="checkbox"/> Other
-----------------------------------	---	--------------------------------------	--------------------------------

Ground Transport: .

<input type="checkbox"/> Self-Extract	<input type="checkbox"/> Carry-Out	<input type="checkbox"/> Ambulance	<input type="checkbox"/> Other
---------------------------------------	------------------------------------	------------------------------------	--------------------------------

6. ADDITIONAL RESOURCE/EQUIPMENT NEEDS:

<input type="checkbox"/> Paramedic/EMT(s)	<input type="checkbox"/> Crew(s)	<input type="checkbox"/> SKED/Backboard/C-Collar
<input type="checkbox"/> Burn Sheet(s)	<input type="checkbox"/> Oxygen	<input type="checkbox"/> Trauma Bag
<input type="checkbox"/> Medication(s)	<input type="checkbox"/> IV/Fluid(s)	<input type="checkbox"/> Cardiac Monitor/AED
<input type="checkbox"/> Other (i.e. splints, rope rescue, wheeled litter)		

7. COMMUNICATIONS:

Function	Channel Name/Number	Receive (Rx)	Tone/NAC *	Transmit (Tx)	Tone/NAC *
<i>Ex: Command</i>	<i>Forest Rpt, Ch. 2</i>	<i>168.3250</i>	<i>110.9</i>	<i>171.4325</i>	<i>110.9</i>
COMMAND					
AIR-TO-GRND					
TACTICAL					

*(NAC for digital radio system)

8. EVACUATION LOCATION:

Lat/Long (Datum WGS84) <i>EX: N 40 42.45' x W 123 03.24'</i>
Patient's ETA to Evacuation Location:
Helispot/Extraction Size and Hazards:

9. CONTINGENCY:

Considerations: <i>If primary options fail, what actions can be implemented in conjunction with primary evacuation method? Be thinking ahead...</i>	REMEMBER: Confirm ETA's of resources ordered Act according to your level of training Be Alert. Keep Calm. Think Clearly. Act Decisively.
--	---