

Sprague

MT-GNP-000526

PPK9EX (1502)

757402

PF.FSK9EX017.00.1

Adair Peak

MT-GNP-000558

PPK9J0 (1502)

PF.FSK9J0017.00.1

Elder Creek

MT-GNP-000737

PPLBK6 (1502)

PF.FSLBK6017.00.1



Incident Action Plan

Monday September 11, 2017

Day Operations: 0700 - 2100

Night: 1800 - 1000

Northern Rockies Wildland Fire Management Team

Incident Commander

Diane Hutton

Joe Sampson (T)

INCIDENT OBJECTIVES	1. Incident Name	2. Date	3. Time
	Sprague/Adair Peak/Elder Creek	09/10/2017	1800

4. Operational Period: 9/11/2017 Operational Period: Day: 0700 – 2100 Night: 1800-1000

Current Strategy:

- Suppression objective under a confine/contain strategy focusing on point protection of assets for the Sprague, Adair Peak and Elder Creek fires.

Leaders Intent:

- Firefighter and public safety will be the highest priority. Consider risk management and mitigation in developing strategy and implementation tactics. Tactics should be commensurate with values at risk.

Incident Objectives:

- Reduce the risk to firefighters by utilizing a point protection strategy. This strategy will reduce risk and exposure to maintain a high likelihood for success while protecting values at risk as well as wilderness values. Reduce the risk to the public by coordinating establishment of area closures as well as developing a well-planned and coordinated evacuation response.
- Keep the fire west of the Continental Divide to prevent large scale fire growth to the east outside the park boundary and develop and update a long term plan for the management of the Sprague Fire.
- Provide for protection of values at risk which include; Sperry Chalet Complex, Lake McDonald development area, Crystal Ford Bridge, North Lake McDonald structures, the Going to The Sun Corridor, Sprague Creek C.G. and Avalanche Creek Area, Harrison Lake Cabin near or within the Sprague fire; Logging Lake Patrol Cabins, Logging Lake Ranger Station and Campgrounds near the Adair Peak fire; Kishenehn Cabins, Kintla Ranger Station and Campground, Upper Kintla Patrol Cabin and private structures west of the Park boundary near Elder Creek.
- Maintain positive relationships with host unit, concessionaires and public by providing timely and accurate information.
- Coordinate mitigation of resource concerns with Glacier National Park Resource Management Division through the use of an assigned Resource Advisor.
- Coordinate with the Canadians on the Elder Creek Fire as well as Flathead County and the Flathead National Forest on Elder Creek and Adair Peak fire should these fires move to the west.

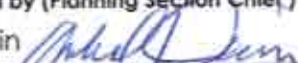
Incident Requirements:


- Adhere to NWCG Guide to Preventing Aquatic Invasive Species (AIS) Transport by Wildland Fire Operations (PMS444) and follow AIS Best Management Practices. Identify acceptable aircraft dip sites on IAP maps.
- Mitigate impacts to threatened and endangered species by following the Grizzly Bear ecosystem food storage order and through bear encounter and bear spray training.
- Protect wilderness character by utilizing Minimum Impact Suppression Tactics (MIST) where appropriate. Use of retardant and burnout operations must be specifically approved by the Park Superintendent.
- Provide for initial attack within designated response area. Assist, as needed, in initial attack outside of the delegated initial attack area. See IA map.
- Financial consideration will be consistent with best approach to achieve fire management objectives in consideration of values at risk.


6. Weather Forecast for Period See attached Weather Forecast

7. General Safety Message: See attached Safety Message

8. Attachments (mark if attached)		
<input checked="" type="checkbox"/> Organization List - ICS 203	<input checked="" type="checkbox"/> Weather Forecast	<input checked="" type="checkbox"/> Safety Message
<input checked="" type="checkbox"/> Div. Assignment Lists - ICS 204	<input checked="" type="checkbox"/> Fire Behavior Forecast	<input checked="" type="checkbox"/> Incident within an Incident
<input checked="" type="checkbox"/> Communications Plan - ICS 205	<input checked="" type="checkbox"/> Incident Map	<input checked="" type="checkbox"/> Unit Log - ICS 214
<input checked="" type="checkbox"/> Medical Plan - ICS 206	<input checked="" type="checkbox"/> Air Operations- ICS 220	

9. Prepared by (Planning Section Chief)
Mike Davin 

9. Approved by (Incident Commander)
Diane Hutton 

ORGANIZATIONAL STRUCTURE CHART		9. Operations Section	
1. Incident Name SPRAGUE/ADAIR PEAK/ELDER CREEK		Branch Chiefs	
2. Date: September 11, 2017		Operations	
4. Operational Period: Day Operations 0700 - 2100 Night 1800 - 1000		Brad McBratney	Ashley Sites
5. Incident Commander and Staff		Divisions	
Incident Commander	Diane Hutton; Joe Sampson (T)	M	JT Gilman Nick Jeros (T)
Deputy		W	Paul Diaz
Safety Officer	Kevin Boness; Bobby Sutton (T)	Structure Protection	Kevin Smith Dana Pelton (T)
Information Officer	Peri Suenram/Glenda Scott	Law Enforcement Evacuation	Michael O'Mahoney Paul Austin
6. Glacier National Park Representatives		Night	
Superintendent	Jeff Mow	Adair Peak	Ashley Sites
Assist Superintendent	Eric Smith	Elder Creek	Zack Gidley
Chief Ranger	Paul Austin		
Fire Management Officer	Dave Soleim		
Duty Officer	Todd Opperman/Nate Benson		
Resource Advisor	Dan Jacobs		
7. Planning Section			
Chief	Mike Davin		
Resource/Demob Unit	Marla Rodgers/Vicki Stephens(T)		
ITSS	Rosemarie Mazzocchi (T)		
Situation Unit	Kristen Sanders		
Long Term Analyst	Tim Bumgarner		
GIS Specialist	Ray Backstrom; Howard Williams (T)		
Fire Behavior			
Meteorologist	Phil Manuel	A. Air Operations Branch	
8. Logistics Section		Branch Director	
Chief	Russ Riebe; Bill Lauer	Air Attack Supervisor	
Supply Unit	Karl Meitzner	Air Support Supervisor	Steve Croy
Facility Unit	Peter Pappas		
Base Camp		Air Tanker Coordinator	
Ground Support Unit	Kelly Helget		
Security Unit	Michael O'Mahoney	10. Finance	
Communications Unit	Todd Orr; Chris Gentili (T)		
Communications Tech	Jim Olivarez	Chief	Rob Schuller(T)
Medical Unit	Linda Barbee	Time Unit	Erin Lally
Receiving Distribution	Chris Hoge	Cost Unit	Joyce Anderson
Prepared by: Marla Rodgers, RESL 			



Incident Fire Weather Forecast



FORECAST NO: 20

NAME OF FIRES: Sprague / Adair Peak / Elder Cr.

PREDICTION FOR: 0700 Mon. – 0700 Tue.

UNIT: NPS Glacier NP

SHIFT DATE: Monday, September 11, 2017

SIGNED:

Phil Manuel
Phil Manuel
Incident Meteorologist

TIME AND DATE

FORECAST ISSUED: 1900 September 10, 2017

...Trending Warmer And Drier...

WEATHER DISCUSSION: High pressure will build across the central Rockies providing a return to warmer temperatures. Clockwise flow around the High will maintain a westerly breeze across the Northern Rockies with some modest gusts for the higher elevations. No rain is forecast through Tuesday, however confidence is increasing for a season altering (i.e. wetter, colder) event toward the end of the week.

WEATHER FORECAST FOR MONDAY (DAY-SHIFT):

WEATHER: Sunny and warmer. Gusty afternoon westerly breeze.

TEMPERATURES: 3500-5000ft: 74-82°, 5500-7500ft: 65-73°.

HUMIDITY: Minimum 18-24% valleys, 25-30% upper slopes and ridge top.

20 FT WINDS:

RIDGETOP – West-southwest 10 to 20 mph with gusts 25 mph.

SLOPE/VALLEY – West-southwest 5 to 10 mph with gusts 15 mph.

HAINES INDEX: 4 low.

LAL: 1

CWR: 0

TONIGHT (NIGHT-SHIFT):

Clear. Diminishing winds. Thermal belt developing between 5000' and 6500' with poor humidity recovery. Min temperatures 38-45° valleys, 46-54° slopes and ridgetops. Max RH 70-85% valleys, 30-45% mid-slope to ridgetops. Ridgetop winds: Southwest 10 mph. Valley winds: Southwest 5 mph, becoming downslope downvalley after 2100. **LAL:** 1 **CWR:** 0

OUTLOOK FOR TUESDAY:

Sunny. Temperatures continue to warm with lower humidity. Highs 75-85° valleys, and 65-74° slopes/ridges. Min RH 15 to 25%. Ridgetop winds: West-southwest 10 to 15 mph with gusts 20 mph. Slope valley winds: Southwest 4 to 8 mph...with gusts 12 mph.

Haines Index: 5 moderate.

LAL: 1

CWR: 0

EXTENDED FORECAST (Wednesday Through Friday):

Confidence is high for wetter colder weather toward the end of the week. Increasing clouds Wednesday will begin transition to a cloudy Thursday and Friday with rain developing Thursday and lingering into Friday. There is an opportunity for the rain to change over to a period of snow in the higher elevations (above 6,000 feet) late Thursday night and Friday. Temperatures will trend colder with highs of 40 to 55 Thursday and Friday. Min RH 20 to 30% Wed. Min RH 60-80% Thursday and Friday. Westerly breezes Wednesday will shift to the northeast by the end of the week as moisture moves into the area.

Please email weather observations, including pictures of smoke/fire behavior...

phillip.manuel@noaa.gov

Sprague / Adair Peak / Elder Creek - General Weather Outlook

For Planning Purposes Only, see the Official Forecast

Forecast made 10 Sep/1700 - Incident Meteorologist (IMET) Phil Manuel

Day	Rain / Higher Elv. Snow					
	Mon	Tue	Wed	Thu	Fri	Sat
Clouds @ 1500 (%)	10	0	40	100	100	50
Avg. Max Temp (F)	77	80	71	52	48	55
Min Humidity (%)	20	18	30	75	80	40
Ridge Wind (mph)	15	12	10	7	9	6
Wind Direction *	WSW	WSW	SW	NE	NE	SE
LAL	1	1	1	1	1	1
Precip Chance (%)	0	0	30	80	70	20
Haines Index	4	5	3	2	2	2
KEY:	Moderate Burning Conditions	Take Caution - Critical Burning Conditions			Extreme Burning Conditions	
	Clouds	>30%	15	to	30	<15%
Avg Max Temp	<70F	70	to	80	>80F	
Min Humidity	>30%	20	to	30	<20%	
Ridge Wind	<10mph	10	to	20	>20mph	
*Wind Direction	NNW Through NNE Wind Direction Would be Criticality When It Occurs					
LAL	< 4	3	> 4			
Precip Chance	>30%	20	to	30	<20%	
Haines Index	< 4	5	6			

Five or more EXTREME blocks in a day equals the potential for a Critical Weather Day

This forecast matrix was developed for the Sprague / Adair Peak / Wildfire and uses criteria specific for this incident. Every incident will respond to conditions differently and adjustments to the formulas and or categories used may be needed.

FIRE BEHAVIOR FORECAST

FORECAST NUMBER: 20

NAME OF FIRE: Sprague / Adair Peak /
Elder Creek

UNIT: Glacier NP

PREDICTION FOR: Day Shift / Night Shift

SHIFT DATE: 9/11/17

SIGNED: *Boyd Lebeda*

FIRE BEHAVIOR ANALYST

TIME AND DATE FORECAST ISSUED: 9/10/2017, 2000 Hours

Weather Summary: See attached Fire Weather Forecast.

Fire Behavior - General

Fires will be active today with the breezy west winds. Heat along the perimeter will gather strength and get organized. The fuel bed is still very dry and winds will move fire rapidly when fuel, topography and wind align. Expect an active burning period from 1500-2200.

Sprague Fire - Specific:

DIV M: Mt Brown / Lower Snyder Creek: Fire will flank and back from the shoulder of Mt. Brown down toward lower Snyder Creek and the McDonald Lake Lodge and work up valley on upper slopes. Expect surface spread, torching, group torching and spotting. Look for roll out from the slope overs on the west side of Mt. Brown. Look for possible runs or spotting toward the Mt. Brown Lookout.

DIV W: Fish Lake / Snyder Ridge: Fire will back and flank downhill toward Going to the Sun Road.

Lincoln Creek: Fire is established in creek bottom and will move up the side slopes toward Snyder Ridge and up valley in Walton Creek with running and group torching where fuels and slope align.

Walton Creek: Expect running, torching, group torching, short crown runs and spotting where fuels and slope align. Expect possible movement toward the Harrison drainage.

Upper Sprague Creek: Residual heat will continue in pockets of available fuel as mop up continues.

Structure Group/IA: Kalispell Dispatch Area ERC is 51 – between the 90th and the 97th percentile.

Adair Peak Fire - Specific:

North side – Mixed Conifer on slopes down to Logging Lake. Expect backing, flanking, torching, roll out and possible spotting up valley toward the upper Logging Lake patrol cabin.

South Side – Open canopy Tamarack and mixed conifer regen in Wolf Gun Burn (2003). Continued activity on northwest slope of Wolf Gun Peak. Expect surface spread, group torching and spotting. Slope and fuels driven runs.

Elder Creek Fire - Specific:

North Fork Flathead – Fuels are mainly closed canopy Lodgepole pine. Expect backing, flanking, torching, and roll out as wind pushes fire back onto itself.

Kishenehn Creek – Open canopy Spruce-fir, Douglas-fir and Tamarack. Expect flanking, surface spread, torching, group torching and spotting to the northeast.

Weather and Fire Behavior Trigger Points:

Thresholds from Kalispell Dispatch Area Pocket Card:

- 20' Wind Speed over 10 mph, RH less than 25%, Temperature over 85, 1000-Hour Fuel Moisture less than 15%
- Today: 20' Wind Speed 13mph, min RH 25%, Temperature 73, 1000-Hour Fuel Moisture 13%

<u>Spread Rates/Spotting/Flame lengths</u>	ROS	FL	Crown Fire ROS	Spotting	PIG
165 – High load Timber – Shrub	8 ch/hr	7 ft	30 ch/hr	0.3 miles	Up to 65%
185 – Cedar/Hemlock	5	2	30	0.3	Up to 65%
183 – Moderate Load Conifer Litter	2	1-2	30	0.3	Up to 65%

Air Operations: Areas of morning inversion until around 1200 may inhibit air ops.

Safety: Look Up, Down and Around: Assess Fuel Characteristics: Heavy loading of dead and down – ladder fuels – tight crown spacing – numerous snags. Pay attention to your environment.

3. Incident Name SPRAGUE	4. Operational Period Date: 09/11/2017	Time: 0700 - 2100
------------------------------------	---	-------------------

5. Operations Personnel			
Operations Chief	Ashley Sites / Brad McBratney	Division/Group Supervisor	JT Gilman / Nicholas Jeros (T)
Branch Director		Air Support Group Supervisor	Steve Croy

6. Resources Assigned This Period						
Strike Team/Task Force/ Resource Designator	Last Shift	Leader	No. Pers.	Trans. Needed	Drop Off PT./Time	Pick Up PT./Time
O-2.9 WFM Saguaro* (EMT)	9/18	Jon Freeman	8	N	DP1 / 0700	DP1 / 2100
E-68 ENG6 Westminster 165* (EMT)	9/12	Richard Martin	3	N	DP1 / 0700	DP1 / 2100
E-69 ENG4 Outback Firefighting	9/20	Aiden Stewart	3	N	DP1 / 0700	DP1 / 2100
E-70 ENG4 Great Basin Fire	9/24	Hal Stoker	3	N	DP1 / 0700	DP1 / 2100
E-75 ENG6 Ring of Fire* (EMT)	9/13	Ryan Schlater	3	N	DP1 / 0700	DP1 / 2100
E-92 ENG6 FS 671*(EMT)	9/18	Erik Danko	3	N	DP1 / 0700	DP1 / 2100
E-93 ENG6 Flat Rock	9/18	Cody Blair	3	N	DP1 / 0700	DP1 / 2100
E-109 ENG6 NPS Apostle Islands	9/12	Adlai Mann	3	N	DP1 / 0700	DP1 / 2100
E-80 WTS2 Wendt Trucking	9/18	JD Wendt	1	N	DP1 / 0700	DP1 / 2100
E-81 WTS2 Sleepy Hollow	9/18	John Goodman	1	N	DP1 / 0700	DP1 / 2100
E-100 WTS1 Montrose Hell Fighters	9/18	James Robinson	1	N	DP1 / 0700	DP1 / 2100
E-101 WTS1 AJ Construction	9/18	JD Parsons	1	N	DP1 / 0700	DP1 / 2100
E-112 Mini Excavator	9/23	Chance Gabbert	1	N	DP1 / 0700	DP1 / 2100
THSP NPS (Wrap)		Scott Lane	2	N	DP1 / 0700	DP1 / 2100
O-151 EMTF	9/12	David Kresge	1	N	DP1 / 0700	DP1 / 2100

7. Control Operations

Tasks:

- Monitor the fire progression along the west flank of Mount Brown and monitor fire spread towards Mt. Brown Lookout.
- Look for opportunities to check fire spread toward the Lake McDonald Complex.
- Utilize aviation including CL-415's as necessary.
- Assess control options along the Going to the Sun Road.
- Continue with structure protection on the north end of Lake McDonald Complex. Continue to run Rain for Rent sprinklers.
- Utilize mini excavator and dump trucks to remove larger fuels.
- Continue to test structure protection equipment in Avalanche Creek Area.

Purpose: Continuously seek opportunities to stop fire spread to the west. Implement protection strategies for values at risk.

End State: Season ending event occurs with no significant injuries and minimum impacts to identified NPS values at risk and private lands.

8. Management Action Points

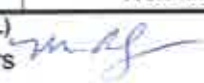

- DIVS: See MAP atlas for exact MAP line locations and action requirements.
- Fire has crossed a portion of MAP#15. If fire crosses additional portions of MAP#15 or MAP#16 contact Operations.
 - MAP #15 is north south line at approximately a fuel type change from mixed conifer to cedar-hemlock.
 - MAP #16 is a north south line approximately 1/4 mile east of the Going to the Sun Road.

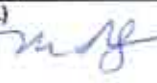

9. Special Instructions

- For any incidents involving public visitors, LE or EMS, contact Sprague Communications on Command channel 8.

10. Communications					
Function	Frequency - RX	Frequency - TX	Tone	Channel	Comments
Command (primary)	170.4125	165.9625	TX / 114.8	8	
Command	170.0125	165.2500	TX / 114.8	7	
Tactical	168.0500	168.0500	114.8	1	
Air to Ground	168.0125	168.0125		13	


Prepared by (RESL) Marla Rodgers	Approved by (PSC) Mike Davin	Date 09/10/2017	Time 2000
-------------------------------------	---------------------------------	--------------------	--------------

ASSIGNMENT LIST		1. Branch			2. Division/Group		
					W		
3. Incident Name		4. Operational Period			Time: 0700 - 2100		
SPRAGUE		Date: 09/11/2017					
5. Operations Personnel							
Operations Chief		Ashley Sites Brad McBratney		Division/Group Supervisor		Paul Diaz	
Branch Director				Air Support Group Supervisor		Steve Croy	
6. Resources Assigned This Period							
Strike Team/Task Force/ Resource Designator		Last Shift	Leader	No. Pers.	Trans. Needed	Drop Off PT./Time	Pick Up PT./Time
O-114 ICT5		9/14	Nathan Maurer	1	N	DP20 / 0700	DP20 / 2100
O-115 FFT2		9/14	Calvin Ballenger	1	N	DP20 / 0700	DP20 / 2100
O-119 FFT2		9/14	Rick Yates	1	N	DP20 / 0700	DP20 / 2100
O-126 FFT2		9/14	Naomi Mills	1	N	DP20 / 0700	DP20 / 2100
O-127 ICT4-t		9/14	Chris Surgenor	1	N	DP20 / 0700	DP20 / 2100
O-1047 THSP			John Helton	1	N	H2 / 1000	DP20 / 2100
7. Control Operations							
Tasks:							
<ul style="list-style-type: none"> > Aggressively mop up all spots at Sperry Complex. > Monitor fire progression along west flank and into Lincoln Creek and south flank of Walton Creek. > Monitor fire progression west of Snyder Ridge. > Continue bucket work as needed, if conditions allow. Utilize CL-415's as appropriate. 							
Purpose: Implement protection strategies for values at risk.							
End State: Season ending event occurs with no significant injuries and minimum impacts to identified NPS values at risk and private lands.							
8. Management Action Points							
<ul style="list-style-type: none"> > DIVS: See MAP atlas for exact MAP line locations and action requirements. > Fire has crossed a portion of MAP#15. If fire crosses additional portions of MAP#15 or MAP#16 contact Operations. <ul style="list-style-type: none"> • MAP #15 is a north south line at approximately a fuel type change from mixed conifer to cedar-hemlock. • MAP #16 is a north south line approximately ¼ mile east of the Going to the Sun Road. 							
9. Special Instructions							
<ul style="list-style-type: none"> > For any incidents involving public visitors, LE or EMS, contact Sprague Communications on Command, channel 8. > Take weather observations hourly and call in to Communications. 							
10. Communications							
Function	Frequency – RX	Frequency – TX	Tone	Channel	Comments		
Command (primary)	170.4125	165.9625	TX / 114.8	8			
Command	170.0125	165.2500	TX / 114.8	7			
Tactical	168.2000	168.2000	114.8	2			
Air to Ground	168.0125	168.0125		13			
Prepared by (RESL) Marla Rodgers 		Approved by (PSC) Mike Davin 		Date		Time	
				09/10/2017		2000	

ASSIGNMENT LIST		1. Branch			2. Division/Group		
					Law Enforcement / Evacuation		
3. Incident Name		4. Operational Period			Time: 0700 - 2100		
SPRAGUE		Date: 09/11/2017					
5. Operations Personnel							
Operations Chief	Ashley Sites Brad McBratney		Division/Group Supervisor		Law Enforcement: Mike O'Mahoney Evacuation: Paul Austin		
Branch Director			Air Support Group Supervisor		Steve Croy		
6. Resources Assigned This Period							
Strike Team/Task Force/ Resource Designator	Last Shift	Leader	No. Pers.	Trans. Needed	Drop Off PT./Time	Pick Up PT./Time	
O- 24 SEC 1 L-21/Lead LE	9/18	Mike O'Mahoney	1	N	ICP / 0600	ICP / 2100	
O-94 SEC1 L-24/Night Team Lead	9/15	Tim Lopez	1	N	ICP Roving / 1800	ICP Roving / 0900	
O-171 SEC1 W-12	9/17	Joshua Stek	1	N	St.Marys / 1800	St.Marys / 0900	
O-178 SEC1 L-23	9/11	Jonathan Rhodes	1	N	Apgar TP / 1800	Apgar TP / 0900	
O-195 SEC1 L-25	9/20	Ramon Caballero	1	N	Apgar TP / 0600	Apgar TP / 1800	
O-193 SEC1 L-22	9/20	William See	1	N	St Marys / 1800	St Marys / 0900	
O-181 SEC1 L-26	9/20	Pete Walker	1	N	Apgar TP/ 1800	Apgar TP / 0900	
O- 205 SEC 1 L-27	9/20	Rick Blair	1	N	Logan / 0600	ICP / 1800	
O- 192 SEC 1 L-28	9/20	James Purcell	1	N	LML / 1800	LML / 0900	
O- 194 SEC 1 L-29	9/20	Nathen Snyder	1	N	ICP / 1800	ICP / 0900	
O- 180 SEC 1 L-30	9/21	Justin Repine	1	N	ICP / 0600	ICP / 2100	
O- 212 SEC 1 L-31	9/21	Cody Harwood	1	N	LML / 1800	LML / 0600	
7. Control Operations							
Tasks:							
<ul style="list-style-type: none"> ➤ Continue to provide for public safety and ensure visitor compliance with off limits areas affected by wildfire in GNP. ➤ Coordinate safe passage for fire team members and construction crews working in closure areas. 							
Purpose: To ensure a safe and secure working environment for members of the fire team.							
End State: To provide security coverage to closure areas designated by the fire management team and the park until they are deemed safe for the public.							
8. Special Instructions							
<ul style="list-style-type: none"> ➤ Report any security or law enforcement issues affecting the fire team to fire/security management or uniformed LEOs on the team. ➤ For any incidents involving public visitors, LE or EMS, contact Sprague Communications on Command channel 8. 							
9. Communications							
Function	Frequency - RX	Frequency - TX	Tone	Channel	Comments		
Command (primary)	170.4125	165.9625	TX / 114.8	8			
Command	170.0125	165.2500	TX / 114.8	7			
Command							
Tactical	166.9750	166.9750	173.8	5			
Air to Ground	168.0125	168.0125		13			
Prepared by (RESL)	Approved by (PSC)		Date		Time		
Marla Rodgers 	Mike Davin 		09/10/2017		2000		

INCIDENT RADIO COMMUNICATIONS PLAN I-205		1. INCIDENT NAME	2. DATE/TIME PREPARED	3. OPERATIONAL PERIOD DATE/TIME	
		Sprague/Adair Peak/Elder Crk	09/10/2017 1700	09/11/2017 0700-2100 Day Shift 09/11-12/2017 1800-1000 Night Shift	

4. BASIC RADIO CHANNEL UTILIZATION											
Ch #	Function	Channel Name	Assignment	RX Freq	N/W	RX Tone/NAC	TX Freq	N/W	TX Tone/NAC	Mode Analog (A) Digital (D) Mixed (M)	Remarks
1	TAC	TAC 1	DIV M	168.0500	N	114.8	168.0500	N	114.8	A	DIV M TAC
2	TAC	TAC 2	DIV W	168.2000	N	114.8	168.2000	N	114.8	A	DIV W TAC
3	TAC	TAC 3	I/A GRP	168.6000	N	114.8	168.6000	N	114.8	A	I/A DIV/ NIGHTS DIV TAC
4	TAC	TAC 4	STR PROT	166.7250	N	114.8	166.7250	N	114.8	A	STRUCTURE TAC
5	TAC	GNP TAC	LEO EVAC	166.9750	N	173.8	166.9750	N	173.8	A	LEO / EVAC TAC/ADAIR PK/ELDER CRK
6	TAC	MAROON	MULT AID	154.2800	N		154.2800	N	156.7	A	MUT AID / STRUCTURE
7	COMMAND	CMD 7	COMMAND	170.0125	N		165.2500	N	114.8	A	Command Repeater for Adair/Sprague/Elder
8	COMMAND	CMD 8	COMMAND	170.4125	N		165.9625	N	114.8	A	Command Repeater for Sprague/Adair/Elder
9	KIC RPTR	SCALPLOC	USFS RPTR	164.3750	N		165.2625	N	103.5	A	I/A Middle Fork
10	KIC RPTR	DESERT	USFS RPTR	164.3750	N		165.2625	N	107.2	A	KIC Forest Repeater
11	GNP RPTR	GLACIER1	GNP RPTR	166.3750	N		167.0250	N	156.7	M	I/A Glacier Park Repeater
12	GNP RPTR	GLACIER2	GNP RPTR	162.1625	N		167.0250	N	156.7	M	I/A Glacier Park Repeater
13	SPRAGUE A/G	SPRG A/G	AIR TO GROUND	168.0125	N		168.0125	N		A	Sprague/Adair Peak A/G
14	FLATHD A/G	FLT A/G	AIR TO GROUND	169.1250	N		169.1250	N		A	Flathead NF A/G
15	AIR MEDICAL	TAN	AIR MED	155.3400	N		155.3400	N		A	AIR MEDICAL/LIFE FLIGHT A/G
16	AIR GUARD	AIRGUARD	AIR EMERGENCY	168.6250	N		168.6250	N	110.9	A	AIR EMERGENCY

5. Special Instructions:	
6. I-205 Prepared By: Communications Unit Leader	Name: TODD ORR
	Signature: 

1. INCIDENT NAME: Sprague, Adair Peak, Elder Ck.	2. OPS PERIOD DATE: 9/11/2017	START TIME: 08:00	END TIME: 20:00	SUNRISE: 07:07 OFFICIAL	SUNSET: 19:56 OFFICIAL
--	---	-----------------------------	---------------------------	--------------------------------------	-------------------------------------

3. Risk Assessment Mitigations, Special Instructions, and Remarks:
 Do appropriate level of risk management for all assigned missions—Assess mission complexity and the benefit/risk of the mission. *Be aware of gusty winds & potential increased fire behavior.*
Prior to flights north of Polebridge, notification must be made to Kalispell Dispatch for U.S. / Canada border airspace clearance. Squawk 1255
KNE/FNF Late Season Operations: Tactical Aviation Ops from Aug. 15 to end of season shall be conducted only from official sunrise to official sunset.
Aquatic Invasive Prevention: Know the Protocols! High Pressure/Hot Water Rinse for AIS treatment. decontamination locations at Kalispell (S27), Libby (S59), and Hungry Horse Helibase.
Private Aircraft operating out of the privately owned airstrip (KOA), make sure all pilots are monitoring Unicom frequency 122.9, ensure notification from ground to air on any known aircraft in area.

6.PERSONNEL	NAME	PHONE #	7. FREQUENCIES	type	Freq.	8. FIXED-WING Avail/ Type/ Make-Model/ N#/ Base
GNP FMO	Dave Soleim	406-471-0182	Sprague/Adair/Elder Air/Air	AM	126.8250	AIRTANKERS- Order as needed through Dispatch
Kalispell Dispatch - Aircraft Desk		406-758-5306	Sprague/Adair/Elder A/G	FM	168.0125	LEAD PLANES- Order as needed through Dispatch
ASGS	Steve Croy	540-230-2568	DECK - KOA HB	FM	163.1000	ATGS AIRCRAFT- Order as needed through Dispatch 4QS at Libby AP (S59) 9AK at Kalispell AP (GPI)
HEB2 (KOA)	Brandon Spencer	406-861-5298	FNF IA Air/Air	AM	127.0250	DETECTION- Order as needed through Dispatch 29X or 7DL (KIC) ORDER 91M (DNRC)
5AE (HMGB)	Cammy Roy	907-750-6620	FNF Primary IA A/G	FM	169.1250	SEATs- will be ordered as needed through Dispatch
577 (HMGB)	Joe Names	928-965-2152	KIC IA A/G 2	FM	166.9000	
Water Tender	Bad Rock (E-23)		DNRC Yellow A/G	FM	151.2200	
			Life Flight A/G TAN	FM	155.340	
			Air Guard	FM	168.625 TT 110.9 TX	
Zone FAO	Deborah Lampton	406-291-2848	National Fit Follow	FM	168.650 TT 110.9 TX	
DNRC	Jesse Best	406-212-4822				
Hungry Horse Helibase (direct)		406-387-3864				
HEB2 (Hungry Hrs)	Lynn Emerick	406-291-2847	FNF Direct (KIC)	FM	164.3750 TT 110.9 TX	KIC (Kalispell Dispatch): 406-758-5260

9. HELICOPTERS (Assigned at KOA or Borrowed from Hungry Horse)

FAA N#	TY	MAKE/ MODEL	BASE	Start	REMARKS	FAA N#	T Y	MAKE/ MODEL	BASE	Start	REMARKS
5AE	3	AS 350	KOA	08:30	Recon / Pax / Sling / Bucket	4QS	1	AC-500	S59 Libby	08:30	ATGS Alan Osborn
577	2	UH-1H	KOA	08:30	Sling / Bucket	9AK	1	AC-500	GPI Kalispell	08:30	ATGS Gordon Amundson
9a. Helicopters Shared/Borrowed from nearest neighboring Helibase:											
414	1	Kmax	Hungry Horse	08:30	Bucket Work - request if needed	BD-151		AC-690B	GPI Kalispell	08:30	Aerial supervision - scoopers
2D	2	UH-1H	Hungry Horse	08:30	Bucket Work - request if needed	S-270		CL-415	GPI Kalispell	08:30	Scooper
6PJ	3	Bell 407	Hungry Horse	08:30	IA - Request as needed	S-273		CL-415	GPI Kalispell	08:30	Scooper

4. READY ALERT A/C:
5AE w/ litter kit

MEDIVAC- Order thru Kalispell Dispatch (KIC)

5. TFR: No TFR in place
UNICOM: 122.9000

9b. Fixed-Wing/Shared/Borrowed Aircraft

Sprague Fire/Adair Peak/Elder Creek

Phone List

Incident Commander:	(406) 387-9087
Operations:	(406) 387-9088
Air:	(406) 387-9088
Safety:	(406) 387-9080
PIO:	(406) 387-9092
Plans:	(406) 387-9082
Demob:	(406) 387-9081
Finance:	(406) 387-9091
Logistics:	(406) 387-9083
Supply:	(406) 387-9078
Ordering:	(406) 387-9079
Communications:	(406) 387-9086
Medical:	(406) 387-9084
Ground Support:	(406) 387-9085
Lake McDonald:	(406) 888-5424
Maintenance Shop	
Fax:	(406) 387-9082



SAFETY MESSAGE

Together we build the Safety Culture



Question Yourself

You have the responsibility to forecast the outcome of all our actions.

Think Safety

- What makes you safe?
- What personnel values are important to you?
- What does home mean to you?
- Who is important to you?
- What does trust mean to you?
- What causes you to speak up?
- Under what circumstances could a bad thing happen to you?
- How does recognizing our limitations improve our performance?
- What parts of our culture place us in the greatest danger?

1. Incident/Project Name		2. Operational Period						
SPRAGUE FIRE/ ADAIR FIRE/ ELDER CREEK FIRE		Date/Time September 11, 2017 Day Shift 0700-2100 Night Shift 1800-1000						
3. Ambulance Services								
Name	Complete Address	Phone & EMS Frequency		Advanced Life Support (ALS)				
				Yes	No			
Three Rivers Ambulance	31 7 th ST W Columbia Falls, MT	406-892-4244		X				
Whitefish Fire Dept	275 Flathead Ave Whitefish, MT	406-863-2483		X				
4. Air Ambulance Services								
Name	Phone	Type of Aircraft & Capability						
ALERT AIR AMBULANCE		Paramedics, flight nurse, Night Vision, Talk on A/G Tan Channel # 15.						
MERCY FLIGHT		Fixed wing and Rotary wing. Paramedic and flight nurse. Night vision. Talk on A/G Tan Channel # 15.						
TWO BEAR AIR (Hoist Ship)		Rotary wing. Rescue and hoist, Night Vision. Paramedic on board. Will extract & deliver to an ambulance for transport. Talk on A/G Tan Channel # 15.						
5. Hospitals								
Name Complete Address	GPS Datum - WGS 84 Coordinate Standard Degrees Decimal Minutes N - Lat DD° MM.MMM' W - Long DD° MM.MMM'		Travel Time		Phone	Helipad		Level of Care Facility
	Lat:	Long:	Air	Ground		Yes	No	
Kalispell Regional Medical Center 32 Sunnyview Lane Kalispell, MT 59901	Lat:	N 48° 12.798'	15 min	75 min	406-752-5111 Fax: 406-756-4717	<input checked="" type="checkbox"/>	<input type="checkbox"/>	Level 3
	Long:	W 114° 19.440'						
	VHF:	155.3400 Tan Channel						
North Valley Hospital 1600 Hospital Way Whitefish MT 59937	Lat:	N 48° 12.82	N/A	60 min	406-863-3500	<input checked="" type="checkbox"/>	<input type="checkbox"/>	Critical Access
	Long:	W 114° 19.36						
	VHF:	155.3400 Tan Channel						
Harbor View Medical Center 325 9 th Ave. Seattle WA. 98104	Lat:	N 47° 36.180'	2.5 hrs.	8 hrs.	206-744-3000 Fax: 206-744-2655	<input checked="" type="checkbox"/>	<input type="checkbox"/>	Level 1
	Long:	W 122° 19.493'						
	VHF:	155.3400 Tan Channel						
Benefis 1101 26 th S Great Falls, MT 59405	LAT:	N 47° 29.509'	65 min	N/A	406-455-5000	<input checked="" type="checkbox"/>	<input type="checkbox"/>	Level 2
	Long:	W 111° 15.590'						
	VHF:	155.3400 Tan Channel						
6. Division							Area, Location, Capability	
DIVISION M	EMS Responders & Capabilities:		C. Dave Kresge, EMT-F					
	Equipment Available on Scene:		BLS Kit, TRS					
	Channel:		Command 7 and TAC 1					
	ETA for Ambulance to Scene:							
	Air:		30 min					
	Ground:		45 min					
	Approved Helispots:		n/a					

Division	Area, Location, Capability	
STRUCTURE PROTECTION	EMS Responders & Capabilities:	Blaine Larsen, EMP-F
	Equipment Available on Scene:	ALS Kit, SKED, AED
	Medical Emergency Channel:	Command 7 and TAC 4
	ETA for Ambulance to Scene:	
	Air:	15 min
	Ground:	45 min
	Approved Helispot:	n/a
	Lat:	
Long:		

6. Division	Area, Location, Capability	
DIV W	EMS Responders & Capability	None Assigned at this time.
	Equipment Available on Scene:	.
	Medical Emergency Channel:	Command 7 and TAC 2
	ETA for Ambulance to Scene:	
	Air:	30 min
	Ground:	n/a
	Approved Helispots:	
	Sperry Chalet:	N 48° 36.353' X W 113°47.160' (H2)
Fish Lake:	N 48° 36.094' X W 113° 49.964' (H3)	

7. Division	Area, Location, Capability	
ADAIR FIRE	EMS Responders & Capability	None Assigned at this time.
	Equipment Available on Scene:	.
	Medical Emergency Channel:	Command 8 and TAC 5
	ETA for Ambulance to Scene:	
	Air:	30 min
	Ground:	
	Approved Helispots:	

8. Division	Area, Location, Capability	
ELDER CREEK FIRE	EMS Responders & Capability	None Assigned at this time.
	Equipment Available on Scene:	.
	Medical Emergency Channel:	COMMAND 8 and TAC 5
	ETA for Ambulance to Scene:	
	Air:	30 min
	Ground:	
	Approved Helispots:	
Wurtz Cabin:	N 48° 53.93 W 114° 23.314	
Moose City Airstrip:	N 48° 59.753 W 114° 28.400	

9. ICP - CAMP	Incident Command Post (KOA West Glacier, MT)		
ICP	Point of Contact:	Linda Barbee	
	EMS Responders & Capability:	Linda Barbee, AEMT	
	Equipment Available on Scene:	BLS Kit, AED, TRS	
	Medical Emergency Channel:	Command 8	
	ETA for Ambulance to Scene:	Estimate 25 minutes. (Three River Ambulance)	
	Air:	20 min	
	Ground:	30 min	
Approved Helispot:	N 48° 27.756 x W 113° 59.470' (KOA Helibase)		

10. Prepared By (Medical Unit Leader)	11. Date/Time	12. Reviewed By (Safety Officer)	13. Date/Time
Linda Barbee MEDL	09/10/17 1900 hrs.	Kevin Boness, SOF2 <i>Kevin Boness</i>	09/10/17 1900 hrs.

Sprague Fire/ Adair Peak Fire/Elder Creek

Incident within an Incident Medical Emergency Action Plan

- The closest ranking Leader at the accident scene will **take charge** and be the Point of Contact (POC).
- Emergency Medical personnel assigned to the Division will respond to accident scene.
- Use the 9 line tear out sheet in the IAP or pg. 108 in IRPG to assess patient. Use Command Channel 8 or Command 7 to call communications to report the incident and request transport.
- IA group will use appropriate repeater to notify Sprague Communications of an Incident.
- Communications will clear command channel as needed for the emergency and make the arrangement for patient transport as required.
- For Medical Incidents within Glacier NP Sprague Communications will notify and request Emergency Medical Services through Glacier Dispatch.
- Upon notification of a serious accident, the Incident Commander, all Command and General staff and the Medical Unit Leader will report to ICP Communications to monitor the IWI.
- Incident Radio traffic will be monitored and documented at the ICP.

Approved by: /S/ Diane Hutton Incident Commander

Date: 09/11/2017

Bear Encounter Etiquette

Bears typically do their best to avoid people and are good at detecting your presence. However, it is possible to surprise bears along the trail. Bears, especially grizzly bears, don't like surprises, and a surprise encounter could lead to an attack.

The best way to avoid bear encounters is to be alert and clap and shout when you can't see the trail ahead. If you do encounter a bear:

If the bear is unaware of your presence, quietly go back the way you came, but keep an eye on the bear in case it's also moving.

If the bear notices you and moves away, wait before continuing on and avoid moving in the same direction as the bear.

If the bear notices you and stands up trying to identify you, stand still, move your arms, and talk calmly. Try to increase your distance from the bear without agitating it.

If the bear moves towards you, walking or running, stand your ground. Speak in a calm voice and give the bear time to determine that you are not a threat. Prepare to use your bear spray.

If an attack or physical contact is imminent, use your bear spray. Failing that, lay down on your stomach with your fingers interlaced behind your neck and your arms protecting your head. Remain still and silent until the bear calms down and moves away. Do not try to run, fight back, or yell. If you are wearing a backpack, keep it on for additional protection. Do not stand up to leave the area until you're sure the bear has moved away. Most victims of bear attacks suffer only minor injuries. Bears attack in response to what they perceive as a threat. The attack should cease once they determine that you are not a threat. If an attack is prolonged, or if the bear starts to eat you, it is no longer defensive. In these exceedingly rare cases, you must fight back however you can.

SPRAGUE, ADAIR PEAK AND ELDER CREEK FIRES

TALKING POINTS

September 11, 2017

As the Sprague, Adair Peak, and Elder Creek Fires continue to progress, they are expected to vary in intensity, spread and duration with fire activity, fuels, and weather.

- The fires are located in steep, rugged, and difficult to access terrain.
- Portions of the fires are expected to burn until they are extinguished naturally by significant rain or snow.
- The lightning-ignited Sprague Fire started on August 10, 2017. Lightning-ignited Adair Peak Fire on August 12, 2017 and the human caused Elder Creek Fire started on September 2, 2017

Fire managers are protecting values at risk where they can do so safely and effectively.

- On the **Sprague Fire** this includes the Sperry Chalet Complex, Lake McDonald development area, Crystal Ford Bridge, North Lake McDonald structures, the Going to The Sun Road Corridor, Harrison Lake Cabin, Sprague Creek Campground and Avalanche Creek Area; on the **Adair Peak Fire** it includes the Upper and Lower Logging Lake Cabins, Logging Lake Ranger Station and Campground; on the **Elder Creek Fire** it includes private lands and structures west of the park boundary, Kishenehn Cabins, Kintla Ranger Station and Campground and Upper Kintla Patrol Cabin.
- Firefighter and public safety are always the highest priority.

Should the fire reach Management Action Points that trigger evacuation considerations, please use the park's terminology that has been used during past fires and locals are familiar with.

- **Evacuation Warning** = current or projected threats from hazards associated with the Sprague Fire are severe enough to indicate a good probability of the need to evacuate. (*Otherwise known as "Set"*)
- **Evacuation Order** = an order to leave now. **AN EVACUATION ORDER WAS ISSUED FOR THE SOUTH END OF LAKE MCDONALD NORTH TO LOGAN PASS. THIS INCLUDES THE NORTH MCDONALD ROAD.** (*Otherwise known as "Go"*)

Inciweb (<https://inciweb.nwcg.gov>) is the best source of fire information. Other sources for fire info:

- Fire Info Phone (406) 387-9092 (staffed 8 am to 8 pm; after-hours fire info recording):
- Facebook: <https://www.facebook.com/GlacierNPS> Twitter: <https://twitter.com/GlacierNPS>
- Fire info boards at locations including Camas, Apgar and West Glacier
- Park Visitor Centers, Park website: <https://nps.gov/glac>.

Pause Before You Post

Per Glacier National Park's policy, before any photos taken within closed areas that are posted to personal social media sites must be publically available on Inciweb, the park website or Glacier National Park's social media accounts.

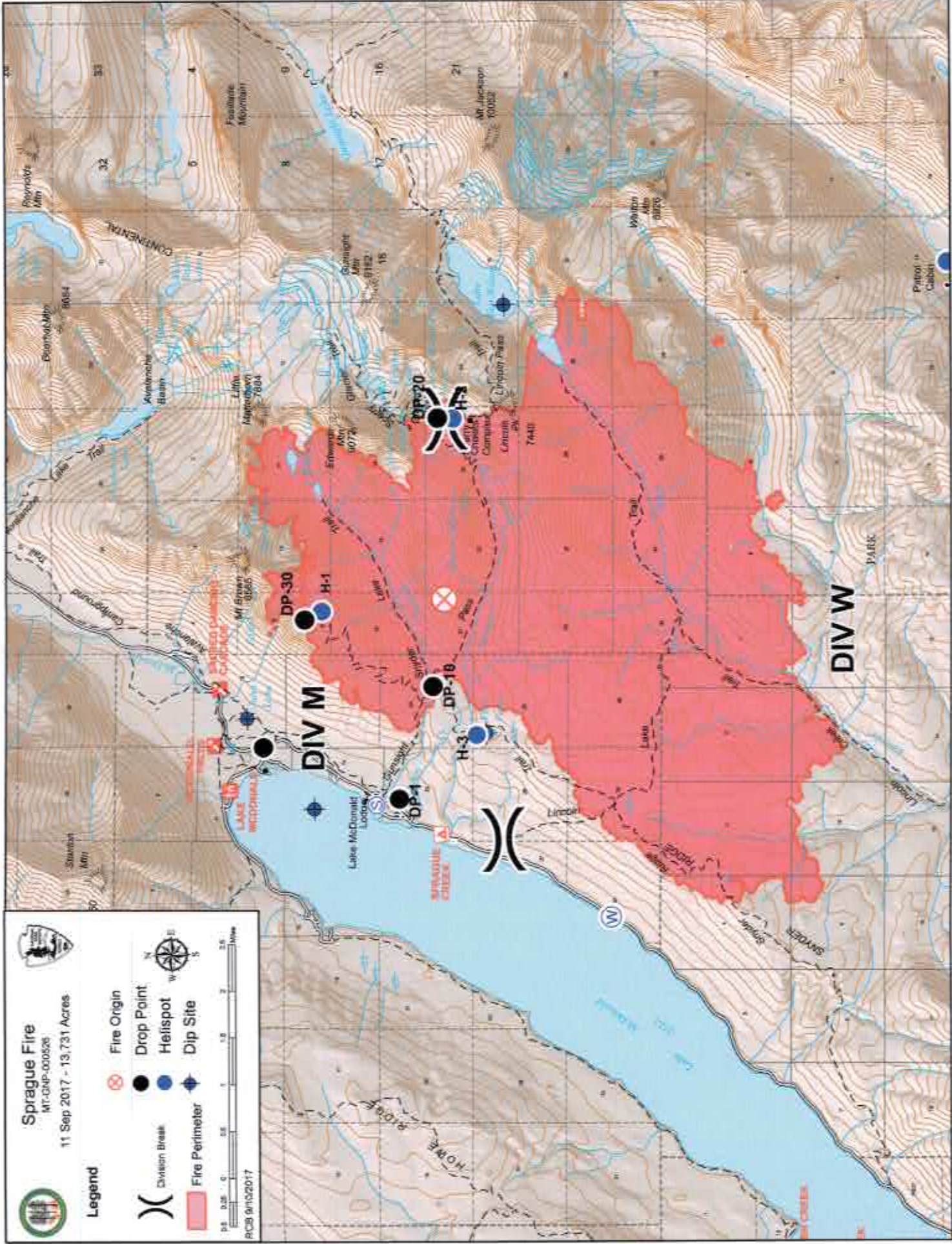
Don't Post

- fireline personnel not wearing full PPE
- identifiable structures (ie. addresses) or burning/burned structures
- faces of children (NPS requires a signed release form)
- accident or investigation scenes
- sensitive natural or cultural resources or QR codes to maps that identify these locations
- whiteboards / flipcharts with passwords or internal contacts listed



Division Supply Order SPRAGUE / ADAIR PEAK

Order Number:		Date -		Division -	
Order taken in Communications by:				RADO or COML confirmation:	
DIVS Supervisor:				Date & Time Needed:	
Delivery Contact:				Delivery Location:	
Cell Phone #:				UTM	
Radio Channel Number:				Lat: Long:	
Mode of Delivery (Circle Means):		Ground Support		DP/LZ:	
Division will pick up:		Deliver to Helibase		Other:	
SPUL Confirmation can be filled as needed (Circle): Yes or No - Requiring at least 24 hours to fill.					
Item	Description:	Quantity	Comments		
Hose Lay Kit, 1000 Feet = (10) 1 1/2" Hose; and 5 Each of: 1" Hose, 1 1/2" Wyes, 1 1/2" to 1" Reducers, and 1" Forester Nozzles					
1		1000 Feet	4	4000 Feet	
2		2000 Feet	5	5000 Feet	
3		3000 Feet	6	6000 Feet	
Garden Hose Kit, 500 Feet = (10) 3/4" Hose, and (5 Each): 3/4" Wye, 3/4" Shutoff, 3/4" Nozzle, 1" Wye, and 1" to 3/4" Reducers)					
7		500 Feet	10	3000 Feet	
8		1000 Feet	11	4000 Feet	
9		2000 Feet	12	5000 Feet	
Water Handling Equipment:			Item #	Description	Quantity
13	Hose: 1 1/2" (100')	LG		Line Tools:	
14	1" (100')	LG	40	Pulaski	EA
15	3/4" (50' Toy/Garden)	LG	41	Combi	EA
16	Gated Wye: 1 1/2"	EA	42	McCloud	EA
17	1"	EA	43	Shovel	EA
18	3/4"	EA	44	Water: Cubies	EA
19	Reducer: 1 1/2" X 1"	EA	45	Bottled	CS
20	1" X 3/4"	EA	46	Gatorade	CS
21	Nozzle: 1" Forester	EA	47	MRE's	BX
22	1" Mystery (KK)	EA	48	Flagging: Lime Green	RO
23	1 1/2" Red Barrel	EA	49	Pink	RO
24	3/4" Brass		50	Orange	RO
25	Shutoff Values: 3/4"	EA	51	Killer Tree	RO
26	Pumpkin or Porta-Tank, 1800 gal.	EA	52	Wrap, Structural	RO
27	Blivets, Slingable 55 Gal	EA	53	Other:	
28	Mopup Kits 3 Person	EA	54	* NFES 8653 w/tripod	
29	Backpack Pumps	EA	55	* NFES 1048 out of Gac	
30	Sprinkler Kits (* see Note)	EA	56		
31	Foam (5 GALS)	PL	57		
32	Mark III Kits	KT	58		
33	Drip Torch	EA	59		
34	Fusees (72/Case)	CS	60		
35	Chainsaw Kit	KT	61	Bar Oil	Gal
36	Fuel, 5 gallons:	Gas	Can	Diesel, 5 gallon	Can
37	Mark III (20:1)		Can	63	QT
38	Chainsaw (50:1)	Mixed	Can	64	BT
				65	BT
39	Drip Torch (3:2)		Can		



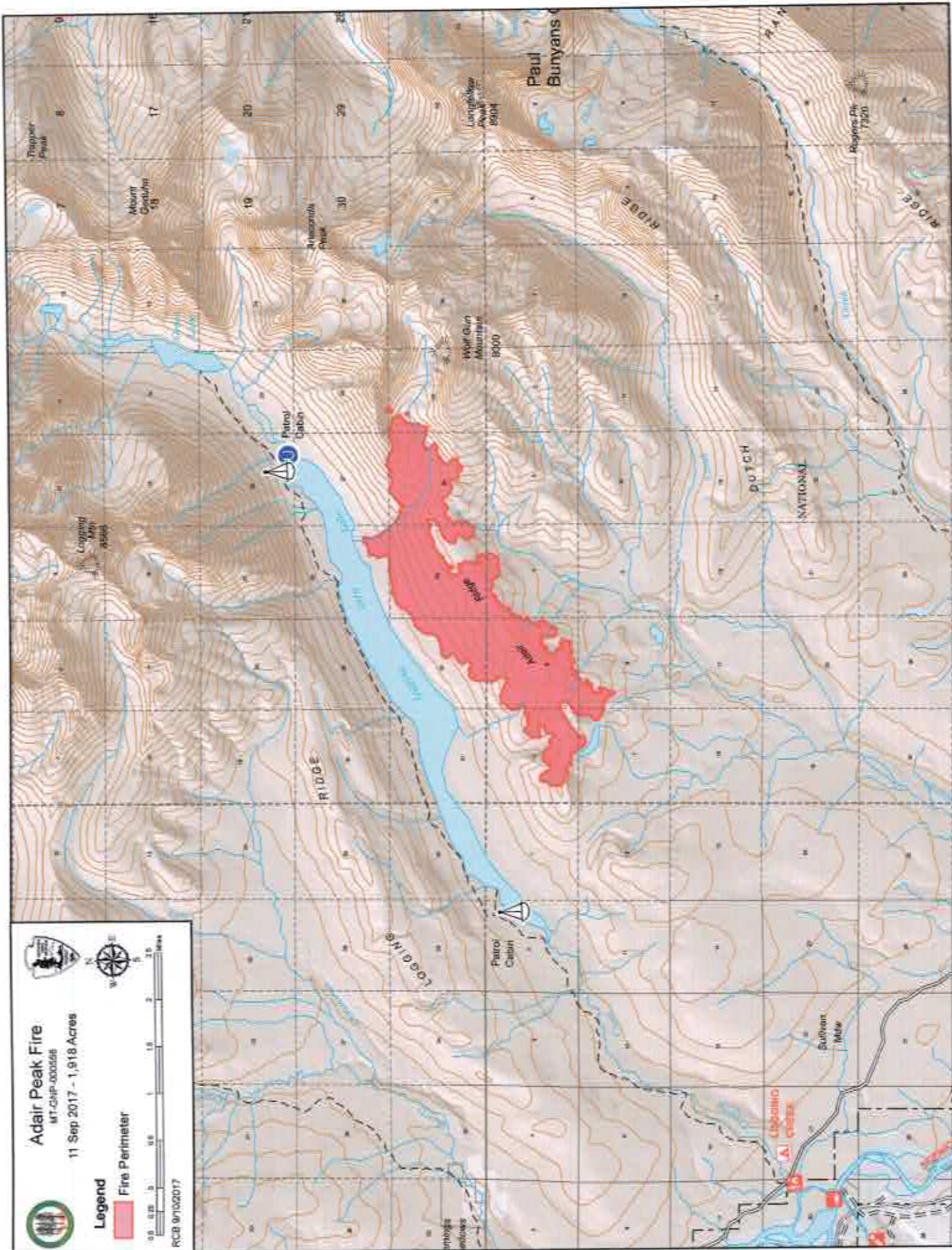
Sprague Fire
 MT-DP-000526
 11 Sep 2017 - 13,731 Acres

Legend

- Fire Origin
- Drop Point
- Helispot
- Dip Site
- Division Break
- Fire Perimeter

Scale: 0 0.5 1 1.5 2 2.5 Miles

PCB 9/13/2017



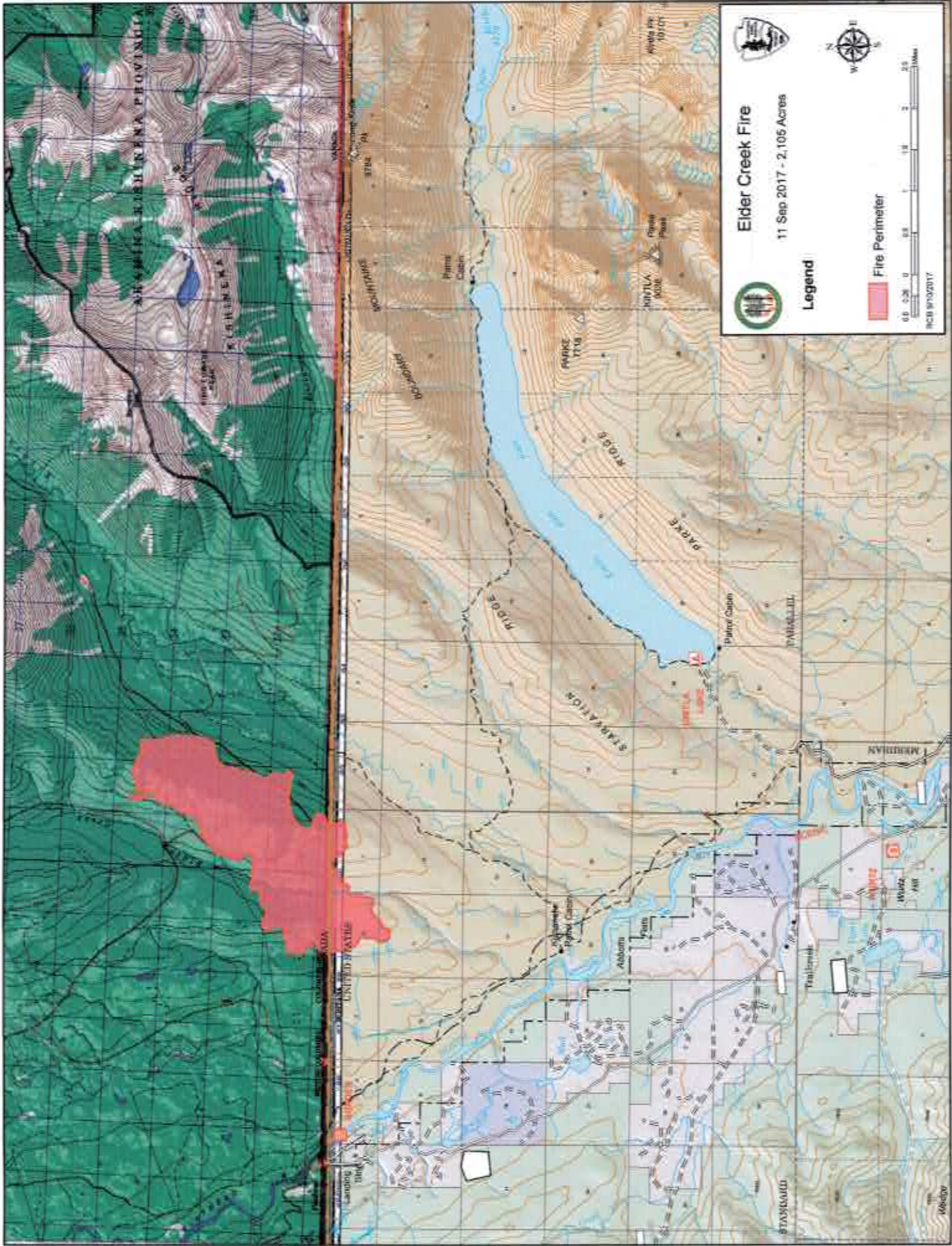
Adair Peak Fire
MT-CMP-00056
11 Sep 2017 - 1,918 Acres

Legend

 Fire Perimeter



RCB 9/10/2017



Elders Creek Fire
11 Sep 2017 - 2,105 Acres



Legend

Fire Perimeter



BCN PROV017

Medical Incident Report

FOR ALL MEDICAL EMERGENCIES: IDENTIFY ON SCENE INCIDENT COMMANDER BY NAME AND POSITION AND ANNOUNCE "MEDICAL EMERGENCY" TO INITIATE RESPONSE FROM IMT COMMUNICATIONS/DISPATCH.

Use items one through nine to communicate situation to communications/dispatch.

1. CONTACT COMMUNICATIONS/DISPATCH

Ex: "Communications, Div. Alpha, Stand-by for Priority Medical Incident Report." (If life threatening request designated frequency be cleared for emergency traffic.)

2. INCIDENT STATUS: *Provide incident summary and command structure.*

Nature of Injury/Illness		<i>Describe the injury (Ex: Broken leg with bleeding)</i>
Incident Name		<i>Geographic Name + "Medical" (Ex: Trout Meadow Medical)</i>
Incident Commander		<i>Name of IC</i>
Patient Care		<i>Name of Care Provider (Ex: EMT Smith)</i>

3. INITIAL PATIENT ASSESSMENT: *Complete this section for each patient. This is only a brief, initial assessment. Provide additional patient info after completing this 9 Line Report.*

Number of Patients	Male / Female	Age	Weight
Conscious? <input type="checkbox"/> YES <input type="checkbox"/> NO = MEDEVAC!			
Breathing? <input type="checkbox"/> YES <input type="checkbox"/> NO = MEDEVAC!			
Mechanism of Injury: <i>What caused the injury?</i>			
Lat/Long (Datum WGS84) <i>Ex: N 40° 42.45' x W 123° 03.24'</i>			

4. SEVERITY OF EMERGENCY, TRANSPORT PRIORITY

SEVERITY	TRANSPORT PRIORITY
<input type="checkbox"/> URGENT-RED Life threatening injury or illness. <i>Ex: Unconscious, difficulty breathing, bleeding severely, 2° - 3° burns more than 4 palm sizes, heat stroke, disoriented.</i>	Ambulance or MEDEVAC helicopter. Evacuation need is IMMEDIATE .
<input type="checkbox"/> PRIORITY-YELLOW Serious Injury or illness. <i>Ex: Significant trauma, not able to walk, 2° - 3° burns not more than 1-2 palm sizes.</i>	Ambulance or consider air transport if at remote location. Evacuation may be DELAYED .
<input type="checkbox"/> ROUTINE-GREEN Not a life threatening injury or illness. <i>Ex: Sprains, strains, minor heat-related illness.</i>	Non-Emergency. Evacuation considered Routine of Convenience .

5. TRANSPORT PLAN:

Air Transport: (Agency Aircraft Preferred)

<input type="checkbox"/> Helispot	<input type="checkbox"/> Short-haul/Hoist	<input type="checkbox"/> Life Flight	<input type="checkbox"/> Other
-----------------------------------	---	--------------------------------------	--------------------------------

Ground Transport:

<input type="checkbox"/> Self-Extract	<input type="checkbox"/> Carry-Out	<input type="checkbox"/> Ambulance	<input type="checkbox"/> Other
---------------------------------------	------------------------------------	------------------------------------	--------------------------------

6. ADDITIONAL RESOURCE/EQUIPMENT NEEDS:

<input type="checkbox"/> Paramedic/EMT(s)	<input type="checkbox"/> Crew(s)	<input type="checkbox"/> SKED/Backboard/C-Collar
<input type="checkbox"/> Burn Sheet(s)	<input type="checkbox"/> Oxygen	<input type="checkbox"/> Trauma Bag
<input type="checkbox"/> Medication(s)	<input type="checkbox"/> IV/Fluid(s)	<input type="checkbox"/> Cardiac Monitor/AED
<input type="checkbox"/> Other (i.e. splints, rope rescue, wheeled litter)		

7. COMMUNICATIONS:

Function	Channel Name/Number	Receive (Rx)	Tone/NAC *	Transmit (Tx)	Tone/NAC *
<i>Ex: Command</i>	<i>Forest Rpt, Ch. 2</i>	<i>168.3250</i>	<i>110.9</i>	<i>171.4325</i>	<i>110.9</i>
COMMAND					
AIR-TO-GRND					
TACTICAL					

*(NAC for digital radio system)

8. EVACUATION LOCATION:

Lat/Long (Datum WGS84) <i>EX: N 40 42.45° x W 123 03.24°</i>	
Patient's ETA to Evacuation Location:	
Helispot/Extraction Size and Hazards:	

9. CONTINGENCY:

Considerations: <i>If primary options fail, what actions can be implemented in conjunction with primary evacuation method? Be thinking ahead...</i>	REMEMBER: Confirm ETA's of resources ordered Act according to your level of training Be Alert. Keep Calm. Think Clearly. Act Decisively.
--	--