

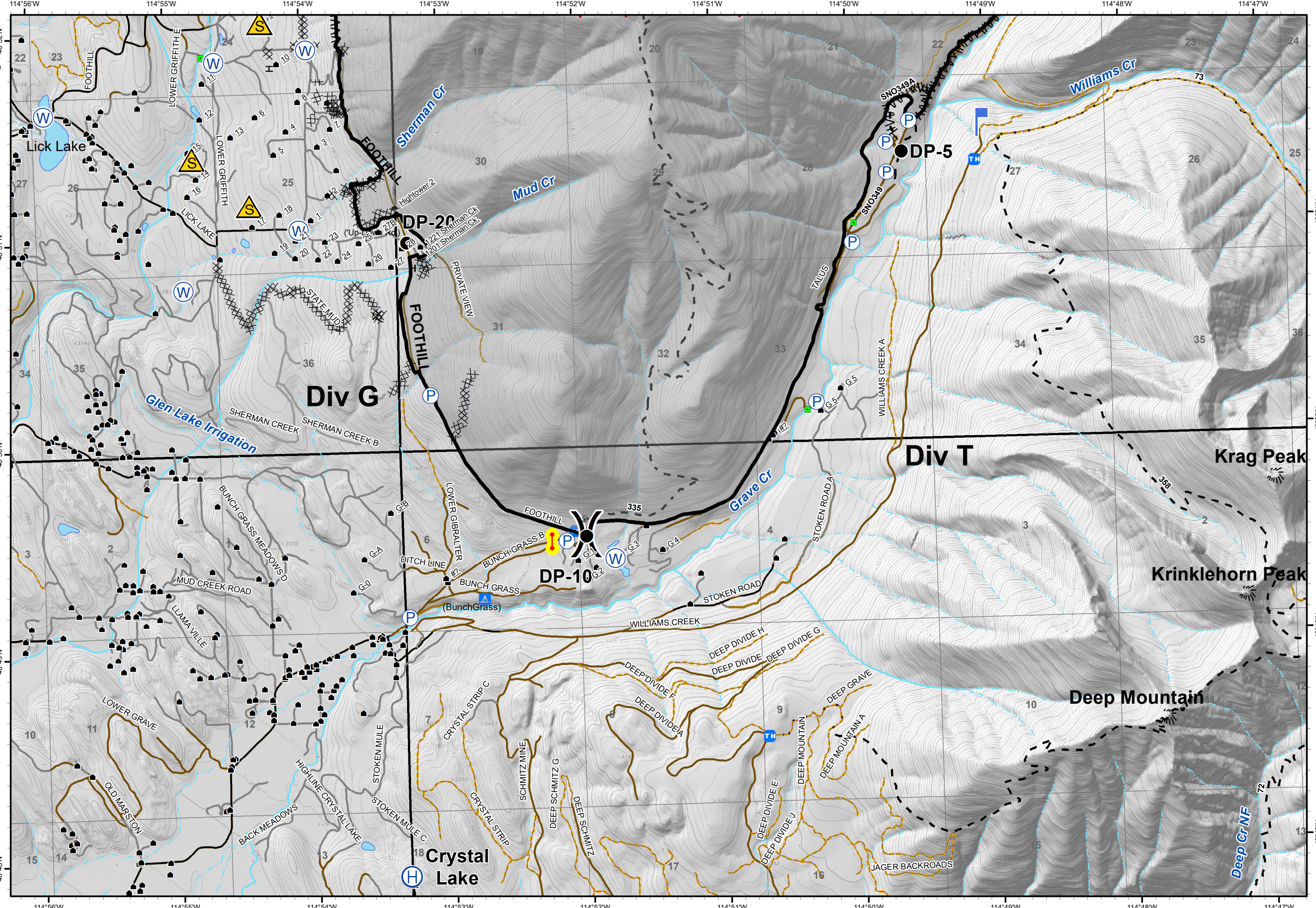
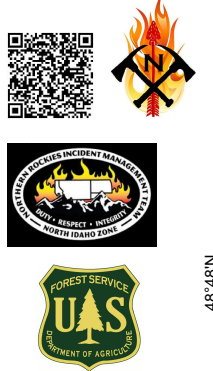
IAP

Gibraltar Ridge
MT-KNF-161
09/03/2017
Page 2 of 2
6,657 acres

- Checkpoint
- Developed Rec Sites**
- Campground
- Water Source
- Drop Point
- Helibase
- Lookout
- Pump
- Safety Zone
- Other
- Uncontrolled Fire Edge

- Completed Dozer Line
- Completed Line
- Hand Line
- Line Break Completed
- Structures
- Trailheads
- Roads**
- County
- Local, Private
- State Lands
- Forest Roads**
- Open
- Gated
- Barriered/Impossible
- Trails
- Peaks
- Major Stream
- Intermittent Stream

0 1,000 2,000 Feet



114°56'W 114°55'W 114°54'W 114°53'W 114°52'W 114°51'W 114°50'W 114°49'W 114°48'W 114°47'W