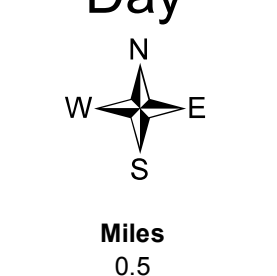


Deep Creek MT-LNF 005302 Operations Map

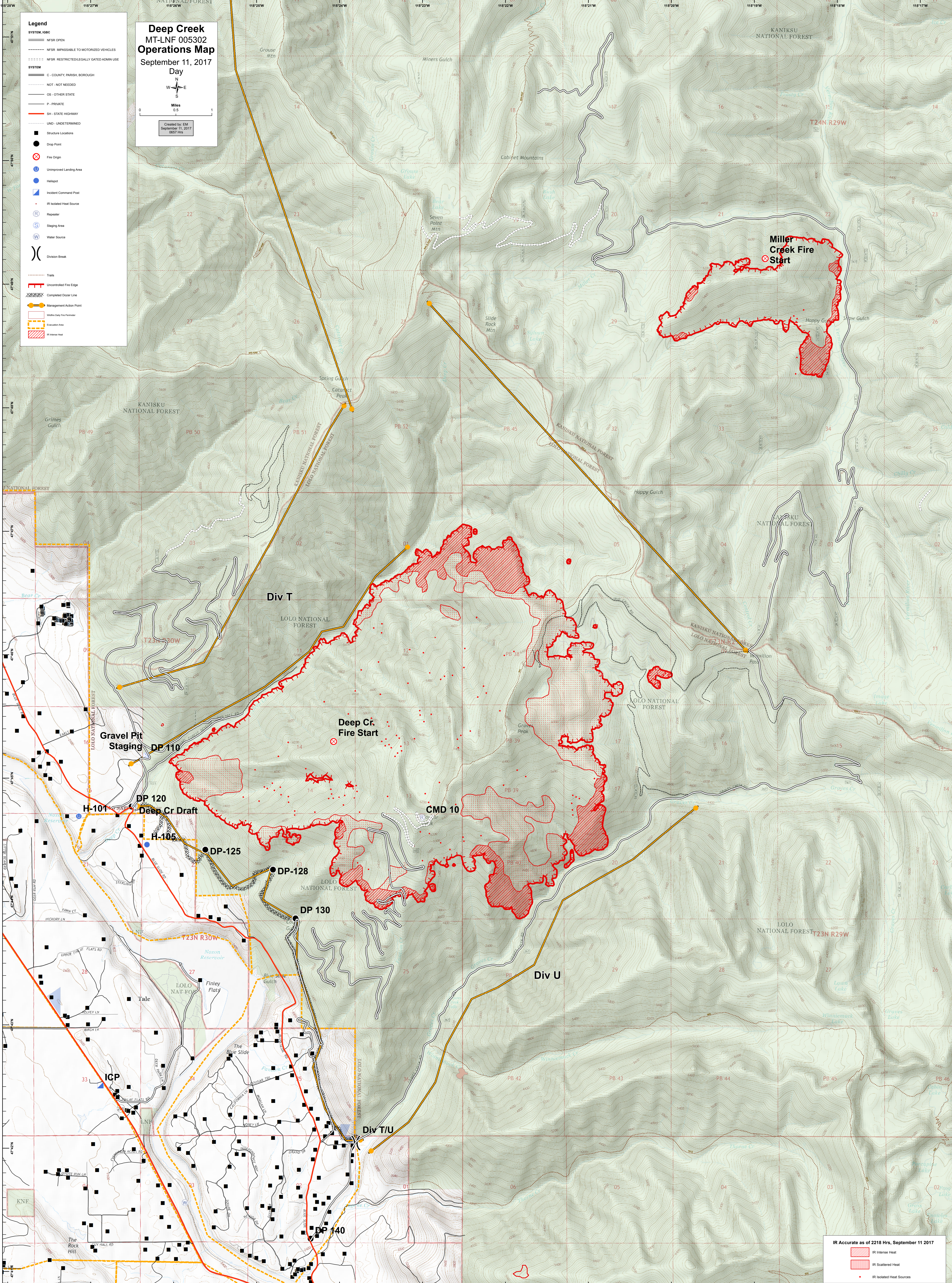
September 11, 2017
Day



Miles
0 0.5 1

Created by EM
September 11, 2017
0637 hrs

- Legend**
- SYSTEM, IORC
 - NFSR OPEN
 - NFSR IMPASSIBLE TO MOTORIZED VEHICLES
 - NFSR RESTRICTED/LEGALLY GATED ADMIN USE
 - SYSTEM
 - C - COUNTY, PARISH, BOROUGH
 - NOT - NOT NEEDED
 - OS - OTHER STATE
 - P - PRIVATE
 - SH - STATE HIGHWAY
 - UND - UNDETERMINED
 - Structure Locations
 - Drop Point
 - Fire Origin
 - Unimproved Landing Area
 - Helipoint
 - Incident Command Post
 - IR Isolated Heat Source
 - Repeater
 - Staging Area
 - Water Source
 - Division Break
 - Trails
 - Uncontrolled Fire Edge
 - Completed Dozer Line
 - Management Action Point
 - Water Only Fire Perimeter
 - Evaluation Area
 - IR Intense Heat



IR Accurate as of 2216 Hrs, September 11 2017

- IR Intense Heat
- IR Scattered Heat
- IR Isolated Heat Sources