

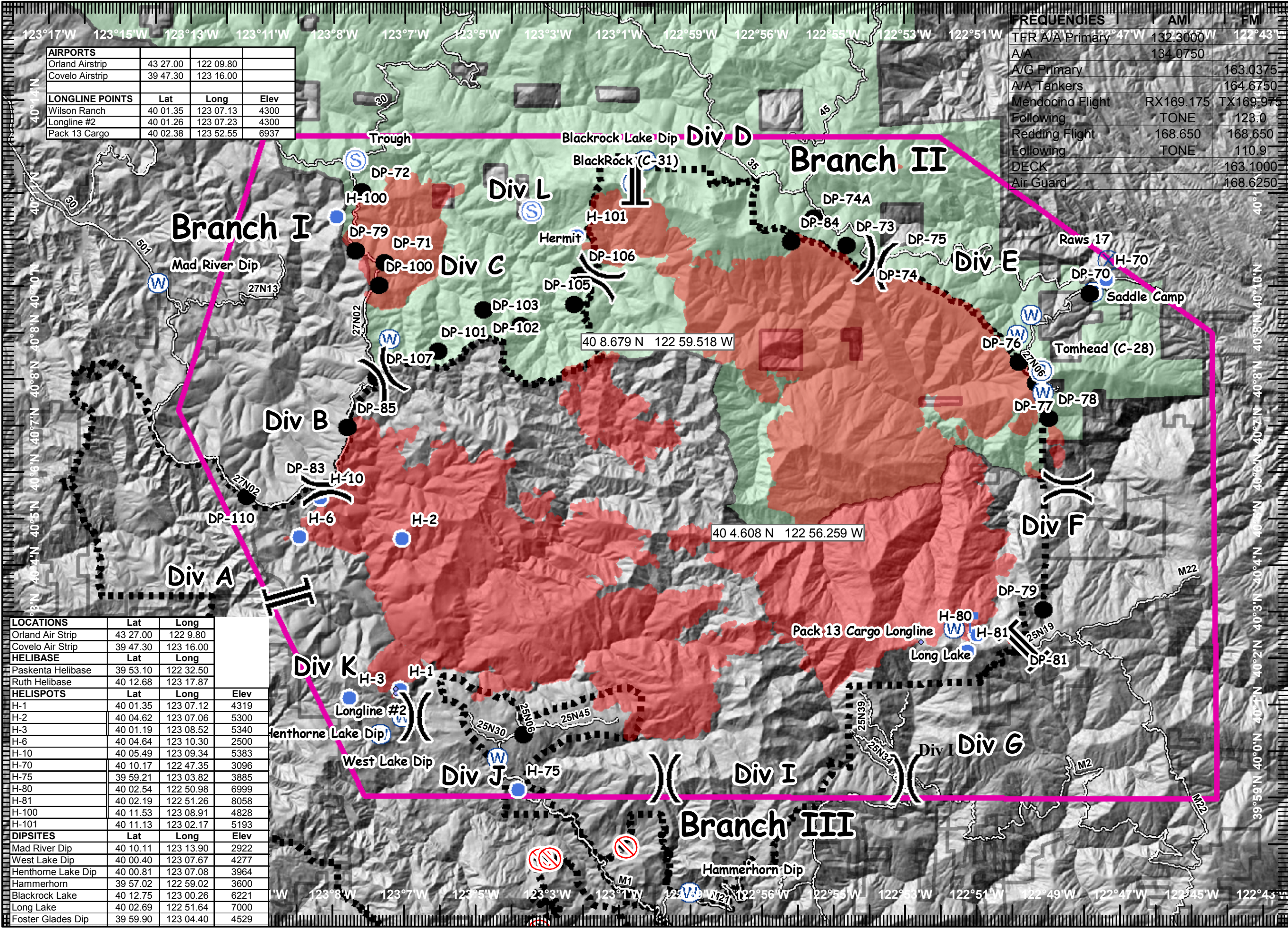
**Yolla Bolly**  
**CA-MNF-000663**  
**Pilot Map**  
**July 30, 2008, 0700**  
**NAD83z10n**

AIRPORTS			
Orland Airstrip	43 27.00	122 09.80	
Covelo Airstrip	39 47.30	123 16.00	
LONGLINE POINTS			
	Lat	Long	Elev
Wilson Ranch	40 01.35	123 07.13	4300
Longline #2	40 01.26	123 07.23	4300
Pack 13 Cargo	40 02.38	123 52.55	6937

FREQUENCIES	AM	FM
TFR A/A Primary	132.3000	122.43
A/A	134.0750	
A/G Primary		163.0375
A/A Tankers		164.6750
Mendocino Flight Following	RX169.175	TX169.975
Redding Flight Following	TONE	123.0
DECK	168.650	168.650
Air Guard	TONE	110.9
		163.1000
		168.6250

AIRCRAFT	
HELICOPTERS	
TYPE 1	TYPE 2
N9696W	N260TA
	N1206G
	N53SH
	404
FIXED WING	
Lead CFHWI	Scooper C-FLYL
N57RS ATGS Weniger	
N900DT ATGS Houston	
Ready Alert Aircraft	
N354LA I.A./Medivac	
73HJ I.A.	
SUNRISE	SUNSET
0609	2029
TFR: 8/ 9272	
Lat	Long
40 13' 15"	122 52' 00"
40 09' 00"	122 44' 25"
39 59' 00"	122 44' 16"
39 59' 05"	123 08' 07"
40 07' 21"	123 13' 19"
40 13' 15"	123 10' 55"
Ceiling	
12,000'	
In Effect	0600 to 2200

LOCATIONS			
Orland Air Strip	43 27.00	122 9.80	
Covelo Air Strip	39 47.30	123 16.00	
HELIBASE			
Paskenta Helibase	39 53.10	122 32.50	
Ruth Helibase	40 12.68	123 17.87	
HELISPOTS			
	Lat	Long	Elev
H-1	40 01.35	123 07.12	4319
H-2	40 04.62	123 07.06	5300
H-3	40 01.19	123 08.52	5340
H-6	40 04.64	123 10.30	2500
H-10	40 05.49	123 09.34	5383
H-70	40 10.17	122 47.35	3096
H-75	39 59.21	123 03.82	3885
H-80	40 02.54	122 50.98	6999
H-81	40 02.19	122 51.26	8058
H-100	40 11.53	123 08.91	4828
H-101	40 11.13	123 02.17	5193
DIPSITES			
Mad River Dip	40 10.11	123 13.90	2922
West Lake Dip	40 00.40	123 07.67	4277
Henthorne Lake Dip	40 00.81	123 07.08	3964
Hammerhorn	39 57.02	122 59.02	3600
Blackrock Lake	40 12.75	123 00.26	6221
Long Lake	40 02.69	122 51.64	7000
Foster Glades Dip	39 59.90	123 04.40	4529



**NO DIP**

Miles  
 0 1 2

July 29, 2008  
 2000 Hours