

Forest Air Operations Boundary Zones - 9/10/12

- Legend**
- TFR Boundary
 - Fire Perimeter
 - Bitterroot National Forest
 - Clearwater National Forest
 - Nez Perce National Forest
 - Payette National Forest
 - Salmon-Challis National Forest
- Stauffer 09 September 2012

Backcountry A/A 122.9

Hamilton Dispatch 406-363-7133

Saw tooth Fire TFR (2/8719) - BNF
11,000 Ft - A/A: 119.45

Grangeville Dispatch 208-983-6800

Porcupine & Salamander Fires
No TFR

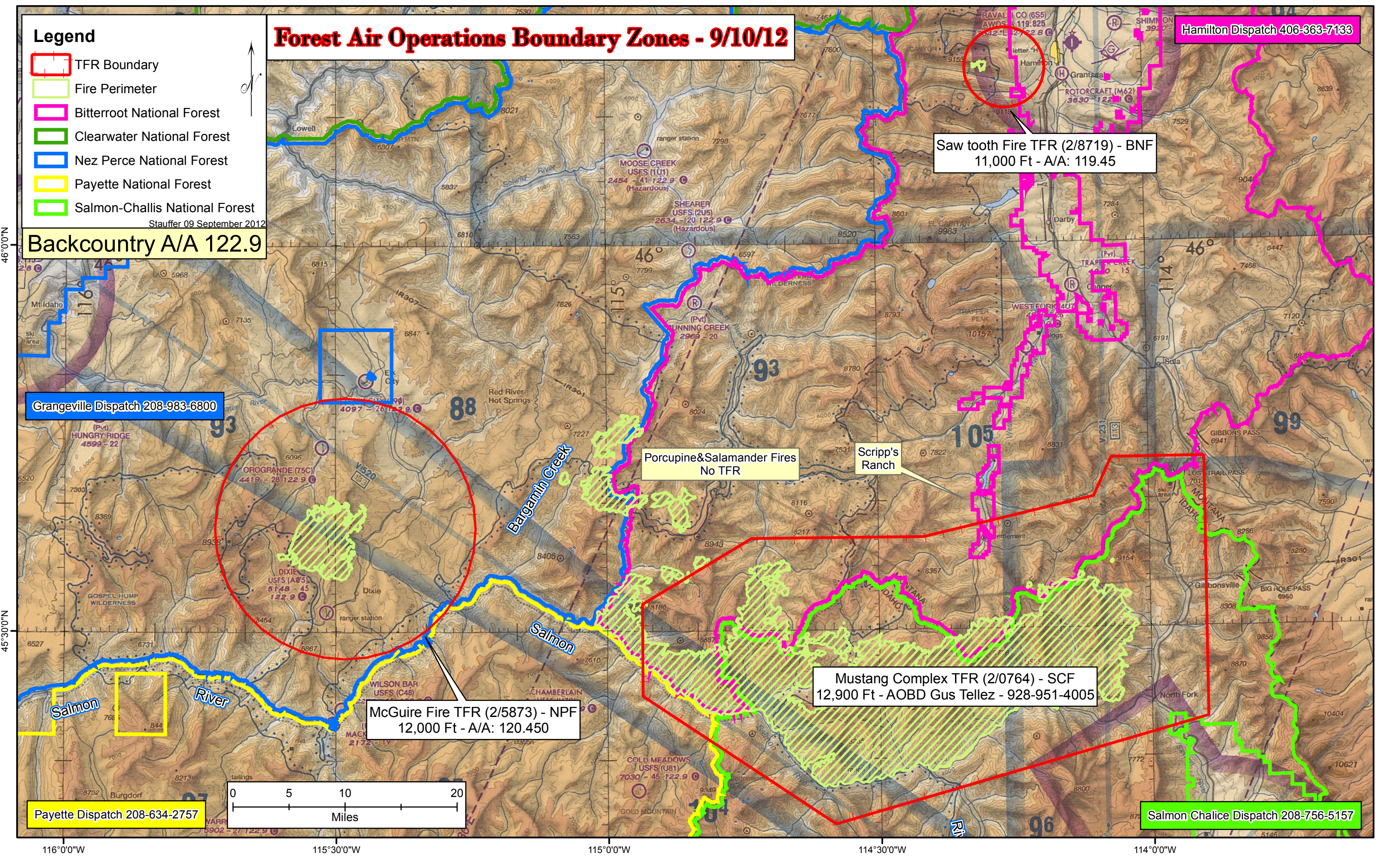
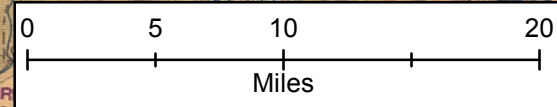
Scripp's Ranch

Mustang Complex TFR (2/0764) - SCF
12,900 Ft - AOBG Gus Tellez - 928-951-4005

McGuire Fire TFR (2/5873) - NPF
12,000 Ft - A/A: 120.450

Payette Dispatch 208-634-2757

Salmon Chalice Dispatch 208-756-5157



46°0'0"N

45°30'0"N

116°0'0"W 115°30'0"W 115°0'0"W 114°30'0"W 114°0'0"W