

# Forest Air Operations Boundary Zones - 9/11/12

- Legend**
- TFR Boundary
  - Fire Perimeter
  - Bitterroot National Forest
  - Clearwater National Forest
  - Nez Perce National Forest
  - Payette National Forest
  - Salmon-Challis National Forest

Backcountry A/A: 122.9

Grangeville Dispatch 208-983-6800

Grangeville Dispatch 208-983-6800

Sheep Fire TFR (2/0977) - NPF  
10,000 Ft. - A/A: 133.175

McGuire Fire TFR (2/1879) - NPF  
12,000 Ft. - A/A: 120.450

Powell Complex TFR (2/9170) - CNF  
10,500 Ft. - A/A: 118.800

Fern Fire TFR (2/1603) - CNF  
11,500 Ft. - A/A: 118.800

Sawtooth Fire TFR (2/8719) - BNF  
11,000 Ft. - A/A: 119.450

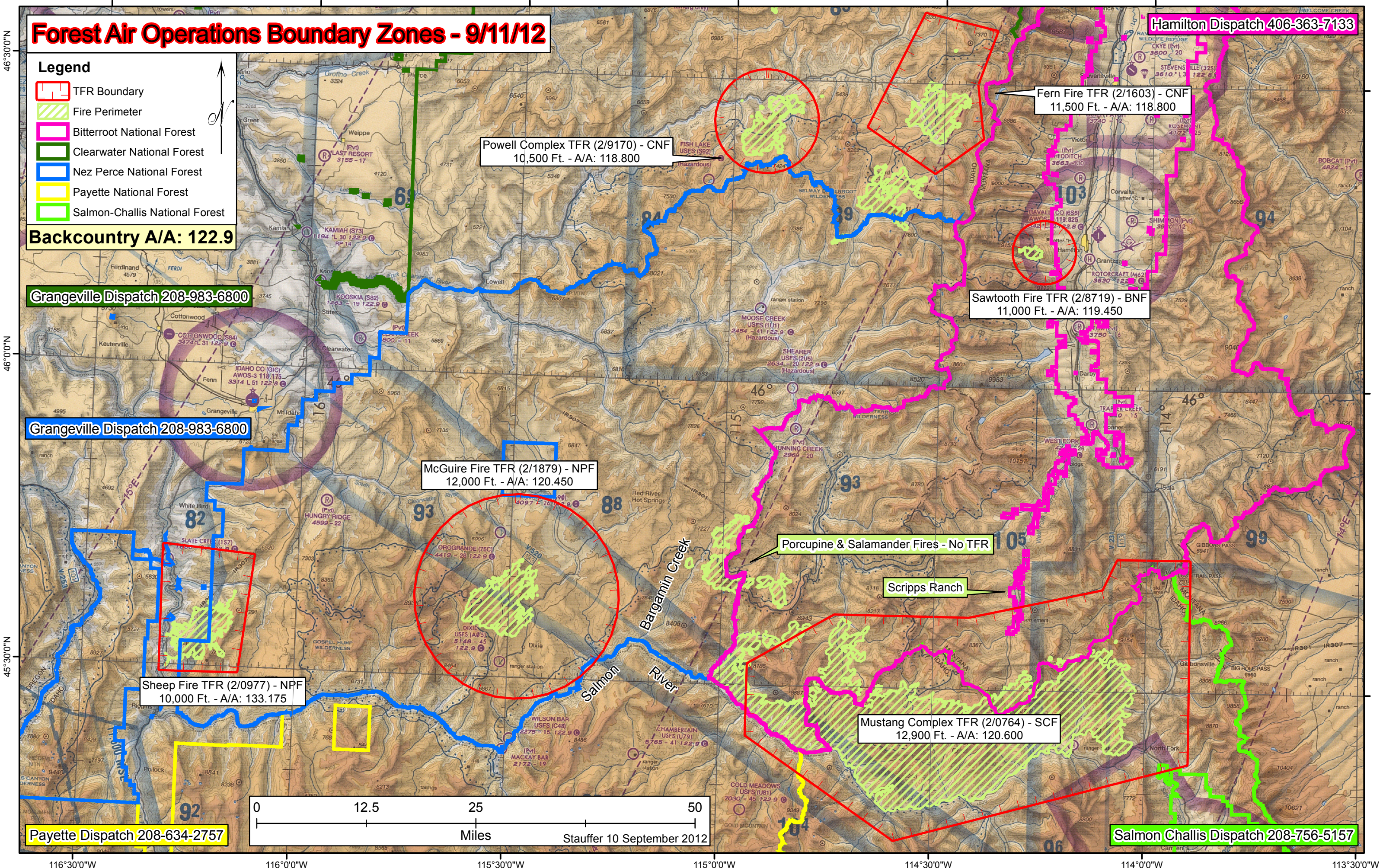
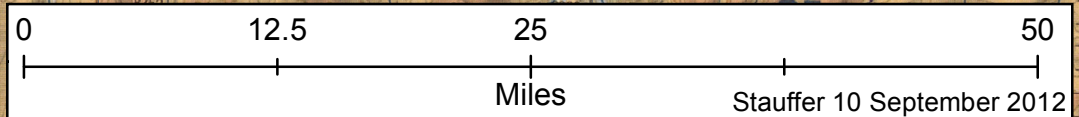
Porcupine & Salamander Fires - No TFR

Scripps Ranch

Mustang Complex TFR (2/0764) - SCF  
12,900 Ft. - A/A: 120.600

Hamilton Dispatch 406-363-7133

Salmon Challis Dispatch 208-756-5157



116°30'0"W 116°0'0"W 115°30'0"W 115°0'0"W 114°30'0"W 114°0'0"W 113°30'0"W

46°30'0"N  
46°0'0"N  
45°30'0"N