





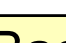


- Legend**
-  TFR Boundary
  -  Fire Perimeter
  -  Bitterroot National Forest
  -  Clearwater National Forest
  -  Nez Perce National Forest
  -  Payette National Forest
  -  Salmon-Challis National Forest

Stauffer 17 September 2012

# Forest Air Operations Boundary Zones - 9/18/12

Hamilton Dispatch 406-363-7133

Backcountry A/A 122.9

Grangeville Dispatch 208-983-6800

Grangeville Dispatch 208-983-6800

Payette Dispatch 208-634-2757

Powell SBW Complex TFR (2/9170) - CNF  
10,500 Ft - A/A: 118.800

Fern Fire TFR (2/1603) - CNF  
11,500 Ft - A/A: 118.800

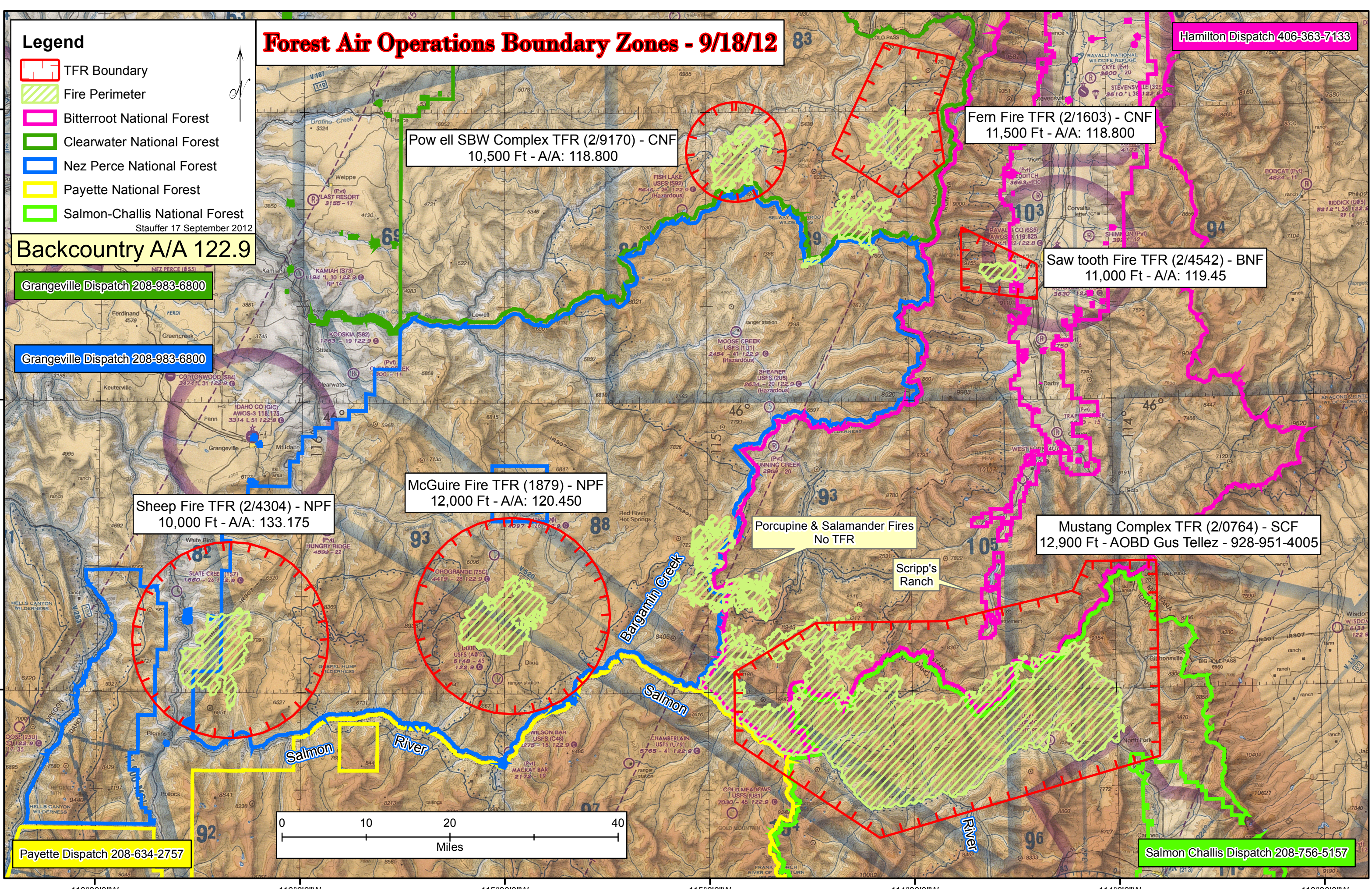
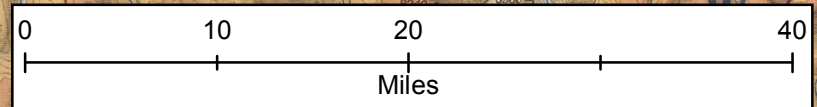
Saw tooth Fire TFR (2/4542) - BNF  
11,000 Ft - A/A: 119.45

Sheep Fire TFR (2/4304) - NPF  
10,000 Ft - A/A: 133.175

McGuire Fire TFR (1879) - NPF  
12,000 Ft - A/A: 120.450

Porcupine & Salamander Fires  
No TFR

Mustang Complex TFR (2/0764) - SCF  
12,900 Ft - A/OBD Gus Tellez - 928-951-4005



Scripp's Ranch

Salmon Challis Dispatch 208-756-5157