

# Forest Air Operations Boundary Zones - 9/20/12

Backcountry A/A 122.9

Grangeville Dispatch 208-983-6800

Hamilton Dispatch 406-363-7133

Porcupine & Salamander Fires  
No TFR

Scripp's  
Ranch

McGuire Fire TFR (1879) - NPF  
12,000 Ft - A/A: 120.450

Mustang Complex TFR (2/0764) - SCF  
12,900 Ft - AOB Pete Schwab 520-400-5874

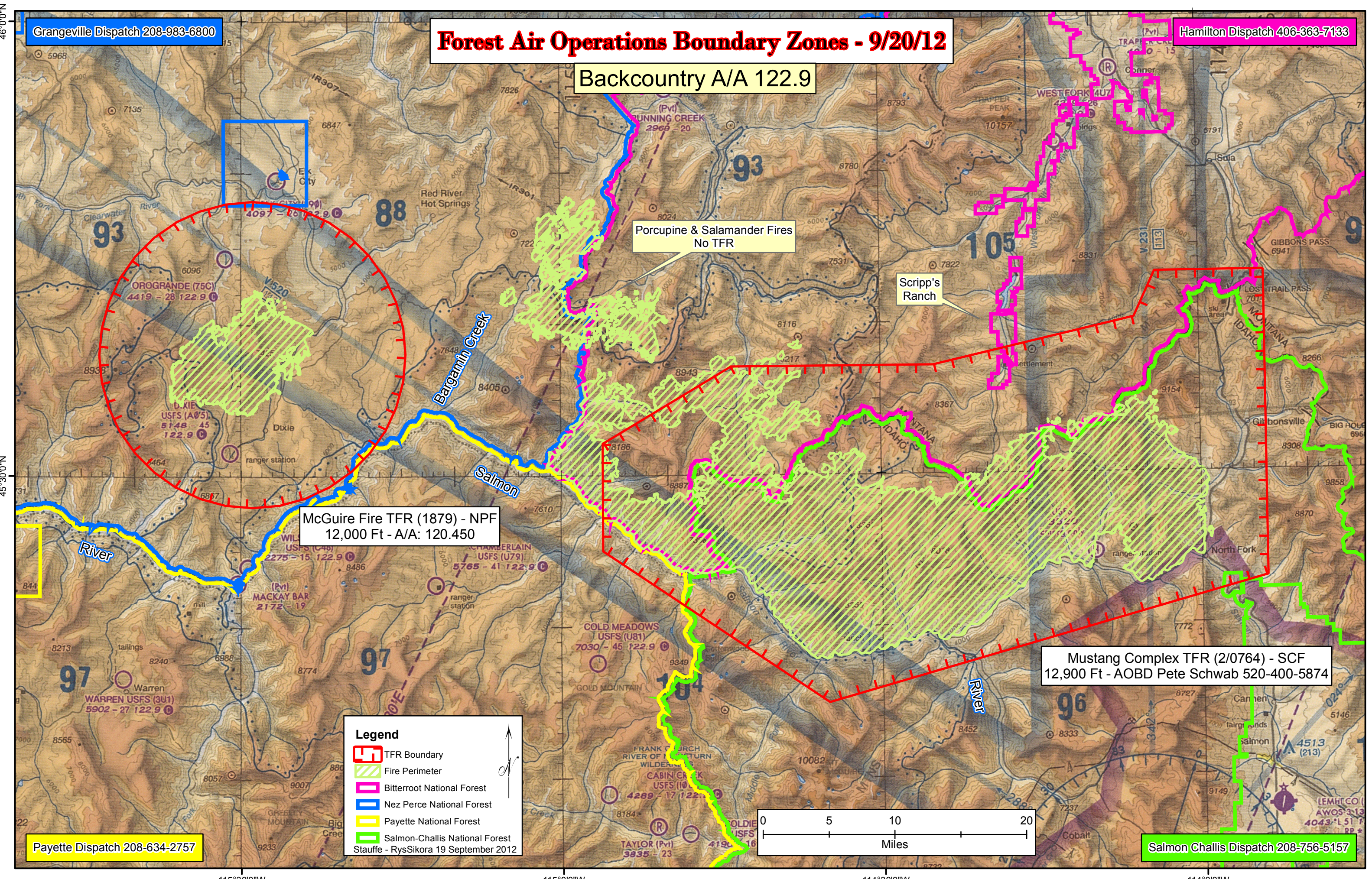
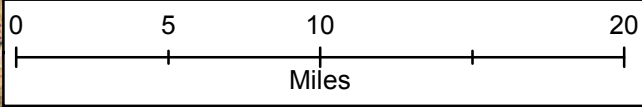
Payette Dispatch 208-634-2757

Salmon Challis Dispatch 208-756-5157

**Legend**

- TFR Boundary
- Fire Perimeter
- Bitterroot National Forest
- Nez Perce National Forest
- Payette National Forest
- Salmon-Challis National Forest

Stauffe - RysSikora 19 September 2012



46°0'0"N  
45°30'0"N

115°30'0"W 115°0'0"W 114°30'0"W 114°0'0"W