

Forest Air Operations Boundary Zones - 9/26/12

- Legend**
- TFR Boundary
 - Fire Perimeter
 - Bitterroot National Forest
 - Clearwater National Forest
 - Nez Perce National Forest
 - Payette National Forest
 - Salmon-Challis National Forest

Backcountry A/A 122.9

Grangeville Dispatch 208-983-6800

Grangeville Dispatch 208-983-6800

Payette Dispatch 208-634-2757

Hamilton Dispatch 406-363-7133

Fern Fire TFR (2/1603) - CWF
11,500 Ft - A/A: 118.800

Powell SBW Complex TFR (2/9170) - CWF
10,500 Ft - A/A: 118.800

Sawtooth Fire TFR (2/4542) - BRF
11,000 Ft - A/A: 119.45

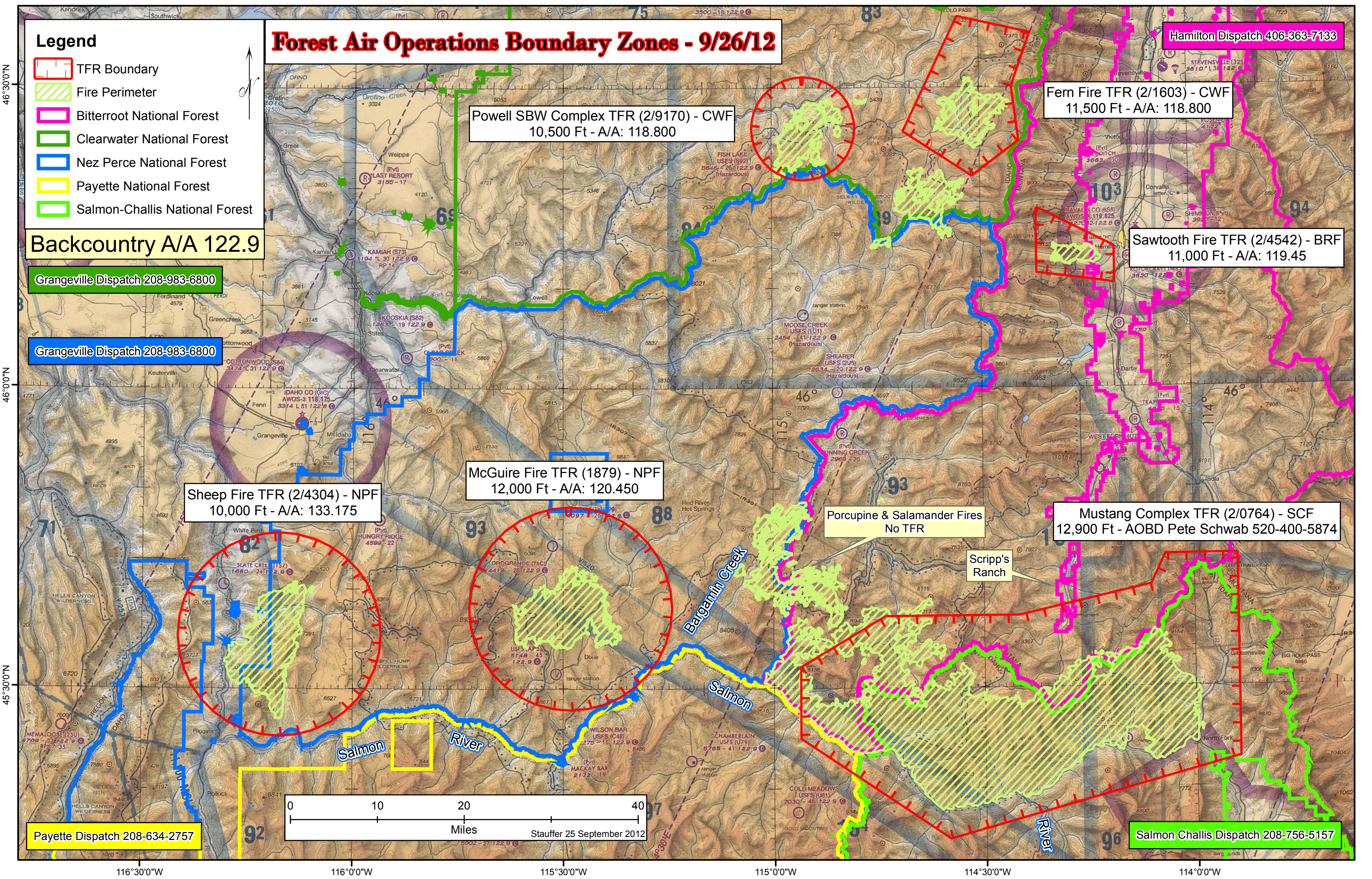
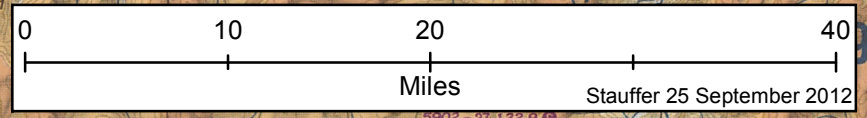
Sheep Fire TFR (2/4304) - NPF
10,000 Ft - A/A: 133.175

McGuire Fire TFR (1879) - NPF
12,000 Ft - A/A: 120.450

Mustang Complex TFR (2/0764) - SCF
12,900 Ft - AOB Pete Schwab 520-400-5874

Porcupine & Salamander Fires
No TFR

Scripp's Ranch



46°30'0"N
46°0'0"N
45°30'0"N

116°30'0"W 116°0'0"W 115°30'0"W 115°0'0"W 114°30'0"W 114°0'0"W