



# MT & ID TFRs - 9/27/12

## Legend

-  TFR Boundary
-  State Boundaries

Backcountry A/A 122.9

Condon Mtn. TFR (2/6003) - FNF  
11,700 Ft - A/A: 124.050

Powell TFR (2/9170) - CWF  
10,500 Ft - A/A: 118.800

Fern TFR (2/1603) - CWF  
11,500 Ft - A/A: 118.800

Sheep TFR (2/4304) - NPF  
10,000 Ft - A/A: 133.175

McGuire TFR (2/1879) - NPF  
12,000 Ft - A/A: 120.450

Sawtooth TFR (2/4542) - BRF  
11,000 Ft - A/A: 119.450

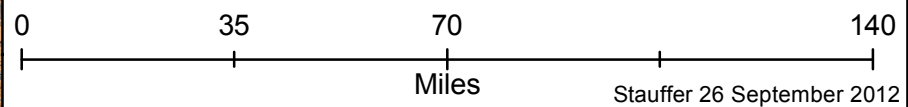
Eagle Creek TFR (2/7797) - BIA  
8,000 Ft - A/A: 123.575

Wesley TFR (2/7967) - PAF  
11,000 Ft - A/A: 135.325

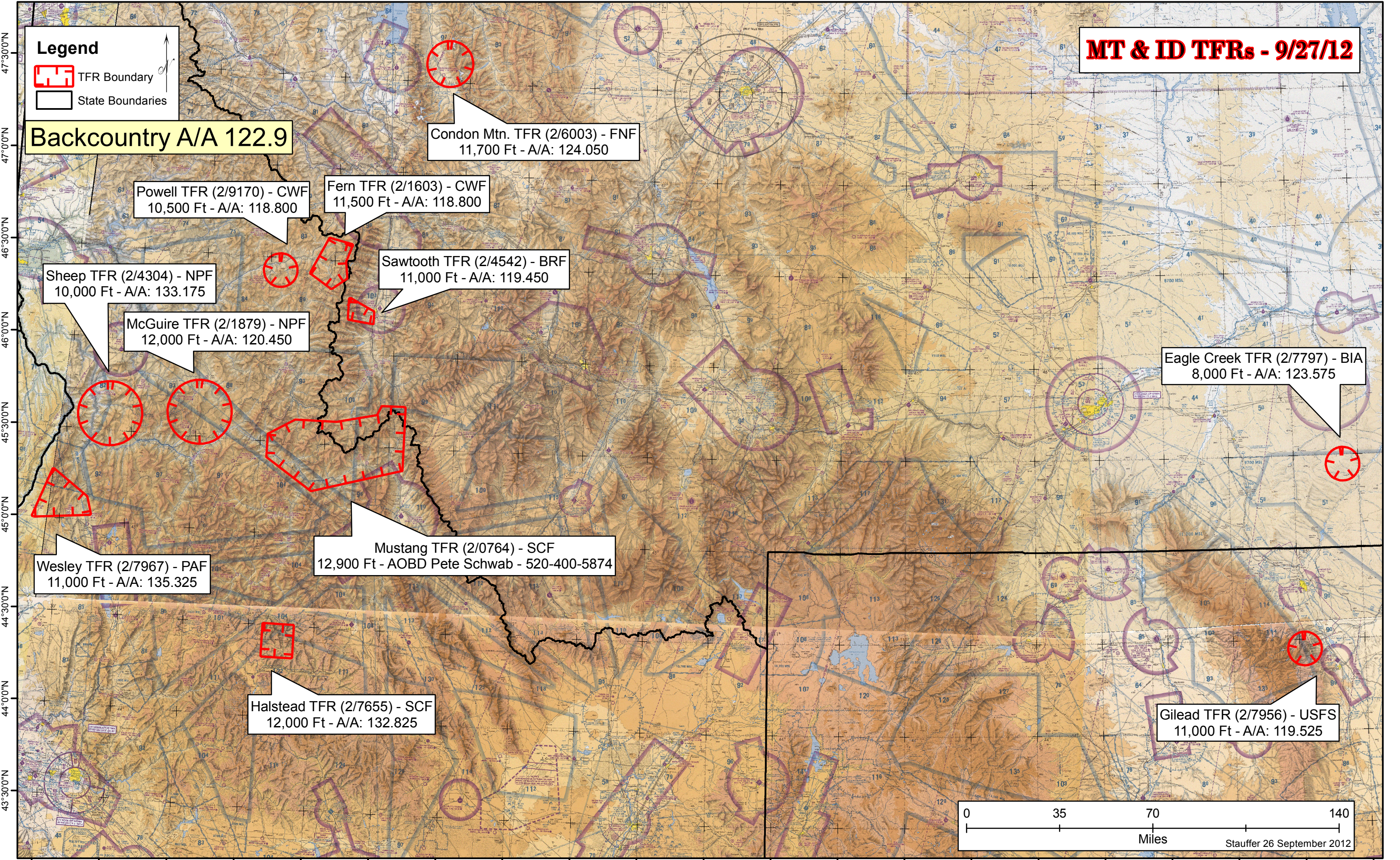
Mustang TFR (2/0764) - SCF  
12,900 Ft - AOB Pete Schwab - 520-400-5874

Halstead TFR (2/7655) - SCF  
12,000 Ft - A/A: 132.825

Gilead TFR (2/7956) - USFS  
11,000 Ft - A/A: 119.525



Stauffer 26 September 2012



116°30'0"W 116°0'0"W 115°30'0"W 115°0'0"W 114°30'0"W 114°0'0"W 113°30'0"W 113°0'0"W 112°30'0"W 112°0'0"W 111°30'0"W 111°0'0"W 110°30'0"W 110°0'0"W 109°30'0"W 109°0'0"W 108°30'0"W 108°0'0"W 107°30'0"W 107°0'0"W 106°30'0"W