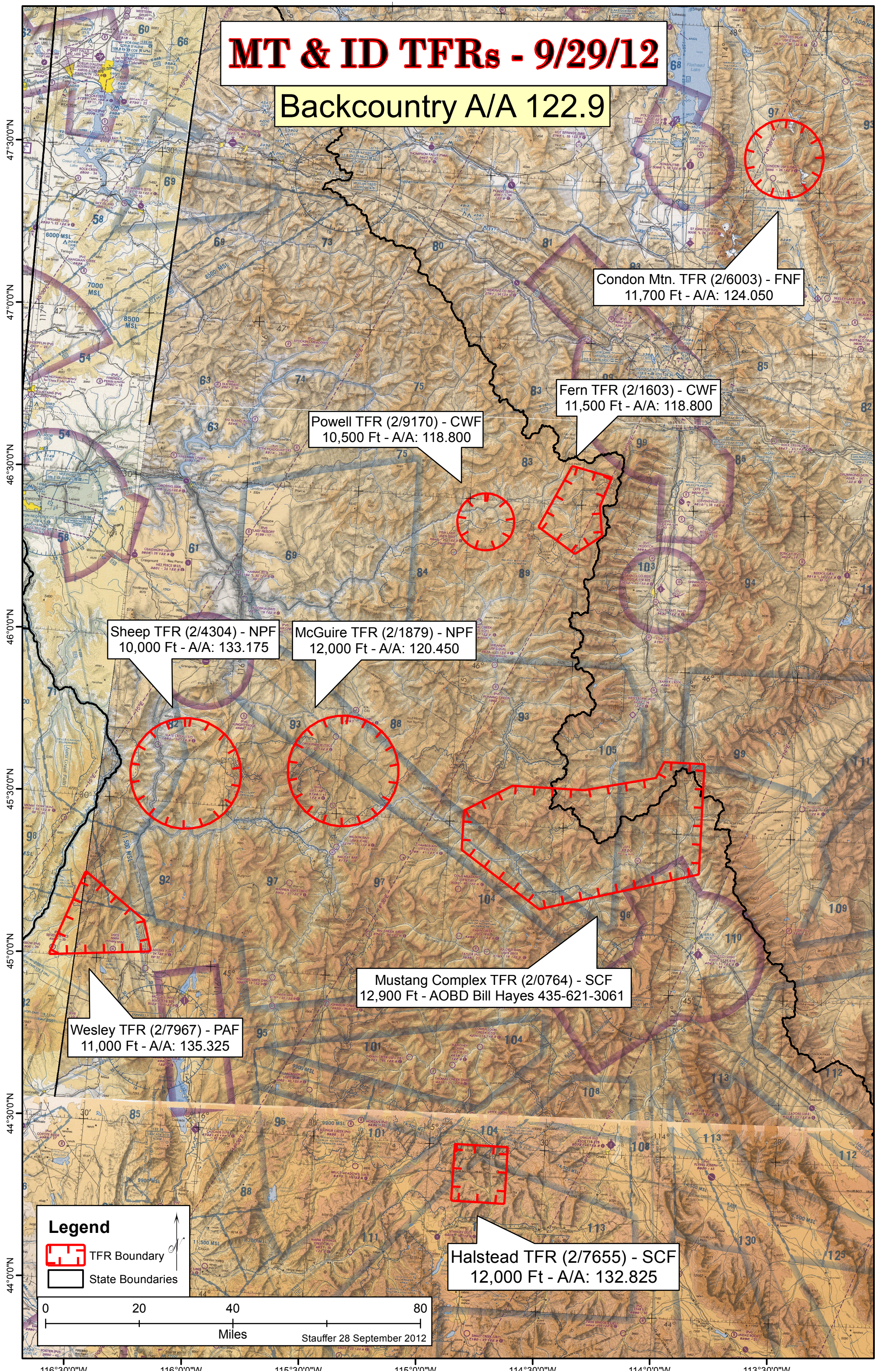


MT & ID TFRs - 9/29/12

Backcountry A/A 122.9



Sheep TFR (2/4304) - NPF
10,000 Ft - A/A: 133.175

McGuire TFR (2/1879) - NPF
12,000 Ft - A/A: 120.450

Fern TFR (2/1603) - CWF
11,500 Ft - A/A: 118.800

Powell TFR (2/9170) - CWF
10,500 Ft - A/A: 118.800

Condon Mtn. TFR (2/6003) - FNF
11,700 Ft - A/A: 124.050

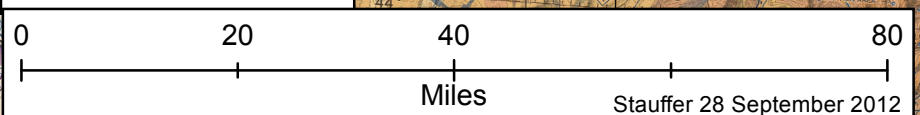
Mustang Complex TFR (2/0764) - SCF
12,900 Ft - AOBD Bill Hayes 435-621-3061

Wesley TFR (2/7967) - PAF
11,000 Ft - A/A: 135.325

Halstead TFR (2/7655) - SCF
12,000 Ft - A/A: 132.825

Legend

- TFR Boundary
- State Boundaries



Stauffer 28 September 2012

116°30'0"W 116°0'0"W 115°30'0"W 115°0'0"W 114°30'0"W 114°0'0"W 113°30'0"W