

# Forest Air Operations Boundary Zones - 10/2/12

Grangeville Dispatch 208-983-6800

Hamilton Dispatch 406-363-7133

Sheep Fire TFR (2/4304) - NPF  
10,000 Ft - A/A: 133.175

McGuire Fire TFR (1879) - NPF  
12,000 Ft - A/A: 120.450

Porcupine & Salamander Fires  
No TFR

Mustang Complex TFR (2/0764) - SCF  
12,900 Ft - AOBD Bill Hayes 435-621-3061

Grangeville Dispatch 208-983-6800

Wesley TFR (2/7967) - PAF  
11,000 Ft - A/A: 135.325  
-No IR Data Found-

Salmon Challis Dispatch 208-756-5157

Payette Dispatch 208-634-2757

**Legend**

- TFR Boundary
- Fire Perimeter
- Bitterroot National Forest
- Clearwater National Forest
- Nez Perce National Forest
- Payette National Forest
- Salmon-Challis National Forest
- State Boundary

Washington

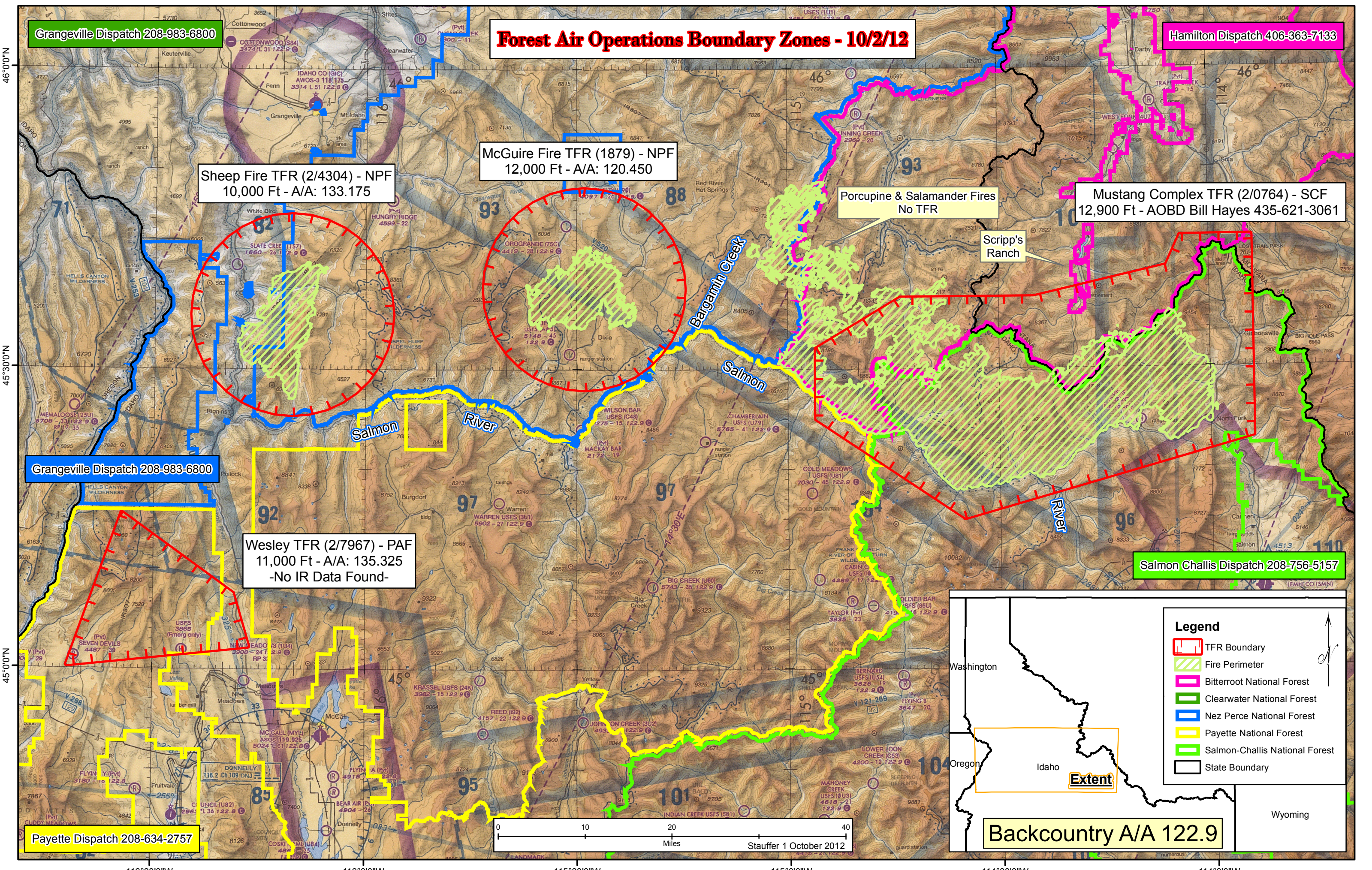
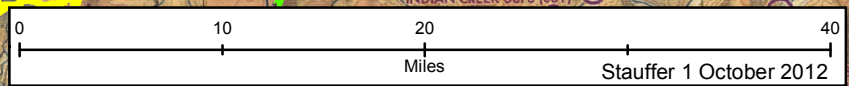
Oregon

Idaho

Wyoming

**Extent**

**Backcountry A/A 122.9**



46°0'0"N  
45°30'0"N  
45°0'0"N

116°30'0"W      116°0'0"W      115°30'0"W      115°0'0"W      114°30'0"W      114°0'0"W