

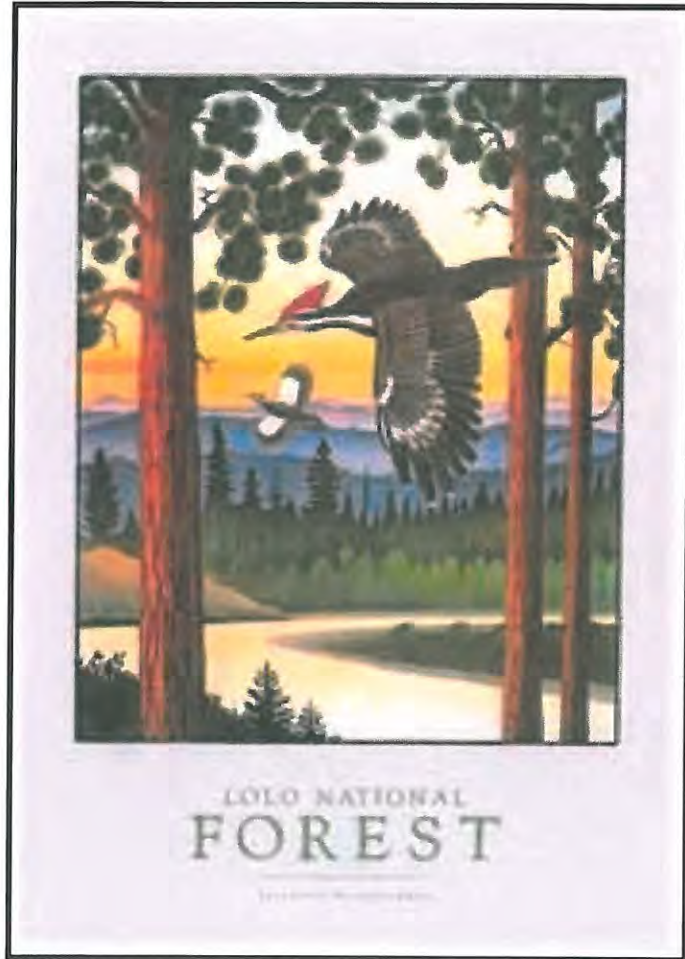
INCIDENT ACTION PLAN

Mike Almas Incident Management Team

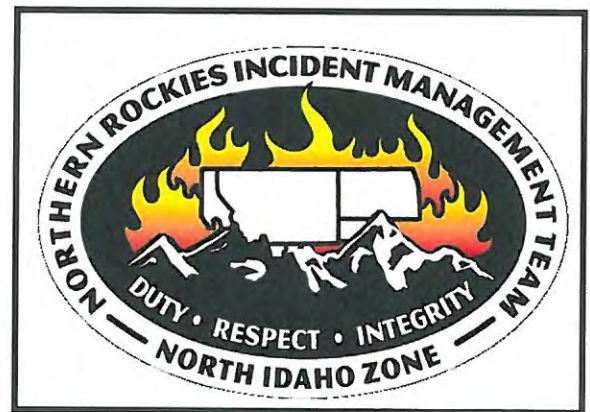
SAPPHIRE COMPLEX

MT – LNF – 001463

USFS: P1K7XL (0116); IDL: FED11417
DNRC: 767012; DOI: K7XL



FRIDAY,
SEPTEMBER 1,
2017



DAY SHIFT: 0600 - 2000
NIGHT SHIFT: 1800 – 0800



Please help us make sure our maps meet your needs by taking this short survey. →



Ops IR Aerial Photo
Background



Transportation



Air Ops Branch I



Ops IR Topo Background



Topo Fire Perimeter Only



Air Ops Branch II



INCIDENT OBJECTIVES ICS-202	1. INCIDENT NAME SAPPHIRE COMPLEX	2. DATE 09/01/17	3. TIME 0600 – 2000 1800 – 0800
--	--	---------------------------------------	--

MANAGEMENT OBJECTIVES:

- Implement good risk management practices in order to provide for firefighter, other responder and public safety.
Use good risk analysis processes including the principles of the 10 Standard Fire Orders, LCES, and the 18 Watch-Out Situations as the foundation for risk decisions at all levels.
Continue the evaluation of long-range risk management strategies with the incident management organization and the Agency Administrators.
- Ensure timely and accurate dissemination and coordination of information regarding fire related activities is provided to the public, cooperators, elected officials and stakeholders.
- Evaluate all management actions on a cost versus benefit basis.

OPERATIONAL OBJECTIVES:

- Manage all three fires in the Sapphire Complex (Goat Creek, Sliderock and Little Hogback) under a full range of suppression strategies.
Use point and/or zone protection tactics where needed to minimize impacts to values at risk and firefighter exposure.
Prioritize values at risk as follows: Private lands, infrastructure, grazing allotments, and natural, cultural, and heritage resources.
- Provide initial attack support on the Lolo National Forest and initial attack response on Montana DNRC and Beaverhead-Deerlodge National Forest protection within the Temporary Flight Restriction (TFR).
- Coordinate all suppression and suppression repair actions with the assigned Resource Advisor prior to implementation.

COMMANDERS INTENT:

Strategy: The Sapphire Complex strategy is based on “Values at Risk” with Firefighters and the Public being the highest value. We will engage the fire on our terms at the appropriate tempo, where probability of success is high and the risk is mitigated to acceptable levels.

Task: To use Risk Management Principles when engaging the fire. Know when, where and why to engage the fire, and what the values and hazards are.

Purpose: To reduce firefighter exposure to existing hazards on the fire and understand why you are being asked to accept the risk.

End State: Reduce the potential of a bad outcome.

Task: To meet the intent of the Management and Operational objectives.

Purpose: To provide the highest level of customer services for all involved with or affected by the incident.

End State: Progress has been made toward meeting all incident objectives. Stakeholders and agencies have been communicated and coordinated with at a high level. Resource Advisors have been engaged with during suppression and repair efforts.

Attachments

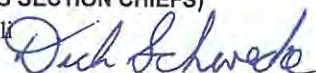
Organization List (ICS 203)
 Fire Weather Forecast
 Fire Behavior Summary
 Safety Message

Division Assignments (ICS 204's)
 Communications Plan (ICS 205)
 Medical Plan (ICS 206)
 Air Ops Summary (ICS 220)

Miscellaneous Messages
 Transportation / Fire Maps
 Unit Log
 Emergency Medical Procedures / 9-Line

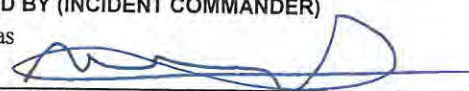
PREPARED BY (PLANNING SECTION CHIEFS)

Dave Lattimore / Lisa Spinelli
 Dick Schwecke,



APPROVED BY (INCIDENT COMMANDER)

Mike Almas



ORGANIZATION ASSIGNMENT LIST ICS-203		9. Operations Section	
1. Incident Name SAPPHIRE COMPLEX		Line Ops	Randy McKenzie, Sam Gibbons, Chris Lundgren
		Planning Ops	Jim Grant
		a. Branch I	
2. Date 8/31/2017	3. Time 2000	Division/Group G (Goat Crk)	Jamie Long
		Division/Group G (Sliderock)	Jamie Long
4. Operational Period DAY SHIFT 0600-2000 9/01/2017 NIGHT SHIFT 1600-0800		Division/Group	
		Division/Group	
5. Command		Division/Group	
Incident Commander	Mike Almas	Division/Group	
Deputy	Roger Staats		
Safety Officer	Jim Bartlett, Bill Altman, Craig Cowie, Brandon Skinner (T), J.D. Bauman (T)	b. Branch II	
Information Officer	Jennifer Costich-Thompson	Division/Group N	Matt White, West Duncan (T)
Liaison Officer	Mark Harvey, Dan Jacobs Jason Steinmetz (T)	Division/Group O	Jeffry Handel, Jon Devino (T)
6. Agency Representatives		Division/Group P	Russ Frei, Amanda Holt (T)
Agency	Name	Division/Group Z	Vance Hazelton
USFS – Lolo NF	Jen Hensiek, Dale Deiter	Division/Group Structure	Ron Roberts, Waylon Meek (T)
DNRC	Brian Robbins	Division/Group Night	Nate Arellano
BLM	Joe Ashor		
USFS – B-D NF	Cameron Rasor	c. Branch III	
7. Planning Section			
Chief	Dave Lattimore, Lisa Spinelli (T)		
Deputy	Dick Schwecke		
Resources Unit	Karl Dekome		
Situation Unit	Bill Coates, Glenn Palmgren (T)		
GIS	Adam Ridley, Luke Floch, Jack Sheffey, Rob Daley (T), Fay Ellen Dearing (T)		
Documentation Unit			
Demobilization Unit	Janet Krivacek, Laurie Oliver	d. Air Operations Branch	
Status-Check In	David Lemmien	Air Ops Branch Director	Hugh Carson, Vince Welbaum
FBAN	Tim Klukas, Mike Housh (T)	Air Support Group Supervisor	Carl Ritchie
CTSP	Brent Conrad, Sherry Rivera		
Weather Forecast	Kelly Hooper, Derek Williams (T)		
HRSP	Dale Tribby		
Training Specialist	Angelic Koch		
BLM READ	Steve Hancock, Lea Tuttle		
B-D READ	Wade Jerome, Jen Salix		
Lolo READ	Jennifer House		
Field Observers	Roy Hunter, Luke Hurley, Matt Eldridge	10. Finance Section	
8. Logistics Section		Chief	LeAnn Maupin
Chief	Ed Hinds	Deputy	
Deputy	Dave Klym	Time Unit	Barbara King, Christopher Remsen (T)
Supply Unit	Linda Blondeau	Procurement Unit	Jeffrey Worthley (T)
Facilities Unit	Cody Hobart, Patrick Merrill	Compensation/Claims Unit	
Ground Support Unit	Gerard Maney	Cost Unit	Annette Hoyer
Communications Unit	Jeannie Nez Perce	Prepared by (Resource Unit Leader Karl Dekome, RESL Dick Schwecke, PSC	
Communication Tech	Roger Menard		
Medical Unit	Peggy Miller, Dave Poxleitner (T)		
Security Unit	Pete Dean (208) 451-4280		
Food Unit	Sally Kuhlberg		
Ordering Manager	Susan Hillstrom, Joshua Bender		
RCDM	Julie Ann Scholla, Richard Pane		



Fire Weather Forecast

FORECAST NO: 47
SHIFT DATE: Fri September 1, 2017
FORECAST ISSUED: August 31, 2017

NAME OF FIRE: Sapphire Complex
UNIT: MT-LNF
Incident Meteorologist (T): Derek Williams 208-252-2291
Incident Meteorologist: Kelly Hooper 270-217-0860

Derek Williams
Kelly Hooper

*****Elevated winds continue today*****

DISCUSSION: High pressure will begin to build over the region bringing warmer temperatures and drier conditions to the area today. Winds will still be elevated today but will stay below critical levels. Local smoke dispersion will be enhanced with the steady west winds in place but regional smoke and haze will remain.

TODAY:

WEATHER: Warmer and dry. Areas of smoke and haze, diminishing in the afternoon.

WIND (20 FT): Valleys: Upslope/upvalley 6-9 mph, W 9-14 mph in aligned valleys.
Ridges: W 15-20 mph.

MAX TEMPERATURES: Valleys 79-84, Ridges 75-79

MIN RH: Valleys 11-17% Ridges 19-24%

HAINES INDEX: 4 LAL: 1

CHANCE OF WETTING RAIN: 0%

INVERSION: Inversion lifting 1100 MDT, Less widespread smoke but haze will linger.

TONIGHT:

WEATHER: Areas of smoke and haze.

WIND (20 FT): Valleys: W-NW wind 5 to 10 mph, downslope/downvalley 3-6 mph after midnight.
Ridges: W-NW 13-18 mph, diminishing after midnight.

MIN TEMPERATURES: Valleys 39-44, Ridges: 46-51

MAX RH: Valleys: 55-65% Ridges: 40-50%

HAINES INDEX: 1 LAL: 1

CHANCE OF WETTING RAIN: 0%

SATURDAY:

WEATHER: Hotter and drier. Areas of smoke and haze.

WIND (20 FT): Valleys: Upslope/upvalley 6-9 mph, W 8-13 mph in aligned valleys.
Ridges: W 14-19 mph.

MAX TEMPERATURES: Valleys 87-91, Ridges 83-87

MIN RH: Valleys: 11-16% Ridges: 15-20%

HAINES INDEX: 4 LAL: 1

CHANCE OF WETTING RAIN: 0%

Sunday through Tuesday: High pressure along with dry and hot conditions will build back over the northern Rockies over the weekend. High temperatures will rebound into the upper 80s and lower 90s over the weekend with very low relative humidity. A weak back door cold front may promote east winds early next week. Drought conditions will expand and worsen across western Montana.

FIRE BEHAVIOR FORECAST

FORECAST NUMBER: 22	TYPE OF FIRE: Wildfire
FIRE NAME: Sapphire Complex	OPERATIONAL PERIOD: 09/01/2017 0600 - 2100
DATE ISSUED: 8-31-2017 @ 2000	
UNIT: MT-BDF	SIGNED: Mike Housh FBANT

INPUTS

WEATHER SUMMARY:

Warm and dry conditions have persisted over the fire area for the last 7-10 days. A cold front has moved through the area and warmer and drier conditions will return. Winds will be out of the West @ 15-20 mph with relative humidity @ 15-20% today.

Local RAWS Observations (GIRD RAWS Station ID: 242911)			
Index	90 th Percentile	97 th Percentile	Current 1300 Observation (31 Aug 2017)
Energy Release Component (ERC)	65	75	73
10 Hr Fuel Moisture	5%	4%	6%
100 Hr Fuel Moisture	7%	6%	7%
1000 Hr Fuel Moisture	8%	8%	8%
Woody Fuel Moisture	70%	70%	70%

OUTPUTS

FIRE BEHAVIOR

GENERAL:

Fire will continue to burn in the higher elevations with isolated and group torching events where wind, slope, and fuel align. Anticipate this activity beginning around 1100 hours, and concluding around 1900. Lighter smoke concentrations will have less of an influence on inhibiting fire activity. Areas where blow down exist increases the surface fuel loading and will burn with longer residence time, and burn later into the evening. Smokes and heat will continue to show themselves elsewhere on the fire. Fire behavior outside of containment lines would be fast moving and intense especially in the grass/sage fuel type.

SPECIFIC:

Forested high elevation Lodgepole (TU5): (All Divisions)

- Primary Carrier of fire is heavy forest litter, shrub and/or small tree understory.
- Considerable amount of standing and downed dead material due to bug kill.
- Large fuels are consuming due to low 100 & 1000 hour fuel moistures.

Forested mid-elevation Douglas-fir (TL5): (All Divisions)

- Primary carrier of fire is the high load conifer litter and light slash.
- Many of the Douglas Fir have been defoliated increasing surface fuels, however, decrease potential for crown fire initiation.

Grass/ Sage low-elevation (GS2): (All Divisions)

- Primary carrier of fire is grass and shrub combined.
- More common on dry exposed south facing slopes.
- Steep slopes and higher windspeeds significantly changes fire behavior and intensity.

General Fire Behavior Observations

- Isolated and group torching fire behavior beginning around 1100-1300.
- Additional smokes are beginning to appear as we continue to dry out.
- The understory vegetation can be considered cured due to low live fuel moistures.
- Soil moistures are in droughty conditions, and dry mopping is not aided by any moisture in the soil.

Output Variable	Unit/s	Grass/Sage (GS2)	Lodgepole (TU5)	Douglas Fir (TL5)
Surface Rate of Spread (maximum)	Ch/hr	57.1	18.7	9.3
Flame Length	ft	8.0	10.9	3.2
Probability of Ignition from a Firebrand	%	84	84	84
Spotting Distance	mi	0.2-0.4	0.2-0.4	0.2-0.4

*** Areas with East/West aligned valleys/drainages should expect increased windspeeds and increased fire behavior***

AIR OPERATIONS:

Morning inversion and smoke will impact visibility for air operations. However, smoke concentration will be less than previous operational periods due to regional smoke being carried westward. Inversion should lift after 1100

SAFETY

Some suppression tools, such as helicopters or air tankers, can adversely affect fire behavior. The blasts of air from low-flying helicopters and air tankers have been known to cause flare-ups.

HEALTH AND SAFETY MESSAGE

SAFETY starts with *YOU*

We are ALL accountable for SAFE behaviors

INCIDENT: **Sapphire**

DATE: 9/1/17

Major Hazards and Risks:

- 1) **Complacency**
- 2) **Structure Protection**
- 3) **Road Side Operations**

- 1) Steep terrain, hazard trees, rolling rocks, chainsaw operations, unburned fuels, aviation ops, just some of the identified hazards. They are still present so do not let your guard down. Thorough risk analysis completed and LCES established until the end of your tour.
- 2) It looks like the fire is getting much closer to structures so look at the IRPG page 12, Wildland Urban Interface Fire Fighting.
- 3) Keep all hose, tools and equipment out of the traffic lane. Park all vehicles on the same side of the road. Conduct all operations as far from traffic lanes as possible. Be aware of all the public still in the fire area.

Watch Out Situation of the Day



1. FIRE NOT SCOUTED AND SIZED UP

Common Denominators of Fire Behavior On Tragedy Fires

- *Most incidents happen on the smaller fires or on Isolated portions of larger fires.
- *Most fires are innocent in appearance before the “flare-ups” or “blow-ups”. In some cases, tragedies occur in the mop-up stage.
- *Flare-ups generally occur in deceptively light fuels.
- *Fires run uphill surprisingly fast in chimneys, gullies, chutes and on steep slopes.
- *Some suppression tools, such as helicopters or air tankers, can adversely affect fire behavior. The blasts of air from low flying helicopters and air tankers have been known to cause flare-ups.

DIVISION-SPECIFIC MEDICAL EMERGENCY ACTION PLAN

Pre-Planning for today's assignment

What are the likely hazards that could cause injuries? What kind of severe injuries?	
Who is the likely in-charge DIVS or overhead for an emergency in your assigned area today? (i.e. "Division Zulu")	
Who are the Medical personnel assigned to your part of the incident? What are their capabilities?	
Other Emergency Responders: fire dept, crash rescue, ambulance?	
Communications: Command channel, Air to Ground, Medical helicopters, local rescue/medical?	
Transportation methods available	Ground vehicle, drop point, coordinates, travel route?
	Aircraft I.D, helispot names, coordinates? Hoist capable, internal transport
	Other available methods - contingency
Most likely workforce for evacuation	

Response checklist

Who takes charge?

- DIVS or designated Overhead manages the overall scene and evacuation process.
- Medical personnel and emergency responders manage patients and conduct rescues.
- OPS and IC make command decisions so the emergency can be given full attention and management. They continue to manage ongoing incident operations.

Response sequence:

- First, secure the scene and protect responders and patients from further injury.
- Clear the Command channel for "Emergency Traffic only" if this is a critical emergency. If not, inform Communications of non-critical-emergency status and use normal communications.
- Contact closest Medical personnel and DIVS or designated Overhead for response.
- Notify Communications to initiate Accident Action Plan response.

Information for Communications:

- Type and extent of injuries?
- Airway or breathing problems? Serious bleeding?
- Is an EMT present or needed? Are Paramedics (Advanced Life Support) needed?
- Specific location of patients (Lat/Long, access route, DP#, helicopter Landing Zone)?
- What type of transport is needed? Helicopter medevac, hoist, ambulance or ground transport?
- Name of contact person in charge of the scene.
- Do not use names of patients at any time.
- Medical Emergency Responders confer with Medical Unit Leader and DIVS or designated Overhead to determine if this is a critical emergency and what type of transport is needed.

DIVISION ASSIGNMENT LIST				1. Branch 1		2. Group G (Goat Creek)					
3. Incident Name Sapphire Complex				4. Operational Period Date: 09/01/2017 Time: 0600-2000							
5. Operations Personnel											
Operations Chief		Sam Gibbons, Randy McKenzie, Chris Lundgren, Jim Grant			Division/Group Supervisor		Jamie Long				
Branch Director					Safety Officer		Jim Bartlett, Brandon Skinner (T)				
6. Resources Assigned this Period											
Strike Team/Task Force/ Resource Designator		Last Shift	Leader		Number Persons	Trans. Needed	Drop Off PT./Time		Pick Up PT./Time		
C-21 HC2 Tri-Cities Forestry		9/1	Martin Morales		20	N	P Burg ICP/0600		P Burg ICP 2100		
E-41 ENG6 Brockway Const.		9/6	Roger Brockway		3	N	P Burg ICP/0600		P Burg ICP 2100		
E-190 WTS2 Castle Mtn Fire		9/3	Bob Brastrup		1	N	P Burg ICP 0600		P Burg ICP 2100		
E-191 WTS2 Bird Water #9		9/3	Jim Sugden		1	N	P Burg ICP 0600		P Burg ICP 2100		
E-192 WTS2 Bird Water #8		9/3	Ray Congdon		1	N	P Burg ICP 0600		P Burg ICP 2100		
E-44 SKG3 Slack		9/4	Brian Twiest		1	N	P Burg ICP 0600		P Burg ICP 2100		
E-232 EXCA T2 Welch Bros w/ Lowboy		9/10	Jim Davis		2	N	P Burg ICP 0600		P Burg ICP 2100		
E-233 EXCA T2 DS JR w/ Lowboy		9/10	Kerry Cross		2	N	P Burg ICP 0600		P Burg ICP 2100		
E-54 UTV Bouche 95754						N	P Burg ICP 0600		P Burg ICP 2100		
O-122 FAL1 Timber Trail		9/2	Seitz & Chitwood		2	N	P Burg ICP/0600		P Burg ICP 2100		
O-327 HEQB		9/1	Mark Bass		1	N	P Burg ICP/0600		P Burg ICP 2100		
O-347 HEQB		9/6	Kevin Lemieux (T)		1	N	P Burg ICP/0600		P Burg ICP 2100		
O-356 EMTF		9/7	Brian Williamson		1	N	P Burg ICP/0600		P Burg ICP 2100		
7. Control Operations Continue mop up of dozer line and patrol of fire perimeter from H6 North to the 4305 road. Mop up standards are based off your experience and knowledge of fuels, weather and topography to lower the probability of escape to acceptable levels.											
8. Special Instructions If FIRE is within one mile of powerline notify Branch 1 Director. Notify Branch 1 Director two hours prior to conducting any work under the powerline. Coordinate with READ on resource protection needs. Gather GPS tracks of all constructed line in Division and turn into the Situation Unit. Specific hazard mitigation: <ul style="list-style-type: none"> Follow the hazard tree mitigation process on page 22 of the IRPG. Maintain a 100 foot exclusion area around equipment. 											
9. Division/Group Communication Summary											
Function	RX Frequency	TX Frequency	Tone	Channel	Function	RX Frequency	TX Frequency	Tone	Channel		
Tactical	168.0500	168.0500	123.0	1	Command	166.3375	170.3875	123.0	9		
Command	168.1000	170.4500	123.0	7	Command	164.6750	169.8125	123.0	10		
Command	169.5375	164.7125	123.0	8	Air to Ground						
Prepared by (Resource Unit/Leader) <i>Paul DeLore</i>				Approved by (Planning Section Chief) <i>W.A. Schwecke</i>				Date 8/31/2017		Time 2000	

DIVISION ASSIGNMENT LIST	1. Branch 1	2. Group G (Sliderock)
---------------------------------	-----------------------	----------------------------------

3. Incident Name Sapphire Complex	4. Operational Period Date: 09/01/2017 Time: 0600-2000
---	---

5. **Operations Personnel**

Operations Chief	Sam Gibbons, Randy McKenzie, Chris Lundgren, Jim Grant	Division/Group Supervisor	Jamie Long
Branch Director		Safety Officer	

6. **Resources Assigned this Period**

Strike Team/Task Force/ Resource Designator	Last Shift	Leader	Number Persons	Trans. Needed	Drop Off PT./Time	Pick Up PT./Time
Unstaffed						

7. Control Operations
Patrol by air attack and ground resources.

8. Special Instructions
Along Trail #245, use existing trail as fireline. Improve when needed.
If fireline is constructed, build beyond maximum sight distance from trail using the smallest tracked excavator.
Coordinate with READ on resource protection needs.
Gather GPS tracks of all constructed line in Division and turn into the Situation Unit.

9. **Division/Group Communication Summary**

Function	RX Frequency	TX Frequency	Tone	Channel	Function	RX Frequency	TX Frequency	Tone	Channel
Tactical	168.0500	168.0500	123.0	1	Command	166.3375	170.3875	123..0	9
Command	168.1000	170.4500	123.0	7	Command	164.6750	169.8125	123.0	10
Command	169.5375	164.7125	123.0	8	Air to Ground				

Prepared by (Resource Unit Leader) <i>Karl DeLuca</i>	Approved by (Planning Section Chief) <i>W A Schwecke</i>	Date 8/31/2017	Time 2000
--	---	-------------------	--------------

DIVISION ASSIGNMENT LIST				1. Branch 2		2. Group N (Little Hogback)			
3. Incident Name Sapphire Complex				4. Operational Period Date: 09/01/2017 Time: 0600-2000					
5. Operations Personnel									
Operations Chief		Sam Gibbons, Randy McKenzie, Chris Lundgren, Jim Grant			Division/Group Supervisor		Matt White, Wes Duncan (T)		
Branch Director					Safety Officer		Craig Cowie		
6. Resources Assigned this Period									
Strike Team/Task Force/ Resource Designator		Last Shift	Leader		Number Persons	Trans. Needed	Drop Off PT./Time		Pick Up PT./Time
E-9 ENG3 Hart Ventures		9/9	Tim England		3	N	P Burg ICP/0600		P Burg ICP 2100
E-185 ENG3 Wildfire Resources		9/13	Reagan Farley		3	N	P Burg ICP/0600		P Burg ICP 2100
E-63 ENG6 High Desert		9/9	Tom Hanks		3	N	P Burg ICP/0600		P Burg ICP 2100
E-188 ENG6 XTREME		9/3	Josh Minshall (T)		3	N	P Burg ICP/0600		P Burg ICP 2100
E-126 WTS1 High Sierra Enterprise		9/5	Dale Iseman		1	N	P Burg ICP/0600		P Burg ICP 2100
E-79 WTT2 Mission Mtn Star		9/8	Scott Harmon		1	N	P Burg ICP/0600		P Burg ICP 2100
E-40 SKG3 Hall Wood Processing		9/16	Jeff Weer R&R 9/1-9/2, back 9/3		1	N	P Burg ICP/0600		P Burg ICP 2100
E-177 SKG2 MT. Fire Water		9/9	Carl Warren		2	N	P Burg ICP/0600		P Burg ICP 2100
E-244 DOZ2 Parke Logging w/ Lowboy		9/13	Scott Alder		2	N	P Burg ICP/0600		P Burg ICP 2100
E-243 EXCA T1 St. Onge Logging w/ Lowboy		9/13	Bob St. Onge		1	N	P Burg ICP/0600		P Burg ICP 2100
E-251 EXCA Bryant w/ Lowboy		9/14	Bryce Rasmussen		2	N	P Burg ICP/0600		P Burg ICP 2100
O-244 TFLD		9/7	Daniel White		1	N	P Burg ICP/0600		P Burg ICP 2100
O-459 TFLD		9/13	Patrick Kieran		1	N	P Burg ICP/0600		P Burg ICP 2100
O-460 TFLD		9/13	Todd Ayres (T)		1	N	P Burg ICP/0600		P Burg ICP 2100
O-322 EMPF		9/5	Terry Stevenson		1	N	P Burg ICP/0600		P Burg ICP 2100
O-218 EMTF		9/4	Johnna Hyde		1	N	P Burg ICP/0600		P Burg ICP 2100
7. Control Operations Utilize hose lays along handline and fire perimeter and mop up as needed. Mop up standards are based off your experience and knowledge of fuels, weather and topography to lower the probability of escape to acceptable levels. Mitigate snag hazards for public and firefighter safety.									
8. Special Instructions Coordinate with READ on resource protection needs. Gather GPS tracks of all constructed line in Division and turn into the Situation Unit. Specific hazard mitigation: <ul style="list-style-type: none"> Review hazard tree safety guidelines, page 22 of the IRPG. 									
9. Division/Group Communication Summary									
Function	RX Frequency	TX Frequency	Tone	Channel	Function	RX Frequency	TX Frequency	Tone	Channel
Tactical	166.7750	166.7750	123.0	5	Command	166.3375	170.3875	123.0	9
Command	168.1000	170.4500	123.0	7	Command	164.6750	169.8125	123.0	10
Command	169.5375	164.7125	123.0	8	Air to Ground				
Prepared by (Resource Unit Leader) <i>Karl Johnson</i>			Approved by (Planning Section Chief) <i>W.A. Schwecke</i>			Date 8/31/2017		Time 2000	

DIVISION ASSIGNMENT LIST				1. Branch 2		2. Group O (Hogback)					
3. Incident Name Sapphire Complex				4. Operational Period Date: 09/01/2017 Time: 0600-2000							
5. Operations Personnel											
Operations Chief		Sam Gibbons, Randy McKenzie, Chris Lundgren, Jim Grant			Division/Group Supervisor		Jeffrey Handel, Jon Devino (T)				
Branch Director					Safety Officer		Bill Altman				
6. Resources Assigned this Period											
Strike Team/Task Force/ Resource Designator		Last Shift	Leader		Number Persons	Trans. Needed	Drop Off PT./Time		Pick Up PT./Time		
C-52 T2IA Mississippi		9/4	John Giachelli		20	N	P Burg ICP/0600		P Burg ICP 2100		
E-123 ENG6 Buffalo Bird		9/4	Gregg Webster		3	N	P Burg ICP/0600		P Burg ICP 2100		
E-186 ENG6 Flat Rock		9/3	Cody Blair		3	N	P Burg ICP/0600		P Burg ICP 2100		
E-187 ENG6 North Idaho Fire		9/15	John Lautenslager R&R 8/31-9/1, back 9/2		3	N	P Burg ICP/0600		P Burg ICP 2100		
E-132 WTS2 Primmer Tender		9/2	Pat Holliday		1	N	P Burg ICP/0600		P Burg ICP 2100		
E-193 WTS2 Worland Tender		9/3	Rick Yeske		1	N	P Burg ICP/0600		P Burg ICP 2100		
E-178 SKDS Attack #2		9/9	Tim Heaps		2	N	P Burg ICP/0600		P Burg ICP 2100		
O-123 FAL1 Timber Trail		9/2	Sebastian & Litz		2	N	P Burg ICP/0600		P Burg ICP 2100		
O-408 TFLD		9/9	Jeremiah Hanks		1	N	P Burg ICP/0600		P Burg ICP 2100		
E-26.4 HEQB		9/1	Tyson Hunt R&R 9/2-9/3, Back 9/4		1	N	P Burg ICP/0600		P Burg ICP 2100		
O-63 EMTF		9/8	Robin Spurlock		1	N	P Burg ICP/0600		P Burg ICP 2100		
O-482 AEMF		9/14	Terry Williamson		1	N	P Burg ICP/0600		P Burg ICP 2100		
7. Control Operations Continue to mop up and patrol from H17 to DP54 and down to Upper Willow Creek. Provide support to DIV P as needed. Mop up standards are based off your experience and knowledge of fuels, weather and topography to lower the probability of escape to acceptable levels.											
8. Special Instructions Identify and map structures. Work with Liaison Officer to advise and coordinate with potentially affected private landowners. Gather GPS tracks of all constructed line in Division and turn into the Situation Unit. Specific hazard mitigation: <ul style="list-style-type: none"> Review Hazmat incident operations on pages 34 to 36 of the IRPG. Use the "Risk Management" process prior to engaging in suppression actions. 											
9. Division/Group Communication Summary											
Function	RX Frequency	TX Frequency	Tone	Channel	Function	RX Frequency	TX Frequency	Tone	Channel		
Tactical	168.6000	168.6000	123.0	3	Command	166.3375	170.3875	123.0	9		
Command	168.1000	170.4500	123.0	7	Command	164.6750	169.8125	123.0	10		
Command	169.5375	164.7125	123.0	8	Air to Ground						
Prepared by (Resource Unit Leader) <i>Mark DeLorme</i>				Approved by (Planning Section Chief) <i>D. Schwede</i>				Date 8/31/2017		Time 2000	

DIVISION ASSIGNMENT LIST			1. Branch		2. Group	
3. Incident Name Sapphire Complex			4. Operational Period Date: 09/01/2017 Time: 0600-2000			
5. Operations Personnel						
Operations Chief		Sam Gibbons, Randy McKenzie, Chris Lundgren, Jim Grant		Division/Group Supervisor		Russ Frei, Amanda Holt (T)
Branch Director				Safety Officer		Bill Altman
6. Resources Assigned this Period						
Strike Team/Task Force/ Resource Designator	Last Shift	Leader	Number Persons	Trans. Needed	Drop Off PT./Time	Pick Up PT./Time
C-66 HC2IA Grayback Forestry	9/8	Matthew Daugherty	20	N	P Burg ICP/0600	P Burg ICP 2100
C-20 HC2 Tri Cities Forestry	9/1	Alfredo Torres	20	N	P Burg ICP/0600	P Burg ICP 2100
E-27 ENG4 Weber Fire	9/6	Scott Haney	3	N	P Burg ICP/0600	P Burg ICP 2100
E-48 ENG4 Alder Creek E-13	9/8	Boyd Carr	3	N	P Burg ICP/0600	P Burg ICP 2100
E-12 ENG6 Cedar Fire	9/14	Ted Hunter	3	N	P Burg ICP/0600	P Burg ICP 2100
E-125 WTS1 R & J Granger Inc.	9/10	Ron Granger	1	N	P Burg ICP/0600	P Burg ICP 2100
E-194 WTS2 Bird Water #6	9/3	Todd Benedict	1	N	P Burg ICP/0600	P Burg ICP 2100
E-70 DOZ2 Madden Trucking	9/10	Moses Madden	2	N	P Burg ICP/0600	P Burg ICP 2100
E-179 SKDS Wildland Firefighters	9/10	Larry Pease	3	N	P Burg ICP/0600	P Burg ICP 2100
E-182 SKDS Attack #3	9/13	Chris Dosorcy	2	N	P Burg ICP/0600	P Burg ICP 2100
O-331 TFLD	9/4	Nou Yang	1	N	P Burg ICP/0600	P Burg ICP 2100
O-334 TFLD	9/7	Joe Jones	1	N	P Burg ICP/0600	P Burg ICP 2100
O-326 HEQB	9/5	Justin Harrell	1	N	P Burg ICP/0600	P Burg ICP 2100
O-349 HEQB	9/5	Jeremy Joseph (T)	1	N	P Burg ICP/0600	P Burg ICP 2100
E-3 AMBU Three Rivers	10/1	Westgard & Hagestad	2	N	P Burg ICP/0600	P Burg ICP 2100
O-217 EMTF	9/4	Paul Thomson	1	N	P Burg ICP/0600	P Burg ICP 2100
O-233 EMTF	9/4	Chris Carlott	1	N	P Burg ICP/0600	P Burg ICP 2100
Continued on following page						

7. Control Operations

Mop up and patrol from Scotchman's Gulch road west to the Wedge. Provide support to other Divisions as necessary. Continue to scout burnout operations west to Division Z break. Mop up standards are based off your experience and knowledge of fuels, weather and topography to lower the probability of escape to acceptable levels.

8. Special Instructions

Identify and map structures. Work with Liaison Officer to advise and coordinate with potentially affected private landowners. Gather GPS tracks of all constructed line in Division and turn into the Situation Unit.

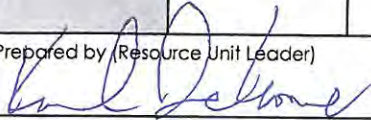
Specific hazard mitigation:

- Use the "Risk Management" process on pages 34 to 36 of the IRPG when engaging in suppression actions.
- Establish trigger points and reassess as needed.

9. Division/Group Communication Summary

Function	RX Frequency	TX Frequency	Tone	Channel	Function	RX Frequency	TX Frequency	Tone	Channel
Tactical	168.7250	168.7250	123.0	4	Command	166.3375	170.3875	123.0	9
Command	168.1000	170.4500	123.0	7	Command	164.6750	169.8125	123.0	10
Command	169.5375	164.7125	123.0	8	Command	171.0375	163.8250	123.0	11
					Air to Ground				

Prepared by (Resource Unit Leader)



Approved by (Planning Section Chief)



Date

8/31/2017

Time

2000

DIVISION ASSIGNMENT LIST				1. Branch 2		2. Group Z			
3. Incident Name Sapphire Complex				4. Operational Period Date: 09/01/2017 Time: 0600-2000					
5. Operations Personnel									
Operations Chief		Sam Gibbons, Randy McKenzie, Chris Lundgren, Jim Grant		Division/Group Supervisor		Vance Hazelton, Alan Carlson (T)			
Branch Director				Safety Officer		Jim Bartlett, J.D. Bauman (T)			
6. Resources Assigned this Period									
Strike Team/Task Force/ Resource Designator	Last Shift	Leader	Number Persons	Trans. Needed	Drop Off PT./Time	Pick Up PT./Time			
C-54 HC1 Blue Ridge IHC	9/4	Brian Frisby	21	N	P Burg ICP/0600	P Burg ICP 2100			
E-125 ENG3 Mountain Camel	9/8	Shawn Wippert	3	N	P Burg ICP/0600	P Burg ICP 2100			
E-33 ENG4 Dragon Fighters E-41	9/16	Levi Dufford (T) R&R 9/1-9/2, back 9/3	3	N	P Burg ICP/0600	P Burg ICP 2100			
E-30 ENG6 Red Truck Wildfire	9/15	Gene Mitchell R&R 8/31-9/1, back 9/2	3	N	P Burg ICP/0600	P Burg ICP 2100			
E-122 ENG6 Griz 1	9/8	Kurt Hennifer	3	N	P Burg ICP/0600	P Burg ICP 2100			
E-158 ENG6 Metal Works	9/8	Rick Manchester	3	N	P Burg ICP/0600	P Burg ICP 2100			
E-119 UTV Outback Fire 747318					P Burg ICP/0600	P Burg ICP 2100			
O-215 EMTF	9/5	Ray Mines	1	N	P Burg ICP/0600	P Burg ICP 2100			
7. Control Operations Continue to check fire spread above Rock Creek Road. Utilize aircraft as needed in Capron ad Sheep Gulch.									
8. Special Instructions Identify and map structures. Work with READ for specifications when working in and around Forest Service cabins. Gather GPS tracks of all constructed line in Division and turn into the Situation Unit. Specific hazard mitigation: <ul style="list-style-type: none"> Review the Wildland Urban Interface "watch out" situations on page 12 of the IRPG. Ensure aerial/ground ignition plans haven adequately developed and personnel have been briefed. 									
9. Division/Group Communication Summary									
Function	RX Frequency	TX Frequency	Tone	Channel	Function	RX Frequency	TX Frequency	Tone	Channel
Tactical	168.2500	168.2500	123.0	6	Command	166.3375	170.3875	123.0	9
Command	168.100	170.4500	123.0	7	Command	164.6750	169.8125	123.0	10
Command	169.5375	164.7125	123.0	8	Air to Ground				
Prepared by (Resource Unit Leader) <i>Karl Dewe</i>		Approved by (Planning Section Chief) <i>W.A. Schwede</i>			Date 8/31/2017		Time 2000		

DIVISION ASSIGNMENT LIST			1. Branch 2		2. Group Structure (LTL Hogback)				
3. Incident Name Sapphire Complex			4. Operational Period Date: 09/01/2017 Time: 0600-2000						
5. Operations Personnel									
Operations Chief		Sam Gibbons, Randy McKenzie, Chris Lundgren, Jim Grant		Division/Group Supervisor		Ron Roberts, Waylon Meek (T)			
Branch Director				Safety Officer		Jim Bartlett, J.D. Bauman (T)			
6. Resources Assigned this Period									
Strike Team/Task Force/ Resource Designator	Last Shift	Leader	Number Persons	Trans. Needed	Drop Off PT./Time	Pick Up PT./Time			
E-46 ENG3 Hart Ventures 414253	9/11	Wyatt Lawrence	3	N	P Burg ICP/0600	P Burg ICP 2100			
E-45 ENG4 Inland Forest Mgmt.	9/11	Terry McGovern	3	N	P Burg ICP/0600	P Burg ICP 2100			
E-124 ENG4 Outback Firefighting	9/6	Jim Wheeler	3	N	P Burg ICP/0600	P Burg ICP 2100			
E-189 ENG4 National Wildland Fire	9/3	Leenkun Baca	3	N	P Burg ICP/0600	P Burg ICP 2100			
E-133 WTS2 Butler Enterprises	9/8	Nick Dole	1	N	P Burg ICP/0600	P Burg ICP 2100			
E-40 SKG3 Eash	9/10	Ora Eash	2	N	P Burg ICP 0600	P Burg ICP 2100			
O-333 TFLD	9/5	Travis Wright	1	N	P Burg ICP/0600	P Burg ICP 2100			
7. Control Operations Protect structures in Upper Willow Creek drainage. Maintain structure protection equipment at Upper Willow and Marshall Creek structures. Provide support to adjacent Divisions as needed. Maintain IA readiness, backfill any structure protection needs with Engines from adjacent divisions.									
8. Special Instructions Identify and map structures. Work with Liaison Officer to advise and coordinate with potentially affected private landowners. Gather GPS tracks of all constructed line in Division and turn into the Situation Unit. Specific hazard mitigations: <ul style="list-style-type: none"> Review the Wildland Urban Interface "watch out" situations on page 12 of the IRPG. For IA, establish LCES and determine trigger points. 									
9. Division/Group Communication Summary									
Function	RX Frequency	TX Frequency	Tone	Channel	Function	RX Frequency	TX Frequency	Tone	Channel
Tactical	168.2000	168.2000	123.0	2	Command	166.3375	170.3875	123.0	9
Command	168.1000	170.4500	123.0	7	Command	164.6750	169.8125	123.0	10
Command	169.5375	164.7125	123.0	8	Air to Ground				

Prepared by (Resource Unit Leader) <i>Paul Johnson</i>	Approved by (Planning Section Chief) <i>W H Schwede</i>	Date 8/31/2017	Time 2000
---	--	-------------------	--------------

INCIDENT RADIO COMMUNICATIONS PLAN		1. Incident Name		2. Date/Time Prepared		3. Operational Period Date/Time		
		SAPPHIRE COMPLEX		8/31/2017 2000 PM		0600 -2000 9/01/2017		
4. Basic Radio Channel Utilization								
Mode: W=Wideband Analog, N=Narrowband Analog, D=Digital, M=Mixed								
Channel	Function	Frequency	Tone	Mode	Assignment	Remarks		
1	TAC 1	RX: 168.0500	123.0	N	DIV GOLF	Remember the "C" in LCES! Have a Sierra,Alfa,Foxtrot,Echo Day!		
		TX: 168.0500	123.0					
2	TAC 2	RX: 168.2000	123.0	N	STRUCTURE PROTECTION			
		TX: 168.2000	123.0					
3	TAC 3	RX: 168.6000	123.0	N	DIV OSCAR			
		TX: 168.6000	123.0					
4	TAC 4	RX: 168.7250	123.0	N	DIV PAPA			
		TX: 168.7250	123.0					
5	TAC 5	RX: 166.7750	123.0	N	DIV NOVEMBER			
		TX: 166.7750	123.0					
6	TAC 6	RX: 168.2500	123.0	N	DIV ZULU/NIGHT SHIFT			
		TX: 168.2500	123.0					
7	CMD 7	RX: 168.1000	123.0	N	ALL DIVS			Use the
		TX: 170.4500	123.0					REPEATER
8	CMD 8	RX: 169.5375	123.0	N	ALL DIVS			that works
		TX: 164.7125	123.0					best for
9	CMD 9	RX: 166.3375	123.0	N	ALL DIVS	YOU!		
		TX: 170.3875	123.0			AIR AMBULANCE		
10	CMD 10	RX: 164.6750	123.0	N	ALL DIVS	Lolo Forest Repeater Net to Missoula Dispatch IA		
		TX: 169.8125	123.0			Communicate with Air Attack		
11	CMD 11	RX: 171.0375	123.0	N	ALL DIVS	Helicopter Operations		
		TX: 163.8250	123.0			FOR EMERGENCY GROUND TO AIR INITIAL CONTACT		
12	TAN	RX: 155.3400	156.7	N	LIFE FLIGHT VMED 28			
		TX: 155.3400	156.7					
13	QUIGG RPT	RX: 164.7000	131.8	N	IA			
		TX: 164.1000	131.8					
14	A/G PRIMARY	RX: 169.1500		N	AIR ATTACK			
		TX: 169.1500						
15	A/G SECONDARY	RX: 169.0875		N	HELICOPTER OPS			
		TX: 169.0875						
16	AIR GUARD	RX: 168.6250	110.9	N	ALL			
		TX: 168.6250	110.9					
5. Prepared by (Communications Unit)								
Jeannie Nez Perce, COML 								

205 IA RADIO COMMUNICATIONS PLAN		1. Incident Name SAPPHIRE COMPLEX		2. Date/ Time Prepared 8/31/2017 20:00 PM		3. Operational Period Date/Time 9/1/2017 0600 - 2000	
Radio Type	CH	Function	Frequency	Tone	Mode	Assignment	Remarks
KING	1	FOREST TAC 1	RX: 167.1125		N	LOLO TAC	
NIFC			TX: 167.1125	110.9			
KING	2	FOREST TAC 2	RX: 167.6250		N	LOLO TAC	
NIFC			TX: 167.6250	131.8			
KING	3	TAN	RX: 155.3400		N	LIFE FLIGHT	
NIFC			TX: 155.3400	156.7		VMED 28	
KING	4	WHITE	RX: 155.2800		N	GROUND	
NIFC			TX: 155.2800	156.7		AMBULANCE	
KING	5	RED	RX: 154.0700		N	STATE FIRE	Fire Mutual Aid
NIFC			TX: 154.0700	156.7			
KING	6	WEATHER	RX: 162.4000		N	WEATHER	
NIFC			TX: 162.4000				
KING	7	CMD 7	RX: 168.1000		N	ALL DIVS	
NIFC			TX: 170.4500	123.0			
KING	8	CMD 8	RX: 169.5375		N	ALL DIVS	
NIFC			TX: 164.7125	123.0			
KING	9	CMD 9	RX: 166.3375		N	ALL DIVS	
NIFC			TX: 170.3875	123.0			
KING	10	CMD 10	RX: 164.6750		N	ALL DIVS	
NIFC			TX: 169.8125	123.0			
KING	11	QUIGG RPT	RX: 164.7000		N	IA	Lolo Forest Repeater to Missoula Dispatch
NIFC			TX: 164.1000	131.8			IA
KING	12	EAST DIR	RX: 164.7000		N	IA	Lolo Forest Direct Net to Missoula Dispatch
NIFC			TX: 164.7000	123.0			IA
KING	13	EAST A/G	RX: 166.5000		N	IA	Lolo Forest A/G
NIFC			TX: 166.5000				
KING	14	BITTERROOT A/G	RX: 168.3875		N	IA	Bitterroot Forest A/G
NIFC			TX: 168.3875				
KING	15	MT DNRC A/G	RX: 166.9000		N	IA	Montana DNRC A/G
NIFC			TX: 166.9000				
KING	16	AIRGUARD	RX: 168.6250		N	All	FOR EMERGENCY GROUND TO AIR
NIFC			TX: 168.6250	110.9			INITIAL CONTACT

5. Prepared by (Communications Unit) **Jeannie Nez Perce**, COML NOTE: To use tones to control receiver interference noise turn squelch knob all the way counter clockwise.
 Controlled Unclassified Information//Basic

MEDICAL PLAN (ICS 206 WF)

Incident/Project Name		1. Operational Period						
Sapphire Complex		Date/Time 9/1/17 DAY/NIGHT SHIFT						
2. Ambulance Services								
Name	Complete Address	Phone & EMS Frequency	Advanced Life Support (ALS)					
			Yes	No				
Three Rivers Ambulance	Assigned to incident	Command	X					
Missoula Emergency Services Northern part of fire	1200 Burlington Ave., Missoula, MT	911	X					
Phillipsburg Ambulance Southern part of the fire	310 Sansome St., Phillipsburg, MT	406-859-3251		X				
Drummond Ambulance Middle part of fire	147 Frontage Rd., Drummond, MT	406-859-3251		X				
3. Air Ambulance Services								
Name	Phone	Type of Aircraft & Capability						
Life Flight Network (Missoula or Butte)	911 or 406-829-7070	ALS with Night vision, A/G Freq Tan (18 mins from Missoula to Phillipsburg)						
Two Bear Air Rescue (Kalispell)	911 or 406-829-7070	Night Vision, 400 lbs hoist, extraction only, Freq Tan (60 mins from Kalispell to Phillipsburg)						
4. Hospitals								
Name Complete Address	GPS Datum – WGS 84 Coordinate Standard Degrees Decimal Minutes DD° MM.MMM' N - Lat DD° MM.MMM' W - Long		Travel Time Air Gnd		Phone	Helipad Yes No		Level of Care Facility
	Lat:	N 32 49.373	N/A	5 mins from ICP	406-859-3271	X		Critical Access Hospital
Long:	W 109 44.117							
VHF:	White 155.280							
St. Patrick's Hospital 500 W. Broadway Missoula, MT	Lat:	N 46 52.524	45min from ICP	90 min from ICP	406-543-7271	X		Level 2 Trauma Center (Highest Trauma Care Facility in Area)
	Long:	W 113 59.969						
	VHF:	White 155.280						
Community Medical Center 2827 Ft. Missoula Rd. Missoula, MT	Lat:	N 46 50.909	45 min from ICP	90 min from ICP	406-728-4100	X		Community Trauma Hospital
	Long:	W 114 2.865						
	VHF:	White 155.280						
Community Hospital of Anaconda 401 W Pennsylvania Anaconda, MT	Lat:	N 46 07.969	20 min from ICP Air	1 hrs from ICP	406-563-8585	X		Community Trauma Hospital
	Long:	W 112 57.456						
	VHF:	White 155.280						
5. Division Branch Group			Area Location Capability					
DIV G (GOAT)			Point of Contact:					
			EMS Responders & Capability:			Brian Williamson-- EMTF		
			Equipment Available on Scene:			BLS Trauma kit, O2, SKED, Epi, Sager Splint		
			Medical Emergency Channel:			Command		
			ETA for Ambulance to Scene:			1 hr from Missoula		
			Air: From Helibase			15 min		
			Approved Helispot:			H-4		
			Lat:			N 46 40.553		
Long:			W 113 35.817					

MEDICAL PLAN (ICS 206 WF)

DIV G (SLIDEROCK)	Point of Contact:	
	EMS Responders & Capability:	UNSTAFFED
	Equipment Available on Scene:	
	Medical Emergency Channel:	Command
	ETA for Ambulance to Scene:	2.5 hrs from Drummond or Phillipsburg
	Air: From Helibase	15 min
	Approved Helispot:	H-12
	Lat:	N 46 36.312
	Long:	W 113 32.327
DIV N	Point of Contact:	
	EMS Responders & Capability:	Terry Stevenson - EMPF Johnna Hyde – EMTF
	Equipment Available on Scene:	ALS Kit and meds, O2, Backboard BLS Kit, O2, Backboard
	Medical Emergency Channel:	Command
	ETA for Ambulance to Scene:	1 hr from DP-49 Three Rivers Ambulance
	Air: From Helibase	15 min
	Approved Helispot:	H-14 H-15 H-16 Miner Mud
	Lat:	N 46 31.110 N 46 29.219 N 46 26.120 N 46 24.102
	Long:	W 113 30.650 W 113 30.981 W 113 30.920 W 113 30.278
DIV O	Point of Contact:	
	EMS Responders & Capability:	Robin Spurlock - EMPF Terry Williamson - AEMF
	Equipment Available on Scene:	ALS Kit, O2, AED, SKED Trauma kit, O2,
	Medical Emergency Channel:	Command
	ETA for Ambulance to Scene:	30 min from DP-49 Three Rivers Ambulance
	Air: From Helibase	15 min
	Approved Helispot:	H-17 H-18
	Lat:	N 46 22.493 N 46 21.493
	Long:	W 113 31.790 W 113 32.538
DIV P	Point of Contact:	
	EMS Responders & Capability:	Paul Thomson – EMTF & Chris Carlott – EMTF
	Equipment Available on Scene:	BLS Trauma kit, O2, AED, SKED
	Medical Emergency Channel:	Command
	ETA for Ambulance to Scene:	30 min from DP-49 Three Rivers Ambulance
	Air: From Helibase	15 min
	Approved Helispot:	H-18 H-19
	Lat:	N 46 21.493 N 46 21.547
	Long:	W 113 32.538 W 113 33.252
DIV Z	Point of Contact:	
	EMS Responders & Capability:	Ray Mines – EMTF
	Equipment Available on Scene:	BLS Trauma kit, O2, SKED
	Medical Emergency Channel:	Command
	ETA for Ambulance to Scene:	30 min from ICP to DP-49 Three Rivers Ambulance
	Air: From Helibase	15 min
	Approved Helispot:	H-21
	Lat:	N 46 24.623
	Long:	W 113 42.064
NIGHT SHIFT	Point of Contact:	
	EMS Responders & Capability:	Dan Jimenez – EMTF
	Equipment Available on Scene:	Trauma kit, Backboard, O2, Epi
	Medical Emergency Channel:	Command
	ETA for Ambulance to Scene:	30 min from ICP to DP-49 Three Rivers Ambulance
	Air: From Missoula	15 min
	Approved Helispot:	H-21
	Lat:	N 46 24.623
	Long:	W 113 42.064

MEDICAL PLAN (ICS 206 WF)

PHILIPSBURG ICP	Point of Contact:	
	EMS Responders & Capability:	P. Miller MEDL & D. Poxleitner MEDL (t) & S. Maxwell IMST
	Equipment Available on Scene:	ALS Kit, Meds, Trauma kit, Epi, Albuterol, Nitro, AED
	Medical Emergency Channel:	Command
	ETA for Ambulance to Scene:	10 minutes
	Air: From Missoula	45 minutes from Missoula
	Approved Helispot:	
	Lat:	
	Long:	

Upon occurrence of a "Major Medical" or accident involving significant injury on the fire line, the closest DIVS should respond directly to the scene to take control of the situation and direct necessary actions. If the DIVS is unavailable, the nearest fire line supervisor or leader needs to take charge.

1. Clear all radio traffic on the Incident Command Channel--use to coordinate response with the MEDICAL UNIT LEADER via Communications. **DO NOT USE NAMES.** Identify: a) The on-scene Point Of Contact (i.e. TFLD Smith); b) Describe the nature of the accident.
2. Obtain and facilitate nearest EMT to the scene. Identify to Communications medical personnel on site.
3. IDENTIFY nature of the problem, # of patients, status, vitals & location. (GPS if possible) Request additional resources if needed.
4. Coordinate and facilitate appropriate transportation for injured with Medical Unit EMT in charge of patient(s).
5. Remove all unnecessary personnel from the scene.
6. Secure scene, identify witnesses for later investigation. Document all information received and transmitted on the radio or phone.
7. Inform Communications of any changes in the on scene for Point Of Contact or medical personnel as they occur.

LIFE SAFETY IS THE NUMBER 1 PRIORITY ON THIS INCIDENT!

6. Prepared By (Medical Unit Leader)	7. Date/Time	8. Reviewed By (Safety Officer)	9. Date/Time
Dave Poxleitner, MEDL (t) <i>Dave Poxleitner</i>	8/31/17 1900	Jim Bartlett SOF2 or J.D. Bauman SOF (t) <i>Jim Bartlett</i>	8/31/17 1900

AIR OPERATIONS SUMMARY

Prepared By: Hugh Carson

Prepared Date/Time: 8/31/2017 2100

1. INCIDENT NAME:		2. OPERATIONAL PERIOD DATE:		START TIME:	END TIME:	SUNRISE:	SUNSET:
Sapphire Complex & Meyers		9/1/2017		600	2200	0649 Helibase	2016 Helibase
<p>3. REMARKS (Safety Notes, Hazards): Shared ATGS and helicopter resources between Meyers and Sapphire. If conflicting needs, the two Team Planning Ops will resolve and inform their respective AOBs of priorities among incidents.</p> <p>** ATGS Ordering: ABRO will take initial order of ATGS from Line OPS and call AOBs or ASGS who will handle initial call/order to ATGS Coord in MSO; if relief needed, same procedure, etc. Secondary A/A used as assigned by Air Attack. Secondary A/G used as needed. HOTSY BUCKET WASHOUT: (1) Beaverhead-Deerlodge (Meyers and Sapphire): <i>When conducting bucket/snorkel work with Helicopters, ensure that only one water source is used at a time. If utilizing multiple water sources, ensure buckets/snorkels are washed between the use of different sources.</i> (2) LOLO PART OF SAPPHIRE: Required when switching from one drainage to another (3) NEVER DIP FROM CLARK FORK.</p>							
4. READY ALERT AIRCRAFT		<p>Incident Medevac Resources: 407MC Bell 407; 7HE AS350B3 Litter Kit at Meyers HB SHORTHAIL Order via A/C Desk. ** 401HQ @ Lincoln, MT 73BH @ Yellowstone NP ** Hoist/INVG: Two Bear Air Civilian A/C Medical (Tan): 150.3400N Tone 156.7 A/G Hospital (White): 155.2800</p>					
5. Airspace Information:		<p>Sapphire TFR # 7/3065 Freq: 118.2250 Radius: POLYGON Altitude: 12,000 MSL</p> <p>Meyers TFR # 7/4363 Freq: 121.0750 Radius: POLYGON Altitude: 11,000</p>					
6. PERSONNEL		NAME		PHONE #		7. FREQUENCIES	
6a. Sapphire Complex						VHF-AM	
Air Ops Branch Director	Sapphire	Hugh Carson	970-778-7078	Sapphire A/G PRIMARY A/G 1		169.1500N	
Air Ops Branch Director (Recertification)		Vince Welbaum	720-413-2537	Sapphire A/G SECOND A/G 2		169.08750N	
Air Support Group Supv	Sapphire	Carl Richie	208-446-4376	Sapphire A/A FW (TFR Freq)		118.2250	
Air Tactical Group Supv		AS Needed		Sapphire A/A RW		123.4000	
Sapphire Air Ops Yurt Phone		AOBD/ASGS	406-859-9041				
6b. Meyers Complex						VHF-FM	
Air Ops Branch Director	Meyers	Bill Sprauer	406-859-3117	Meyers A/G PRIMARY (A/G 1)		169.2000	
Air Support Group Supv	Meyers	Henry Gilliland	720-413-2537	Meyers A/G SECOND (A/G 2)		164.7500	
Air Tactical Group Supv		AS Needed		Meyers A/A FW (TFR Freq)		121.0750	
Meyers Air Ops Yurt Phone		AOBD/ASGS	406-859-9129	Meyers A/A RW		126.6250	
6c. Common Ops Contacts				Command - Helibase to ATGS		168.075 Rx - 170.425 Tx 114.8	
Helibase Manager - Meyers HB		Lee Stewart	406-859-9133	7c. Common Freqs			
Helibase Manager (T) - Meyers HB		Tim Lanterman	386-292-4049	Deck		163.1000	
Deck Coordinator		Billy Trefon	907-294-4121	Takeoff/Landing (TOLC)		172.6500N	
Meyers Helibase Trailer Phone			406-859-9133	National Fit Follow		168.6500 Tx/Rx 110.9	
Mixmaster Miner Mud		Marty Posey	575-746-7320	Air Guard		168.625 TX 110.9	
Missoula (Lolo NF)		A/C Desk	406-829-7060	DNRC A/G (Yellow)		166.9000N or 151.2200 Rx/Tx	
Dillon (B-D NF)		A/C Desk	406-683-3975/3827				

Hugh Carson 8/31/17

Signature:



“A Night on the Town”

The fire season has been long and tiring. You and a few coworkers decide that since you are off-shift and the camp is not closed, a trip to the nearby watering hole is just what you needed. You shed your fire clothes and take off. The local bar is really hopping, but you manage to find a table. After a few drinks you get into a friendly shouting match with one of the locals. Around 1:00 am you make it back to camp. No harm – no foul, right?

Uh, not so fast. First off, you drove the agency vehicle to a bar, which is generally prohibited. Second, this IMT and most agencies have written policies of no alcohol consumption while assigned to an incident. Since you returned at 1:00 am, work-to-rest ratios cannot be met, which becomes a safety issue. And, by-the-way, the friendly little shouting match you had with one of the locals was observed by several other patrons, who recognized you as part of the fire organization. One individual who wasn't amused decided to call the Regional Office and voice their concerns.

Think Before You Act

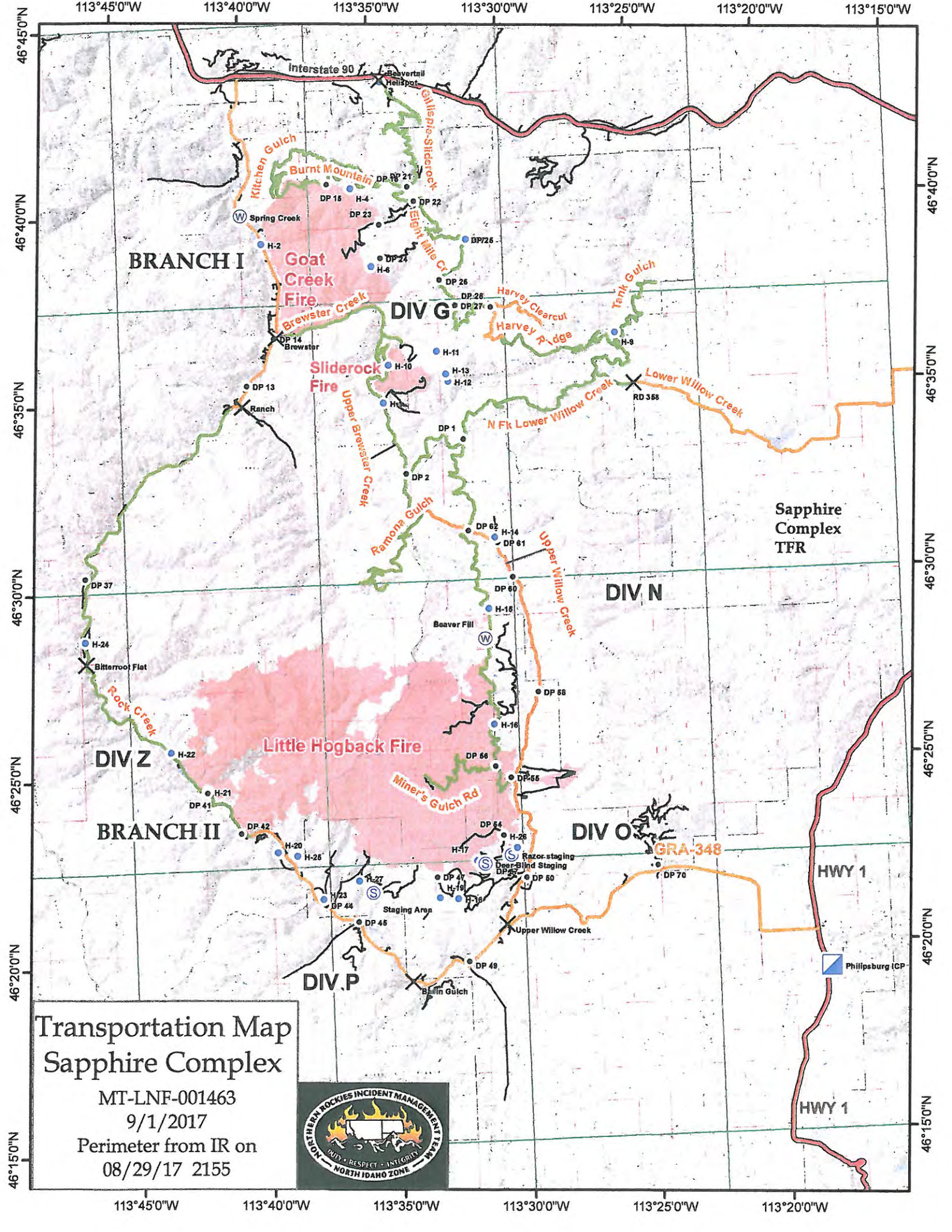
Dale Tribby
Human Resource Specialist

Sapphire Complex: ICP Phone List

Mike Almas North Idaho IMT2

As of 8/28/2017 2000

Communications	406-859-9051
Incident Commander	406-859-9043
Human Resources	406-859-9177
PIO-private	406-859-9172
PIO-private	406-859-9170
PIO-public	406-540-3589
Operations/Safety	406-859-9041
Operations/Safety	406-859-9042
Plans	406-859-9049
Situation Unit	406-859-9044
Check-in/Demob	406-859-9048 FAX-9047
Finance	406-859-9045
Logistics	406-859-9180
Ordering	406-859-9171 FAX-9174
Supply	406-859-9175
Medical	406-859-9052
Ground Support	406-859-9053



Transportation Map Sapphire Complex

MT-LNF-001463

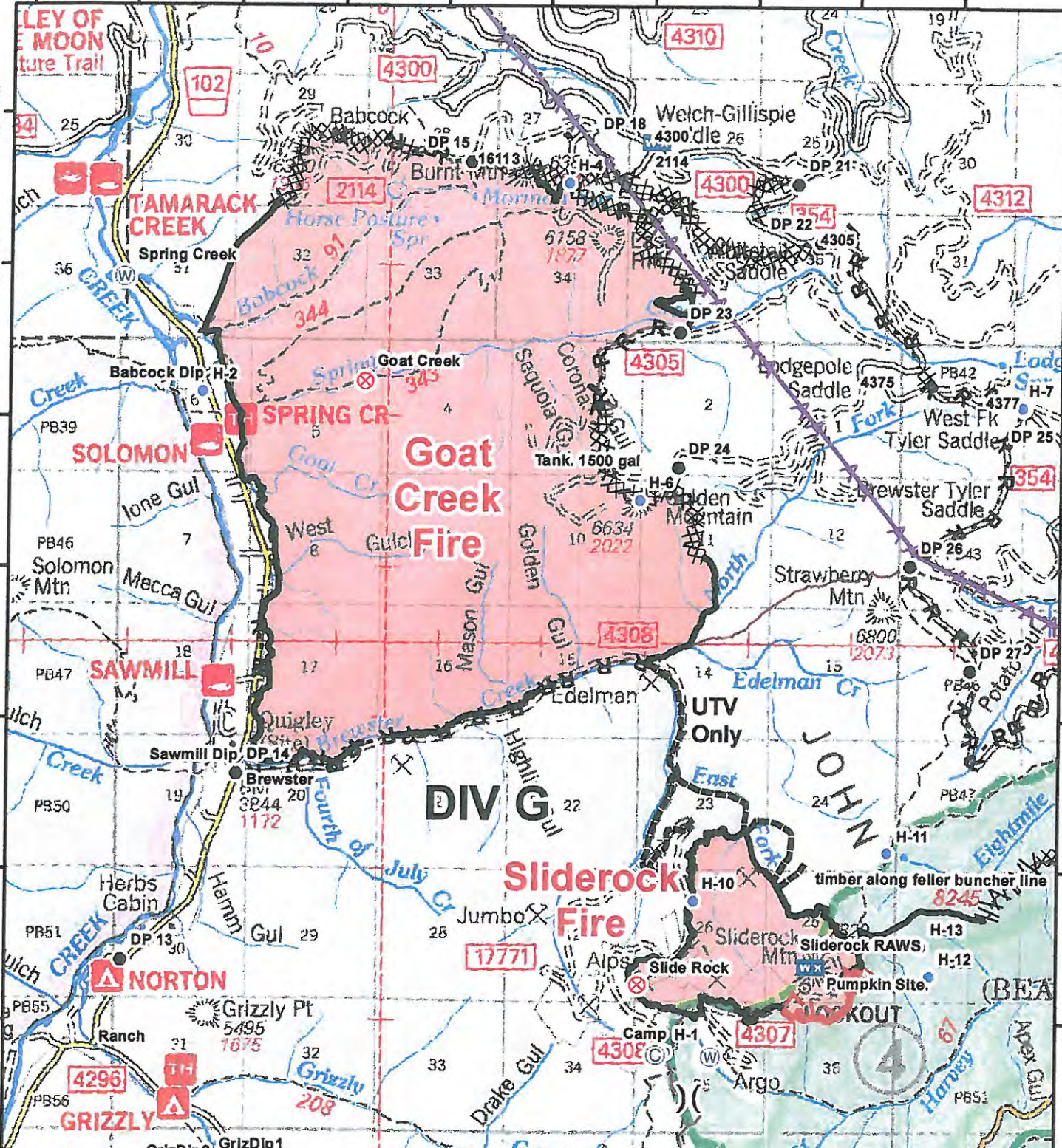
9/1/2017

Perimeter from IR on

08/29/17 2155



113°41'0"W 113°40'0"W 113°39'0"W 113°38'0"W 113°37'0"W 113°36'0"W 113°35'0"W 113°34'0"W 113°33'0"W 113°32'0"W



IAP MAP
SAPPHIRE COMPLEX
BRANCH I
GOAT CREEK FIRE
SLIDEROCK FIRE

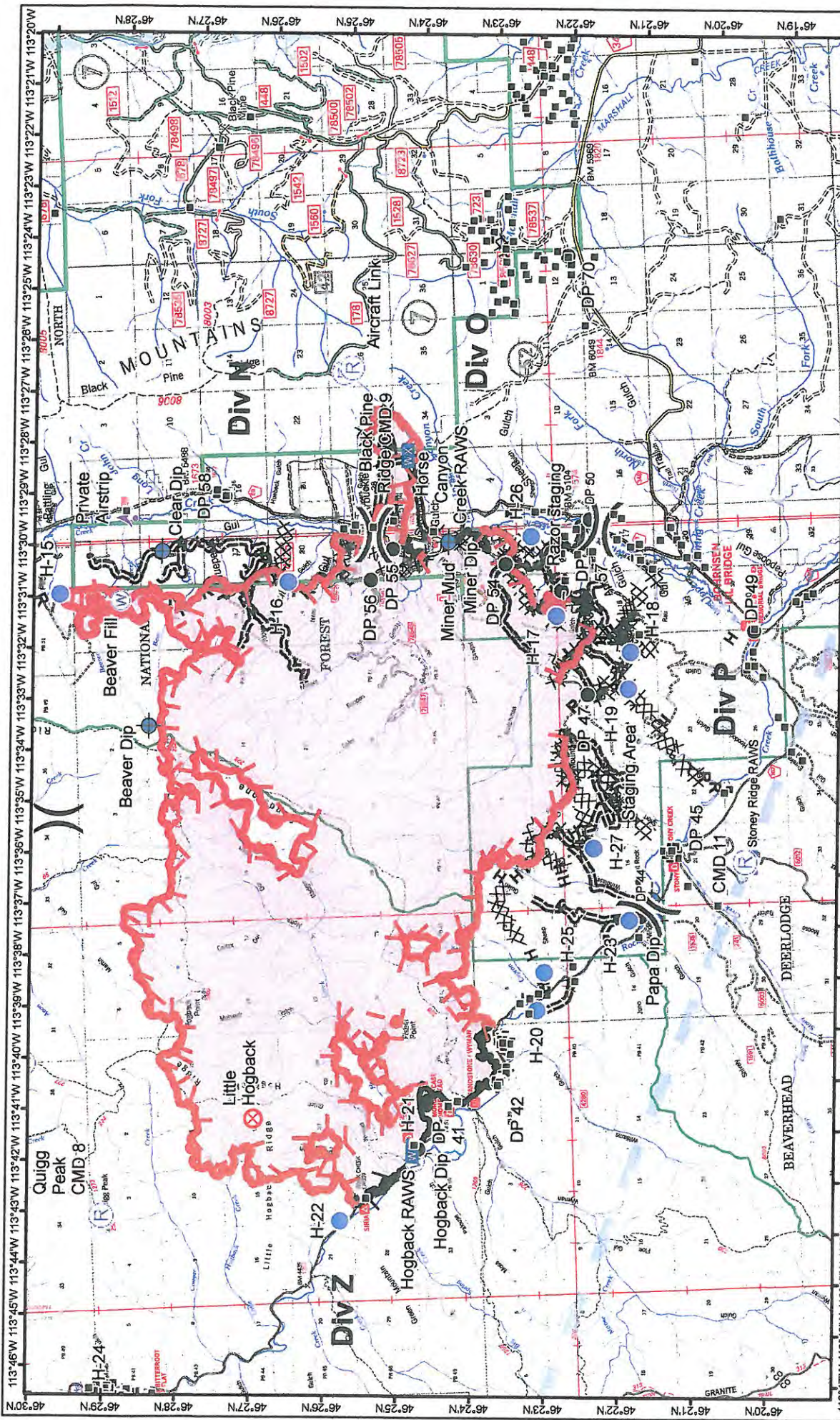
MT-LNF-001463
 9/1/2017
 Fire Perimeter from IR 8/29/2017 2155
 Approx Fire Acres
 Goat Creek 8,305
 Sliderock 901

	Aerial Hazard		Completed Line
	Branch Break		Uncontrolled Fire Edge
	Camp		Completed Dozer Line
	Division Break		Aerial Hazard
	Drop Point		Planned Fire Line
	Fire Origin		Road as Completed Line
	Helibase		Mobile Weather Unit
	Helispot		Repeater
	Incident Command Post		Water Source

0 0.5 1 2 3 4 5 Miles



113°41'0"W 113°40'0"W 113°39'0"W 113°38'0"W 113°37'0"W 113°36'0"W 113°35'0"W 113°34'0"W 113°33'0"W 113°32'0"W



Little Hogback Fire Incident Action Plan Map

Sapphire Complex
 MT-LNF-001463
 09/01/2017

Fire perimeter as of
 08/29/2017 2155
 30,929 ac. approx.

0 0.5 1 2 3 4 Miles

N

Legend:

- Structure
- Division Break
- Aerial Hazard
- Dip Site
- Drop Point
- Fire Origin
- Helispot
- Mobile Weather Unit
- Repeater
- Retardant/Mud Pit
- Water Source
- Completed Line
- Uncontrolled Fire Edge
- Completed Dozer Line
- Completed Burnout
- H - H Completed Hand Line

NORTHERN CALIFORNIA INCIDENT MANAGEMENT TEAM
 CALIFORNIA FIRE SERVICE ASSOCIATION
 NORTH IDAHO FIRE SERVICE ASSOCIATION

1. Incident Name

2. Operational Period (Date/Time)

UNIT LOG (CONT.)
ICS 214

From: To:

6. Activity Log (Continue on Reverse)

TIME

NOTABLE ACTIVITIES / EVENTS

7. Prepared by:

Date/Time:

INCIDENT WITHIN AN INCIDENT PLAN (IWIP)

The primary goal of this **Incident within an Incident Plan** is to provide “YOU”, the incident personnel guidelines necessary to *locate, triage, extricate, treat, and transport* all accident patients in as quick a manner as possible.

“YOU” or the closest operationally qualified resource (DIVS, SOFR, TFLD, ENGB, CRWB, etc.) will initially oversee the emergency and activation of the **IWIP** as the Incident Commander. Accidents or “Incidents Within an Incident” happen rapidly and require good, calm initial assessments and decisions to handle the situation.

Radio communication will be on the Command frequency and will take priority over other radio traffic. **Names and crew designators of injured or deceased individuals will not be given over the radio.** Deceased individuals and their equipment are not to be moved, except to accomplish rescue work or to protect the health and safety of others.

Standards for Initial Response to IWI on the Fire

“YOU” or closest operationally qualified resource will become IC of the IWI (DIVS, SOFR, TFLD, ENGB, CRWB, etc.) until more qualified help arrives. Proper assessment and communicating the emergency is critical to getting the right resources heading to your location from the start!

- Notify your direct line supervisor or DIVS, and EMT’s to request medical assistance.
- Contact communications and oversee medical emergency response
 - Use the Medical Incident Report (9-Line) found in the Med Plan (ICS-206 WF) or in the 2014 IRPG (page 108-109) to provide information to communications.
- Transfer command to higher level qualification as needed.
 - If transfer of command occurs announce clearly to communications and all resources.

At no time during the incident/fatality or evacuation process will the name of the victim(s), tail number, engine number, or crew name be transmitted.

Green:	Minor, non-life threatening.
Yellow:	Potentially life threatening needs transport.
Red:	Life threatening.

Medical Incident Report

FOR ALL MEDICAL EMERGENCIES: IDENTIFY ON SCENE INCIDENT COMMANDER BY NAME AND POSITION AND ANNOUNCE "MEDICAL EMERGENCY" TO INITIATE RESPONSE FROM IMT COMMUNICATIONS/DISPATCH.

Use items one through nine to communicate situation to communications/dispatch.

1. CONTACT COMMUNICATIONS/DISPATCH

Ex: "Communications, Div. Alpha. Stand-by for Priority Medical Incident Report." (If life threatening request designated frequency be cleared for emergency traffic.)

2. INCIDENT STATUS: Provide incident summary and command structure.

Nature of Injury/Illness		<i>Describe the injury (Ex: Broken leg with bleeding)</i>
Incident Name		<i>Geographic Name + "Medical" (Ex: Trout Meadow Medical)</i>
Incident Commander		<i>Name of IC</i>
Patient Care		<i>Name of Care Provider (Ex: EMT Smith)</i>

3. INITIAL PATIENT ASSESSMENT: Complete this section for each patient. This is only a brief, initial assessment. Provide additional patient info after completing this 9 Line Report.

Number of Patients:	Male / Female	Age:	Weight:
Conscious? <input type="checkbox"/> YES <input type="checkbox"/> NO = MEDEVAC!			
Breathing? <input type="checkbox"/> YES <input type="checkbox"/> NO = MEDEVAC!			
Mechanism of Injury: <i>What caused the injury?</i>			
Lat/Long (Datum WGS84) <i>Ex: N 40° 42.45' x W 123° 03.24'</i>			

4. SEVERITY OF EMERGENCY, TRANSPORT PRIORITY

SEVERITY	TRANSPORT PRIORITY
<input type="checkbox"/> URGENT-RED Life threatening injury or illness. <i>Ex: Unconscious, difficulty breathing, bleeding severely, 2° – 3° burns more than 4 palm sizes, heat stroke, disoriented.</i>	Ambulance or MEDEVAC helicopter. Evacuation need is IMMEDIATE.
<input type="checkbox"/> PRIORITY-YELLOW Serious Injury or illness. <i>Ex: Significant trauma, not able to walk, 2° – 3° burns not more than 1-2 palm sizes.</i>	Ambulance or consider air transport if at remote location. Evacuation may be DELAYED.
<input type="checkbox"/> ROUTINE-GREEN Not a life threatening injury or illness. <i>Ex: Sprains, strains, minor heat-related illness.</i>	Non-Emergency. Evacuation considered Routine of Convenience.

5. TRANSPORT PLAN:

Air Transport: (Agency Aircraft Preferred)

<input type="checkbox"/> Helispot	<input type="checkbox"/> Short-haul/Hoist	<input type="checkbox"/> Life Flight	<input type="checkbox"/> Other
Ground Transport:			
<input type="checkbox"/> Self-Extract	<input type="checkbox"/> Carry-Out	<input type="checkbox"/> Ambulance	<input type="checkbox"/> Other

6. ADDITIONAL RESOURCE/EQUIPMENT NEEDS:

<input type="checkbox"/> Paramedic/EMT(s)	<input type="checkbox"/> Crew(s)	<input type="checkbox"/> SKED/Backboard/C-Collar
<input type="checkbox"/> Burn Sheet(s)	<input type="checkbox"/> Oxygen	<input type="checkbox"/> Trauma Bag
<input type="checkbox"/> Medication(s)	<input type="checkbox"/> IV/Fluid(s)	<input type="checkbox"/> Cardiac Monitor/AED
<input type="checkbox"/> Other (i.e. splints, rope rescue, wheeled litter)		

7. COMMUNICATIONS:

Function	Channel Name/Number	Receive (Rx)	Tone/NAC *	Transmit (Tx)	Tone/NAC *
<i>Ex: Command</i>	<i>Forest Rpt, Ch. 2</i>	<i>168.3250</i>	<i>110.9</i>	<i>171.4325</i>	<i>110.9</i>
COMMAND					
AIR-TO-GRND					
TACTICAL					

*(NAC for digital radio system)

8. EVACUATION LOCATION:

Lat/Long (Datum WGS84) <i>EX: N 40 42.45' x W 123 03.24'</i>	
Patient's ETA to Evacuation Location:	
Helispot/Extraction Size and Hazards:	

9. CONTINGENCY:

Considerations: <i>If primary options fail, what actions can be implemented in conjunction with primary evacuation method? Be thinking ahead...</i>	REMEMBER: Confirm ETA's of resources ordered Act according to your level of training Be Alert. Keep Calm. Think Clearly. Act Decisively.
--	---