

# **RICE RIDGE FIRE**

***Day Operational Period 0700—2100***

## **Protection From Cold and Flu**

The most important thing to remember during cold and flu season is to protect yourself against these germs when you are around other people. Viruses are passed by contact between people, so be sure to wash your hands often, get your yearly flu vaccine, take care of your body, and avoid people that you know are sick. Try to avoid touching your face as much as possible, since that is how most respiratory germs enter your body.

### **What Really Makes You Sick?**

The truth is the flu and the common cold are caused by viruses. There are over 200 viruses that cause the symptoms that we refer to as the common cold. Rhinoviruses cause a majority of colds, but they can be caused by coronaviruses, enteroviruses and others as well. Because there are so many viruses that cause these symptoms, there may never be a cure for the common cold. The flu, on the other hand, is caused by the influenza virus.

### **Why We Get Sick When It's Cold Outside**

People get sick more often in the winter because they are exposed to each other more than in the summer. When it is cold outside, people tend to stay inside and are more likely to spread germs to one another. With so many people in such close contact, the likelihood of passing germs is much higher when it is cold outside than when it is warm and people are outdoors. When it is cold outside, the air is drier both outdoors and inside (where people have their heaters on), which may make it easier for germs to pass from one person to another. But it is not the cold weather that causes the cold; it just might make it easier to spread the virus.



IAP



**Sunday  
September 17  
2017**

**Rice Ridge  
MT-LNF-001464  
767010 P1K8ND**

**Liberty  
MT-FHA-000105  
PAK5M8**

INCIDENT OBJECTIVES	1. Incident Name Rice Ridge Fire	2. Date Sept 16, 2017	3. Time 2000
<b>4. Operational Period: 09/17/2017 Day</b>			
<p><b>5. General Control Objectives for the Incident (include alternatives)</b>  <b><u>Commander's Intent</u></b>  <b>PURPOSE:</b> To manage risk in all incident actions.  <b>TASK:</b> Ensure that all incident actions reflect a commitment to aviation, responder, and public safety through using the risk management process outlined in the IRPG, adherence to the 10 standard firefighting orders, mitigation of the 18 situations that shout watch out and LCES. If you cannot mitigate a tactical hazard to an acceptable level of risk, do not implement the corresponding tactical action until such time as the risk can be satisfactorily mitigated before re-engaging. Ensure that Leader's Intent is clearly communicated and understood.  <b>OUTCOME:</b> Neither responders nor publics have been seriously injured or killed.</p> <p><b><u>Operational Objectives</u></b>  Implementation of the following operational objectives is to be applied and accomplished only through managing risk to best assure firefighter safety.</p> <ol style="list-style-type: none"> <li>1. Execute perimeter control strategies utilizing direct and indirect tactics, when applicable use point or zone protection tactics to minimize impacts to values at risk and firefighter exposure.</li> <li>2. Provide Point/Zone Protection minimizing fire impacts to: <ol style="list-style-type: none"> <li>a. Social/economic values including primary structures, public and private (town of Seeley Lake, Double Arrow, Coopers Lake, Kozy Corner, and other Upper Blackfoot communities), and hard-asset infrastructure.</li> <li>b. Monture Creek Guard Station and other public recreation sites as well as private undeveloped lands.</li> </ol> </li> <li>3. Provide Initial Attack on DNRC protected lands under the established TFR. On the Lolo National Forests, coordinate support to forest IA response within the TFR. Outside the TFR, provide support as requested based upon resource availability and fire activity.</li> <li>4. Implement the Suppression Repair Plan in areas where suppression activities have ceased and repair is warranted.</li> </ol> <p><b><u>Management Objectives</u></b></p> <ol style="list-style-type: none"> <li>1. Provide timely and accurate dissemination of information to residents of Missoula and Powell Counties, county governments, Lolo National Forests, and MT DNRC. Keep these entities informed of management goals, objectives, and successes on the incident.</li> <li>2. Protect declared/proposed Wilderness, waterways and riparian areas from incident management impacts. Operations personnel should coordinate with appropriate READ(s) to document; and, if necessary, coordinate mitigation measures related to watershed impacts, sensitive species, cultural sites, and minimize introduction and spread of noxious/exotic weeds and aquatic species.</li> </ol> <p><b><u>Additional Commander's Intent</u></b>  <b>PURPOSE:</b> To assure incident management activities are aligned with the overall goals of the requesting and cooperating agencies.  <b>TASK:</b> Communicate, Coordinate and Cooperate incident management activities with Missoula and Powell Counties, county governments, Lolo National Forest, MT DNRC, activities include but are not limited to suppression actions, support needs, and rehabilitation.  <b>OUTCOME:</b> The incident is resolved to the satisfaction of requesting and cooperating agencies.  <b>PURPOSE:</b> To create an environment that is based on solid relationships and is conducive to efficient accomplishments.  <b>TASK:</b> Treat all Incident Management personnel, cooperators, contractors and local publics with dignity and respect creating a "no tolerance" atmosphere for harassment, discrimination, alcohol, or illegal drug use.  <b>OUTCOME:</b> All people associated with the incident felt valued and could contribute to a positive outcome in the management of the incident.  <b>PURPOSE:</b> To ensure that suppression impacts to natural and cultural resources are kept to a minimum.  <b>TASK:</b> Coordinate closely with resource advisors (READs) on all operation activities.  <b>OUTCOME:</b> Resource values have received minimal detrimental impacts.</p>			
6/7 Attachments (mark if attached) <input checked="" type="checkbox"/> Organization List - ICS 203 <input checked="" type="checkbox"/> Div. Assignment Lists - ICS 204 <input checked="" type="checkbox"/> Communications Plan - ICS 205	<input checked="" type="checkbox"/> Medical Plan - ICS 206 <input checked="" type="checkbox"/> Weather Forecast <input checked="" type="checkbox"/> Fire Behavior Forecast <input checked="" type="checkbox"/> Incident Map	<input checked="" type="checkbox"/> Air Operations- ICS 220 <input checked="" type="checkbox"/> Safety Message <input checked="" type="checkbox"/> Medical Emergency Com Plan <input checked="" type="checkbox"/> Weather Forecast	
9. Prepared by (Planning Section Chief) Mike Kopitzke	9. Approved by (Incident Commander) <b>Greg Poncin</b>		

**Prioritized Highly Valued Resources and Assets in the Rice Ridge Fire Area (does not include Flathead NF or Helena-Lewis & Clark NF)**

**9/13/2017**

<b>Priority</b>	<b>Value/Asset Category</b>	<b>Value/Asset Subcategory</b>	<b>Contact</b>	<b>Value/Asset Location</b>
<b>1</b>	<b>Public safety, Firefighter safety</b>			
<b>2</b>	<b>Infrastructure and built assets</b>	Water treatment plant		Collector
		Municipal watershed (Seeley Lake)		Div A/Z, W
		Transmission lines	Northwestern Energy Missoula Electric Coop	Collector
		Electric substations		Seeley Lake Woodworth
		Commo sites		Collector
		Highway 83 and Highway 200		
		Bridges		Collector
<b>3</b>	<b>Defensible Structures</b>	Private and commercial structures	Structure Branch	Refer to Structure Assessments
		Backcountry cabins	Lolo NF	Carmichael Cabin North Fork Cabin
<b>4</b>	<b>Social and political relationships</b>	Cooperators and public		
	<b>Economic disruptions</b>	Communities and businesses		
<b>5</b>	<b>Pasture lands, Recreation infrastructure, and Timber</b>	Montana DNRC	READ, Agency administrator	
		USFS	READ, Agency administrator	Collector
		Private	Landowners	
<b>6</b>	<b>Resource and ecological values</b>	Bull trout habitat	READ	Trail Mountain Creek Blind Canyon Creek Cottonwood Creek North Fork Cottonwood Cr Dunham Creek Monture Creek North Fork Blackfoot River
		Roadless character	READ	Scapegoat Wilderness Bob Marshall Wilderness
		Archeological sites	READ	None identified
		Cemetery		Collector (near MM 3, Hwy 83)

ORGANIZATIONAL STRUCTURE CHART		9. Operations Section	
1. Incident Name <b>Rice Ridge</b>		Chiefs	Brent Olson
		Deputy	
2. Date 09/16/2017		A. Branch I – Divisions/Groups	
		Branch Director	Andy James / Justin Kaber (t)
4. Operational Period 09/17/2017 0700 – 2100 Day		Division Alpha/Zulu	Ryan Butler
		Division Papa	Mike King
5. Incident Commander and Staff		Division Whiskey/Tango	Edward Leblanc
Incident Commander	Greg Poncin	Boy Scout Staging	Howard Richards
Deputy	Mike Goicoechea	Repair Group	Rob Thorp
Safety Officer	Gerald Vickers, Ivan Cupp	Division Mike	Mike Graham
Information Officer	Lisa Radosevich-Craig, Jeannette Dreadfulwater, Mike Cole	Division November	Phil Oosahwe
Liaison Officer	Rob Taylor, Kay Jaquith	Heavy Equipment Group	Kyle Sahd
6. Agency Representatives			
Agency	Lolo NF	B. Branch II – Divisions/Groups	
USFS District Ranger	Rachel Fiegley	Unstaffed	
USFS AA	Joe Norrell		
MT DNRC AA	Kristin Baker-Dickinson	C. Liberty Branch	
Lolo NF READ	Scott Tomson, Josh Schulze, Matt Mayernik	Branch Director	Steve Creech
		Division Alpha/ Bravo	Rob Berney
7. Planning Section		Division Charlie / IA	Chase Payne
Chief	Mike Kopitzke	Division Mike	
Resources Unit	Bob Rogers, Jeff Turner (t)	Division Tango	Daniel Escobedo
Situation Unit	Clint Kolarich, Rob Carlin	Division Uniform	Harold Kibbe
Demobilization Unit	Tanya Murphy, Deb Bond		
Computer Technical	Matt Berry, Rob Bowles		
GIS Specialist	Mark Slaton, Erin Heiselmann, Timory Peel		
Fire Behavior	Tim Metzger		
Strategic Op. Planner	Roy Hall		
Incident Meteorologist	Ryan Leach		
Long Term Analyst	LaWen Hollingsworth	D. Air Operations Branch	
Human Resources	Sandra Padilla	Branch Director	Dennis Morton, John McKee (t)
Status Check-In	Amber Painter (t), Jay Cowan (t)	Air Attack Supervisor	Steve Dondero
8. Logistics Section		Helibase Manager	Joe Rinaldi
Chief	Roylene Gaul, Charlie Showers (t)	Air Support Supervisor	Sarah Culhane (t)
Deputy	Jim Evanoff, Keith Walters	Helicopter Coordinator	
Supply Unit	John Kastner	Air Tanker Coordinator	
Facilities Unit	Tim Wilson		
Ground Support Unit	Darrell Steinberg, Stan Jones	10. Finance	
Communications Unit	Trent Coppinger, Tony Jeffers	Chief	Shirley Ehmann
Medical Unit	Brett Clymer, Emily Ellick-Flette (t), Jeff Cummings	Time Unit	Marta Lujan (t)
Food Unit	Russ "Skip" Danielson	Procurement Unit	Dana Bangart
		Compensation/Claims	Jim Augustine
		Cost Unit	Kevin Sweeney
Prepared by: Robert Rogers			

# Safety Message

## Maintaining Professional Relationships

Maintaining existing, fostering new, and repairing damaged professional relationships is an important part of a safety culture. When a professional relationship becomes damaged, communication fails, people become distracted, and safety issues arise. Oftentimes, safety issues are the result of many smaller ones that could have been avoided.

Follow these suggestions to establish and maintain professional relationships on wildland fire assignments:

- **Be Open to Meeting New People**

Focus on introducing yourself to others whenever the opportunity presents itself. Establish contacts with counterparts and colleagues in your work area.

- **Recognize Your Common Goals**

Acknowledging with your coworkers that you are working in support of common objectives. Be an active member of the team by offering ideas and feedback helps you to identify yourself as a person who recognizes the value of team work.

- **Address Hard Feelings**

Repairing a damaged relationship is a gesture that shows respect and concern for the other person despite the disagreement. A repair can be anything from suggesting a compromise to owning your half of the situation to voicing respect for another party to using humor to break tension.

**It's a Small Fire Community - Stay Connected**

***Poncin's Safety & Medical Team***



# Fire Weather Forecast

FORECAST NO: 46  
 PREDICTION FOR: Sunday Day Shift  
 SHIFT DATE: September 17, 2017  
 FORECAST ISSUED: 2000 September 16, 2017

NAME OF FIRE: Rice Ridge  
 UNIT: MT-LNF / Poncin IMT  
 Phone Number: (240) 778-5278  
 Incident Meteorologist: Dan Byrd

**WEATHER DISCUSSION:** Upper level ridging will bring partly cloudy skies today with warmer temperatures. Clouds will be on the increase tonight with increasing chances for showers on Monday as a strong Pacific storm system approaches the area. This storm system will bring chances for rainshowers through mid-week.

## WEATHER FORECAST TODAY (SUNDAY):

**WEATHER:** Partly cloudy.  
**MAX TEMPERATURES:** Fire line (5,500 ft) 54 –59 F, ICP (4,000 ft) 59 – 63 F.  
**MIN HUMIDITY:** 27 – 32%.  
**20-FOOT WINDS:** SW 5 – 7 mph becoming SW 8-12G17.  
**LAL:** 1 **CWR:** 0% **HAINES:** 3  
**STABILITY / INVERSION:** Weak inversion breaking by early afternoon.  
**SMOKE TRANSPORT:** SW 12 mph.

## WEATHER FORECAST TONIGHT (SUNDAY NIGHT):

**WEATHER:** Becoming mostly cloudy. Slight chance of a light rainshower by am.  
**MIN TEMPERATURES:** 35 – 40F on the ridges to 29 – 34F at ICP and Seeley Lake.  
**MAX HUMIDITY:** 65 – 75% on the ridges and 80 – 90% at ICP and Seeley Lake.  
**WINDS (20 FOOT):** SW 10 mph on the ridge tops, variable 3-5 mph elsewhere.

## WEATHER FORECAST TOMORROW (MONDAY)

**WEATHER:** Mostly cloudy with a chance of rainshowers by early afternoon.  
**MAX TEMPERATURES:** Fire line (5,500 ft) 42 – 47F, ICP (4,000 ft) 50 – 55 F.  
**MIN HUMIDITY:** 40 – 50%.  
**20-FOOT WINDS:** W 7 – 12 mph.  
**LAL:** 1 **CWR:** 70% **HAINES:** 2  
**STABILITY / INVERSION:** Stable conditions all day.  
**SMOKE TRANSPORT:** SW 10 mph.

## EXTENDED FORECAST:

Tuesday...Cloudy with a chance for Rainshowers. 44-48. Min RH 48-52%. 20 Foot Winds SW 12-17.  
 Wednesday...Cloudy. Rainshowers likely. 41-45. Min RH 53-57%. 20 Foot Winds SW 15-20.  
 Thursday... Cloudy with a chance for Rainshowers. 41-45. Min RH 48-52%. 20 Foot Winds SW 7-12.

## Web links for RAWs observations.



Morrell Lookout RAWs



H1 RAWs



Kleinschmidt

**FIRE BEHAVIOR FORECAST**

<b>FORECAST NUMBER:</b> #52	<b>TYPE OF FIRE:</b> Wildland Fire
<b>FIRE NAME:</b> Rice Ridge/Liberty	<b>OPERATIONAL PERIOD:</b> Day 09/17/2017
<b>DATE ISSUED:</b> 09/16/2017	<b>TIME ISSUED:</b> 2000 hours
<b>UNIT:</b> Lolo National Forest	<b>SIGNED:</b> Tim Metzger, FBAN;

**INPUTS**

**WEATHER SUMMARY: See Weather forecast**  
**Warmer and drier for today transitioning to cold and wet Monday!**

**OUTPUTS**

**FIRE BEHAVIOR**

**Indicators for Increased Fire Activity on the Rice Ridge Fire**  
**Relative Humidity <20%, Winds >10mph, Temperatures >80F, 1000 fuel moistures <12%**

**GENERAL:** Partly cloudy skies and warmer today with increasing clouds in the afternoon bringing more rain for the next few days. Expect minimal to no active fire behavior today. Fire behavior can be characterized by primarily creeping and smoldering with a slight potential for surface fire in the heavy dead and down fuels in the closed canopy. Min humidity near 27-32%. Expect heavy fuels to continue to hold heat and smolder due to the very low fuel moistures.

**ALL DIVISIONS:**

Interior smoke may show with the increased sunshine and lower RH values today, but with the precipitation and short burn periods there will be no additional perimeter spread. Isolated portions in the interior may continue to burn out heavy fuels, although the fuel moistures have been on the increase.

Cold temperatures are in the forecast and be prepared. If temps reach below freezing for more than 3 consecutive hours it will frost kill the remaining live vegetation (grass, leaves) increasing a fine fuel load across the area. This is especially important in areas where there maybe heat adjacent to the control lines.

Un-detected spot fires and heat may begin to show with the increase in sunshine and slightly warmer weather.

**AIR OPERATIONS:**  
Low clouds in the morning with partly cloudy skies in the afternoon.

**SAFETY:** Significant precipitation and saturated soils coupled with gusty winds and high severity burn areas in the timber will dramatically increase the potential for falling trees. Stay heads up in these areas.

ASSIGNMENT LIST		1.	2. Division/Group			
		I	Alpha/Zulu			
3. Incident Name		4. Operational Period				
Rice Ridge		Date: 09/17/2017		Time: 0700 – 2100		
5. Operations Personnel						
Operations Chief	Brent Olson (9/24)		Division/Group Supervisor	Ryan Butler (9/24)		
Branch Director	Andy James (9/24), Justin Kaber (t) (9/24)		Air Operations Director Air Attack Supervisor	Dennis Morton (9/24), John McKee (t) (9/24) Steve Dondero (9/24)		
6. Resources Assigned This Period						
Strike Team/Task Force/ Resource Designator	Last Shift	Leader	No. Pers.	Trans. Neede	Drop Off PT./Time	Pick Up PT./Time
O-821 TFLD	9/22	William Ryles	1	N	ICP 0700	ICP 2100
O-819 TFLD (t)	9/23	Lorenzo Velasquez	1	N	ICP 0700	ICP 2100
E-9998 ENG4 Seeley RD 63	loan	Jeoff Mcevers	5	N	ICP 0700	ICP 2100
E-273 ENG6 NPS 13	9/20	Brandon Harriman	3	N	ICP 0700	ICP 2100
E-505 ENG6 Poudre Fire	9/20	Matt Housley	3	N	ICP 0700	ICP 2100
E-9996 ENG6 Tonto E45	9/21	Kyle Fogarty	5	N	ICP 0700	ICP 2100
E-9999 ENG6 Seeley RD 661	loan	Heidi Leritz	4	N	ICP 0700	ICP 2100
O-416 SOF2	9/17	Bruce Malloy	1	N	ICP 0700	ICP 2100
O-818 EMTF	9/22	Rodney Stubbs	1	N	ICP 0700	ICP 2100
O-475 AEMT	9/29	Nolan Yellow-Kidney	1	N	ICP 0700	ICP 2100
7. Control Operations						
<b>Task:</b> Continue to hold and mop up along 720 Road where possible. Mop up along control line 100 feet in. Backhaul water handling equipment as appropriate.						
<b>Purpose:</b> Protect the prioritized values by constructing a control line that has a high probability of preventing surface fire from negatively impacting these values.						
<b>End State:</b> Line was scouted, prepped, burned, held & repaired with no loss to structures. Road closures in the HWY 83 corridor that could have impacted evacuation routes and local economies were minimized or prevented. Pasture land and timber were minimally impacted, recreation infrastructure was protected and bull trout habitat received minimal to no sediment flow.						
8. Special Instructions:						
Prioritization of all control or containment actions taken during the operational period in this Division will be at the discretion of the DIVS. Actions may have to be taken by the DIVS that are not enumerated in today's IAP. These actions would be a result of a significant change in actual or expected fire behavior over and above that anticipated at the time the IAP was prepared. These actions will be coordinated with and approved by the OSC whenever possible. All frequencies listed on all pages are "Controlled, Unclassified Information//Basic."						
9. Division/Group Communication Summary						
Function	Frequency - RX	Frequency - TX	Tone	Channel	Comments	
Command 1	170.6875	166.5750	114.8	9	Repeater assignments are suggestions. If another repeater works better, use it.	
Command 2	171.0625	165.4125	114.8	10		
Command 3	170.0875	162.1875	114.8	11		
Tactical	168.0500	168.0500	114.8	1		
Air to Ground	169.8250	169.8250		12		
Prepared by (RESL)		Approved by (PSC)		Date	Time	
Rick Moore		Mike Kopitzke		09/16/2017	2100	



ASSIGNMENT LIST		1.	2. Division/Group			
		I		Papa		
3. Incident Name		4. Operational Period				
Rice Ridge		Date: 09/17/2017		Time: 0700 – 2100		
5. Operations Personnel						
Operations Chief	Brent Olson (9/24)		Division/Group Supervisor	Mike King (9/24)		
Branch Director	Andy James (9/24), Justin Kaber (t) (9/24)		Air Operations Director Air Attack Supervisor	Dennis Morton (9/24), John McKee (t) (9/24) Steve Dondero (9/24)		
6. Resources Assigned This Period						
Strike Team/Task Force/ Resource Designator	Last Shift	Leader	No. Pers.	Trans. Needed	Drop Off PT./Time	Pick Up PT./Time
E-264 ENG3 UTRID 5326	9/17	Derek Domis	4	N	ICP 0700	ICP 2100
<b>O-892 TFLD</b>	9/22	<b>Brian Holmes</b>	1	N	ICP 0700	ICP 2100
<b>O-893 TFLD (t)</b>	9/22	<b>Emory Paul</b>	1	N	ICP 0700	ICP 2100
E-638 ENG3 CCD 3334	9/22	Shane Kelly	4	N	ICP 0700	ICP 2100
E-639 ENG3 NV-SND 5343	9/22	Dakota Vaughn-O'Brien	4	N	ICP 0700	ICP 2100
E-636 ENG4 NV-WID 2413	9/22	Chad Niblett	3	N	ICP 0700	ICP 2100
E-635 ENG6 NV-BMD 6221	9/22	James Black	3	N	ICP 0700	ICP 2100
E-637 ENG6 NV-SND 5643	9/24	Tolo Martinez	3	N	ICP 0700	ICP 2100
E-611 EXCA Woodchuck Logging	9/23	Dale Walchuck	1	N	ICP 0700	ICP 2100
O-765 SOF2	9/20	Jack Muncy	1	N	ICP 0700	ICP 2100
O-713 EMTF	9/21	Thane Cunningham	1	N	ICP 0700	ICP 2100
7. Control Operations						
<b>Task:</b> Continue to hold and mop up along 477 Road 100 feet in. Backhaul water handling equipment as appropriate.						
<b>Purpose:</b> Protect the prioritized values by constructing a control line that has a high probability of preventing surface fire from negatively impacting these values.						
<b>End State:</b> Line was scouted, prepped, burned, held & repaired with no loss to structures. Road closures in the HWY 83 corridor that could have impacted evacuation routes and local economies were minimized or prevented. Pasture land and timber were minimally impacted, recreation infrastructure was protected and bull trout habitat received minimal to no sediment flow.						
8. Special Instructions:						
Prioritization of all control or containment actions taken during the operational period in this Division will be at the discretion of the DIVS. Actions may have to be taken by the DIVS that are not enumerated in today's IAP. These actions would be a result of a significant change in actual or expected fire behavior over and above that anticipated at the time the IAP was prepared. These actions will be coordinated with and approved by the OSC whenever possible. All frequencies listed on all pages are "Controlled, Unclassified Information//Basic."						
9. Division/Group Communication Summary						
Function	Frequency - RX	Frequency - TX	Tone	Channe	Comments	
Command 1	170.6875	166.5750	114.8	9	Repeater assignments are suggestions. If another repeater works better, use it.	
Command 2	171.0625	165.4125	114.8	10		
Command 3	170.0875	162.1875	114.8	11		
Tactical	166.7250	166.7250	114.8	5		
Air to Ground	169.8250	169.8250		12		
Prepared by (RESL) Rick Moore		Approved by (PSC) Mike Kopitzke		Date 09/16/2017	Time 2100	

ASSIGNMENT LIST				1.	2. Division/Group		
				I			Whiskey/Tango
3. Incident Name				4. Operational Period			
Rice Ridge				Date: 09/17/2017		Time: 0700 – 2100	
5. Operations Personnel							
Operations Chief		Brent Olson (9/24)		Division/Group Supervisor		Edward Leblanc (9/24)	
Branch Director		Andy James (9/24), Justin Kaber (t) (9/24)		Air Operations Director Air Attack Supervisor		Dennis Morton (9/24), John McKee (t) (9/24) Steve Dondero (9/24)	
6. Resources Assigned This Period							
Strike Team/Task Force/ Resource Designator	Last Shift	Leader	No. Pers.	Trans. Needed	Drop Off PT./Time	Pick Up PT./Time	
O-915 TFLD	9/27	Robert Picazo	1	N	ICP 0700	ICP 2100	
E-642 ENG6 AZ-CRA 612	9/28	Tanner Werchau	3	N	ICP 0700	ICP 2100	
E-572 ENG6 AZ-CNF 642	9/25	Bernie Romero	3	N	ICP 0700	ICP 2100	
E-17 Castle Mtn. Fire	9/22	Tyrell Jacobs	3	N	ICP 0700	ICP 2100	
E-53 ENG6 Alder Creek 16	9/21	Vitas Labanauskas	3	N	ICP 0700	ICP 2100	
E-284 SKG2 Hardley Able Log	9/19	Jim Evans	2	N	ICP 0700	ICP 2100	
E-398 PCT3 Timber Trail & Spur	9/20	Robert Brown	2	N	ICP 0700	ICP 2100	
O-844 SOFR	9/24	John Winters	1	N	ICP 0700	ICP 2100	
O-888 EMTF	9/26	Justin Spicer	1	N	ICP 0700	ICP 2100	
7. Control Operations							
<b>Task:</b> Mop up and patrol DP 84 to DP 145. Continue to run the sprinkler system between Blind Canyon and Swamp Creek. Backhaul equipment as appropriate.							
<b>Purpose:</b> Protect the prioritized values by constructing a control line that has a high probability of preventing surface fire from negatively impacting these values.							
<b>End State:</b> Line was scouted, prepped, burned, held & repaired with no loss to structures. Road closures in the HWY 83 corridor that could have impacted evacuation routes and local economies were minimized or prevented. Pasture land and timber were minimally impacted, recreation infrastructure was protected and bull trout habitat received minimal to no sediment flow.							
8. Special Instructions:							
Prioritization of all control or containment actions taken during the operational period in this Division will be at the discretion of the DIVS. Actions may have to be taken by the DIVS that are not enumerated in today's IAP. These actions would be a result of a significant change in actual or expected fire behavior over and above that anticipated at the time the IAP was prepared. These actions will be coordinated with and approved by the OSC whenever possible. All frequencies listed on all pages are "Controlled, Unclassified Information//Basic."							
9. Division/Group Communication Summary							
Function	Frequency - RX	Frequency - TX	Tone	Channel	Comments		
Command 1	170.6875	166.5750	114.8	9	Repeater assignments are suggestions. If another repeater works better, use it.		
Command 2	171.0625	165.4125	114.8	10			
Command 3	170.0875	162.1875	114.8	11			
Tactical	168.6000	168.6000	114.8	3			
Air to Ground	169.8250	169.8250		12			
Prepared by (RESL) Rick Moore		Approved by (PSC) Mike Kopitzke		Date 09/16/2017		Time 2100	

ASSIGNMENT LIST		1.	2. Division/Group			
		I	Boy Scout Staging			
3. Incident Name		4. Operational Period				
Rice Ridge		Date: 09/17/2017		Time: 0700 – 2100		
5. Operations Personnel						
Operations Chief	Brent Olson (9/24)	Division/Group Supervisor	Howard Richards (9/28)			
Branch Director	Andy James (9/24), Justin Kaber (t) (9/24)	Air Operations Director Air Attack Supervisor	Dennis Morton (9/24), John McKee (t) (9/24) Steve Dondero (9/24)			
6. Resources Assigned This Period						
Strike Team/Task Force/ Resource Designator	Last Shift	Leader	No. Pers.	Trans. Needed	Drop Off PT./Time	Pick Up PT./Time
E-397 SKG1 Soft Track Attack	9/22	Justus Covey	1	N	0700	2100
E-352 SKG4 Milner Brothers	9/25	Larry Milner	1	N	0700	2100
E-297 SKD3 Caldbeck Logging	9/24	Branden Caldbeck	1	N	0700	2100
E-550 Grinder John Jump			1	N	0700	2100
E-57 EXCA John Jump	9/20	Stony Shipp	1	N	0700	2100
E-296 SKDS Equipment Tech.	9/16	Bill Jones	1	N	0700	2100
E-129 FEL1 Birky Logging	9/14	Mike Thompson	1	N	0700	2100
E-425 DOZ3 Westslope Excavation	9/22	Bill Bartlett	1	N	0700	2100
E-339 SKG2 Quick Response	9/21	Anna Woodall	1	N	0700	2100
E-290 HETF King Mtn	9/21	Jim Burgess	1	N	0700	2100
O-595 DIVS	9/17	John Agner	1	N	0700	2100
7. Control Operations						
<b>Task:</b> Support Divisions with surge capacity as instructed by DIVS. Support Initial Attack as instructed by Operations.						
<b>Purpose:</b> To protect populated areas in the event of fire spread beyond containment lines into the urban interface.						
<b>End State:</b> Fire operations were successful resulting in no loss to structures. Road closures in the HWY 83 and 200 corridors that could have impacted evacuation routes and local economies were minimized or prevented. Pasture land and timber were minimally impacted, recreation infrastructure was protected and bull trout habitat received minimal to no sediment flow.						
8. Special Instructions:						
Prioritization of all control or containment actions taken during the operational period in this Division will be at the discretion of the DIVS. Actions may have to be taken by the DIVS that are not enumerated in today's IAP. These actions would be a result of a significant change in actual or expected fire behavior over and above that anticipated at the time the IAP was prepared. These actions will be coordinated with and approved by the OSC whenever possible.						
All frequencies listed on all pages are "Controlled, Unclassified Information//Basic."						
9. Division/Group Communication Summary						
Function	Frequency - RX	Frequency - TX	Tone	Chann	Comments	
Command 1	170.6875	166.5750	114.8	9	Repeater assignments are suggestions. If another repeater works better, use it.	
Command 2	171.0625	165.4125	114.8	10		
Command 3	170.0875	162.1875	114.8	11		
Tactical	168.2875	168.2875	114.8	8		
Air to Ground	169.8250	169.8250		12		
Prepared by (RESL) Rick Moore		Approved by (PSC) Mike Kopitzke		Date 09/16/2017		Time 2100

ASSIGNMENT LIST		1.	2. Division/Group				
		I	Repair Group				
3. Incident Name		4. Operational Period					
Rice Ridge		Date: 09/17/2017		Time: 0700 – 2100			
5. Operations Personnel							
Operations Chief	Brent Olson (9/24)		Division/Group Supervisor	Rob Thorp (9/19)			
Branch Director	Andy James (9/24), Justin Kaber (t) (9/24)		Air Operations Director Air Attack Supervisor	Dennis Morton (9/24), John McKee (t) (9/24) Steve Dondero (9/24)			
6. Resources Assigned This Period							
Strike Team/Task Force/ Resource Designator	Last Shift	Leader	No. Pers.	Trans. Needed	Drop Off PT./Time	Pick Up PT./Time	
O-916 TFLD	9/28	Howard Richards	1	N	ICP 0700	ICP 2100	
O-934 TFLD	9/27	Nathan Suida	1	N	ICP 0700	ICP 2100	
O-457 FOBS	9/19	Gerald Scott	1	N	ICP 0700	ICP 2100	
E-389 GRD Price	9/26	Norm Rostooki	1	N	ICP 0700	ICP 2100	
E-531 GRD D & S Contracting	9/19	Dennis Wulfekuhle	1	N	ICP 0700	ICP 2100	
E-361 WTS2 DZS Contracting	9/20	Casey Smith	1	N	ICP 0700	ICP 2100	
O-460 TFLD	9/26	Dave Tingley	1	N	ICP 0700	ICP 2100	
O-933 TFLD	9/27	David Martinez	1	N	ICP 0700	ICP 2100	
O-935 TFLD (t)	9/27	Cleo Martinez	1	N	ICP 0700	ICP 2100	
O-656 TFLD	9/18	Clayton Swanger	1	N	ICP 0700	ICP 2100	
HEQB	local	Heidi Leritz	1	N	ICP 0700	ICP 2100	
C-32 HC2 Crow Crew #1	9/23	Tyler Lefthand	20	N	ICP 0700	ICP 2100	
E-27 DOZ2 Sorlie Excavating	9/22	Jim Hinchly	1	N	ICP 0700	ICP 2100	
E-28 EXCA Price Contracting	9/17	Brian Jacobs	1	N	ICP 0700	ICP 2100	
E-177 EXCA J & E Contracting	9/19	Darin Woodside	1	N	ICP 0700	ICP 2100	
E-530 EXCA Price Contracting	9/18	Ron Price	1	N	ICP 0700	ICP 2100	
E-250 WTS2 Oxford	9/25	Jacob Oxford	1	N	ICP 0700	ICP 2100	
O-244 FAL1 Jamison Falling Mod.	9/25	Michael Phillips/Levi Learn	2	N	ICP 0700	ICP 2100	
E-175 EXCA Price Contracting	9/29	Ron Webb	1	N	ICP 0700	ICP 2100	
E-408 FORW Euchre Mtn Logging	9/30	Boomer Alexander	1	N	ICP 0700	ICP 2100	
E-460 SKG3 Sherrill Jared Skid	9/30	Jared Sherrill	1	N	ICP 0700	ICP 2100	
O-572 FAL1 Brothers Fire LLC	10/1	Wade Long	2	N	ICP 0700	ICP 2100	
7. Control Operations							
<b>Task:</b> Begin fire suppression repair of the interior line. Work with each division and READ's to continue to identify fire suppression repairs needed and appropriate time frames for doing that work.							
<b>Purpose:</b> To repair the suppression related damage caused by firefighting operations.							
<b>End State:</b> Erosion and loss of soil productivity is minimized, damaged ecological functions are restored, trail and road systems are returned to their pre-fire condition, and the spread of noxious weeds has been limited.							
8. Special Instructions:							
Prioritization of all control or containment actions taken during the operational period in this Division will be at the discretion of the DIVS. Actions may have to be taken by the DIVS that are not enumerated in today's IAP. These actions would be a result of a significant change in actual or expected fire behavior over and above that anticipated at the time the IAP was prepared. These actions will be coordinated with and approved by the OSC whenever possible.							
All frequencies listed on all pages are "Controlled, Unclassified Information//Basic."							
9. Division/Group Communication Summary							
Function	Frequency - RX	Frequency - TX	Tone	Channe	Comments		
Command 1	170.6875	166.5750	114.8	9	Repeater assignments are suggestions. If another repeater works better, use it.		
Command 2	171.0625	165.4125	114.8	10			
Command 3	170.0875	162.1875	114.8	11			
Tactical	167.5250	167.5250	114.8	7			
Air to Ground	169.8250	169.8250		12			
Prepared by (RESL) Rick Moore		Approved by (PSC) Mike Kopitzke		Date 09/16/2017		Time 2100	

ASSIGNMENT LIST		1.	2. Division/Group				
		I	Repair Group Continued				
3. Incident Name		4. Operational Period					
Rice Ridge		Date: 09/17/2017		Time: 0700 – 2100			
5. Operations Personnel							
Operations Chief	Brent Olson (9/24)		Division/Group Supervisor	Rob Thorp (9/19)			
Branch Director	Andy James (9/24), Justin Kaber (t) (9/24)		Air Operations Director Air Attack Supervisor	Dennis Morton (9/24), John McKee (t) (9/24) Steve Dondero (9/24)			
6. Resources Assigned This Period							
Strike Team/Task Force/ Resource Designator	Last Shift	Leader	No. Pers.	Trans. Needed	Drop Off PT./Time	Pick Up PT./Time	
O-891 TFLD	9/26	Drew Grimes	1	N	ICP 0700	ICP 2100	
O-523 TFLD (t)	local	Ryan Hall	1	N	ICP 0700	ICP 2100	
O-925 HEQB	9/26	Eric Moore	1	N	ICP 0700	ICP 2100	
C-154 HC2 Zuni	9/28	Murray Hannaweeka	20	N	ICP 0700	ICP 2100	
C-8244 HC2 Whitehorse	9/28	Ron White	20	N	ICP 0700	ICP 2100	
E-292 EXCA Westslope	9/27	Cody Bartlett	2	N	ICP 0700	ICP 2100	
E-91 WTS2 Oxford	9/28	Charlie Clark	1	N	ICP 0700	ICP 2100	
E-629 WTS3 Moores	9/29	Chad Hanvy	1	N	ICP 0700	ICP 2100	
E-422 EXCA Westslope	9/28	Jim Bartlett	1	N	ICP 0700	ICP 2100	
E-56 EXCA LTL Enterprises	9/18	Larry Roberts	2	N	ICP 0700	ICP 2100	
E-424 EXCA I Know Jack	9/20	Jim Mathison	2	N	ICP 0700	ICP 2100	
E-44 DOZ2 McColloch	9/24	Mark McColloch	2	N	ICP 0700	ICP 2100	
E-558 SKD2 Haines Contracting	9/23	Tylen Dial	2	N	ICP 0700	ICP 2100	
E-284 SKG2 Hardley	9/19	Jim Evans	1	N	ICP 0700	ICP 2100	
E-253 TCTL Double Ott	9/19	Gary Guillot	1	N	ICP 0700	ICP 2100	
O-33 FAL1 Jamison Falling Mod.	9/26	Larry Dolezal/Nick Pierce	2	N	ICP 0700	ICP 2100	
O-185 FAL1 Wildfire Resources	9/21	Steve Joslin/Robin Mavros	2	N	ICP 0700	ICP 2100	
O-848 EMTF	9/20	J. Seth Kirk	1	N	ICP 0700	ICP 2100	
7. Control Operations							
<b>Task:</b> Begin fire suppression repair of the interior line. Work with each division and READ's to continue to identify fire suppression repairs needed and appropriate time frames for doing that work.							
<b>Purpose:</b> To repair the suppression related damage caused by firefighting operations.							
<b>End State:</b> Erosion and loss of soil productivity is minimized, damaged ecological functions are restored, trail and road systems are returned to their pre-fire condition, and the spread of noxious weeds has been limited.							
8. Special Instructions:							
<p>Prioritization of all control or containment actions taken during the operational period in this Division will be at the discretion of the DIVS. Actions may have to be taken by the DIVS that are not enumerated in today's IAP. These actions would be a result of a significant change in actual or expected fire behavior over and above that anticipated at the time the IAP was prepared. These actions will be coordinated with and approved by the OSC whenever possible.</p> <p>All frequencies listed on all pages are "Controlled, Unclassified Information//Basic."</p>							
9. Division/Group Communication Summary							
Function	Frequency - RX	Frequency - TX	Tone	Channe	Comments		
Command 1	170.6875	166.5750	114.8	9	Repeater assignments are suggestions. If another repeater works better, use it.		
Command 2	171.0625	165.4125	114.8	10			
Command 3	170.0875	162.1875	114.8	11			
Tactical	167.5250	167.5250	114.8	7			
Air to Ground	169.8250	169.8250		12			
Prepared by (RESL) Rick Moore		Approved by (PSC) Mike Kopitzke		Date 09/16/2017	Time 2100		

ASSIGNMENT LIST		1.	2. Division/Group				
		I	Mike				
3. Incident Name		4. Operational Period					
Rice Ridge		Date: 09/17/2017		Time: 0700 – 2100			
5. Operations Personnel							
Operations Chief	Brent Olson (9/24)		Division/Group Supervisor	Mike Graham (9/24)			
Branch Director	Andy James (9/24) Justin Kaber (t) (9/24)		Air Operations Director Air Attack Supervisor	Dennis Morton (9/24), John McKee (t) (9/24) Steve Dondero (9/24)			
6. Resources Assigned This Period							
Strike Team/Task Force/ Resource Designator	Last Shift	Leader	No. Pers.	Trans. Needed	Drop Off PT./Time	Pick Up PT./Time	
E-264.12 TFLD	9/17	Dan Probert	1	N	ICP 0700	ICP 2100	
E-125 HETF Double OTT	9/19	Kvande Anderson	9	N	ICP 0700	ICP 2100	
E-649 Delimber	9/28	Michael Martelli	1	N	ICP 0700	ICP 2100	
E-178 FEL1 J&E Contracting	9/19	Ed Jungers	2	N	ICP 0700	ICP 2100	
O-474 EMTF	9/20	Sherri McDougal	1	N	ICP 0700	ICP 2100	
7. Control Operations							
<b>Task:</b> Move the logs and slash along the road through private land created from the prep of the indirect line from the 89 Road to the North Fork of the Blackfoot River.							
<b>Purpose:</b> Protect the prioritized values by constructing a control line that has a high probability of preventing surface fire from negatively impacting these values.							
<b>End State:</b> Line was scouted, prepped, burned, held & repaired with no loss to structures. Forest Service timber was burned with low to mixed severity fire & bull trout habitat received minimal to no sediment flow. Road closures in the HWY 200 corridor that could have impacted evacuation routes and local economies were minimized or prevented.							
8. Special Instructions:							
Prioritization of all control or containment actions taken during the operational period in this Division will be at the discretion of the DIVS. Actions may have to be taken by the DIVS that are not enumerated in today's IAP. These actions would be a result of a significant change in actual or expected fire behavior over and above that anticipated at the time the IAP was prepared. These actions will be coordinated with and approved by the OSC whenever possible.							
All frequencies listed on all pages are "Controlled, Unclassified Information//Basic."							
9. Division/Group Communication Summary							
Function	Frequency - RX	Frequency - TX	Tone	Channe	Comments		
Command 1	170.6875	166.5750	114.8	9	Repeater assignments are suggestions. If another repeater works better, use it.		
Command 2	171.0625	165.4125	114.8	10			
Command 3	170.0875	162.1875	114.8	11			
Tactical	166.7750	166.7750	114.8	6			
Air to Ground	169.8250	169.8250		12			
Prepared by (RESL) Rick Moore		Approved by (PSC) Mike Kopitzke		Date 09/16/2017	Time 2100		

ASSIGNMENT LIST		1.	2. Division/Group			
		I	November			
3. Incident Name		4. Operational Period				
Rice Ridge		Date: 09/17/2017		Time: 0700 – 2100		
5. Operations Personnel						
Operations Chief	Brent Olson (9/24)		Division/Group Supervisor	Phil Oosahwe (9/18)		
Branch Director	Andy James (9/24), Justin Kaber (t) (9/24)		Air Operations Director Air Attack Supervisor	Dennis Morton (9/23), John McKee (t) (9/24) Steve Dondero (9/24)		
6. Resources Assigned This Period						
Strike Team/Task Force/ Resource Designator	Last Shift	Leader	No. Pers.	Trans. Needed	Drop Off PT./Time	Pick Up PT./Time
E-87 ENG3 Oftedahl Logging	9/17	Leonard Oftedahl	3	N	ICP 0700	ICP 2100
E-432 ENG5 Castle Mountain	9/17	Jill Benton	3	N	ICP 0700	ICP 2100
E-574 ENG6 Outback Firefighting	9/25	Bruce Jenkins	3	N	ICP 0700	ICP 2100
E-449 WTS2 Blacktail Fire Services	9/23	Sarah Leitz	1	N	ICP 0700	ICP 2100
E-301 SKD1 Smith Logging	9/21	Joe Works	2	N	ICP 0700	ICP 2100
E-175 EXCA Price Contracting	9/29	Ron Webb	2	N	ICP 0700	ICP 2100
E-179 FEL1 Bull Creek Forestry	9/22	Levi Cahoon	1	N	ICP 0700	ICP 2100
E-308 PROC Euchre Mtn Logging	9/24	Nathan Richardson	1	N	ICP 0700	ICP 2100
E-606 TDMP I Know Jack	9/24	Mark Lock	1	N	ICP 0700	ICP 2100
O-894 TFLD	9/26	Dan Kaufenberg	1	N	ICP 0700	ICP 2100
O-775 HEQB (t)	9/21	Raymond Cordova	1	N	ICP 0700	ICP 2100
O-756 SOFR	9/20	Sammy McFarland	1	N	ICP 0700	ICP 2100
O-815 EMTF	9/22	Randy Clark	1	N	ICP 0700	ICP 2100
7. Control Operations						
<b>Task:</b> Mop up the 477 Road from the Branch Break to DP 170. Assist Heavy Equipment Group with prep of the 89 Road. Remove slash and logs along the 477 Road.						
<b>Purpose:</b> Protect the prioritized values by constructing a control line that has a high probability of preventing surface fire from negatively impacting these values.						
<b>End State:</b> Line was scouted, prepped, burned, held & repaired with no loss to structures. Forest Service timber was burned with low to mixed severity fire & bull trout habitat received minimal to no sediment flow. Road closures in the HWY 200 corridor that could have impacted evacuation routes and local economies were minimized or prevented.						
8. Special Instructions:						
Prioritization of all control or containment actions taken during the operational period in this Division will be at the discretion of the DIVS. Actions may have to be taken by the DIVS that are not enumerated in today's IAP. These actions would be a result of a significant change in actual or expected fire behavior over and above that anticipated at the time the IAP was prepared. These actions will be coordinated with and approved by the OSC whenever possible.						
All frequencies listed on all pages are "Controlled, Unclassified Information//Basic."						
9. Division/Group Communication Summary						
Function	Frequency - RX	Frequency - TX	Tone	Channe	Comments	
Command 1	170.6875	166.5750	114.8	9	Repeater assignments are suggestions. If another repeater works better, use it.	
Command 2	171.0625	165.4125	114.8	10		
Command 3	170.0875	162.1875	114.8	11		
Tactical	168.2000	168.2000	114.8	2		
Air to Ground	169.8250	169.8250		12		
Prepared by (RESL)		Approved by (PSC)		Date	Time	
Rick Moore		Mike Kopitzke		09/16/2017	2100	

ASSIGNMENT LIST		1.	2. Division/Group			
		I		<b>Heavy Equipment Group</b>		
3. Incident Name		4. Operational Period				
<b>Rice Ridge</b>		Date: 09/16/2017		Time: 0700 – 2100		
<b>5. Operations Personnel</b>						
Operations Chief	Brent Olson (9/24)		Division/Group Supervisor	Kyle Sahd (9/18)		
Branch Director	Andy James (9/24), Justin Kaber (t) (9/24)		Air Operations Director Air Attack Supervisor	Dennis Morton (9/24), John McKee (t) (9/24) Steve Dondero (9/24)		
<b>6. Resources Assigned This Period</b>						
Strike Team/Task Force/ Resource Designator	Last Shift	Leader	No. Pers.	Trans. Needed	Drop Off PT./Time	Pick Up PT./Time
<b>O-448 HEQB (t)</b>	9/17	<b>Jon Burk</b>	1	N	ICP 0700	ICP 2100
E-628 WTS2 Modoc 257	9/26	Kyle Bonham	1	N	ICP 0700	ICP 2100
E-283 SKD2 John Ward Contract.	9/24	Josh Pluid	2	N	ICP 0700	ICP 2100
E-350 FORW Bull Creek Forestry	9/18	Joel Cahoon	2	N	ICP 0700	ICP 2100
E-309 PROC Mark Cheff Logging	9/18	Austin Richmond	1	N	ICP 0700	ICP 2100
E-351 PROC Bull Creek Forestry	9/25	Leelyn Cahoon	1	N	ICP 0700	ICP 2100
E-299 TDMP Wayne Schlosser	9/25	Wayne Schlosser	1	N	ICP 0700	ICP 2100
E-607 TDMP Don Beck Ranches	9/24		1	N	ICP 0700	ICP 2100
E-300 EXCA Westslope	9/29	Josiah Denham	1	N	ICP 0700	ICP 2100
<b>O-863 TFLD</b>	9/23	<b>JD Morris</b>	1	N	ICP 0700	ICP 2100
<b>O- 814 TFLD (t)</b>	9/23	<b>Nathan Bassford</b>	1	N	ICP 0700	ICP 2100
E-291 DOZ3 I Know Jack LLC	9/22	Ben Thompson	2	N	ICP 0700	ICP 2100
E-69 SKD1 Birky Logging	9/22	Dan Paterson	1	N	ICP 0700	ICP 2100
E-529 EXCA Don Beck Constr.	9/20	Ken Bice	2	N	ICP 0700	ICP 2100
E-527 TDMP Don Beck Constr.	9/20	Jim Archer	1	N	ICP 0700	ICP 2100
E-528 TDMP Don Beck Constr.	9/20	Cliff Dancy	1	N	ICP 0700	ICP 2100
E-648 Processor King Mountain	9/26	Jim Burgess	1	N	ICP 0700	ICP 2100
O-884 EMTF	9/26	Ray Staples	1	N	ICP 0700	ICP 2100
<b>7. Control Operations</b>						
<b>Task:</b> Construct fire line and shaded fuel-break as per specifications of each division the group works on.						
<b>Purpose:</b> Protect the prioritized values by constructing a control line that has a high probability of preventing surface fire from negatively impacting these values.						
<b>End State:</b> Line was scouted, prepped, burned, held & repaired with no loss to structures. Forest Service timber was burned with low to mixed severity fire & bull trout habitat received minimal to no sediment flow. Road closures in the HWY 83 and 200 corridors that could have impacted evacuation routes and local economies were minimized or prevented.						
<b>8. Special Instructions:</b>						
Prioritization of all control or containment actions taken during the operational period in this Division will be at the discretion of the DIVS. Actions may have to be taken by the DIVS that are not enumerated in today's IAP. These actions would be a result of a significant change in actual or expected fire behavior over and above that anticipated at the time the IAP was prepared. These actions will be coordinated with and approved by the OSC whenever possible.						
All frequencies listed on all pages are "Controlled, Unclassified Information/Basic."						
<b>9. Division/Group Communication Summary</b>						
Function	Frequency - RX	Frequency - TX	Tone	Channe	Comments	
Command 1	170.6875	166.5750	114.8	9	Repeater assignments are suggestions. If another repeater works better, use it.	
Command 2	171.0625	165.4125	114.8	10		
Command 3	170.0875	162.1875	114.8	11		
Tactical	168.0500	168.0500	114.8	1		
Air to Ground	169.8250	169.8250		12		
<b>Prepared by (RESL)</b> Rick Moore		<b>Approved by (PSC)</b> Mike Kopitzke		<b>Date</b> 09/15/2017		<b>Time</b> 2100



ASSIGNMENT LIST			1. Branch	2. Division/Group		
			Liberty		Alpha / Bravo	
3. Incident Name		4. Operational Period				
Rice Ridge		Date: 09/17/2017		Time: 0700 – 2100		
5. Operations Personnel						
Operations Chief	Mark Goeller (9/23)		Division/Group Supervisor	Rob Berney (9/25)		
Branch Director	Steve Creech (9/17)		Air Operations Director Air Attack Supervisor	Dennis Morton (9/24), John McKee (t) (9/24) Steve Dondero (9/24)		
6. Resources Assigned This Period						
Strike Team/Task Force/ Resource Designator	Last Shift	Leader	No. Pers.	Trans. Needed	Drop Off PT./Time	Pick Up PT./Time
ENG6 Truxton Canyon #6862		Alonzo Smith	4	N	ICP/0700	ICP/2100
E-8468 ENG6 Interior	9/21	Chase Strand	3	N	ICP/0700	ICP/2100
E-8469 ENG6 Interior	9/21	Josh Tucker	3	N	ICP/0700	ICP/2100
E-8461 DOZ2 Flash Excavating	9/23	Linda Cooper	2	N	ICP/0700	ICP/2100
E-8334 EXCA Price Contracting	9/24	Jesse Gelormino	2	N	ICP/0700	ICP/2100
E-8436 EXCA Flash Excavating	9/19	Gordon Eckel	1	N	ICP/0700	ICP/2100
E-8288 FEL1 A&C Construction	9/19	Jacob Knoll	2	N	ICP/0700	ICP/2100
FEL1 3 Mor Enterprises*		Todd Morigeau	2	N	ICP/0700	ICP/2100
E-8455 SKD1 Anderson Logging	9/23	Jeff Jackson	2	N	ICP/0700	ICP/2100
E-8343 SKG3 Rocky Mtn	9/18	Cal Courville	2	N	ICP/0700	ICP/2100
E-8365 SKG3 Bull Creek Forestry	9/23	Daniel Lapka	2	N	ICP/0700	ICP/2100
O-8733 HEQB	9/26	Preston Ley	1	N	ICP/0700	ICP/2100
O-8739 HEQB	9/28	Mark Otis	1	N	ICP/0700	ICP/2100
TFLD		Clint Davis	1	N	ICP/0700	ICP/2100
Ambo Medic 6			2	N	ICP/0700	ICP/2100
7. Control Operations						
<b>Task:</b> Skid and deck materials generated from line prep operations. Back haul excess accountable property.						
<b>Purpose:</b> Facilitate transport of generated material and accountable property off the line.						
<b>End State:</b> All generated material is transported to an appropriate utilization facility and excess accountable property is returned to ICP.						
8. Special Instructions:						
<ul style="list-style-type: none"> <li>- Confirm line locations and equipment use with READs. Identify/mitigate hazard trees. Report any new line locations to SITL.</li> <li>- Communicate sightings of large game to others working in the area, i.e. bears, elk, and moose.</li> <li>- Avoid all ground disturbance activities within known or probable cultural resource sites.</li> <li>- All resources must check-in with the division supervisor when traveling through any division.</li> <li>- Prioritization of all control or containment actions taken during the operational period in this Division will be at the discretion of the DIVS. Actions may have to be taken by the DIVS that are not enumerated in today's IAP. These actions would be a result of a significant change in actual or expected fire behavior over and above that anticipated at the time the IAP was prepared. These actions will be coordinated with and approved by the OSC whenever possible.</li> </ul>						
9. Division/Group Communication Summary						
Function	Frequency - RX	Frequency - TX	Tone	Channel	Comments	
Command	171.0500 N	165.3625 N	110.9	10	Repeater assignments are suggestions. If another repeater works better, use it.	
Tactical	168.2500 N	168.2500 N	110.9	3		
Air to Ground	168.5000 N	168.5000 N	CSQ	13		
Air Guard	168.6250 N	168.6250 N	CSQ	16		
Prepared by (RESL) Robert Rogers		Approved by (PSC) Mike Kopitzke		Date 9/16/17		Time 2100

ASSIGNMENT LIST		1. Branch		2. Division/Group		
		Liberty		Charlie / IA		
3. Incident Name		Rice Ridge		4. Operational Period		
				Date: 09/17/2017 Time: 0700 – 2100		
5. Operations Personnel						
Operations Chief	Mark Goeller (9/23)		Division/Group Supervisor	Chase Payne (9/19)		
Branch Director	Steve Creech (9/17)		Air Operations Director Air Attack Supervisor	Dennis Morton (9/24), John McKee (t) (9/24) Steve Dondero (9/24)		
6. Resources Assigned This Period						
Strike Team/Task Force/ Resource Designator	Last Shift	Leader	No. Pers.	Trans. Needed	Drop Off PT./Time	Pick Up PT./Time
HC2IA CSKT		Chris McCrea	22		ICP/0700	ICP/2100
WFM Eastern OK #1	9/17	Scott Kopepassah	10		ICP/0700	ICP/2100
WFM Eastern OK #2	9/17	Jesus Corona	11		ICP/0700	ICP/2100
ENG6 Winnebago #5		Brittany Ironshell	3		ICP/0700	ICP/2100
ENG6 Winnebago #6		Dewayne Traverse	3		ICP/0700	ICP/2100
E-8341 WTS3 Rene Dubay*	9/26	William Tanner	1		ICP/0700	ICP/2100
DOZ1 CSKT 1*		Adam Westerman	2		ICP/0700	ICP/2100
DOZ1 CSKT 2*			2		ICP/0700	ICP/2100
E-8346 SKG3 Lonestone Logging*	9/17	Lane Foster	2		ICP/0700	ICP/2100
E-8398 SKG1 Soft Track Attack	9/17	Steve Bonner	2		ICP/0700	ICP/2100
E-8287 FEL1 Petersen Trucking	9/26	Cody Petersen	2		ICP/0700	ICP/2100
<b>O-8352 HEQB</b>		<b>Doug Mays</b>	1		ICP/0700	ICP/2100
<b>TFLD (t)</b>		<b>Rawley Holiday</b>	1		ICP/0700	ICP/2100
<b>O-8723 TFLD</b>	<b>9/25</b>	<b>Dustin Williams</b>	1		ICP/0700	ICP/2100
<b>O-8728 TFLD (t)</b>	<b>9/25</b>	<b>Benjamin Stauffer</b>	1		ICP/0700	ICP/2100
<b>O-8722 TFLD</b>	<b>9/25</b>	<b>Jason Westholter</b>	1		ICP/0700	ICP/2100
<b>O-8727 TFLD (t)</b>	<b>9/25</b>	<b>Shawn Woodbury</b>	1		ICP/0700	ICP/2100
O-8741 SOF2	9/24	Scott Belknap	1		ICP/0700	ICP/2100
O-8738 EMPF	9/28	Nate Adams	1		ICP/0700	ICP/2100
7. Control Operations						
<p><b>Task:</b> Mop up one chain in from the fire edge. Grid for spots in Second Creek Drainage and where fire impacted area near Div. B/C break.</p> <p><b>Purpose:</b> Check fire spread to the east protecting values around Placid and Seeley Lakes.</p> <p><b>End State:</b> Primary lines are completed and contingency lines are identified that have high likelihood of success.</p>						
8. Special Instructions:						
<ul style="list-style-type: none"> <li>- Confirm line locations and equipment use with READs. Identify/mitigate hazard trees. Report any new line locations to SITL.</li> <li>- Communicate sightings of large game to others working in the area, i.e. bears, elk, and moose.</li> <li>- Avoid all ground disturbance activities within known or probable cultural resource sites.</li> <li>- All resources must check-in with the division supervisor when traveling through any division.</li> <li>- Prioritization of all control or containment actions taken during the operational period in this Division will be at the discretion of the DIVS. Actions may have to be taken by the DIVS that are not enumerated in today's IAP. These actions would be a result of a significant change in actual or expected fire behavior over and above that anticipated at the time the IAP was prepared. These actions will be coordinated with and approved by the OSC whenever possible.</li> </ul>						
9. Division/Group Communication Summary						
Function	Frequency - RX	Frequency - TX	Tone	Channel	Comments	
Command	171.0500 N	165.3625 N	110.9	10	Repeater assignments are suggestions. If another repeater works better, use it.	
Tactical	168.2500 N	168.2500 N	110.9	3		
Air to Ground	168.5000 N	168.5000 N	CSQ	13		
Air Guard	168.6250 N	168.6250 N	CSQ	16		
Prepared by (RESL) Robert Rogers		Approved by (PSC) Mike Kopitzke		Date 9/16/17	Time 2100	

ASSIGNMENT LIST			1. Branch		2. Division/Group	
			Liberty		Mike	
3. Incident Name			4. Operational Period			
Rice Ridge			Date: 09/17/2017		Time: 0700 – 2100	
5. Operations Personnel						
Operations Chief		Mark Goeller (9/23)		Division/Group Supervisor		
Branch Director		Steve Creech (9/17)		Air Operations Director Air Attack Supervisor		Dennis Morton (9/24), John McKee (t) (9/24) Steve Dondero (9/24)
6. Resources Assigned This Period						
Strike Team/Task Force/ Resource Designator	Last Shift	Leader	No. Pers.	Trans. Needed	Drop Off PT./Time	Pick Up PT./Time
O-8628 TFLD	9/18	Justin Decker	1	N	ICP/0700	ICP/2100
E-8432 ENG6 Bishop #5	9/19	Jon Mount	3	N	ICP/0700	ICP/2100
E-8433 ENG6 Bishop #3	9/19	Dustin Kirkaldie	3	N	ICP/0700	ICP/2100
O-8735 SOF2	9/24	Kenny Rogers	1	N	ICP/0700	ICP/2100
S-810611 EMPF	9/28	Dallas Kahn	1	N	ICP/0700	ICP/2100
7. Control Operations						
<b>Task:</b> Secure, monitor, and mop up containment lines and grid for spot fires.						
<b>Purpose:</b> Check fire spread to the east protecting values around Placid and Seeley Lakes.						
<b>End State:</b> Primary lines are completed and contingency lines are identified that have high likelihood of success.						
8. Special Instructions:						
<ul style="list-style-type: none"> <li>- Confirm line locations and equipment use with READs. Report any new line locations to SITL.</li> <li>- Communicate sightings of large game to others working in the area, i.e. bears, elk, and moose.</li> <li>- Avoid all ground disturbance activities within known or probable cultural resource sites</li> <li>- All resources must check-in with the division supervisor when traveling through any division.</li> <li>- Prioritization of all control or containment actions taken during the operational period in this Division will be at the discretion of the DIVS. Actions may have to be taken by the DIVS that are not enumerated in today's IAP. These actions would be a result of a significant change in actual or expected fire behavior over and above that anticipated at the time the IAP was prepared. These actions will be coordinated with and approved by the OSC whenever possible.</li> </ul>						
9. Division/Group Communication Summary						
Function	Frequency - RX	Frequency - TX	Tone	Channel	Comments	
Command	171.0500 N	165.3625 N	110.9	10	Repeater assignments are suggestions. If another repeater works better, use it.	
Tactical	169.6375 N	169.6375 N	110.9	4		
Air to Ground	168.5000 N	168.5000 N	CSQ	13		
Air Guard	168.6250 N	168.6250 N	CSQ	16		
Prepared by (RESL) Robert Rogers		Approved by (PSC) Mike Kopitzke		Date 9/16/17		Time 2100

ASSIGNMENT LIST		1. Branch	Liberty		2. Division/Group		Tango		
		3. Incident Name		Rice Ridge		4. Operational Period			
5. Operations Personnel									
Operations Chief		Mark Goeller (9/23)		Division/Group Supervisor		Daniel Escobedo (9/17)			
Branch Director		Steve Creech (9/17)		Air Operations Director Air Attack Supervisor		Dennis Morton (9/24), John McKee (t) (9/24) Steve Dondero (9/24)			
6. Resources Assigned This Period									
Strike Team/Task Force/ Resource Designator	Last Shift	Leader	No. Pers.	Trans. Needed	Drop Off PT./Time	Pick Up PT./Time			
C-8218 HC2 Ronan #1*	9/17	Johnny Keenan	9		ICP/0700	ICP/2100			
E-8397 ENG3 Piedmont	9/20	Roy Kottwitz	3		ICP/0700	ICP/2100			
E-8355 ENG6 White Horse Forestry	9/26	Jason McGaughy	3		ICP/0700	ICP/2100			
E-8232 WTS2 Hart Ventures	9/17	Chase Clairmont	1		ICP/0700	ICP/2100			
O-8553 SOFR	9/21	Jeffrey Kerr	1		ICP/0700	ICP/2100			
O-8737 EMTF	9/26	van Loon	1		ICP/0700	ICP/2100			
7. Control Operations									
<b>Task:</b> Patrol division for spot fires and mop up any spots found.									
<b>Purpose:</b> Ensure no spot fires gain any size and become established.									
<b>End State:</b> Division remains in patrol status.									
8. Special Instructions:									
<ul style="list-style-type: none"> <li>- Confirm line locations and equipment use with READs. Report any new line locations to SITL.</li> <li>- Communicate sightings of large game to others working in the area, i.e. bears, elk, and moose.</li> <li>- Avoid all ground disturbance activities within known or probable cultural resource sites.</li> <li>- All resources must check-in with the division supervisor when traveling through any division.</li> <li>- Prioritization of all control or containment actions taken during the operational period in this Division will be at the discretion of the DIVS. Actions may have to be taken by the DIVS that are not enumerated in today's IAP. These actions would be a result of a significant change in actual or expected fire behavior over and above that anticipated at the time the IAP was prepared. These actions will be coordinated with and approved by the OSC whenever possible.</li> </ul>									
9. Division/Group Communication Summary									
Function	Frequency - RX	Frequency - TX	Tone	Channel	Comments				
Command	171.0500 N	165.3625 N	110.9	10	Repeater assignments are suggestions. If another repeater works better, use it.				
Tactical	169.4750 N	169.4750 N	110.9	5					
Air to Ground	168.5000 N	168.5000 N	CSQ	13					
Air Guard	168.6250 N	168.6250 N	CSQ	16					
Prepared by (RESL)		Approved by (PSC)		Date		Time			
Robert Rogers		Mike Kopitzke		9/16/17		2100			

ASSIGNMENT LIST			1. Branch	2. Division/Group		
			<b>Liberty</b>		<b>Uniform</b>	
<b>3. Incident Name</b>			<b>4. Operational Period</b>			
<b>Rice Ridge</b>			Date: 09/17/2017		Time: 0700 – 2100	
<b>5. Operations Personnel</b>						
<b>Operations Chief</b>	Mark Goeller (9/23)		<b>Division/Group Supervisor</b>	Harold Kibbe (9/19)		
<b>Branch Director</b>	Steve Creech (9/17)		<b>Air Operations Director Air Attack Supervisor</b>	Dennis Morton (9/24), John McKee (t) (9/24) Steve Dondero (9/24)		
<b>6. Resources Assigned This Period</b>						
Strike Team/Task Force/ Resource Designator	Last Shift	Leader	No. Pers.	Trans. Needed	Drop Off PT./Time	Pick Up PT./Time
<b>O-8725 TFLD</b>	<b>9/25</b>	<b>Ron Brown</b>	1	N	ICP/0700	ICP/2100
HC21A Mescalero	9/23	Clyde Davis	20	N	ICP/0700	ICP/2100
WFM Navajo Scouts #1	9/21	Adrian Gilmore	10	N	ICP/0700	ICP/2100
WFM Navajo Scouts #2	9/21	Neil Damon	10	N	ICP/0700	ICP/2100
E-8431 ENG6 Bishop # 6	9/19	Ruben Horseman	3	N	ICP/0700	ICP/2100
O-8553 SOFR	9/20	Jeffrey Kerr	1	N	ICP/0700	ICP/2100
O-8740 EMTF	9/28	AJ Stiffarm	1	n	ICP/0700	ICP/2100
<b>7. Control Operations</b>						
<b>Task:</b> Hold line and contain spots. Mop up one chain in from fire edge. Use existing roads to contain the fire's edge.						
<b>Purpose:</b> Check fire spread to the east protecting values around Placid and Seeley Lakes.						
<b>End State:</b> Primary lines are completed and contingency lines are identified that have high likelihood of success.						
<b>8. Special Instructions:</b>						
<ul style="list-style-type: none"> <li>- Confirm line locations and equipment use with READs. Identify/mitigate hazard trees. Report any new line locations to SITL.</li> <li>- Communicate sightings of large game to others working in the area, i.e. bears, elk, and moose.</li> <li>- Avoid all ground disturbance activities within known or probable cultural resource sites.</li> <li>- All resources must check-in with the division supervisor when traveling through any division.</li> <li>- Prioritization of all control or containment actions taken during the operational period in this Division will be at the discretion of the DIVS. Actions may have to be taken by the DIVS that are not enumerated in today's IAP. These actions would be a result of a significant change in actual or expected fire behavior over and above that anticipated at the time the IAP was prepared. These actions will be coordinated with and approved by the OSC whenever possible.</li> </ul>						
<b>9. Division/Group Communication Summary</b>						
Function	Frequency - RX	Frequency - TX	Tone	Channel	Comments	
Command	171.0500 N	165.3625 N	110.9	10	Repeater assignments are suggestions. If another repeater works better, use it.	
Tactical	168.2000 N	168.2000 N	110.9	1		
Air to Ground	168.5000 N	168.5000 N	CSQ	13		
Air Guard	168.6250 N	168.6250 N	CSQ	16		
<b>Prepared by (RESL)</b>		<b>Approved by (PSC)</b>		<b>Date</b>	<b>Time</b>	
Robert Rogers		Mike Kopizke		9/16/17	2100	



**ICS 220 Continued**

<b>10. TASK/ MISSION/ ASSIGNMENT (Type/ function includes: Air Tactical, Retardant, Recon, Personnel Transport, Bucket Operations, SAR, etc.</b>				
<b>TYPE/FUNCTION</b>	<b>NAME OF PERSONNEL OR CARGO (If applicable) or instructions for tactical aircraft</b>	<b>MISSION START</b>	<b>FLY FROM</b>	<b>FLY TO</b>
Buckets	All aircraft to support DIVS as needed	Varies	HLB	Fire
Recon Rice Ridge/Liberty	4HH	Varies	HLB	Fire

**Helibase/Helisports/ dipsites**

**Location NAME**

**LATITUDE**

**LONGITUDE**

**Elevation**

**HIGE/HOGE**

**REMARKS / HAZARDS**

See Pilot/Aviation Map for  
Helispots and Dip sites.

**Pilot Map QR Codes**

Rice Ridge



Liberty



[Click Here for Web Link](#)





INCIDENT RADIO COMMUNICATIONS PLAN			Incident Name LIBERTY			Date/Time Prepared 9/16/2017			Operational Period Date/Time 9/17/17 0700 - 2100		
Ch #	Function	Channel Name/Trunked Radio System Talkgroup	Assignment	RX Freq	N or W	RX Tone/NAC	TX Freq	N or W	Tx Tone/NAC	Mode A, D or M	Remarks
1	TACTICAL CHNL	TAC 1	DIV U	168.2000		110.9	168.2000		110.9	A	DIV U
2	TACTICAL CHNL	TAC 2	UNASSIGNED	166.7750		110.9	166.7750		110.9	A	UNASSIGNED
3	TACTICAL CHNL	TAC 3	DIV A/B/C/IA	168.2500		110.9	168.2500		110.9	A	DIUV A / B / C / IA
4	TACTICAL CHNL	TAC 4	DIV M	169.6375		110.9	169.6375		110.9	A	DIV M
5	TACTICAL CHNL	TAC 5	DIV T	169.4750		110.9	169.4750		110.9	A	DIV T
6	CMD REPEATER	CMD 6	LIBERTY ICP	171.1125		110.9	165.9875		110.9	A	CHARLIE POINT
7	CMD REPEATER	CMD 7	LIBERTY ICP	168.7000		110.9	170.9750		110.9	A	JACKO LOOKOUT
8	CMD REPEATER	CMD 8	LIBERTY ICP	173.0375		110.9	167.3250		110.9	A	PISTOL CREEK LOOKOUT
9	CMD REPEATER	CMD 9	LIBERTY ICP	169.6000		110.9	164.1875		110.9	A	BELMONT LOOKOUT
10	CMD REPEATER	CMD 10	LIBERTY ICP	171.0500		110.9	165.3625		110.9	A	GOLD CREEK LOOKOUT
11	TACTICAL CHNL	TAC 11	UNASSIGNED	166.7250		110.9	166.7250		110.9	A	UNASSIGNED
12	USFS	USFS MINERAL	USFS	164.7000			164.1000		146.2	A	USFS EAST ZONE - MINERAL
13	AIR GROUND	A/G CMD		168.5000			168.5000			A	A/G COMMAND
14	UNASSIGNED	UNASSIGNED	UNASSIGNED	N/A			N/A				UNASSIGNED
15	AIR AMBULANCE	TAN		155.3400			155.3400		156.7	A	AIR AMBULANCE
16	AIR GUARD	AIR GUARD	AIR GUARD	168.6250			168.6250		110.9	A	AIR GUARD
Prepared by (Communications Unit) DUSTIN SENE 406.581.9806 / COMMUNICATIONS UNIT 406.677.9821						Incident Location LOLO NF MT County _____ State MT Latitude _____ N Longitude _____ W					

The convention calls for frequency lists to show four digits after the decimal place, followed by either an "N" or a "W", depending on whether the frequency is narrow or wide band. Mode refers to either "A" or "D" indicating analog or digital (e.g. Project 25) or "M" indicating mixed mode. All channels are shown as if programmed in a control station, mobile or portable radio. Repeater and base stations must be programmed with the Rx and Tx reversed.

## FINANCE INFORMATION

EMERGENCY EQUIPMENT SHIFT TICKET				INVOICE POSTED BY (EQTR's initials)
<small>NOTE: The responsible Government Officer will complete and submit this form each day or shift.</small>				
1. AGREEMENT NUMBER AG-0343-B-11-7200		2. RESOURCE ORDER NUMBER E-101	3. CONTRACTOR (name) Dozers For Hire	
4. INCIDENT NAME/# River Rd - ID-PAF-00030		5. NO. OF OPERATORS 2	6. OPERATOR (name(s)) Bill Smith (dozer), John Smith (lowboy)	
7. ITEM DESCRIPTION & VIN/SERIAL # Dozer, Type 2, VIN # SLN03028				
9. DATE	10. EQUIPMENT USE [ACTUAL TIME WORKED]			11. REMARKS (down time and cause, problems, etc.)
MO/DA/YR	START	STOP	HRS/DAYS/MILES (circle one)	
			WORK	SPECIAL
8/1/2012	1000	2400	14	Dozer 100 mi
8/2/2012	0030	1000	9.5	Dozer 15 mi
12. EQUIPMENT STATUS a. Inspected and under agreement <input checked="" type="checkbox"/> b. Released by Government <input type="checkbox"/> c. Withdrawn by Contractor <input type="checkbox"/>				
14. PRINTED NAME AND TITLE BILL SMITH, OWNER		16. PRINTED NAME AND TITLE JOHN JONES Equipment Boss		17. DATE SIGNED 8/2/2012
<small>NSN 7540-01-119-5628 50297-102</small>			<small>OPTIONAL FORM 297 (Rev. 7-90) USDA/USDI</small>	

**SHIFT TICKETS**—All equipment time will be reported to the Finance Unit on a Emergency Equipment Shift Ticket. Shift tickets must be signed by a Division Supervisor or Section Chief.

**CLOCK HOURS**— Need to record clock hours on shift ticket even if equipment is paid a daily rate. This allows to ensure work/rest requirements are met.

**OPERATORS**—List names of all operators

**HEAVY EQUIPMENT TRANSPORT**—The contractor is responsible for transporting the heavy equipment to the incident. The transport may be retained at the incident for the sole purpose of transporting the equipment that was originally ordered. This must be documented on the shift ticket and in the Incident Action Plan.

If the transport is retained for transporting other equipment, the company owning the transport must have an existing agreement and must be ordered with a separate resource order number.

**DAILY RATE** - Payment will be made on basis of calendar days (0001 - 2400). Example shows equipment working 23.5 hours; however, this is broken out by calendar day which falls within the 16 hour daily average.

**DOUBLE SHIFT** equipment is staffed with a second set of operators. There will be no compensation for a double shift unless a separate operator is ordered in writing for the second shift. Agency personnel at the Section Chief level may, by resource order, authorize a second operator if needed during the assignment. In the example above the equipment would not be paid for a double shift.



## Human Resource Message

*Attitude is everything*



*so pick a good one* 

You can't have a good day with a bad attitude, and you can't have a bad day with a good attitude!

A leader's attitude is caught by his or her followers more quickly than his or her actions. (John C. Maxwell)

Your attitude is like a price tag, it shows how valuable you are.

A bad attitude is like a flat tire, you can't go anywhere until you change it.

Peace begins with a smile. (Mother Teresa)

Sandra M. Padilla, Human Resource Specialist  
406-366-2377 (Call or text)

**RICE RIDGE FIRE PHONE LIST**  
**Northern Rockies Team 1 – Poncin / Goicoechea**  
**09/17/2017**

<b>Greg Poncin, Incident Commander</b>	<b>406-250-4439</b>
<b>Mike Goicoechea, Deputy Incident Commander</b>	<b>406-865-0975</b>
<b>Kay Jaquith, Liaison Officer</b>	<b>406-531-9123</b>
<b>Rob Taylor, Liaison Officer</b>	<b>406-544-4679</b>
<b>Gerald Vickers, Safety Officer</b>	<b>443-614-4358</b>
<b>Ivan Cupp, Safety Officer</b>	<b>405-990-7155</b>
<b>Brett Levi Clymer, Medical Unit Leader</b>	<b>417-658-5155</b>
<b>Lisa Radosevich-Craig, Public Information Officer</b>	<b>218-349-7918</b>
<b>Mike Cole, Public Information Officer</b>	<b>406-239-3845</b>
<b>Brent Olson, Operations Chief</b>	<b>406-249-4994</b>
<b>Mark Goeller, Operations Chief</b>	<b>918-207-9492</b>
<b>Scott Schrenk, Operations Chief (t)</b>	<b>406-250-0354</b>
<b>Drew Daily, Structure Protection Specialist</b>	<b>405-431-9476</b>
<b>Dennis Morton, Air Operations</b>	<b>406-660-2318</b>
<b>John McKee, Air Operations (t)</b>	<b>406-370-7028</b>
<b>Charlie Showers, Logistics Chief</b>	<b>406-370-3787</b>
<b>Roylene Gaul, Logistics Chief</b>	<b>406-546-9320</b>
<b>Jim Evanoff, Deputy Logistics Chief</b>	<b>406-223-8660</b>
<b>Keith Walters, Logistic Section Chief 2</b>	<b>336-263-0681</b>
<b>Tony Jeffers, Communications</b>	<b>303-904-4016</b>
<b>Rice Ridge Communications</b>	<b>406-677-9821</b>
<b>Mike Kopitzke, Deputy Planning Section Chief</b>	<b>406-544-1464</b>
<b>Demobilization Hard Line</b>	<b>406-677-9817</b>
<b>Shirley Ehmann, Finance Section Chief</b>	<b>406-360-1802</b>
<b>Scott Tomson, Lolo NF READ</b>	<b>406-880-0724</b>
<b>Park Fire – Planning Section</b>	<b>406-363-3409</b>

09/17/2017

TENTATIVE RELEASE

RICE RIDGE US-MT-LNF-001464

**CREWS**

C-135            0000                            (HC1)                    CREW - T1 - LONE PEAK IHC

**EQUIPMENT**

E-51	0000	(ENG6)	SILVERTIP FORESTRY
E-62	0000	(WTS2)	BILLINGSLEY
E-104	0000	(ENG3)	APEX
E-130	0000	(WTS3)	DUSTSTOP
E-143	0000	(ENG4)	J3 CONTRACTING ENG T4
E-145	0000	(ENG4)	LONE WOLF WILDFIRE
E-147	0000	(ENG4)	FIRE CONTROL RES LLC -ENGINE
E-148	0000	(ENG4)	FYR FLY
E-202	0000	(TCTL)	BULL CREEK
E-203	0000	(TCTL)	BULL CREEK
E-267	0000	(TCTL)	LOG TRK JIM MEYER
E-268	0000	(TCTL)	LOG TRUCK RH LOADING
E-279	0000	(TCTL)	HULETT
E-280	0000	(TCTL)	EUCHRE MOUNTAIN LOGGING
E-298	0000	(TDMP)	PATTERSON ENTERPRISES
E-379	0000	(WTS2)	SPEARFISH
E-390	0000	(ENG6)	BRENTESON RANCH INC
E-423	0000	(EXCA)	WESTSLOPE EXCAVATION LLC
E-449	0000	(WTS2)	BLACKTAIL FIRE SERVICES
E-502	0000	(WTS3)	MISSOULA RURAL FIRE DISTRICT
E-545	0000	(WTS2)	MCCALL FPD
E-616	0000	(ENG6)	METAL WORKS OF MONTANA INC.

09/17/2017

TENTATIVE RELEASE

RICE RIDGE US-MT-LNF-001464

**OVERHEAD**

O-897	0700	(TFLD)	DOWNEY, JIM
O-476	0700	(TFLD)	SPENCE, ROBERT S
O-445	0800	(SEC1)	LEGAULT, ALBERT JOSEPH
O-595	2000	(DIVS)	AGNER, JON
O-448	2000	(HEQB)	BURK, JON
O-569.24	2000	(MEDL)	CUMMINGS, JEFFREY KIM
O-589	2000	(FFT1)	HORNING, DREW
O-822	2000	(PIO2)	MARTIN, MICHAEL A
O-474	2000	(EMTF)	MCDOUGAL, SHERRI
O-752	2000	(PIOF)	NORDEEN, MARY E
O-656	2000	(HEQB)	SWANGER, CLAYTON W
O-782	2000	(PIOF)	WALKER, OLIVIA
O-416	2200	(SOF2)	MALLOY, BRUCE

**09/17/2017**

**TENTATIVE RELEASE**

**LIBERTY US-MT-FHA-000105**

**EQUIPMENT**

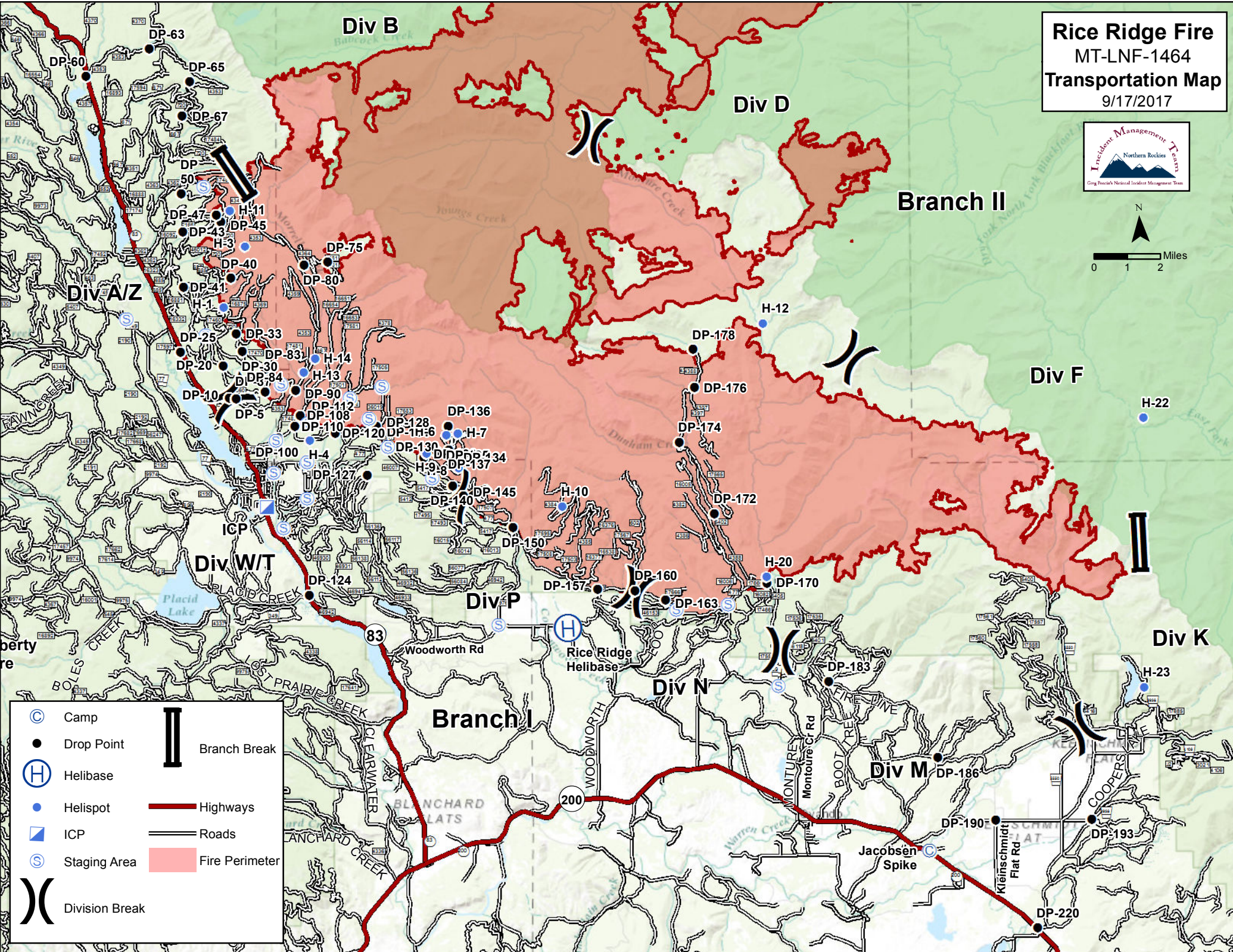
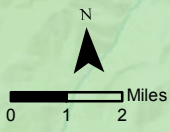
<b>E-398</b>	<b>0800</b>	<b>(SKDS)</b>	<b>SOFT TRACK ATTACK, INC. - A-413</b>
<b>E-426</b>	<b>0800</b>	<b>(WTS2)</b>	<b>THOMPSON AND SONS INC. -</b>
<b>E-419</b>	<b>0830</b>	<b>(EQD)</b>	<b>HE TASK FORCE - GVC003 -</b>
<b>E-434</b>	<b>0830</b>	<b>(ENG6)</b>	<b>ENG6 FLAME CHASER</b>
<b>E-356</b>	<b>0900</b>	<b>(ENG5)</b>	<b>ENG5 MOUNTAIN CAMEL</b>

**OVERHEAD**

<b>O-590</b>	<b>1200</b>	<b>(PIO2)</b>	<b>BARBIAN, ALAN G</b>
--------------	-------------	---------------	------------------------



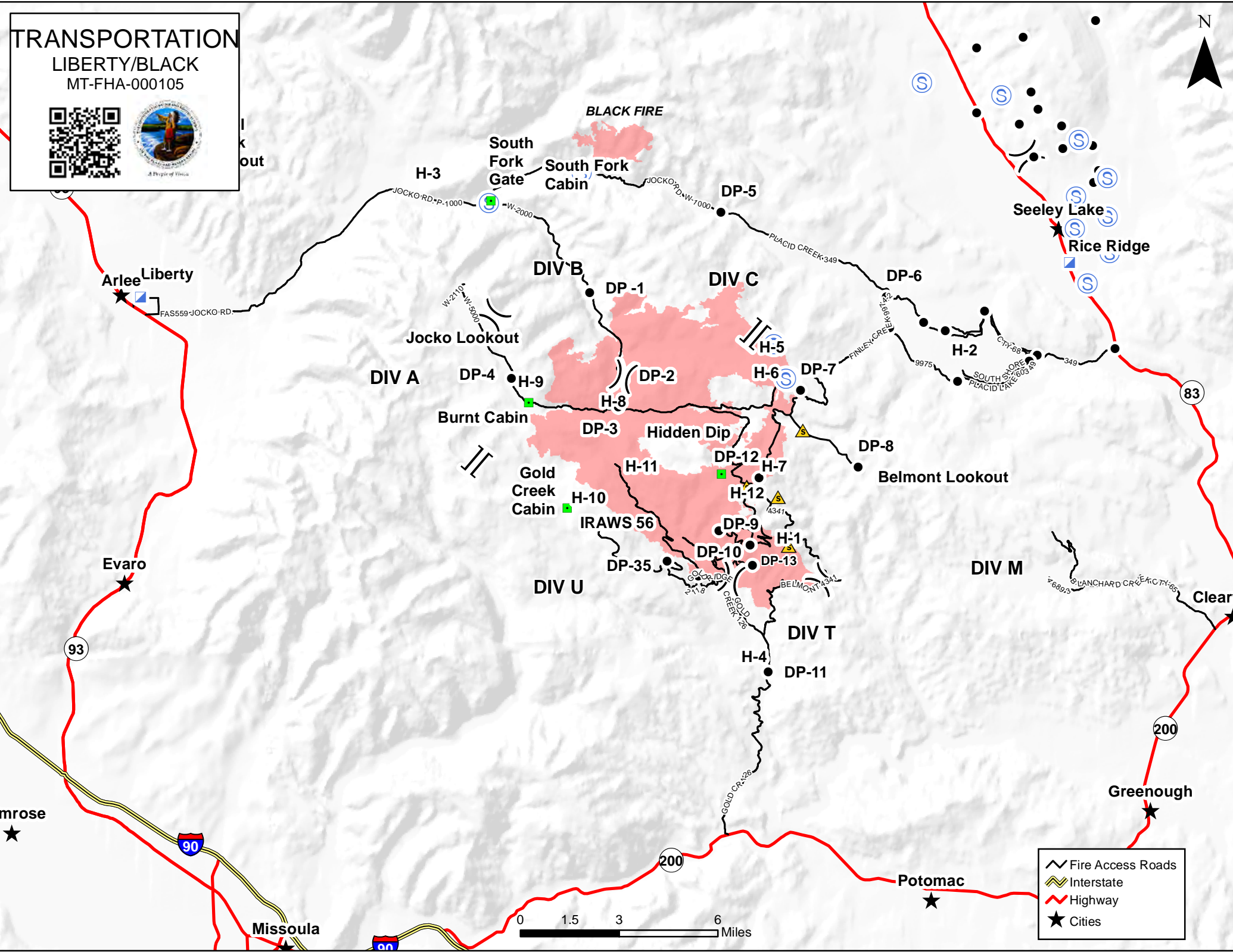
**Rice Ridge Fire**  
 MT-LNF-1464  
**Transportation Map**  
 9/17/2017



	Camp		Branch Break
	Drop Point		Highways
	Helibase		Roads
	Helispot		Fire Perimeter
	ICP		
	Staging Area		
	Division Break		



# TRANSPORTATION LIBERTY/BLACK MT-FHA-000105

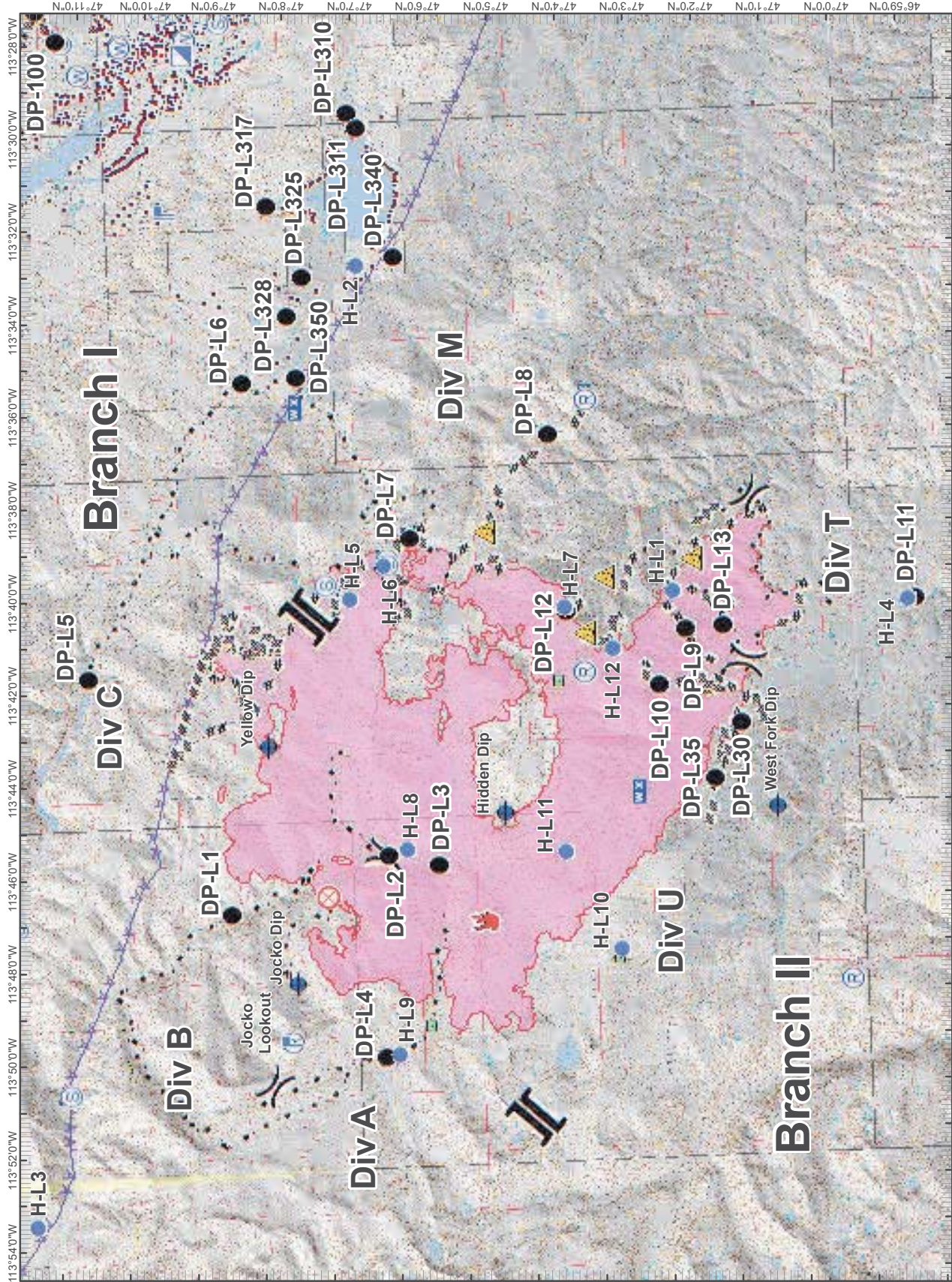


- Fire Access Roads
- Interstate
- Highway
- Cities



**Liberty Fire**  
 MT-FHA-000105  
 IAP Map - Day Shift  
 9/17/2017  
 NAD 1983 UTM Zone 11N

- Dip Site
- Drop Point
- Fire Location
- Fire Origin
- Gate
- Helispot
- ICP
- Landmark
- Lookout
- Mobile Weather Unit
- Repeater
- Safety Zone
- Staging Area
- Water Source
- Division Break
- Branch Break
- Structures
- Completed Dozer Line
- Completed Hand Line
- Completed Road as Hand Line
- Completed Road Line
- Completed Plow Line
- Aerial Hazard
- Wildfire Daily
- Fire Perimeter



*DIVISION OPERATIONS MAPS:*



Rice - Alpha/Zulu



Rice - Whiskey/Tango



Rice - Mike/Foxtrot/Kilo



Rice - Papa/November



Rice - Structure Protection East



Rice - Structure Protection West



Rice - Operations



Liberty - QR Folder



<b>1. Incident/Project Name</b>		<b>2. Operational Period</b>	
Rice Ridge Fire		Date/Time September 17, 2017 Day-0600-2000 Night-1800-0700	
<b>3. Ambulance Services</b>			
Name	Complete Address	Phone & EMS Frequency	Advanced Life Support (ALS) Yes No
Seeley Lake 2 – Incident Ambulance. Assigned to incident 0600-2200 hrs (after hours use 911)	Rice Ridge Fire	Contact on Rice Ridge Command	X
Seeley Lake Fire/EMS	200 Firehouse Dr. Seeley Lake, MT 59868	911	X
Missoula Emergency Services	1200 Burlington Ave. Missoula MT 59801	(406) 549-2325	X

<b>4. Air Ambulance Services</b>		
Name	Phone	Type of Aircraft & Capability
Life Flight Network, St. Patrick Hospital Missoula, MT.	County 911 Preferred or Dispatch: 800-232-0911	Air Ambulance Nurse & Paramedic, NVG Capable MT-EMS A/G Tan 155.340 TX Code Guard 156.7
Two Bear Aviation Whitefish, MT (Rescue and rendezvous only)	County 911 Preferred or Dispatch: 406-260-4319	Air Ambulance Bell 429. 280 Feet Hoist Capable 600 lbs, NVG Capable MT-EMS A/G Tan 155.340 TX Code Guard 156.7
ALERT Air Ambulance Kalispell, MT	County 911 Preferred or Dispatch: 406-260-4319	Air Ambulance Bell 407, NVG Capable MT-EMS A/G Tan 155.340 TX Code Guard 156.7

<b>5. Hospitals</b>								
Name Complete Address	GPS Datum – WGS 84 Coordinate Standard Degrees Decimal Minutes DD° MM.MMM' N - Lat DD° MM.MMM' W - Long		Travel Time Air Gnd		Phone	Helipad Yes No		Level of Care Facility
	Lat:	Long:						
Seeley Swan Medical Center 3050 Hwy 83 Seeley Lake, MT 59868 M-F 8-5	N 47° 9.860'	W 113° 28.511'		1 hr	406-677-2277	<input checked="" type="checkbox"/>	<input type="checkbox"/>	Clinic
	VHF:							
Community Medical Center 2827 Ft. Missoula Road Missoula, MT 59804	N 46° 50.909'	W 114° 02.865'	35 min	1.5 hrs	406-327-4171 ext. 1	<input checked="" type="checkbox"/>	<input type="checkbox"/>	Level 3 Trauma Center
	VHF:							
Providence St. Patrick Hospital 500 W. Broadway Missoula, MT 59802	N 46° 52.524'	W 113° 59.969'	35 min	1 hrs	406-329-5635 ext. 1	<input checked="" type="checkbox"/>	<input type="checkbox"/>	Level 2 Trauma Center
	VHF:							
Harbor View Medical Regional Burn Center 325 Ninth Ave Seattle, WA 98104	N 47° 36.239'	W 122° 19.390'	2 hrs	8 hrs	888-731-4791	<input checked="" type="checkbox"/>	<input type="checkbox"/>	Level 1 Trauma & Burn Center
	VHF:							

<b>Special Medical Emergency Procedures For Fire Line and Camps</b>	
Communications can contact MEDL at any time. Med unit staffed after hours for <i>emergencies</i>	
<u>In-Camp Care</u>	<u>Line Emergencies</u>
Minor Injuries or illnesses	Announce "Medical Emergency" on Command Channel. • Refer to "9 line" for medical incident reporting
<ul style="list-style-type: none"> <li>Seek Aid directly at the ICP Medical Unit</li> <li>Unit Open 0530 hrs to 2200 hrs</li> </ul>	
Moderate to Severe Injuries or Illnesses	If emergency ambulance is needed, communications will contact Cody on Command frequency and request they call 911. Non emergent ambulance contact at above number.
<ul style="list-style-type: none"> <li>Contact Communications or Med Unit directly</li> </ul>	
<b>Start of Shift Emergency Pre-planning</b>	For Air Evacuations the following additional information will be needed:  <i>Give Lat / Long, Ground Contact, Describe the terrain, elevation, and patients temp if possible.</i>
Notify your Div Sup of EMT's and equipment you have available for response if needed.	

6. Division   Branch   Group	Area Location Capability	
<b>ICP</b>	EMS Responders & Capability:	MEDL Brett Levi Clymer, MEDL(T) Emily Ellick-Flettre, IMSM Katie Hamilton
	Equipment Available on Scene:	
	Medical Emergency Channel:	Command OR Logs Radio
	ETA for Ambulance to Scene:	On scene
<b>DIV A-Z</b>	EMS Responders & Capability:	EMTF Rodney Stubbs EMTF Noland Yellow-Kidney
	Equipment Available on Scene:	Trauma Bag, O2
	Medical Emergency Channel:	Command
	ETA for Ambulance to Scene:	
	Air: Ground:	15 minutes
<b>DIV W/T</b>	Approved Helispot:	Seeley Airstrip
	EMS Responders & Capability:	EMTF Justin Spicer
	Equipment Available on Scene:	Trauma Kit, BLS Supplies
	Medical Emergency Channel:	Command
	ETA for Ambulance to Scene:	
<b>DIV P</b>	Air: Ground:	15 minutes 20 minutes
	Approved Helispot:	Seeley airstrip
	EMS Responders & Capability:	EMTF Thane Cummings
	Equipment Available on Scene:	Trauma Kit, BLS supplies
	Medical Emergency Channel:	Command
<b>Div M</b>	ETA for Ambulance to Scene:	
	Air: Ground:	15 minutes 20 minutes
	Approved Helispot:	Rice Ridge Helibase
	EMS Responders & Capability:	EMTF Sherri Mcdougal
	Equipment Available on Scene:	Trauma Kit, BLS supplies, Oxygen
<b>Div N</b>	Medical Emergency Channel:	Command
	ETA for Ambulance to Scene:	
	Ground: Air:	30-40 minutes
	Approved Helispot:	Rice Ridge Helibase
	EMS Responders & Capability:	EMTF Randy Clark
<b>Heavy Equipment</b>	Equipment Available on Scene:	Trauma Supplies, BLS Kit
	Medical Emergency Channel:	Command
	ETA for Ambulance to Scene:	
	Ground: Air:	15 minutes 20 minutes
	Approved Helispot:	
<b>Repair Group</b>	EMS Responders & Capability:	EMTF Raymond Staples
	Equipment Available on Scene:	Trauma Supplies, Oxygen, Backboard
	Medical Emergency Channel:	Command
	ETA for Ambulance to Scene:	
	Ground: Air:	15 minutes 20 minutes
<b>Repair Group</b>	Approved Helispot:	Seeley Airstrip

<b>LIB-DIV C</b>	EMS Responders & Capability:	Medic 6
	Equipment Available on Scene:	ALS Ambulance
	Medical Emergency Channel:	Command
	ETA for Ambulance to Scene:	
	Air: Ground	
	Approved Helispot:	Seeley Airstrip
<b>LIB-DIV M</b>	EMS Responders & Capability:	EMTF Adams
	Equipment Available on Scene:	Trauma Kit, BLS Supplies
	Medical Emergency Channel:	Command
	ETA for Ambulance to Scene:	
	Air: Ground:	
	Approved Helispot:	Seeley Airstrip
<b>LIB-DIV T</b>	EMS Responders & Capability:	EMTF Loon
	Equipment Available on Scene:	Trauma Kit, BLS supplies
	Medical Emergency Channel:	Command
	ETA for Ambulance to Scene:	
	Air: Ground:	
	Approved Helispot:	Seeley Airstrip
<b>LIB-DIV U</b>	EMS Responders & Capability:	EMTF Stiffarm
	Equipment Available on Scene:	Trauma Kit, BLS supplies, Oxygen
	Medical Emergency Channel:	Command
	ETA for Ambulance to Scene:	
	Air: Ground	

<b>1. Prepared By (Medical Unit Leader)</b>	<b>2. Date/Time</b>	<b>3. Reviewed By: Safety Officer</b>
Brett Levi Clymer MedL Emily Ellick-Flettred MedL(t)	9/17/2017 1900	Gerald Vickers

## Medical Incident Report

Use items 1 through 9 to communicate situation to communications/dispatch.

### 1. CONTACT COMMUNICATIONS/DISPATCH:

Example: "Northeast Dispatch, Division Alpha – standby for Priority Medical Incident Report." (If life threatening, request designated frequency be cleared for emergency traffic only.)

### 2. INCIDENT STATUS: Provide incident summary and command structure:

Nature of Injury/Illness:		Describe the injury (Example: broken leg with bleeding)
Incident Name:		Geographic Name + Medical (Example: Trout Meadow Medical)
Incident Commander:		Name of Incident Commander
Patient Care:		Name of care provider (Example: EMT Denney)

### 3. INITIAL PATIENT ASSESSMENT: Complete this section for each patient. This is only a brief, initial assessment. Provide additional patient information after completing this 9-Line Report.

Number of patients: \_\_\_\_\_ ( \_\_\_ male, \_\_\_ female)    Age(s): \_\_\_\_\_ Weight(s): \_\_\_\_\_

Conscious?             YES     NO = **MEDEVAC!**

Breathing?             YES     NO = **MEDEVAC!**

Mechanism (cause) of injury \_\_\_\_\_

### 4. SEVERITY OF EMERGENCY

### TRANSPORT PRIORITY

<input type="checkbox"/> <b>URGENT - RED:</b> 1. Airway obstruction. 2. Difficulty breathing. 3. Major blood loss. 4. Cardiac chest pain. 5. Crush injury to the chest. 6. Penetrated object. 7. Open fracture. 8. 2° or 3° burn more than 4 palm sizes. 9. Anaphylactic shock from bee sting. 10. Head or spine injury.	Ambulance or MEDEVAC helicopter. Evacuation need is <b>IMMEDIATE</b> .
<input type="checkbox"/> <b>PRIORITY - YELLOW:</b> 1. Closed fracture. 2. Significant trauma; Lacerations and bleeding not controlled by pressure. 3. Not able to walk. 4. 2° or 3° burn, no more than 1 or 2 palm sizes.	Ambulance or consider air transport if at remote location. Evacuation may be <b>DELAYED</b> .
<input type="checkbox"/> <b>ROUTINE - GREEN:</b> 1. Small area abrasions or lacerations. 2. Bleeding controlled by pressure. 3. Minor sprain. 4. General sickness.	Non-Emergency. Evacuation considered <i>Routine of Convenience</i> .

### 5. TRANSPORT PLAN:

Air Transport: (Agency Aircraft preferred)     Helispot             Short-haul/Hoist     Life Flight             Other

Ground Transport:                                     Self-Extract             Carry-Out             Ambulance             Other

### 6. ADDITIONAL RESOURCE/EQUIPMENT NEEDS:

Paramedic/EMT     Crew(s)     Trauma Bag     Medications  
 IV/Fluid(s)     SKED/Backboard/C-Collar     Burn Sheet(s)     Oxygen             Cardiac Monitor/AED     Other

### 7. COMMUNICATIONS:

Function	Channel Name / #	Receive (Rx)	Tone/NAC*	Transmit (Tx)	Tone/NAC*
Command					
Air-Ground					
Tactical					

### 8. EVACUATION LOCATION:

\*NAC = for digital radio system

Lat/Long (Datum WGS84):	
Patient's ETA to Evacuation Location:	
Helispot/Extraction Size and Hazards:	

### 9. CONTINGENCY: (If primary options fail, what actions can be implemented in conjunction with primary evacuation method?)

--

# ASSIGNMENT-SPECIFIC MEDICAL EMERGENCY ACTION PLAN

## **Pre-Planning for today's assignment – See Page 2 IRPG**

What are the likely hazards that could cause injuries? What kind of severe injuries?		
Who is the likely in-charge DIVS or overhead for an emergency in your assigned area today? (i.e. "Division Zulu")		
Who are the Medical personnel assigned to your part of the incident? What are their capabilities?		
Other Emergency Responders: fire dept, crash rescue, ambulance?		
Communications: Command channel, Air to Ground, Medical helicopters, local rescue/medical?		
Transportation methods available	Ground vehicle, drop point, coordinates, travel route?	
	Aircraft I.D, helispot names, coordinates? Hoist capable, internal transport	
	Other available methods - contingency	
Most likely workforce for evacuation		

## **Response checklist**

### **Who takes charge?**

- DIVS or designated Overhead manages the overall scene and evacuation process.
- Medical personnel and emergency responders manage patients and conduct rescues.
- OPS and IC make command decisions so the emergency can be given full attention and management. They continue to manage ongoing incident operations.

### **Response sequence:**

- First, secure the scene and protect responders and patients from further injury.
- Clear the Command channel for "Emergency Traffic only" if this is a critical emergency. If not, inform Communications of non-critical-emergency status and use normal communications.
- Contact closest Medical personnel and DIVS or designated Overhead for response.
- Notify Communications to initiate Accident Action Plan response.

### **Information for Communications: (See Medical Incident Report, page 108, IRPG)**

- Type and extent of injuries?
- Airway or breathing problems? Serious bleeding?
- Is an EMT present or needed? Are Paramedics (Advanced Life Support) needed?
- Specific location of patients (Lat/Long, access route, DP#, helicopter Landing Zone)?
- What type of transport is needed? Helicopter medevac, hoist, ambulance or ground transport?
- Name of contact person in charge of the scene.
- Do not use names of patients at any time.
- Medical Emergency Responders confer with Medical Unit Leader and DIVS or designated Overhead to determine if this is a critical emergency and what type of transport is needed.





