

# Highway 200 Complex

Lolo National Forest  
Kootenai National Forest

## *INCIDENT ACTION PLAN*

September 17, 2017

Day Shift

0700-2000

MT-LNF-001811

P1LBG4 (0116)



<https://sites.google.com/site/leachimt2/home>



ORGANIZATIONAL STRUCTURE CHART		9. Operations Section	
1. Incident Name <b>Highway 200 Complex</b>		Planning Ops	Jud Hammer
		Line Ops	Corey Buhl
2. Date 09/17/2017		Branch I – Paul Roose	
5. Incident Commander and Staff		Division Charlie	Brian Anderson, Jeff Flick (t)
Incident Commander	Irv Leach	Division Foxtrot	Dan Chambers, Eric Hold (t)
Deputy	Joe Brabender	Division Tango	RJ Hannah
Safety Officer	Marvin Carpenter, Jim Freestone	Division Uniform	Rick Witzke
Safety Officer	Steve Wyatt, Scott Belknap	Division Victor	Lee Hahnkamp
Information Officer	Gregg DeNitto	Branch I Structure	Zeke Seabright
Information Officer	Benjamin Brack	Reader Fire	IC5: Brady Thompson
Liaison Officer	Rich Cowger		
Human Resource Spec	Lauren Dorosz, Joan Silva (t)		
Agency	<b>Name</b>		
USFS KNF	Matt Davis		
USFS LNF	Kurt Steele		
Sanders County Comm	Tony Cox	Branch II – Don Hammack, Fred Thompson (t)	
Sanders County Sheriff	Bill Naegeli	Division Whiskey	Mark Duffey, Paul Amundson (t)
KNF READ	Brendon Naples	Division X-Ray	Danny Lemer
LNF READ	Carly Lewis	Division Zulu	Dan Helterline
7. Planning Section		Branch II Structure	Hunter Bell, Craig Williams
Chief	Rob Gump	Heavy Equipment	Mike West
Status Check-In	Jeff Durkin (t)		
Resources Unit	Pam Cooper		
Situation Unit	Kevin Hyatt (t)		
Demobilization Unit	Joe Read		
Incident Technology	Dennis Shultz, Russel Virgilio		
GIS Specialist	Nate Meyer, Jeff Erwin, Jason Duke		
Fire Behavior Analyst	Eric Trimble		
Incident Meteorologist	Bob Hoenisch, Jon Pelton		
Training Specialist	Vanessa Hanson		
Field Observer	Michael Pennacchio, Dylan Hillyer	A. Air Operations Branch	
Field Observer	Matt Mahe, David Sappington	Branch Director	Bill Sprauer
8. Logistics Section		Air Tactical Supervisor	
Chief	Walt Schopfer, LeRoy Evans (t)	Helibase Manager	
Supply Unit	Josh King	Air Support Supervisor	Henry Gilliland
RCDM	Joe Read	Helicopter Coordinator	
Facilities Unit	Roger Harris	Air Tanker Coordinator	
Ground Support Unit	Russ Edelen		
Communications Unit	Ken Haynes	10. Finance	
Comm. Specialist	Kenneth Downey	Chief	Kendra Sabo
Radio Operator	Amy Kiesbuy	Personal Time Recorder	Julie Edelen
Medical Unit	Teri Miller	Equipment Time Recorder	Josette Chavez (t)
Food Unit	Laura Roundine	Cost Unit	Darla Pindell
Ordering Manager	Don Lantz (t), Chris Cloninger (t)	Procurement	
Security Manager	Ray Paige	Time	Patty Wilson
Base Camp Manager			
Prepared by: Pam Cooper RESL			



# Highway 200 Complex - Weather Forecast



**FORECAST NO:** 16  
**PREDICTION FOR:** Sunday Day Shift  
**SHIFT DATE:** September 17<sup>th</sup>, 2017  
**TIME AND DATE**  
**FORECAST ISSUED:** September 16<sup>th</sup>, 2017 @ 1900 MDT

**NAME OF FIRE:** Highway 200 Complex  
**UNIT:** Lolo/Kootenai National Forests  
**SIGNED:**

*Jim Patton, IMET*

### WEATHER DISCUSSION:

High pressure will remain dominant today with another day of warming and drying as temperatures warm back to near normal. Winds will also increase with gusts up to 20 mph on the ridges this afternoon and evening. The warming and drying will be short-lived, however. Another trough will move into the Northern Rockies and remain in place for much of the upcoming week. The first disturbance to move through this trough will bring a good chance for a wetting rain on Monday.

### Weather Forecast for Today:

**Weather:** Mostly sunny, with increasing mid and high level clouds after 1500.

**High Temperature...** Ridges: 53-58° / Mid-slopes:58-63° / Valleys: 64-69°

**Min RH.....**28-35% upper-slopes and ridges/20-25% valleys

#### **20-FOOT WINDS:**

- **Ridgetop and Aligned Canyons...**Southwest 10-15 mph, with gusts up to 20 mph.
- **Slope/Valley...**Upslope/upvalley 4-8 mph, except southwest to west around 10 mph with gusts to 15 mph on south and west slopes.

**CWR (>=0.10")....**0%

**LAL....**1

**Haines Index...**4 (Low)

**Mixing Height:** 10,000ft MSL

### Weather Forecast for Tonight:

**Weather:** Increasing clouds, a chance of showers toward dawn.

**Low Temperature...**37-44°

**Max RH.....**75-85% mid-slopes/ridges, 70-80% valleys.

#### **20-FOOT WINDS:**

- **Ridgetop.....** Southwest 10 to 15 mph, then south southwest 5-10 mph with gusts to 15 mph.
- **Slope/Valley.....**Down-slope/down-valley 3 to 6 mph.

**CWR (>=0.10")....**10%

**LAL....** 1

**Stability:** Nocturnal inversion developing by 2200.

### Outlook for Monday:

**Weather:** Cloudy with showers in the morning, then mostly cloudy with a chance of showers late.

**High Temperature...** Ridges: 42-47° / Mid-slopes 47-52° / Valleys: 53-58°

**Min RH.....**43-50% mid-slopes and ridges/35-43%valleys

#### **20-FOOT WINDS:**

- **Ridgetop and Aligned Canyons...**Southwest 10-15 mph, with gusts up to 20 mph.
- **Slope/Valley...**Upslope/upvalley 3-6 mph, becoming southwest 5-10 mph.

**CWR (>=0.10")....** 60%

**LAL....**1

**Haines Index...**3 (Very Low)

**Mixing Height:** 9000ft MSL

### EXTENDED OUTLOOK for Tuesday through Thursday:

An upper level trough will remain across the Western Conus and Northern Rockies. Several disturbances will move through the trough and affect the area during this time. This will lead to mostly cloudy to cloudy skies, well below normal temperatures, and high min rh. Good chances for rain (rain or snow above 5000') are expected from time to time with additional wetting rains probable.

Local RAWS Station Observation QR Code:



- iRAWS-27 H-10 (Sunrise Fire) at 5960 ft
- RAWS Lolo Portable #3 at 5256 ft
- RAWS PARDEE at 4,569 ft
- iRAWS-47 Larch Saddle 4200 ft
- RAWS Thompson Falls at 2246 ft
- RAWS Plains at 2481 ft

## FIRE BEHAVIOR FORECAST

<b>FORECAST NUMBER:</b> 16	<b>INCIDENT TYPE:</b> Wildfire
<b>FIRE NAME:</b> Highway 200 Complex	<b>OPERATIONAL PERIOD:</b> 9/17/2017 Sunday
<b>DATE ISSUED:</b> September 16, 2017	<b>TIME ISSUED:</b> 1930
<b>UNIT:</b> MT-LNF	<b>PREPARED BY:</b> Eric Trimble - FBAN

### INPUTS

**WEATHER SUMMARY:** Sky Weather: Mostly Sunny with increasing clouds after 1400  
**Temps:** 58-68°F. **RH:** Valleys: 20-25%; **Ridges:** 28-35%; **Haines:** 4 (Low). **LAL:** 1 **CWR:** 0%  
**Winds:** **Ridges:** SW 10-15 mph w/gusts to 20 mph. **Valleys:** Upslope 4-8 mph; SW 10 mph gust to 15 mph.

**See the attached Fire Weather Forecast**

**FUELS:** Mixed conifer stands of red cedar, western hemlock and grand fir within the protected stream bottoms; Ponderosa pine, Douglas-fir, and western larch mid-slopes; and lodgepole pine, mountain hemlock and sub-alpine fir in the higher elevations. Crown and ladder fuels are discontinuous within old harvest and burn units and lower elevation rock outcroppings.

- Live shrub/grass fuels are cured and will support active surface fire. Conifer seedlings/saplings will support active surface fire with the potential to carry fire into adjoining crown fuels.
- Primary fire spread will be terrain and fuels driven.

**Fine Fuels 5-8%, no change; 100hr (1"-3") 10%, no change; 1000hr (3"+) 9%, up 2%;**

**Forecast ERC at Plains RAWS: 15; below the 75<sup>th</sup> percentile.**

**Forecast ERC at Thompson Falls RAWS: 61; below the 97<sup>th</sup> percentile.**

### OUTPUTS - FIRE BEHAVIOR

#### GENERAL:

Heavy dead/down fuels are still very dry and remain the main driver of fire spread. By Monday a pattern of successive moisture events will significantly reduce both fire intensity and spread.

Max backing spread of 1-2 ft/min with flames 2-3 ft. Surface head fire potential of 15-20 ft/min rates of spread with 4-8 ft. flame lengths. Considerably higher flame lengths expected with torching and crowning. Spotting is generally expected to be short range (<1/4 mile).

**Probability of Ignition (PIG): 40-60%** during the peak of the burning period.

#### SPECIFIC:

**Reader** – Primarily creeping/smoldering.

**Deep Creek** – Expect limited surface fire activity with a potential for group-tree torching/spotting and short uphill runs. Fire will continue to consume interior fuels and move north and east of Lone Tree Peak as well as downslope into the Charred Creek drainage.

**Cub Creek** – Expect limited surface fire activity with a potential for single to small group-tree torching and spotting and short uphill runs. Fire will continue to consume interior fuels and move downslope into Haines Gulch, and the Big and Little Beaver drainages.

**Sheep Gap** – Expect limited surface fire with a potential for single to small group-tree torching/spotting and short uphill runs. Fire will continue to consume interior fuels back downslope and to the east within the West Fork Combest Creek drainage.

**AIR OPERATIONS:** Expect favorable air operations by 1300.

**SAFETY:** Maintain good situational awareness with the transition to warmer/dryer conditions. Higher winds and full sun can transform a creeping/smoldering fire to an active surface or crown fire.

# HEALTH AND SAFETY MESSAGE

***SAFETY** starts with **YOU***

We are **ALL** accountable for **SAFE** behaviors  
September 17, 2017

INCIDENT: HWY 200 Complex

DATE: September 17, 2017

## **Major Hazards and Risks:**

- **Complacency/Attitude:** Stay focused on task at hand; keep busy, stay informed of adjacent resources on what they are doing and where, watch for weather changes and be ready for new assignments! Maintain a positive attitude and use good common sense.
- **Mop-up Hazards:** Stump holes, snags, uneven walking surfaces, rolling material under foot and low hanging branches – identify and mitigate known hazards.
- **Driving Hazards:** Dusty/washboard roads, livestock/wildlife, other vehicles and mechanical deficiencies. Drive slow, particularly when passing others to let the dust settle, wear seatbelts, lights on, clean windshields and windows, use backers and block tires. Check radiators and air filters.

**Quote for the day:** “Once is happenstance. Twice is coincidence. Three times is enemy action.” Auric Goldfinger

**BE AWARE OF THE ENEMY!**

## **HAZARDOUS ATTITUDES/COMPLACENCY**

Invulnerable – That can’t happen to us

Anti-authority – Disregard of the team effort

Impulsive – Do something even if it’s wrong

Macho – Trying to impress or prove something

Complacent – Just another routine fire

Resigned – We can’t make a difference

Group Think – Afraid to speak up or disagree

**Attitude is 10% what happens to us,**

**and 90% is how we react to it.**

**Complacency is the enemy of Safety.**



### **DEMOB**

DRIVE SAFELY

HEADLIGHTS ON

SEATBELTS UTILIZED

FOLLOW THE POSTED SPEED

TAKE BREAKS

DO NOT DRIVE WHILE SLEEPY

DO NOT TEXT OR USE PHONE WHILE DRIVING

**ARRIVE BACK HOME SAFELY!!!**

**Thanks from your Safety Team!!**

Marvin, Jim, Steve, and Adam

6 Minutes for Safety

Tailgate Safety Briefings

ASSIGNMENT LIST		1. Branch	2. Division/Group			
		I	CHARLIE Cub Creek Fire			
3. Incident Name		4. Operational Period				
HIGHWAY 200 COMPLEX		Date: 09/17/2017		Time: 0700 – 2000		
5. Operations Personnel						
Planning Ops	Jud Hammer	Division Supervisor	Brian Anderson / Jeff Flick (t)			
Line Ops	Corey Buhl					
Branch I	Paul Roose	Air Operations Director	Bill Sprauer			
6. Resources Assigned This Period						
Strike Team/Task Force/ Resource Designator	Last Shift	Leader	No. Pers.	Trans. Needed	Drop Off PT./Time	Pick Up PT./Time
C-65 HC2IA N ARIZONA REGULARS	09/18	BRENT CORKISH	20	N	ICP 0700	ICP 2000
E-67 ENG3 ENGINE #474	09/19	CORY BALL	8	N	ICP 0700	ICP 2000
E-186 ENG6 MADISON VFD	09/24	GERRIT PEDERSEN	3	N	ICP 0700	ICP 2000
E-54 SKG2 PITMAN RESOURCES	09/22	STEVEN PITMAN	2	N	ICP 0700	ICP 2000
E-239 SKG2 BODLE	09/20	AL BODLE	1	N	ICP 0700	ICP 2000
E-41 WTS2 PAULTON ENTERPRISES	09/18	BILL PAULTON	1	N	ICP 0700	ICP 2000
E-109 WTS2 TAYLOR SERVICES	09/22	CHUCK MANRY	1	N	ICP 0700	ICP 2000
E-118 WTS3 WILDLAND CONTR	09/18	KEVIN SMITH	1	N	ICP 0700	ICP 2000
TFLD (T)	09/19	CODEY STONER	1	N	ICP 0700	ICP 2000
HEQB (T)	09/23	JASON MARTIN	1	N	ICP 0700	ICP 2000
EMTF	09/25	JORDAN SMITH	1	N	ICP 0700	ICP 2000
SOF2	09/26	MARVIN CARPENTER	1	N	ICP 0700	ICP 2000
SOF2	09/26	JIM FREESTONE	1	N	ICP 0700	ICP 2000
7. Control Operations						
<p><b>Task:</b> Continue to fire, control and hold road 2622. Continue to prep dozer line from DP 52 to DIV F/C break. Scout Helwick slop and determine line location.</p> <p><b>Purpose:</b> To bring fire all the way down to road 2622. Keep fire from coming out of Little Beaver Creek and affecting residences at the mouth of drainage.</p> <p><b>End State:</b> Keep fire from impacting residences of Little Beaver Creek. Keep fire from moving further on the Lolo National Forest.</p>						
8. Special Instructions						
<ul style="list-style-type: none"> <li>• Ensure all food and garbage are packed out to avoid bear conflict issues.</li> <li>• Retardant avoidance buffers are 300' from ALL streams <i>except for life and public safety</i> (not property); each Division will keep track where retardant is used especially near live water.</li> <li>• Map all suppression lines and their type with Collector and provide to SITL to facilitate the rehabilitation.</li> <li>• Track merchantable trees removed for fireline construction and deck according to ownership; ensure all are marked in Collector with ownership information.</li> </ul>						
9. Division/Group Communication Summary						
Channel	Function	Frequency - RX	Frequency - TX	Tone	Comments	
10	CMD	171.0250	165.3875	107.2	See Comm Plan	
2	TAC	168.2000	168.2000	107.2		
8	AIR TO GROUND	166.6000	166.6000			
Prepared by RESL		Approved by PSC		Date	Time	
				09/16/2017	2000	

ASSIGNMENT LIST		1. Branch	2. Division/Group			
		I	FOXTROT <i>Cub Creek Fire</i>			
3. Incident Name		4. Operational Period				
HIGHWAY 200 COMPLEX		Date: 09/17/2017	Time: 0700 – 2000			
5. Operations Personnel						
Planning Ops	Jud Hammer	Division Supervisor	Dan Chambers / Eric Held (t)			
Line Ops	Corey Buhl					
Branch I	Paul Roose	Air Operations Director	Bill Sprauer			
6. Resources Assigned This Period						
Strike Team/Task Force/ Resource Designator	Last Shift	Leader	No. Pers.	Trans. Needed	Drop Off PT./Time	Pick Up PT./Time
E-123 ENG6 MN DNR SANDSTONE 754	09/17	DAN NESGODA	3	N	ICP 0700	ICP 2000
E-153 ENG6 ATTACK ONE	09/22	DAVID KNOWLES	3	N	ICP 0700	ICP 2000
E-191 ENG6 KANOUSE	09/26	MATT DAVIS	3	N	ICP 0700	ICP 2000
E-219 ENG6 ARF 661 W/CHASE	09/27	LOGAN DAVIS	5	N	ICP 0700	ICP 2000
E-143 ROCKY MTN AGGREGATE	09/27	GORDON MCKINNEY	1	N	ICP 0700	ICP 2000
E-110 WTS2 METALWORKS	09/21	CHARLES WEBBER	1	N	ICP 0700	ICP 2000
E-131 WTS2 JTH AUTO	09/24	JARED HENDEE	1	N	ICP 0700	ICP 2000
E-196 ERICKSON SKIDGINE WITH LOWBOY	09/22	KYLE HENRY	1	N	ICP 0700	ICP 2000
E-149 MAST ROCKY MTN FIRE SERVICE	09/26	DEVIN MEYER	2	N	ICP 0700	ICP 2000
E-146 JENSON MASTICATOR WITH LOWBOY	09/21	CODY WARD	1	N	ICP 0700	ICP 2000
E-85 GRADER	09/19	CLAYTON PRICE	1	N	ICP 0700	ICP 2000
TFLD	09/25	BENTON MERRIT	1	N	ICP 0700	ICP 2000
TFLD (T)	09/23	MILES BOND	1	N	ICP 0700	ICP 2000
TFLD (T)	09/24	TREVOR KAUFFMAN	1	N	ICP 0700	ICP 2000
HEQB (T)		NATHAN WEIDO	1	N	ICP 0700	ICP 2000
SOF2	09/26	MARVIN CARPENTER	1	N	ICP 0700	ICP 2000
SOF2	09/26	JIM FREESTONE	1	N	ICP 0700	ICP 2000
EMPF	09/20	STAN BANGS	1	N	ICP 0700	ICP 2000
7. Control Operations						
<b>Task:</b> Keep fire north of Haines Gulch and keep fire in check on roads 301, 2262 and Clear Creek road. <b>Purpose:</b> Keep fire from burning out of Big Beaver Creek and affecting residences at the mouth of the drainage. <b>End State:</b> Prevent fire from impacting residence of Big Beaver Creek.						
8. Special Instructions						
<ul style="list-style-type: none"> <li>• Ensure all food and garbage are packed out to avoid bear conflict issues.</li> <li>• Retardant avoidance buffers are 300' from ALL streams <i>except for life and public safety</i> (not property); each Division will keep track where retardant is used especially near live water.</li> <li>• Map all suppression lines and their type with Collector and provide to SITL to facilitate the rehabilitation.</li> <li>• Track merchantable trees removed for fireline construction and deck according to ownership; ensure all are marked in Collector with ownership information.</li> </ul>						
9. Division/Group Communication Summary						
Channel	Function	Frequency - RX	Frequency - TX	Tone	Comments	
10	CMD	171.0250 N	165.3875 N	107.2	See Comm Plan	
3	TAC	168.6000 N	168.6000 N	107.2		
8	AIR TO GROUND	166.6000 N	166.6000 N			
Prepared by RESL		Approved by PSC		Date	Time	
				09/16/2017	2000	



ASSIGNMENT LIST		1. Branch	2. Division/Group			
		I	TANGO Deep-Miller Creek Fire			
3. Incident Name		4. Operational Period				
HIGHWAY 200 COMPLEX		Date: 09/17/2017		Time: 0700 – 2000		
5. Operations Personnel						
Planning Ops	Jud Hammer	Division Supervisor	RJ Hannah / Geoffrey Farinholt (t)			
Line Ops	Corey Buhl					
Branch I	Paul Roose	Air Operations Director	Bill Sprauer			
6. Resources Assigned This Period						
Strike Team/Task Force/ Resource Designator	Last Shift	Leader	No. Pers.	Trans. Needed	Drop Off PT./Time	Pick Up PT./Time
C-43 GANNETT GLACIER	09/27	JOSH LEUTZINGER	19	N	ICP 0700	ICP 2000
GILA MODULE (ON LOAN LOCAL IA)			5	N	ICP 0700	ICP 2000
E-247 ENG6 MARYLAND	09/27	SERGIO CASTILLO	3	N	ICP 0700	ICP 2000
E-187 ENG3 LONE PEAK 1668	09/19	KYLE THATCHER	6	N	ICP 0700	ICP 2000
E-14 DOZ3 JESUS LOVES YOU ENTERPRISES	09/24	EDLEY MOON	1	N	ICP 0700	ICP 2000
E-51 SKG2 HART VENTURES	09/26	DAVE FISH / JEFF SCHELLET	2	N	ICP 0700	ICP 2000
E-115 SKGS OBADIAH WILDFIRE FIGHTERS	09/21	WOODY CHAIN / DAVID STANLEY	2	N	ICP 0700	ICP 2000
E-10 WTS2 JARED LEWIS TRUCKING	10-01	SID CHALLACOMB	1	N	ICP 0700	ICP 2000
EMTF	09/23	PAUL ROBERTSON	1	N	ICP 0700	ICP 2000
SOF2	09/26	MARVIN CARPENTER	1	N	ICP 0700	ICP 2000
SOF2	09/26	JIM FREESTONE	1	N	ICP 0700	ICP 2000
7. Control Operations						
<p><b>Task:</b> Continue assessing structures, establish control lines and holding fire from crossing west of Deep Creek. Patrol Graves Creek.</p> <p><b>Purpose:</b> To keep fire from spreading across Deep Creek and out of the mouth of the drainage. Keep fire in check in Graves Creek.</p> <p><b>End State:</b> Prevent fire from spreading out of Deep Creek and Graves Creek and impacting residence of Blue Slide Road. Prevent fire spreading to west of Deep Creek.</p>						
8. Special Instructions						
<ul style="list-style-type: none"> <li>• Ensure all food and garbage are packed out to avoid bear conflict issues.</li> <li>• Retardant avoidance buffers are 300' from ALL streams <i>except for life and public safety</i> (not property); each Division will keep track where retardant is used especially near live water.</li> <li>• Map all suppression lines and their type with Collector and provide to SITL to facilitate the rehabilitation.</li> <li>• Track merchantable trees removed for fireline construction and deck according to ownership; ensure all are marked in Collector with ownership information.</li> </ul>						
9. Division/Group Communication Summary						
Channel	Function	Frequency - RX	Frequency - TX	Tone	Comments	
10	CMD	171.0250 N	165.3875 N	107.2	See Comm Plan	
6	TAC	168.2500 N	168.2500 N	107.2		
7	AIR TO GROUND	166.9625 N	166.9625 N			
Prepared by RESL		Approved by PSC		Date	Time	
				09/16/2017	2000	

ASSIGNMENT LIST			1. Branch		2. Division/Group		
			I		UNIFORM <i>Deep-Miller Creek Fire</i>		
3. Incident Name			4. Operational Period				
HIGHWAY 200 COMPLEX			Date: 09/17/2017		Time: 0700 – 2000		
5. Operations Personnel							
Planning Ops	Jud Hammer		Division Supervisor		Rich Witzke		
Line Ops	Corey Buhl						
Branch I	Paul Roose		Air Operations Director		Bill Sprauer		
6. Resources Assigned This Period							
Strike Team/Task Force/ Resource Designator	Last Shift	Leader	No. Pers.	Trans. Needed	Drop Off PT./Time	Pick Up PT./Time	
E-68 ENG6 CARLSBAD FIRE	09/20	TED MCGILL	3	N	ICP 0700	ICP 2000	
E-97 WTS2 WILLISON 18	09/21	CURTIS SMITH	1	N	ICP 0700	ICP 2000	
E-97 ENG6 BISHOP ENTERPRISES	09/22	VIRGIL TALKS DIFFERENT	2	N	ICP 0700	ICP 2000	
E-216 R2K ENTERPRISES	09/22	GERALD CALFLOOKING	3	N	ICP 0700	ICP 2000	
SOF2	09/26	MARVIN CARPENTER	1	N	ICP 0700	ICP 2000	
SOF2	09/26	JIM FREESTONE	1	N	ICP 0700	ICP 2000	
EMTF	09/28	PAUL THOMSON	1	N	ICP 0700	ICP 2000	
7. Control Operations							
<p><b>Task:</b> Continue to keep fire north of Graves Creek road.</p> <p><b>Purpose:</b> To keep fire from spreading across the Graves Creek road.</p> <p><b>End State:</b> To maintain fire location until season ending event occurs.</p>							
8. Special Instructions							
<ul style="list-style-type: none"> <li>• Ensure all food and garbage are packed out to avoid bear conflict issues.</li> <li>• Retardant avoidance buffers are 300' from ALL streams <i>except for life and public safety</i> (not property); each Division will keep track where retardant is used especially near live water.</li> <li>• Map all suppression lines and their type with Collector and provide to SITL to facilitate the rehabilitation.</li> <li>• Track merchantable trees removed for fireline construction and deck according to ownership; ensure all are marked in Collector with ownership information.</li> </ul>							
9. Division/Group Communication Summary							
Channel	Function	Frequency - RX	Frequency - TX	Tone	Comments		
10	CMD	171.0250 N	165.3875 N	107.2	See Comm Plan		
6	TAC	168.2500 N	168.2500 N	107.2			
7	AIR TO GROUND	166.9625 N	166.9625 N				
Prepared by RESL		Approved by PSC		Date		Time	
				09/16/2017		2000	

ASSIGNMENT LIST		1. Branch	2. Division/Group			
		I	VICTOR <i>Deep-Miller Creek Fire</i>			
3. Incident Name		4. Operational Period				
HIGHWAY 200 COMPLEX		Date: 09/17/2017	Time: 0700 – 2000			
5. Operations Personnel						
Planning Ops	Jud Hammer	Division Supervisor	Lee Hahnkamp			
Line Ops	Corey Buhl					
Branch I	Paul Roose	Air Operations Director	Bill Sprauer			
6. Resources Assigned This Period						
Strike Team/Task Force/ Resource Designator	Last Shift	Leader	No. Pers.	Trans. Needed	Drop Off PT./Time	Pick Up PT./Time
SOF2	09/26	MARVIN CARPENTER	1	N	ICP 0700	ICP 2000
SOF2	09/26	JIM FREESTONE	1	N	ICP 0700	ICP 2000
EMTF	09/26	PAUL ROBERTSON	1	N	ICP 0700	ICP 2000
7. Control Operations						
<p><b>Task:</b> Scout, determine location of the Miller Fire.</p> <p><b>Purpose:</b> Determine needs associated with the Miller Fire.</p> <p><b>End State:</b> To develop tactics to achieve objectives.</p>						
8. Special Instructions						
<ul style="list-style-type: none"> <li>•Ensure all food and garbage are packed out to avoid bear conflict issues.</li> <li>•Retardant avoidance buffers are 300' from ALL streams <i>except for life and public safety</i> (not property); each Division will keep track where retardant is used especially near live water.</li> <li>•Map all suppression lines and their type with Collector and provide to SITL to facilitate the rehabilitation.</li> <li>•Track merchantable trees removed for fireline construction and deck according to ownership; ensure all are marked in Collector with ownership information.</li> </ul>						
9. Division/Group Communication Summary						
Channel	Function	Frequency - RX	Frequency - TX	Tone	Comments	
10	CMD	171.0250 N	165.3875 N	107.2	See Comm Plan	
NONE	TAC	ASSIGNED				
8	AIR TO GROUND	166.6000 N	166.6000 N			
Prepared by RESL		Approved by PSC		Date	Time	
				09/16/2017	2000	

ASSIGNMENT LIST			1. Branch	2. Division/Group		
			I	READER FIRES		
3. Incident Name			4. Operational Period			
HIGHWAY 200 COMPLEX			Date: 09/17/2017		Time: 0700 – 2000	
5. Operations Personnel						
Planning Ops	Jud Hammer		Division Supervisor	IC5: Brady Thompson		
Line Ops	Corey Buhl					
Branch I	Paul Roose		Air Operations Director	Bill Sprauer		
6. Resources Assigned This Period						
Strike Team/Task Force/ Resource Designator	Last Shift	Leader	No. Pers.	Trans. Needed	Drop Off PT./Time	Pick Up PT./Time
ENG6 THREE RIVERS RD 641				N	ICP 0700	ICP 2000
SOF2	09/26	MARVIN CARPENTER	1	N	ICP 0700	ICP 2000
SOF2	09/26	JIM FREESTONE	1	N	ICP 0700	ICP 2000
7. Control Operations						
<p><b>Task:</b> Mop up 100 feet along fire edge. Identify snags and mitigate as appropriate. Support Cub Creek Structure protection as needed.</p> <p><b>Purpose:</b> Put out Reader Creek fires.</p> <p><b>End State:</b> Leave Reader Creek fires where they don't require any further action.</p>						
8. Special Instructions						
<ul style="list-style-type: none"> <li>• Ensure all food and garbage are packed out to avoid bear conflict issues.</li> <li>• Retardant avoidance buffers are 300' from ALL streams <i>except for life and public safety</i> (not property); each Division will keep track where retardant is used especially near live water.</li> <li>• Map all suppression lines and their type with Collector and provide to SITL to facilitate the rehabilitation.</li> <li>• Track merchantable trees removed for fireline construction and deck according to ownership; ensure all are marked in Collector with ownership information.</li> </ul>						
9. Division/Group Communication Summary						
Channel	Function	Frequency - RX	Frequency - TX	Tone	Comments	
10	CMD	171.0250	165.3875	107.2	See Comm Plan	
4	TAC 4	166.7250	166.7250	107.2		
8	AIR TO GROUND	166.6000	166.6000	8		
Prepared by RESL		Approved by PSC		Date	Time	
				09/16/2017	2000	

ASSIGNMENT LIST			1. Branch	2. Division/Group		Page 1 of 2	
			II		<b>WHISKEY</b> <i>Sheep Gap Fire</i>		
3. Incident Name			4. Operational Period				
<b>HIGHWAY 200 COMPLEX</b>			Date: 09/17/2017		Time: 0700 – 2000		
<b>5. Operations Personnel</b>							
Planning Ops	Jud Hammer		Division Supervisor		Mark Duffey / Paul Amundson (t)		
Line Ops	Corey Buhl						
Branch II	Don Hammack / Fred Thompson (t)		Air Operations Director		Bill Sprauer		
<b>6. Resources Assigned This Period</b>							
Strike Team/Task Force/ Resource Designator	Last Shift	Leader	No. Pers.	Trans. Needed	Drop Off PT./Time	Pick Up PT./Time	
C-47 ROCKY MOUNTAIN FIRE	09/28	KIMBRELL NUTT	20	N	SPIKE 0700	SPIKE 2000	
E-2 DOZ2 MONTURE	09/28	TOM IDE	1	N	SPIKE 0700	SPIKE 2000	
E-7 ENG6 ST. REGIS VFD	09/24	KAT KITTRIDGE	2	N	SPIKE 0700	SPIKE 2000	
E-267 ENG3 RAPID CITY 3-1-1	09/23	LANCE ENRIGHT	4	N	SPIKE 0700	SPIKE 2000	
E-188 ENG4 VEDAUWO	09/17	JUSTIN BURCH	3	N	SPIKE 0700	SPIKE 2000	
E-55 ENG6 R2K ENTERPRISES	09/21	JOHN GALLAGHER-HORN	3	N	SPIKE 0700	SPIKE 2000	
E-126 WTS1 CENTRAL MONTANA HAULING	09/17	WILLIAM FISHER	1	N	SPIKE 0700	SPIKE 2000	
E-124 ENG6 EAST MISSOULA 516	09/17	TANNER FERGUSON	2	N	SPIKE 0700	SPIKE 2000	
E-15 DOZ3 SCHLEGEL ENTERPRISES	09/17	ROYCE SCHLEGEL	2	N	SPIKE 0700	SPIKE 2000	
E-95 WTS2 I KNOW JACK	09/16	DAVID LANLOIS	1	N	SPIKE 0700	SPIKE 2000	
E-92 SKIDG COLE LOGGING	09/18	WAYNE COLE	1	N	SPIKE 0700	SPIKE 2000	
E-83 SKIDG PITMAN RESOURCES	09/22	KEN PITMAN	1	N	SPIKE 0700	SPIKE 2000	
E- 54 ENG6 WILDFIRE RESOURCES	09/18	DAVID SCHREIB	2	N	SPIKE 0700	SPIKE 2000	
E- 94 ENG4 GREAT BASIN FIRE	09/20	DAVID GRASS	4	N	SPIKE 0700	SPIKE 2000	
E- 167 ENG6 INLAND	09/20	DONAVON MAUPIN	2	N	SPIKE 0700	SPIKE 2000	
E-116 SKG3 HALLWOOD PROCESSING	09/25	JEREMY LYBBERT	1	N	SPIKE 0700	SPIKE 2000	
E-1 WTS2 TOM HAYNES	09/13	ANDREW WHEELER	1	N	SPIKE 0700	SPIKE 2000	
E-148 MAST ENHANCED FOREST MNGT	09/18	DYRK KRUEGER	1	N	SPIKE 0700	SPIKE 200	
<b>7. Control Operations</b>							
<b>Task:</b> Hold fire south of Poacher Creek and East of Eddy Creek. Burn off line when necessary. Construct line along the slope west from Eddy Cr.							
<b>Purpose:</b> Protect structures northwest of Eddy Creek.							
<b>End State:</b> To safely protect the structures northwest of Eddy Creek.							
<b>8. Special Instructions</b>							
Ensure all food and garbage are packed out to avoid bear conflict issues.							
<ul style="list-style-type: none"> <li>Retardant avoidance buffers are 300' from ALL streams <i>except for life and public safety</i> (not property); each Division will keep track where retardant is used especially near live water.</li> <li>Map all suppression lines and their type with Collector and provide to SITL to facilitate the rehabilitation.</li> <li>Track merchantable trees removed for fireline construction and deck according to ownership; ensure all are marked in Collector with ownership information.</li> </ul>							
<b>9. Division/Group Communication Summary</b>							
Channel	Function	Frequency - RX	Frequency - TX	Tone	Comments		
11	CMD	171.0875 N	164.8625 N	107.2	See Comm Plan		
2	TAC	168.2000 N	168.2000 N	107.2			
9	AIR TO GROUDN	169.4875 N	169.4875 N				
Prepared by RESL		Approved by PSC		Date	Time		
				09/16/2017	2000		

ASSIGNMENT LIST		1. Branch	II		2. Division/Group	Page 2 of 2	
3. Incident Name		4. Operational Period		WHISKEY Sheep Gap Fire			
HIGHWAY 200 COMPLEX		Date: 09/17/2017		Time: 0700 – 2000			
5. Operations Personnel							
Planning Ops	Jud Hammer	Division Supervisor		Mark Duffey / Paul Amundson (t)			
Line Ops	Corey Buhl						
Branch II	Don Hammack / Fred Thompson (t)	Air Operations Director		Bill Sprauer			
6. Resources Assigned This Period							
Strike Team/Task Force/ Resource Designator	Last Shift	Leader	No. Pers.	Trans. Needed	Drop Off PT./Time	Pick Up PT./Time	
TFLD	09/28	JACOB BIRDSSELL	1	N	SPIKE 0700	SPIKE 2000	
AEMF	09/20	GREG HAAS	1	N	SPIKE 0700	SPIKE 2000	
SOF2	09/24	SCOTT BELKNAP	1	N	SPIKE 0700	SPIKE 2000	
7. Control Operations							
<p><b>Task:</b> Hold fire south of Poacher Creek and East of Eddy Creek. Burn off line when necessary. Construct line along the slope west from Eddy Cr.</p> <p><b>Purpose:</b> Protect structures northwest of Eddy Creek.</p> <p><b>End State:</b> To safely protect the structures northwest of Eddy Creek.</p>							
8. Special Instructions							
<p>Ensure all food and garbage are packed out to avoid bear conflict issues.</p> <ul style="list-style-type: none"> <li>Retardant avoidance buffers are 300' from ALL streams <i>except for life and public safety</i> (not property); each Division will keep track where retardant is used especially near live water.</li> <li>Map all suppression lines and their type with Collector and provide to SITL to facilitate the rehabilitation.</li> <li>Track merchantable trees removed for fireline construction and deck according to ownership; ensure all are marked in Collector with ownership information.</li> </ul>							
9. Division/Group Communication Summary							
Channel	Function	Frequency - RX	Frequency - TX	Tone	Comments		
11	CMD	171.0875 N	164.8625 N	107.2	See Comm Plan		
2	TAC	168.2000 N	168.2000 N	107.2			
9	AIR TO GROUDN	169.4875 N	169.4875 N				
Prepared by RESL		Approved by PSC		Date	Time		
				09/16/2017	2000		

ASSIGNMENT LIST		1. Branch	II		2. Division/Group	X-RAY Sheep Gap Fire		
3. Incident Name		4. Operational Period		Date: 09/17/2017				Time: 0700 – 2000
HIGHWAY 200 COMPLEX								
5. Operations Personnel								
Planning Ops	Jud Hammer		Division Supervisor		Danny Lemer			
Line Ops	Corey Buhl							
Branch II	Don Hammack / Fred Thompson (t)		Air Operations Director		Bill Sprauer			
6. Resources Assigned This Period								
Strike Team/Task Force/ Resource Designator	Last Shift	Leader	No. Pers.	Trans. Needed	Drop Off PT./Time	Pick Up PT./Time		
C-45 HELENA HOTSHOTS	09/29	TIGHE STOYANOFF	22	N	SPIKE 0700	SPIKE 2000		
C-49 VEGAS	09/22	JASON LANIER	21	N	SPIKE 0700	SPIKE 200		
TFLD	09/26	DAN STEVENS	1	N	SPIKE 0700	SPIKE 2000		
SOF2	09/26	STEVE WYATT	1	N	SPIKE 0700	SPIKE 2000		
EMTF	09/28	TONY VARGOS	1	N	SPIKE 0700	SPIKE 2000		
7. Control Operations								
<p><b>Task:</b> Locate line opportunities to tie into the Z / X break.</p> <p><b>Purpose:</b> Establish control lines.</p> <p><b>End State:</b> To deliver all needed resources to requesting divisions.</p>								
8. Special Instructions								
<ul style="list-style-type: none"> <li>• Ensure all food and garbage are packed out to avoid bear conflict issues.</li> <li>• Retardant avoidance buffers are 300' from ALL streams <i>except for life and public safety</i> (not property); each Division will keep track where retardant is used especially near live water.</li> <li>• Map all suppression lines and their type with Collector and provide to SITL to facilitate the rehabilitation.</li> <li>• Track merchantable trees removed for fireline construction and deck according to ownership; ensure all are marked in Collector with ownership information.</li> </ul>								
9. Division/Group Communication Summary								
Channel	Function	Frequency - RX	Frequency - TX	Tone	Comments			
11	CMD 11	171.0875	164.8625	107.2	See Comm Plan			
4	TAC 4	166.7250	166.7250	107.2				
9	AIR TO GROUND	169.4875	169.4875					
Prepared by RESL		Approved by PSC		Date	09/16/2017		Time	
							2000	

ASSIGNMENT LIST		1. Branch	II		2. Division/Group	ZULU Sheep Gap Fire	
3. Incident Name		4. Operational Period					
HIGHWAY 200 COMPLEX		Date: 09/17/2017		Time: 0700 – 2000			
5. Operations Personnel							
Planning OPs	Jud Hammer		Division Supervisor		Dan Helterline		
Line Ops	Corey Buhl						
Branch II	Don Hammack / Fred Thompson (t)		Air Operations Director		Bill Sprauer		
6. Resources Assigned This Period							
Strike Team/Task Force/ Resource Designator	Last Shift	Leader	No. Pers.	Trans. Needed	Drop Off PT./Time	Pick Up PT./Time	
C-46 GRAYBACK	09/29	ADAM BABBITT	20	N	SPIKE 0700	SPIKE 2000	
C-48 FORT APATCHE	09/22	CARLTON GOSEYUN	20	N	SPIKE 0700	SPIKE 2000	
E-53 SKG2 ALLDERDICE W/LOWB	09/18	DAVID ALLDERDICE / BILL KREIS	2	N	SPIKE 0700	SPIKE 2000	
E-145 DOZ2 HARVESTER LOGGING			1	N	SPIKE 0700	SPIKE 2000	
E-34 PARDEE DOZ2 WITH LBOY		RUSS YAEGER / MAK SKINNER	2	N	SPIKE 0700	SPIKE 2000	
TAYLOR WTT2		BEN FREEMAN	1	N	SPIKE 0700	SPIKE 2000	
E-15 DOZ2 SCHLEGEL ENTERPRISES	09/17	ROYCE SCHLEGL	1	N	SPIKE 0700	SPIKE 2000	
E- 12 HETF MARK SWANSON LOGGING	09/26	HUNTER CLARK CRWB	1	N	SPIKE 0700	SPIKE 2000	
FELLER BUNCHER	09/26	RICH DAGLESISH	1	N	SPIKE 0700	SPIKE 2000	
SKIDDER	09/26	JERRY WILSON	1	N	SPIKE 0700	SPIKE 2000	
SKIDGEN	09/26	STEVE LUSTIG	1	N	SPIKE 0700	SPIKE 2000	
DOZER	09/26	VERN WALKER	1	N	SPIKE 0700	SPIKE 2000	
LOWBOY	09/26	JORDAN NELSON	1	N	SPIKE 0700	SPIKE 2000	
LOWBOY	09/26	LEE EDDINS	1	N	SPIKE 0700	SPIKE 2000	
LOWBOY	09/26	JUSTIN EDDINS	1	N	SPIKE 0700	SPIKE 2000	
LOWBOY	09/26	LUKE ANDERSON	1	N	SPIKE 0700	SPIKE 2000	
SOF2	09/26	STEVE WYATT	1	N	SPIKE 0700	SPIKE 2000	
AEMF	09/20	GREG HAAS	1	N	SPIKE 0700	SPIKE 2000	
7. Control Operations							
<b>Task:</b> Go direct with equipment or hand crews where applicable. <b>Purpose:</b> Contain fire spread and reduce chances of fire escape. <b>End State:</b> Prevent fire from impacting residence in lower Swamp Creek. Contain fire where possible from additional growth.							
8. Special Instructions							
<ul style="list-style-type: none"> <li>• Ensure all food and garbage are packed out to avoid bear conflict issues.</li> <li>• Retardant avoidance buffers are 300' from ALL streams <i>except for life and public safety</i> (not property); each Division will keep track where retardant.</li> <li>• Map all suppression lines and their type with Collector and provide to SITL to facilitate the rehabilitation.</li> <li>• Track merchantable trees removed for fireline construction and deck according to ownership; mark ownership in Collector.</li> </ul>							
9. Division/Group Communication Summary							
Channel	Function	Frequency - RX	Frequency - TX	Tone	Comments		
12	CMD	167.1000 N	169.7500 N	107.2	See Comm Plan		
1	TAC	168.0500 N	168.0500 N	107.2			
9	AIR TO GROUND	169.4875 N	169.4875 N				
Prepared by RESL		Approved by PSC		Date	Time		
				09/16/2017	2000		



ASSIGNMENT LIST			1. Branch	2. Division/Group		
			II		<b>STRUCTURE</b> <i>Sheep Gap Fire</i>	
3. Incident Name			4. Operational Period			
<b>HIGHWAY 200 COMPLEX</b>			Date: 09/17/2017		Time: 0700 – 2000	
5. Operations Personnel						
Planning Ops	Jud Hammer		Division Supervisor	Hunter Bell / Craig Williams		
Line Ops	Corey Buhl					
Branch II	Don Hammack / Fred Thompson (t)		Air Operations Director	Bill Sprauer		
6. Resources Assigned This Period						
Strike Team/Task Force/ Resource Designator	Last Shift	Leader	No. Pers.	Trans. Needed	Drop Off PT./Time	Pick Up PT./Time
E-21 ENG3 ROCKY MOUNTAIN FIRE CO	09/19	GLENN NUTT	3	N	ICP 0700	ICP 2000
E-128 H2O EXPRESS	09/18	MIKE LEISHMAN	1	N	SPIKE 0700	SPIKE 2000
E-188 VEDAUWOO 1	09/17	JUSTIN BURCH	3	N	SPIKE 0700	SPIKE 2000
E-116 ROKCY MOUNTAIN FIRE	09/19	SHANE WRIGHT	3	N	SPIKE 0700	SPIKE 2000
E-193 WTS2 ALPINE TRANSPORT	09/24	GEORGE MINGA	1	N	SPIKE 0700	SPIKE 2000
E-217 ENG6	09/28	WYATT LAWRENCE	3	N	SPIKE 0700	SPIKE 2000
E-218 ENG3	09/27	MATTHEW HISE	4	N	SPIKE 0700	SPIKE 2000
E-220 SOUTH DAKOTA 261	09/27	JAMES BACHELOR	3	N	SPIKE 0700	SPIKE 2000
TFLD	09/15	TROY BOSCHEE	1	N	SPIKE 0700	SPIKE 2000
SOF2	09/26	STEVE WYATT	1	N	SPIKE 0700	SPIKE 2000
7. Control Operations						
<p><b>Task:</b> Identify structures and values at risk and develop a plan for protection.</p> <p><b>Purpose:</b> To locate opportunities for developing trigger points and implement tactics.</p> <p><b>End State:</b> To keep fire out of structures and values at risk along the toe of the slope where feasible.</p>						
8. Special Instructions						
<ul style="list-style-type: none"> <li>• Ensure all food and garbage are packed out to avoid bear conflict issues.</li> <li>• Retardant avoidance buffers are 300' from ALL streams <i>except for life and public safety</i> (not property); each Division will keep track where retardant is used especially near live water.</li> <li>• Map all suppression lines and their type with Collector and provide to SITL to facilitate the rehabilitation.</li> <li>• Track merchantable trees removed for fireline construction and deck according to ownership; ensure all are marked in Collector with ownership information.</li> </ul>						
9. Division/Group Communication Summary						
Channel	Function	Frequency - RX	Frequency - TX	Tone	Comments	
11	CMD	171.0875 N	164.8625	107.2	See Comm Plan	
5	TAC	166.7750 N	166.7750 N	107.2		
9	AIR TO GROUND	169.4875 N	169.4875 N			
Prepared by RESL		Approved by PSC		Date	Time	
				09/16/2017	2000	

ASSIGNMENT LIST		1. Branch	II		2. Division/Group	STAGING BIG BEAVER		
3. Incident Name		4. Operational Period		Date: 09/17/2017				Time: 0700 – 2000
HIGHWAY 200 COMPLEX								
5. Operations Personnel								
Planning Ops	Jud Hammer		Division Supervisor		Mike West			
Line Ops	Corey Buhl							
Branch II	Don Hammack / Fred Thompson (t)		Air Operations Director		Bill Sprauer			
6. Resources Assigned This Period								
Strike Team/Task Force/ Resource Designator	Last Shift	Leader	No. Pers.	Trans. Needed	Drop Off PT./Time	Pick Up PT./Time		
E-8 EXCA TRAVER'S EXCAVATING	09/18	JOSH MEUCHEL	1	N	SPIKE 0700	SPIKE 2000		
E-86 EXCA ROCKY MTN FIRE	09/20	AARON STAPLEY	2	N	SPIKE 0700	SPIKE 2000		
E-151 FELB TOUGH GO LOGGING	09/29	GRAHAM MATTHEWS	2	N	SPIKE 0700	SPIKE 2000		
E-164 SKID HATT & SON LOGGING	09/21	JAMES STOKER	2	N	SPIKE 0700	SPIKE 2000		
7. Control Operations								
<p><b>Task:</b> Manage heavy equipment needs.  <b>Purpose:</b> Complete all tasks.  <b>End State:</b> Deliver resources to requesting Divisions.</p>								
8. Special Instructions								
<ul style="list-style-type: none"> <li>• Ensure all food and garbage are packed out to avoid bear conflict issues.</li> <li>• Retardant avoidance buffers are 300' from ALL streams <i>except for life and public safety</i> (not property); each Division will keep track where retardant is used especially near live water.</li> <li>• Map all suppression lines and their type with Collector and provide to SITL to facilitate the rehabilitation.</li> <li>• Track merchantable trees removed for fireline construction and deck according to ownership; ensure all are marked in Collector with ownership information.</li> </ul>								
9. Division/Group Communication Summary								
Channel	Function	Frequency - RX	Frequency - TX	Tone	Comments			
11	CMD	171.0875	164.8625	107.2	See Comm Plan			
5	TAC	166.7750	166.7750	107.2				
9	AIR TO GROUND	169.4875	169.4875					
Prepared by RESL		Approved by PSC		Date	Time			
				09/16/2017	2000			

**AIR OPERATIONS SUMMARY**

Prepared By: Bill Sprauer

Prepared Date: 09/16/2017

Prepared Time: 1800

<b>1. INCIDENT NAME:</b> Highway 200 Complex	<b>2. OPS PERIOD DATE:</b> 09/17/17	<b>START TIME:</b> 0800	<b>END TIME:</b> 2000	<b>SUNRISE:</b> 0720	<b>SUNSET:</b> 1947
---	--	----------------------------	--------------------------	-------------------------	------------------------

<p>-Wires located along river and at multiple dip sites. Complete a <b>high level recon</b> prior to entering the dip site.</p> <p>-Tactical Aviation Operations shall be conducted only until official sunset. Ferry to and from base can occur between sunset and pumpkin.</p> <p>Helibase email: <a href="mailto:thompsonfallshb@gmail.com">thompsonfallshb@gmail.com</a></p> <p><b>Helibase located at Thompson Falls Airport: Unicom 122.9</b> <b>Lat: 47 34.40 N Long: 115 16.84 W Elevation: 2468 ft</b></p> <p><b>AIRPORT IS NOT CLOSED</b></p>	<p><b>4. Medivac Helicopter Options:</b></p> <p>Incident AC: 354E Ambulatory 73H Litter</p> <p>Non-Incident: Two Bear Air: Hoist Capable. NVG. Order thru Missoula Dispatch</p> <p>Lifeflight: See Med Plan</p>	<p><b>5.</b> <b>A-3 Sheep Creek TFR 7/3242</b> <b>Altitude: 10000ft</b> <b>Polygon / Freq: 120.250</b></p> <p><b>Deep/Cub/Miller-TFR- 7/5099</b> <b>Altitude: 11000ft</b> <b>Polygon /Freq:126.4500</b></p> <p><b><u>TFR Adjacent to Deep/Cub/Miller</u></b> <b>Moose Peak Fire</b> <b>TFR 7/5100 11,000ft</b> <b>Polygon/Freq: 128.250</b></p>
---	---	---

	NAME	PHONE #	7. FREQUENCIES	AM	FM	8. Adjacent incident info:
AOBD	Bill Sprauer	406-859-3117	BRANCH I Divs C/F/T/U/D FW A/A RW A/A	126.4500 128.2000		Branch I Cub/Reader/Deep Creek Miller Fires
ASGS	Henry Gilliland	406-740-0768	BRANCH II Divs W/X/Z FW A/A RW A/A	120.2500 135.1500		Branch II Sheep Gap Fire
HEB1(T)	Michael Lewton	520-604-6287	BRANCH I(DivsT/U/V) Deep Cr/Miller Fires	AG 7 166.9625		
ATGS	Hon Schlapfer	970-903-3592	BRANCH I (Divs C/F) Cub/ Reader Fires BRANCHII(DivW/X/Z) Sheep Gap Fire	AG 8 166.6000 AG 9 169.4875		
FAO	Bo Dobberstein	406-370-3374	TOLC (Helibase)		167.9625	
Thompson Falls Helibase		406-827-9011	Deck		163.100	
Missoula Dispatch		406-829-7060	IA Lolo West A/G		166.7500	
			Air Guard	168.6250	168.6250 110.9	
			Command 10		171.0250RX 165.3875TX Tn 107.2	Contact Frequency Aircraft to Helibase

9. Thompson Falls H.B. Aircraft

9.5 Additional Aircraft information

FAA N#	TY	MAKE/ MODEL	BASE	START	REMARKS	N #	TY	MAKE/ MODEL	BASE	START	REMARKS
407TD	3	Bell 407	THM	0900	LNF IA Not assigned	214B	1	Bell 214	THM	0900	
684H	3	Bell 407	THM	0900		116	1	Kmax	THM	1200 ETA	Reposition from Meyer Fire
354E	3	AS 350B3	THM	0900		401AJ	1	CH-47	THM	0900	
209PJ	2	UH-1H	THM	0900	Restricted	303AJ	1	CH-47	THM	0900	Released at 1200 Off Contract
96EC	2	UH-1H	THM	0900	Restricted						
2773H	2	Bell 205	THM	0900	Standard Cat						
210 MA	2	Bell 210	THM	0900	Standard Cat	115AV		King Air	MSO	0900	Air Attack

<b>INCIDENT RADIO COMMUNICATIONS PLAN I-205</b>	1. INCIDENT NAME	2. DATE/TIME PREPARED	3. OPERATIONAL PERIOD DATE/TIME
	HWY 200 COMPLEX	9/16/2017	9/17/2017

**4. BASIC RADIO CHANNEL UTILIZATION**

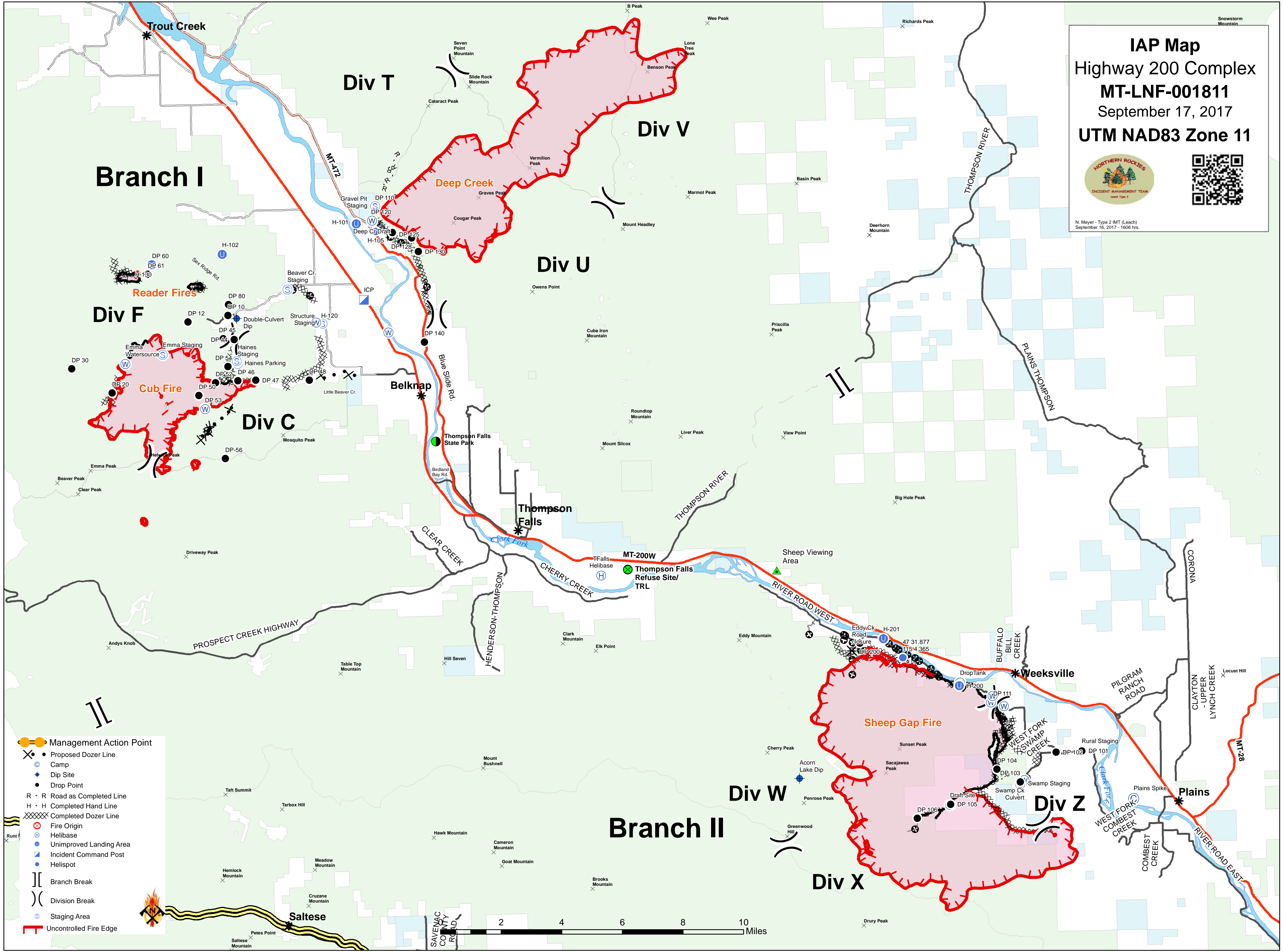
Ch #	Channel Name	Assignment	RX Frequency Narrowband (N) Wideband (W)		RX Tone/NAC	TX Frequency Narrowband (N) Wideband (W)		TX Tone/NAC	Mode Digital (D) Analog (A) Mixed (M)	Remarks
1	TAC 1	DIV Z/V	168.0500	N	107.2	168.0500		107.2	A	DIV Z/V
2	TAC 2	DIV W/C	168.2000	N	107.2	168.2000		107.2	A	DIV W/C
3	TAC 3	N STRUCTURE, DIV F	168.6000	N	107.2	168.6000		107.2	A	NORTH STRUCTURE, DIV F
4	TAC 4	READER, DIV X	166.7250	N	107.2	166.7250		107.2	A	READER, DIV X
5	TAC 5	S STRUCTURE, EQUIP, DIV T	166.7750	N	107.2	166.7750		107.2	A	SOUTH STRUCTURE, HEAVY EQUIPMENT, DIV T
6	TAC 6	DIV U	168.2500	N	107.2	168.2500		107.2	A	DIV U
7	AIR TO GROUND	A/G	166.9625	N		166.9625			A	DEEP CREEK, BRANCH I DIVS T/U/V
8	AIR TO GROUND	A/G NORTH	166.6000	N		166.6000			A	CUB BRANCH, I DIVS C/F
9	AIR TO GROUND	A/G SOUTH	169.4875	N		169.4875			A	SHEEP GAP, BRANCH II DIVS W/X/Z
10	CMD 10	CMD 10	171.0250	N	107.2	165.3875		107.2	A	COUGAR PEAK
11	CMD 11	CMD 11	171.0875	N	107.2	164.8625		107.2	A	BIG HOLE PEAK
12	CMD 12	CMD 12	167.1000	N	107.2	169.7500		107.2	A	PENROSE PEAK
13	AIR TO GROUND	A/G IGNITION	169.2000	N		169.2000			A	NOT IN USE
14	TACTICAL	RED	154.0700	N		154.0700		156.7	A	LOCAL IA
15	TACTICAL	TAN	155.3400	N		155.3400		156.7	A	LOCAL LIFEFLIGHT
16	AIRGUARD	ALL	168.6250	N		168.6250		110.9	A	AIRGUARD

5. I-205 Prepared By	KENNETH HAYNES, COML	<b>SAFETY MESSAGE: IT IS YOUR RESPONSIBILITY TO INSURE YOU HAVE GOOD COMMO AT ALL TIMES. IF YOU DON'T, POST LOOKOUTS WHO CAN RELAY MESSAGES OUT OF POOR COVERAGE AREAS. KNOW HOW TO MAKE YOUR EQUIPMENT WORK!</b>
----------------------	----------------------	---

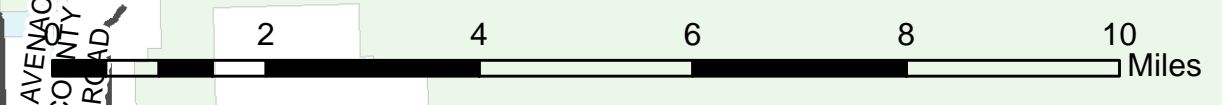
**IAP Map**  
**Highway 200 Complex**  
**MT-LNF-001811**  
 September 17, 2017  
 UTM NAD83 Zone 11



N. Meyer - Type 2 IMT (Leach)  
 September 16, 2017 - 1606 hrs.

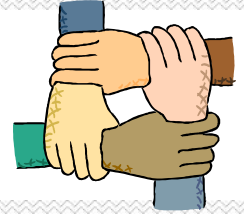


- Management Action Point
- Proposed Dozer Line
- Camp
- Dip Site
- Drop Point
- R - R Road as Completed Line
- H - H Completed Hand Line
- Completed Dozer Line
- Fire Origin
- Helibase
- Unimproved Landing Area
- Incident Command Post
- Helispot
- Branch Break
- Division Break
- Staging Area
- Uncontrolled Fire Edge





## Human Resource Message



### Thought for the Day

## FIRE

- Fatigue..... Be aware of fatigue having a negative impact on your conduct and speech
- Integrity..... Integrity and Honesty are vital on a fire. If you mess up, fess up, whatever you did can most likely be fixed if you report it as soon as you are aware of it.
- Respect..... Treat others as you would like to be treated
- Example..... Set an example. Realize you influence others around you, therefore, always conduct yourself in a professional and competent manner, but still have fun!

**Lauren Dorosz HRSP**  
**Juan Silva HRSP (t)**

# Highway 200 Complex Phone List



Northern Rockies Incident Management Team

September 15, 2017

Medical	406-827-9229
Logistics	406-827-9234
Demobilization	406-827-9226
Finance	406-827-9225
Safety/Air Ops/Liaison	406-827-9237
Information	406-827-9235
IC	406-827-9227
Ordering	406-827-9233
Communications	406-827-9232



## MEDICAL PLAN (ICS 206 WF)

<b>1. Incident/ project name and address:</b>				<b>2. Operational Period: Date/Time</b>			
Highway 200 Complex Mile post 41 Hwy 200 Thompson Falls, MT 59873				9/17/17 0600-2200			
<b>3. Ambulance Services</b>							
Name	Complete address	Phone & EMS Frequency	ALS ✓				
Thompson Falls Comm. Ambulance	P.O. Box 1055 Thompson Falls, MT 59873 (North Ops)	911 155.2800					
Noxon Community Ambulance	P.O. Box 170 Noxon, MT 59853 (North Ops)	911 155.2800					
Plains Community Ambulance	P.O. Box 268 Plains, MT 59859 (South Ops)	911 155.2800					
Superior Ambulance	1208 6 <sup>th</sup> Ave #2 Superior, MT (South Ops)	911 or 406-829-7070 155.2800					
<b>4. Air Ambulance Services</b>							
Name	Location/remarks	Phone & EMS Frequency	ALS ✓	hoist ✓	night ✓		
Life Flight Network	Missoula, MT/Sand Point, ID	911 829-7070	X		X		
Alert Air Ambulance	Kalispell, MT	911 752-5111	X		X		
Two Bear Air	Whitefish, MT	911 297-2121		X	X		
<b>5. Hospitals</b>							
Name and Address	Phone	Level of care	Heli Pad ✓	If Helipad, Lat./Long. (DD mm.mmm') Datum WGS84	Travel time to hosp: min's Air Ground		
Clark Fork Valley Hospital 10 Kruger Rd. Plains, MT 59859	406-826-4800 ER 406-826-4875	Critical Access	X		20 min	35 min	
St. Patrick Hospital 500 Broadway Missoula, MT	406-543-7271	Trauma II	X	N 46 52.524 W113 59.969	35 min	120 min	
Kalispell Regional Medical Center 310 Sunnyview Ln. Kalispell, MT 59901	406-752-5111	Trauma II	X	N 48 12.800 W 114 19.440	20 min	125 min	
Community Medical Center 2827 Ft. Missoula Rd Missoula, MT	406-728-4100	Trauma III	X	N 46 50.909 W 114 02.865	35 min	120 min	
<b>6. Area Location Capability</b>							
Branch, Div, Group	Aid Station Name; Responders	Equipment available	Emergency frequency	Ambulance ETA to site: min's Air Ground		Nearby Helispot &/or DP	Helispot &/or DP lat/long (DD mm.mmm') Datum WGS 84
ICP	MEDL Teri Miller	BLS	CMD-10	20 min	35 min		
South Ops	Plains Spike; IMSA Bob Carlson	BLS	CMD-11	35 min	5 min		
South Ops	Div W; AEMT Greg Haas Div Z; AEMT Greg Haas Div X Tony Vargas	BLS	CMD-11	35 min	30 min		
South Ops	Div T; EMTF Paul Robertson	BLS	CMD-10	20 min	60 min		
North Ops	Div F: EMPF Stan Bangs, Div C: EMTF Jordan Smith Div U: EMTF Paul Thomson	ALS	CMD-10	20 min	60 min		
Cabinet Ranger Station	Alert transfer point					Helipad	N 47 51.991 W 115 36.723
<b>7. Notes, special procedures:</b> Use Medical Incident Report for medical response and Medical Incident Pre-Planning worksheet for briefing. Medical Emergencies should be reported in accordance with Lolo/Kootenai Forest procedures.							
<b>8. Prepared by (Medical Unit Leader)</b>			<b>9. Date/Time</b>		<b>10. Reviewed by (Safety Officer)</b>		<b>11. Date/Time</b>
Teri Miller			9/16/17 1500				

## Medical Incident Report

Use items 1 through 9 to communicate situation to communications/dispatch.

### 1. CONTACT COMMUNICATIONS/DISPATCH:

Example: "Northeast Dispatch, Division Alpha – standby for Priority Medical Incident Report." (If life threatening, request designated frequency be cleared for emergency traffic only.)

### 2. INCIDENT STATUS: Provide incident summary and command structure:

Nature of Injury/Illness:		Describe the injury (Example: broken leg with bleeding)
Incident Name:		Geographic Name + Medical (Example: Trout Meadow Medical)
Incident Commander:		Name of Incident Commander
Patient Care:		Name of care provider (Example: EMT Denney)

### 3. INITIAL PATIENT ASSESSMENT: Complete this section for each patient. This is only a brief, initial assessment. Provide additional patient information after completing this 9-Line Report.

Number of patients: \_\_\_\_\_ ( \_\_\_\_\_ male, \_\_\_\_\_ female)    Age(s): \_\_\_\_\_    Weight(s): \_\_\_\_\_

Conscious?             YES     NO = **MEDEVAC!**

Breathing?             YES     NO = **MEDEVAC!**

Mechanism (cause) of injury: \_\_\_\_\_

### 4. SEVERITY OF EMERGENCY

### TRANSPORT PRIORITY

<input type="checkbox"/> <b>URGENT - RED:</b> 1. Airway obstruction. 2. Difficulty breathing. 3. Major blood loss. 4. Cardiac chest pain. 5. Crush injury to the chest. 6. Penetrated object. 7. Open fracture. 8. 2° or 3° burn more than 4 palm sizes. 9. Anaphylactic shock from bee sting. 10. Head or spine injury.	Ambulance or MEDEVAC helicopter. Evacuation need is <b>IMMEDIATE</b> .
<input type="checkbox"/> <b>PRIORITY - YELLOW:</b> 1. Closed fracture. 2. Significant trauma; Lacerations and bleeding not controlled by pressure. 3. Not able to walk. 4. 2° or 3° burn, no more than 1 or 2 palm sizes.	Ambulance or consider air transport if at remote location. Evacuation may be <b>DELAYED</b> .
<input type="checkbox"/> <b>ROUTINE - GREEN:</b> 1. Small area abrasions or lacerations. 2. Bleeding controlled by pressure. 3. Minor sprain. 4. General sickness.	Non-Emergency. Evacuation considered <i>Routine of Convenience</i> .

### 5. TRANSPORT PLAN:

Air Transport: (Agency Aircraft preferred)     Helispot             Short-haul/Hoist     Life Flight             Other

Ground Transport:             Self-Extract             Carry-Out             Ambulance             Other

### 6. ADDITIONAL RESOURCE/EQUIPMENT NEEDS:

Paramedic/EMT     Crew(s)     Trauma Bag     Medications  
 IV/Fluid(s)     SKED/Backboard/C-Collar     Burn Sheet(s)     Oxygen     Cardiac Monitor/AED     Other

### 7. COMMUNICATIONS:

Function	Channel Name / #	Receive (Rx)	Tone/NAC*	Transmit (Tx)	Tone/NAC*
Command					
Air-Ground					
Tactical					

### 8. EVACUATION LOCATION:

\*NAC = for digital radio system

Lat/Long (Datum WGS84):	
Patient's ETA to Evacuation Location:	
Helispot/Extraction Size and Hazards:	

### 9. CONTINGENCY: (If primary options fail, what actions can be implemented in conjunction with primary evacuation method?)



