

Sprague

MT-GNP-000526

PPK9EX(1502)

757402

PF.FSK9EX017.00.1

Adair Peak

MT-GNP-000558

PPK9J0

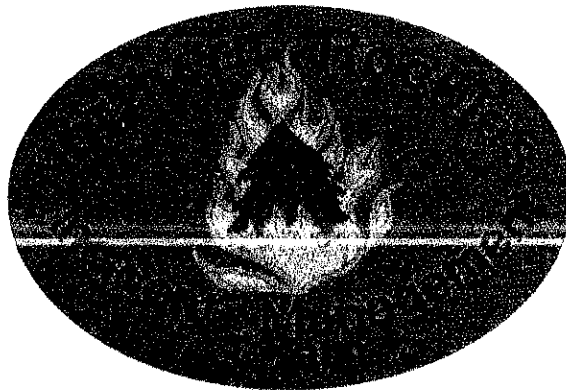
PF.FSK9J0017.00.1

Elder Creek

MT-GNP-000737

PPLBK6(1502)

PF.FSLBK6017.00.1



Incident Action Plan

Wednesday September 13, 2017

Day Operations: 0700-2100

Night Operations: 1800-1000

INCIDENT OBJECTIVES	1. Incident Name Sprague/Adair Peak/Elder Creek	2. Date 09/11/2017	3. Time 1800
----------------------------	---	------------------------------	------------------------

4. Operational Period: 9/13/2017 **Operational Period: Day:** 0700 – 2100 **Night:** 1800-1000

Incident Objectives:

- Reduce the risk to firefighters by utilizing a point protection strategy. This strategy will reduce risk and exposure to maintain a high likelihood for success while protecting values at risk as well as wilderness values. Reduce the risk to the public by coordinating establishment of area closures as well as developing a well-planned and coordinated evacuation response.
- Keep the fire west of the Continental Divide to prevent large scale fire growth to the east outside the park boundary and develop and update a long term plan for the management of the Sprague Fire.
- Provide for protection of values at risk which include; Sperry Chalet Complex, Lake McDonald development area, Crystal Ford Bridge, North Lake McDonald structures, the Going to The Sun Corridor, Sprague Creek C.G. and Avalanche Creek Area, Harrison Lake Cabin near or within the Sprague fire; Logging Lake Patrol Cabins, Logging Lake Ranger Station and Campgrounds near the Adair Peak fire; Kishenehn Cabins, Kintla Ranger Station and Campground, Upper Kintla Patrol Cabin and private structures west of the Park boundary near Elder Creek.

Operational Period Command Emphasis:

Because firefighter and public safety is our first priority, all tactical operations will be evaluated to reduce and/or Mitigate risk prior to engagement. All tactical operations need to be commensurate with values at risk.

6. Weather Forecast for Period See attached Weather Forecast

7. General Safety Message: See attached Safety Message

8. Attachments (mark if attached)

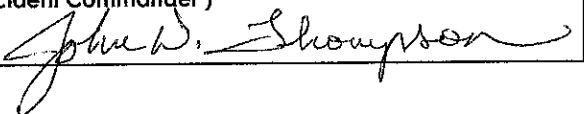
- | | | |
|---|---|---|
| <input checked="" type="checkbox"/> Organization List - ICS 203 | <input checked="" type="checkbox"/> Weather Forecast | <input checked="" type="checkbox"/> Safety Message |
| <input checked="" type="checkbox"/> Div. Assignment Lists - ICS 204 | <input checked="" type="checkbox"/> Fire Behavior Forecast | <input checked="" type="checkbox"/> Incident within an Incident |
| <input checked="" type="checkbox"/> Communications Plan - ICS 205 | <input checked="" type="checkbox"/> Incident Map | <input checked="" type="checkbox"/> Unit Log - ICS 214 |
| <input checked="" type="checkbox"/> Medical Plan - ICS 206 | <input checked="" type="checkbox"/> Air Operations- ICS 220 | |

9. Prepared by (Planning Section Chief)

Barb Thompson

9. Approved by (Incident Commander)

John Thompson



ORGANIZATIONAL STRUCTURE CHART		9. Operations Section	
1. Incident Name SPRAGUE/ADAIR PEAK/ELDER CREEK		Branch Chiefs	
2. Date: September 13, 2017		Operations	
4. Operational Period: Day Operations 0700 - 2100 Night 1800 - 1000		PLANNING OPS	CHARLES TUSS
5. Incident Commander and Staff		FIELD OPS	STEVE CHRISTMAN/PAT HARTY(T)
Incident Commander		Divisions	
Deputy	JOHN THOMPSON	M	WARD HESTERMAN
Safety Officer	GARY KIRPACH/ MIKE HAYES /DUANE HARP / MIKE DARDIS/ ISAAC KARUZAS(T)	MCDONALD STRUCTURE PROTECTION	JOE CASEY/ BILL BROOKS (T)
Information Officer	SARA ROUSE/ANNA CALLAHAN	ADAIR STRUCTURE PROTECTION	JOHN UELAND / ANDREA MATOS (T)
Liaison officer	MARIANNE BAUMBERGER	W	JUSTIN SINGER
6. Glacier National Park Representatives		ELDER CREEK	UNSTAFFED
Superintendent	JEFF MOW	NIGHT	
Assist Superintendent	ERIC SMITH	APGAR STRUCTURE	JOHN UELAND/ANDREA MATOS (T)
Chief Ranger	PAUL AUSTIN		
Fire Management Officer	DAVE SOLEIM		
Duty Officer	JEREMY HARKER		
Resource Advisor	DAN JACOBS		
7. Planning Section			
Chief	BARB THOMPSON/ BILLY PHILLIPS		
Resource Unit	SARA DRIEMEYER/ LAURIE BLINN/ MARLA RODGERS		
Documentation Unit	SARA DRIEMEYER		
Situation Unit	BILLY PHILLIPS		
Demobilization Unit	SARA DRIEMEYER/ LAURIE BLINN		
Status Check-in	MAPLE STUIVENGA		
GIS Specialist	SHAWNA LEA/ SARAH WEMPEN		
Fire Behavior	BRUCE GIERSDORF		
Meteorologist	PHIL MANUEL	A. Air Operations Branch	
8. Logistics Section			
Chief	JOHN LANE/ RONNIE HAYES(T)	Air Ops Branch Director	KEVIN BROWN
Supply Unit		Air Support Supervisor	
Facility Unit	ROGER OLSEN(T), CARL PATTEN(T)		
Food Unit	DENNIS BROGGER	Air Tanker Coordinator	
Ground Support Unit	ED COON		
Security Unit	MICHAEL O'MAHONEY	10. Finance	
Communications Unit	RAY ADAMS	Chief	ANN VOGT
Medical Unit	CHRIS REICHERT / ANITA PARKIN	Cost Unit	MICHELLE PAGE (T)
Prepared by:			



Incident Fire Weather Forecast



FORECAST NO: 22

NAME OF FIRES: Sprague / Adair Peak / Elder Cr.

PREDICTION FOR: 0700 Wed. – 0700 Thu.

UNIT: NPS Glacier NP

SHIFT DATE: Wednesday, September 13, 2017

SIGNED:

Phil Manuel
Incident Meteorologist

TIME AND DATE

FORECAST ISSUED: 1900 September 12, 2017

**...Wind Shift This Evening...
...Increasing Moisture...**

WEATHER DISCUSSION: Big change in the weather is coming over the next 24 to 48 hours as shift in the weather pattern takes place. Cold air will finally infiltrate the Northern Rockies with an opportunity for measurable rainfall, and possibly snow for the higher elevations. Before the cold air gets here, there is concern for gusty winds prior to the arrival of any moisture. Winds are expected to shift to the northeast this evening and continue into Thursday before any meaningful rainfall begins. A northeast wind is unfavorable for the fires we are managing.

WEATHER FORECAST FOR WEDNESDAY (DAY-SHIFT): *** HEADS UP FOR WIND SHIFT***

WEATHER: Wind shift this evening around 1800. Increasing cloudiness. A slight chance of showers this afternoon. Gusty afternoon westerly breeze, shifting to the northeast.

TEMPERATURES: 3500-5000ft: 68-73°, 5500-7500ft: 58-67°.

HUMIDITY: Minimum 25-30% valleys, 30-35% upper slopes and ridge top.

20 FT WINDS:

RIDGETOP – West-southwest 10 to 20 mph, shifting to the northeast after 1800 with gusts 30 mph.

SLOPE/VALLEY – West-southwest 5 to 15 mph, shifting northeast after 1800 gusts 20-25 mph.

HAINES INDEX: 3 very low.

LAL: 1

CWR: 10

TONIGHT (NIGHT-SHIFT):

Breezy with a chance of showers. Turning cooler. Min temperatures 42-47° valleys, 36-42° slopes and ridgetops. Max RH 70-80% valleys and ridgetops. Ridgetop winds: Northeast 15-25 mph, gusts of 30 mph. Valley winds: Northeast 5 to 15 mph with gusts 20 to 25 mph.

LAL: 1 **CWR:** 30

OUTLOOK FOR THURSDAY:

Cloudy with light rain or drizzle developing. Highs 47 to 52° valleys, and 38 to 46° slopes/ridges. Min RH 50 to 70%. Ridgetop winds: Northeast 15 to 25 mph. Slope valley winds: Northeast 5 to 15 mph.

Haines Index: 2 very low.

LAL: 1

CWR: 70

EXTENDED FORECAST (Thursday Night, Friday & Saturday):

Periods of rain Thursday night and Friday with snow at the higher elevations. Snow level lowering to near 6,000 feet. High humidity. Precipitation ending Saturday, but remaining cold with partial clearing. Highs 40 to 50 Friday and 45 to 55 Saturday. Lows 30 to 40. Min RH 60-80% Friday and 40 to 60% Saturday. Winds northeast 5 to 15 mph.

Please email weather observations, including pictures of smoke/fire behavior...

phillip.manuel@noaa.gov

Sprague / Adair Peak / Elder Creek - General Weather Outlook

For Planning Purposes Only, see the Official Forecast

Forecast made 12 Sep/1700 - Incident Meteorologist (IMET) Phil Manuel

Day	Wind Shift		Rain / Higher Elv. Snow		Rain	
	Wed	Thu	Fri	Sat	Sun	Mon
	13-Sep	14-Sep	15-Sep	16-Sep	17-Sep	18-Sep
Clouds @ 1500 (%)	50	100	100	60	25	80
Avg. Max Temp (F)	71	52	48	55	63	61
Min Humidity (%)	27	65	65	40	31	45
Ridge Wind (mph)	15	18	9	4	8	12
Wind Direction*	WSW/NE	NE	NE	VRBL	SW	SW
Snow Level	9kft	7-8kft	6kft	6kft	8kft	9kft
Precip Chance (%)	10	70	70	10	0	30
Haines Index	3	2	2	2	3	2
KEY:	Moderate Burning Conditions	Take Caution - Critical Burning Conditions		Extreme Burning Conditions		
	Clouds	>30%	15	to	30	<15%
Avg. Max Temp	<70F	70	to	80	>80F	
Min Humidity	>30%	20	to	30	<20%	
Ridge Wind	<10mph	10	to	20	>20mph	
*Wind Direction	NNW Through NNE Wind Direction Would be Criticality When It Occurs					
Snow Level						
Precip Chance	>30%	20	to	30	<20%	
Haines Index	< 4	5	6			

Five or more EXTREME blocks in a day equals the potential for a Critical Weather Day

This forecast matrix was developed for the Sprague / Adair Peak / Wildfire and uses criteria specific for this incident. Every incident will respond to conditions differently and adjustments to the formulas and or categories used may be needed.

FIRE BEHAVIOR FORECAST

FORECAST NUMBER: 21
NAME OF FIRE: Sprague / Adair Peak /
Elder Creek

PREDICTION FOR: Day Shift / Night Shift
SHIFT DATE: 9/13/17

UNIT: Glacier NP

TIME AND DATE FORECAST ISSUED: 9/12/2017, 1900 Hours

SIGNED:  FIRE BEHAVIOR ANALYST

Weather Summary: See attached Fire Weather Forecast.

Fire Behavior - General

All fires will be active today with the gusty afternoon west winds. Wind shift to the Northeast and increasing after 1800. Heat along the perimeter will gather strength and get organized. The fuel bed is still very dry and fire will move rapidly when fuel, topography and wind align. Expect an active burning period from 1600-2200.

Sprague Fire - Specific:

DIV M: Mt Brown / Lower Snyder Creek: Fire will flank and back from the shoulder of Mt. Brown down toward lower Snyder Creek and the McDonald Lake Lodge and work up valley on mid and upper slopes. Expect active surface spread with torching and spotting. Look for roll out from the slope overs on the west side of Mt. Brown. When northeast winds come about in the afternoon look for fire spread to occur in a southwest direction following terrain and fuel.

DIV W: Fish Lake / Snyder Ridge: Fire will back and flank downhill toward Going to the Sun Road.

Lincoln Creek: Fire is established in creek bottom and will move up the side slopes toward Snyder Ridge and up valley in Walton Creek with active surface fire, torching and spotting where fuels and slope align.

Walton Creek: Expect active surface fire with torching and spotting where fuels and slope align. Expect possible movement toward the Harrison drainage then southwest toward North Fork Flathead River after 1800.

Structure Group/IA: Kalispell Dispatch Area ERC is still at 51 – between the 90th and the 97th percentile.

Adair Peak Fire - Specific:

North side – Mixed Conifer on slopes down to Logging Lake. Expect backing, flanking, torching, roll out and possible spotting up valley toward the upper Logging Lake patrol cabin.

South Side – Open canopy Tamarack and mixed conifer regen in Wolf Gun Burn (2003). Continued activity on northwest slope of Wolf Gun Peak. Expect surface spread, group torching and spotting. Slope and fuels driven runs.

Elder Creek Fire - Specific:

North Fork Flathead – Fuels are mainly closed canopy Lodgepole pine. Expect backing, flanking, torching, and roll out as wind pushes fire back onto itself. The potential for the fire to become active and move southwest when winds shift direction late in the day.

Kishenehn/Spruce Creek – Open canopy Spruce-fir, Douglas-fir and Tamarack. Expect flanking, surface spread, torching, and spotting to the northeast.

Weather and Fire Behavior Trigger Points: Thresholds from Kalispell Dispatch Area Pocket Card

- 20' Wind Speed over 10 mph, RH less than 25%, Temperature over 85, 1000-Hour Fuel Moisture less than 15%

Spread Rates/Spotting/Flame lengths	ROS	FL	Crown Fire ROS	Spotting	PIG
165 – High load Timber – Shrub	8-10 ch/hr	7 ft	30 ch/hr	0.3 miles	Up to 65%
185 – Cedar/Hemlock	5	2	30	0.3	Up to 65%
183 – Moderate Load Conifer Litter	2	1-2	30	0.3	Up to 65%

Air Operations: Areas of morning inversion until around 1300 may inhibit air ops.

Safety: Develop good Situational Awareness. Look Up, Down and Around

ASSIGNMENT LIST		1. Branch	2. Division/Group				
3. Incident Name SPRAGUE		4. Operational Period Date: 09/13/2017					Time: 0700 - 2100
5. Operations Personnel							
Operations Chief	Steve Christman Pat Harty(T)		Division/Group Supervisor		Ward Hesterman		
Safety Officer	Gary Kirpach		Air Support Group Supervisor		Kevin Brown		
6. Resources Assigned This Period							
Strike Team/Task Force/ Resource Designator	Last Shift	Leader	No. Pers.	Trans. Needed	Drop Off PT./Time	Pick Up PT./Time	
O-208 TFLD	9/22	Nicholas Jeros	1	N	DP1 / 0700	DP1 / 2100	
O-2.9 WFM Saguario* (EMT)	9/18	Jon Freeman	8	N	DP1 / 0700	DP1 / 2100	
E-69 ENG4 Outback Firefighting	9/20	Aiden Stewart	3	N	DP1 / 0700	DP1 / 2100	
E-70 ENG4 Great Basin Fire	9/24	Hal Stoker	3	N	DP1 / 0700	DP1 / 2100	
E-75 ENG6 Ring of Fire* (EMT)	9/13	Ryan Schlater	3	N	DP1 / 0700	DP1 / 2100	
E-76 ENG6 6152	9/13	Wayne Briniger	3	N	DP1 / 0700	DP1 / 2100	
E-93 ENG6 Flat Rock	9/18	Cody Blair	3	N	DP1 / 0700	DP1 / 2100	
E-119 ENG6 Spear Lake	9/26	Dan Delorme	3	N	DP1 / 0700	DP1 / 2100	
E-80 WTS2 Wendt Trucking	9/18	JD Wendt	1	N	DP1 / 0700	DP1 / 2100	
E-81 WTS2 Sleepy Hollow	9/18	John Goodman	1	N	DP1 / 0700	DP1 / 2100	
E-100 WTS1 Montrose Hell Fighters	9/18	James Robinson	1	N	DP1 / 0700	DP1 / 2100	
E-101 WTS1 AJ Construction	9/18	JD Parsons	1	N	DP1 / 0700	DP1 / 2100	
E-112 Mini Excavator	9/23	Chance Gabbert	1	N	DP1 / 0700	DP1 / 2100	
7. Control Operations							
Tasks:							
<ul style="list-style-type: none"> ➤ Monitor the fire progression along the west flank of Mount Brown and monitor fire spread towards Mt. Brown Lookout. ➤ Look for opportunities to check fire spread toward the Lake McDonald Complex. ➤ Utilize aviation including CL-415's as necessary. ➤ Assess control options along the Going to the Sun Road. ➤ Continue with structure protection on the north end of Lake McDonald Complex. Continue to run Rain for Rent sprinklers. ➤ Utilize mini excavator and dump trucks to remove larger fuels. ➤ Continue to test structure protection equipment in Avalanche Creek Area. 							
Purpose: Continuously seek opportunities to stop fire spread to the west. Implement protection strategies for values at risk.							
End State: Season ending event occurs with no significant injuries and minimum impacts to identified NPS values at risk and private lands.							
8. Management Action Points							
<ul style="list-style-type: none"> ➤ DIVS: See MAP atlas for exact MAP line locations and action requirements. ➤ Fire has crossed a portion of MAP#15. If fire crosses additional portions of MAP#15 or MAP#16 contact Operations. <ul style="list-style-type: none"> • MAP #15 is north south line at approximately a fuel type change from mixed conifer to cedar-hemlock. • MAP #16 is a north south line approximately ¼ mile east of the Going to the Sun Road. 							
9. Special Instructions							
➤ For any incidents involving public visitors, LE or EMS, contact Sprague Communications on Command channel 8.							
10. Communications							
Function	Frequency - RX	Frequency - TX	Tone	Channel	Comments		
Command (primary)	170.4125	165.9625	TX / 114.8	8			
Command	170.0125	165.2500	TX / 114.8	7			
Tactical	168.0500	168.0500	114.8	1			
Air to Ground	168.0125	168.0125		13			
Prepared by (RESL)		Approved by (PSC) <i>B. Thompson</i>		Date 09/12/2017	Time 2000		

ASSIGNMENT LIST		1. Branch	2. Division/Group			
3. Incident Name SPRAGUE		4. Operational Period Date: 09/13/2017		Time: 0700 - 2100		
5. Operations Personnel						
Operations Chief	Steve Christman Pat Harty (T)		Division/Group Supervisor	Justin Singer		
Safety Officer			Air Support Group Supervisor	Kevin Brown		
6. Resources Assigned This Period						
Strike Team/Task Force/ Resource Designator	Last Shift	Leader	No. Pers.	Trans. Needed	Drop Off PT./Time	Pick Up PT./Time
O-114 ICT5	9/14	Nathan Maurer	1	N	DP20 / 0700	DP20 / 2100
O-115 FFT2	9/14	Calvin Ballenger	1	N	DP20 / 0700	DP20 / 2100
O-119 FFT2	9/14	Rick Yates	1	N	DP20 / 0700	DP20 / 2100
O-126 FFT2	9/14	Naomi Mills	1	N	DP20 / 0700	DP20 / 2100
O-127 ICT4-t	9/14	Chris Surgenor	1	N	DP20 / 0700	DP20 / 2100
O-1047 THSP		John Helton	1	N	H2 / 1000	DP20 / 2100
7. Control Operations						
Tasks: <ul style="list-style-type: none"> ➤ Aggressively mop up all spots at Sperry Complex. ➤ Monitor fire progression along west flank and into Lincoln Creek and south flank of Walton Creek. ➤ Monitor fire progression west of Snyder Ridge. ➤ Continue bucket work as needed, if conditions allow. Utilize CL-415's as appropriate. <p>Purpose: Implement protection strategies for values at risk.</p> <p>End State: Season ending event occurs with no significant injuries and minimum impacts to identified NPS values at risk and private lands.</p>						
8. Management Action Points						
<ul style="list-style-type: none"> ➤ DIVS: See MAP atlas for exact MAP line locations and action requirements. ➤ Fire has crossed a portion of MAP#15. If fire crosses additional portions of MAP#15 or MAP#16 contact Operations. <ul style="list-style-type: none"> • MAP #15 is a north south line at approximately a fuel type change from mixed conifer to cedar-hemlock. • MAP #16 is a north south line approximately 1/4 mile east of the Going to the Sun Road. 						
9. Special Instructions						
<ul style="list-style-type: none"> ➤ For any incidents involving public visitors, LE or EMS, contact Sprague Communications on Command, channel 8. ➤ Take weather observations hourly and call in to Communications. 						
10. Communications						
Function	Frequency – RX	Frequency – TX	Tone	Channel	Comments	
Command (primary)	170.4125	165.9625	TX / 114.8	8		
Command	170.0125	165.2500	TX / 114.8	7		
Tactical	168.2000	168.2000	114.8	2		
Air to Ground	168.0125	168.0125		13		
Prepared by (RESL)		Approved by (PSC)		Date	Time	
		<i>BTHamp</i>		09/12/2017	2000	

ASSIGNMENT LIST		1. Branch	2. Division/Group			
		McDonald Structure Protection				
3. Incident Name SPRAGUE		4. Operational Period Date: 09/13/2017		Time: 0700 – 2100		
5. Operations Personnel						
Operations Chief	Steve Christman Pat Harty (T)		Division Supervisor		Joe Casey / Bill Brooks (T)	
			Structure Protection Specialist		Kevin Smith	
Safety Officer	Mike Hayes		Air Support Group Supervisor		Kevin Brown	
6. Resources Assigned This Period						
Strike Team/Task Force/ Resource Designator	Last Shift	Leader	No. Pers.	Trans. Needed	Drop Off PT./Time	Pick Up PT./Time
C-3 Fort Apache IHC	9/15	Cathleen Lowe; Joaquin Garcia (T)	21	N	ICP / 0700	DP1 / 2100
O-207 TFLD	9/22	Dana Pelton	1	N	ICP / 0700	DP1 / 2100
O-125 TFLD (SMKJ) (*Avail for IA)	9/14	Tyler Keith	1	N	ICP / 0700	DP1 / 2100
E-105 ENG6 North Carolina E-621	9/16	Thomas Trout	3	N	ICP / 0700	DP1 / 2100
E-106 ENG6 Gas Fire	9/20	William Griffith	3	N	ICP / 0700	DP1 / 2100
E-108 ENG5 Red Lodge E-78	9/19	Hank Rae	2	N	ICP / 0700	DP1 / 2100
O-223.59 EMTF	9/25	Chris Reichert	1	N	ICP / 0700	DP1 / 2100
7. Control Operations						
Tasks: > Continue testing of structure protection equipment around Lake McDonald Complex. > Run Rain for Rent sprinklers on Lake McDonald Lodge Complex.						
Purpose: Install sufficient structure protection equipment to adequately protect Lake McDonald Complex.						
End State: Structures remain intact in the event the fire impacts Lake McDonald Complex.						
8. Special Instructions						
> *O-125 available for IA > For any incidents involving public visitors, LE, or EMS, contact Sprague Communications on Command channel 8. > Assess how to get sprinkler system off of the Lake McDonald Lodge water source.						
9. Communications						
Function	Frequency – RX	Frequency – TX	Tone	Channel	Comments	
Command (primary)	170.4125	165.9625	TX / 114.8	8		
Command	170.0125	165.2500	TX / 114.8	7		
Tactical	166.7250	166.7250	114.8	4		
Tactical (Maroon)	154.2800	154.2800	TX / 156.7	6		
Air to Ground	168.0125	168.0125		13		
Prepared by (RESL)		Approved by (PSC) <i>BThompson</i>		Date	Time	
				09/12/2017	2000	

ASSIGNMENT LIST		1. Branch	2. Division/Group				
			Law Enforcement / Evacuation				
3. Incident Name		4. Operational Period			Time: 0700 - 2100		
SPRAGUE		Date: 09/13/2017					
5. Operations Personnel							
Operations Chief	Steve Christman Pat Harty (T)		Division/Group Supervisor	Law Enforcement: Mike O'Mahoney Evacuation: Paul Austin			
Safety Officer			Air Support Group Supervisor	Kevin Brown			
6. Resources Assigned This Period							
Strike Team/Task Force/ Resource Designator	Last Shift	Leader	No. Pers.	Trans. Needed	Drop Off PT./Time	Pick Up PT./Time	
O- 24 SEC 1 L-21/Lead LE	9/18	Mike O'Mahoney	1	N	ICP / 0600	ICP / 2100	
O-94 SEC1 L-24/Night Team Lead	9/15	Tim Lopez	1	N	ICP Roving / 1800	ICP Roving / 0900	
O-171 SEC1 W-12	9/17	Joshua Stek	1	N	St.Marys / 1800	St.Marys / 0900	
O-250 SEC2 Camp Security	9/24	Mitch Lawler	1	N	ICP / 1800	ICP / 0900	
O-195 SEC1 L-25	9/20	Ramon Caballero	1	N	Apgar TP / 0600	Apgar TP / 1800	
O-193 SEC1 L-22	9/20	William See	1	N	St Marys / 1800	St Marys / 0900	
O-181 SEC1 L-26	9/20	Pete Walker	1	N	Apgar TP/ 1800	Apgar TP / 0900	
O- 205 SEC 1 L-27	9/20	Rick Blair	1	N	Logan / 0600	ICP / 1800	
O- 192 SEC 1 L-28	9/20	James Purcell	1	N	LML / 1800	LML / 0900	
O- 194 SEC 1 L-29	9/20	Nathen Snyder	1	N	Apgar / 1800	Apgar / 0900	
O- 180 SEC 1 L-30	9/21	Justin Repine	1	N	ICP / 0600	ICP / 2100	
O- 212 SEC 1 L-31	9/21	Cody Harwood	1	N	LML / 1800	LML / 0600	
7. Control Operations							
Tasks:							
<ul style="list-style-type: none"> ➤ Continue to provide for public safety and ensure visitor compliance with off limits areas affected by wildfire in GNP. ➤ Coordinate safe passage for fire team members and construction crews working in closure areas. 							
Purpose: To ensure a safe and secure working environment for members of the fire team.							
End State: To provide security coverage to closure areas designated by the fire management team and the park until they are deemed safe for the public.							
8. Special Instructions							
<ul style="list-style-type: none"> ➤ Report any security or law enforcement issues affecting the fire team to fire/security management or uniformed LEOs on the team. ➤ For any incidents involving public visitors, LE or EMS, contact Sprague Communications on Command channel 8. 							
9. Communications							
Function	Frequency - RX	Frequency - TX	Tone	Channel	Comments		
Command (primary)	170.4125	165.9625	TX / 114.8	8			
Command	170.0125	165.2500	TX / 114.8	7			
Command							
Tactical	166.9750	166.9750	173.8	5			
Air to Ground	168.0125	168.0125		13			
Prepared by (RESL)	Approved by (PSC)		Date		Time		
Marla Rodgers	<i>BTHom</i>		09/12/2017		2000		

ASSIGNMENT LIST		1. Branch	2. Division/Group			
3. Incident Name ADAIR STRUCTURE		4. Operational Period Date 09/13/2017		Time: 0700 - 2100		
5. Operations Personnel						
Operations Chief	Steve Christman Pat Hardy (T)		Division/Group Supervisor			
Safety Officer			Air Support Group Supervisor		Kevin Brown	
6. Resources Assigned This Period						
Strike Team/Task Force/ Resource Designator	Last Shift	Leader	No. Pers.	Trans. Needed	Drop Off PT./Time	Pick Up PT./Time
O-1027 NPS FFT2		Caleb Hjelle	1	N	Logging Lake / 0700	Logging Lake 2100
O-1036 NPS ICT5 / FFT1		Jake Maule	1	N	Logging Lake / 0700	Logging Lake 2100
Boat Operator		John Waller	1	N	Logging Lake / 0700	Logging Lake 2100
7. Control Operations						
Tasks: > Run pumps at Upper Logging Lake Patrol Cabin. > Monitor fire spread towards Upper Logging Lake Patrol Cabin. Purpose: Install adequate structure protection for these backcountry assets. End State: All structures are intact at the end of the incident.						
8. Special Instructions						
> For any incidents involving public visitors, LE, or EMS, contact Adair Peak/Sprague Communications on Command channel 7 or 8.						
9. Communications						
Function	Frequency - RX	Frequency - TX	Tone	Channel	Comments	
Command (primary)	170.0125	165.2500	TX / 114.8	7		
Command	170.4125	165.9625	TX / 114.8	8		
GNP Tactical	166.9750	168.9750	RX/TX 173.8	5		
Air to Ground	168.0125	168.0125		13		
Prepared by (RESL)		Approved by (PSC) <i>BThompson</i>		Date	Time	
				09/12/2017	2000	

ASSIGNMENT LIST		1. Branch	2. Division/Group			
3. Incident Name APGAR STRUCTURE		4. Operational Period Date 09/13/2017		Time: 0700 - 2100		
5. Operations Personnel						
Operations Chief	Steve Christman Pat Harty (T)		Division/Group Supervisor		John Ueland / Andrea Matos (T)	
Branch Director			Air Support Group Supervisor		Kevin Brown	
6. Resources Assigned This Period						
Strike Team/Task Force/ Resource Designator	Last Shift	Leader	No. Pers.	Trans. Needed	Drop Off PT./Time	Pick Up PT./Time
7. Control Operations						
Tasks: > Continue to assess Apgar area structures and park headquarters. > Begin developing structure protection resource needs list. Purpose: To install sufficient structure protection equipment to adequately protect Apgar area. End State: Structures remain intact in the event the fire impacts the Apgar area.						
8. Special Instructions						
> For any incidents involving public visitors, LE, or EMS, contact Adair Peak/Sprague Communications on Command channel 7 or 8.						
9. Communications						
Function	Frequency - RX	Frequency - TX	Tone	Channel	Comments	
Command (primary)	170.0125	165.2500	TX / 114.8	7		
Command	170.4125	165.9625	TX / 114.8	8		
GNP Tactical	166.9750	168.9750	RX/TX 173.8	5		
Air to Ground	168.0125	168.0125		13		
Prepared by (RESL)	Approved by (PSC) <i>BThompson</i>			Date	Time	
				09/12/2017	2000	

1. INCIDENT NAME: Sprague, Adair Peak, Elder Ck.	2. OPS PERIOD DATE: 9/13/2017	START TIME: 08:00	END TIME: 20:00	SUNRISE: 07:09 OFFICIAL	SUNSET: 19:54 OFFICIAL
---	--	------------------------------------	----------------------------------	---	--

3. Risk Assessment Mitigations, Special Instructions, and Remarks:
 Do appropriate level of risk management for all assigned missions—Assess mission complexity and the benefit/risk of the mission. *Be aware of gusty winds & potential increased fire behavior.*
Prior to flights north of Polebridge, notification must be made to Kalispell Dispatch for U.S. / Canada border airspace clearance. Squawk 1255
KNF/FNF Late Season Operations: Tactical Aviation Ops from Aug 15 to end of season shall be conducted only from official sunrise to official sunset.
Aquatic Invasive Prevention: Know the Protocols! High Pressure/Hot Water Rinse for AIS treatment decontamination locations at Kalispell (S27), Libby (S59), and Hungry Horse Helibase.
Private Aircraft operating out of the privately owned airstrip (KOA), make sure all pilots are monitoring Unicom frequency 122.9, ensure notification from ground to air on any known aircraft in area.

4. READY ALERT A/C:
 5AE w/ litter kit
MEDIVAC- Order thru Kalispell Dispatch (KIC)

5. TFR: No TFR in place
INCIDENT: 126.8250
UNICOM: 122.9000

6. PERSONNEL	NAME	PHONE #	7. FREQUENCIES	type	Freq.	8. FIXED-WING Avail/ Type/ Make-Model/ N#/ Base
GNP FMO	Dave Soleim	406-471-0182	Sprague/Adair/Elder Air/Air	AM	126.8250	AIRTANKERS- Order as needed through Dispatch
Kalispell Dispatch	- Aircraft Desk	406-758-5306	Sprague/Adair/Elder A/G	FM	168.0125	LEAD PLANES- Order as needed through Dispatch
AOBD	Kevin Brown	406-570-6606	DECK - KOA HB	FM	163.1000	ATGS AIRCRAFT- Order as needed through Dispatch 4QS at Libby AP (S59) 9AK at Kalispell AP (GPI)
HEB2 (T) (KOA)	Brandon Spencer	406-861-5298	FNF IA Air/Air	AM	127.0250	DETECTION- Order as needed through Dispatch 29X or 7DL (KIC) ORDER 91M (DNRC)
5AE (HMGB)	Cammy Roy	907-750-6620	FNF Primary IA A/G	FM	169.1250	SEATs- will be ordered as needed through Dispatch
577 (HMGB)	Joe Names	928-965-2152	KIC IA A/G 2	FM	166.9000	
Water Tender	Bad Rock (E-23)	use DECK freq	DNRC Yellow A/G	FM	151.2200	Scoopers - will be ordered as needed through Dispatch
Zone FAO	Deborah Lampton	406-291-2848	Life Flight A/G TAN	FM	155.340	
DNRC	Jesse Best	406-212-4822	Air Guard	FM	168.625 TT 110.9 TX	KIC (Kalispell Dispatch): 406-758-5260
Hungry Horse Helibase (direct)	Lynn Emerick	406-387-3864	National Flt Follow	FM	168.650 TT 110.9 TX	
HEB2 (Hungry Hrs)	Lynn Emerick	406-291-2847	FNF Direct (KIC)	FM	164.3750 TT110.9 TX	

9. HELICOPTERS (Assigned at KOA or Borrowed from Hungry Horse)

FAA N#	TY	MAKE/ MODEL	BASE	Start	REMARKS	FAA N#	T Y	MAKE/ MODEL	BASE	Start	REMARKS
5AE	3	AS 350	KOA	08:30	Recon / Pax / Sling / Bucket	4QS	1	AC-500	S59 Libby	08:30	ATGS Alan Osborn
577	2	UH-1H	KOA	08:30	Sling / Bucket	9AK	1	AC-500	GPI Kalispell	08:30	ATGS Gordon Amundson
9a. Helicopters Shared/Borrowed from nearest neighboring Helibase:											
414	1	Kmax	Hungry Horse	08:30	Bucket Work - request if needed	BD-151		AC-690B	GPI Kalispell	08:30	Aerial supervision - scoopers
2D	2	UH-1H	Hungry Horse	08:30	Bucket Work - request if needed	S-270		CL-415	GPI Kalispell	08:30	Scooper
6PJ	3	Bell 407	Hungry Horse	08:30	IA, Recon - Request as needed	S-273		CL-415	GPI Kalispell	08:30	Scooper

SAFETY MESSAGE

September 13, 2017

Adaptability/Flexibility

Definition: The ability to alter a course of action based on new information, maintain constructive behavior under pressure, and adapt to internal and external environmental changes.

Critical Fire Weather- Be heads up and maintain good situational awareness, and Utilize L.C.E.S.

When in doubt remember to ask:

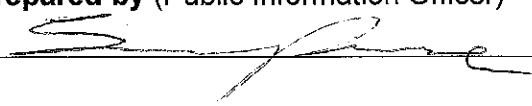
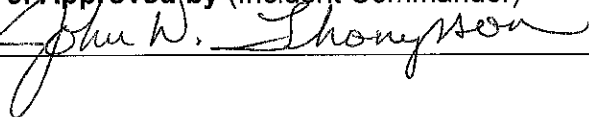
- 1- Who you work for
- 2- Who works for you
- 3- How do get ahold of them
- 4- What is your location on the map

You are all ultimately responsible for your own safety

Lookouts Communications Escape Routes Safety Zones

Safety Officers: *Michael Dardis, Gary Kirpach, Mike Hayes, Duane Harp, and Isaac Karuzas*



PUBLIC INFORMATION PLAN	1. Incident Name: Sprague, Adair Peak, Elder Creek	2. Operational Period Date: 9/13/2017 From: 0700 to 2100
<p>3. Employee use of cameras, texting, and social media</p> <p>Per Glacier National Park's policy, any photos taken within the <u>closed</u> area must be made publically available on Inciweb, Glacier National Park's website or Glacier National Park's social media accounts <u>prior</u> to being posted on a personal social media account.</p> <p>Do not post:</p> <ul style="list-style-type: none"> • Fireline personnel not wearing full PPE • Identifiable structures (i.e. addresses/names) or burning/burned structures • Faces of children (NPS requires a signed release form) • Accident or investigation scenes • Sensitive natural or cultural resources or QR codes to maps identifying these locations • Whiteboards/Flipcharts with internal contacts or passwords <p style="text-align: center;">Stay Alert!</p> <p>Don't let taking a picture or sending a text distract you and jeopardize your or someone else's safety.</p>		
<p>4. Answering general questions from the public</p> <p>As firefighting resources you are representing your respective organization and the host agency. Be on your best behavior, you are in the public eye as a professional and national resource.</p> <p>You should not hesitate to answer any <u>general</u> questions about wildland fire or the current fires. When asked a question, be polite, friendly, kind, and courteous. If asked questions about overarching policies do not give your personal opinion or guess, refer the individual to the Incident PIO.</p>		
<p>5. Release of incident information</p> <p>Public Information Officers are assigned to the fire to provide current information to the public and the news media.</p> <p>Release of specific or sensitive information about the fire requires advance approval of the Incident Commander or his/her designee.</p>		
<p>6. Media and VIP access to closed areas and to the fireline</p> <p>As an Incident Management Team, it is our policy to provide news media access to incidents, including wildland fires when it is safe to do so.</p> <p>Members of the media and VIPs may be escorted into closed areas and to the fireline with prior approval of the Incident Commander or his/her designated representative.</p> <p>Visitors to the fireline are required to wear Personal Protective Equipment, receive a safety briefing, and must be escorted by a person qualified as a single resource boss or other appropriate escort approved by the Incident Commander.</p>		
<p>7. Contact and Information Sources</p> <p>Fire Info Phone: 406.387.9092 (staffed 8 am to 8 pm; after hours recording)</p> <p>Facebook: https://www.facebook.com/GlacierNPS Twitter: https://twitter.com/GlacierNPS</p> <p>Park Website: https://nps.gov/glac</p> <p>Fire info Boards at Camas, Apgar and West Glacier</p>		
<p>8. Prepared by (Public Information Officer)</p> 	<p>9. Approved by (Incident Commander)</p> 	

INCIDENT RADIO COMMUNICATIONS PLAN I-205

1. INCIDENT NAME

Sprague/Adair Peak/Elder Crk

2. DATE/TIME PREPARED

09/10/2017 1700

3. OPERATIONAL PERIOD DATE/TIME

09/11/2017 0700-2100 Day Shift
09/11-12/2017 1800-1000 Night Shift

4. BASIC RADIO CHANNEL UTILIZATION

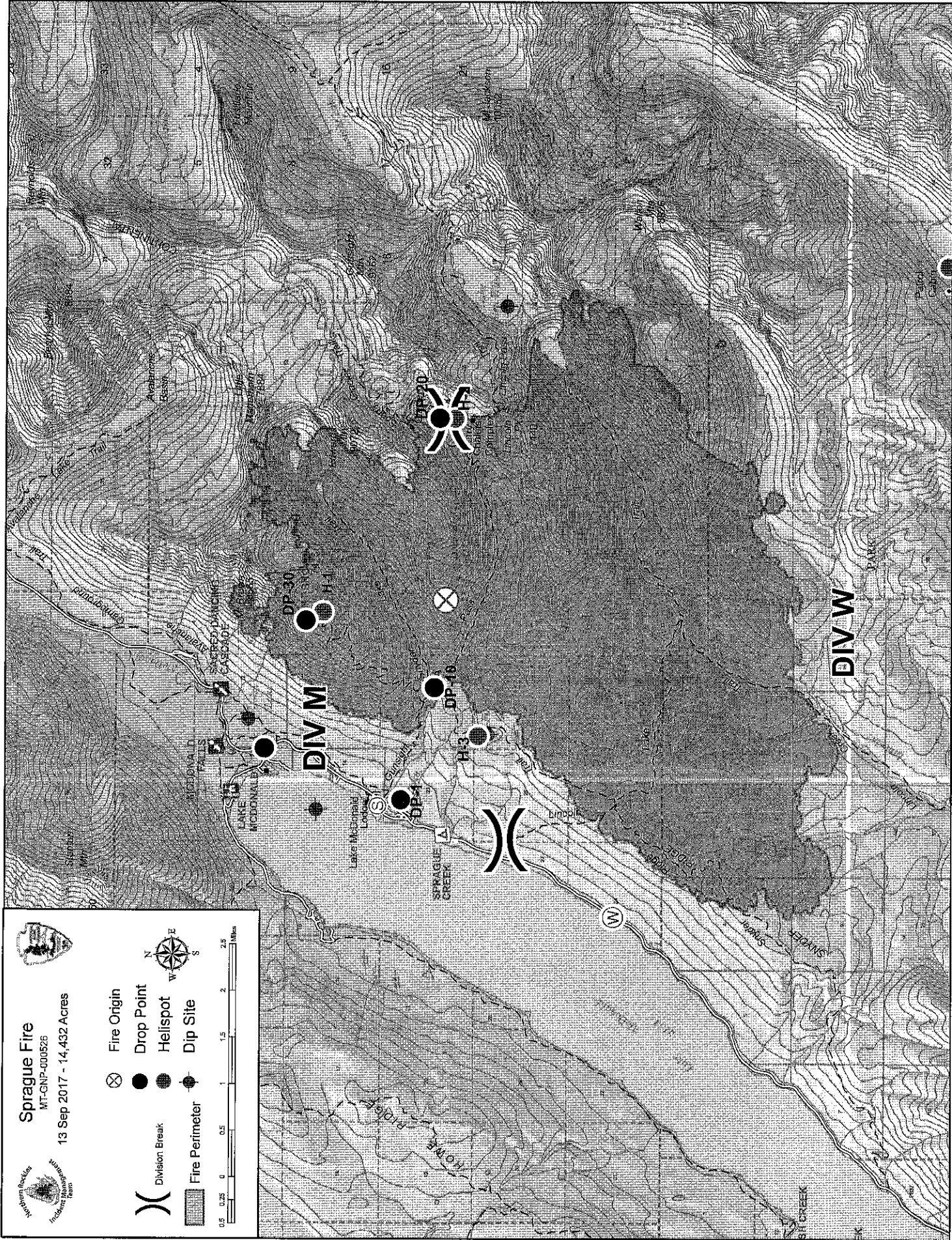
Ch #	Function	Channel Name	Assignment	RX Freq	NW	RX Tone/NAC	TX Freq	NW	TX Tone/NAC	Mode Analog (A) Digital (D) Mixed (M)	Remarks
1	TAC	TAC 1	DIV M	168.0500	N	114.8	168.0500	N	114.8	A	DIV M TAC
2	TAC	TAC 2	DIV W	168.2000	N	114.8	168.2000	N	114.8	A	DIV W TAC
3	TAC	TAC 3	I/A GRP	168.6000	N	114.8	168.6000	N	114.8	A	I/A DIV/ NIGHTS DIV TAC
4	TAC	TAC 4	STR PROT	166.7250	N	114.8	166.7250	N	114.8	A	STRUCTURE TAC
5	TAC	GNP TAC	LEO EVAC	166.9750	N	173.8	166.9750	N	173.8	A	LEO / EVAC TAC/ADAIR PK/ELDER CRK
6	TAC	MAROON	MUT AID	154.2800	N		154.2800	N	156.7	A	MUT AID / STRUCTURE
7	COMMAND	CMD 7	COMMAND	170.0125	N		165.2500	N	114.8	A	Command Repeater for Adair/Sprague/Elder
8	COMMAND	CMD 8	COMMAND	170.4125	N		165.9625	N	114.8	A	Command Repeater for Sprague/Adair/Elder
9	KIC RPTR	SCALPLOC	USFS RPTR	164.3750	N		165.2625	N	103.5	A	I/A Middle Fork
10	KIC RPTR	DESERT	USFS RPTR	164.3750	N		165.2625	N	107.2	A	KIC Forest Repeater
11	GNP RPTR	GLACIER1	GNP RPTR	166.3750	N		167.0250	N	156.7	M	I/A Glacier Park Repeater
12	GNP RPTR	GLACIER2	GNP RPTR	162.1625	N		167.0250	N	156.7	M	I/A Glacier Park Repeater
13	SPRAGUE A/G	SPRG A/G	AIR TO GROUND	168.0125	N		168.0125	N		A	Sprague/Adair Peak A/G
14	FLATHD A/G	FLT A/G	AIR TO GROUND	169.1250	N		169.1250	N		A	Flathead NF A/G
15	AIR MEDICAL	TAN	AIR MED	155.3400	N		155.3400	N		A	AIR MEDICAL/LIFE FLIGHT A/G
16	AIR GUARD	AIRGUARD	AIR EMERGENCY	168.6250	N		168.6250	N	110.9	A	AIR EMERGENCY

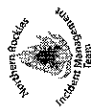
5. Special Instructions:

6. I-205 Prepared By: Communications Unit Leader



Name: Ray Adams


Signature:








Sprague Fire
MT-GNP-000526
13 Sep 2017 - 14,432 Acres

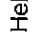



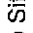
Division Break 

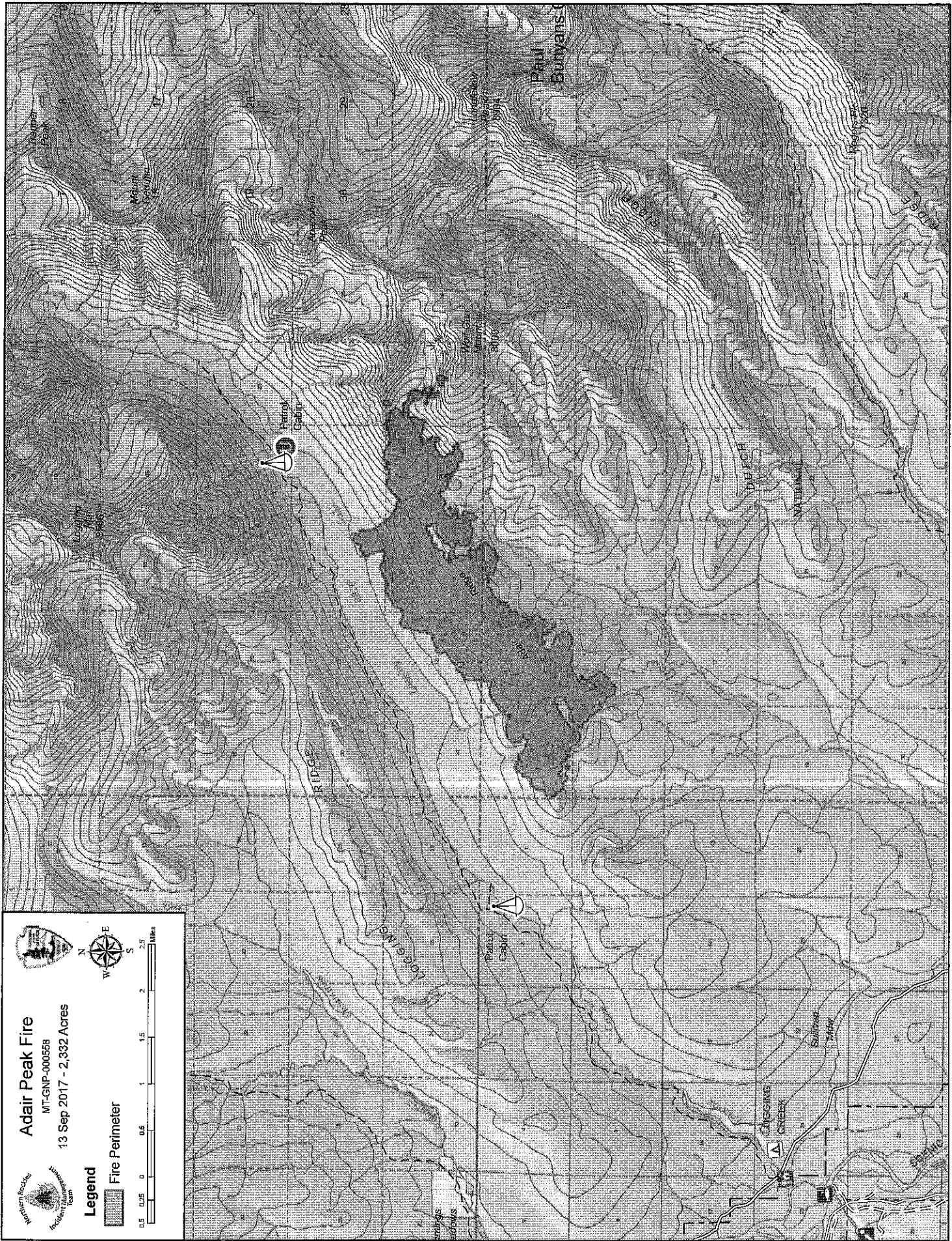
Fire Perimeter 

Fire Origin 

Drop Point 


Helispot 

Dip Site 

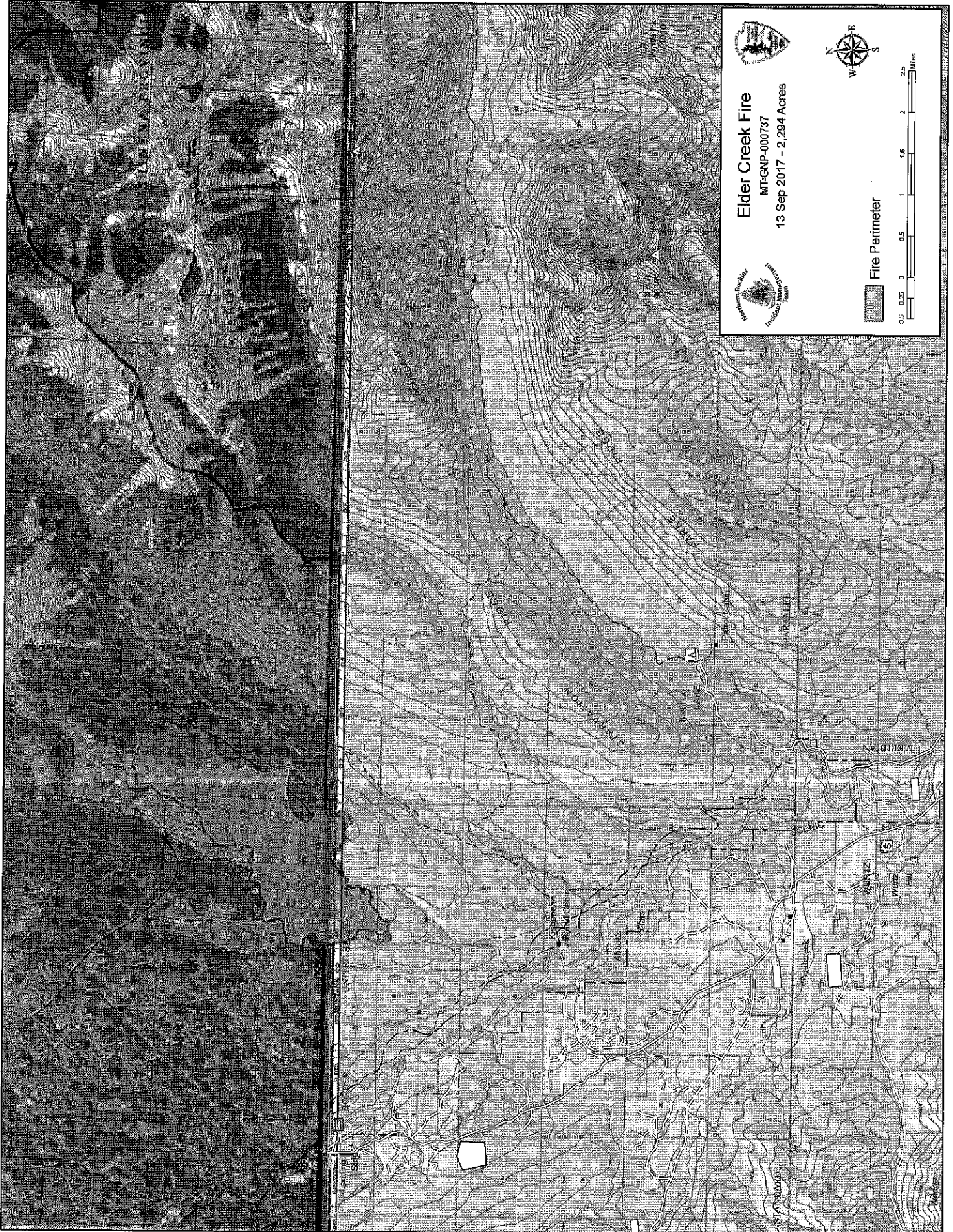


Adair Peak Fire
MT-GNP-000568
13 Sep 2017 - 2,332 Acres

Legend

 Fire Perimeter

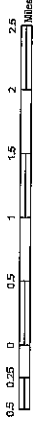




Elder Creek Fire
MTF-GNP-000737
13 Sep 2017 - 2,294 Acres



Fire Perimeter



1. Incident/Project Name		2. Operational Period					
SPRAGUE FIRE/ ADAIR FIRE/ ELDER CREEK FIRE		Date/Time September 13, 2017 Day Shift 0700-2100 Night Shift 1800-1000					
3. Ambulance Services							
Name	Complete Address	Phone & EMS Frequency		Advanced Life Support (ALS) Yes No			
Three Rivers Ambulance	31 7 th ST W Columbia Falls, MT	406-892-4244		X			
Whitefish Fire Dept	275 Flathead Ave Whitefish, MT	406-863-2483		X			
4. Air Ambulance Services							
Name	Phone	Type of Aircraft & Capability					
ALERT AIR AMBULANCE		Paramedics, flight nurse, Night Vision, Talk on A/G Tan Channel # 15.					
MERCY FLIGHT		Fixed wing and Rotary wing. Paramedic and flight nurse. Night vision. Talk on A/G Tan Channel # 15.					
TWO BEAR AIR (Hoist Ship)		Rotary wing. Rescue and hoist, Night Vision. Paramedic on board. Will extract & deliver to an ambulance for transport. Talk on A/G Tan Channel # 15.					
5. Hospitals							
Name Complete Address	GPS Datum – WGS 84 Coordinate Standard Degrees Decimal Minutes N – Lat DD° MM.MMM' W – Long DD° MM.MMM'		Travel Time Air Ground		Helipad Yes No		Level of Care Facility
	Lat:	Long:					
Kalispell Regional Medical Center 32 Sunnyview Lane Kalispell, MT 59901	N 48° 12.798'	W 114° 19.440'	15 min	75 min	<input checked="" type="checkbox"/>	<input type="checkbox"/>	Level 3
	VHF: 155.3400 Tan Channel						
North Valley Hospital 1600 Hospital Way Whitefish MT 59937	N 48° 12.82	W 114° 19.36	N/A	60 min	<input checked="" type="checkbox"/>	<input type="checkbox"/>	Critical Access
	VHF: 155.3400 Tan Channel						
Harbor View Medical Center 325 9 th Ave. Seattle WA. 98104	N 47° 36.180'	W 122° 19.493'	2.5 hrs.	8 hrs.	<input checked="" type="checkbox"/>	<input type="checkbox"/>	Level 1
	VHF: 155.3400 Tan Channel						
Benefis 1101 26 th S Great Falls, MT 59405	N 47° 29.509'	W 111° 15.590'	65 min	N/A	<input checked="" type="checkbox"/>	<input type="checkbox"/>	Level 2
	VHF: 155.3400 Tan Channel						
6. Division		Area, Location, Capability					
DIVISION M	EMS Responders & Capabilities:		None Assigned				
	Equipment Available on Scene:						
	Channel:		Command 8 and TAC 1				
	ETA for Ambulance to Scene:						
	Air:		30 min				
	Ground:		45 min				
	Approved Helispots:		n/a				

Division	Area, Location, Capability	
STRUCTURE PROTECTION	EMS Responders & Capabilities:	Chris Reichert, EMTF
	Equipment Available on Scene:	TRS, BLS Supplies, EPI, Trauma Kit
	Medical Emergency Channel:	Command 8 and TAC 4
	ETA for Ambulance to Scene:	
	Air:	15 min
	Ground:	45 min
	Approved Helispot:	n/a
	Lat:	
Long:		

6. Division	Area, Location, Capability	
DIV W	EMS Responders & Capability	None Assigned at this time.
	Equipment Available on Scene:	.
	Medical Emergency Channel:	Command 8 and TAC 2
	ETA for Ambulance to Scene:	
	Air:	30 min
	Ground:	n/a
	Approved Helispots:	
	Sperry Chalet:	N 48° 36.353' X W 113° 47.160' (H2)
Fish Lake:	N 48° 36.094' X W 113° 49.964' (H3)	

7. Division	Area, Location, Capability	
ADAIR FIRE	EMS Responders & Capability	None Assigned at this time.
	Equipment Available on Scene:	.
	Medical Emergency Channel:	Command 7 or tac 5
	ETA for Ambulance to Scene:	
	Air:	30 min
	Ground:	
	Approved Helispots:	

8. Division	Area, Location, Capability	
ELDER CREEK FIRE	EMS Responders & Capability	None Assigned at this time.
	Equipment Available on Scene:	.
	Medical Emergency Channel:	Human Repeater via Thoma Lookout on Command 7
	ETA for Ambulance to Scene:	
	Air:	30 min
	Ground:	
	Approved Helispots:	
Wurtz Cabin:	N 48° 53.93 W 114° 23.314	
Moose City Airstrip:	N 48° 59.753 W 114° 28.400	

9. ICP - CAMP	Incident Command Post (KOA West Glacier, MT)		
ICP	Point of Contact:	Anita Parkin, MEDL	
	EMS Responders & Capability:	Anita Parkin, AEMT	
	Equipment Available on Scene:	BLS Kit, AED, TRS, EPI	
	Medical Emergency Channel:	Command 8	
	ETA for Ambulance to Scene:	Estimate 25 minutes. (Three River Ambulance)	
	Air:	20 min	
	Ground:	30 min	
Approved Helispot:	N 48° 27.756 x W 113° 59.470' (KOA Helibase)		

10. Prepared By (Medical Unit Leader)	11. Date/Time	12. Reviewed By (Safety Officer)	13. Date/Time
Anita Parkin, MEDL <i>Anita Parkin</i>	09/12/17 1900 hrs.	Michael Dardis SOF2 <i>[Signature]</i>	09/12/17 1900 hrs.

MEDICAL PLAN (ICS 206 WF)

Medical Incident Report

FOR ALL MEDICAL EMERGENCIES: IDENTIFY ON SCENE INCIDENT COMMANDER BY NAME AND POSITION AND ANNOUNCE "MEDICAL EMERGENCY" TO INITIATE RESPONSE FROM IMT COMMUNICATIONS/DISPATCH.

Use items one through nine to communicate situation to communications/dispatch.

1. CONTACT COMMUNICATIONS/DISPATCH

Ex: "Communications, Div. Alpha. Stand-by for Priority Medical Incident Report." (If life threatening request designated frequency be cleared for emergency traffic.)

2. INCIDENT STATUS: *Provide incident summary and command structure.*

Nature of Injury/Illness		<i>Describe the injury (Ex: Broken leg with bleeding)</i>
Incident Name		<i>Geographic Name + "Medical" (Ex: Trout Meadow Medical)</i>
Incident Commander		<i>Name of IC</i>
Patient Care		<i>Name of Care Provider (Ex: EMT Smith)</i>

3. INITIAL PATIENT ASSESSMENT: *Complete this section for each patient. This is only a brief, initial assessment. Provide additional patient info after completing this 9 Line Report.*

Number of Patients:	Male / Female	Age:	Weight:
Conscious? <input type="checkbox"/> YES <input type="checkbox"/> NO = MEDEVAC!			
Breathing? <input type="checkbox"/> YES <input type="checkbox"/> NO = MEDEVAC!			
Mechanism of Injury: <i>What caused the injury?</i>			
Lat/Long (Datum WGS84) <i>Ex: N 40° 42.45' x W 123° 03.24'</i>			

4. SEVERITY OF EMERGENCY, TRANSPORT PRIORITY

SEVERITY	TRANSPORT PRIORITY
<input type="checkbox"/> URGENT-RED Life threatening injury or illness. <i>Ex: Unconscious, difficulty breathing, bleeding severely, 2° - 3° burns more than 4 palm sizes, heat stroke, disoriented.</i>	Ambulance or MEDEVAC helicopter. Evacuation need is IMMEDIATE.
<input type="checkbox"/> PRIORITY-YELLOW Serious Injury or illness. <i>Ex: Significant trauma, not able to walk, 2° - 3° burns not more than 1-2 palm sizes.</i>	Ambulance or consider air transport if at remote location. Evacuation may be DELAYED.
<input type="checkbox"/> ROUTINE-GREEN Not a life threatening injury or illness. <i>Ex: Sprains, strains, minor heat-related illness.</i>	Non-Emergency. Evacuation considered Routine of Convenience.

5. TRANSPORT PLAN:

Air Transport: (Agency Aircraft Preferred)

<input type="checkbox"/> Helispot	<input type="checkbox"/> Short-haul/Hoist	<input type="checkbox"/> Life Flight	<input type="checkbox"/> Other
Ground Transport: Click here to enter text.			
<input type="checkbox"/> Self-Extract	<input type="checkbox"/> Carry-Out	<input type="checkbox"/> Ambulance	<input type="checkbox"/> Other

6. ADDITIONAL RESOURCE/EQUIPMENT NEEDS:

<input type="checkbox"/> Paramedic/EMT(s)	<input type="checkbox"/> Crew(s)	<input type="checkbox"/> SKED/Backboard/C-Collar
<input type="checkbox"/> Burn Sheet(s)	<input type="checkbox"/> Oxygen	<input type="checkbox"/> Trauma Bag
<input type="checkbox"/> Medication(s)	<input type="checkbox"/> IV/Fluid(s)	<input type="checkbox"/> Cardiac Monitor/AED
<input type="checkbox"/> Other (i.e. splints, rope rescue, wheeled litter)		

7. COMMUNICATIONS:

Function	Channel Name/Number	Receive (Rx)	Tone/NAC *	Transmit (Tx)	Tone/NAC *
<i>Ex: Command</i>	<i>Forest Rpt, Ch. 2</i>	<i>168.3250</i>	<i>110.9</i>	<i>171.4325</i>	<i>110.9</i>
COMMAND					
AIR-TO-GRND					
TACTICAL					

*(NAC for digital radio system)

8. EVACUATION LOCATION:

Lat/Long (Datum WGS84) <i>EX: N 40 42.45' x W 123 03.24'</i>	
Patient's ETA to Evacuation Location:	
Helispot/Extraction Size and Hazards:	

9. CONTINGENCY: