

Tongue River Complex

MT-MCD-000163 PDK4YU (1502)

747003-DNRC

Incident Action Plan

JULY 16, 2017

Day Operational Period

0600 -2000

SUNDAY



INCIDENT OBJECTIVES	1. Incident Name Tongue River Complex	2. Date Prepared 07/15/2017	3. Time Prepared 2000
<p>Incident Priorities:</p> <ul style="list-style-type: none"> • All suppression and suppression repair actions shall place fire personnel, aviation, and public safety as the highest priority. • Use good risk analysis processes, the principles of the 10 Standard Fire Orders, LCES and the 18 Watch-Out Situations as the foundation for risk decisions. • Reduce exposure to fire personnel where possible. <p>Management Objectives:</p> <ul style="list-style-type: none"> • The protection of cultural and environmental resources is a high priority. Work with Resource Advisors on cultural features requiring priority protection within the Custer Gallatin National Forest, Bureau of Land Management property and BIA-Northern Cheyenne Agency. • Maintain good working relationships and prompt, accurate communication with Agency personnel, local and Tribal governments, and the local community. • Provide effective management of costs commensurate with resource values to be protected. Demobilize resources and equipment when no longer needed. <p>Operational Objectives:</p> <ul style="list-style-type: none"> • Keep fire contained within existing control lines. • Continue to support Agencies with Initial Attack resources as requested. • Continue suppression repair to meet Agency-provided guidelines. <p>Commanders Intent: To meet the intent of the stated objectives. Provide the highest level of customer services for all involved with, or affected by the incident. All assigned incident personnel will be prepared to take the appropriate actions regarding:</p> <ul style="list-style-type: none"> • Maintaining good situational awareness. • Personal interactions with others. This includes people within the incident organization, the host agency, public, and stake holders. • Managing an incident-within-an-incident. • Establishing and maintaining good communications to ensure all critical and important messages reach the appropriate people in a timely manner. 			
9. Prepared By (Planning Section Chief)		10. Approved By (Incident Commander) Adam Wolf	

Organization Assignment List, ICS Form 203

ORGANIZATION ASSIGNMENT LIST		1. INCIDENT NAME	2. DATE PREPARED	3. TIME PREPARED
		Tongue River Complex	07/15/2017	2000
POSITION	NAME	4. OPERATIONAL PERIOD (DATE/TIME)		
		07/16/2017 0600 - 2000		
5. INCIDENT COMMAND AND STAFF		9. OPERATIONS SECTION		
INCIDENT COMMANDER		PLANNING OPS		
DEPUTY		DEPUTY		
SAFETY OFFICER		a. FIELD OPERATIONS NORTH		
INFORMATION OFFICER		NORTH OPS	Adam Wolf	
LIAISON OFFICER		DEPUTY	Travis Limpy 406-740-0103	
		DIVISION/GROUP	Grant Steelman	
6. AGENCY REPRESENTATIVES		DIVISION/ GROUP		
AGENCY	NAME	DIVISION/ GROUP		
Northern Cheyenne	Jace Killsbuck	DIVISION/GROUP		
BLM	Diane Friez/Wendy Warren	DIVISION /GROUP		
BIA	Michael Addy			
DNRC	Chris Pileski			
Rosebud County	Ed Joiner County Supervisor	b. FIELD OPERATIONS SOUTH		
USFS		SOUTH OPS	Mitch Bloxham 406-853-3624	
		DEPUTY		
7. PLANNING SECTION		DIVISION/GROUP		
CHIEF		DIVISION/GROUP		
DEPUTY		DIVISION/GROUP		
RESOURCES UNIT				
SITUATION UNIT				
DOCUMENTATION UNIT				
DEMOBILIZATION UNIT				
RESOURCE ADVISORS				
GISS				
FBAN				
IMET				
STATUS CHECKIN				
8. LOGISTICS SECTION		c.		
CHIEF		BRANCH DIRECTOR		
DEPUTY		DEPUTY		
a. SUPPORT BRANCH		DIVISION/GROUP		
DIRECTOR		DIVISION/GROUP		
SUPPLY UNIT		DIVISION/GROUP		
FACILITIES UNIT				
GROUND SUPPORT UNIT				
SECURITY MANAGER				
b. SERVICE BRANCH		d. AIR OPERATIONS BRANCH		
DIRECTOR		AIR OPERATIONS BR. DIR.		
COMMUNICATIONS UNIT		AIR TACTICAL GROUP SUP.		
MEDICAL UNIT		AIR SUPPORT GROUP SUP.		
FOOD UNIT		HELICOPTER COORDINATOR		
		AIR TANKER/FIXED WING CRD.		
PREPARED BY (RESOURCES UNIT)		10. FINANCE/ADMINISTRATION SECTION		
		CHIEF	Miles City Dispatch	
		CLAIMS		
		TIME UNIT		
		PROCUREMENT UNIT		
		COMPENSATION / INJURY		
		COST UNIT		



INCIDENT Weather Forecast



FORECAST NO: 5 - Final

NAME OF INCIDENT: Tongue River Complex

PREDICTION FOR: 0700-2000

UNIT: MT-BLM, BIA – Northern Cheyenne Agency

SHIFT DATE: Sunday, July 16, 2017

SIGNED: *Phil Manuel*

TIME AND DATE

FORECAST ISSUED: 1800 Saturday, July 15, 2017

Phil Manuel

Incident Meteorologist

WEATHER DISCUSSION:

...Red Flag Warning From Noon Until Midnight For Strong Storms And Winds...
...Potential For 30 to 50 mph Wind Gusts...

Weather concern today is focused around the development of thunderstorms, and the potential for a thunderstorm gust front to cross the incident area containing winds of 30 to 50 mph, similar to the storms that moved through the district Monday. This gust front is forecast to come through during a time of peak heating...1500 to 1900 MDT. Temperatures preceding the gust front are forecast to be in the 90s.

WEATHER FORECAST FOR: (SUNDAY)

WEATHER: Breezy and Hot with shifting winds. Scattered thunderstorms. Greatest threat and coverage from 1500-1900.

TEMPERATURES: High 94 to 99. (unchanged)

HUMIDITY: Min RH 15-20% (unchanged).

20 FT WINDS: Southwest 8 to 15 mph with gusts of 25 mph...shifting to the northwest with the passage of the front (after 1500). *****Gusty and Erratic Winds In And Near Thunderstorms*****

HAINES: 4 (low) **CWR:** 20% **LAL:** 2 ... 1 to 8 strikes/15 min/cell

WEATHER FORECAST FOR: (SUNDAY NIGHT)

WEATHER: Front moves east of the area. Thunderstorm threat comes to an end by midnight.

TEMPERATURES: Cooler. Low 60 to 65.

HUMIDITY: Max recovery 67-72%.

20 FT WINDS: Northwest 10 to 15 mph... diminishing to less than 10 mph after midnight.

Smoke Dispersion: Good to Excellent. **CWR:** 20%

OUTLOOK: (MONDAY THROUGH WEDNESDAY)

Temperatures return to near normal. Highs 85 to 92. Lows in the 60s. There is to the potential for isolated thunderstorms during the week; please reference the daily National Weather Service Fire Weather Forecast (MTZ131) from Billings, MT.

If conditions become unrepresentative...contact the National Weather Service in Billings... 406-652-2936

Sunrise 5:33 AM MDT

Sunset 8:52 PM MDT

FIRE BEHAVIOR FORECAST

FORECAST NUMBER: 7	OPERATIONAL PERIOD: 7/16/17 0700-2000
FIRE NAME: Tongue River Complex	DATE/TIME ISSUED: 7/15/2017 @ 1930
UNIT: BLM/BIA	SIGNED: _____ Typed/printed: Robert Ziel (Zeke)

WEATHER SUMMARY

Red Flag Warning from noon until midnight for strong thunderstorms and shifting winds. Potential for erratic 30-50 mph wind gusts with storms.

Temp and RH: Max 94-99 deg, Min 15-20 %
20 Ft Winds: Southeast 8-15 mph with gust of 25 mph shifting to NW with passage of the front producing gusts of 30-50 mph.

Lightning Activity Level (LAL) of 2, **Chance of Wetting Rain (CWR)** 20%, **Haines** 4 (low)

Pocket Card Thresholds: Temps above 90, RH below 25, Poor overnight humidity recover (<35%), Fine Fuel Moisture < 5%, Windspeed 20mph at 20ft (8mph at eye level).

FIRE BEHAVIOR

GENERAL:

Expect **Red Flag conditions** to maintain very dry fuels for the gust front winds that arrive late afternoon from the thunderstorms. **Fine fuel moisture should be 3% and Probability of Ignition 90%** again today, meaning that lightning strikes are likely to find very favorable fuels. Think easy ignition, rapid acceleration, and intense burning for any possible start.

Heavy fuels under pine and juniper remain the greatest hazard to suppression action and control operations. It won't take long for them to build into passive and possibly active crown fire.

Bottoms and flats with grass are 80-90% cured, they burn to black and have supported successful burn operations. Gust front winds could threaten burn operations. Where sage and stringers of trees are mixed in, anticipate spotting across lines.

On existing fires, control lines are black and fire behavior has declined. There are still unburned pockets that hold heat and could exhibit a run or two. Winds on Saturday were a good test.

SPECIFIC:

Initial Attack: Be prepared for new ignitions that turn into intensely burning fires. Grass/sage could see spread of ¼ mph with flames of 4-6 ft under forecast winds. Spread in open timber with heavy fuel ¼ mph for most of the burn period. Anticipate spread rates of 1 mph or more with gust front winds that could produce crown fire behavior, especially on exposed slopes.

Witten North: Perimeter fuels are burned black leaving held line in pretty good shape.

Witten South: Scabby fuels on steep slopes inside the lines haven't and won't carry fire very well, leaving some incomplete burns. Where there is internal heat, expect winds to produce an increase in torching and spotting, though lines appear secure.

AIR OPERATIONS: Smoke dispersion excellent. With little smoke production on our fires or surrounding fires, there should be little impact on air operations.

SAFETY

This is the kind of day when fast developing fires call for extended attack forces coming in to work together. In those cases, communications can be compromised. Make sure you get a good briefing, know the forecast, and anchor safely and securely.

Tongue River Complex

Fire Behavior And Weather Briefing for July 15th, 2017

Weather

For the latest weather information please reference the fire weather forecast that is prepared daily by the National Weather Service (NWS) office in Billings, MT, by referencing their Fire Weather Zones page on the Internet... www.wrh.noaa.gov/firewx/?wfo=byz The fire zone for this complex is MTZ131. A spot forecast may also be submitted via the following link... www.weather.gov/spot/request Questions concerning the weather, please contact NWS Billings 406-652-2936.

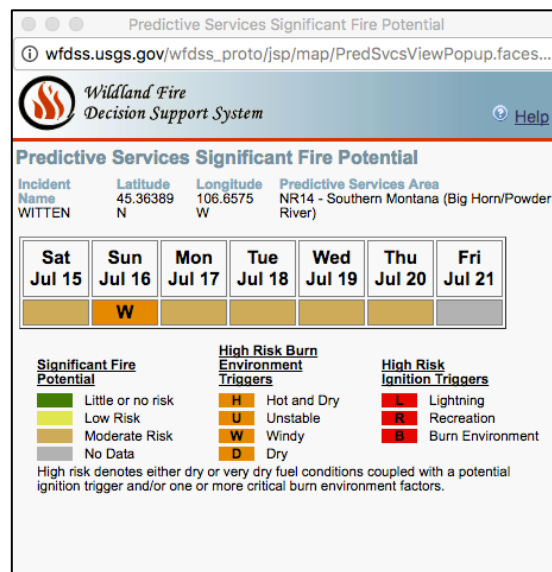
The weather outlook for the next 7 days (July 15 through July 22) is for moderating fire weather conditions. Sunday (July 15) is forecast to be a transition day with a cold frontal passage late in the day associated with thunderstorms and strong wind gusts. Temperatures in the 90s and humidity minimums in the teens are forecast to precede the front... A Watch Out Day! Temperatures are forecast to return to near normal for the remainder of the week with a daily threat for mixed wet and dry thunderstorms. Normal highs are in the upper 80s, and lows in the 60s. Humidity minimums 25%.

7-day Fire Potential Outlook (PSA NR14-Southern Montana)

<http://psgeodata.fs.fed.us/forecast/#/outlooks?state=sideBySide&gacclid=5>

With the extreme heat and low RHs that have occurred over all of North ID and MT this month, ERCs and dead fuel moistures, even 1000 hrs. are and will continue to be at well below normal values for this time of year through the period. ERCs and dead fuel moistures are at record levels (for mid July) in portions of 14/16. Live fuel moistures will still be well below average there as well.

Hot dry conditions that have returned with very low RHs all areas except eastern ND will return enhanced fire potential today through Sunday. Dry storm potential returning late today and peaking [Sunday] with strong gusty outflow winds will increase IA demands in North ID and Western/Central MT, and enhance large fire growth.



Local evening, and even overnight, winds encourage some of the most significant fire behavior to occur late in or after the typical burn period. Grasses average probably 80% cured (HFM 50-60%). Shrubs about 100%.

Fuels and Fire Behavior

Heavy fuels under pine and juniper (FM 2) remain the greatest hazard to suppression action and control operations, with intense burning, torching and spotting behavior causing problems in very dry fuels, especially where fire gets some wind on it

Bottoms and flats with grass and shrubs (GS 2) are curing rapidly, they burn to black and are supporting successful burnout operations. Where sage and stringers of trees are mixed in, anticipate spotting across lines with stronger winds, especially late in the burn period.

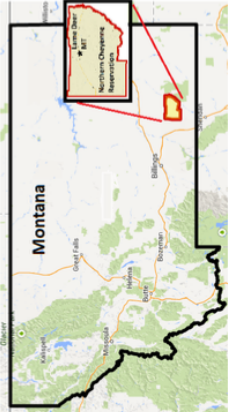
Northern Cheyenne Pocket Card

https://famit.nwcg.gov/sites/default/files/2013_MTNCA_PocketCard.pdf

Pocket Card Thresholds: Temps above 90, RH below 25, Poor overnight humidity recover (<35%), Fine Fuel Moisture 5%, Windspeed 20mph at 20ft (8mph at eye level).

Fire Danger Area:

- Northern Cheyenne Reservation
- NWS Fire Wx Zone: BYZ 131
- WX Sta.: NC SIG* (243902-Badger Pk, 245105-Wolf Min, 245201-F: Howes)
 - * Meets NWCG wx station sids



Fire Danger Interpretation:

Extreme - Use extreme caution
(Caution) - Watch for change
Moderate - Lower potential (but always be aware)

Maximum daily BI and ERC for 1998-2012 (15 fire seasons; 2728 days with wx obs)
 Average - Shows typical fire season's BI and ERC values over that period
 - - - 97th percentile - Only 3% of the 2728 days from 1998-2012 had BI >52 or ERC >80

Remember what Fire Danger tells you:

- ☑ Burning Index shows day-to-day fluctuations calculated from: daily temp, RH, & wind; 24-hr temp & RH ranges, and precip duration. BI relates to expected flame length (BI/10=Ft).
- ☑ Energy Release Component shows seasonal trends calculated from: daily temp & RH; 24-hr temp & RH ranges, and precip duration. Wind is NOT a input.
- ☑ The PocketCard represents conditions over a large area. Anticipate differences based on your site's specific fuels, weather, and topography.
- ☑ Pay particular attention to WIND (forecasted and your current obs), it's the fire behavior factor that changes most (speed, direction, gusts/fronts).

ERC-G Northern Cheyenne (MTNCA)

Fuel Model: G - Short Needle Pine (Heavy Dead) (1978 NFDRS)

BI-C Northern Cheyenne (MTNCA)

Fuel Model: C - Pine-Grass Savanna (1978 NFDRS)

Local Thresholds - Watch out:

These factors are known to significantly increase fire behavior:

- Temperature over 90°F
- 1-Hour Fuel Moisture under 5%
- Daytime RH less than 25%
- Poor overnight RH recovery (<35%)
- 20' windspeed over 20 mph (equates to eye-level winds over 8 mph)

Notable Fires and Years to Remember:

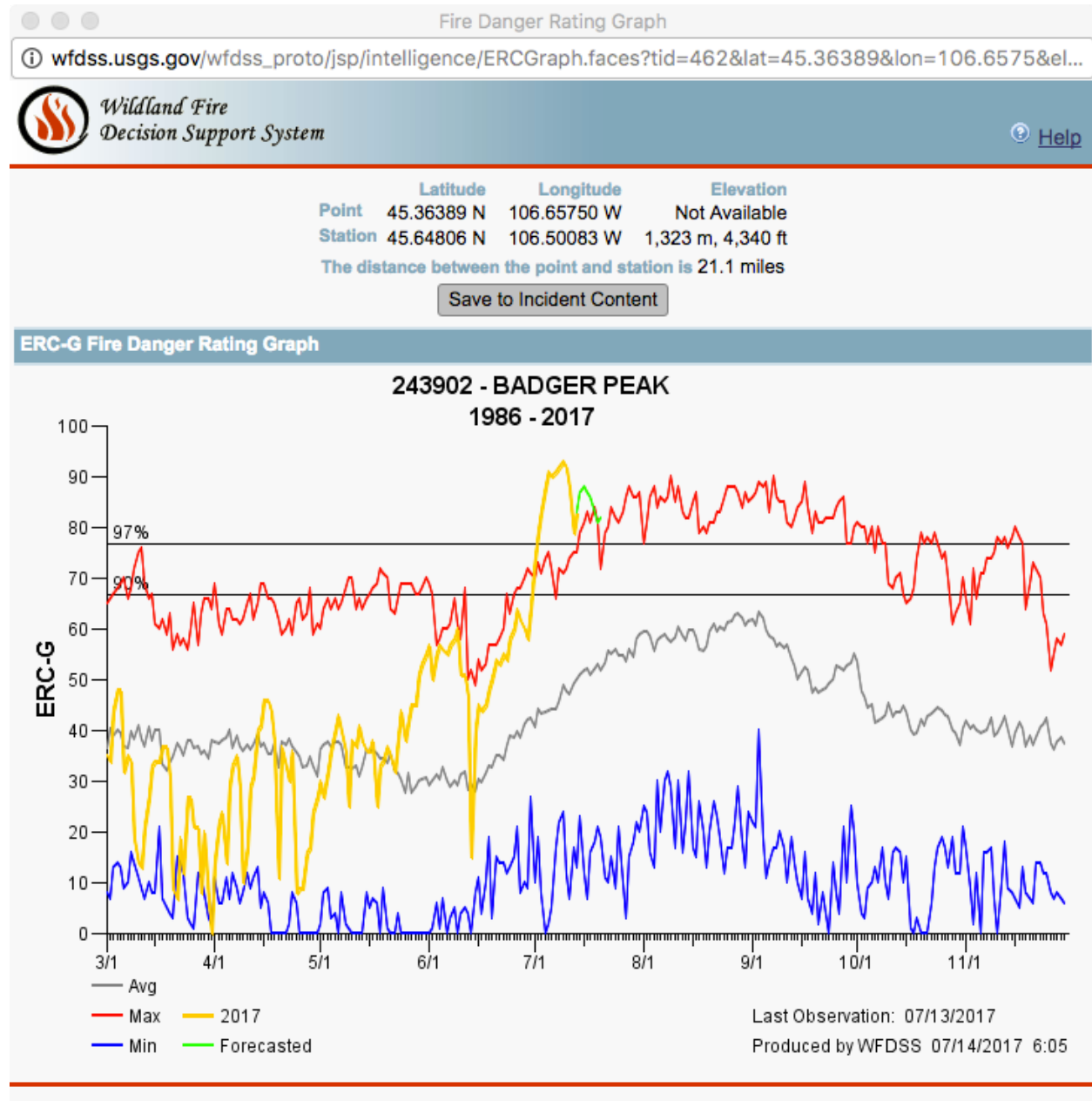
Ash Creek Fire (started 6/25/12, 250k total ac) - Rapid rates of spread and large fire growth.
 6/26: ERC-G=60, BI-C=59*, 6/29: ERC-G=67*, BI-C=50, 7/1: ERC-G=70*, BI-C=54*.
 Temps > 90°F (max. 108°); sustained winds 8-20 mph (gusts to 45); min. RH 5%.
 Burned 110k ac. in the first 3 burning periods, with sustained crown fire in juniper & pine.
 On 7/1, frontal passage winds of 35-45 mph resulted in fire advancing 7 mi. over 7 hrs.
Craig2 Fire (started 8/14/03†, 9180 total ac) - Aggressive nighttime fire behavior.
 8/15: ERC-G=82*, BI-C=55*.
 Burned actively all night (8/14-15) due to poor overnight RH recovery (nighttime RH <35%).
Little Hawk (started 8/12/03†, 25k total ac) - Extreme fire behavior and resistant to control.
 8/12: ERC-G=82*, BI-C=43. Jumped several dozer & retardant lines; 9 ft flame lengths in heavy fuels
Water Hole (started 8/22/11†, 19k ac) - Large size even tho BI & ERC were below 97th percentile.
 8/22: ERC-G=64, BI-C=44. Poor RH recovery, 30° temp, & gusty winds caused aggressive fire spread
Eagle Creek Fire (started 9/22/12, 4150 total ac) - Late season fire that grew large.
 9/23: ERC-G=81*, BI-C=53. 2012 - Dry year, ERC increased to record-high levels in Aug & Sept.
 * Denotes record high ERC or BI values for those dates, for the 15-year period observed
 † Multiple Fire Days: 12 fires started between 8/11-14/03; 8 fires started on 8/22/11

FF-4.1 build 1622, 09/26/2013, MTNCA_PocketCard_2013.mxb, MTNCA-PocketCard-2013.xlsx, MTNCA-PocketCard-2013.jpg
 Responsible Agency: BIA - Northern Cheyenne Agency
 Based on design by NWCG Fire Danger Working Team

Current ERC Trends for the Area (Badger Peak)

ERC Observations for 2017 and Forecast as of July 14th

- Temperature and humidity conditions began to dry fuels in late may, with only a wetting rain event in middle June to interrupt the drying trend.
- ERC levels began setting new daily records by July 1 and setting all time records by the time the fire started on July 7th.
- Moderation on July 11 and 12 did not force values below the 97th percentile, suggesting that weather and fuel moisture conditions remain receptive to significant fire activity.
- Forecast suggests that levels should remain above the 97th percentile for the next week.



ASSIGNMENT LIST		1. Branch	2. Division/Group				
3. Incident Name		4. Operational Period					
Tongue River Complex		Date: Day Shift 7/16/2017			Time: 0600 – 2000		
5. Operations Personnel							
Operations Chief	Adam Wolf, Travis Limpy Dep. OSC 406-740-0103		Division/Group Supervisor	Grant Steelman			
Branch Director			Air Support Group Supervisor				
6. Resources Assigned This Period							
Strike Team/Task Force/ Resource Designator	Last Shift	Leader	No. Pers.	Trans. Needed	Drop Off PT./Time	Pick Up PT./Time	
E-96 ENG 4 TH Logging	7/24	Virgil Madplume	3	N	NC firebase 0700	NC firebase 1900	
E-70 ENG 4 Rocky Mt. Fire	7/22	Keith Creveling	3	N	NC firebase 0700	NC firebase 1900	
ENG 6 Little Dog				N	NC firebase 0700	NC firebase 1900	
ENG 6 Corvallis				N	NC firebase 0700	NC firebase 1900	
ENG 6 Rim Fire				N	NC firebase 0700	NC firebase 1900	
E-121 GRD NCRM	7/23	Marvin Woodenleg O-17	2	N	NC firebase 0700	NC firebase 1900	
E-129 GRD NCRM	7/23	Garrett Fisher O-16	2	N	NC firebase 0700	NC firebase 1900	
E-128 DOZ2 NCRM	7/23	Gene Small O-19	1	N	NC firebase 0700	NC firebase 1900	
O-42 TFLD	7/24	Grant Steelman	1	N	NC firebase 0700	NC firebase 1900	
7. Control Operations							
Patrol and mop up. Start from east break to west break on three chains along north fire perimeter.							
8. Special Instructions							
Be aware of smoldering coal seam hazards. See the attached Northern Region Coal Seam Fires Safety Alert.							
Maintain LCES. Police trash to mitigate bears.							
Logging operations will continue in Saint John's timber sale.							
9. Division/Group Communication Summary							
Function	Frequency - RX	Frequency - TX	Tone	Channel	Comments		
Command RPT							
Tactical DIV A							
A/G Primary							
A/G Secondary							
Prepared by	Approved by Adam Wolf		Date 07/15/2017		Time 2000		

ASSIGNMENT LIST			1. Branch		2. Division/Group		
					SOUTH		
3. Incident Name Tongue River Complex			4. Operational Period Date: Day Shift 7/16/2017				Time: 0600 – 2000
5. Operations Personnel							
Operations Chief	Mitch Bloxham 406-853-3624		Division/Group Supervisor	Mitch Bloxham			
Branch Director			Air Support Group Supervisor				
6. Resources Assigned This Period							
Strike Team/Task Force/ Resource Designator	Last Shift	Leader	No. Pers.	Trans. Needed	Drop Off PT./Time	Pick Up PT./Time	
C-8 T2IA MNICS #1 w/ ENG6	7/21	Bill Alleman	20	N	0830 Tip of the Southern Perimeter	DIV Spike Camp	
7. Control Operations							
Patrol fire perimeter and look for hot spots along the dozer and grader improvement lines.							
8. Special Instructions							
Be aware of smoldering coal seams hazards. See attached Northern Region Coal Seams Safety Alert.							
Maintain LCES. Police trash to mitigate bears.							
9. Division/Group Communication Summary							
Function	Frequency - RX	Frequency - TX	Tone	Channel	Comments		
Command RPT							
Tactical DIV A							
A/G Primary							
A/G Secondary							
Prepared by		Approved by Mitch Bloxham		Date 07/15/2017		Time 2000	

Communications

Communications will be established with the local unit.

North Ops.

Contact Travis Limpy at 406-740-0102

South Ops

Contact Mitch Bloxham at 406-853-3624

MEDICAL PLAN (ICS 206 WF)

Incident/Project Name		1. Operational Period						
Tongue River Complex		0600-2000		07/16/2017				
2. Ambulance Services								
Name	Complete Address	Phone & EMS Frequency		Advanced Life Support (ALS) Yes No				
Northern Cheyenne Ambulance	22 N Cheyenne Ave, Lame Deer, MT	406-477-6774 command channel.		YES				
3. Air Ambulance Services								
Name	Phone	Type of Aircraft & Capability						
St. Vincent's Helflight Billings, MT	800-538-4357	EC-135 35-45 minutes to Witten once lifted						
Lifeflight, Casper, WY	800-806-9158	Bell 407 75 minutes to Witten once lifted						
Two Bear Aviation Glacier Int Airport	Flathead County/406-758-5585	Bell 429 Night Vision, Rescue Hoist, Freq Tan 155.340 Tx/Tone 156.7						
4. Hospitals								
Name Complete Address	GPS Datum – WGS 84 Degrees Decimal Minutes DD° MM.MMM' N - Lat DD° MM.MMM' W - Long		Travel Time Air Gnd		Phone	Helipad Yes No		Level of Care Facility
	Lat:							
Bighorn County Memorial Hospital 17 N Miles Ave, Hardin, MT	Long:		30 min	60 min	406-665-2310	<input checked="" type="checkbox"/>	<input type="checkbox"/>	Critical Access Facility
	VHF:							
	Lat:		45 min	145 min from ICP	406-237-7000	<input checked="" type="checkbox"/>	<input type="checkbox"/>	
Long:								
VHF:								
	Lat:					<input type="checkbox"/>	<input type="checkbox"/>	
	Long:	-						
	VHF:							
	Lat:					<input type="checkbox"/>	<input type="checkbox"/>	
	Long:							
	VHF:							
5. Division Branch Group			Area Location Capability					
			EMS Responders & Capability:					
			Equipment Available on Scene:					
			Medical Emergency Channel:					
			ETA for Ambulance to Scene:					
			Air:					
			Ground:					
			Equipment Available on Scene:					
			Medical Emergency Channel:					
			ETA for Ambulance to Scene:					
			Ground:					

MEDICAL PLAN (ICS 206 WF)

Medical Incident Report

FOR ALL MEDICAL EMERGENCIES: IDENTIFY ON SCENE INCIDENT COMMANDER BY NAME AND POSITION AND ANNOUNCE "MEDICAL EMERGENCY" TO INITIATE RESPONSE FROM IMT COMMUNICATIONS/DISPATCH.

Use items one through nine to communicate situation to communications/dispatch.

1. CONTACT COMMUNICATIONS/DISPATCH

Ex: "Communications, Div. Alpha. Stand-by for Priority Medical Incident Report." (If life threatening request designated frequency be cleared for emergency traffic.)

2. INCIDENT STATUS: Provide incident summary and command structure.

Nature of Injury/Illness		<i>Describe the injury (Ex: Broken leg with bleeding)</i>
Incident Name		<i>Geographic Name + "Medical" (Ex: Trout Meadow Medical)</i>
Incident Commander		<i>Name of IC</i>
Patient Care		<i>Name of Care Provider (Ex: EMT Smith)</i>

3. INITIAL PATIENT ASSESSMENT: Complete this section for each patient. This is only a brief, initial assessment. Provide additional patient info after completing this 9 Line Report.

Number of Patients:	Male / Female	Age:	Weight:
Conscious? <input type="checkbox"/> YES <input type="checkbox"/> NO = MEDEVAC!			
Breathing? <input type="checkbox"/> YES <input type="checkbox"/> NO = MEDEVAC!			
Mechanism of Injury: <i>What caused the injury?</i>			
Lat/Long (Datum WGS84) <i>Ex: N 40° 42.45' x W 123° 03.24'</i>			

4. SEVERITY OF EMERGENCY, TRANSPORT PRIORITY

SEVERITY	TRANSPORT PRIORITY
<input type="checkbox"/> URGENT-RED Life threatening injury or illness. <i>Ex: Unconscious, difficulty breathing, bleeding severely, 2° – 3° burns more than 4 palm sizes, heat stroke, disoriented.</i>	Ambulance or MEDEVAC helicopter. Evacuation need is IMMEDIATE.
<input type="checkbox"/> PRIORITY-YELLOW Serious Injury or illness. <i>Ex: Significant trauma, not able to walk, 2° – 3° burns not more than 1-2 palm sizes.</i>	Ambulance or consider air transport if at remote location. Evacuation may be DELAYED.
<input type="checkbox"/> ROUTINE-GREEN Not a life threatening injury or illness. <i>Ex: Sprains, strains, minor heat-related illness.</i>	Non-Emergency. Evacuation considered Routine of Convenience.

5. TRANSPORT PLAN:

Air Transport: (Agency Aircraft Preferred)

<input type="checkbox"/> Helispot	<input type="checkbox"/> Short-haul/Hoist	<input type="checkbox"/> Life Flight	<input type="checkbox"/> Other
-----------------------------------	---	--------------------------------------	--------------------------------

Ground Transport:

<input type="checkbox"/> Self-Extract	<input type="checkbox"/> Carry-Out	<input type="checkbox"/> Ambulance	<input type="checkbox"/> Other
---------------------------------------	------------------------------------	------------------------------------	--------------------------------

6. ADDITIONAL RESOURCE/EQUIPMENT NEEDS:

<input type="checkbox"/> Paramedic/EMT(s)	<input type="checkbox"/> Crew(s)	<input type="checkbox"/> SKED/Backboard/C-Collar
<input type="checkbox"/> Burn Sheet(s)	<input type="checkbox"/> Oxygen	<input type="checkbox"/> Trauma Bag
<input type="checkbox"/> Medication(s)	<input type="checkbox"/> IV/Fluid(s)	<input type="checkbox"/> Cardiac Monitor/AED
<input type="checkbox"/> Other (i.e. splints, rope rescue, wheeled litter)		

7. COMMUNICATIONS:

Function	Channel Name/Number	Receive (Rx)	Tone/NAC *	Transmit (Tx)	Tone/NAC *
<i>Ex: Command</i>	<i>Forest Rpt, Ch. 2</i>	<i>168.3250</i>	<i>110.9</i>	<i>171.4325</i>	<i>110.9</i>
COMMAND					
AIR-TO-GRND					
TACTICAL					

*(NAC for digital radio system)

8. EVACUATION LOCATION:

Lat/Long (Datum WGS84) <i>EX: N 40 42.45' x W 123 03.24'</i>	
Patient's ETA to Evacuation Location:	
Helispot/Extraction Size and Hazards:	

9. CONTINGENCY: Considerations: If primary options fail, what actions can be implemented in conjunction with primary evacuation method? Be thinking ahead

9. CONTINGENCY:

REMEMBER: Confirm ETA's of resources ordered. Act according to your level of training
Be Alert. Keep Calm. Think Clearly. Act Decisively.

**IAP
MAP**
**TONGUE RIVER
COMPLEX**
LEE CREEK FIRE
MT-MCD-000163

JULY 16, 2017

4,008 ACRES

COMPLETED LINE

ANDROID INSTRUCTIONS
open PDF Maps, click on + at bottom right to add map, then click the orange download button, click on mini QR code icon at top right of screen to access camera, scan code, click on desired daily folder to access maps, click on desired map to download



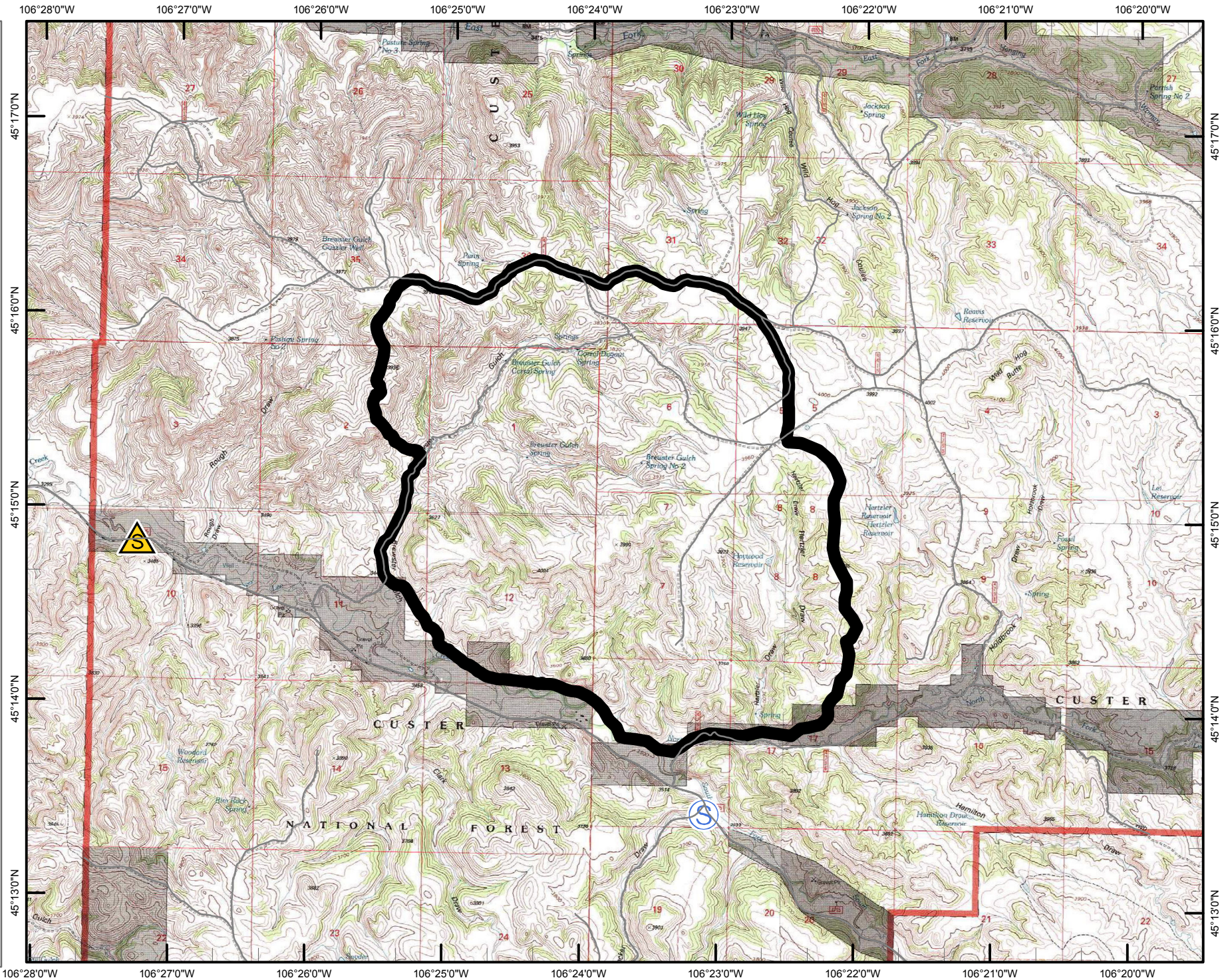
IPHONE INSTRUCTIONS
open PDF Maps, click on + at bottom right of screen to access camera, scan code, click on desired daily folder to access maps, click on desired map to download



NAD 1983
0 0.25 0.5
MILES



Created by Clint Roberts 7/15/2017 6:03:29 PM



IAP MAP

TONGUE RIVER COMPLEX

WITTEN FIRE

MT-MCD-000163

JULY 16, 2017

28,957 ACRES

- DROP POINT
- () DIVISION BREAK
- COMPLETED LINE

ANDROID INSTRUCTIONS
open PDF Maps, click on + at bottom right to add map, then click the orange download button, click on mini QR code icon at top right of screen to access camera, scan code, click on desired daily folder to access maps, click on desired map to download



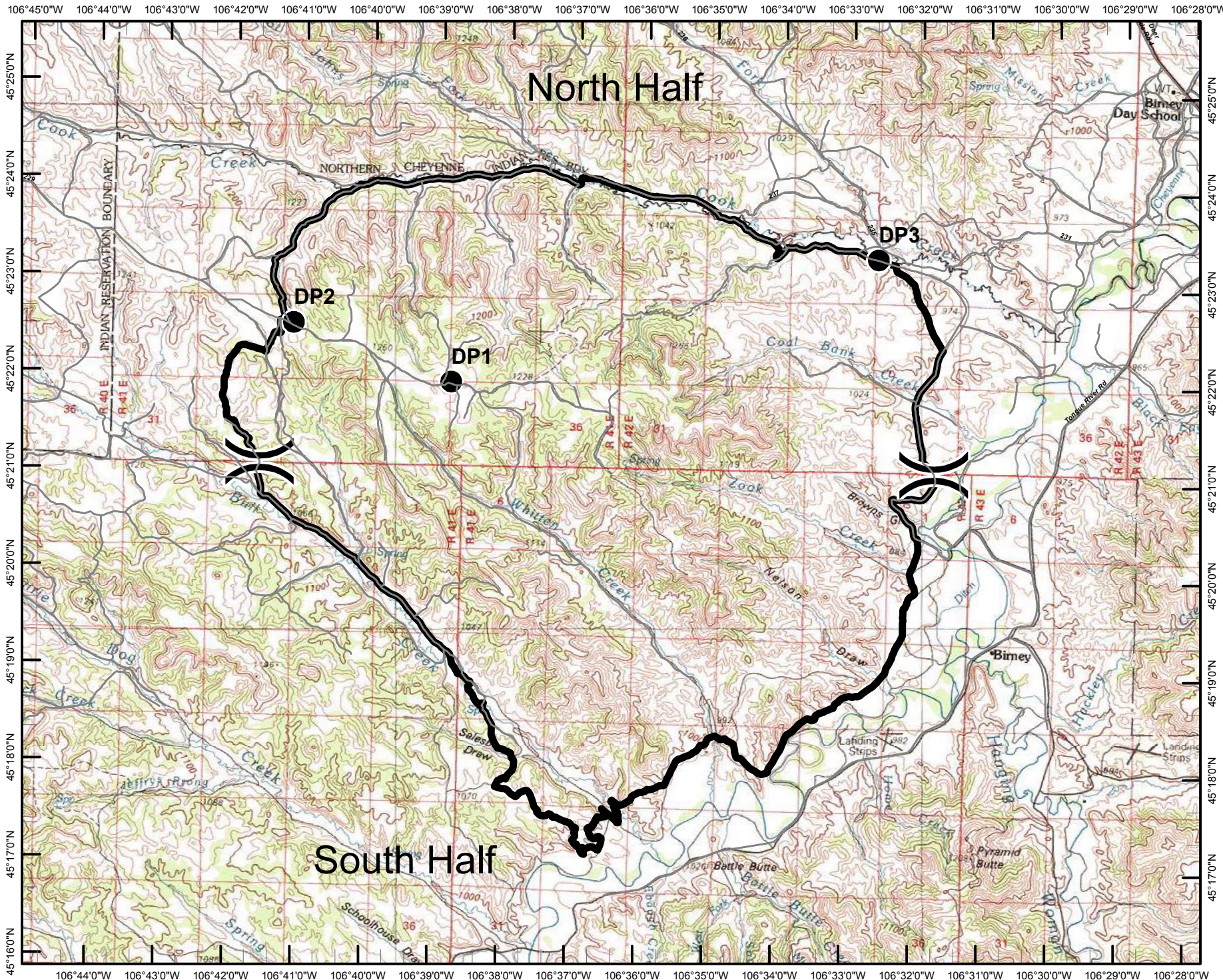
IPHONE INSTRUCTIONS
open PDF Maps, click on + to add map, click on mini QR code icon at top right of screen to access camera, scan code, click on desired daily folder to access maps, click on desired map to download



NAD 1983



Created by Clint Roberts 7/15/2017 6:06:48 PM



UNIT LOG		1. Incident Name	2. Date Prepared	3. Time Prepared
4. Unit Name/Designators		5. Unit Leader (Name and Position)		6. Operational Period
7.		Personnel Roster Assigned		
Name		ICS Position		Home Base
8.		Activity Log		
Time	Major Events			
9. Prepared by (Name and Position)				