

West Fork and Moose Peak Fires

Incident Action Plan

Day	09/06/17	0700 - 1900
Night	9/06-07/17	1900 - 0700



Rocky Mountain IMT - Blue

Jay Esperance, Incident Commander

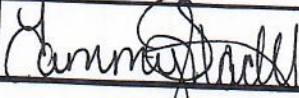
West Fork
MT-KNF-000222
P1LBH6 (0114)

Moose Peak
MT-KNF-000225

INCIDENT OBJECTIVES (ICS 202)

Incident Name:		Operational Period:	Day / Night
West Fork and Moose Peak Fires		Date: 9/06-07/17	Time: 0700 - 0700
Objectives:			
<p>Public and firefighter safety is always recognized as the first priority for all fire management activities. The Ten Standard Fire Orders and the Eighteen Watch-Out Situations will be continually evaluated and mitigated before any action is undertaken.</p> <p>Aggressive initial attack will be provided with the safety of firefighters and the public being the primary concern.</p> <p>Maintain and enhance relationships with all cooperators, stakeholders, and private landowners.</p>			
West Fork Objectives			
<p>Protect private property, infrastructure, and corporate lands within close proximity to the fire area to avoid property damage and/or loss or timber values.</p> <p>Use a combination of aerial and ground resources and natural barriers to keep the fire north of the Kootenai River and west of the 508 Road in order to reduce threats to Libby and outlying areas.</p> <p>Protect critical infrastructure including, but not limited to bridges, Turner Mt. Ski Area, Loon Lake / Timber Lane Campgrounds, and area trailheads to avoid loss or damage to these values.</p> <p>Protect Bull trout habitat by following fire retardant avoidance guidelines and reducing fire intensity within drainages to avoid shade reduction that can lead to water temperature increases.</p> <p>Interagency coordination and cooperation will continue to evaluate and manage risks associated with the Rainy Creek area and Libby amphibole asbestos exposure. No incident personnel will enter this area.</p>			
Moose Peak Objectives			
<p>Identify strategies that support tactical options that balance safety with the highest probability of success to reduce the risk of fire spreading into the urban interface. Consider initiating Point/Zone protection actions if the fire spreads east towards the urban interface to minimize loss from fire damage.</p> <p>Suppression strategies and tactics should consider expected weather, natural fuel breaks, fire behavior, and the ability to extract personnel in the event of an injury, as well as zone and point protection tactics.</p> <p>Provide protection to threatened private and public values including:</p> <ul style="list-style-type: none"> • Private lands and residences • Commercial timber fiber production lands • Cultural and historic sites • Recreation infrastructure • Roadway infrastructure • Threatened and endangered species habitat 			
Operational Period Command Emphasis:			
<p>Leader's Intent:</p> <p>Don't outdrive your headlights.</p>			
Site Safety Plan Required? Yes: <input type="checkbox"/> No: <input checked="" type="checkbox"/>			
Approved site safety plans located at:			
Incident Action Plan Components:			
ICS 203	<input checked="" type="checkbox"/>	ICS 207	Fire Behavior <input checked="" type="checkbox"/>
ICS 204	<input checked="" type="checkbox"/>	ICS 208	Safety Message <input checked="" type="checkbox"/>
ICS 205	<input checked="" type="checkbox"/>	ICS 220	<input checked="" type="checkbox"/> ICS 214 <input checked="" type="checkbox"/>
ICS 205A		Map	<input checked="" type="checkbox"/>
ICS 206	<input checked="" type="checkbox"/>	Weather	<input checked="" type="checkbox"/>
Prepared by: Bill Waln	Position: PSC2	Signature: <i>Bill Waln</i>	
Approved by Incident Commander: Jay T. Esperance		Signature: <i>Jay T. Esperance</i>	
		Date/Time: 9/5/2017	2000

ORGANIZATIONAL ASSIGNMENT LIST (ICS 203)

Incident Name: West Fork and Moose Peak Fires		Operational Period: Day / Night Date: 9/06-07/17 Time: 0700 - 0700	
Incident Commander(s) and Command Staff:		Logistics Section:	
Incident Commander	Jay Esperance	Chief	Herb Brockett / Dan McCormick
Safety Officer	Brian Ayers	Communications Unit	Roger Willey
Medical Unit	Wayne Hare	Food Unit	Rob Brady
Information Officer	Jeni Lawver	Ground Support Unit	Monty Bollock
Deputy	Michelle Ehn-Kelly / Shawna Hartman	Supply Unit	John Devine
Liaison Officer	Gregg Smith	Information Technology Specialist	Bob Ermish / David Kirkham
Agency Administrators:		Operations Section:	
Agency/Organization	Name	Field Operations	Travis Lipp
Forest Supervisor	Chris Savage	Planning Operations	Colby Crawford / Joe Sean Kennedy (T)
Agency Representatives:		Night Operations	Dick Terry
Agency/Organization	Name	Branch I - West Fork	Clark Hammond
Libby District Ranger	Nathan Gassman	Division A	Tiddle Camino
Libby District FMO	Jason Cress	Division F	Deon Steinle / Tyler Chesarek (T)
Kootenai Fire Staff	Dan Rose	Division M	Shay Rogge / Jered Gilmore (T)
Forest Support	Quinn Carver	Night	
Lincoln S.O.	Brandon Huff	Branch II - Moose Peak	Rob Powell
DNRC	Dave Marsh	Division N	Aaron Ortega
EPA	Christina Progress	Division T / Z	Chris Zoller / Josh Morgan (T)
		Structure Defense Group	Joe Tjaden / Don Henry (T)
Planning Section:		Air Operations Branch	
Chief	Bill Wain	Air Ops Branch Dir.	Warren Giacomini
Deputy	Dylan Rader	Air Attack Supervisor	Gordon Grosslight
Resources Unit	Tammy Stadel / Stan Mitchem	Air Support Supervisor	Jane Lopez
Documentation Unit	Cathy Junglen	Finance/Administration Section:	
Situation Unit	Terry Chaplin	Chief	Brenda Even / Serena Wicka (T)
GIS Specialist	Jessica Jelacic	Time Unit	Barbara Harris
Incident Meteorologist	Darren Clabo	Cost Unit	Ron Duvall / Chelsea Monks
Fire Behavior	Ben Pratt (T)	Comp Claims	Eric Gregory
Resource Advisor	Kelly Mott-Lacroix / Ed Coates / Julie Hopkinson		
Prepared by:	Tammy Stadel	Signature:	
Position / Title:	RESL		
Date / Time:	09/05/2017 / 2200		

Incident Weather Forecast

INCIDENT: West Fork Wildfire

PREPARED BY: Darren Clabo IMET

FORECAST: # 2

VALID: 6 September 2017 Day Operational Period

DATE/TIME ISSUED: Tuesday 5 September 2017 2000 MDT

WEATHER DISCUSSION:

We'll see mostly clear skies again today as a high pressure system builds into the Northern Great Plains and Northern Rockies. With significant fire activity in the region, smoke will still plague the fire area reducing visibilities. Instability will increase from yesterday bringing higher mixing heights but the dense smoke will likely still inhibit overall vertical mixing. Winds will remain light and out of the east at the ridgetops but winds at the mid to lower elevations will have upslope and upvalley components—watch your aspect to determine local wind direction. High temperatures will be warmer and minimum humidity will be lower than yesterday.

WEATHER FORECAST:

Wednesday

Sky Weather: Mostly clear to partly cloudy. Smoke.

Temperature: Ridge: Max 75 F

Valley: Max 85 F

Humidity: Ridge: Min 20%

Valley: Min 12%

20 ft Winds: Ridge: NE @ 5-10 mph

Valley: Variable/terrain driven

Transport Wind: N @ 10 mph

Haines: 4

CWR: 0%

LAL: 1

Mixing Height: Increasing to 6,000 ft AGL.

Inversion: Inversion to break around 1200 hrs.

Wednesday Night

Sky Weather: Mostly clear. Smoke.

Temperature: Ridge: Min 58 F

Valley: Min 48 F

Humidity: Ridge: Max 45%

Valley: Max 75%

20 ft Winds: Ridge: NE @ 5 mph

Valley: Downslope/downvalley

Transport Wind: NE @ 5 mph

CWR: 0%

LAL: 1

Inversion: Strong thermal belt expected mid-slope.

EXTENDED FORECAST:

Thursday will bring the most unstable conditions of the week. This will increase the mixing heights and potentially allow for some smoke to clear the area. Thursday will also be the warmest and driest day of the week with high temperatures from 80-90 F and minimum humidity from 10-20%. Weak monsoonal moisture will then return to the area on Friday bringing a slight chance of a brief shower or thunderstorm; however, wetting rains are unlikely. Temperatures on Friday will be in the upper 60s to mid-70s while minimum humidity will range from 25-35% (or higher). The thermal belts will remain strong during the overnight hours. Strong westerly winds can be expected on Saturday.

SAFETY:

Watch Out #4: Many of us are still new to this area and are unfamiliar with the weather and local factors influencing the fire behavior.



Darren Clabo IMET

5 September 2017

Date

FIRE BEHAVIOR FORECAST

FORECAST NUMBER: #2	TYPE OF FIRE: Wildfire
FIRE NAME: West Fork	OPERATIONAL PERIOD:
DATE ISSUED: Tuesday 5 September 2017	TIME ISSUED: 2000MDT
Valid: 6 September 2017 Day Operational Period	SIGNED: <i>Ben Pratt</i>
	Typed/printed: Ben Pratt, FBAN trainee

INPUTS

WEATHER SUMMARY: Smokey conditions. Temperatures 75-85. RH's 12-20%. Ridgetop winds NE @ 5-10 mph and variable/ terrain driven in the valleys.

FIRE BEHAVIOR

OUTPUTS

GENERAL:

Regional drought and extremely low fuel moistures contributed to very high fire behavior on both the West Fork and Moose Creek fires this weekend. Yesterday's smoke and inversion has limited fire behavior and moderated spread. Expect a similar behavior today as the atmosphere is expected to be only slightly less stable.

SPECIFIC:

Fires behavior will be moderate to limited while influenced by smoke and inversion, especially where terrain and local winds are not in alignment. The potential for a dramatic increase in fire behavior exists should the air clear out and fuels get exposed to wind and sunshine.

AIR OPERATIONS:

Visibility may be limited for much of the day due to smoke.

SAFETY

Look up, Look Down, Look Around

Pay particular attention to the following:

- Surface winds above 10 mph
- Battling or shifting winds.
 - High Haines Index
- Well Developed Column
 - Trees Torching
- Frequent spot fires.

Division/Group Assignment List (ICS 204 WF)

Incident Name: West Fork and Moose Peak Fires		Branch: I	Division: A
Operational Period:			
Date: 9/6/2017	Day Time: 0700 - 1900		

Operations Personnel			
Field Operations	Travis Lipp	Branch Director	Clark Hammond
Planning Operations	Colby Crawford / Joe Sean Kennedy (T)	Division/Group Supervisor	Tiddle Camino
Safety Officer	Brian Ayers	Air Attack Supervisor	Gordon Grosslight

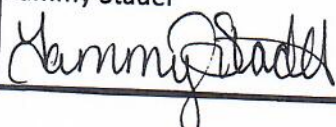
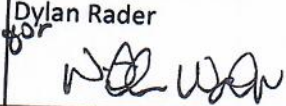
Resources Assigned this Period					
<u>Strike Team / Task Force / Resource Designator</u>	<u>LWD</u>	<u>Leader</u>	<u>Number Persons</u>	<u>Drop Off Pt / Time</u>	<u>Pick Up Pt / Time</u>

Control Operations / Work Assignments:
 TASK: Construct direct and indirect fireline.
 PURPOSE: Keep fire from impacting values at risk.
 END STATE: Fireline in the correct location with the right dimensions to contain the fire.

TASK: Scout potential fireline locations.
 PURPOSE: Identify appropriate line for control operations.
 END STATE: Fireline in the correct location with the right dimensions to contain the fire.

Special Instructions:
 SOF2 Miller will be shared between divisions
 IA response will be identified by Field Operations.
 Delimiting must occur before logs are hauled.
 Identify medical personnel and have them coordinate with the MEDL.

Division / Group Communications Summary						
Function	Channel	RX Freq N/W	RX Tone/NAC	TX Freq N/W	TX Tone/NAC	Mode
Tactical	1	168.5000	162.2	168.5000	162.2	A
Command	7	168.7000	162.2	170.9750	162.2	A
A / G	14	169.1500		169.1500		A

Prepared By (Resource Unit Leader) Tammy Stadel 	Approved By (PSC) Dylan Rader 	Date 9/5/2017	Time 2000
--	--	-------------------------	---------------------

Division/Group Assignment List (ICS 204 WF)

Incident Name: West Fork and Moose Peak Fires		Branch: I	Division: F
Operational Period: DAY		I	F
Date: 9/6/2017	Time: 0700 - 1900		

Operations Personnel			
Field Operations	Travis Lipp	Branch Director	Clark Hammond
Planning Operations	Colby Crawford / Joe Sean Kennedy (T)	Division/Group Supervisor	Deon Steinle / Tyler Chesarek (T)
Safety Officer	Brian Ayers	Air Attack Supervisor	Gordon Grosslight


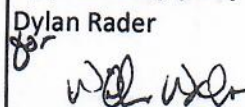
Resources Assigned this Period					
<u>Strike Team / Task Force / Resource Designator</u>	<u>LWD</u>	<u>Leader</u>	<u>Number Persons</u>	<u>Drop Off Pt / Time</u>	<u>Pick Up Pt / Time</u>

Control Operations / Work Assignments:
 TASK: Construct direct and indirect fireline.
 PURPOSE: Keep fire from impacting values at risk.
 END STATE: Fireline in the correct location with the right dimensions to contain the fire.

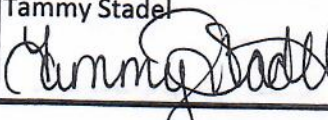
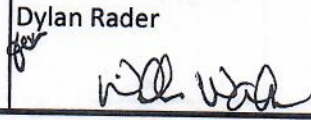
TASK: Scout potential fireline locations.
 PURPOSE: Identify appropriate line for control operations.
 END STATE: Fireline in the correct location with the right dimensions to contain the fire.

Special Instructions:
 SOF2 Miller will be shared between divisions
 IA response will be identified by Field Operations.
 Identify medical personnel and have them coordinate with the MEDL.

Division / Group Communications Summary						
Function	Channel	RX Freq N/W	RX Tone/NAC	TX Freq N/W	TX Tone/NAC	Mode
Tactical	2	168.2000	162.2	168.2000	162.2	A
Command	7	168.7000	162.2	170.9750	162.2	A
A / G	14	169.1500		169.1500		A

Prepared By (Resource Unit Leader) Tammy Stadel 	Approved By (PSC) Dylan Rader 	Date 9/5/2017	Time 2000
--	--	-------------------------	---------------------

Division/Group Assignment List (ICS 204 WF)

Incident Name: West Fork and Moose Peak Fires		Branch:	Division:			
Operational Period:		I	M			
Day	Date: 9/6/2017				Time: 0700 - 1900	
Operations Personnel						
Field Operations	Travis Lipp	Branch Director		Clark Hammond		
Planning Operations	Colby Crawford / Joe Sean Kennedy (T)	Division/Group Supervisor		Shay Rogge / Jered Gilmore (T)		
Safety Officer	Brian Ayers	Air Attack Supervisor		Gordon Grosslight		
Resources Assigned this Period						
<u>Strike Team / Task Force / Resource Designator</u>	<u>LWD</u>	<u>Leader</u>	<u>Number Persons</u>	<u>Drop Off Pt / Time</u>	<u>Pick Up Pt / Time</u>	
Control Operations / Work Assignments:						
TASK: Construct direct and indirect fireline.						
PURPOSE: Keep fire from impacting values at risk.						
END STATE: Fireline in the correct location with the right dimensions to contain the fire.						
TASK: Scout potential fireline locations.						
PURPOSE: Identify appropriate line for control operations.						
END STATE: Fireline in the correct location with the right dimensions to contain the fire.						
Special Instructions:						
SOF2 Miller will be shared between divisions						
IA response will be identified by Field Operations.						
Evacuation notifications made - notify homeowners who refuse to leave prior to conducting burnout operations.						
Identify medical personnel and have them coordinate with the MEDL.						
Division / Group Communications Summary						
Function	Channel	RX Freq N/W	RX Tone/NAC	TX Freq N/W	TX Tone/NAC	Mode
Tactical	3	168.6000	162.2	168.6000	162.2	A
Command	7	168.7000	162.2	170.9750	162.2	A
A / G	14	169.1500		169.1500		A
Prepared By (Resource Unit Leader) Tammy Stadel 		Approved By (PSC) Dylan Rader 		Date 9/5/2017	Time 2000	

Division/Group Assignment List (ICS 204 WF)

Incident Name: West Fork and Moose Peak Fires		Branch: I	Division: Night
Operational Period: Night			
Date: 9/06-07/17	Time: 1900 - 0700		

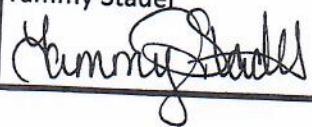
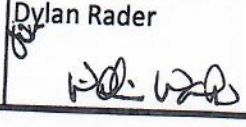
Operations Personnel			
Field Operations	Travis Lipp	Branch Director	Clark Hammond
Planning Operations	Colby Crawford / Joe Sean Kennedy (T)	Division/Group Supervisor	
Safety Officer	Brian Ayers	Air Attack Supervisor	Gordon Grosslight

Resources Assigned this Period					
Strike Team / Task Force / Resource Designator	LWD	Leader	Number Persons	Drop Off Pt / Time	Pick Up Pt / Time
PU MT-KNF					
PU MT-KNF					

Control Operations / Work Assignments:
 TASK: Patrol and monitor.
 PURPOSE: Minimize impact to structures and values at risk.
 END STATE: The fire cannot threaten any values at risk.

Special Instructions:

Division / Group Communications Summary						
Function	Channel	RX Freq N/W	RX Tone/NAC	TX Freq N/W	TX Tone/NAC	Mode
Command	7	168.7000	162.2	170.9750	162.2	A
Command	9	172.2500		164.1250	167.9	A
Command	10	172.2500		164.1250	151.4	A
A / G	14	169.1500		169.1500		A

Prepared By (Resource Unit Leader) Tammy Stadel 	Approved By (PSC) Dylan Rader 	Date 9/5/2017	Time 2000
--	--	-------------------------	---------------------

Division/Group Assignment List (ICS 204 WF)

Incident Name: West Fork and Moose Peak Fires		Branch: II	Division: N
Operational Period:	Day		
Date: 9/6/2017	Time: 0700 - 1900		

Operations Personnel			
Field Operations	Travis Lipp	Branch Director	Rob Powell
Planning Operations	Colby Crawford / Joe Sean Kennedy (T)	Division/Group Supervisor	Aaron Ortega
Safety Officer	Brian Ayers	Air Attack Supervisor	Gordon Grosslight

Control Operations / Work Assignments:

TASK: Scout potential fireline locations.
 PURPOSE: Identify appropriate line for control operations.
 END STATE: Fireline in the correct location with the right dimensions to contain the fire.

TASK: Identify values at risk.
 PURPOSE: Structure protection identified and resources are ordered appropriately.
 END STATE: Structure protection in place.

TASK: Construct indirect fireline from Sylvan Lake to East Fisher Creek.
 PURPOSE: Keep fire south of East Fisher Creek.
 END STATE: Fireline in the correct location with the right dimensions to contain the fire.

Special Instructions:

Nevada IMT3 Team #1 members (Washburn and Fiore) available for structure assessment and scouting.


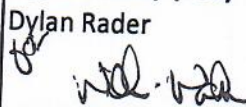
No engagement prior to positive communications with ICP.

SOF2 Dufresne will be shared between divisions

Identify medical personnel and have them coordinate with the MEDL.

Division / Group Communications Summary

Function	Channel	RX Freq N/W	RX Tone/NAC	TX Freq N/W	TX Tone/NAC	Mode
Tactical	4	166.7250	162.2	166.7250	162.2	A
Command	7	168.7000	162.2	170.9750	162:2	A
A / G	14	169.1500		169.1500		A

Prepared By (Resource Unit Leader) Tammy Stadel 	Approved By (PSC) Dylan Rader 	Date 9/5/2017	Time 2000
--	--	-------------------------	---------------------

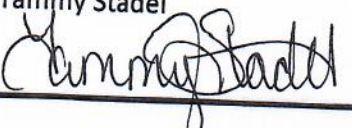
Division/Group Assignment List (ICS 204 WF)

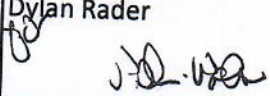
Incident Name: West Fork and Moose Peak Fires			T / Z
Operational Period: Day			
Date: 9/6/2017	Time: 0700 - 1900		

Operations Personnel			
Field Operations	Travis Lipp	Branch Director	Rob Powell
Planning Operations	Colby Crawford / Joe Sean Kennedy (T)	Division/Group Supervisor	Chris Zoller / Josh Morgan (T)
Safety Officer	Brian Ayers	Air Attack Supervisor	Gordon Grosslight

Resources Assigned this Period					
<u>Strike Team / Task Force / Resource Designator</u>	<u>LWD</u>	<u>Leader</u>	<u>Number Persons</u>	<u>Drop Off Pt / Time</u>	<u>Pick Up Pt / Time</u>
SPEC		John Shatsburger	1	Moose Spike / 0700	Moose Spike / 1900
SKD3 Eash Logging E-48		O.J. Eash	2	Moose Spike / 0700	Moose Spike / 1900
Continued on next page					

Division / Group Communications Summary						
Function	Channel	RX Freq N/W	RX Tone/NAC	TX Freq N/W	TX Tone/NAC	Mode
Tactical	5	166.7750	162.2	166.7750	162.2	A
Command	7	168.7000	162.2	170.9750	162.2	A
A / G	14	169.1500		169.1500		A

Prepared By (Resource Unit Leader)
 Tammy Stadel


Approved By (PSC)
 Dylan Rader


Date: 9/5/2017
Time: 2000

Division/Group Assignment List (ICS 204 WF)

Incident Name: West Fork and Moose Peak Fires		Branch: II	Division: T / Z
Operational Period:	Day		
Date: 9/6/2017	Time: 0700 - 1900		

Operations Personnel			
Field Operations	Travis Lipp	Branch Director	Rob Powell
Planning Operations	Colby Crawford / Joe Sean Kennedy (T)	Division/Group Supervisor	Chris Zoller / Josh Morgan (T)
Safety Officer	Brian Ayers	Air Attack Supervisor	Gordon Grosslight

Control Operations / Work Assignments:

TASK: Scout potential fireline locations.
 PURPOSE: Identify appropriate line for control operations.
 END STATE: Fireline in the correct location with the right dimensions to contain the fire.

TASK: Identify values at risk.
 PURPOSE: Structure protection identified and resources are ordered sppropriately.
 END STATE: Structure protection in place.

TASK: Construct indirect fireline from Fish Trap Creek north to McGinnis Meadows.
 PURPOSE: Keep fire south of McGinnis Meadows.
 END STATE: Fireline in the correct location with the right dimensions to contain the fire.

Special Instructions:

Nevada IMT3 Team #1 members (Washburn and Fiore) available for structure assessment and scouting.

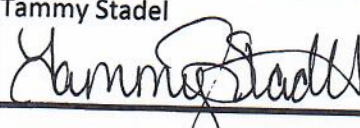
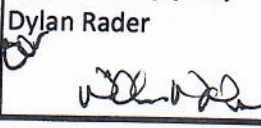
No engagement prior to positive communications with ICP.

SOF2 Dufresne will be shared between divisions

Identify medical personnel and have them coordinate with the MEDL.

Division / Group Communications Summary

Function	Channel	RX Freq N/W	RX Tone/NAC	TX Freq N/W	TX Tone/NAC	Mode
Tactical	5	166.7750	162.2	166.7750	162.2	A
Command	7	168.7000	162.2	170.9750	162.2	A
A / G	14	169.1500		169.1500		A

Prepared By (Resource Unit Leader) Tammy Stadel 	Approved By (PSC) Dylan Rader 	Date 9/5/2017	Time 2000
--	--	-------------------------	---------------------

Division/Group Assignment List (ICS 204 WF)

Incident Name: West Fork and Moose Peak Fires		Branch:	Division:
Operational Period: Date: 9/6/2017			Structure Defense Group
Day	Time: 0700 - 1900		

Operations Personnel			
Field Operations	Travis Lipp	Division / Group Supervisor	Joe Tjaden / Don Henry (T)
Planning Operations	Colby Crawford / Joe Sean Kennedy (T)	Air Attack Supervisor	Gordon Grosslight
Safety Officer	Brian Ayers		

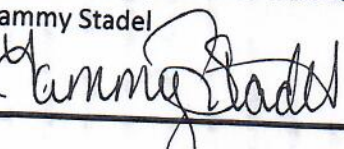
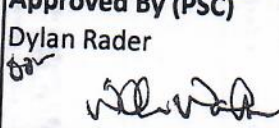
Resources Assigned this Period					
<u>Strike Team / Task Force / Resource Designator</u>	<u>LWD</u>	<u>Leader</u>	<u>Number Persons</u>	<u>Drop Off Pt / Time</u>	<u>Pick Up Pt / Time</u>

Control Operations / Work Assignments:
 TASK: Identify values at risk.
 PURPOSE: Structure protection identified and resources are ordered appropriately.
 END STATE: Structure protection in place.

Special Instructions:
 SOF2 Dufresne will be shared between divisions

 Identify medical personnel and have them coordinate with the MEDL.

Division / Group Communications Summary						
Function	Channel	RX Freq N/W	RX Tone/NAC	TX Freq N/W	TX Tone/NAC	Mode
Command	7	168.7000	162.2	170.9750	162.2	A
A / G	14	169.1500		169.1500		A

Prepared By (Resource Unit Leader) Tammy Stadel 	Approved By (PSC) Dylan Rader 	Date 9/5/2017	Time 2000
--	--	-------------------------	---------------------

AIR OPERATIONS SUMMARY

Prepared By: Warren Giacomini
 Prepared Date/Time: 9/05/2017 1900

1. INCIDENT NAME: West Fork and Moose Creek Fire

2. OPERATIONAL PERIOD DATE: 9/6/2017

START TIME: 800 END TIME: 2000 SUNRISE: 706 SUNSET: 2015 Helibase

3. REMARKS (Safety Notes, Hazards)
 Wednesday, 9-6, Aerial weed spraying operation along power lines East of Raney Creek in the Libby Asbestos Superfund site.

Maintain awareness of local conditions, specifically smoke creating visibility issues and local winds influenced by terrain.

Environmental Bucket Wash-out with Hotsy, located at helibase, required for (1) Any aircraft arriving from East side of Continental Divide (2) Utilizing Cabinet Gorge, Savage Lakes or Noxin Reservoir.

Current air operations are being run out of Libby Helibase. All requests for aircraft must go through Kootenai Dispatch, who will then provide the appropriate kneeboard for designated aircraft.

4. READY ALERT AIRCRAFT
 Incident Medevac Resources:
 TBD

Litter Kit at Libby HB for 357TA
 External Medevac Resources:
 SHORTHAUL Order via Kootenai A/C Desk.
 ** Hoist/NVG: Two Bear Air Civilian
 All medivacs will be coordinated through West Fork/Moose Peak Communications and MEDL. ASGS to notify helibase of possible helicopter use.

Ensure Kootenai A/C desk is notified if helicopter dispatched to medevac.

5. Airspace Information:
 # 7/5625 (West Fork A-47)
 Freq: 123.675
 Radius: POLYGON
 Altitude: 11,000 MSL
 Moose Peak TFR TBD

6. PERSONNEL	NAME	PHONE #	7. FREQUENCIES	AM	VHF-FM
Air Ops Branch Director	Warren Giacomini	707-391-6784	WEST FORK Primary A/G		169.1500
Air Attack/ HLCO	Gordon Grosslight	719-431-1389	WEST FORK Secondary A/G		
Air Support Group Supv	Jane Lopez	970-217-4101	WEST FORK Primary A/A (TFR)	123.6750	
Libby Helibase		406-283-7865	WEST FORK Secondary A/A		
Kootenai Dispatch		406-283-7740			
			MOOSE Primary A/G		TBD
			MOOSE Secondary A/G		TBD
			MOOSE Primary A/A (TFR)	TBD	
			MOOSE Secondary A/A	TBD	
			Deck		163.1000
			National Flight Follow		168.6500 Tx/Rx 110.9
			Air Guard		168.6250 Tx/Rx 110.9

Warren Giacomini
 AORD

8. AERIAL SUPERVISION

REQ #	TY	MAKE/MODEL	BASE	START	AVAIL	PERSONNEL	REMARKS
255	3	Cessna 337	MSO or Libby	730	800	Grosslight	AA/HLCO as needed

8a. REMARKS

Hazard: Flying ATGS/HLCO missions in smoke conditions. Mitigation: ATGS/HLCO makes the call to return to base informing and coordinating with OPS prior to leaving. If on ground due to poor viz, or about to fly a shift, call Helibase and they will check with Line OSC or DIVS.

9. HELICOPTERS

REQ #	TY	MAKE/MODEL	BASE	START	AVAIL	REMARKS	FAA N#	REQ #	TY	MAKE/MODEL	BASE	START	AVAIL	REMARKS
357TA	3	AS-350 B3	Libby	800	830	EU/Recon/ HLCO/Bucket	5BH		1	S-70	Libby	800	830	EU/Bucket
571SC	2	Bell 212 HP	Libby	800	830	EU/Recon/IA/ Rappel	471CH		1	Chinook	Libby	800	830	EU/Tanked
145MA	2	UH1H	Libby	800	830	Restricted/ Bucket/Libby Mine Resource								
40729	2	UH1H	Libby	800	830	CWN/Bucket								
129NH	2	S-58T	Libby			ETA 9/7								

AIR OPERATIONS SPECIAL EQUIPMENT

10. MISSIONS

Type	TIME	From	To
Bucket Support as requested			
Recon as requested			
PSD- As requested			

Manu Porini AOB

Controlled Unclassified Information // Basic

**INCIDENT RADIO COMMUNICATIONS
PLAN I-205**

1. INCIDENT NAME
West Fork Fire

2. DATE/TIME PREPARED
9/5/2017 1900

3. OPERATIONAL PERIOD DATE/TIME
9/6/2017 0600-2000

4. BASIC RADIO CHANNEL UTILIZATION

Ch #	Channel Name	Assignment	RX Frequency	RX Tone / NAC	TX Frequency	TX Tone / NAC	Mode Digital (D) Analog (A) Mixed (M)	Remarks
1	TAC 1	Branch I - Div. A	168.0500	162.2	168.0500	162.2	A	Fireline Tactical
2	TAC 2	Branch I - Div. F	168.2000	162.2	168.2000	162.2	A	Fireline Tactical
3	TAC 3	Branch I - Div. M	168.6000	162.2	168.6000	162.2	A	Fireline Tactical
4	TAC 4	Branch II - Div. N	166.7250	162.2	166.7250	162.2	A	Fireline Tactical
5	TAC 5	Branch II - Div. T / Z	166.7750	162.2	166.7750	162.2	A	Fireline Tactical
6	TAC 6	Not Used	168.2500	162.2	168.2500	162.2	A	Fireline Tactical
7	CMD 7	West Fork	168.7000	162.2	170.9750	162.2	A	Fireline To ICP - Blue Mt.
8	CMD 8	Not Used					A	Not Used
9	CMD 9	Forest Net Blue Mt	172.2500		164.1250	167.9	A	Local - USFS & IA Response
10	CMD 10	Forest Net Allen Mt	172.2500		164.1250	151.4	A	Local - USFS & IA Response
11	RED	State Mutual Aid	154.0700		154.0700	156.7	A	State Mutual Aid
12	TAN	EMS	155.3400		155.3400	156.7	A	Air Ambulance
13	Not Used						A	Not Used
14	A/G West Fork	Operational	169.1500		169.1500		A	Air To Ground West Fork
15	Not Used						A	Not Used
16	AIRGUARD	All Divisions	168.6250		168.6250	110.9	A	Air Emergency Only

Roger Willey - COML

5. I-205 Prepared By

SAFETY MESSAGE: DON'T FORGET - POST LOOKOUTS WHO CAN RELAY MESSAGES OUT OF POOR COVERAGE AREAS.

HEALTH AND SAFETY MESSAGE

SAFETY starts with **YOU**

We are **ALL** accountable for **SAFE** behaviors

INCIDENT: West Fork and Moose Peak Fires

DATE: 9-6-17

TIME: Day

Major Hazards and Risks:

Driving
Communications
Fire Behavior
Fatigue

Fire Order of the Day – *Fight fire aggressively, having provided for safety first.*

Narrative:

Driving-Drive at or below posted speed limit, slow down on rough roads, drive defensively, obey all traffic laws.

Communications-New communications plan for West Fork. Make sure all radios are cloned. Moose Creek stays on forest net. Ensure positive communications before engagement. Use human repeaters as necessary.

Fire Behavior-Active to extreme fire behavior is possible. Identify escape routes and safety zones, ensure LCES is in place. Monitor the weather. If fire moves into asbestos mine area, stay clear.

Fatigue- It has been a long fire season. Ensure you are getting a minimum 7 hours of sleep. Eat well and stay hydrated. Monitor yourself and others for signs of fatigue. Treat minor medical issues at the med unit.

Watch Out Situation of the Day



4. UNFAMILIAR WITH WEATHER AND LOCAL FACTORS INFLUENCING FIRE BEHAVIOR

Mitigate or Change Tactics When Faced With

- ⇒ Indirect Fireline
- ⇒ Lack of Anchor Points
- ⇒ Frontal Assault
- ⇒ High or Extreme Wind Conditions
- ⇒ Reburn Potential
- ⇒ Presence of Hazardous Materials
- ⇒ Lack of Communications With All Forces
- ⇒ Structural Protection
- ⇒ Spotting Becomes Common
- ⇒ Downhill Line Construction
- ⇒ Underslung Line
- ⇒ Fatigued Crews
- ⇒ Re-ignition Becoming Common

Incident Safety Officers: Brian Ayers, Duffy Dufresne, Randy Miller

Brian C. Ayers

MEDICAL PLAN (ICS 206 WF)

1. Incident/Project Name		2. Operational Period	
West Fork/Moose Peak		Date/Time: 9.6.17 0630 - 2200	
3. Ambulance Services			
Name	Complete Address	Phone & EMS Frequency	Advanced Life Support (ALS) Yes No
Libby Volunteer Ambulance	307 Montana Ave, Libby, MT	911 Pink 155.3850	X

4. Air Ambulance Services		
Name	Phone	Type of Aircraft & Capability
Alert Air Ambulance Kalispell MT	Dispatch 406-752-9797. Specify Comm is TAN, VMED 28	Bell 407. Night Capable. Wet LZ if landing in the black or dirt. Free from debris.
Life Flight Sand Point ID, Missoula MT, Coeur 'd Alene ID, Spokane WA	Dispatch: 800-232-0911. Specify Comm is TAN, VMED 28	Agusta 119. Night Capable. Wet LZ if in the black or dirt. Free from debris.

5. Hospitals								
Name Complete Address	Helipad WGS 84 Degrees Decimal Minutes DD° MM.MMM'		Time From ICP Air Ground		Time from Spike camp Air Ground		ER Phone	Level Of Care
Cabinet Peaks Med Ctr 209 Health Park Dr. Libby, MT		48 23.510 N 115 32.770 W	N/A	5 min			406-283-7030	Critical Access
St. Patrick Hospital 500 W. Broadway Missoula MT 59802	Lat Long VHF	46° 52.526 113° 59.984 155.280	47 min	3 hr			406-329-5635	Level 1
Kalispell Regional Medical Center 320 Sunnyview Lane Kalispell MT	Lat Long VHF	48° 12.852 114° 19.511 155.280	30 min	1.25 hrs			406-752-1733	Level 3
Harborview Medical Center 325 9 th Ave Seattle, WA	Lat Long VHF	47° 52.526 122° 19.498 155.2950	1.3 hrs	N/A			206-744-4074	Burn Center Level 1

EMERGENCY PROCEDURES

<ol style="list-style-type: none"> 1. YOU: Assign somebody – <i>anybody</i> – to care for the victim to the best of their ability. 2. If in the field, <u>radio</u> <u>Division on TAC</u>. 3. Do NOT broadcast victim's name 4. Briefly describe emergency 5. State exact location 6. If you think that the victim may need Life Flight, ask for it. Life Flight can always be turned around. 	<ol style="list-style-type: none"> 1. DIVISION or TFLD: 2. Designate Point of Contact to take command. 3. Execute Medical Incident Report (9-line) in IAP and p. 108 in 2014 IRPG 	<ol style="list-style-type: none"> 1. MEDICAL: 2. Div medical, go to site 3. Assume patient care 4. Communicate with Point of Contact 	<ol style="list-style-type: none"> 1. HELIBASE: 2. Consider launching to site based on patient and size-up.
---	---	--	--

MEDICAL PLAN (ICS 206 WF)

6. Division	Area Location Capability	
Ambo for All Divisions and ICP	EMS Responders & Capability:	Radio call:
	Equipment Available on Scene:	
	Medical Emergency Channel:	Command. Radio in to Branch 1 Communications Proceed with 9-Line
	ETA for Ambulance:	
ICP and Base Camp	EMS Responders & Capability:	Radio call:
	Equipment Available on Scene:	
	Medical Emergency Channel:	
	ETA for Ambulance to ICP:	
	Air:	
	Ground, incident ambulance:	
	Ground, 911 ambulance	
Primary Approved Helispot for Emergency Medical Evacuations		
Div A	EMS Responders & Capability:	Radio call:
	Equipment Available on Scene:	
	Medical Emergency Channel:	Command. Radio in to Branch 1 Communications Proceed with 9-Line
	ETA for Ambulance to Scene:	TBD
	Air:	
	Ground:	
	Primary Approved Helispot for Emergency Medical Evacuations	
Div F	EMS Responders & Capability:	Radio call:
	Equipment Available on Scene:	
	Medical Emergency Channel:	Command. Radio in to Branch 1 Communications Proceed with 9-Line
	ETA for Ambulance to Scene:	
	Air:	
	Ground:	
	Primary Approved Helispot for Emergency Medical Evacuations	
Div M	EMS Responders & Capability:	Radio call:
	Equipment Available on Scene:	
	Medical Emergency Channel:	Command. Radio in to Branch 1 Communications Proceed with 9-Line
	ETA for Ambulance to Scene:	
	Air:	
	Ground:	Location Dependent
	Primary Approved Helispot for Emergency Medical Evacuations	

MEDICAL PLAN (ICS 206 WF)

Div N	EMS Responders & Capability:	Radio call:
	Equipment Available on Scene:	
	Medical Emergency Channel:	Command. Radio in to Branch 2 Communications Proceed with 9-Line
	ETA for Ambulance to Scene:	
	Air:	
	Ground:	Location Dependent
	Primary Approved Helispot for Emergency Medical Evacuations	
Div T	EMS Responders & Capability:	Radio call:
	Equipment Available on Scene:	
	Medical Emergency Channel:	Command. Radio in to Branch 2 Communications Proceed with 9-Line
	ETA for Ambulance to Scene:	
	Air:	
	Ground:	Location Dependent
	Primary Approved Helispot for Emergency Medical Evacuations	
Div Z	EMS Responders & Capability:	Radio call:
	Equipment Available on Scene:	
	Medical Emergency Channel:	Command. Radio in to Branch 2 Communications Proceed with 9-Line
	ETA for Ambulance to Scene:	
	Air:	
	Ground:	Location Dependent
	Primary Approved Helispot for Emergency Medical Evacuations	

Reviewed By:	Wayne Hare, MEDL <i>Wayne Hare</i>	2000 Date/Time 9.5.17	Brian Ayers, SOF2 <i>Brian C. Ayers</i>	2000 Date/Time 9-5-17
-----------------	---	--------------------------	--	--------------------------

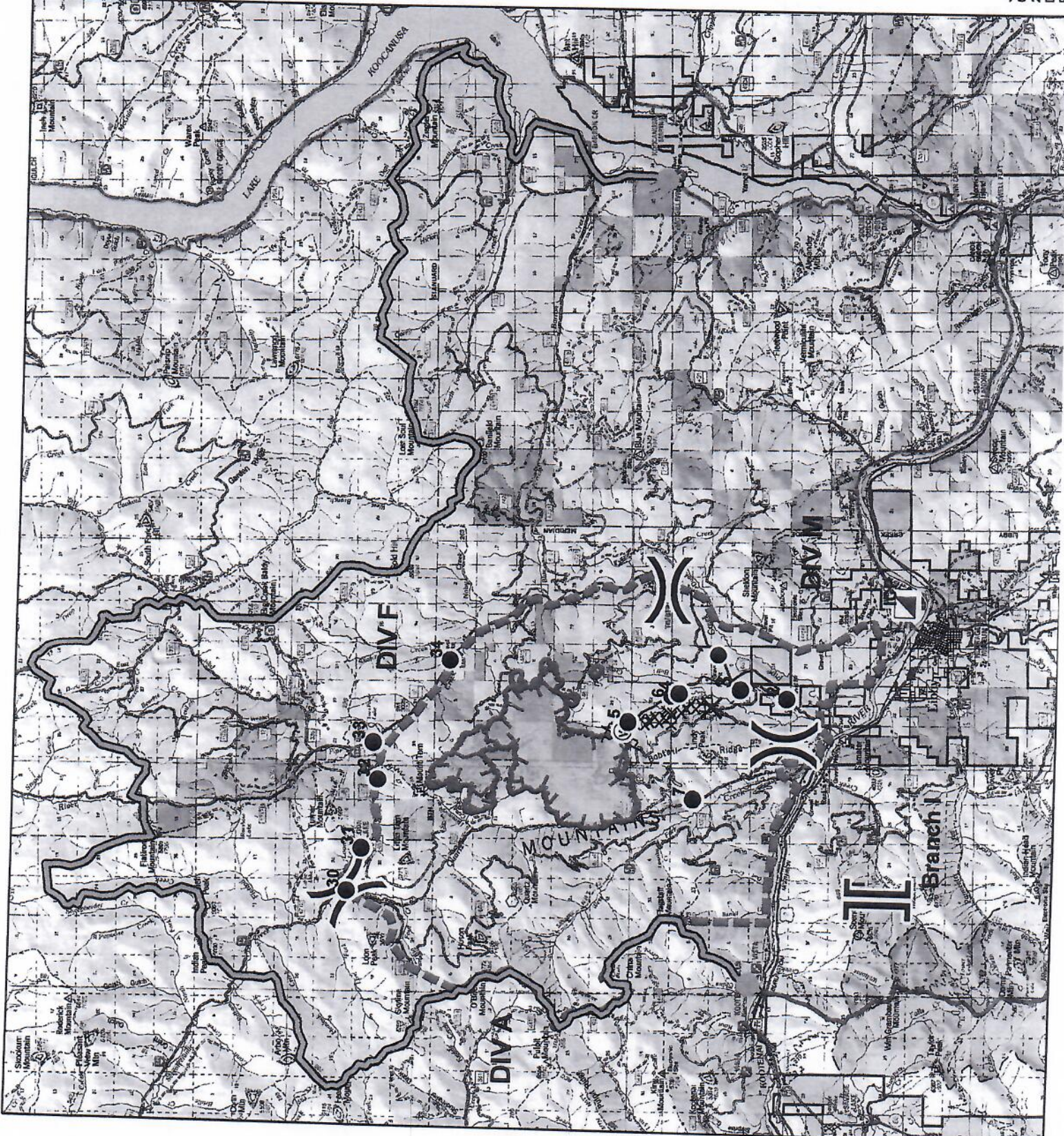
**WEST FORK
MTKNF-000222
Day Shift:
09/06/2017**

0 1 2 Miles

! (Exclamation mark)	Drop Point
⊙ (Circle with dot)	Incident Command Post
⊘ (Circle with cross)	Water Source
() (Curved lines)	Division Break
(Vertical bars)	Branch Break
┌ (L-shaped line)	Uncontaminated Fire Edge
○ (Circle with line)	Completed Doser Line
D (D-shaped line)	Proposed Doser Line
⊕ (Circle with cross)	A Response Area
⊖ (Circle with dot)	Wildfire Day Fire Perimeter
⊗ (Circle with X)	Clearance Area



J. Jelacic
09/05/2017
2000
Datum: NAD 1983
Projection: UTM Zone 11N



Moose Peak

MTKNF-000222

Day Shift: 09/06/2017

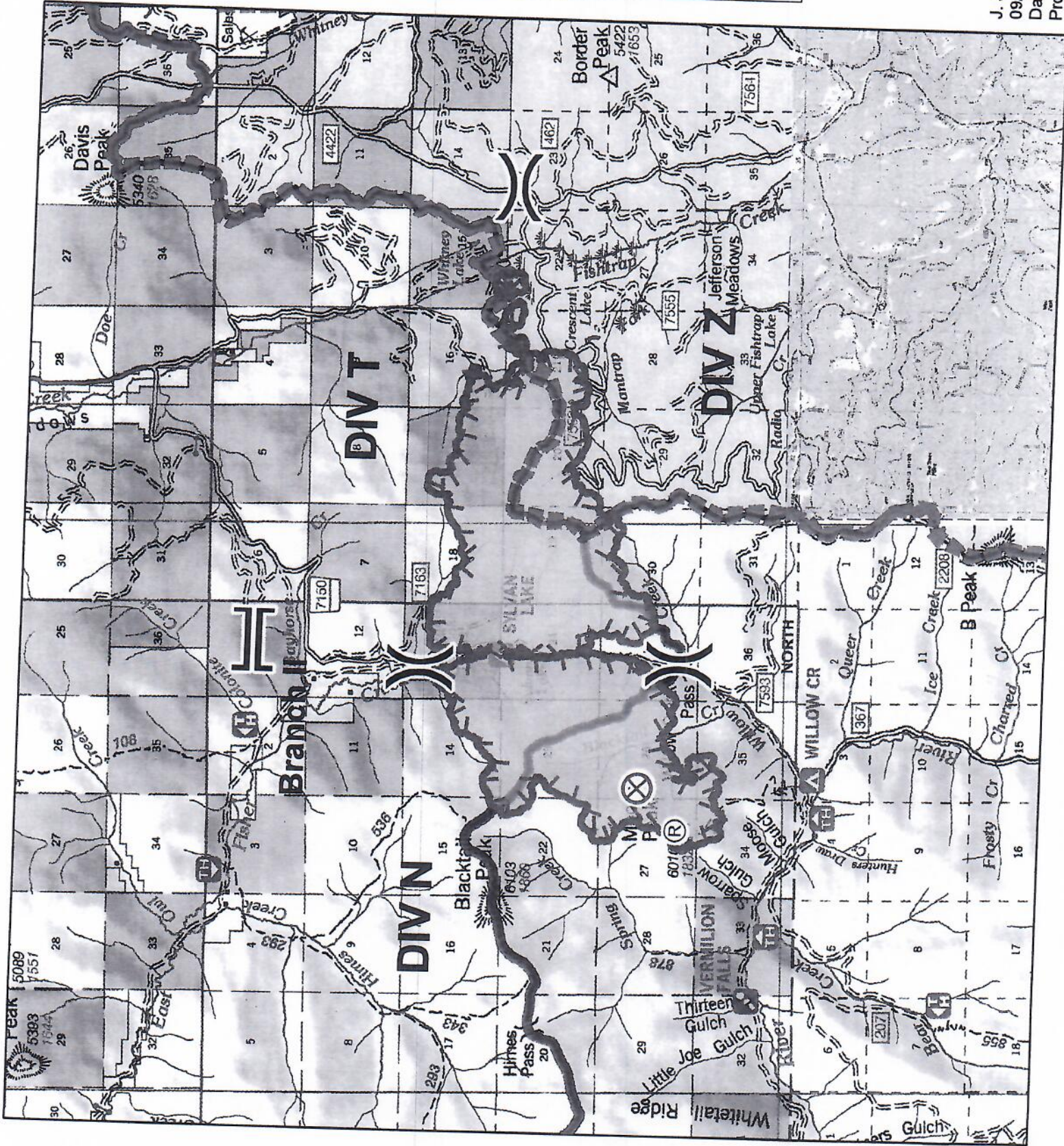


Fire Origin: Repeater: Division Break: Branch Break:

Uncontrolled Fire Edge: Wildfire Daily Fire Perimeter: Closure Area:



J. Jelacic
09/05/2017 @ 2000
Datum: NAD 83
Projection: UTM Zone 11 N



ACTIVITY LOG (ICS 214)

1. Incident Name:	2. Operational Period:	Date From: Date	Date To: Date
3. Name:	4. ICS Position:	Time From: HHMM	Time To: HHMM
5. Home Agency (and Unit):			

6. Resources Assigned:		
Name	ICS Position	Home Agency (and Unit)

7. Activity Log:	
Date/Time	Notable Activities

8. Prepared by: Name:	Position/Title:	Signature: _____
ICS 214, Page 1	Date/Time: Date	

MEDICAL PLAN (ICS 206 WF)

Medical Incident Report

FOR ALL MEDICAL EMERGENCIES: IDENTIFY ON SCENE INCIDENT COMMANDER BY NAME AND POSITION AND ANNOUNCE "MEDICAL EMERGENCY" TO INITIATE RESPONSE FROM IMT COMMUNICATIONS/DISPATCH.

Use items one through nine to communicate situation to communications/dispatch.

1. CONTACT COMMUNICATIONS/DISPATCH

Ex: "Communications, Div. Alpha. Stand-by for Priority Medical Incident Report." (If life threatening request designated frequency be cleared for emergency traffic.)

2. INCIDENT STATUS: Provide incident summary and command structure.

Nature of Injury/Illness	Click here to enter text.	Describe the injury <i>(Ex: Broken leg with bleeding)</i>
Incident Name	Click here to enter text.	Geographic Name + "Medical" <i>(Ex: Trout Meadow Medical)</i>
Incident Commander	Click here to enter text.	Name of IC
Patient Care	Click here to enter text.	Name of Care Provider <i>(Ex: EMT Smith)</i>

3. INITIAL PATIENT ASSESSMENT: Complete this section for each patient. This is only a brief, initial assessment. Provide additional patient info after completing this 9 Line Report.

Number of Patients: Click here to enter text.	Male / Female Click here to enter text.	Age: Click here to enter text.	Weight: Click here to enter text.
Conscious? <input type="checkbox"/> YES <input type="checkbox"/> NO = MEDEVAC!			
Breathing? <input type="checkbox"/> YES <input type="checkbox"/> NO = MEDEVAC!			
Mechanism of Injury: <i>What caused the injury?</i>	Click here to enter text.		
Lat/Long (Datum WGS84) <i>Ex: N 40° 42.45' x W 123° 03.24'</i>	Click here to enter text.		

4. SEVERITY OF EMERGENCY, TRANSPORT PRIORITY

SEVERITY	TRANSPORT PRIORITY
<input type="checkbox"/> URGENT-RED Life threatening injury or illness. <i>Ex: Unconscious, difficulty breathing, bleeding severely, 2° - 3° burns more than 4 palm sizes, heat stroke, disoriented.</i>	Ambulance or MEDEVAC helicopter. Evacuation need is IMMEDIATE.
<input type="checkbox"/> PRIORITY-YELLOW Serious Injury or illness. <i>Ex: Significant trauma, not able to walk, 2° - 3° burns not more than 1-2 palm sizes.</i>	Ambulance or consider air transport if at remote location. Evacuation may be DELAYED.
<input type="checkbox"/> ROUTINE-GREEN Not a life threatening injury or illness. <i>Ex: Sprains, strains, minor heat-related illness.</i>	Non-Emergency. Evacuation considered Routine of Convenience.

5. TRANSPORT PLAN:

Air Transport: (Agency Aircraft Preferred) Click here to enter text.

<input type="checkbox"/> Helispot	<input type="checkbox"/> Short-haul/Hoist	<input type="checkbox"/> Life Flight	<input type="checkbox"/> Other
-----------------------------------	---	--------------------------------------	--------------------------------

Ground Transport: Click here to enter text.

<input type="checkbox"/> Self-Extract	<input type="checkbox"/> Carry-Out	<input type="checkbox"/> Ambulance	<input type="checkbox"/> Other
---------------------------------------	------------------------------------	------------------------------------	--------------------------------

6. ADDITIONAL RESOURCE/EQUIPMENT NEEDS:

<input type="checkbox"/> Paramedic/EMT(s)	<input type="checkbox"/> Crew(s)	<input type="checkbox"/> SKED/Backboard/C-Collar
<input type="checkbox"/> Burn Sheet(s)	<input type="checkbox"/> Oxygen	<input type="checkbox"/> Trauma Bag
<input type="checkbox"/> Medication(s)	<input type="checkbox"/> IV/Fluid(s)	<input type="checkbox"/> Cardiac Monitor/AED
<input type="checkbox"/> Other (i.e. splints, rope rescue, wheeled litter)		

7. COMMUNICATIONS:

Function	Channel Name/Number	Receive (Rx)	Tone/NAC *	Transmit (Tx)	Tone/NAC *
<i>Ex: Command</i>	<i>Forest Rpt, Ch. 2</i>	<i>168.3250</i>	<i>110.9</i>	<i>171.4325</i>	<i>110.9</i>
COMMAND	Click here to enter	Click here to enter	Click here to enter	Click here to enter	Click here to enter text.
AIR-TO-GRND	Click here to enter	Click here to enter	Click here to enter	Click here to enter	Click here to enter text.
TACTICAL	Click here to enter	Click here to enter	Click here to enter	Click here to enter	Click here to enter text.

*(NAC for digital radio system)

8. EVACUATION LOCATION:

Lat/Long (Datum WGS84) <i>EX: N 40 42.45' x W 123 03.24'</i>	Click here to enter text.
Patient's ETA to Evacuation Location:	Click here to enter text.
Helispot/Extraction Size and Hazards:	Click here to enter text.

9. CONTINGENCY:

Considerations: <i>If primary options fail, what actions can be implemented in conjunction with primary evacuation method? Be thinking ahead...</i>	REMEMBER: Confirm ETA's of resources ordered Act according to your level of training Be Alert. Keep Calm. Think Clearly. Act Decisively.
--	---