

Meyers Sapphire Complex

Incident Action Plan

Day

Operational Period

September 8, 2017

0700 – 2000



QR for IAP



Meyers

MT-BDF-002217

USFS P1K7C417 (0102)

FWS FFF2000000KYC40

Sapphire Complex

MT-LNF-001463

USFS: P1K7XL17 (0116)

IDL: FED11417

FWS FFF2000000K7XL0

DNRC: 767012 DOI: K7XL

QR for Maps



Schedule

0700 Morning Briefing

0730 Radio Briefing –

1130 C&G

1700 Pre Planning

1800 Planning Meeting

1800 Night Briefing

1900 Plans Parts DUE



<h1 style="text-align: center;">INCIDENT OBJECTIVES</h1>	1. INCIDENT NAME Meyers Sapphire Complex	2. DATE PREPARED 09/07/2017	3. TIME PREPARED 1800									
4. OPERATIONAL PERIOD (DATE/TIME) FRIDAY 09/08/2017 0700 - 2000 Night 1800 - 0700												
5. GENERAL CONTROL OBJECTIVES FOR THE INCIDENT (INCLUDE ALTERNATIVES) <ol style="list-style-type: none"> 1) Provide for life first of firefighters and public safety by following sound risk management protocols. Firefighter, public, and aviation safety is our priority in all fire management activities. 2) Execute full suppression fire management strategies using direct, indirect, and/or zone protection tactics to guide fires in to man-made or natural barriers, while minimizing firefighter exposure and impacts to critical values at risk. <p style="margin-left: 40px;"><i>Prioritize values at risk as follows: Private lands, infrastructure, grazing allotments, and natural, cultural, and heritage resources.</i></p> <p style="margin-left: 40px;">Specific Values at Risk:</p> <ul style="list-style-type: none"> • <i>Ravalli County: Martin Creek Campground, Billy Springer Memorial subdivision and Bonanza communities in the East Fork of the Bitterroot, and the proposed Meadow Vapor Timber Sale.</i> • <i>Granite County: Moose Lake, Frog Pond Basin, Senate Mountain, Ross Fork Area, East Fork Reservoir, and Georgetown Lake, Little Hogback, Upper Willow, and Lower Willow.</i> • <i>Deerlodge County: Fish Lake Are, and Pintler Face timber sale.</i> 3) Provide initial attack support on the Lolo National Forest and initial attack response on Montana DNRC and Beaverhead-Deerlodge National Forest Protection within the Temporary Flight Restrictions (TFR) 4) Coordinate suppression repair action with the assigned Resource Advisor prior to implementation. 												
MANAGEMENT OBJECTIVES <ol style="list-style-type: none"> 5) Ensure timely and accurate dissemination and coordination of information regarding fire related activities is provided to the public, cooperators, elected official, and stakeholders. 6) Contain costs by using the most cost effective method that does not jeopardize the safety of firefighters and the public. 7) Enforce adequate standards to ensure that loss of accountable property and equipment is 6% or less. 8) Manage the human resources assigned to the fire in a manner that promotes a positive and harassment free work environment and creates a "no tolerance" atmosphere for harassment, alcohol, or illegal drug use. 												
6. WEATHER FORECAST FOR OPERATIONAL PERIOD See attached fire weather forecast.												
7. GENERAL SAFETY MESSAGE See attached safety message.												
8. ATTACHMENTS (√ IF ATTACHED) <table style="width: 100%; border: none;"> <tr> <td><input checked="" type="checkbox"/> ORGANIZATION LIST (ICS 203)</td> <td><input checked="" type="checkbox"/> MEDICAL PLAN (ICS 206)</td> <td><input type="checkbox"/> _____</td> </tr> <tr> <td><input checked="" type="checkbox"/> ASSIGNMENT LIST (ICS 204)</td> <td><input checked="" type="checkbox"/> INCIDENT MAP</td> <td><input type="checkbox"/> _____</td> </tr> <tr> <td><input checked="" type="checkbox"/> COMMUNICATIONS PLAN (ICS 205)</td> <td><input type="checkbox"/> TRAFFIC PLAN</td> <td><input type="checkbox"/> _____</td> </tr> </table>				<input checked="" type="checkbox"/> ORGANIZATION LIST (ICS 203)	<input checked="" type="checkbox"/> MEDICAL PLAN (ICS 206)	<input type="checkbox"/> _____	<input checked="" type="checkbox"/> ASSIGNMENT LIST (ICS 204)	<input checked="" type="checkbox"/> INCIDENT MAP	<input type="checkbox"/> _____	<input checked="" type="checkbox"/> COMMUNICATIONS PLAN (ICS 205)	<input type="checkbox"/> TRAFFIC PLAN	<input type="checkbox"/> _____
<input checked="" type="checkbox"/> ORGANIZATION LIST (ICS 203)	<input checked="" type="checkbox"/> MEDICAL PLAN (ICS 206)	<input type="checkbox"/> _____										
<input checked="" type="checkbox"/> ASSIGNMENT LIST (ICS 204)	<input checked="" type="checkbox"/> INCIDENT MAP	<input type="checkbox"/> _____										
<input checked="" type="checkbox"/> COMMUNICATIONS PLAN (ICS 205)	<input type="checkbox"/> TRAFFIC PLAN	<input type="checkbox"/> _____										
9. PREPARED BY (PLANNING SECTION CHIEF) Marg Olson 		10. APPROVED BY (INCIDENT COMMANDER) Mike Dueitt 										

ORGANIZATIONAL STRUCTURE CHART			
1. Incident Name Meyers Sapphire Complex		Ordering Manager	Maggie Belmore, Nina Gainey
		Security Manager	Scott Carrian
2. Date September 08 – 9, 2017		8. Operations Section	
3. Operational Period Day: 0700 - 2000 Night: 1800 - 0700		Ops Section Chief	Peter Myers, David Walker
		Planning Ops	Jamie Shwartz, Jeremy Brand (t)
4. Incident Commander and Staff		Ops Branch Director	
Incident Commander	Mike Duiett, Steve Parrish		
Safety Officer	Michael Cook		
Safety Officer	Larry Connell, Tony Rivers (t)		
Information Officer	Catherine Hibbard	A. Branch I – Divisions/Groups - Meyers	
Information Officer		Goat Staging	
Liaison Officer	Paul Stevens, Mike Wright		
Human Resource Spec	Linda Buck, K. Cahoon (t)	B. Branch II – Divisions/Group	
5. Agency Administrators / Representative		N/O/P	Alison Coons
Agency	Name	Structure (Lil Hogback)	Alison Coons
B-D NF	Melany Glossa	Z	Alison Coons
B-D NF	Eric Tomasik	Staging (Lil Hogback)	
BNF	Julie King	Night Shift	Bert Plante
BNF	Eric Winthers		
USFS – Lolo NF	Jen Henslek, Dale Deiter		
DNRC	Brian Robbins	C. Branch III – Divisions/Group	
BLM	Joe Ashor / Steve Hancock	A/ E/ K	Shane Sturgil
USFS – B-D NF	Cameron Razor	I	Joe Burgett, Jon Rupp (t)
6. Planning Section		R/T/W	Brian Browning
Chief	Marg Olson, Terry Pierce	Staging DP 25	Jamie Schwartz
Resources Unit	Donna Thomas, Rich Aubuchon		
Demobilization Unit	James Ehrlich	9. Air Operations Branch	
Situation Unit	Bill Coates, Missy Forder (t)	Branch Director	Lynne Howard
ITSS	Joe Ashby, Tony Farmer	Helibase Manager	Brad Bernardy
GIS Specialist	Andrew Thompson, David Jones	Air Support Supervisor	Theresa Williamson
Fire Behavior Analyst	B.Davenport,T.Klukas, B.Dale (t)	Air Tactical Group Supervisor	
Incident Meteorologist	Mark Stubblefield	Helicopter Coordinator	
Training Specialist	Greg Seamon	Air Tanker Coordinator	
READ - BDNF	Ryan Powell		
READ - BNF	Ryan Hughes		
BLM READ	Lea Tuttle		
B-D READ	Wade Jerome	10. Finance	
Lolo READ	Kate Arendt	Chief	Bonnie Johnson
7. Logistics Section		Deputy	Sandra S. Morris, Jenny Cross (t)
Chief	Johnny Smith, Rick Barrett (t)	Equipment	
Service Branch Director	Joe Walker	Comp/Claims	Alice Barnette
Supply Unit	Mark Morgan	Cost Unit	Carolyn Detwiler
Facilities Unit	Susanne Adams, David Moody (t)	Time Unit	Jean Frick
Ground Support Unit	Pat Wright		
Communications Unit	Jerry Patrick		
Medical Unit	Fred Adler		
Prepared by: Donna Thomas, RESL			



FIRE WEATHER FORECAST



Forecast No. 47

Name of Fire: Meyers Fire

Prediction for: Day Shift

Unit: Beaverhead-Deer Lodge National Forest

Shift Date: 09/08/17 Thursday

Time & Date Issued: 1630 MDT 09/07/17

Signed: Scott J Carpenter/Mark Stubblefield, IMET

Weather Discussion: High pressure will begin to move east today allowing mid-level moisture to move over the fire area. This will bring a chance for showers and thunderstorms. Any storms will produce gusty winds and little rain. Slope/valley winds will be primarily terrain driven. Ridgetops will see southwest winds 10-15 MPH in the afternoon. Mid level winds will increase late tonight and Saturday and could bring surface Red Flag conditions on Saturday.

Today...

Weather & Sky: Areas of dense smoke. Partly cloudy (40%) early, becoming by mostly cloudy (80%) by 1600 with scattered showers and thunderstorms after 1600 through around 2400. 30% chance for wetting rain (>0.10")

Max Temp: 75-80°F (Trend: 2 degrees cooler)

Min Humidity: 24-28% (Trend: 10 percent higher)

Valley Wind (20 Ft): Upslope/valley 3-5 mph til 1100, then SW 8-12 mph after 1200. Gusty and erratic winds to 25-35 mph possible near any thunderstorms.

Transport winds: SW 12-16 mph. **Mixing Height:** 14000 ft above sea level

Ridgetop Wind (20 Ft): Southwest 15 mph.

Haines Index: 4 (Low) **LAL:** 1...then 2 after 1600.

Tonight...

Weather & Sky: Mostly cloudy(80%). Scattered thunderstorms until 2400. 30% chance for wetting rain (>0.10"). Areas of dense smoke.

Temp: Minimum 40-46°F...except 60-66°F at 6000-7500 ft

Humidity: Maximum 85-100%...except 43-54% at 6000-7500 ft

Winds (20 Foot): Downslope/valley 3-5 mph after 2000. SW 15-20 mph overnight above 6000 ft.

Transport Winds: Downslope/valley 2-4 mph **Inversion:** 6000 ft above mean sea level (msl)

Ridgetop Wind (20 Ft): Southwest 15 mph.

Outlook For Saturday...Increasing clouds with scattered showers and thunderstorms. 20% chance for wetting rain (>0.10"). Max Temp 72-77°F, Min RH 24-28%. 20-ft Winds Upslope/valley 3-5 mph, then SW 8-12 mph after 1200, then increasing to 17-21 mph with gusts to 27 mph after 1500. Gusty and erratic winds to 30-40 mph possible near any thunderstorms. Transport winds: SW 20 mph. Haines Index: 4 (Low).

Extended Outlook Sunday through Tuesday

	<u>Max T</u>	<u>Min RH</u>	<u>1500 Wind Dir</u>	<u>1500 Wind spd</u>	<u>Sky / Precipitation</u>
Sunday	70-75	26%	NW	18 mph	Sunny. Breezy.
Monday	71-76	23%	NW	14 mph	Sunny. Areas of dense smoke.
Tuesday	73-80	17%	NW	14 mph	Sunny. Areas of dense smoke.

FIRE BEHAVIOR FORECAST

FORECAST NUMBER: 47	INCIDENT TYPE: Wildfire
FIRE NAME: Meyers	OPERATIONAL PERIOD: Day 9/08/2017 Friday
DATE ISSUED: September 7, 2017	TIME ISSUED: 1930 <i>Bruce Davenport</i>
UNIT: MT-BDF	PREPARED BY: Eric Trimble FBAN/Bruce Davenport FBAN

INPUTS

WEATHER SUMMARY: Sky Weather: Partly to mostly cloudy, chance for T-storms after 1600.
Temps: 75-80°F. RH: 24%-28% Haines: 4 (Low). LAL: 1 then 2 after 1600 CWR: 30%
Winds: Ridges: SW 15 mph. Valleys: Upslope 3-5 mph; SW 8-12 mph after 1200.
See the attached Fire Weather Forecast

FUELS: Mixed conifer forest dominated by lodgepole pine, subalpine fir, Engelmann spruce, and Douglas-fir, with isolated pockets of whitebark pine on ridgetops.

- Beetle-killed lodgepole pine makes up 20-40% of forest canopy in the fire area.
- Heavy dead/down fuels from bug kill, and decadent forests are burning completely and holding fire for several operational periods.
- Valley bottom forests, wet meadows and drainages are green and will discourage surface fire spread. Live fuels on upper slopes are mostly cured on all aspects.

Fine Fuels 4-7%; 100hr (1"-3") 6% unchanged; 1000hr (3"+) 7% unchanged;
Forecast ERC at Teepee Pt RAWs: 81 unchanged, above the 97th percentile.

OUTPUTS - FIRE BEHAVIOR

GENERAL:

Heavy fuels are very dry and remain the main driver of fire spread. Expect sustained surface and crown runs where the alignment of wind, heavy fuels or slope occurs, especially when exposed to direct sunlight. Where sheltered from the wind, the fire will follow topography and fuels. Rollout will encourage the fire to become established lower on the slopes for potential upslope runs.

Max backing spread around 1-2 ft/min with flames 2-3 ft. Surface head fire will have 4-7 ft. flame lengths and 15-20 ft/min rates of spread. Considerably higher flame lengths expected with torching and crowning. Spotting is generally expected to be short range (<1/2 mile).

Probability of Ignition (PIG): 40-60% during the peak of the burning period.

SPECIFIC:

DIV A/E – Expect surface fire with occasional single to small group-tree torching/spotting and short uphill runs. Fire will spread downslope into Carp Creek and the Mid Fork of Rock Creek. Fire at the head of the upper West Fork Fishtrap basin will continue spotting and backing down this drainage.

DIV I – Expect active surface fire with small group-tree torching/spotting and short uphill runs. Fire will continue to spread upslope to the south within the 2000 Mussigbrod Burn, East Fork Bitterroot River. Fire established at the head of Howell Creek will continue spotting and backing down this drainage.

DIV K – Expect surface fire with single to small group-tree torching/spotting and short uphill runs. Fire will continue to back downslope to the west.

DIV R/T – Expect surface fire with single to small group-tree torching/spotting and short uphill runs. Fire will generally spread uphill and to the south near the vicinity of Zeke's Meadow.

AIR OPERATIONS: Dense smoke is expected to limit air operations most of the day.

SAFETY: Heads up on steep slopes where spotting and rolling material can ignite fuels below.



Fire Weather Forecast

FORECAST NO: 54
SHIFT DATE: Fri September 8, 2017
FORECAST ISSUED: September 7, 2017

NAME OF FIRE: Sapphire Complex
UNIT: MT-LNF
Incident Meteorologist (T): Derek Williams
Incident Meteorologist: Mark Stubblefield

*****Fire weather watch in Saturday for winds*****

DISCUSSION: Expect afternoon cloud development but only a slight chance for showers or thunderstorms. Substantial rainfall is not expected. Winds will be primarily terrain driven but ridgetops will see a west wind of less than 10 mph in the afternoon, switching to the west-northwest by evening. Winds on Saturday will increase and become windy.

TODAY:

WEATHER: Partly cloudy with smoke and haze. Slight chance of afternoon shower or thunderstorm.

WIND (20 FT): Valleys: Upslope/upvalley 4-7 mph.

Ridges: W-NW 5-8 mph.

MAX TEMPERATURES: Valleys 84-87, Ridges 79-83

MIN RH: Valleys 17-22% Ridges 20-30%

HAINES INDEX: 4 **LAL:** 1

CHANCE OF WETTING RAIN: 10%

INVERSION: Inversion lifting 1300 MDT, lingering smoke and haze. Improvement in visibility for air operations expected around 1400.

TONIGHT:

WEATHER: Increasing smoke with poor visibility. Poor/fair thermal belt recoveries.

WIND (20 FT): Valleys: downslope/downvalley 3-6 mph.

Ridges: SW 6-9 mph.

MIN TEMPERATURES: Valleys 50-55, Ridges: 56-62

MAX RH: Valleys: 65-75% Ridges: 40-50%

HAINES INDEX: 4 **LAL:** 1

CHANCE OF WETTING RAIN: 0%

SATURDAY: *****Red Flag conditions possible*****

WEATHER: Mostly cloudy with areas of smoke and haze. Afternoon showers and isolated thunderstorms. Windy conditions developing.

WIND (20 FT): Valleys: W-SW 10-15 mph, higher in aligned valleys.

Ridges: SW 5-8 mph, increasing to 20-25 mph with gusts to 30 mph.

MAX TEMPERATURES: Valleys 76-81, Ridges 72-76

MIN RH: Valleys: 25-30% Ridges: 25-35%

HAINES INDEX: 3 **LAL:** 1

CHANCE OF WETTING RAIN: 10%

Sunday through Wednesday: Cooler, more stable conditions are expected early next week along with increased relative humidity. West winds will remain elevated through midweek with prevailing dry conditions.

FIRE BEHAVIOR FORECAST

FORECAST NUMBER: 29	TYPE OF FIRE: Wildfire
FIRE NAME: Sapphire Complex	OPERATIONAL PERIOD: 09/08/2017 0600 - 2100
DATE ISSUED: 09/07/2017 @ 1400	
UNIT: MT-BDF	SIGNED: Tim Klukas FBAN

INPUTS

WEATHER SUMMARY:

Warmer temperatures are anticipated today, and relative humidity will be higher than yesterday (today 22-30%). Winds will be out of the W @ 5-8 but variable. Haines Index decreases to 4. See Fire Weather Forecast

Local RAWs Observations (GIRD RAWs Station ID: 242911)					
Index	90 th Percentile	97 th Percentile	Previous Days 1300 Observation (05 SEP 2017)	Wednesdays 1300 Observation (06 SEP 2017)	Thursdays Forecasted 1300 Observation (07 SEP 2017)
Energy Release Component (ERC)	65	75	77	74	80
1 Hr Fuel Moisture	4%	3%	6%	5%	4%
10 Hr Fuel Moisture	5%	4%	6%	5%	4%
100 Hr Fuel Moisture	7%	6%	7%	7%	6%
1000 Hr Fuel Moisture	8%	8%	8%	8%	7%
Woody Fuel Moisture	70%	70%	70%	70%	70%

OUTPUTS

FIRE BEHAVIOR

GENERAL:

Today's forecasted winds are anticipated to be lighter early in the day. Evening increases in winds may occur with slight chance of thunderstorms and clear some smoke out. The slightly higher relative humidities won't decrease the potential due to the drought state of the fuels. If early inversion does occur around 1100 and area gets clear sun with sustained wind, expect rates of spread to increase to levels difficult to manage. Fire activity should build back up on the north end interior pockets in Divisions N, and NW portion of Div Z in Little Hogback Creek. Westerly winds today will be a change in wind direction from yesterday's E and NE winds.

SPECIFIC:

Forested high elevation Lodgepole (TU5): (All Divisions)

- Primary Carrier of fire is heavy forest litter, shrub, and/or small tree understory.
- Key driver to crown fire is ladder fuels and surface winds and terrain alignment.

Forested mid-elevation Douglas-fir (TL5): (All Divisions)

- Primary carrier of fire is the high load conifer litter and light slash.
- Many of the Douglas fir have been defoliated increasing surface fuels, however, decrease potential for crown fire initiation.
- Areas will hold heat well in the duff and heavy fuels
- Some pockets may have picked up activity in thermal belt and spread today

Grass/ Sage low-elevation (GS2) or Timber and grass understory (FM2): (All Divisions)

- Primary carrier of fire in the GS2 is grass and shrub combined. Primary carrier for the FM2 is timber litter & grass.
- FM2 areas in Z that have been recently burned out will be a concern to monitor for potential spots

General Fire Behavior Observations

- Isolated and group torching fire behavior beginning around 1300-1400, mostly interior
- Additional smokes should pop up today in duff and heavy fuels with very low fuel moistures.
- Newly burned areas may have flare ups that occur in the afternoon.

Output Variable	Unit/s	Grass/Sage (GS2)	Timber/Grass Understory (FM2)	Lodgepole (TU5)	Douglas Fir (TL5)
Surface Rate of Spread (maximum)	Ch/hr	20	20	10	9
Flame Length	ft	5	5	8	3
Probability of Ignition from a Firebrand	%	84	84	84	84
Spotting Distance	mi	0.1	0.1	0.1	0.1

****Although predicted PIG is @ 84%, higher values can be reached. **Validate by taking weather observations.**

*****Valleys and drainages that align with the general winds should expect increased windspeeds and increased fire behavior*****

AIR OPERATIONS:

Morning inversion and smoke will continue to impact visibility for air operations. Inversion should lift after 1300.

SAFETY

Be alert for increases in wind speeds in the evening. Wind has been the major transition factor in active fire behavior and has the potential to quickly double rates of spread in finer fuels and increase spotting distances. With active winds above 8mph at eye level, spot fires have been very difficult to suppress.

DIVISION ASSIGNMENT LIST				1. Branch I		2. Group Goat Staging			
3. Incident Name Meyers Sapphire Complex				4. Operational Period Date: 09/08/2017 Time: 0700-2000					
5. Operations Personnel									
Ops Section Chief		Peter Myers, David Walker			Division Supervisor				
Planning Ops		Jamie Schwartz, Jeremy Brand (T)			Air Operations Director		Lynne Howard		
6. Resources Assigned this Period									
Strike Team/Task Force/ Resource Designator		Last Shift	Leader		Number Persons	Trans. Needed	Drop Off PT./Time		Pick Up PT./Time
E-41 ENG6 Brockway Const.		9/13	Alan Brockway		3	N	Meyers ICP 0700		Meyers ICP 2000
E-63 ENG6 High Desert		9/9	Tom Hanks		3	N	Meyers ICP 0700		Meyers ICP 2000
E-190 WTS2 Castle Mtn Fire		9/21	Bob Bastrup		1	N	Meyers ICP 0700		Meyers ICP 2000
E-192 WTS2 Bird Water #8		9/16	Ray Congdon		1	N	Meyers ICP 0700		Meyers ICP 2000
E-44 SKG3 Slack		9/15	Jamie Slack		1	N	Meyers ICP 0700		Meyers ICP 2000
E-233 EXCA T2 DS JR w/ Lowboy		9/10	Kerry Cross		2	N	Meyers ICP 0700		Meyers ICP 2000
E-242 Log Truck Joe Thomas		9/14	Joe Thomas		1	N	Meyers ICP 0700		Meyers ICP 2000
E-251 Log Loader Bryant w/ Lowboy		9/14	Bryce Rasmussen		2	N	Meyers ICP 0700		Meyers ICP 2000
E-263 Log Loader Russ Reed Logging w/ Lowboy		9/20	Steve Kinzel		2	N	Meyers ICP 0700		Meyers ICP 2000
E-54 UTV Bouche 95754						N	Meyers ICP 0700		Meyers ICP 2000
O-122 FAL1 Timber Trail		9/18	Seitz & Chitwood		2	N	Meyers ICP 0700		Meyers ICP 2000
O-356 EMTF		9/7	Brian Williamson		1	N	Meyers ICP 0700		Meyers ICP 2000
7. Control Operations Continue mop up of dozer line and patrol of fire perimeter from H6 North to the 4305 road. Support and implement suppression rehab needs on north and east ends of Goat Creek Fire. Mop up standards are based off your experience and knowledge of fuels, weather and topography to lower the probability of escape to acceptable levels.									
8. Special Instructions If FIRE is within one mile of powerline notify Branch 1 Director. Notify Branch 1 Director two hours prior to conducting any work under the powerline. Coordinate with READ on resource protection needs. Gather GPS tracks of all constructed line in Division and turn into the Situation Unit. Specific hazard mitigation: <ul style="list-style-type: none"> Follow the hazard tree mitigation process on page 22 of the IRPG. Maintain a 100 foot exclusion area around equipment. 									
9. Division/Group Communication Summary									
Function	RX Frequency	TX Frequency	Tone	Channel	Function	RX Frequency	TX Frequency	Tone	Channel
Tactical	168.0500	168.0500	123.0	1	Command	166.3375	170.3875	123.0	9
Command	168.1000	170.4500	123.0	7	Command	164.6750	169.8125	123.0	10
Command	169.5375	164.7125	123.0	8	Command	171.0375	163.8250	123.0	11
					Air to Guard	168.6250	168.6250	110.9	16
Prepared by (Resource Unit Leader)			Approved by (Planning Section Chief) <i>Marg Olson</i>			Date 9/07/2017		Time 2000	

DIVISION ASSIGNMENT LIST				1. Branch II		2. Group N/O/P (Hogback)			
3. Incident Name Meyers Sapphire Complex				4. Operational Period Date: 09/08/2017 Time: 0700-2000					
5. Operations Personnel									
Ops Section Chief		Peter Myers, David Walker			Division Supervisor		Alison Coons		
Planning Ops		Jamie Schwartz, Jeremy Brand (T)			Air Operations Director		Lynne Howard		
6. Resources Assigned this Period									
O-388 TFLD	9/8	Lucas Hurley (T)	1	N	Meyers ICP 0700	Meyers ICP 2000			
O-459 TFLD		Patrick Kieran	1	N	Meyers ICP 0700	Meyers ICP 2000			
E-9 ENG3 Hart Ventures	9/9	Tim England	3	N	Meyers ICP 0700	Meyers ICP 2000			
E-185 ENG3 Wildfire Resources	9/13	Reagan Farley	3	N	Meyers ICP 0700	Meyers ICP 2000			
E-188 ENG6 XTREME	9/19	Keith Balka (T)	3	N	Meyers ICP 0700	Meyers ICP 2000			
E-126 WTS1 High Sierra Enterprise	9/12	Dale Iseman	1	N	Meyers ICP 0700	Meyers ICP 2000			
E-132 WTS2 Primmer Tender	9/14	Rebecca Daul	1	N	Meyers ICP 0700	Meyers ICP 2000			
O-457 EMPF	9/19	Rex Nielsen	1	N	Meyers ICP 0700	Meyers ICP 2000			
E-48 ENG4 Alder Creek E-13	9/8	Boyd Carr R&R 9/10-9/11, back 9/12	3	N	Meyers ICP 0700	Meyers ICP 2100			
E-12 ENG6 Cedar Fire	9/14	Ted Hunter	3	N	Meyers ICP 0700	Meyers ICP 2100			
E-194 WTS2 Bird Water #6	9/16	Todd Benedict	1	N	Meyers ICP 0700	Meyers ICP 2100			
E-179 SKDS Wildland Firefighters	9/10	Larry Pease	2	N	Meyers ICP 0700	Meyers ICP 2100			
E-182 SKDS Attack #3	9/13	Chris Dsorcy	2	N	Meyers ICP 0700	Meyers ICP 2100			
E-125 ENG3 Mountain Camel	9/8	Shawn Wippert	3	N	Meyers ICP 0700	Meyers ICP 2100			
7. Control Operations									
Task: Patrol and mop up along fire edge. Provide support to other Divisions as necessary. Work with READ to identify suppression repair needs									
Purpose: Minimize acres burned and impacts to resources at risk.									
End State: Execute full suppression. Keep fire north of Rock Creek and west of upper Willow Creek.									
8. Special Instructions									
9. Division/Group Communication Summary									
Function	RX Frequency	TX Frequency	Tone	Channel	Function	RX Frequency	TX Frequency	Tone	Channel
Tactical	168.6000	168.6000	123.0	3	Command	166.3375	170.3875	123.0	9
Command	168.1000	170.4500	123.0	7	Command	164.6750	169.8125	123.0	10
Command	169.5375	164.7125	123.0	8	Command	171.0375	163.8250	123.0	11
Air to Ground	169.1500	169.1500		14	Air to Guard	168.6250	168.6250	110.9	16
Prepared by (Resource Unit Leader) Donna Thomas			Approved by (Planning Section Chief) Marg Olson <i>Marg Olson</i>			Date 9/06/2017		Time 2000	

DIVISION ASSIGNMENT LIST				1. Branch II	2. Group Structure (LTL Hogback)					
3. Incident Name Meyers Sapphire Complex				4. Operational Period Date: 09/08/2017 Time: 0700-2000						
5. Operations Personnel										
Ops Section Chief		Peter Myers, David Walker			Division Supervisor			Alison Coons		
Planning Ops		Jamie Schwartz, Jeremy Brand (T)			Air Operations Director			Lynne Howard		
6. Resources Assigned this Period										
Strike Team/Task Force/ Resource Designator	Last Shift	Leader		Number Persons	Trans. Needed	Drop Off PT./Time		Pick Up PT./Time		
TFLD		Kevin Parrish		1	N	Meyers ICP 0700		Meyers ICP 2000		
E-234.1 TFLD	9/16	Josh Strohmeier (T)		1	N	Meyers ICP 0700		Meyers ICP 2000		
E-46 ENG3 Hart Ventures 414253	9/10	Wyatt Lawrence		3	N	Meyers ICP 0700		Meyers ICP 2000		
E-45 ENG4 Inland Forest Mgmt.	9/10	Terry McGovern		3	N	Meyers ICP 0700		Meyers ICP 2000		
E-124 ENG4 Outback Firefighting	9/10	Karl Peso		3	N	Meyers ICP 0700		Meyers ICP 2000		
E-189 ENG4 National Wildland Fire	9/19	Leenkun Baca		3	N	Meyers ICP 0700		Meyers ICP 2000		
E-133 WTS2 Butler Enterprises	9/12	Nick Dole		1	N	Meyers ICP 0700		Meyers ICP 2000		
7. Control Operations										
Protect structures in Upper Willow Creek drainage. Maintain structure protection equipment at Upper Willow and Marshall Creek structures. Provide support to adjacent Divisions as needed. Maintain IA readiness, backfill any structure protection needs with Engines from adjacent divisions.										
8. Special Instructions										
Identify and map structures. Work with Liaison Officer to advise and coordinate with potentially affected private landowners. Gather GPS tracks of all constructed line in Division and turn into the Situation Unit.										
Specific hazard mitigations:										
<ul style="list-style-type: none"> Review the Wildland Urban Interface "watch out" situations on page 12 of the IRPG. For IA, establish LCES and determine trigger points. 										
9. Division/Group Communication Summary										
Function	RX Frequency	TX Frequency	Tone	Channel	Function	RX Frequency	TX Frequency	Tone	Channel	
Tactical	166.7750	166.7750	123.0	5	Command	166.3375	170.3875	123..0	9	
Command	168.1000	170.4500	123.0	7	Command	164.6750	169.8125	123.0	10	
Command	169.5375	164.7125	123.0	8	Command	171.0375	163.8250	123.0	11	
Air to Ground	169.1500	169.1500		14	Air to Guard	168.6250	168.6250	110.9	16	
Prepared by (Resource Unit Leader) Donna Thomas			Approved by (Planning Section Chief) Marg Olson <i>Marg Olson</i>			Date 9/07/2017		Time 0700		

DIVISION ASSIGNMENT LIST				1. Branch II		2. Group Z			
3. Incident Name Meyers Sapphire Complex				4. Operational Period Date: 09/08/2017 Time: 0700-2000					
5. Operations Personnel									
Ops Section Chief		Peter Myers, David Walker			Division Supervisor		Alison Coons		
Planning Ops		Jamie Schwartz, Jeremy Brand (T)			Air Operations Director		Lynne Howard		
6. Resources Assigned this Period									
Strike Team/Task Force/ Resource Designator		Last Shift	Leader		Number Persons	Trans. Needed	Drop Off PT./Time		Pick Up PT./Time
O-460 TFLD			Todd Ayres (T)		1	N	Meyers ICP 0700		Meyers ICP 2000
TFLD			Gary Lambert		1	N	Meyers ICP 0700		Meyers ICP 2000
C-63 HC1 Helena		9/11	Thompson/Palermo		20	N	Meyers ICP 0700		Meyers ICP 2000
C-60 Custer Gallatin T2IA		9/10	Dave Day		20	N	Meyers ICP 0700		Meyers ICP 2000
C-66 HC2IA Grayback Forestry		9/8	Matthew Daugherty		20	N	Meyers ICP 0700		Meyers ICP 2000
E-125 WTS1 R & J Granger Inc.		9/10	Ron Granger		1	N	Meyers ICP 0700		Meyers ICP 2000
E-33 ENG4 Dragon Fighters E-41		9/16	Levi Dufford (T)		3	N	Meyers ICP 0700		Meyers ICP 2000
E-30 ENG6 Red Truck Wildfire		9/16	Ray Brown		3	N	Meyers ICP 0700		Meyers ICP 2000
E-122 ENG6 Griz 1		9/8	Kurt Hennifer		3	N	Meyers ICP 0700		Meyers ICP 2000
E-158 ENG6 Metal Works		9/8	Rick Manchester		3	N	Meyers ICP 0700		Meyers ICP 2000
E-234 ENG6 IL-MPF		9/16	Shaun Trabado		4	N	Meyers ICP 0700		Meyers ICP 2000
O-514 EMPF		9/8	Robin Spurlock		1	N	Meyers ICP 0700		Meyers ICP 2000
O-218 EMTF		9/13	Johanna Hyde		1	N	Meyers ICP 0700		Meyers ICP 2000
O-482 AEMF		9/14	Terry Williamson		1	N	Meyers ICP 0700		Meyers ICP 2000
7. Control Operations									
Task: Continue mop up and cold trail fire edge from division break to H25. Utilize aircraft engines and fire personnel to hold fire north and east of Rock Creek Road. Provide protection to structures.									
Purpose: Minimize acres burned and impacts to resources at risk.									
End State: Execute full suppression. Keep fire east of Rock Creek and minimize impacts to values at risk.									
8. Special Instructions									
Engine to pick up burned equipment along Caprom Creek.									
9. Division/Group Communication Summary									
Function	RX Frequency	TX Frequency	Tone	Channel	Function	RX Frequency	TX Frequency	Tone	Channel
Tactical	168.2000	168.2000	123.0	2	Command	166.3375	170.3875	123.0	9
Command	168.1000	170.4500	123.0	7	Command	164.6750	169.8125	123.0	10
Command	169.5375	164.7125	123.0	8	Command	171.0375	163.8250	123.0	11
					Air to Ground	168.6250	168.6250	110.9	16
Prepared by (Resource Unit Leader) Donna Thomas		Approved by (Planning Section Chief) Marg Olson <i>Marg Olson</i>				Date 9/06/2017		Time 2000	

DIVISION ASSIGNMENT LIST				1. Branch II		2. Group Staging – Little Hogback			
3. Incident Name Meyers Sapphire Complex				4. Operational Period Date: 09/08/2017 Time: 0700-2000					
5. Operations Personnel									
Ops Section Chief		Peter Myers, David Walker			Division Supervisor				
Planning Ops		Jamie Schwartz, Jeremy Brand (T)			Air Operations Director		Lynne Howard		
6. Resources Assigned this Period									
Strike Team/Task Force/ Resource Designator		Last Shift	Leader		Number Persons	Trans. Needed	Drop Off PT./Time		Pick Up PT./Time
E-79 WTT2 Mission Mtn Star		9/8	Wesley Harmon		1	N	Meyers ICP 0700		Meyers ICP 2000
E-40 SKG3 Hall Wood Processing		9/16	Jeff Weer		1	N	Meyers ICP 0700		Meyers ICP 2000
E-177 SKG2 MT. Fire Water		9/9	Carl Warren		2	N	Meyers ICP 0700		Meyers ICP 2000
E-232 EXCA T2 Welch Bros w/ Lowboy		9/10	Jim Davis		2	N	Meyers ICP 0700		Meyers ICP 2000
E-243 EXCA T1 St. Onge w/ Lowboy		9/16	Evan Sippl		1	N	Meyers ICP 0700		Meyers ICP 2000
E-258 EXCA T1 Fousts Inc. w/ Lowboy		9/16	Loren Hull		2	N	Meyers ICP 0700		Meyers ICP 2000
E-262 EXCA T1 Western Montana w/ Lowboy		9/19	Wyatt Lyons		2	N	Meyers ICP 0700		Meyers ICP 2000
E-260 Self Loading Log Truck		9/17	Justin Hulford		1	N	Meyers ICP 0700		Meyers ICP 2000
E-123 ENG6 Buffalo Bird		9/20	Gregg Webster		3	N	Meyers ICP 0700		Meyers ICP 2000
E-187 ENG6 North Idaho Fire		9/15	John Lautenslager		3	N	Meyers ICP 0700		Meyers ICP 2000
E-178 SKDS Attack #2		9/9	Tim Heaps		2	N	Meyers ICP 0700		Meyers ICP 2000
E-191 WTS2 Bird Water #9		9/16	Mike Thomas		1	N	Meyers ICP 0700		Meyers ICP 2000
E-70 DOZ2 Madden Trucking		9/15	Moses Madden		2	N	Meyers ICP 0700		Meyers ICP 2000
E-3 AMBU Three Rivers		10/1	Westgard & Hagestad		2	N	Meyers ICP 0700		Meyers ICP 2000
E-119 UTV Outback Fire 747318							Meyers ICP 0700		Meyers ICP 2000
7. Control Operations Continue mop up of dozer line and patrol of fire perimeter from H6 North to the 4305 road. Support and implement suppression rehab needs on north and east ends of Goat Creek Fire. Mop up standards are based off your experience and knowledge of fuels, weather and topography to lower the probability of escape to acceptable levels.									
8. Special Instructions If FIRE is within one mile of powerline notify Branch 1 Director. Notify Branch 1 Director two hours prior to conducting any work under the powerline. Coordinate with READ on resource protection needs. Gather GPS tracks of all constructed line in Division and turn into the Situation Unit. Specific hazard mitigation: <ul style="list-style-type: none"> • Follow the hazard tree mitigation process on page 22 of the IRPG. • Maintain a 100 foot exclusion area around equipment. 									
9. Division/Group Communication Summary									
Function	RX Frequency	TX Frequency	Tone	Channel	Function	RX Frequency	TX Frequency	Tone	Channel
Tactical	168.0500	168.0500	123.0	1	Command	166.3375	170.3875	123..0	9
Command	168.1000	170.4500	123.0	7	Command	164.6750	169.8125	123.0	10
Command	169.5375	164.7125	123.0	8	Air to Ground				
Prepared by (Resource Unit Leader) Donna Thomas			Approved by (Planning Section Chief) Marg Olson <i>Marg Olson</i>			Date 9/07/2017		Time 2000	

DIVISION ASSIGNMENT LIST				1. Branch II		2. Group Night Shift			
3. Incident Name Meyers Sapphire Complex				4. Operational Period Date: 09/08 – 09/09/2017 Time: 1800-0700					
5. Operations Personnel									
Ops Section Chief		Peter Myers, David Walker			Division Supervisor		Bert Plante		
Planning Ops		Jamie Schwartz, Jeremy Brand (T)			Air Operations Director		Lynne Howard		
6. Resources Assigned this Period									
Strike Team/Task Force/ Resource Designator		Last Shift	Leader		Number Persons	Trans. Needed	Drop Off PT./Time		Pick Up PT./Time
E-26 ENG4 Fireco		9/18	Tyson Hunt		3	N	Meyers ICP 1800		Meyers ICP 0700
E-43 ENG6 Torch Fire 62		9/11	Bob Miller		3	N	Meyers ICP 1800		Meyers ICP 0700
E-44 ENG6 Torch Fire 63		9/14	Trinity Krivanec		3	N	Meyers ICP 1800		Meyers ICP 0700
O-357 EMTF		9/10	Dan Jiminez		1	N	Meyers ICP 1800		Meyers ICP 0700
7. Control Operations Task: Patrol and mop up threats to resources along Rock Creek. Purpose: Minimize area boundary and impacts to resources at risk End State: Execute full suppression.									
8. Special Instructions									
9. Division/Group Communication Summary									
Function	RX Frequency	TX Frequency	Tone	Channel	Function	RX Frequency	TX Frequency	Tone	Channel
Tactical	168.2500	168.2500	123.0	6	Command	166.3375	170.3875	123.0	9
Command	168.1000	170.4500	123.0	7	Command	164.6750	169.8125	123.0	10
Command	169.5375	164.7125	123.0	8	Command	171.0375	163.8250	123.0	11
					Air to Ground	168.6250	168.6250	110.9	16
Prepared by (Resource Unit Leader)			Approved by (Planning Section Chief) <i>Marg Olson</i>			Date 9/06/2017		Time 2000	

ASSIGNMENT LIST		1. Branch	2. Division/Group			
		III	A/E/K – (1 of 2)			
3. Incident Name Meyers Sapphire Complex		4. Operational Period Date: 09/08/2017 Time: 0700 – 2000				
5. Operations Personnel						
Ops Section Chief	Peter Myers, David Walker		Division Supervisor	Shane Sturgill		
Planning Ops	Jamie Schwartz, Jeremy Brand (T)		Air Operations Director	Lynne Howard		
6. Resources Assigned This Period						
Strike Team/Task Force/ Resource Designator	Last Shift	Leader	No. Pers.	Trans. Needed	Drop Off Time	Pick Up Time
National Guard Task Force	9/13	Phinney / Stamper	2	N	Meyers ICP 0700	Meyers ICP 2000
E-312 Engine 50 ENG1	9/13	Christopher Lueck	4	N	Meyers ICP 0700	Meyers ICP 2000
E-313 Engine 51 ENG1	9/13	David Lambers	4	N	Meyers ICP 0700	Meyers ICP 2000
E-314 Tender 50 WT2	9/13	Sara Stafford	2	N	Meyers ICP 0700	Meyers ICP 2000
E-315 Tender 51 WT2	9/13	Mathew Myskewitz	2	N	Meyers ICP 0700	Meyers ICP 2000
E-39 Scotts Fire ENG6	9/14	David Henderson	3	N	Meyers ICP 0700	Meyers ICP 2000
E-304 Caribou Targhee 632 ENG6	9/12	Austin Nielson	4	N	Meyers ICP 0700	Meyers ICP 2000
E-305 Northwest Fire ENG6	9/15	Marcus Jones	3	N	Meyers ICP 0700	Meyers ICP 2000
E-333 Inland Forest ENG4	9/19	John Ailport	2	N	Meyers ICP 0700	Meyers ICP 2000
E-339 Perkins ENG3	9/10	Shawn Betters	3	N	Meyers ICP 0700	Meyers ICP 2000
TFLD	9/11	John Ashcraft	1	N	Meyers ICP 0700	Meyers ICP 2000
TFLD	9/9	Jonathan Dunbar	1	N	Meyers ICP 0700	Meyers ICP 2000
SOF2	9/15	Dave Carter	1	N	Meyers ICP 0700	Meyers ICP 2000
AEMT	9/11	Bobbie Bink	1	N	Meyers ICP 0700	Meyers ICP 2000
<p>Task: Implement structure protection plan at Moose Lake Subdivision, Lolo Camp, and Helen's Cabin. Mop-up all spots on the east side of road 5106. Mop up previous burnout operation around DP1.</p> <p>Purpose: To secure structures at Moose Lake Subdivision, Lolo Camp and Helen's Cabin.</p> <p>End State: Protect values at risk and minimize impacts/threats to the Moose Lake Subdivision, Lolo Camp and Helen's Cabin.</p>						
8. Special Instructions						
Refer to the 220 for aerial water use practices to prevent the spread of aquatic invasives.						
Saw out road 5106 from DP 1 to DP 19.						
Identify IA resources within division.						
9. Division/Group Communication Summary						
Channel	Function	Frequency – RX	Tone – RX	Frequency – TX	Tone – TX	Tone – TX
1	TAC 1	168.0500	114.8	168.0500	114.8	
7	CMD 3	168.0750	114.8	170.4250	114.8	
10	CMD 6	173.0375	114.8	167.3250	114.8	
14	A/G Primary	169.2000		169.2000		
Prepared by Rich Aubuchon, RESL		Approved by: Marg Olson, PSC <i>Marg Olson</i>		Date 09/07/2017		Time 2000

ASSIGNMENT LIST			1. Branch	2. Division/Group		
			III	A/E/K – (2 of 2)		
3. Incident Name			4. Operational Period			
Meyers Sapphire Complex			Date: 09/08/2017			Time: 0700 – 2000
5. Operations Personnel						
Ops Section Chief	Peter Myers, David Walker		Division Supervisor	Shane Sturgill		
Line Ops	Jamie Schwartz, Jeremy Brand (T)		Air Operations Director	Lynne Howard		
6. Resources Assigned This Period						
Strike Team/Task Force/ Resource Designator	Last Shift	Leader	No. Pers.	Trans. Needed	Drop Off Time	Pick Up Time
TFLD	9/9	Cody Miller (t)	1	N	Meyers ICP 0700	Meyers ICP 2000
E-287 Castle Mountain ENG3	9/20	Rhodina Tsosie	3	N	Meyers ICP 0700	Meyers ICP 2000
E-307 Central AZ Fire 548 ENG6	9/14	Mathew Mayhall	3	N	Meyers ICP 0700	Meyers ICP 2000
Miller Creek MOD 3 FAL1	9/9	Alber / Dziadosz	2	N	Meyers ICP 0700	Meyers ICP 2000
SOF2	9/10	Randy Ostman	1	N	Meyers ICP 0700	Meyers ICP 2000
EMTF	9/8	Frank Sperlak	1	N	Meyers ICP 0700	Meyers ICP 2000
EMPT	9/15	Melanie Miller	1	N	Meyers ICP 0700	Meyers ICP 2000
7. Control Operations						
<p>Task: Implement structure protection plan at Moose Lake Subdivision, Lolo Camp, and Helen's Cabin. Mop-up all spots on the east side of road 5106. Mop up previous burnout operation around DP1.</p> <p>Purpose: To secure structures at Moose Lake Subdivision, Lolo Camp and Helen's Cabin.</p> <p>End State: Protect values at risk and minimize impacts/threats to the Moose Lake Subdivision, Lolo Camp and Helen's Cabin.</p>						
8. Special Instructions						
<p>Refer to the 220 for aerial water use practices to prevent the spread of aquatic invasives.</p> <p>Identify IA resources within division.</p> <p>Wolf activity in area; travel in pairs when appropriate and available.</p>						
9. Division/Group Communication Summary						
Channel	Function	Frequency – RX	Tone – RX	Frequency – TX	Tone – TX	Tone – TX
1	TAC 1	168.0500	114.8	168.0500	114.8	
7	CMD 3	168.0750	114.8	170.4250	114.8	
10	CMD 6	173.0375	114.8	167.3250	114.8	
14	A/G Primary	169.2000		169.2000		
Prepared by:		Approved by:		Date		Time
Rich Aubuchon, RESL		Marg Olson, PSC <i>Marg Olson</i>		09/07/2017		2000

ASSIGNMENT LIST		1. Branch	2. Division/Group			
		III	I – (1 of 2)			
3. Incident Name		4. Operational Period				
Meyers Sapphire Complex		Date: 09/08/2017		Time: 0700 – 2000		
5. Operations Personnel						
Ops Section Chief	Peter Myers, David Walker		Division Supervisor	Joe Burgett, Jon Rupp (T)		
Planning Ops	Jamie Schwartz, Jeremy Brand (T)		Air Operations Director	Lynne Howard		
6. Resources Assigned This Period						
Strike Team/Task Force/ Resource Designator	Last Shift	Leader	No. Pers.	Trans. Needed	Drop Off Time	Pick Up Time
E-142 Timber Task Force				N	Meyers ICP 0700	Meyers ICP 2000
E-142 HE Task Force Leader	9/14	Jeff Holliday	1	N	Meyers ICP 0700	Meyers ICP 2000
E-142 Timber Feller Buncher	9/11	Tony Stevens	1	N	Meyers ICP 0700	Meyers ICP 2000
E-142 Timber DOZ2	9/14	Brad Morigeau	1	N	Meyers ICP 0700	Meyers ICP 2000
E-142 Timber SKG2	9/14	Keith Brandemihl	1	N	Meyers ICP 0700	Meyers ICP 2000
E-142 Timber SKD2	9/18	Anthony Stoker	1	N	Meyers ICP 0700	Meyers ICP 2000
E-142 Black Diamond Lowboy	9/10	Jeremy Flick	1	N	Meyers ICP 0700	Meyers ICP 2000
E-142 K-Company Lowboy	9/16	Kelvin Gover	1	N	Meyers ICP 0700	Meyers ICP 2000
E-142 B More Lowboy	9/12	Nick Malinak	1	N	Meyers ICP 0700	Meyers ICP 2000
C-44 Gannett Glacier T2IA	9/10	Josh Leutzinger	21	N	Meyers ICP 0700	Meyers ICP 2000
C-51 Lewis and Clark HC1	9/13	Matt Holmstrom	21	N	Meyers ICP 0700	Meyers ICP 2000
E-1 CC Stacking DOZ3	9/16	Bill Walker	1	N	Meyers ICP 0700	Meyers ICP 2000
E-5 Sherrill Logging Feller Buncher	9/15	Jesse Sherrill	1	N	Meyers ICP 0700	Meyers ICP 2000
E-59 CC Stacking DOZ2	9/12	Craig Cornell	1	N	Meyers ICP 0700	Meyers ICP 2000
E-134 Melrose VFD WT2	9/10	George Goody	1	N	Meyers ICP 0700	Meyers ICP 2000
E-136 AC Logging SKD2	9/17	Alan Conover	1	N	Meyers ICP 0700	Meyers ICP 2000
E-137 Intermountain SKD2	9/16	William Johnson	1	N	Meyers ICP 0700	Meyers ICP 2000
7. Control Operations						
<p>Task: In Billy Springer Memorial and Bonanza Subdivisions, continue structure protection measures. Finish and improve hand and mechanical line around subdivisions and threatened structures.</p> <p>Purpose: To secure structures and private property in the Billy Springer Memorial and Bonanza Subdivisions.</p> <p>End State: To protect values at risk and minimize impacts/threats in the Billy Springer Memorial and Bonanza Subdivisions.</p>						
8. Special Instructions						
<p>Refer to the 220 for aerial water use practices to prevent the spread of aquatic invasives.</p> <p>Identify IA resources within division.</p>						
9. Division/Group Communication Summary						
Channel	Function	Frequency – RX	Tone – RX	Frequency – TX	Tone – TX	Comments
3	TAC 3	168.6000	114.8	168.6000	114.8	
7	CMD 3	168.0750	114.8	170.4250	114.8	
10	CMD 6	173.0375	114.8	167.3250	114.8	
14	A/G Primary	169.2000		169.2000		
16	Air Guard	168.625		168.625	110.9	
Prepared by:		Approved by:		Date	Time	
Rich Aubuchon, RESL		Marg Olson, PSC <i>Marg Olson</i>		09/07/2017	2000	

ASSIGNMENT LIST			1. Branch	2. Division/Group		
			III			I – (2 of 2)
3. Incident Name			4. Operational Period			
Meyers Sapphire Complex			Date: 09/08/2017		Time: 0700 – 2000	
5. Operations Personnel						
Ops Section Chief	Peter Myers, David Walker		Division Supervisor		Joe Burgett, Jon Rupp (T)	
Planning Ops	Jamie Schwartz, Jeremy Brand (T)		Air Operations Director		Lynne Howard	
6. Resources Assigned This Period						
Strike Team/Task Force/ Resource Designator	Last Shift	Leader	No. Pers.	Trans. Needed	Drop Off Time	Pick Up Time
TFLD	9/17	Ryan Woirhaye	1	N	Meyers ICP 0700	Meyers ICP 2000
TFLD	9/8	Derek Wittenberg (t)	1	N	Meyers ICP 0700	Meyers ICP 2000
E-182 Rocky Mountain Fire ENG3	9/14	Ron Gentry	3	N	Meyers ICP 0700	Meyers ICP 2000
E-229 Timber Solutions Forwarder	9/10	Paul Lovaas	1	N	Meyers ICP 0700	Meyers ICP 2000
E-253 Timber Trail EXCA	9/20	Mike Thorson	1	N	Meyers ICP 0700	Meyers ICP 2000
E-268 Rocky Mountain Timber ENG6	9/13	Brian Cahoon	3	N	Meyers ICP 0700	Meyers ICP 2000
E-288 Hotspot Fire ENG6	9/20	Cathy Palin	3	N	Meyers ICP 0700	Meyers ICP 2000
E-289 Gist Enterprises ENG3	9/19	Donald Wood	3	N	Meyers ICP 0700	Meyers ICP 2000
E-340 Vernon E-26 ENG3	9/12	Jerald Whipple	3	N	Meyers ICP 0700	Meyers ICP 2000
E-341 CTCPA E-16 ENG6	9/9	Doug Courson	4	N	Meyers ICP 0700	Meyers ICP 2000
E-342 Metal Works ENG6	9/21	Eugene Weasel	3	N	Meyers ICP 0700	Meyers ICP 2000
E-343 Mountain Camel ENG5	9/12	Ray Govert (t)	3	N	Meyers ICP 0700	Meyers ICP 2000
Flanagan						
E-62 Flanagan Forwarder	9/19	Dale Flanagan	1	N	Meyers ICP 0700	Meyers ICP 2000
E-129 Flanagan Feller Buncher	9/19	Jay Flanagan	1	N	Meyers ICP 0700	Meyers ICP 2000
EMTF	9/12	Chris Noon	1	N	Meyers ICP 0700	Meyers ICP 2000
EMTB	9/15	Olena Gartner	1	N	Meyers ICP 0700	Meyers ICP 2000
7. Control Operations						
<p>Task: In Billy Springer Memorial and Bonanza Subdivisions, continue structure protection measures. Finish and improve hand and mechanical line around subdivisions and threatened structures.</p> <p>Purpose: To secure structures and private property in the Billy Springer Memorial and Bonanza Subdivisions.</p> <p>End State: To protect values at risk and minimize impacts/threats in the Billy Springer Memorial and Bonanza Subdivisions.</p>						
8. Special Instructions						
<p>Refer to the 220 for aerial water use practices to prevent the spread of aquatic invasives.</p> <p>Identify IA resources within division.</p>						
9. Division/Group Communication Summary						
Channel	Function	Frequency – RX	Tone – RX	Frequency – TX	Tone – TX	Comments
3	TAC 3	168.6000	114.8	168.6000	114.8	
7	CMD 3	168.0750	114.8	170.4250	114.8	
10	CMD 6	173.0375	114.8	167.3250	114.8	
14	A/G Primary	169.2000		169.2000		
16	Air Guard	168.625		168.625	110.9	
Prepared by:		Approved by (PSC)		Date		Time
Rich Aubuchon, RESL		Marg Olson, PSC <i>Marg Olson</i>		09/07/2017		2000

ASSIGNMENT LIST		1. Branch	2. Division/Group			
		III		R/T/W		
3. Incident Name Meyers Sapphire Complex		4. Operational Period Date: 09/08/2017		Time: 0700 – 2000		
5. Operations Personnel						
Ops Section Chief	Peter Myers, David Walker		Division Supervisor	Brian Browning		
Planning Ops	Jamie Schwartz, Jeremy Brand (T)		Air Operations Director	Lynne Howard		
6. Resources Assigned This Period						
Strike Team/Task Force/ Resource Designator	Last Shift	Leader	No. Pers.	Trans. Needed	Drop Off Time	Pick Up Time
C-56 Bitterroot HC1	9/15	Jay Wood	20	N	Meyers ICP 0700	Meyers ICP 2000
B-D T2IA	9/19	Quigley / Dickinson (t)	20	N	Meyers ICP 0700	Meyers ICP 2000
TFLD	9/8	Ray Chavez (T)	1	N	Meyers ICP 0700	Meyers ICP 2000
E-63 AC Logging SKG2		Colter		N	Meyers ICP 0700	Meyers ICP 2000
E-86 Aegis Logistics ENG6	9/14	Roy Varney	3	N	Meyers ICP 0700	Meyers ICP 2000
E-143 Moranville WT2	9/16	Robert Birch	1	N	Meyers ICP 0700	Meyers ICP 2000
E-235 Castle Mountain Fire WT2	9/20	Artie James	1	N	Meyers ICP 0700	Meyers ICP 2000
E-306 Green Valley 105 ENG6	9/14	Mike Carrafa	3	N	Meyers ICP 0700	Meyers ICP 2000
E-308 Berthound ENG6	9/14	Shane Prime	3	N	Meyers ICP 0700	Meyers ICP 2000
E-309 Worland 63 ENG6	9/13	Ben Gomez	3	N	Meyers ICP 0700	Meyers ICP 2000
Miller Creek MOD 2 FAL 1	9/19	Nuzzo / Skattum	2	N	Meyers ICP 0700	Meyers ICP 2000
SOFR	9/10	Rick Jones	1	N	Meyers ICP 0700	Meyers ICP 2000
SOFR	9/7	Dennis Crawford (t)	1	N	Meyers ICP 0700	Meyers ICP 2000
EMTF	9/14	Chris Orr	1	N	Meyers ICP 0700	Meyers ICP 2000
7. Control Operations						
<p>Task: Patrol for spot fires and slop overs; mop-up 100%. Mop-up perimeter of burnout 20-50 feet in to secure the fire line. Identify opportunities for direct hand line around Zekes Meadows to the west.</p> <p>Purpose: Minimize acres burned in DIV R / T.</p> <p>End State: Execute full suppression fire management strategies using indirect protection tactics to guide fire into man-made or natural barriers, while minimizing firefighter exposure and impacts to critical values at risk.</p>						
8. Special Instructions						
<p>Refer to the 220 for aerial water use practices to prevent the spread of aquatic invasives.</p> <p>Identify IA resources within division.</p>						
9. Division/Group Communication Summary						
Channel	Function	Frequency – RX	Tone – RX	Frequency – TX	Tone – TX	Comments
4	TAC 4	166.7250	114.8	166.7250	114.8	
7	CMD 3	168.0750	114.8	170.4250	114.8	
10	CMD 6	173.0375	114.8	167.3250	114.8	
14	A/G Primary	169.2000		169.2000		
16	Air Guard	168.625		168.625	110.9	
Prepared by: Rich Aubuchon, RESL		Approved by: Marg Olson, PSC <i>Marg Olson</i>		Date 09/07/2017		Time 2000

ASSIGNMENT LIST			1. Branch		2. Division/Group		
			III		Staging – DP25		
3. Incident Name			4. Operational Period				
Meyers Sapphire Complex			Date: 09/08/2017		Time: 0700 – 2000		
5. Operations Personnel							
Ops Section Chief	Peter Myers, David Walker		Division Supervisor		Jamie Schwartz		
Planning Ops	Jamie Schwartz, Jeremy Brand (T)		Air Operations Director		Lynne Howard		
6. Resources Assigned This Period							
Strike Team/Task Force/ Resource Designator	Last Shift	Leader	No. Pers.	Trans. Needed	Drop Off Time	Pick Up Time	
E-296 RAC Logging Chipper	9/11	Ron Cooper	1	N	DP 25 / 0700	DP 25 / 2000	
Lorengo							
E-47 Lorengo Feller Buncher	9/19	Bob Lorengo	1	N	DP 25 / 0700	DP 25 / 2000	
E-48 Lorengo SKD1	9/10	Joe Lorengo	1	N	DP 25 / 0700	DP 25 / 2000	
E-49 Lorengo Logging Lowboy	9/14	Mike Stokan	1	N	DP 25 / 0700	DP 25 / 2000	
E-52 Lorengo SKD2	9/11	Lee Klemann	1	N	DP 25 / 0700	DP 25 / 2000	
E-263 Lorengo Logging LOAD	9/12	Roy Lorengo	1	N	DP 25 / 0700	DP 25 / 2000	
Kanduch							
E-141 Kanduch EXCA	9/14	Jeff Bohrsen	1	N	DP 25 / 0700	DP 25 / 2000	
E-176 Kanduch Feller Buncher	9/12	Ken Kanduch	1	N	DP 25 / 0700	DP 25 / 2000	
E-260 Kanduch LOAD	9/12	Karl Kanduch	1	N	DP 25 / 0700	DP 25 / 2000	
E-299 Kanduch DOZ2	9/14	Joe Kanduch	1	N	DP 25 / 0700	DP 25 / 2000	
7. Control Operations							
8. Special Instructions							
Complete maintenance of equipment as appropriate and maintain readiness to engage as directed by operations.							
9. Division/Group Communication Summary							
Channel	Function	Frequency – RX	Tone – RX	Frequency – TX	Tone – TX	Comments	
2	TAC 2	168.2000	114.8	168.2000	114.8		
7	CMD 3	168.0750	114.8	170.4250	114.8		
10	CMD 6	173.0375	114.8	167.3250	114.8		
14	A/G Primary	169.2000		169.2000			
Prepared by (RESL) Rich Aubuchon, RESL		Approved by (PSC) Marg Olson, PSC <i>Marg Olson</i>			Date 09/07/2017	Time 2000	

AIR OPERATIONS SUMMARY

Prepared By: Brad Bernardy

Prepared Date/Time: 9/7/2017 1800

1. INCIDENT NAME: Sapphire Complex & Meyers	2. OPERATIONAL PERIOD DATE: 9/8/2017	START TIME: 700	END TIME: 2200	SUNRISE: 0658 Heilbase	SUNSET: 1958 Heilbase
---	--	---------------------------	--------------------------	----------------------------------	---------------------------------

3. REMARKS (Safety Notes, Hazards): Secondary A/A used as assigned by Air Attack. Secondary A/G used as needed. **HOTSY BUCKET WASHOUT:** (1) Beaverhead-Deerlodge (Meyers and Sapphire): *When conducting bucket/snorkel work with Helicopters, ensure that only one water source is used at a time. If utilizing multiple water sources, ensure buckets/snorkels are washed between the use of different sources.* (2) LOLO PART OF SAPHIRE: Required when switching from one drainage to another (3) No wash required when switching dips while on the Bitterroot (4) Bucket wash when switching between Lolo or B-D and Bitterroot. (5) NEVER DIP FROM CLARK FORK.

4. READY ALERT AIRCRAFT Incident Medevac Resources:
THE ASS30B3 (litter-capable) 407MC Bell 407 (backboard only)
Litter Kit at Meyers HB
SHORTHAUL Order via A/C Desk.
** 401HQ @ Lincoln, MT
73BH @ Plains
** Hoist/NVG: Two Bear Air Civilian
A/C Medical (Tan): 155.3400N Tone TX 156.7
A/G Hospital (White): 155.2800

5. Airspace Information:
Sapphire TFR # 7/3065
Freq: 118.2250
Radius: POLYGON
Altitude: 12,000 MSL
Meyers TFR: 7/5927
Freq: 121.0750
Radius: POLYGON
Altitude: 11,000

6. PERSONNEL

	NAME	PHONE #	7. FREQUENCIES	VHF-AM	VHF-FM
6a. Sapphire Meyers Complex					
Air Ops Branch Director	Lynne Howard	678-699-3266	Sapphire A/G PRIMARY A/G 1		169.1500N
Deputy Air Ops Branch Director	Brad Bernardy	601-540-6528	Sapphire A/G SECOND A/G 2		169.08750N
Air Support Group Supervisor	Teresa Williamson	479-264-6446	Sapphire A/A FW		118.2250
Air Tactical Group Supervisor	As needed		Sapphire A/A RW		123.4000
Air Ops Yurt Phone	AOBD/ASGS	406-859-9129			
6c. Common Ops Contacts					
Meyers Helibase Manager	Lee Stewart	406-859-9133	Meyers A/G PRIMARY (A/G 1)		169.2000
Meyers Helibase Manager (T)	Tim Lanterman	720-537-4950	Meyers A/G SECOND (A/G 2)		164.7500
Deck Coordinator	Roco Schroeder	571-220-5647	Meyers A/A FW		121.0750
Meyers Helibase Trailer Phone		406-859-9133	Meyers A/A RW		126.6250
Mixmaster Miner Mud	Marty Posey	575-746-7320	Command - Helibase to ATGS		168.075 Rx - 170.425 TX 114.8
Missoula (Lolo NF)	A/C Desk	406-829-7060			
Dillon (B-D NF)	A/C Desk	406-683-3975/3827			
7b. Meyers Freqs					
7c. Common Freqs					

8. AERIAL SUPERVISION

FAA #	REQ #	TY	MAKE/MODEL	BASE	START	AVAIL	REMARKS
							National Flt Follow
							Air Guard
							DNRC A/G (Yellow)

Signature:

Controlled Unclassified Information // Basic

INCIDENT RADIO COMMUNICATIONS PLAN ICS-205

1. INCIDENT NAME	2. DATE/TIME PREPARED	3. OPERATIONAL PERIOD DATE/TIME
Meysers Fire	9/07/2017 1900	9/08/2017 0600-2000

4. BASIC RADIO CHANNEL UTILIZATION

Ch #	Channel Name	Assignment	RX Frequency	RX Tone / NAC	TX Frequency	TX Tone / NAC	Mode Digital (D) Analog (A) Mixed (M)	Remarks
1	TAC 1	Div A/E/K	168.0500	114.8	168.0500	114.8	A	Fireline Tactical
2	TAC 2	Staging - DP 25	168.2000	114.8	168.2000	114.8	A	Branch III
3	TAC 3	Div I	168.6000	114.8	168.6000	114.8	A	Fireline Tactical
4	TAC 4	Div R/T/W	166.7250	114.8	166.7250	114.8	A	Fireline Tactical
5	TAC 5		166.7750	114.8	166.7750	114.8	A	
6	TAC 6		168.2500	114.8	168.2500	114.8	A	
7	CMD 3	North Of The Fire	168.0750	114.8	170.4250	114.8	A	Fireline To ICP - Emerine Mt.
8	CMD 4	West Of The Fire	170.4125	114.8	165.9625	114.8	A	Fireline To ICP - Bare Hill
9	CMD 5	South Of The Fire	168.5750	114.8	173.6750	114.8	A	Fireline To ICP - Senate Mt.
10	CMD 6	Southeast Of The Fire	173.0375	114.8	167.3250	114.8	A	Fireline To ICP - Tiny Mt.
11	B-D / Emerine	B-D Forest Net	171.0000		170.3500	146.2	A	B-D Forest Net Backup - Emerine
12	TAN	EMS	155.3400		155.3400	156.7	A	Air Ambulance
13	WHITE	EMS	155.2800		155.2800	156.7	A	Ground Ambulance
14	A/G Primary	Tactical	169.2000		169.2000		A	Air To Ground Primary
15	A/G Secondary	Tactical	164.7500		164.7500		A	Air To Ground Secondary
16	AIRGUARD	All Divisions	168.6250		168.6250	110.9	A	Air Emergency or Initial Contact

5. ICS-205 Prepared By

Jerry Patrick COML

SAFETY MESSAGE: DON'T FORGET - POST LOOKOUTS WHO CAN RELAY MESSAGES OUT OF POOR COVERAGE AREAS.

All CMD repeaters are linked. Use the CMD that is clearest to you.

Controlled Unclassified Information // Basic

INCIDENT RADIO COMMUNICATIONS PLAN ICS-205

1. INCIDENT NAME	2. DATE/TIME PREPARED	3. OPERATIONAL PERIOD DATE/TIME
Sapphire Fire	9/07/2017 1900	9/08/2017 0600-2000

4. BASIC RADIO CHANNEL UTILIZATION

Ch #	Channel Name	Assignment	RX Frequency	RX Tone / NAC	TX Frequency	TX Tone / NAC	Mode Digital (D) Analog (A) Mixed (M)	Remarks
1	TAC 1	Goat Staging	168.0500	123.0	168.0500	123.0	A	Branch I
2	TAC 2	Div Z	168.2000	123.0	168.2000	123.0	A	Little Hogback - Branch II
3	TAC 3	Div N/O/P	168.6000	123.0	168.6000	123.0	A	Little Hogback - Branch II
4	TAC 4	Staging	166.7250	123.0	166.7250	123.0	A	Branch II
5	TAC 5	Structure	166.7750	123.0	166.7750	123.0	A	Branch II
6	TAC 6		168.2500	123.0	168.2500	123.0	A	
7	CMD 7	All Divisions	168.1000		170.4500	123.0	A	CMD Rpt for Goat Creek and Slide Rock Fires-West
8	CMD 8	All Divisions	169.5375		164.7125	123.0	A	CMD Rpt for Little Hogback Fire - West
9	CMD 9	All Divisions	166.3375		170.3875	123.0	A	CMD Rpt for Little Hogback Fire - East
10	CMD 10	All Divisions	164.6750		169.8125	123.0	A	CMD Rpt for Goat Creek and Slide Rock Fires-East
11	CMD 11	All Divisions	171.0375	123.0	163.8250	123.0	A	SE End of Little Hogback
12	TAC 12		168.2875	123.0	168.2875	123.0	A	
13	QUIGG RPT	IA	164.7000		164.1000	131.8	A	Lolo Forest Rpt
14	AG 1	Air Attack	169.1500		169.1500		A	Communicate with Air Attack
15	AG 2	Helicopter Ops	169.0875		169.0875		A	Helicopter Operations
16	AIRGRD	All Divisions	168.6250		168.6250	110.9	A	Air Emergency or Initial Contact

5. ICS-205 Prepared By

Jerry Patrick COML

SAFETY MESSAGE: DON'T FORGET - POST LOOKOUTS WHO CAN RELAY MESSAGES OUT OF POOR COVERAGE AREAS.

All CMD repeaters are linked. Use the CMD that is clearest to you.

Meyers Sapphire Complex ICP Phone List

As of 9/07/2017



Incident Commander	(406) 859-9101
Liaison Officer	(406) 859-9102
Safety Officer	(406) 859-9129
Public Information Officer	(406) 859-9107
Operations Section Chief	(406) 859-9129
Air Operations Branch Director	(406) 859-9129
Meyers Helibase	(406) 859-9133
Planning Section/DMOB	(406) 859-9106
DEMOB FAX	(406) 859-9105
Logistics Section Chief	(406) 859-9103
Communications	(406) 859-9099
Facilities Unit Leader	(406) 859-9130
Ground Support	(406) 859-9097
Ground Support	(406) 859-9098
Medical Unit Leader	(406) 859-9100
Ordering Manager	(406) 859-9090
Ordering	(406) 859-9091
Security	(406) 859-9130
Finance Section Chief	(406) 859-9092



HEALTH AND SAFETY MESSAGE

“We don’t plan on luck to be safe, we plan on sound risk management and good decisions”....the Red Team

INCIDENT: : Meyers Sapphire Complex

DATE: Friday, September 8, 2017

Major Hazards & Risks: Transition, Driving, Initial Attack, Snags

Transition: Today is a transition day for all resources from Leach and Almas Type 2 Teams organization to Dueitt’s Type 1 Team organization. Please continue to maintain your situational awareness during all phases of the transition. *If you are not sure about something, ask questions.* Always know what your assignment is, who you are working for and the end state.

Driving: Driving continues to be a major hazard on the fire. Farming and ranching are major industries in the areas surrounding each fire. Be aware of side roads, hills, and sharp curves. *Practice defensive driving* at all times. Reduce speeds when driving in areas you are not familiar with. *Avoid distracted driving.*

Initial Attack: IA is part of our fire responsibility. If you respond on IA, be sure to get a thorough briefing before engaging. *Determine travel routes, communications and rally points before you depart.* At the scene, take time to adequately evaluate the fire, hazards, values and tactics.

Snags: *Heads-up for snags.* Keep personnel out of the immediate area of snags and widow makers. Try to work away from the danger zone of potential falling snags. Flag or *remove snags only when it’s necessary* in work areas to mitigate the hazards.



16.GETTING FREQUENT SPOT FIRES
ACROSS LINE

Transition

- Understand your assignment
- Maintain good communications with your resources at all times
- Use L.C.E.S
- Ask questions if you are unsure

Red Team Safety Officers: Tony Rivers (T), Mike Cook, Larry Connell

INCIDENT SAFETY ANALYSIS 215a

Meyers-Sapphire Complex - Friday, September 08, 2017

8. Location	9. Hazard	6. Control or Abatement Action (Engineering, Administrative, PPE, Avoidance, Education, etc)
ALL	Extreme Fire Behavior	<ul style="list-style-type: none"> ~ Share weather observations with all personnel assigned to division. ~ Establish LCES ~ Establish "Trigger Points" to withdraw. ~ Use "Risk Management" process prior to engaging in suppression actions, refer to page 1, IRPG.
Contingency, IA	Power Utilities	<ul style="list-style-type: none"> ~ Notify all personnel of down electrical lines. ~ Refer to the IRPG page 24 for Power Line Safety. ~ Always treat downed wires as energized. ~ Identify and avoid high tension transmission lines. ~ In high winds or areas of dense smoke, avoid areas under power lines. ~ Be aware of utility restoration in your work area.
ALL	Helicopter Operations	<ul style="list-style-type: none"> ~ Helicopter operations should be used for priority missions. ~ Stay clear of all bucket drops when suppression actions are in place and allow 1 minute prior to re-entry. ~ Pilots or air supervisor ensure ground resources are clear before bucket drops. ~ Monitor A-G communications. ~ Follow aviation safety guidelines in IRPG and IHOG. ~ Ground resources advise pilot of local power lines and local visibility issues.
ALL	Air Operations	<ul style="list-style-type: none"> ~ Follow "Aviation Watch-Out Situations" on page 44, IRPG. ~ Don't plan on air resources for medical transport or resupply. ~ Ensure positive communication with all air resources. ~ Ensure communications are established with operators. ~ During airtanker operations clear the drop zone before approach of the lead plane.
R,T,W,N,O	Structure Protection & HAZMAT	<ul style="list-style-type: none"> ~ Review "Wildland Urban Interface" Watch outs, IRPG page 12. ~ Use "Structure Assessment" checklist, IRPG pages 13-15. ~ Follow "HAZMAT Incident Operations" on pages 34-36 in IRPG. ~ Identify and avoid damaged gas service near structures.
Initial Attack	Downhill Line Construction	<ul style="list-style-type: none"> ~ Minimize downhill line locations. ~ Post lookouts (IRPG pg. 7) ~ Follow downhill line construction guidelines (IRPG pg. 9)
ALL	Hazard Trees	<ul style="list-style-type: none"> ~ Follow "Hazard Tree Safety" guidelines, IRPG page 22. ~ Post lookouts, or use a spotter in mop-up areas with personnel. ~ Don't park vehicles or take breaks in high concentrations of hazard trees. ~ Establish trigger points for disengagement during high wind events. ~ Remember that the hazard zone extends a minimum of 2 1/2 tree heights.
ALL	Steep Terrain & Rolling Debris	<ul style="list-style-type: none"> ~ Plan for medical emergencies and extreme fire behavior / escape routes over steep terrain and limited access. ~ Maintain 8'-10' spacing when working & walking. ~ Don't work above or below any personnel or heavy equipment. ~ Be on the lookout for rolling rocks, debris, or burning material. ~ Evaluate necessity to send personnel in areas with limited access. ~ Post lookouts (IRPG pg 7), identify safety zones and suitable escape routes, provide good communications.
ALL	Fireline Hazards	<ul style="list-style-type: none"> ~ Establish and continue to validate LCES. ~ Avoid radiant heat by wearing appropriate PPE correctly. ~ Use correct tool for task assigned. ~ Follow power line safety protocol as outlined on page 22 in IRPG. ~ Flag and isolate all HAZMAT and alert all personnel working in Division. ~ Follow WUI recommendations on pages 10-11 in IRPG.

INCIDENT SAFETY ANALYSIS 215a

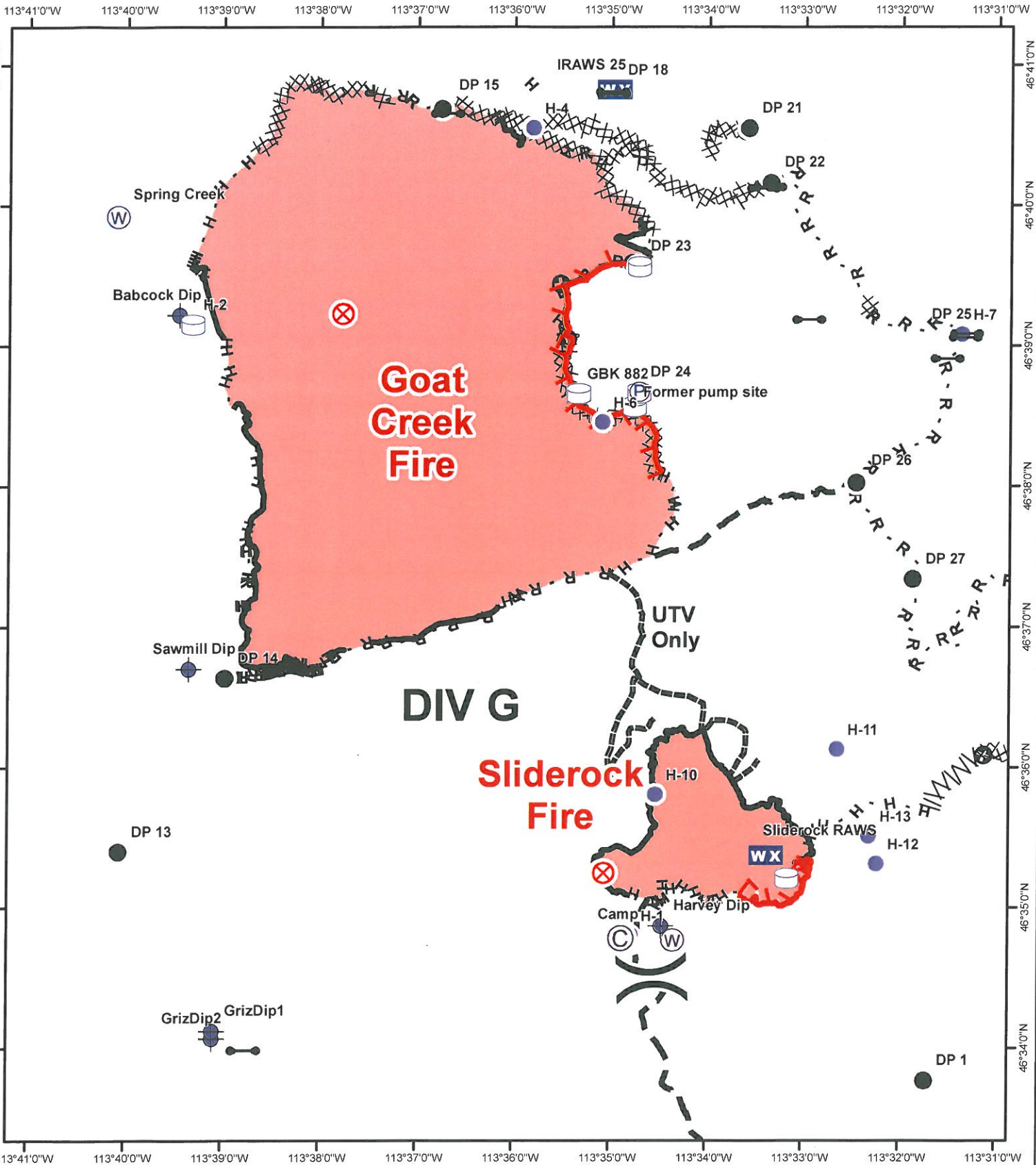
ALL	Injury & Medical Emergency	<ul style="list-style-type: none"> ~ Assist injured employee and provide appropriate medical care. ~ Use EMT's on Division for initial care. ~ Follow medical protocol as outlined in ICS-206 & IRPG Pgs 99-108
ALL	Firing Operations & Devices	<ul style="list-style-type: none"> ~ Only personnel trained in the use of each device will be authorized to use firing equipment. ~ Ensure all personnel are aware of firing operation that may affect them. ~ Wear appropriate PPE. ~ Ensure aerial/ground ignition plans have been adequately developed and personnel are briefed.
ALL	Communications	<ul style="list-style-type: none"> ~ Maintain communication with aviation resources, and suppression organization. ~ Ensure all know frequency and protocol for contacting resources. ~ Use clear terminology, ask questions and ensure good understanding, especially with new resources. ~ Utilize the ICS 205. ~ Utilize human repeaters when working in dead spots. ~ Know who you will contact in case of an emergency and practice the IWI protocol and 9 Line
ALL	Heavy Equipment Operations	<ul style="list-style-type: none"> ~ Ensure communications are established with operators. ~ Use hand signals if other communications are unavailable. ~ Maintain a 50'-100' exclusion area around equipment and increase it to 1 1/2 times tree height when in timber. ~ Use a spotter when backing.
ALL	Night Operations	<ul style="list-style-type: none"> ~ Maintain high visibility in work area and wear vest while in roadway. ~ Use glow sticks to mark hazards. ~ Ensure personnel have a personal light (headlamp) and red strobe to ensure visibility. ~ Watch for signs of fatigue. ~ Take breaks away from areas of known hazard.
ALL	Personal Hygiene	<ul style="list-style-type: none"> ~ Don't share personal items such as water bottles communication devices and utensils. ~ Wash hands before meals, and after use of rest room facilities. ~ Clean & disinfect commonly used surfaces (cell phones, steering wheels, ect.). ~ Cough & sneeze into your sleeve
ALL	Smoke Exposure	<ul style="list-style-type: none"> ~ Use warning lights and provide traffic control on roads as necessary. Rotate crews in and out of smoky areas to limit exposure when possible.
ALL & ICPs	Driving & Traffic	<ul style="list-style-type: none"> ~ Practice "Defensive Driving" techniques traveling on all roads and city streets. ~ Use spotters when backing. ~ Honk horn to alert personnel when backing. ~ Keep clutter off dash and inside cab. ~ Follow Driving LCES (Lights, Chock blocks, Emergency brake, Seat belts. ~ Always use headlights. ~ Yield to pedestrians and bicycles. ~ Observe posted speed limits. ~ Use the 3 second rule for following distance when driving. ~ Use chock blocks, turn wheels into hill. ~ Avoid distractions (eating, cell phones, radio). ~ Ensure that windshields are kept clean of dust and bugs. ~ Use caution when traveling on roads that are impacted by smoke or dusty conditions. ~ When feasible, coordinate travel to and from the hotels to ensure two or more personnel travel together to mitigate long distances.

INCIDENT SAFETY ANALYSIS 215a

ALL	Fatigue & Over Exertion	<ul style="list-style-type: none"> ~ Drink 1 quart of water each hour during and after work. ~ Rotate crews out of smoky areas. ~ Set a reasonable work pace and allow adequate rest breaks while on the project. ~ Use buddy system to monitor personnel of heat related and fatigue issues. ~ Follow work / rest guidelines. Mitigate before next shift.
ALL	Fatigue & Over Exertion	<ul style="list-style-type: none"> ~Ensure adequate rest (7-8 hrs of sound sleep). Stay Hydrated. Eat well balanced diet. Pay attention to minor body aches. Wash hands frequently. Monitor yourself and others for fatigue.
A,E,R,T,W	Mine Shafts	<ul style="list-style-type: none"> ~Avoid stepping on any man made rock or brush piles. Flag when located. Do not enter any mine shafts.

Branch I - Goat Creek & Sliderock Fires

9/8/2017

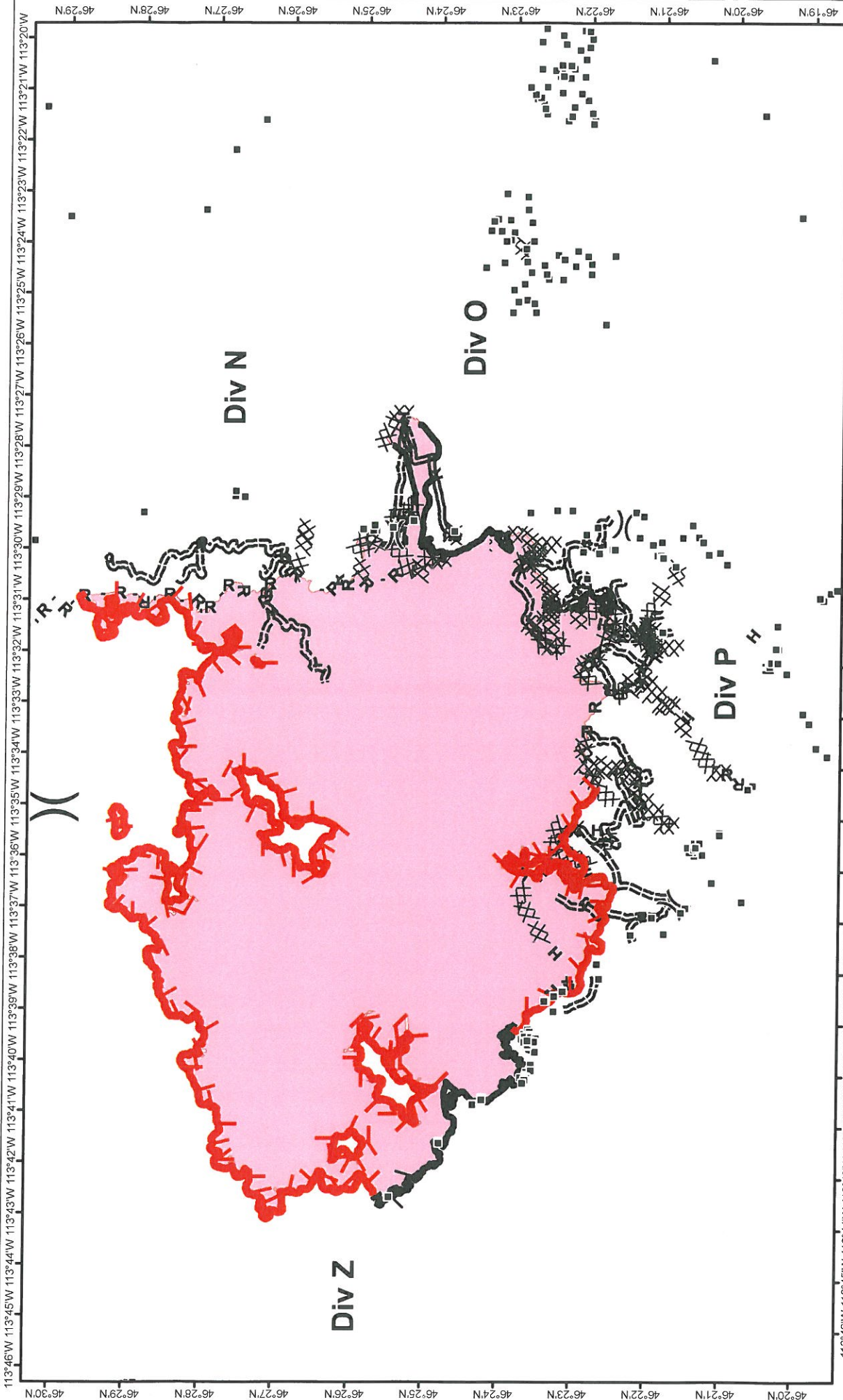


Meyers Sapphire Complex
MT-BDF-002217

Fire Perimeter as of
 9/6/2017 0124
 Goat Creek: 8,305 acres
 Sliderock: 901 acres

- | | | | | | | | | | |
|--|-------------|--|---------------------|--|------------------------|--|----------------------|--|----------------------------|
| | Camp | | Helispot | | Division Break | | Completed Hand Line | | Other |
| | Dip Site | | Mobile Weather Unit | | Uncontrolled Fire Edge | | Completed Line | | R - Road as Completed Line |
| | Drop Point | | Water Source | | Completed Dozer Line | | Line Break Completed | | Planned Fire Line |
| | Fire Origin | | Water Tank | | Gate | | | | |





Branch II
Little Hogback Fire
Meysers Sapphire
Complex
 MT-LNF-002217
 09/08/2017
 Fire perimeter as of
 09/06/2017 0124
 34,310 ac. approx.

SOUTHERN AREA RED TEAM INCIDENT MANAGEMENT TEAM

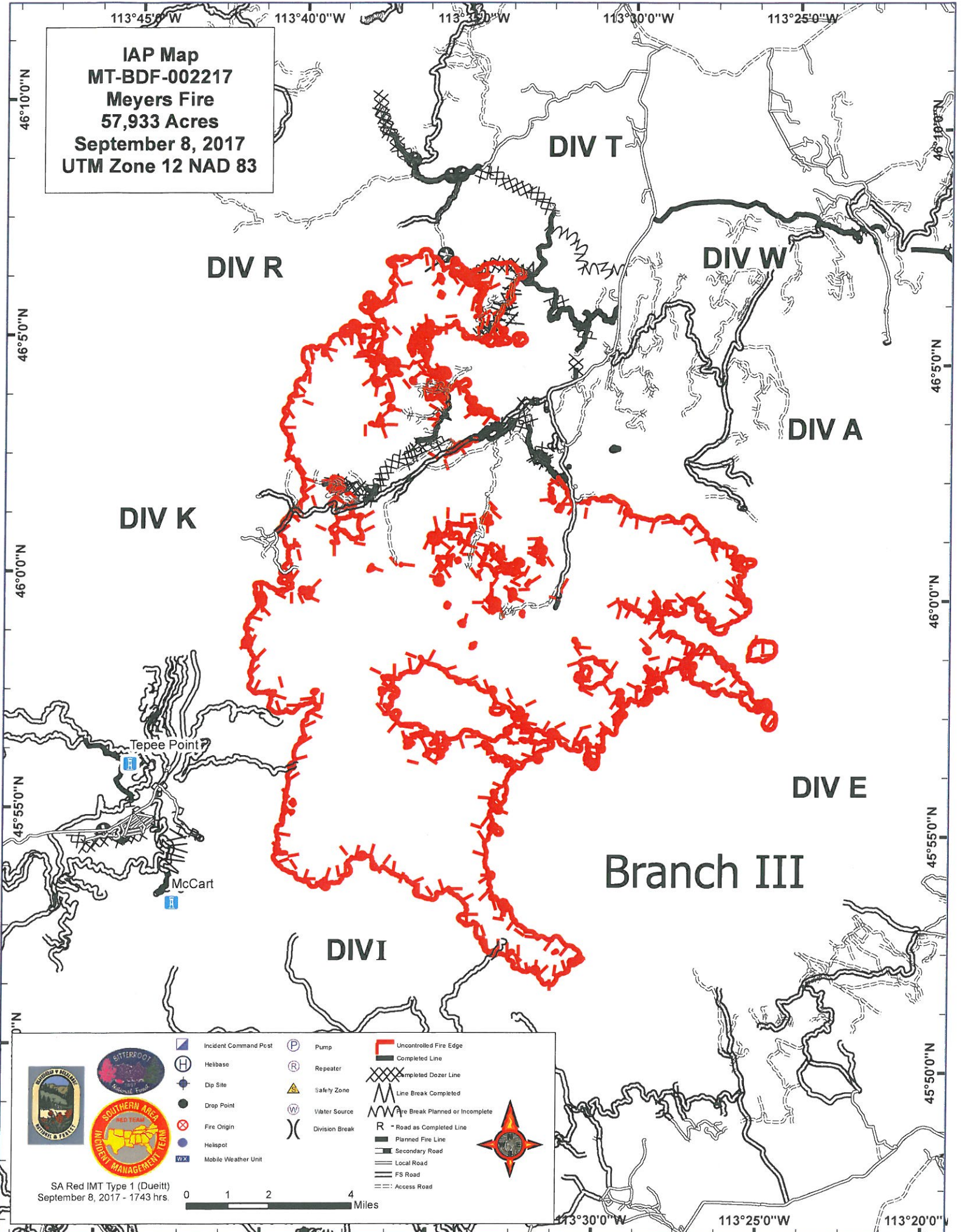
■ Structure
 () Division Break
 — Completed Line
 [] Uncontrolled Fire Edge
 XXXX Completed Dozer Line
 H - H Completed Hand Line
 R - R Road as Completed Line
 ~~~~ Line Break Completed  
 [ ] Completed Burnout

0 0.5 1 2 3 4 Miles

N



**IAP Map**  
**MT-BDF-002217**  
**Meyers Fire**  
**57,933 Acres**  
**September 8, 2017**  
**UTM Zone 12 NAD 83**



Tepee Point  
 McCart

Branch III

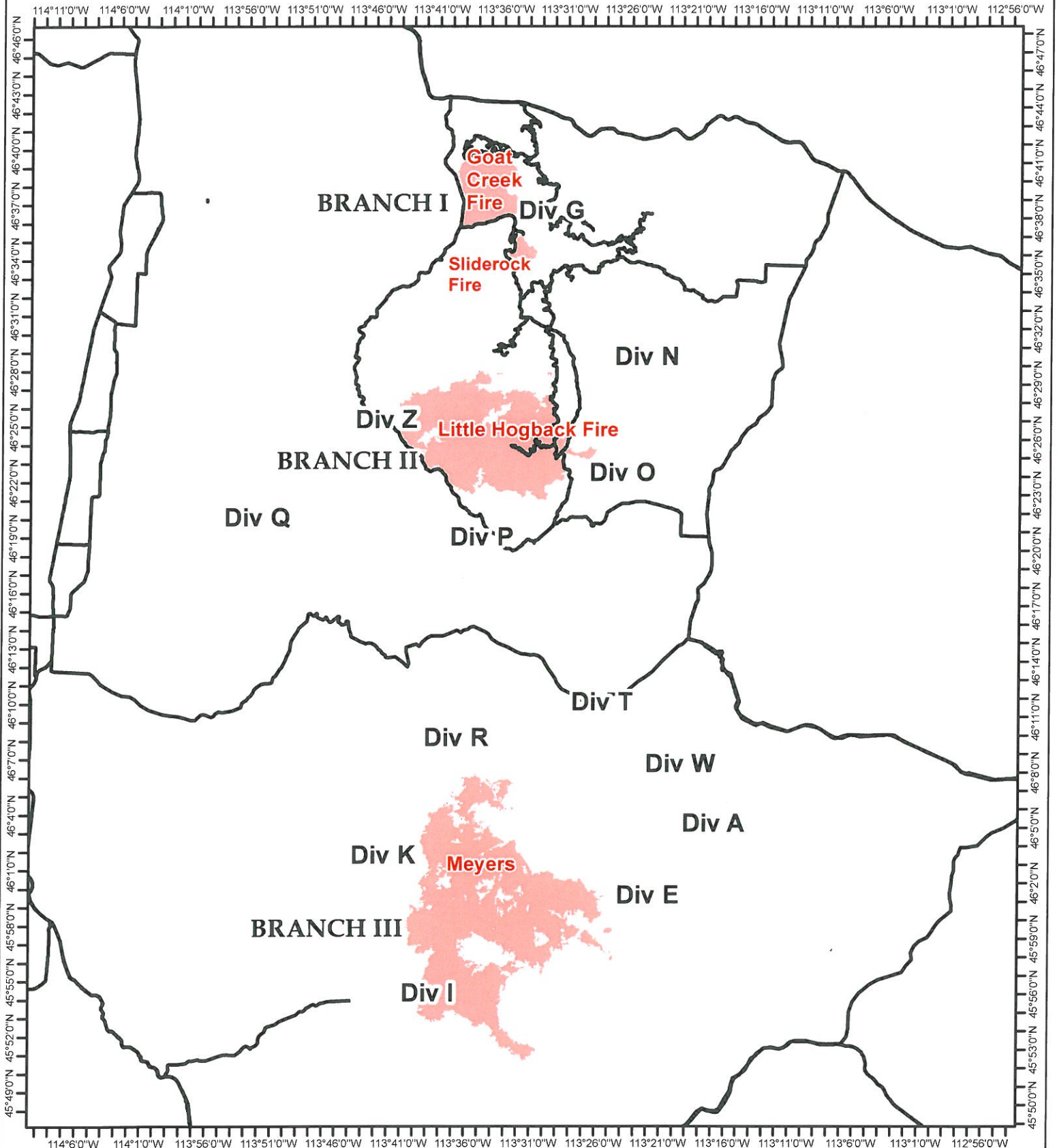
|  |                       |  |                |  |                                  |
|--|-----------------------|--|----------------|--|----------------------------------|
|  | Incident Command Post |  | Pump           |  | Uncontrolled Fire Edge           |
|  | Helibase              |  | Repeater       |  | Completed Line                   |
|  | Dip Site              |  | Safety Zone    |  | Completed Dozer Line             |
|  | Drop Point            |  | Water Source   |  | Line Break Completed             |
|  | Fire Origin           |  | Division Break |  | Fire Break Planned or Incomplete |
|  | Helispot              |  |                |  | R - Road as Completed Line       |
|  | Mobile Weather Unit   |  |                |  | Planned Fire Line                |
|  |                       |  |                |  | Secondary Road                   |
|  |                       |  |                |  | Local Road                       |
|  |                       |  |                |  | FS Road                          |
|  |                       |  |                |  | Access Road                      |

SA Red IMT Type 1 (Dueitt)  
 September 8, 2017 - 1743 hrs.

0 1 2 4 Miles

113°30'0"W 113°25'0"W 113°20'0"W





**Meyers Sapphire Complex**  
**MT-BDF-002217**

Goat Creek: 8,305 acres  
 Sliderock: 901 acres  
 Little Hogback: 34,310 acres  
 Meyers: 57,933 acres  
 Total: 101,449 acres



— Public Roads  
 ■ Fire Perimeters



## MEDICAL PLAN (ICS 206 WF)

|                                                                                                                                                                       |                                                                                                                                                        |                                                                                                       |                                         |                                              |                         |                                              |                               |
|-----------------------------------------------------------------------------------------------------------------------------------------------------------------------|--------------------------------------------------------------------------------------------------------------------------------------------------------|-------------------------------------------------------------------------------------------------------|-----------------------------------------|----------------------------------------------|-------------------------|----------------------------------------------|-------------------------------|
| <b>1. Incident/Project Name</b>                                                                                                                                       |                                                                                                                                                        | <b>2. Operational Period</b>                                                                          |                                         |                                              |                         |                                              |                               |
| Meyers Sapphire Complex                                                                                                                                               |                                                                                                                                                        | Date/Time 9/8/2017 operational period                                                                 |                                         |                                              |                         |                                              |                               |
| <b>3. Ambulance Services</b>                                                                                                                                          |                                                                                                                                                        |                                                                                                       |                                         |                                              |                         |                                              |                               |
| <b>Name</b>                                                                                                                                                           | <b>Complete Address</b>                                                                                                                                | <b>Phone &amp; EMS Frequency</b>                                                                      |                                         | <b>Advanced Life Support (ALS)</b><br>Yes No |                         |                                              |                               |
| A-1 Ambulance Branch 1                                                                                                                                                | ICP, Incident dedicated<br>507 Centennial Ave, Butte, MT                                                                                               | Contact via command, dispatch<br>406-723-3132                                                         |                                         | X                                            |                         |                                              |                               |
| Three Rivers Ambulance Branch 2                                                                                                                                       | Incident dedicated                                                                                                                                     | Command channel<br>Dispatch 406-892-4244                                                              |                                         | X                                            |                         |                                              |                               |
| Granite County                                                                                                                                                        | Philipsburg, MT (volunteer on-call)                                                                                                                    | 911                                                                                                   |                                         | X                                            |                         |                                              |                               |
| <b>4. Air Ambulance Services</b>                                                                                                                                      |                                                                                                                                                        |                                                                                                       |                                         |                                              |                         |                                              |                               |
| <b>Name</b>                                                                                                                                                           | <b>Phone</b>                                                                                                                                           | <b>Type of Aircraft &amp; Capability</b>                                                              |                                         |                                              |                         |                                              |                               |
| Air Idaho Rescue (West Yellowstone)                                                                                                                                   | 1-208-529-6340                                                                                                                                         | Night Vision, ALS flight service, Tan. Ch 12                                                          |                                         |                                              |                         |                                              |                               |
| Life Flight (Missoula and Butte)                                                                                                                                      | 911                                                                                                                                                    | Night vision, ALS transport, Frequency Tan. Ch 12                                                     |                                         |                                              |                         |                                              |                               |
| Two Bear Air                                                                                                                                                          | 911                                                                                                                                                    | Night vision, FLIR, hoist, can transport to ground unit or private aeromed unit. Frequency Tan. Ch 12 |                                         |                                              |                         |                                              |                               |
| <b>5. Hospitals</b>                                                                                                                                                   |                                                                                                                                                        |                                                                                                       |                                         |                                              |                         |                                              |                               |
| <b>Name</b><br><b>Complete Address</b>                                                                                                                                | <b>GPS Datum – WGS 84</b><br><b>Coordinate Standard</b><br><b>Degrees Decimal Minutes</b><br><b>DD° MM.MMM' N - Lat</b><br><b>DD° MM.MMM' W - Long</b> |                                                                                                       | <b>Travel Time</b><br><b>(from ICP)</b> |                                              | <b>Phone</b>            | <b>Helipad</b><br>Yes No                     | <b>Level of Care Facility</b> |
|                                                                                                                                                                       | <b>Lat:</b>                                                                                                                                            | <b>Long:</b>                                                                                          | <b>Air</b>                              | <b>Ground</b>                                |                         |                                              |                               |
| St. Patrick's Hospital<br>500 W Broadway<br>Missoula, MT                                                                                                              | Lat: N 46° 52.551'<br>Long: W113° 59.986'                                                                                                              | 30 min                                                                                                | 120 min                                 | 406-329-5635,<br>option 2 ER<br>Direct       | Yes                     | Level 2 Trauma                               |                               |
| Community Hospital of Anaconda<br>401 W Pennsylvania<br>Anaconda, MT                                                                                                  | Lat: N 46° 07.969'<br>Long: W112° 57.456'                                                                                                              | 15 mins                                                                                               | 45 mins                                 | 406-563-8585                                 | Yes<br>roof &<br>ground | Level 4 community trauma hospital            |                               |
| Granite County Medical Center<br>310 Sansome ST<br>Philipsburg, Mt                                                                                                    | Lat: N 46° 19.811'<br>Long: W113° 17.653'                                                                                                              | 15 min                                                                                                | 30 min                                  | 406-859-3271                                 | Yes                     | community hospital,<br>no trauma designation |                               |
| Marcus Daly Hospital<br>1200 Westwood dr<br>Hamilton MT                                                                                                               | Lat: N 46° 14' 53.45<br>Long: W 114° 10' 19.30                                                                                                         |                                                                                                       | To Spike<br>1.5 hrs                     | 406-363-2211                                 | Yes                     | Level 4 trauma                               |                               |
| <b>Special Notes</b>                                                                                                                                                  |                                                                                                                                                        |                                                                                                       |                                         |                                              |                         |                                              |                               |
| The Medical unit will be open from 0530 – 2200. After hours, security can contact the incident ambulance and the MEDL in case of an emergency in camp or on the line. |                                                                                                                                                        |                                                                                                       |                                         |                                              |                         |                                              |                               |
| <b>6. Division/Branch</b>                                                                                                                                             |                                                                                                                                                        | <b>Area Location Capability</b>                                                                       |                                         |                                              |                         |                                              |                               |
| <b>Division A/E</b><br><br><b>Branch 3</b>                                                                                                                            |                                                                                                                                                        | <b>EMS Responders &amp; Capability:</b>                                                               |                                         | <b>BINK, AEMT(IA)</b>                        |                         |                                              |                               |
|                                                                                                                                                                       |                                                                                                                                                        | <b>Equipment Available on Scene:</b>                                                                  |                                         | spine board, kit, oxygen                     |                         |                                              |                               |
|                                                                                                                                                                       |                                                                                                                                                        | <b>Medical Emergency Channel:</b>                                                                     |                                         | Command Channel                              |                         |                                              |                               |
|                                                                                                                                                                       |                                                                                                                                                        | <b>ETA for Ambulance to Scene:</b>                                                                    |                                         | 45 minutes                                   |                         |                                              |                               |
|                                                                                                                                                                       |                                                                                                                                                        | <b>Air/Ground:</b>                                                                                    |                                         | A/G Primary 169.2000                         |                         |                                              |                               |
|                                                                                                                                                                       |                                                                                                                                                        | <b>Approved Helispots:</b>                                                                            |                                         | <b>H8</b> , near DP 19                       |                         |                                              |                               |
|                                                                                                                                                                       |                                                                                                                                                        | <b>Lat:</b>                                                                                           |                                         | N 45 59.963'                                 |                         |                                              |                               |
|                                                                                                                                                                       |                                                                                                                                                        | <b>Long:</b>                                                                                          |                                         | W113 31.708'                                 |                         |                                              |                               |



## MEDICAL PLAN (ICS 206 WF)

|                                              |                                         |                                                                                       |
|----------------------------------------------|-----------------------------------------|---------------------------------------------------------------------------------------|
| <b>Branch 3</b><br><b>Division R/T/W</b>     | <b>EMS Responders &amp; Capability:</b> | <b>Orr, EMTF</b>                                                                      |
|                                              | <b>Equipment Available on Scene:</b>    | BLS Kit, SKED, AED, BLS                                                               |
|                                              | <b>Medical Emergency Channel:</b>       | Tac on ground/Command Channel                                                         |
|                                              | <b>ETA for Ambulance to Scene:</b>      | 30 minutes                                                                            |
|                                              | <b>Air/Ground:</b>                      | A/G Primary 169.2000                                                                  |
|                                              | <b>Approved Helispots:</b>              | <b>H-18</b> , near DP28                                                               |
|                                              | <b>Lat:</b>                             | N 46° 08.610'                                                                         |
|                                              | <b>Long:</b>                            | W 113° 36.45'                                                                         |
| <b>Branch 3</b><br><b>Division I (India)</b> | <b>EMS Responders &amp; Capability:</b> | <b>Noon, EMT-F Gartner, EMT</b>                                                       |
|                                              | <b>Equipment Available on Scene:</b>    | BLS Kit, Spine Board, Oxygen                                                          |
|                                              | <b>ETA for Ambulance to Scene:</b>      | 1.5 hours                                                                             |
|                                              | <b>Air/Ground:</b>                      | A/G primary                                                                           |
|                                              | <b>Approved Helispots:</b>              | H-31                                                                                  |
|                                              | <b>Lat:</b>                             | N45° 55.288'                                                                          |
|                                              | <b>Long:</b>                            | W113° 43.487'                                                                         |
|                                              | <b>Medical Emergency Channel:</b>       | Command,                                                                              |
| <b>Branch 3</b><br><b>Division K</b>         | <b>EMS Responders &amp; Capability:</b> | <b>Miller, EMPF SPERLAK, EMT</b>                                                      |
|                                              | <b>Equipment Available on Scene:</b>    | ALS/BLS Kit, Sked, AED, O2                                                            |
|                                              | <b>ETA for Ambulance to Scene:</b>      | 45 min                                                                                |
|                                              | <b>Approved Helispot:</b>               | H- 10                                                                                 |
|                                              | <b>Lat:</b>                             | N46° 01.531'                                                                          |
|                                              | <b>Long:</b>                            | W113° 39.998'                                                                         |
|                                              | <b>Medical Emergency Channel:</b>       | Command                                                                               |
| <b>Branch 1</b><br><b>Division G (GOAT)</b>  | <b>Point of Contact:</b>                | Greg Titus                                                                            |
|                                              | <b>EMS Responders &amp; Capability:</b> | <b>Terry Williamson, AEMF</b>                                                         |
|                                              | <b>Equipment Available on Scene:</b>    | BLS, Trauma kit, O2, SKED, Epi                                                        |
|                                              | <b>ETA for Ambulance to scene:</b>      | 1 hr from Missoula                                                                    |
|                                              | <b>Air from Helibase:</b>               | 15 min                                                                                |
|                                              | <b>Approved Helispot:</b>               | H-4                                                                                   |
|                                              | <b>Lat:</b>                             | N 46 40.553                                                                           |
|                                              | <b>Long:</b>                            | W 113 35.817                                                                          |
|                                              | <b>Medical Emergency Channel:</b>       | Command                                                                               |
| <b>Branch 2</b><br><b>Division N</b>         | <b>Point of Contact:</b>                | Alison Coons                                                                          |
|                                              | <b>EMS Responders &amp; Capability:</b> | <b>Rex Nielsen, EMPF</b>                                                              |
|                                              | <b>Equipment Available on Scene:</b>    | ALS meds, BLS, Trauma kit, O2, SKED, AED, KED                                         |
|                                              | <b>ETA for Ambulance to Scene:</b>      | 1hr from DP-49 (Three Rivers Ambulance)                                               |
|                                              | <b>Air from Helibase:</b>               | 15 min                                                                                |
|                                              | <b>Approved Helispot:</b>               | H-14                      H-15                      H-16                      Miner M |
|                                              | <b>Lat:</b>                             | N46 31.110      N46 29.219      N46 26.120      N46 24.102                            |
|                                              | <b>Long:</b>                            | W113 30.650      W113 30.981      W113 30.920      W113 30.278                        |
|                                              | <b>Medical Emergency Channel:</b>       | Command                                                                               |
| <b>Branch 2</b><br><b>Division O</b>         | <b>Point of Contact:</b>                | Alison Coons                                                                          |
|                                              | <b>EMS Responders &amp; Capability:</b> | <b>Johanna Hyde, EMTF</b>                                                             |
|                                              | <b>Equipment Available on Scene:</b>    | BLS, O2, Trauma kit, SKED                                                             |
|                                              | <b>ETA for Ambulance to Scene:</b>      | 30 min from DP-49 (Three Rivers Ambulance)                                            |
|                                              | <b>Air from Helibase:</b>               | 15 min                                                                                |
|                                              | <b>Approved Helispot:</b>               | H-17                                              H-18                                |
|                                              | <b>Lat:</b>                             | N 46 22.493                                      N 49 21.493                          |
|                                              | <b>Long:</b>                            | W 113 31.790                                      W 113 32.538                        |
| <b>Medical Emergency Channel:</b>            | Command                                 |                                                                                       |

## MEDICAL PLAN (ICS 206 WF)

|                                                 |                                         |                                                                                                                                                                                                                                                                                                                                                                                                                                       |                  |
|-------------------------------------------------|-----------------------------------------|---------------------------------------------------------------------------------------------------------------------------------------------------------------------------------------------------------------------------------------------------------------------------------------------------------------------------------------------------------------------------------------------------------------------------------------|------------------|
| <b>Branch 2<br/>Division P</b>                  | <b>Point of Contact:</b>                | Alison Coon                                                                                                                                                                                                                                                                                                                                                                                                                           |                  |
|                                                 | <b>EMS Responders and Capability:</b>   | <b>Three Rivers Ambulance (ALS, Paramedic)</b>                                                                                                                                                                                                                                                                                                                                                                                        |                  |
|                                                 | <b>Equipment Available on Scene:</b>    | BLS, ALS, Trauma gear, O2, AED                                                                                                                                                                                                                                                                                                                                                                                                        |                  |
|                                                 | <b>ETA for Ambulance:</b>               | 30 min from DP-49 (Three Rivers)                                                                                                                                                                                                                                                                                                                                                                                                      |                  |
|                                                 | <b>Air from Helibase:</b>               | 15min                                                                                                                                                                                                                                                                                                                                                                                                                                 |                  |
|                                                 | <b>Approved Helispot:</b>               | H-18                                                                                                                                                                                                                                                                                                                                                                                                                                  | H-19             |
|                                                 | <b>Lat:</b>                             | N 46 21.493                                                                                                                                                                                                                                                                                                                                                                                                                           | N 46 21.547      |
|                                                 | <b>Long:</b>                            | W 113 32.538                                                                                                                                                                                                                                                                                                                                                                                                                          | W 113 33.252     |
|                                                 | <b>Medical Emergency Channel:</b>       | Command                                                                                                                                                                                                                                                                                                                                                                                                                               |                  |
| <b>Branch 2<br/>Division Z</b>                  | <b>Point of Contact:</b>                | Alison Coons                                                                                                                                                                                                                                                                                                                                                                                                                          |                  |
|                                                 | <b>EMS Responders &amp; Capability:</b> | <b>Robin Spurlock, EMPF</b>                                                                                                                                                                                                                                                                                                                                                                                                           |                  |
|                                                 | <b>Equipment Available on scene:</b>    | ALS kit w/Meds, O2, SKED, AED                                                                                                                                                                                                                                                                                                                                                                                                         |                  |
|                                                 | <b>ETA for Ambulance:</b>               | 30 min from ICP to DP-49 (Three Rivers)                                                                                                                                                                                                                                                                                                                                                                                               |                  |
|                                                 | <b>Air from Helibase:</b>               | 15 min                                                                                                                                                                                                                                                                                                                                                                                                                                |                  |
|                                                 | <b>Approved Helispot:</b>               | H-21                                                                                                                                                                                                                                                                                                                                                                                                                                  |                  |
|                                                 | <b>Lat:</b>                             | N 46 24.623                                                                                                                                                                                                                                                                                                                                                                                                                           |                  |
|                                                 | <b>Long:</b>                            | W 113 42.064                                                                                                                                                                                                                                                                                                                                                                                                                          |                  |
|                                                 | <b>Medical Emergency Channel:</b>       | Command                                                                                                                                                                                                                                                                                                                                                                                                                               |                  |
| <b>Branch 2<br/>NIGHT SHIFT</b>                 | <b>Point of Contact:</b>                | Bert Plante                                                                                                                                                                                                                                                                                                                                                                                                                           |                  |
|                                                 | <b>EMS Responders &amp; Capability:</b> | <b>Dan Jimenez, EMTF</b>                                                                                                                                                                                                                                                                                                                                                                                                              |                  |
|                                                 | <b>Equipment Available on Scene:</b>    | Trauma kit, Backboard, O2, Epi                                                                                                                                                                                                                                                                                                                                                                                                        |                  |
|                                                 | <b>ETA for Ambulance:</b>               | 30 min from ICP to DP-49 (Three Rivers)                                                                                                                                                                                                                                                                                                                                                                                               |                  |
|                                                 | <b>Air from Helibase:</b>               | 15 min                                                                                                                                                                                                                                                                                                                                                                                                                                |                  |
|                                                 | <b>Approved Helispot:</b>               | H-21                                                                                                                                                                                                                                                                                                                                                                                                                                  |                  |
|                                                 | <b>Lat:</b>                             | N 46 24.623                                                                                                                                                                                                                                                                                                                                                                                                                           |                  |
|                                                 | <b>Long:</b>                            | W 113 42.064                                                                                                                                                                                                                                                                                                                                                                                                                          |                  |
|                                                 | <b>Medical Emergency Channel:</b>       | Command                                                                                                                                                                                                                                                                                                                                                                                                                               |                  |
| <b>ICP</b>                                      | <b>EMS responders and capability</b>    | <b>Dale Guynes EMTB. A-1Ambulance ALS, BLS</b>                                                                                                                                                                                                                                                                                                                                                                                        |                  |
|                                                 | <b>Equipment Available on Scene:</b>    | AED, medical unit supplies                                                                                                                                                                                                                                                                                                                                                                                                            |                  |
|                                                 | <b>Medical Emergency Channel:</b>       | Command Channel                                                                                                                                                                                                                                                                                                                                                                                                                       |                  |
|                                                 | <b>ETA for Ambulance to Scene:</b>      | Staged at ICP <a href="http://wildfiretoday.com/wp-content/uploads/2015/08/Map-of-wildfire-smoke-4-pm-MT-8-2-2015.jpg">http://wildfiretoday.com/wp-content/uploads/2015/08/Map-of-wildfire-smoke-4-pm-MT-8-2-2015.jpg</a> <a href="http://wildfiretoday.com/wp-content/uploads/2015/08/Map-of-wildfire-smoke-4-pm-MT-8-2-2015.jpg">http://wildfiretoday.com/wp-content/uploads/2015/08/Map-of-wildfire-smoke-4-pm-MT-8-2-2015.jpg</a> |                  |
|                                                 | <b>Air/ground:</b>                      | Varies                                                                                                                                                                                                                                                                                                                                                                                                                                |                  |
|                                                 | <b>Approved Helispots:</b>              | Helibase                                                                                                                                                                                                                                                                                                                                                                                                                              |                  |
|                                                 | <b>Lat:</b>                             | N 41° 11.038'                                                                                                                                                                                                                                                                                                                                                                                                                         |                  |
|                                                 | <b>Long:</b>                            | W 113° 29.615 ' elevation 6000'                                                                                                                                                                                                                                                                                                                                                                                                       |                  |
| <b>1. Prepared by<br/>(Medical Unit Leader)</b> | <b>Date/Time</b>                        | <b>2. Reviewed By (Safety Officer)</b>                                                                                                                                                                                                                                                                                                                                                                                                | <b>Date/Time</b> |
| Fred Adler 479-238-6064                         | 9/7/2017, 1200                          | Larry Conell                                                                                                                                                                                                                                                                                                                                                                                                                          | 9/17             |



# MEDICAL PLAN (ICS 206 WF)

## Medical Incident Report

**FOR ALL MEDICAL EMERGENCIES: IDENTIFY ON SCENE INCIDENT COMMANDER BY NAME AND POSITION AND ANNOUNCE "MEDICAL EMERGENCY" TO INITIATE RESPONSE FROM IMT COMMUNICATIONS/DISPATCH.**

**Use items one through nine to communicate situation to communications/dispatch.**

**1. CONTACT COMMUNICATIONS/DISPATCH**

*Ex: "Communications, Div. Alpha. Stand-by for Priority Medical Incident Report." (If life threatening request designated frequency be cleared for emergency traffic.)*

**2. INCIDENT STATUS:** *Provide incident summary and command structure.*

|                                 |  |                                                                   |
|---------------------------------|--|-------------------------------------------------------------------|
| <b>Nature of Injury/Illness</b> |  | <i>Describe the injury<br/>(Ex: Broken leg with bleeding)</i>     |
| Incident Name                   |  | <i>Geographic Name + "Medical"<br/>(Ex: Trout Meadow Medical)</i> |
| Point of Contact                |  | <i>Name of Point of Contact</i>                                   |
| Patient Care                    |  | <i>Name of Care Provider<br/>(Ex: EMT Smith)</i>                  |

**3. INITIAL PATIENT ASSESSMENT:** *Complete this section for each patient. This is only a brief, initial assessment. Provide additional patient info after completing this 9 Line Report.*

|                                                                                       |               |      |         |
|---------------------------------------------------------------------------------------|---------------|------|---------|
| Number of Patients:                                                                   | Male / Female | Age: | Weight: |
| Conscious? <input type="checkbox"/> YES <input type="checkbox"/> <b>NO = MEDEVAC!</b> |               |      |         |
| Breathing? <input type="checkbox"/> YES <input type="checkbox"/> <b>NO = MEDEVAC!</b> |               |      |         |
| Mechanism of Injury:<br><i>What caused the injury?</i>                                |               |      |         |
| Lat/Long (Datum WGS84)<br><i>Ex: N 40° 42.45' x W 123° 03.24'</i>                     |               |      |         |

**4. SEVERITY OF EMERGENCY, TRANSPORT PRIORITY**

| SEVERITY                                                                                                                                                                                                           | TRANSPORT PRIORITY                                                                           |
|--------------------------------------------------------------------------------------------------------------------------------------------------------------------------------------------------------------------|----------------------------------------------------------------------------------------------|
| <input type="checkbox"/> <b>URGENT-RED Life threatening injury or illness.</b><br><i>Ex: Unconscious, difficulty breathing, bleeding severely, 2° – 3° burns more than 4 palm sizes, heat stroke, disoriented.</i> | Ambulance or MEDEVAC helicopter. Evacuation need is <b>IMMEDIATE.</b>                        |
| <input type="checkbox"/> <b>PRIORITY-YELLOW Serious Injury or illness.</b><br><i>Ex: Significant trauma, not able to walk, 2° – 3° burns not more than 1-2 palm sizes.</i>                                         | Ambulance or consider air transport if at remote location. Evacuation may be <b>DELAYED.</b> |
| <input type="checkbox"/> <b>ROUTINE-GREEN</b><br>Not a life threatening injury or illness.<br><i>Ex: Sprains, strains, minor heat-related illness.</i>                                                             | Non-Emergency. Evacuation considered <b>Routine of Convenience.</b>                          |

**5. TRANSPORT PLAN:**

**Air Transport:** (Agency Aircraft Preferred)

|                                       |                                           |                                      |                                |
|---------------------------------------|-------------------------------------------|--------------------------------------|--------------------------------|
| <input type="checkbox"/> Helispot     | <input type="checkbox"/> Short-haul/Hoist | <input type="checkbox"/> Life Flight | <input type="checkbox"/> Other |
| <b>Ground Transport:</b>              |                                           |                                      |                                |
| <input type="checkbox"/> Self-Extract | <input type="checkbox"/> Carry-Out        | <input type="checkbox"/> Ambulance   | <input type="checkbox"/> Other |

**6. ADDITIONAL RESOURCE/EQUIPMENT NEEDS:**

|                                                                            |                                      |                                                  |
|----------------------------------------------------------------------------|--------------------------------------|--------------------------------------------------|
| <input type="checkbox"/> Paramedic/EMT(s)                                  | <input type="checkbox"/> Crew(s)     | <input type="checkbox"/> SKED/Backboard/C-Collar |
| <input type="checkbox"/> Burn Sheet(s)                                     | <input type="checkbox"/> Oxygen      | <input type="checkbox"/> Trauma Bag              |
| <input type="checkbox"/> Medication(s)                                     | <input type="checkbox"/> IV/Fluid(s) | <input type="checkbox"/> Cardiac Monitor/AED     |
| <input type="checkbox"/> Other (i.e. splints, rope rescue, wheeled litter) |                                      |                                                  |

**7. COMMUNICATIONS:**

| Function    | Channel Name/Number | Receive (Rx) | Tone/NAC * | Transmit (Tx) | Tone/NAC * |
|-------------|---------------------|--------------|------------|---------------|------------|
| COMMAND     |                     |              |            |               |            |
| AIR-TO-GRND |                     |              |            |               |            |
| TACTICAL    |                     |              |            |               |            |

\*(NAC for digital radio system)

**8. EVACUATION LOCATION:**

|                                                                 |  |
|-----------------------------------------------------------------|--|
| Lat/Long (Datum WGS84)<br><i>EX: N 40 42.45' x W 123 03.24'</i> |  |
| Patient's ETA to Evacuation Location:                           |  |
| Helispot/Extraction Size and Hazards:                           |  |

**9. CONTINGENCY:**

*Considerations: If primary options fail, what actions can be implemented in conjunction with primary evacuation method? Be thinking ahead...*

**REMEMBER:** Confirm ETA's of resources ordered  
Act according to your level of training  
**Be Alert. Keep Calm. Think Clearly. Act Decisively.**





|                                                |              |                                    |                       |                  |
|------------------------------------------------|--------------|------------------------------------|-----------------------|------------------|
| <b>UNIT LOG</b>                                |              | 1. INCIDENT NAME                   | 2. DATE PREPARED      | 3. TIME PREPARED |
| 4. UNIT NAME/DESIGNATORS                       |              | 5. UNIT LEADER (NAME AND POSITION) | 6. OPERATIONAL PERIOD |                  |
| <b>7. PERSONNEL ROSTER ASSIGNED</b>            |              |                                    |                       |                  |
| NAME                                           | ICS POSITION | HOME BASE                          |                       |                  |
|                                                |              |                                    |                       |                  |
|                                                |              |                                    |                       |                  |
|                                                |              |                                    |                       |                  |
|                                                |              |                                    |                       |                  |
|                                                |              |                                    |                       |                  |
|                                                |              |                                    |                       |                  |
|                                                |              |                                    |                       |                  |
|                                                |              |                                    |                       |                  |
|                                                |              |                                    |                       |                  |
|                                                |              |                                    |                       |                  |
|                                                |              |                                    |                       |                  |
|                                                |              |                                    |                       |                  |
|                                                |              |                                    |                       |                  |
|                                                |              |                                    |                       |                  |
|                                                |              |                                    |                       |                  |
|                                                |              |                                    |                       |                  |
|                                                |              |                                    |                       |                  |
|                                                |              |                                    |                       |                  |
|                                                |              |                                    |                       |                  |
|                                                |              |                                    |                       |                  |
|                                                |              |                                    |                       |                  |
| <b>8. ACTIVITY LOG (CONTINUE ON NEXT PAGE)</b> |              |                                    |                       |                  |
| TIME                                           | MAJOR EVENTS |                                    |                       |                  |
|                                                |              |                                    |                       |                  |
|                                                |              |                                    |                       |                  |
|                                                |              |                                    |                       |                  |
|                                                |              |                                    |                       |                  |
|                                                |              |                                    |                       |                  |
|                                                |              |                                    |                       |                  |
|                                                |              |                                    |                       |                  |
|                                                |              |                                    |                       |                  |
|                                                |              |                                    |                       |                  |
|                                                |              |                                    |                       |                  |
|                                                |              |                                    |                       |                  |
|                                                |              |                                    |                       |                  |
|                                                |              |                                    |                       |                  |
|                                                |              |                                    |                       |                  |
|                                                |              |                                    |                       |                  |
|                                                |              |                                    |                       |                  |
|                                                |              |                                    |                       |                  |
|                                                |              |                                    |                       |                  |
|                                                |              |                                    |                       |                  |
|                                                |              |                                    |                       |                  |
|                                                |              |                                    |                       |                  |
|                                                |              |                                    |                       |                  |
|                                                |              |                                    |                       |                  |