

Meyers Sapphire Complex

Incident Action Plan *Day*

Operational Period
September 10, 2017
0700 – 2000



QR for IAP



Meyers

MT-BDF-002217

USFS P1K7C417 (0102)

FWS FFF2000000K7C40

Sapphire Complex

MT-LNF-001463

USFS: P1K7XL17 (0116)

IDL: FED11417

FWS FFF2000000K7XL0

DNRC: 767012 DOI: K7XL

QR for Maps



Schedule

0700 Morning Briefing
0730 Radio Briefing –
1130 C&G
1700 Pre Planning
1800 Planning Meeting
1800 Night Briefing
1900 Plans Parts DUE



ORGANIZATION ASSIGNMENT LIST (ICS 203)

1. Incident Name:		2. Operational Period: 0700 - 2000	
MEYERS SAPPHIRE COMPLEX		Date/Time From: 09/10/2017 0700	SUN
		Date/Time To: 09/10/2017 2000	SUN
3. Incident Commander(s) and Command Staff:		SUPPLY UNIT	MARK MORGAN
IC/UC	MIKE DUEITT MARK MORALES	FACILITIES UNIT	SUSANNE ADAMS, DAVID MOODY (T)
SAFETY OFFICER	MICHAEL COOK, LARRY CONNELL TONY RIVERS (T)	GROUND SUPPORT UNIT	THOMAS "BO" SULLIVAN CHARLES REESE
INFORMATION OFFICER	CATHERINE HIBBARD, JOE MAZZEO, JENI GARCIN (T)	COMMUNICATIONS UNIT	JERRY PATRICK
LIAISON OFFICER	PAUL STEVENS MIKE WRIGHT	MEDICAL UNIT	FRED ADLER
		ORDERING MANAGER	MAGGIE BELMORE, NINA GAINEY
		SECURITY MANAGER	SCOTT CARRIAN
4. Agency/Organization Representative(s):		7. Operations Section:	
Agency/Organization	Name	OPS SECTION CHIEF	PETER MYERS, DAVID WALKER
B-D NF	MELANY GLOSSA	PLANNING OPS	JAMIE SCHWARTZ, JEREMY BRAND (T)
B-D NF	ERIC TOMASIK	Branch	I
BNF	JULIE KING	DIVISION/GROUP	G
BNF	ERIC WINTHERS	Branch	II
USFS - LOLO NF	JEN HENSLEK CHRIS FURR	DIVISION/GROUP	N/O/P
DNRC	BRIAN ROBBINS	DIVISION/GROUP	STRUCTURE
BLM	JOE ASHOR, STEVE HANCOCK	DIVISION/GROUP	Z
USFS - B-D NF	CAMERON RASOR	DIVISION/GROUP	STAGING - LIL HOGBACK
		DIVISION/GROUP	NIGHT SHIFT
		Branch	III
		DIVISION/GROUP	A/E
		DIVISION/GROUP	I
		DIVISION/GROUP	K
		DIVISION/GROUP	R/T
		DIVISION/GROUP	W
		DIVISION/GROUP	GREG TITUS
		DIVISION/GROUP	ALISON COONS
		DIVISION/GROUP	ALISON COONS
		DIVISION/GROUP	BERT PLANTE
		DIVISION/GROUP	JOE BURGETT
		DIVISION/GROUP	J. BRAND, J RUPP (T)
		DIVISION/GROUP	SHANE STURGILL
		DIVISION/GROUP	BRIAN BROWNING, JACOB JERESEK (T)
		DIVISION/GROUP	KELLY CORNWALL
5. Planning Section:		7b. Air Operations Branch:	
CHIEF	TERRY PIERCE	AIR OPS BRANCH DIRECTOR	LYNNE HOWARD, BART KICKLIGHTER (T)
RESOURCES UNIT	DONNA THOMAS, RICH R AUBUCHON BARRY FARRELL	HELIBASE MANAGER	BRAD BERNARDY
DEMOBILIZATION UNIT	MARG OLSON	AIR SUPPORT SUPERVISOR	TERESA L WILLIAMSON
SITUATION UNIT	JASON BRAUNSTEIN, MISSY FORDER (T)	8. Finance/Administration Section:	
ITSS	JOE ASHBY, TONY FARMER	CHIEF	BONNY JOHNSON
GIS SPECIALIST	ANDREW THOMPSON, DAVID JONES	DEPUTY	SANDRA S. MORRIS, JENNY CROSS (T)
FIRE BEHAVIOR ANALYST	BRUCE DAVENPORT, T. KLUKAS BRENDA DALE (T)	COMPENSATION UNIT	ALICE BARNETTE DORIS DOSTER
INCIDENT METEOROLOGIST	MARK STUBBLEFIELD	COST UNIT	CAROLYN DETWILER KARILYN PUTT (T)
TRAINING SPECIALIST	GREG SEAMON	TIME UNIT	JEAN FRICK JUDY GAU (T)
HUMAN RESOURCE SPECIALIST	LINDA BUCK K. CAHOON (T)		
READ - BDNF	RYAN POWELL		
READ - BNF	RYAN HUGHES		
BLM READ	LEA TUTTLE		
B-D READ	WADE JEROME		
LOLO READ	KATE ARENDT		
6. Logistics Section:			
CHIEF	JOHNNY SMITH, RICK BARRETT (T)		
SERVICE BRANCH DIRECTOR	JOE WALKER		
9. Prepared By:	Name: DONNA THOMAS	Position/Title: RESL	Signature:
ICS 203	IAP Page	Date/Time: 09/09/2017 0752	



FIRE WEATHER FORECAST



Forecast No. 49

Name of Fire: Meyers Sapphire Complex

Prediction for: Day Shift

Unit: Beaverhead-Deer Lodge National Forest

Shift Date: 09/10/17 Sunday

Time & Date Issued: 1835 MDT 09/09/17

Signed: Mark Stubblefield, IMET *MS*

Weather Discussion: High pressure will begin to build over the Rocky Mountains today through Tuesday. This will bring warmer high temperatures, lower RHs, and less wind. Stronger overnight inversions will form with lows near freezing below the inversions. These inversions will last longer and allow for more smoke to fill the valleys. Afternoons will still be breezy...especially above around 6500 feet.

Today...

Weather & Sky: Areas of dense smoke. Partly cloudy with a slight (10%) chance of showers.

Meyers Fire (6000 to 8500 feet):

Max Temp: 76-83°F (Trend: 3-5 degrees warmer)

Min Humidity: 22-26% (Trend: 2-4 percent lower)

Hogback Fire: (4000-6000 feet):

Max Temp: Valleys 86-91 Ridges 81-85

Min RH: Valleys 19-25% Ridges 23-30%

Valley Wind (20 Ft): Upslope/valley 3-5 mph til 1000, southwest winds 10-15 MPH by late morning... increasing to 15 to 20 MPH.

Transport winds: SW 15-20 MPH. Mixing Height: 12500 MSL

Ridgetop Wind (20 Ft): Southwest 15 to 20 MPH.

Haines Index: 2 (very low) LAL: 1

Tonight...

Weather & Sky: Partly cloudy. Areas of dense smoke.

Meyers Fire (6000 to 8500 feet):

Min Temp: Minimum 30-36°F...48 to 53 6500-7500 ft

Max Humidity: Maximum 85-100%...38-45% 6500-7500 ft

Hogback Fire: (4000-6000 feet):

Min Temp: Valleys 32-38 Ridges 50 to 58

Max RH: Valleys 70-78% Ridges 36-43%

Winds (20 Foot): SW 12 to 15 MPH until around 1900...then downcanyon 2 to 4 MPH.

Inversion: 6000-6500 ft above mean sea level.

Outlook For Monday.. Areas of smoke...otherwise partly cloudy. Max Temp 83 to 93F, Min RH 15-22%. 20-ft Winds Upslope/valley 3-5 MPH, then W 8-12 MPH after 1100. Mixing level 10,000 MSL Transport winds: W 10 MPH. Haines Index: 3 (Low).

Extended Outlook Monday through Wednesday

	<u>Max T</u>	<u>Min RH</u>	<u>1500 Wind Dir</u>	<u>1500 Wind spd</u>	<u>Sky / Precipitation</u>
<u>Tuesday</u>	85-95	18%	SW	12 MPH	Sunny. Areas of dense smoke.
<u>Wednesday</u>	75-85	28%	W	18 MPH	Mostly cloudy. Chance of showers and thunderstorms.
<u>Thursday</u>	62-72	35%	SE	12 MPH	Rain with snow showers above 9000 feet.

FIRE BEHAVIOR FORECAST

FORECAST NUMBER: 49	TYPE OF FIRE: Wildfire
FIRE NAME: Meyers	OPERATIONAL PERIOD: Day 09/10/2017 Sunday
DATE ISSUED: 09/09/2017	TIME ISSUED: 1700
UNIT: MT-BDF	PREPARED BY: Bruce Davenport FBAN/Brenda Dale FBANt

INPUTS

WEATHER SUMMARY: Warmer temperatures, similar humidities and less wind than yesterday, but still breezy in the afternoon.

Temps: 76 to 83°F **RH:** 22-26%. **Winds:** **Ridges:** SW 5-15 mph to **20** mph in late afternoon. **Valleys:** Upslope early at 3-5 mph increasing and SW 10-20 mph until 1900 then switching to down canyon 2-4 mph.

OUTPUTS – FIRE BEHAVIOR**GENERAL:**

Evening thunderstorms and southwest winds may clear smoke out in the AM decreasing the intensity and duration of the morning inversion.

Sheltered Timber Fuels: FL: 5 to 8 ft. **ROS:** .1 to .25 mph **PIG:** 60% **Spotting:** .1 to .5 miles.

Open Timber and Grass: FL: 5 to 8 ft. **ROS:** .1 to .5 mph **PIG:** 60% **Spotting:** .1 to .5 miles.

Fire will continue to smolder in heavy fuels which will occasionally promote single or group tree torching throwing embers that will most likely create a spot fire.

SPECIFIC:

FUELS: Mixed conifer forest dominated by lodgepole pine, subalpine fir, Engelmann spruce, and Douglas-fir, with isolated pockets of whitebark pine on ridgetops.

- The southwest winds will provide the most opportunity for growth in DIVS W/A.
- Beetle-killed lodgepole pine makes up 20-40% of forest canopy in the fire area.
- Heavy dead/down fuels from bug kill, and decadent forests are burning completely. Recent fire scars are inhibiting surface spread where present.
- Valley bottom forests, wet meadows and drainages are green and will discourage surface fire spread. Live fuels on upper slopes continue to cure on all aspects.

Fine Fuels 4-7%; 100hr (1"-3") 6% unchanged; 1000hr (3"+) 6% unchanged; ERC at Teepee Pt RAWs has been above the 97th percentile.

AIR OPERATIONS: Dense smoke is expected to delay air operations in the morning.

SAFETY: Evaluate and communicate presence of snag hazards and tactics for removal/avoidance to each crewmember.

FIRE BEHAVIOR FORECAST

FORECAST NUMBER: 31	TYPE OF FIRE: Wildfire
FIRE NAME: Sapphire Complex	OPERATIONAL PERIOD: Day 09/10/2017 Sunday
DATE ISSUED: 09/09/2017	TIME ISSUED: 1700
UNIT: MT-BDF	PREPARED BY: Tim Klukas FBAN <i>Tim Klukas</i>

INPUTS

WEATHER SUMMARY: Areas with dense smoke early in the morning with cloud cover up to 60%. Warmer and drier today. Low Haines and LAL1.

Temps: 85-91°F **RH:** 19-30%. **Winds:** **Ridges:** SW 15 to 20 mph late afternoon. **Valleys:** Upslope early at 3-5 mph increasing SW from 10-15 mph. Evening 15-20 mph southwest. ****Winds listed are at 20ft level.**

OUTPUTS – FIRE BEHAVIOR

GENERAL:

Today's forecasted winds are anticipated to be slower with a slight warming trend. Smoke in the morning and evening cloud cover buildup should reduce fire behavior potential on the Little Hogback Fire. Lower canyon bottoms in Divn Z and P should be sheltered. Exposed ridgetops have potential for some single tree torching.

Fire behavior outputs are calculated for maximum 20 foot winds of 15 to 20 mph as follows:

Spotting: 2 to .4 miles. **Flame lengths:** 3 to 8 ft. with surface spread. High fuel load timber 8 to 10 ft.

Grass and Sage: Rate of Spread .3 to .5 mi/hr. **Closed Timber Litter:** ROS .1 to .2 mi/hr.

Closed Timber brush: ROS .1 to .2 mi/hr. **Open timber and Grass:** ROS .5 mi/hr. to .75 mi/hr.

Forecasted Fuels and ERC: 1 hr. @ 7%, 10 hr @ 13%, 100 hr. @ 10% and 1,000 hr. @ 8%
ERC at Gird RAWs of 79 = 96 percentile. Probability of Ignition @50% with 40% shading.

SPECIFIC:

Goat Creek and Slide Rock Fires – Interior pockets may heat up to generate some smokes. Monitor for any for potential flare up around stump holes or deep duff in unburned islands.

Little Hogback Fire:

DIV N- Interior heat west of Beaver Dip site is anticipated to show some heat late in the burn period with no immediate threats. Heat in interior pockets should surface west of the Beaver Fill area.

DIV O- Isolated interior heat still showing up on interior ridgelines.

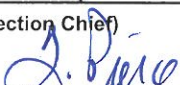
DIV P- Pockets of heat expected to surface along Ram Mountain and Mill Gulch. Surface spread would be limited in interior pockets of unburned fuel. Upslope or cross slope winds should put any torching embers back into the burned perimeter.

Div Z- Unburned pockets of fuel in Capron, Sheep, and Windlass Gulches will be less active in the burn period due to sheltering and cloud cover. Flare ups may occur. Embers should be traveling cross slope or upslope into burned fuels. Less potential today for spotting activity that could impact Rock Creek area resources.


AIR OPERATIONS: Early morning haze may limit operations. Inversion may break 1100 to 1200 hrs.

SAFETY: Quiet areas on fires are potentially hazardous. Maintain LCES through the day.

Division/Group Assignment List (ICS 204 WF)

1. Incident Name:			3.			
MEYERS SAPPHIRE COMPLEX			Branch:		Division/Group:	
2. Operational Period: 0700 - 2000			I		G	
Date/Time From: 09/10/2017 0700	SUN	Date/Time To: 09/10/2017 2000	SUN			
4. Operations Personnel						
OPERATIONS CHIEF		PETER MYERS, DAVID WALKER		DIVISION SUPERVISOR		
				JON MCLAUGHLIN, JON FRY (T)		
PLANNING OPS		JAMIE SCHWARTZ, JEREMY BRAND (T)		AIR OPERATIONS DIRECTOR		
				LYNNE HOWARD BART KICKLIGHTER (T)		
5. Resources Assigned this Period						
Strike Team / Task Force / Resource Designator	LWD	Leader	Number Persons	Drop Off PT./Time	Pick Up PT./Time	
TFLD		JEREMIAH HANKS	1	GOAT SPIKE /0700	GOAT SPIKE/2000	
TFLD		TONY BALLOU	1	GOAT SPIKE /0700	GOAT SPIKE/2000	
TFLD		KEITH HALLORAN	1	GOAT SPIKE /0700	GOAT SPIKE/2000	
HEQB		ARIC RASMUSSEN	1	GOAT SPIKE /0700	GOAT SPIKE/2000	
HEQB ((T))		DAVE MEGORDON	1	GOAT SPIKE /0700	GOAT SPIKE/2000	
O-529 HEQB (T)	09/23	JASON WALKER	1	GOAT SPIKE /0700	GOAT SPIKE/2000	
O-122 FAL 1 TIMBER TRAIL	09/18	SEITZ & CHITWOOD	2	GOAT SPIKE /0700	GOAT SPIKE/2000	
E-930 ENG3				GOAT SPIKE /0700	GOAT SPIKE/2000	
E-482 ENG3				GOAT SPIKE /0700	GOAT SPIKE/2000	
E-187 ENG6 NORTH IDAHO FIRE	09/15	JOHN LAUTENSLAGER	3	GOAT SPIKE /0700	GOAT SPIKE/2000	
E-70 DOZ2 MADDEN TRUCKING	09/15	MOSES MADDEN	2	GOAT SPIKE /0700	GOAT SPIKE/2000	
E-265 DOZ3	09/22	BRAD SMITH	1	GOAT SPIKE /0700	GOAT SPIKE/2000	
E-190 WTS2 CASTLE MTN FIRE	09/21	BOB BASTRUP	1	GOAT SPIKE /0700	GOAT SPIKE/2000	
E-192 WTS2 BIRD WATER #8	09/16	RAY CONGDON	1	GOAT SPIKE /0700	GOAT SPIKE/2000	
E-177 SKG2				GOAT SPIKE /0700	GOAT SPIKE/2000	
E-44 SKG3 SLACK	09/15	JAMIE SLACK	1	GOAT SPIKE /0700	GOAT SPIKE/2000	
E-243 EXCA T1 ST. ONGE W/LOWBOY	09/16	EVAN SIPPL	2	GOAT SPIKE /0700	GOAT SPIKE/2000	
E-262 EXCA T1 WESTERN MONTANA W/LOWBOY	09/19	WYATT LYONS	2	GOAT SPIKE /0700	GOAT SPIKE/2000	
E-242 LOG TRUCK JOE THOMAS	09/14	JOE THOMAS	1	GOAT SPIKE /0700	GOAT SPIKE/2000	
8. Division/Group Communication Summary						
Function	Channel	RX Frequency N/W	RX Tone/NAC	TX Frequency N/W	TX Tone/NAC	Mode
COMMAND	10	164.6750N	123.0	169.8125N	123.0	A
TACTICAL	1	168.0500N	123.0	168.0500N	123.0	A
AIR TO GROUND	14	169.1500N		169.1500N		A
AIR TO GROUND	15	169.0875N		169.0875N		A
AIR GUARD	16	168.6250N		168.6250N	110.9	
9. Prepared By (Resource Unit Leader)		Approved By (Planning Section Chief)		Date	Time	
DONNA THOMAS - RESL		TERRY PIERCE - PSC1 		09/09/2017	2000	


Division/Group Assignment List (ICS 204 WF)

1. Incident Name:			3.			
MEYERS SAPPHIRE COMPLEX			Branch:		Division/Group:	
2. Operational Period: 0700 - 2000			I		G	
Date/Time From: 09/10/2017 0700 SUN		Date/Time To: 09/10/2017 2000 SUN				
4. Operations Personnel						
OPERATIONS CHIEF		PETER MYERS, DAVID WALKER		DIVISION SUPERVISOR		JON MCLAUGHLIN, JON FRY (T)
PLANNING OPS		JAMIE SCHWARTZ, JEREMY BRAND (T)		AIR OPERATIONS DIRECTOR		LYNNE HOWARD BART KICKLIGHTER (T)
5. Resources Assigned this Period						
Strike Team / Task Force / Resource Designator		LWD	Leader	Number Persons	Drop Off PT./Time	Pick Up PT./Time
E-260 SELF LOADING LOG TRUCK		09/17	JUSTIN HULFORD	1	GOAT SPIKE /0700	GOAT SPIKE/2000
E-251 LOG LOADER BRYANT W/LOWBOY		09/14	BRYCE RASMUSSEN	2	GOAT SPIKE /0700	GOAT SPIKE/2000
E-263 LOG LOADER RUSS REED LOGGING W/LOWBOY		09/20	STEVE KINZEL	2	GOAT SPIKE /0700	GOAT SPIKE/2000
E-54 UTV		11/07			GOAT SPIKE /0700	GOAT SPIKE/2000
0-488 AEMT			TERRY WILLIAMSON	1	GOAT SPIKE /0700	GOAT SPIKE/2000
6. Control Operations/Work Assignments:						
Task: Implement suppression rehab on north and east ends of Goat Creek Fire. Mop up all potential threatening hot spots along the fire edge on the east side of Goat Creek.						
Purpose: Minimize acres burned on Division G and complete suppression rehab.						
End State: Execute full suppression fire management strategies using direct protection strategies. Complete fire suppression rehab while minimizing exposure and impacts to critical values at risk.						
7. Special Instructions:						
Complete maintenance of equipment as appropriate and maintain readiness to engage as directed by operations.						
8. Division/Group Communication Summary						
Function	Channel	RX Frequency N/W	RX Tone/NAC	TX Frequency N/W	TX Tone/NAC	Mode
COMMAND	10	164.6750N	123.0	169.8125N	123.0	A
TACTICAL	1	168.0500N	123.0	168.0500N	123.0	A
AIR TO GROUND	14	169.1500N		169.1500N		A
AIR TO GROUND	15	169.0875N		169.0875N		A
AIR GUARD	16	168.6250N		168.6250N	110.9	
9. Prepared By (Resource Unit Leader)			Approved By (Planning Section Chief)		Date	Time
DONNA THOMAS - RESL			TERRY PIERCE - PSC1 		09/09/2017	2000

Division/Group Assignment List (ICS 204 WF)

1. Incident Name:			3.			
MEYERS SAPPHIRE COMPLEX			Branch:		Division/Group:	
2. Operational Period: 0700 - 2000			II		N/O/P	
Date/Time From: 09/10/2017 0700 SUN			Date/Time To: 09/10/2017 2000 SUN			
4. Operations Personnel						
OPERATIONS CHIEF		PETER L MYERS DAVID P WALKER		DIVISION/GROUP SUPERVISOR		
				GREG TITUS		
PLANNING OPS		JAMIE SCHWARTZ, JEREMY BRAND (T)		AIR OPERATIONS DIRECTOR		
				LYNNE HOWARD BART KICKLIGHTER (T)		
5. Resources Assigned this Period						
Strike Team / Task Force / Resource Designator		LWD	Leader	Number Persons	Drop Off PT./Time	Pick Up PT./Time
O-495 TFLD		09/13	KEVIN PARRISH	1	MEYERS ICP/0700	MEYERS ICP/2000
O-388 TFLD (T)		09/08	LUCAS HARLEY	1	MEYERS ICP/0700	MEYERS ICP/2000
E-9 ENG3 HART VENTURES		09/09	CHRIS OLSEN	3	MEYERS ICP/0700	MEYERS ICP/2000
E-185 ENG3 WILDFIRE RESOURCES		09/13	REAGAN FARLEY	3	MEYERS ICP/0700	MEYERS ICP/2000
E-188 ENG6 XTREME (T)		09/19	KEITH BALKA	3	MEYERS ICP/0700	MEYERS ICP/2000
E-126 WTS1 HIGHSIERRA ENTERPRISE		09/12	DALE ISEMAN	1	MEYERS ICP/0700	MEYERS ICP/2000
E-125 WTT2 R&J GRANGER		09/10	RON GRANGER	1	MEYERS ICP/0700	MEYERS ICP/2000
E-132 WTS2 PRIMMER TENDER		09/14	REBECCA DAUL	1	MEYERS ICP/0700	MEYERS ICP/2000
E-48 ENG4 ALDER CREEK		09/09	ROYD CARR	3	MEYERS ICP/0700	MEYERS ICP/2000
E-12 ENG6 CEDAR FIRE		09/12	TED HUNTER	3	MEYERS ICP/0700	MEYERS ICP/2000
E-194 WTS2 BIRD WATER #6		09/16	TODD BENEDICT	1	MEYERS ICP/0700	MEYERS ICP/2000
E-191 WTS2		09/16	MIKE THOMAS	1	MEYERS ICP/0700	MEYERS ICP/2000
E-179 SKDS WILDLAND FIREFIGHTERS		09/17	LARRY PEASE	2	MEYERS ICP/0700	MEYERS ICP/2000
E-182 SKDS ATTACK #3		09/13	CHRIS DESORCY	2	MEYERS ICP/0700	MEYERS ICP/2000
O-218 EMTF		09/13	JOHNNY HYDE	1	MEYERS ICP/0700	MEYERS ICP/2000
O-445 SOF2		09/12	CRAIG COWIE	1	MEYERS ICP/0700	MEYERS ICP/2000
6. Control Operations/Work Assignments:						
Task: Patrol and mop-up along fire edge. Provide support to other Divisions as necessary. Work with READ to identify suppression repair needs.						
8. Division/Group Communication Summary						
Function	Channel	RX Frequency N/W	RX Tone/NAC	TX Frequency N/W	TX Tone/NAC	Mode
COMMAND	9	166.3375N	123.0	170.3875N	123.0	A
TACTICAL	3	168.6000N	123.0	168.6000N	123.0	A
AIR TO GROUND	14	169.1500N		169.1500N		A
AIR TO GROUND	15	169.0875N		169.0875N		A
AIR GUARD	16	168.6250N		168.6250N	110.9	
9. Prepared By (Resource Unit Leader)		Approved By (Planning Section Chief)		Date		Time
DONNA THOMAS - RESL		TERRY PIERCE - PSC1 <i>T. Pierce</i>		09/09/2017		2000

Division/Group Assignment List (ICS 204 WF)

1. Incident Name:			3.			
MEYERS SAPPHIRE COMPLEX			II	Division/Group: N/O/P		
2. Operational Period: 0700 - 2000						
Date/Time From:	09/10/2017 0700	SUN	Date/Time To:	09/10/2017 2000	SUN	
4. Operations Personnel						
OPERATIONS CHIEF	PETER L MYERS DAVID P WALKER		DIVISION/GROUP SUPERVISOR	GREG TITUS		
PLANNING OPS	JAMIE SCHWARTZ, JEREMY BRAND (T)		AIR OPERATIONS DIRECTOR	LYNNE HOWARD BART KICKLIGHTER (T)		
6. Control Operations/Work Assignments:						
Purpose: Minimize acres burned and impacts to resources at risk.						
End State: Execute full suppression. Keep fire north of Rock Creek and west of upper Willow Creek.						
7. Special Instructions:						
Identify and remove excess equipment and back haul as appropriate.						
8. Division/Group Communication Summary						
Function	Channel	RX Frequency N/W	RX Tone/NAC	TX Frequency N/W	TX Tone/NAC	Mode
COMMAND	9	166.3375N	123.0	170.3875N	123.0	A
TACTICAL	3	168.6000N	123.0	168.6000N	123.0	A
AIR TO GROUND	14	169.1500N		169.1500N		A
AIR TO GROUND	15	169.0875N		169.0875N		A
AIR GUARD	16	168.6250N		168.6250N	110.9	
9. Prepared By (Resource Unit Leader)		Approved By (Planning Section Chief)		Date	Time	
DONNA THOMAS - RESL		TERRY PIERCE - PSC1 		09/09/2017	2000	

Division/Group Assignment List (ICS 204 WF)

1. Incident Name:			3.				
MEYERS SAPPHIRE COMPLEX			II	Branch:		Division/Group:	
2. Operational Period: 0700 - 2000				STAGING - LIL HOGBACK			
Date/Time From: 09/10/2017 0700 SUN	Date/Time To: 09/10/2017 2000 SUN						
4. Operations Personnel							
OPERATIONS CHIEF		PETER MYERS DAVID WALKER		BRANCH DIRECTOR		JEFF SCHARDT	
PLANNING OPS		JAMIE SCHWARTZ JEREMY BRAND (T)		AIR OPERATIONS DIRECTOR		LYNNE HOWARD (T) BART KICKLIGHTER (T)	
5. Resources Assigned this Period							
Strike Team / Task Force / Resource Designator	LWD	Leader	Number Persons	Drop Off PT./Time	Pick Up PT./Time		
E-79 WTT2 MISSION MTN STAR	09/22	SCOTT HARMON	1	MEYERS ICP/0700	MEYERS ICP/2000		
E-232 EXCA T2 WELCH BROS W/ LOWBOY	09/10	JIM DAVIS	2	MEYERS ICP/0700	MEYERS ICP/2000		
E-258 EXCA	09/16	BILL NELSON	2	MEYERS ICP/0700	MEYERS ICP/2000		
E-261 TRACK HOE W/ LOWBOY LITTLE BEAR CONSTRUCTION	09/20	MIKE HILL	1	MEYERS ICP/0700	MEYERS ICP/2000		
E-267 DUMP TRUCK ALL TERRAIN TRUCKING	09/21	TERRELL THOMAS	1	MEYERS ICP/0700	MEYERS ICP/2000		
E-119 UTV OUTBACK FIRE 747318				MEYERS ICP/0700	MEYERS ICP/2000		
E-3 AMBU THREE RIVERS	10/01	WESTGARD & HAGESTAD	2	MEYERS ICP/0700	MEYERS ICP/2000		
6. Control Operations/Work Assignments:							
7. Special Instructions:							
Complete maintenance of equipment as appropriate and maintain readiness to engage as directed by operations.							
8. Division/Group Communication Summary							
Function	Channel	RX Frequency N/W	RX Tone/NAC	TX Frequency N/W	TX Tone/NAC	Mode	
COMMAND	8	169.5375N	123.0	164.7125N	123.0	A	
COMMAND	9	166.3375N	123.0	170.3875N	123.0	A	
TACTICAL	4	168.7250N	123.0	168.7250N	123.0	A	
AIR TO GROUND	14	169.1500N		169.1500N		A	
AIR TO GROUND	15	169.0875N		169.0875N		A	
AIR GUARD	16	168.6250N		168.6250N	110.9		
9. Prepared By (Resource Unit Leader)		Approved By (Planning Section Chief)		Date		Time	
DONNA THOMAS - RESL		TERRY PIERCE - PSC1 <i>T. Pierce</i>		09/09/2017		2000	

Division/Group Assignment List (ICS 204 WF)

1. Incident Name:			3.			
MEYERS SAPPHIRE COMPLEX			II		STRUCTURE	
2. Operational Period: 0700 - 2000						
Date/Time From: 09/10/2017 0700 SUN		Date/Time To: 09/10/2017 2000 SUN				
4. Operations Personnel						
OPERATIONS CHIEF		PETER MYERS DAVID WALKER		DIVISION/GROUP SUPERVISOR		ALISON COONS
PLANNING OPS		JAMIE SCHWARTZ JEREMY BRAND (T)		AIR OPERATIONS DIRECTOR		LYNNE HOWARD BART KICKLIGHTER (T)
5. Resources Assigned this Period						
Strike Team / Task Force / Resource Designator		LWD	Leader	Number Persons	Drop Off PT./Time	Pick Up PT./Time
E-234.1 TFLD (T)		09/16	JOSH STROHMEYER	1	MEYERS ICP /0700	MEYERS ICP /2000
E-46 ENG3 HART VENTURES 414253		09/10	WYATT LAWRENCE	3	MEYERS ICP /0700	MEYERS ICP /2000
E-45 ENG4 INLAND FOREST MGMT.		09/12	TERRY MCGOVERN	3	MEYERS ICP /0700	MEYERS ICP /2000
E-124 ENG4 OUTBACK FIREFIGHTING		09/21	KARL PESO	3	MEYERS ICP /0700	MEYERS ICP /2000
E-189 ENG4 NATIONAL WILDLAND FIRE		09/19	LEENKUN BACA	3	MEYERS ICP /0700	MEYERS ICP /2000
E-133 WTS2 BUTLER ENTERPRISES		09/12	NICK DOLE	1	MEYERS ICP /0700	MEYERS ICP /2000
6. Control Operations/Work Assignments:						
Protect structures in Upper Willow Creek drainage. Maintain structure protection equipment of Upper Willow and Marshall Creek structures. Provide support to adjacent Divisions as needed. Maintain IA readiness, backfill any structure protection needs with Engines from adjacent divisions.						
7. Special Instructions:						
Identify and map structures. Work with liaison Officer to advise and coordinate with with potentially affected private landowners. Gather GPS tracks of all constructed line in Division and turn into the Situation Unit.						
Specific hazard mitigations:						
<ul style="list-style-type: none"> • Review the Wildland Urban interface "watch out" situations on page 12 of the IRPG. • For IA, establish LCES and determine trigger points. 						
8. Division/Group Communication Summary						
Function	Channel	RX Frequency N/W	RX Tone/NAC	TX Frequency N/W	TX Tone/NAC	Mode
COMMAND	8	169.5375N	123.0	164.7125N	123.0	A
COMMAND	9	166.3375N	123.0	170.3875N	123.0	A
TACTICAL	4	168.7250N	123.0	168.7250N	123.0	A
AIR TO GROUND	14	169.1500N		169.1500N		A
AIR TO GROUND	15	169.0875N		169.0875N		A
AIR GUARD	16	168.6250N		168.6250N	110.9	
9. Prepared By (Resource Unit Leader)			Approved By (Planning Section Chief)		Date	Time
DONNA THOMAS - RESL			TERRY PIERCE - PSC1 <i>T. Pierce</i>		09/09/2017	2000

Division/Group Assignment List (ICS 204 WF)

1. Incident Name:			3.			
MEYERS SAPPHIRE COMPLEX			II		Z	
2. Operational Period: 0700 - 2000						
Date/Time From: 09/10/2017 0700 SUN		Date/Time To: 09/10/2017 2000 SUN				
4. Operations Personnel						
OPERATIONS CHIEF		PETER MYERS DAVID WALKER		DIVISION/GROUP SUPERVISOR		ALISON COONS
PLANNING OPS		JAMIE SCHWARTZ JEREMY BRAND (T)		AIR OPERATIONS DIRECTOR		LYNNE HOWARD BART KICKLIGHTER (T)
5. Resources Assigned this Period						
Strike Team / Task Force / Resource Designator		LWD	Leader	Number Persons	Drop Off PT./Time	Pick Up PT./Time
C-60 CUSTER GALLATIN T2IA		09/11	DAVE DAY	20	MEYERS ICP/0700	MEYERS ICP/2000
O-459 TFLD		09/13	PATRICK KIERAN	1	MEYERS ICP/0700	MEYERS ICP/2000
O-460 TFLD (T)		09/13	TODD AYRES	1	MEYERS ICP/0700	MEYERS ICP/2000
E-33 ENG4 DRAGON FIGHTERS E-41 (T)		09/16	LEVI DUFFORD	3	MEYERS ICP/0700	MEYERS ICP/2000
E-30 ENG6 RED TRUCK WILDFIRE		09/16	RAY BROWN	3	MEYERS ICP/0700	MEYERS ICP/2000
E-234 ENG6 IL-MPF		09/16	SHAUN TRABADO	4	MEYERS ICP/0700	MEYERS ICP/2000
E-122 GRIZ ONE ENG6		09/21	BOB RAADE	3	MEYERS ICP/0700	MEYERS ICP/2000
O-457 EMPF		09/19	REX NIELSEN	1	MEYERS ICP/0700	MEYERS ICP/2000
O-462 SOF2		09/15	GARY SEXTON	1	MEYERS ICP/0700	MEYERS ICP/2000
6. Control Operations/Work Assignments:						
Task: Continue mop-up and cold trail fire edge from division break to H25. Utilize aircraft, engines and fire personnel to hold fire north and east of Rock Creek Road. Provide protection to structures.						
Purpose: Minimize acres burned and impacts to resources at risk.						
End State: Execute full suppression. Keep fire east of Rock Creek and minimize impacts to values at risk.						
7. Special Instructions:						
Identify and remove excess equipment and back haul as appropriate.						
8. Division/Group Communication Summary						
Function	Channel	RX Frequency N/W	RX Tone/NAC	TX Frequency N/W	TX Tone/NAC	Mode
COMMAND	8	169.5375N	123.0	164.7125N	123.0	A
TACTICAL	2	168.2000N	123.0	168.2000N	123.0	A
AIR TO GROUND	14	169.1500N		169.1500N		A
AIR TO GROUND	15	169.0875N		169.0875N		A
AIR GUARD	16	168.6250N		168.6250N	110.9	
9. Prepared By (Resource Unit Leader)			Approved By (Planning Section Chief)		Date	Time
DONNA THOMAS - RESL			TERRY PIERCE - PSC1 <i>J. Pierce</i>		09/09/2017	2000

Division/Group Assignment List (ICS 204 WF)

1. Incident Name:			3.			
MEYERS			Branch:		Division/Group:	
2. Operational Period: NIGHT			II		NIGHT SHIFT	
Date/Time From: 09/10/2017 1800 SUN		Date/Time To: 09/11/2017 0700 MON				
4. Operations Personnel						
OPERATIONS CHIEF		PETER MYERS DAVID WALKER		DIVISION SUPERVISOR BERT PLANTE		
PLANNING OPS		JAMIE SCHWARTZ JEREMY BRAND (T)		AIR OPERATIONS DIRECTOR LYNNE HOWARD		
5. Resources Assigned this Period						
Strike Team / Task Force / Resource Designator		LWD	Leader	Number Persons	Drop Off PT./Time	Pick Up PT./Time
E-26 ENG4 FIRECO		09/22	CASEY RANKIN	3	MEYERS ICP/1800	MEYERS ICP/0700
E-43 ENG6 TORCH FIRE 62		09/11	BOB MILLER	3	MEYERS ICP/1800	MEYERS ICP/0700
E-44 ENG6 TORCH FIRE 63		09/14	TRINITY KRIVANEC	3	MEYERS ICP/1800	MEYERS ICP/0700
6. Control Operations/Work Assignments:						
Task: Patrol and mop up threats to resources along Rock Creek. Purpose: Minimize area boundary and impacts to resources at risk. End State: Execute full suppression.						
7. Special Instructions:						
8. Division/Group Communication Summary						
Function	Channel	RX Frequency N/W	RX Tone/NAC	TX Frequency N/W	TX Tone/NAC	Mode
COMMAND						
TACTICAL						
LOGISTICS						
AIR TO GROUND						
9. Prepared By (Resource Unit Leader)			Approved By (Planning Section Chief)		Date	Time
DONNA THOMAS - RESL			MARG OLSON - PSC1 <i>J. Reice</i>		09/09/2017	2000

Division/Group Assignment List (ICS 204 WF)

1. Incident Name:			3.			
MEYERS SAPPHIRE COMPLEX			Branch:		Division/Group:	
2. Operational Period: 0700 - 2000			III		A/E	
Date/Time From: 09/10/2017 0700	SUN	Date/Time To: 09/10/2017 2000	SUN			
4. Operations Personnel						
OPERATIONS SECTION CHIEF		PETE MYERS DAVID WALKER		DIVISION/GROUP SUPERVISOR	JOE BURGETT	
PLANNING OPS		JAMIE SCHWARTZ, JEREMY BRAND (T)		AIR OPERATIONS DIRECTOR	LYNNE HOWARD BART KICKLIGHTER (T)	
5. Resources Assigned this Period						
Strike Team / Task Force / Resource Designator	LWD	Leader	Number Persons	Drop Off PT./Time	Pick Up PT./Time	
O-416 TFLD	09/11	JOHN ASHCRAFT	1	MEYERS ICP /0700	MEYERS ICP/2000	
O-247 MILLER CREEK MODULE 2 FAL1	09/21	VINCE NUZZO	2	MEYERS ICP /0700	MEYERS ICP/2000	
E-333 ENG4 INLAND FOREST	09/19	JOHN AILPORT	2	MEYERS ICP /0700	MEYERS ICP/2000	
E-39 ENG6 SCOTTS FIRE	09/14	DAVID HENDERSON	3	MEYERS ICP /0700	MEYERS ICP/2000	
E-304 ENG6 CARIBOU TARGHEE 632	09/12	AUSTIN NIELSON	4	MEYERS ICP /0700	MEYERS ICP/2000	
E-41 ENG6 BROCKWAY		ALLEN BROCKWAY		MEYER ICP/0700	MEYER ICP/2000	
E-63 ENG6 HIGH DESERT	09/16	TOM HANKS	2	MEYER ICP/0700	MEYER ICP/2000	
NATIONAL GUARD TASK FORCE	09/13	PHINNEY/STAMPER	2	MEYERS ICP /0700	MEYERS ICP/2000	
E-312 ENGINE 50 ENG 50	09/13	CHRISTOPHER LEUCK	4	MEYERS ICP /0700	MEYERS ICP/2000	
E-313 ENGINE 50 ENG 51	09/13	DAVID LAMBERS	4	MEYERS ICP /0700	MEYERS ICP/2000	
E-314 TENDER 50 WT2	09/13	SARA STAFFORD	2	MEYERS ICP /0700	MEYERS ICP/2000	
E-315 TENDER 51 WT2	09/13	MATHEW MYSCHEWITZ	2	MEYERS ICP /0700	MEYERS ICP/2000	
O-548 SOF2	09/15	DAVID CARTER	1	MEYERS ICP /0700	MEYERS ICP/2000	
O-493 AEMT	09/11	BOBBIE BINK	1	MEYERS ICP /0700	MEYERS ICP/2000	
6. Control Operations/Work Assignments:						
<p>Task: Implement structure protection plan at Moose Lake Subdivision, Lolo Camp, and Helen's Cabin. Mop-up all spots on the east side of road 5106. Mop up previous burnout operation around DP1.</p> <p>Purpose: To secure structures at Moose Lake Subdivision, Lolo Camp and Helen's Cabin.</p> <p>End State: Protect values at risk and minimize impacts/threats to the Moose Lake Subdivision, Lolo Camp and Helen's Cabin.</p>						
8. Division/Group Communication Summary						
Function	Channel	RX Frequency N/W	RX Tone/NAC	TX Frequency N/W	TX Tone/NAC	Mode
COMMAND	9	168.5750N	114.8	173.6750N	114.8	A
TACTICAL	1	168.0500N	114.8	168.0500N	114.8	A
AIR TO GROUND	14	169.2000N		169.2000N		A
AIR TO GROUND	15	164.7500N		164.7500N		A
AIR GUARD	16	168.6250N		168.6250N	110.9	A
9. Prepared By (Resource Unit Leader)		Approved By (Planning Section Chief)		Date	Time	
RICH AUBUCHON - RESL		TERRY PIERCE - PSC1 <i>J. Pierce</i>		09/09/2017	2000	

Division/Group Assignment List (ICS 204 WF)

1. Incident Name:			3.			
MEYERS SAPPHIRE COMPLEX			III		A/E	
2. Operational Period: 0700 - 2000						
Date/Time From: 09/10/2017 0700 SUN		Date/Time To: 09/10/2017 2000 SUN				
4. Operations Personnel						
OPERATIONS SECTION CHIEF		PETE MYERS DAVID WALKER		DIVISION/GROUP SUPERVISOR		JOE BURGETT
PLANNING OPS		JAMIE SCHWARTZ, JEREMY BRAND (T)		AIR OPERATIONS DIRECTOR		LYNNE HOWARD BART KICKLIGHTER (T)
6. Control Operations/Work Assignments:						
7. Special Instructions:						
Refer to the 220 for aerial water use practices to prevent the spread of aquatic invasives.						
Saw out Road 5106 from DP 1 to DP 19.						
Identify IA resources within division.						
8. Division/Group Communication Summary						
Function	Channel	RX Frequency N/W	RX Tone/NAC	TX Frequency N/W	TX Tone/NAC	Mode
COMMAND	9	168.5750N	114.8	173.6750N	114.8	A
TACTICAL	1	168.0500N	114.8	168.0500N	114.8	A
AIR TO GROUND	14	169.2000N		169.2000N		A
AIR TO GROUND	15	164.7500N		164.7500N		A
AIR GUARD	16	168.6250N		168.6250N	110.9	A
9. Prepared By (Resource Unit Leader)			Approved By (Planning Section Chief)		Date	Time
RICH AUBUCHON - RESL			TERRY PIERCE - PSC1 <i>J. Pierce</i>		09/09/2017	2000

Division/Group Assignment List (ICS 204 WF)

1. Incident Name:				3.			
MEYERS SAPPHIRE COMPLEX				Branch:		Division/Group:	
2. Operational Period: 0700 - 2000				III		I	
Date/Time From: 09/10/2017 0700 SUN		Date/Time To: 09/10/2017 2000 SUN					
4. Operations Personnel							
OPERATIONS CHIEF		PETER MYERS DAVID WALKER		DIVISION/GROUP SUPERVISOR		JEREMY BRAND JON RUPP (T)	
PLANNING OPS		JAMIE SCHWARTZ JEREMY BRAND (T)		AIR OPERATIONS DIRECTOR		LYNNE HOWARD BART KICKLIGHTER (T)	
SAFETY OFFICER		MIKE COOK, BRAD LIDELL					
5. Resources Assigned this Period							
Strike Team / Task Force / Resource Designator		LWD	Leader	Number Persons	Drop Off PT./Time	Pick Up PT./Time	
E-289 GIST ENTERPRISES ENG3			DONALD WOOD		SPIKE/0700	SPIKE/2000	
E-340 VERNON E26 ENG3		09/12	JERALD WHIPPLE	3	EAST FORK SPIKE/0700	EAST FORK SPIKE/2000	
E-288 HOTSPOT FIRE ENG5		09/20	CATHY PALIN	3	EAST FORK SPIKE/0700	EAST FORK SPIKE/2000	
E-343 MOUNTAIN CAMEL ENG5 (T)		09/12	RAY GOVERT	3	EAST FORK SPIKE/0700	EAST FORK SPIKE/2000	
E-268 ROCKY MOUNTAIN TIMBER ENG6		09/13	BRIAN CAHOON	3	EAST FORK SPIKE/0700	EAST FORK SPIKE/2000	
E-341 CPTPA E16ENG6		09/09	DOUG COURSON	4	EAST FORK SPIKE/0700	EAST FORK SPIKE/2000	
E-342 METAL WORKS ENG6		09/21	EUGENE WEASEL	3	EAST FORK SPIKE/0700	EAST FORK SPIKE/2000	
O-663 HEQB (T)		09/22	MIKE NOVA	1	EAST FORK SPIKE/0700	EAST FORK SPIKE/2000	
E-134 MELROSE VFD WTT2		09/10	GEORGE GOODY	1	EAST FORK SPIKE/0700	EAST FORK SPIKE/2000	
E-59 CC STACKING DOZ2		09/12	CRAIG CORNELL	1	EAST FORK SPIKE/0700	EAST FORK SPIKE/2000	
E-1 CC STACKING DOZ3		09/16	BILL WALKER	1	EAST FORK SPIKE/0700	EAST FORK SPIKE/2000	
E-5 SHERRILL LOGGING FELLER BUNCHER		09/15	JESSE SHERRILL	1	EAST FORK SPIKE/0700	EAST FORK SPIKE/2000	
E-136 AC LOGGING SKD2		09/17	ALAN CONOVER	1	EAST FORK SPIKE/0700	EAST FORK SPIKE/2000	
E-137 INTERMOUNTAIN SKD2		09/16	WILLIAM JOHNSON	1	EAST FORK SPIKE/0700	EAST FORK SPIKE/2000	
8. Division/Group Communication Summary							
Function	Channel	RX Frequency N/W	RX Tone/NAC	TX Frequency N/W	TX Tone/NAC	Mode	
COMMAND	9	168.5750N	114.8	173.6750N	114.8	A	
TACTICAL	3	168.6000N	114.8	168.6000N	114.8	A	
AIR TO GROUND	14	169.2000N		169.2000N		A	
AIR TO GROUND	15	164.7500N		164.7500N		A	
AIR GUARD	16	168.6250N		168.6250N	110.9	A	
9. Prepared By (Resource Unit Leader)			Approved By (Planning Section Chief)			Date	Time
RICH AUBUCHON - RESL			TERRY PIERCE - PSC1 <i>J. Pierce</i>			09/09/2017	2000


Division/Group Assignment List (ICS 204 WF)

1. Incident Name:				3.		
MEYERS SAPPHIRE COMPLEX				III	Branch:	
2. Operational Period: 0700 - 2000					Division/Group:	
Date/Time From: 09/10/2017 0700 SUN		Date/Time To: 09/10/2017 2000 SUN		I		
4. Operations Personnel						
OPERATIONS CHIEF		PETER MYERS DAVID WALKER		DIVISION/GROUP SUPERVISOR		JEREMY BRAND JON RUPP (T)
PLANNING OPS		JAMIE SCHWARTZ JEREMY BRAND (T)		AIR OPERATIONS DIRECTOR		LYNNE HOWARD BART KICKLIGHTER (T)
SAFETY OFFICER		MIKE COOK, BRAD LIDELL				
5. Resources Assigned this Period						
Strike Team / Task Force / Resource Designator		LWD	Leader	Number Persons	Drop Off PT./Time	Pick Up PT./Time
E-142 TIMBER TASK FORCE					EAST FORK SPIKE/0700	EAST FORK SPIKE/2000
E-142 HE TASK FORCE LEADER		09/14	JEFF HOLLIDAY	1	EAST FORK SPIKE/0700	EAST FORK SPIKE/2000
E-142 TIMBER FELLER BUNCHER		09/11	TONY STEVENS	1	EAST FORK SPIKE/0700	EAST FORK SPIKE/2000
E-142 TIMBER DOZ2		09/14	BRAD MORIGEAU	1	EAST FORK SPIKE/0700	EAST FORK SPIKE/2000
E-142 TIMBER SKG2		09/14	KEITH BRANDEMIHL	1	EAST FORK SPIKE/0700	EAST FORK SPIKE/2000
E-142 TIMBER SKD2		09/20	CHASE STOKER	1	EAST FORK SPIKE/0700	EAST FORK SPIKE/2000
E-142 BLACK DIAMOND LOWBOY		09/18	JREMY FLICK	1	EAST FORK SPIKE/0700	EAST FORK SPIKE/2000
E-142 K-COMPANY LOWBOY		09/18	ZAC BUGLI	1	EAST FORK SPIKE/0700	EAST FORK SPIKE/2000
E-142 B MORE LOWBOY		09/17	JASON BANGEN	1	EAST FORK SPIKE/0700	EAST FORK SPIKE/2000
TFLD		09/17	RYAN WOIRHAYE	1	EAST FORK SPIKE/0700	EAST FORK SPIKE/2000
TFLD (T)		09/08	DEREK WITTENBERG	1	EAST FORK SPIKE/0700	EAST FORK SPIKE/2000
C-51 LEWIS & CLARK IHC		09/13	MATT HOLMSTROM	21	EAST FORK SPIKE/0700	EAST FORK SPIKE/2000
C-44 GANNETT GLACIER T2IA		09/10	JOSHUA DANIEL LEUTZINGER	21	EAST FORK SPIKE/0700	EAST FORK SPIKE/2000
E-182 ROCKY MOUNTIAN FIRE ENG3		09/14	RON GENTRY	3	EAST FORK SPIKE/0700	EAST FORK SPIKE/2000
E-289 GIST ENTERPRISES ENG3		09/19	DONALD WOOD	3	EAST FORK	EAST FORK
8. Division/Group Communication Summary						
Function	Channel	RX Frequency N/W	RX Tone/NAC	TX Frequency N/W	TX Tone/NAC	Mode
COMMAND	9	168.5750N	114.8	173.6750N	114.8	A
TACTICAL	3	168.6000N	114.8	168.6000N	114.8	A
AIR TO GROUND	14	169.2000N		169.2000N		A
AIR TO GROUND	15	164.7500N		164.7500N		A
AIR GUARD	16	168.6250N		168.6250N	110.9	A
9. Prepared By (Resource Unit Leader)			Approved By (Planning Section Chief)		Date	Time
RICH AUBUCHON - RESL			TERRY PIERCE - PSC1 <i>T. Pierce</i>		09/09/2017	2000


Division/Group Assignment List (ICS 204 WF)

1. Incident Name:				3.			
MEYERS SAPPHIRE COMPLEX				III	Branch:		I
2. Operational Period: 0700 - 2000					Division/Group:		
Date/Time From: 09/10/2017 0700 SUN		Date/Time To: 09/10/2017 2000 SUN					
4. Operations Personnel							
OPERATIONS CHIEF		PETER MYERS DAVID WALKER		DIVISION/GROUP SUPERVISOR		JEREMY BRAND JON RUPP (T)	
PLANNING OPS		JAMIE SCHWARTZ JEREMY BRAND (T)		AIR OPERATIONS DIRECTOR		LYNNE HOWARD BART KICKLIGHTER (T)	
SAFETY OFFICER		MIKE COOK, BRAD LIDELL					
5. Resources Assigned this Period							
Strike Team / Task Force / Resource Designator		LWD	Leader	Number Persons	Drop Off PT./Time	Pick Up PT./Time	
E-229 TIMBER SOLUTIONS FORW		09/10	PAUL LOVAAS	1	EAST FORK SPIKE/0700	EAST FORK SPIKE/2000	
E-253 TIMBER TRAIL EXCA		09/19	MIKE THORSON	1	EAST FORK SPIKE/0700	EAST FORK SPIKE/2000	
E-62 FLANAGAN FORWARDER		09/19	DALE FLANAGAN	1	EAST FORK SPIKE/0700	EAST FORK SPIKE/2000	
E-129 FLANAGAN FELLER BUNCHER		09/19	JAY FLANAGAN	1	EAST FORK SPIKE/0700	EAST FORK SPIKE/2000	
E-296 RAC LOGGING CHIPPER		09/11	RON COOPER	1	EAST FORK SPIKE/0700	EAST FORK SPIKE/2000	
O-321 EMTF		09/12	CHRIS NOON	1	EAST FORK SPIKE/0700	EAST FORK SPIKE/2000	
O-537 EMTB		09/15	OLENA GARTNER	1	EAST FORK SPIKE/0700	EAST FORK SPIKE/2000	
6. Control Operations/Work Assignments:							
Task: In Billy Springer Memorial and Bonanza Subdivisions, continue structure protection measures. Finish and improve hand and mechanical line around subdivisions and threatened structures.							
Purpose: To secure structures and private property in the Bill Springer Memorial and Bonanza Subdivisions.							
End State: To protect values at risk and minimize impacts/threats in the Billy Springer Memorial and Bonanza Subdivisions.							
7. Special Instructions:							
Refer to the 220 for aerial water use practices to prevent the spread of aquatic invasives.							
Identify IA resources within division.							
8. Division/Group Communication Summary							
Function	Channel	RX Frequency N/W	RX Tone/NAC	TX Frequency N/W	TX Tone/NAC	Mode	
COMMAND	9	168.5750N	114.8	173.6750N	114.8	A	
TACTICAL	3	168.6000N	114.8	168.6000N	114.8	A	
AIR TO GROUND	14	169.2000N		169.2000N		A	
AIR TO GROUND	15	164.7500N		164.7500N		A	
AIR GUARD	16	168.6250N		168.6250N	110.9	A	
9. Prepared By (Resource Unit Leader)			Approved By (Planning Section Chief)		Date	Time	
RICH AUBUCHON - RESL			TERRY PIERCE - PSC1 <i>T. Pierce</i>		09/09/2017	2000	

Division/Group Assignment List (ICS 204 WF)

1. Incident Name:			3.			
MEYERS SAPPHIRE COMPLEX			Branch:		Division/Group:	
2. Operational Period: 0700 - 2000			III		K	
Date/Time From: 09/10/2017 0700 SUN			Date/Time To: 09/10/2017 2000 SUN			
4. Operations Personnel						
OPERATIONS CHIEF		PETER MYERS DAVID WALKER		DIVISION/GROUP SUPERVISOR	SHANE STURGILL	
PLANNING OPS		JAMIE SCHWARTZ JEREMY BRAND (T)		AIR OPERATIONS DIRECTOR	LYNNE HOWARD, BART KICKLIGHTER (T)	
5. Resources Assigned this Period						
Strike Team / Task Force / Resource Designator	LWD	Leader	Number Persons	Drop Off PT./Time	Pick Up PT./Time	
O-396 TFLD	09/09	JONATHAN DUNBAR	1	MEYERS ICP/0700	MEYERS ICP/2000	
C-56 BITTERROOT IHC	09/15	MATTHEW MICHALISZYN	21	MEYERS ICP/0700	MEYERS ICP/2000	
E-339 - PERKINS TENDERS, - 347018 ENG3	09/10	SHAWN BETTERS	3	MEYERS ICP/0700	MEYERS ICP/2000	
E-305 NORTHWEST FIRE 0710 ENG6	09/14	MARCUS JANES	3	MEYERS ICP/0700	MEYERS ICP/2000	
E-86 AEGIS ENG6	09/14	ROY VARNEY	3	MEYERS ICP/0700	MEYERS ICP/2000	
E-306 GREEN VALLEY 150 ENG6	09/14	MICHAEL CARRAFA	3	MEYERS ICP/0700	MEYERS ICP/2000	
E-143 MORANVILLE WTT2	09/21	JIM MORANVILLE	1	MEYERS ICP/0700	MEYERS ICP/2000	
E-287 CASTLE MOUNTAIN ENG3	09/07	RHONDINA TSOSIE	3	MEYERS ICP/0700	MEYERS ICP/2000	
E-307 CENTRAL AZ FIRE 548 ENG6	09/14	MATHEW MAYHALL	3	MEYERS ICP/0700	MEYERS ICP/2000	
O-246 MILLER CREEK MODULE 3 FAL1	09/19	DEREK POFF	2	MEYERS ICP/0700	MEYERS ICP/2000	
O-563 EMPF	09/15	MELANIE R MILLER	1	MEYERS ICP/0700	MEYERS ICP/2000	
O-415 SOF2 (T)	09/18	WESTON BURCH	1	MEYERS ICP/0700	MEYERS ICP/2000	
6. Control Operations/Work Assignments:						
Task: Continue to evaluate potential opportunities, for point protection, conduct burnout operations where feasible.						
Purpose: To secure structures and private property in the Frog Pond Basin.						
End State: Protect values at risk and minimize impacts and threats to Frog Pond Basin while minimizing exposure and impacts to critical values at risk.						
7. Special Instructions:						
8. Division/Group Communication Summary						
Function	Channel	RX Frequency N/W	RX Tone/NAC	TX Frequency N/W	TX Tone/NAC	Mode
COMMAND	9	168.5750N	114.8	173.6750N	114.8	A
TACTICAL	2	168.2000N	114.8	168.2000N	114.8	A
AIR TO GROUND	14	169.2000N		169.2000N		A
AIR TO GROUND	15	164.7500N		164.7500N		A
AIR GUARD	16	168.6250N		168.6250N	110.9	A
9. Prepared By (Resource Unit Leader)		Approved By (Planning Section Chief)		Date	Time	
RICH AUBUCHON - RESL		TERRY PIERCE - PSC1 		09/09/2017	2000	

Division/Group Assignment List (ICS 204 WF)

1. Incident Name:			3.			
MEYERS SAPPHIRE COMPLEX			Branch:		Division/Group:	
2. Operational Period: 0700 - 2000			III		R/T	
Date/Time From: 09/10/2017 0700 SUN	Date/Time To: 09/10/2017 2000 SUN					
4. Operations Personnel						
OPS SECTION CHIEF		PETER MYERS, DAVID WALKER		DIVISION/GROUP SUPERVISOR		
				BRIAN BROWNING JACOB JERESEK (T)		
PLANNING OPS		JAMIE SCHWARTZ, JEREMY BRAND (T)		AIR OPERATIONS DIRECTOR		
				LYNN HOWARD BART KICKLIGHTER (T)		
5. Resources Assigned this Period						
Strike Team / Task Force / Resource Designator	LWD	Leader	Number Persons	Drop Off PT./Time	Pick Up PT./Time	
B-D T2IA	09/19	QUIGLEY/DICKINSON (T)	20	MEYERS ICP/0700	MEYERS ICP/2000	
E-63 AC LOGGING SKG3	09/21	GUY BUYAN		MEYER ICP/0700	MEYER ICP/2000	
E-235 CASTLE MOUNTAIN FIRE WT2	09/20	ARTIE JAMES	1	MEYER ICP/0700	MEYER ICP /2000	
E-308 BERTHOUD ENG6	09/14	SHANE PRIME	3	MEYER ICP/0700	MEYER ICP/2000	
E-309 WORLAND 63 ENG6	09/13	BEN GOMEZ	3	MEYER ICP/0700	MEYER ICP/2000	
SOFR	09/10	RICK JONES	1	MEYER ICP/0700	MEYER ICP/2000	
EMTF	09/14	CHRIS ORR	1	MEYER ICP/0700	MEYER ICP/2000	
6. Control Operations/Work Assignments:						
Task: Patrol for spot fires and slop overs; mop up 100%. Mop up perimeter of burnout 20-50 feet in to secure the fire line. Identify opportunities for direct hand line around Zeke Meadows to the west.						
Purpose: Minimize acres burned in DIV R/T.						
End State: Execute full suppression fire management strategies using indirect protection tactics to guide fire into man-made or natural barriers, while minimizing firefighter exposure and impacts to critical values at risk.						
7. Special Instructions:						
Refer to the 220 for aerial water use practices to prevent the spread of aquatic invasives.						
Identify IA resources within division.						
8. Division/Group Communication Summary						
Function	Channel	RX Frequency N/W	RX Tone/NAC	TX Frequency N/W	TX Tone/NAC	Mode
COMMAND	7	168.0750N	114.8	170.4250N	114.8	A
TACTICAL	4	166.7250N	114.8	166.7250N	114.8	A
AIR TO GROUND	14	169.2000N		169.2000N		A
AIR TO GROUND	15	164.7500N		164.7500N		A
AIR GUARD	16	168.6250N		168.6250N	110.9	A
9. Prepared By (Resource Unit Leader)		Approved By (Planning Section Chief)		Date	Time	
RICH AUBUCHON - RESL		TERRY PIERCE - PSC1 		09/09/2017	2000	

Division/Group Assignment List (ICS 204 WF)

1. Incident Name:			3.			
MEYERS SAPPHIRE COMPLEX			III	W		Branch:
2. Operational Period: 0700 - 2000						Division/Group:
Date/Time From:	Date/Time To:					
09/10/2017 0700 SUN	09/10/2017 2000 SUN					
4. Operations Personnel						
OPS SECTIONS CHIEF	PETER MYERS DAVID WALKER	DIVISION/GROUP SUPERVISOR	KELLY CORNWALL			
PLANNING OPS	JAMIE SCHWARTZ JEREMY BRAND (T)	AIR OPERATIONS DIRECTOR	LYNNE HOWARD BART KICKLIGHTER (T)			
5. Resources Assigned this Period						
Strike Team / Task Force / Resource Designator	LWD	Leader	Number Persons	Drop Off PT./Time	Pick Up PT./Time	
E-123 ENG6				MEYERS ICP/0700	MEYERS ICP/2000	
6. Control Operations/Work Assignments:						
7. Special Instructions:						
Complete maintenance of equipment as appropriate and maintain readiness to engage as directed by operations.						
8. Division/Group Communication Summary						
Function	Channel	RX Frequency N/W	RX Tone/NAC	TX Frequency N/W	TX Tone/NAC	Mode
COMMAND	7	168.0750N	114.8	170.4250N	114.8	A
TACTICAL	5	166.7750N	114.8	166.7750N	114.8	A
AIR TO GROUND	14	169.2000N		169.2000N		A
AIR TO GROUND	15	164.7500N		164.7500N		A
AIR GUARD	16	168.6250N		168.6250N	110.9	A
9. Prepared By (Resource Unit Leader)		Approved By (Planning Section Chief)		Date	Time	
RICH AUBUCHON - RESL		TERRY PIERCE - PSC1 <i>J. Pierce</i>		09/09/2017	2000	

INCIDENT RADIO COMMUNICATIONS PLAN (ICS 205)

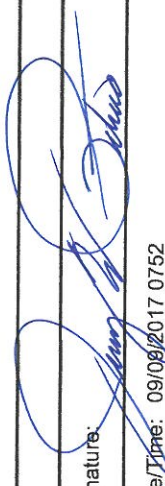
1. Incident Name: MEYERS	2. Date/Time Prepared: Date: 09/09/2017 Time: 0752	3. Operational Period: 0700 - 2000 Date/Time From: 09/10/2017 0700 Date/Time To: 09/10/2017 2000
------------------------------------	---	---

4. Basic Radio Channel Use:

Zone Group	Ch #	Function	Channel Name/Trunked Radio System Talkgroup	Assignment	RX Freq	RX Tone/NAC	TX Freq	TX Tone/NAC	Mode (A,D, or M)	Remarks
MEYERS	1	TACTICAL	TAC 1	DIV A/E	168.0500N	114.8	168.0500N	114.8	A	
MEYERS	2	TACTICAL	TAC 2	DIV K	168.2000N	114.8	168.2000N	114.8	A	
MEYERS	3	TACTICAL	TAC 3	DIV I	168.6000N	114.8	168.6000N	114.8	A	
MEYERS	4	TACTICAL	TAC 4	DIV R/T	166.7250N	114.8	166.7250N	114.8	A	
MEYERS	5	TACTICAL	TAC 5	DIV W	166.7750N	114.8	166.7750N	114.8	A	
MEYERS	6	TACTICAL	TAC 6		168.2500N	114.8	168.2500N	114.8	A	
MEYERS	7	COMMAND	CMD 3	N. OF THE FIRE	168.0750N	114.8	170.4250N	114.8	A	FIRELINE TO ICP - EMERINE MT.
MEYERS	8	COMMAND	CMD 4	W. OF THE FIRE	170.4125N	114.8	165.9625N	114.8	A	FIRELINE TO ICP - BARE HILL
MEYERS	9	COMMAND	CMD 5	S. OF THE FIRE	168.5750N	114.8	173.6750N	114.8	A	FIRELINE TO ICP - SENATE MT.
MEYERS	10	COMMAND	CMD 6	SE OF THE FIRE	173.0375N	114.8	167.3250N	114.8	A	FIRELINE TO ICP - TINY MT.
MEYERS	11	COMMAND	B-D / EMERINE	B-D FOREST NET	171.0000N		170.3500N	146.2	A	B-D FOREST NET BACKUP - EMERINE
MEYERS	12	TACTICAL	TAN	EMS	155.3400N		155.3400N	156.7	A	AIR AMBULANCE
MEYERS	13	TACTICAL	WHITE	EMS	155.2800N		155.2800N	156.7	A	GROUND AMBULANCE
MEYERS	14	AIR TO GROUND	A/G PRIMARY	ALL DIVISIONS	169.2000N		169.2000N		A	AIR TO GROUND PRIMARY
MEYERS	15	AIR TO GROUND	A/G SECONDARY	ALL DIVISIONS	164.7500N		164.7500N		A	AIR TO GROUND SECONDARY
MEYERS	16	AIR GUARD	AIRGUARD	ALL DIVISIONS	168.6250N		168.6250N	110.9	A	AIR EMERGENCY ONLY

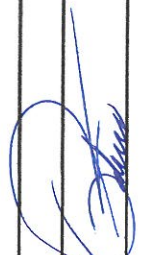
5. Special Instructions:

6. Prepared By (Communications Unit Leader) Name: JERRY W. PATRICK

Signature: 

ICS 205 IAP Page Date/Time: 09/09/2017 0752

INCIDENT RADIO COMMUNICATIONS PLAN (ICS 205)

1. Incident Name:		2. Date/Time Prepared:		3. Operational Period:						
MEYERS		Date: 09/09/2017 Time: 0752		Date/Time From: 09/10/2017 0700 Date/Time To: 09/10/2017 2000						
4. Basic Radio Channel Use:										
Zone Group	Ch #	Function	Channel Name/Trunked Radio System Talkgroup	Assignment	RX Freq	RX Tone/NAC	TX Freq	TX Tone/NAC	Mode (A, D, or M)	Remarks
SAPPHIRE	1	TACTICAL	TAC 1	DIV G	168.0500N	123.0	168.0500N	123.0	A	BRANCH I
SAPPHIRE	2	TACTICAL	TAC 2	DIV Z	168.2000N	123.0	168.2000N	123.0	A	LITTLE HOGBACK - BRANCH II
SAPPHIRE	3	TACTICAL	TAC 3	DIV N/O/P	168.6000N	123.0	168.6000N	123.0	A	LITTLE HOGBACK - BRANCH II
SAPPHIRE	4	TACTICAL	TAC 4	STAGING	168.7250N	123.0	168.7250N	123.0	A	LITTLE HOGBACK - BRANCH II
SAPPHIRE	5	TACTICAL	TAC 5	STRUCTURE	166.7750N	123.0	166.7750N	123.0	A	LITTLE HOGBACK - BRANCH II
SAPPHIRE	6	TACTICAL	TAC 6		168.2500N	123.0	168.2500N	123.0	A	
SAPPHIRE	7	COMMAND	CMD 7	ALL DIVISIONS	168.1000N	123.0	170.4500N	123.0	A	CMD RPT FOR GOAT CREEK AND SLIDE ROCK FIRES - WEST
SAPPHIRE	8	COMMAND	CMD 8	ALL DIVISIONS	169.5375N	123.0	164.7125N	123.0	A	CMD RPT FOR LITTLE HOGBACK FIRE - WEST
SAPPHIRE	9	COMMAND	CMD 9	ALL DIVISIONS	166.3375N	123.0	170.3875N	123.0	A	CMD RPT FOR LITTLE HOGBACK FIRE - EAST
SAPPHIRE	10	COMMAND	CMD 10	ALL DIVISIONS	164.6750N	123.0	169.8125N	123.0	A	CMD RPT FOR GOAT CREEK AND SLIDE ROCK FIRES - EAST
SAPPHIRE	11	COMMAND	CMD 11	ALL DIVISIONS	171.0375N	123.0	163.8250N	123.0	A	SE END OF LITTLE HOGBACK
SAPPHIRE	12	TACTICAL	TAN	EMS	155.3400N	123.0	155.3400N	156.7	A	AIR AMBULANCE
SAPPHIRE	13	QUIGG RPT	QUIGG RPT	IA	164.7000N		164.1000N	131.8	A	LOLO FOREST RPT
SAPPHIRE	14	AIR TO GROUND	A/G 1	AIR ATTACK	169.1500N		169.1500N		A	COMMUNICATE WITH AIR ATTACK
SAPPHIRE	15	AIR TO GROUND	A/G 2	BRANCHES I AND II	169.0875N		169.0875N		A	
SAPPHIRE	16	AIR GUARD	AIRGRD	ALL DIVISIONS	168.6250N		168.6250N	110.9		AIR EMERGENCY OR INITIAL CONTACT
5. Special Instructions:										
6. Prepared By				Name: JERRY W. PATRICK				Signature: 		
(Communications Unit Leader)								Date/Time: 09/09/2017 0752		
ICS 205				IAP Page						

AIR OPERATIONS SUMMARY

Prepared By: Bart Kicklighter AOBD(T)

Prepared Date/Time: 9/9/2017 1800

1. INCIDENT NAME:		2. OPERATIONAL PERIOD DATE:		START TIME:	END TIME:	SUNRISE:	SUNSET:
Meyers Sapphire Complex		9/10/2017		700	2200	0705 @ Helibase	1956 @ Helibase
<p>3. REMARKS (Safety Notes, Hazards): Secondary A/A used as assigned by Air Attack. Secondary A/G used as needed. HOTSY BUCKET WASHOUT: (1) Beaverhead-Deerlodge (Meyers and Sapphire): <i>When conducting bucket/snorkel work with Helicopters, ensure that only one water source is used at a time. If utilizing multiple water sources, ensure buckets/snorkels are washed between the use of different sources.</i> (2) LOLO PART OF SAPPHIRE: Required when switching from one drainage to another (3) No wash required when switching dips while on the Bitterroot (4) Bucket wash when switching between Lolo or B-D and Bitterroot. (5) NEVER DIP FROM CLARK FORK.</p>							
<p>4. READY ALERT AIRCRAFT <i>Incident Medevac Resources:</i> 7HE AS350B3 (litter-capable) 407MC Bell 407 (backboard only) Litter Kit at Meyers HB SHORTHAIL Order via A/C Desk. ** 401HQ @ Lincoln, MT 73BH @ Plains ** Hoist/NVG: Two Bear Air Civilian A/C Medical (Tan): 155.3400N Tone TX 156.7 A/G Hospital (White): 155.2800</p>							
<p>5. Airspace Information: Sapphire TFR # 7/9864 Freq: 118.2250 Radius: POLYGON Altitude: 12,000 MSL Meyers TFR: 7/5927 Freq: 121.0750 Radius: POLYGON Altitude: 11,000</p>							

6. PERSONNEL		NAME	PHONE #	7. FREQUENCIES	VHF-AM	VHF-FM
6a. Sapphire Meyers Complex						
Air Ops Branch Director	Lynne Howard	678-699-3266		Sapphire A/G PRIMARY A/G 1		169.1500N
Air Ops Branch Director (Trainee)	Bart Kicklighter	828-460-6559		Sapphire A/G SECOND A/G 2		169.08750N
Air Support Group Supervisor	Teresa Williamson	720-537-4972		Sapphire A/A FW	118.2250	
Air Tactical Group Supervisor	Larry Mars	479-857-9663		Sapphire A/A RW	123.4000	
Air Ops Yurt Phone	AOBD/ASGS	406-859-9129				

6b. Meyers Freqs						
Meyers Helibase Manager	Brad Bernardy	601-540-6528		Meyers A/G PRIMARY (A/G 1)		169.2000
				Meyers A/G SECOND (A/G 2)		164.7500
Meyers Helibase Trailer Phone		406-859-9133		Meyers A/A FW	121.0750	
Mixmaster Miner Mud	Marty Posey	575-746-7320		Meyers A/A RW	126.6250	
Missoula (Lolo NF)	A/C Desk	406-829-7060		Command - Helibase to ATGS		168.075 Rx - 170.425 Tx 114.8
Dillon (B-D NF)	A/C Desk	406-683-3975/3827				

8. AERIAL SUPERVISION							
FAA #	REQ #	TY	MAKE/MODEL	BASE	START	AVAIL	REMARKS
							National Flt Follow
							Air Guard
							DNRC A/G (Yellow)
							Deck
							Takeoff/Landing (TOLC)
							163.1000
							172.6500N
							168.6500 Tx/Rx 110.9
							168.625 TX 110.9
							166.9000N or 151.2200 Rx/Tx

NOTE: Air Tactical and Platforms TBD on Case By Case Need

7d. Initial Attack Freqs

9. HELICOPTERS									
FAA N#	REQ #	TY	MAKE/ MODEL	BASE	BRIEF	AVAIL	REMARKS	7d. Initial Attack Freqs	
116	A-7	1	KMax	Meyers	800	830	Restricted; Quick Fill	Deerlodge Direct	171.425 RX/TX TT 131.8
17HX	A-67	2	Bell 205++	Meyers	800	830	Standard	B-D IA Air/Air	171.000 RX/TX TT 141.3
111DR	A-87	2	B-205	Meyers	800	830	Restricted	B-D IA A/G #29 (pri)	132.7000
7HE	A-14	3	AS-350B3	H-31	800	830	Standard; <i>lifter-capable</i>	B-D IA A/G #52 (sec)	166.9000 N
407MC	A-69	3	Bell 407	Meyers	800	830	Standard; <i>backboard only</i>	B-D IA A/G #53 (alt)	168.3875 N
352TA	A-37	3	AS-350B3	Meyers	800	830	Standard	Lolo East Direct	168.4875 N
9. FIXED WING									
N9CS	A-100		Cessna 337	Butte			ATGS Platform	Lolo West A/G (A/G 05)	168.6500N 110.9 Rx/Tx
NOTE: <i>Italicized Aircraft/Req are on Meyers Order; Others are Sapphire</i>									
10. MISSIONS - MEYERS									
Type									
Bucket drops as requested									
Recon as requested									
Aerial Ignition possible									
10. MISSIONS - SAPPHIRE									
Type									
Bucket Support as requested in DIVS Z to hold/check firing operation									
ATGS to monitor Sliderock and support Sapphire as requested									
Recon as requested									
Aerial Ignition as requested									

TIME	From	To
TBD	Meyers Helibase	Fire
TBD	Meyers Helibase	Fire
TBD	Meyers Helibase	Fire
TBD	Meyers Helibase	Fire
10. MISSIONS - SAPPHIRE		
TIME	From	To
TBD	Meyers Helibase	Fire
TBD	Meyers Helibase	Fire
TBD	Meyers Helibase	Fire
TBD	Meyers Helibase	Fire

Meyers ICP Fire Phone List
Southern Area Incident Management Team
Mike Dueitt - Incident Commander

POSITION	INCIDENT PHONE
Incident Commander	(406) 859-9101
Liaison Officer	(406) 859-9102
Safety Officer	(406) 859-9129
Public Information Officer	(406) 859-9107
Operations Section Chief	(406) 859-9129
Operations Section Chief	(406) 859-9129
Air Operations Branch Director	(406) 859-9129
Meyers Helibase	(406) 859-9133
Planning Section Chief	(406) 859-9106
Logistics Section Chief	(406) 859-9103
Logistics Section Chief	(406) 859-9103
Communications	(406) 859-9099
Facilities Unit Leader	(406) 859-9130
Ground Support	(406) 859-9097
Ground Support	(406) 859-9098
Medical Unit Leader	(406) 859-9100
Finance Section Chief	(406) 859-9092
Ordering Manager	(406) 859-9090
Ordering	(406) 859-9091
Resource Unit Leader	(406) 859-9106
Demob Unit Leader	(406) 859-9106
Security	(406) 859-9130
Plans FAX	(406) 859-9105



HEALTH AND SAFETY MESSAGE

“We don’t plan on luck to be safe, we plan on sound risk management and good decisions”....the Red Team

INCIDENT: : Meyers-Sapphire Complex

DATE: Sunday, September 10, 2017

Major Hazards & Risks: Risk Management, Wildlife Hazards, Medical Emergencies

Risk Management- This is our primary means of maintaining safe wildland fire operations. Constantly *evaluate your actions* and do not hesitate to adjust as environmental and human factor conditions change. Review Risk Management Process in your IRPG, page 1. Look for opportunities that provide a high probability of success, while limiting risk and exposure. Ensure **L.C.E.S.** is in place at all times.

Wildlife Hazards- Be watchful for Grizzly Bears, Wolves, Moose, Bees, and other insects that bite or sting. Don’t leave food out and haul out your trash daily. If wolves, bears, or moose are encountered, give them plenty of room and leave the area. Identify personnel allergic to bees, wasps, and yellowjackets, and ensure medication is available.

Medical Emergencies- Do you know what to do in case of a medical emergency? *Review the Medical Incident Report “9 Line”* at the end of your IRPG or the IAP. Your actions may be what saves a life!

IF you SEE Something, SAY Something!!



Remember

✓ STEP BACK

✓ THINK

✓ ORGANIZE

✓ PROCEED

L.C.E.S: Make sure they are in place

Red Team Safety Officers: Tony Rivers (T), Mike Cook, Larry Connell, Brad Lidell

INCIDENT SAFETY ANALYSIS 215a

Meyers-Sapphire Complex - Sunday, September 10, 2017

8. Location	9. Hazard	6. Control or Abatement Action (Engineering, Administrative, PPE, Avoidance, Education, etc)
Contingency, IA	Power Utilities	<ul style="list-style-type: none"> ~ Notify all personnel of down electrical lines. ~ Refer to the IRPG page 24 for Power Line Safety. ~ Always treat downed wires as energized. ~ Identify and avoid high tension transmission lines. ~ In high winds or areas of dense smoke, avoid areas under power lines. ~ Be aware of utility restoration in your work area.
ALL	Air Operations	<ul style="list-style-type: none"> ~ Follow " Aviation Watch-Out Situations" on page 44, IRPG. ~ Don't plan on air resources for medical transport or resupply. ~ Ensure positive communication with all air resources. ~ Ensure communications are established with operators. ~ During airtanker operations clear the drop zone before approach of the lead plane.
R,T,W,N,O	Structure Protection & HAZMAT	<ul style="list-style-type: none"> ~ Review "Wildland Urban Interface" Watch outs, IRPG page 12. ~ Use "Structure Assessment" checklist, IRPG pages 13-15. ~ Follow "HAZMAT Incident Operations" on pages 34-36 in IRPG. ~ Identify and avoid damaged gas service near structures.
ALL	Extreme Fire Behavior	<ul style="list-style-type: none"> ~ Share weather observations with all personnel assigned to division. ~ Establish LCES ~ Establish "Trigger Points" to withdraw. ~ Use "Risk Management" process prior to engaging in suppression actions, refer to page 1, IRPG.
ALL	Fireline Hazards	<ul style="list-style-type: none"> ~ Establish and continue to validate LCES. ~ Avoid radiant heat by wearing appropriate PPE correctly. ~ Use correct tool for task assigned. ~ Follow power line safety protocol as outlined on page 22 in IRPG. ~ Flag and isolate all HAZMAT and alert all personnel working in Division. ~ Follow WUI recommendations on pages 10-11 in IRPG.
ALL	Helicopter Operations	<ul style="list-style-type: none"> ~ Helicopter operations should be used for priority missions. ~ Stay clear of all bucket drops when suppression actions are in place and allow 1 minute prior to re-entry. ~ Pilots or air supervisor ensure ground resources are clear before bucket drops. ~ Monitor A-G communications. ~ Follow aviation safety guidelines in IRPG and IHOG. ~ Ground resources advise pilot of local power lines and local visibility issues.
ALL	Hazard Trees	<ul style="list-style-type: none"> ~ Follow "Hazard Tree Safety" guidelines, IRPG page 22. ~ Post lookouts, or use a spotter in mop-up areas with personnel. ~ Don't park vehicles or take breaks in high concentrations of hazard trees. ~ Establish trigger points for disengagement during high wind events. ~ Remember that the hazard zone extends a minimum of 2 1/2 tree heights.
A,E,K,I	Chain Saw Operations	<ul style="list-style-type: none"> ~ Follow "Hazard Tree Safety" guidelines, IRPG page 22 ~ Look up, Look down, Look around for hazard tree indicators. ~ Only fell and buck trees within your expertise, and training. ~ Follow "Procedural Felling Operations" on page 79 in IRPG. ~ Do not fall trees during high wind events. ~ Ensure proper use of all required PPE.
Initial Attack	Downhill Line Construction	<ul style="list-style-type: none"> ~ Minimize downhill line locations. ~ Post lookouts (IRPG pg. 7) ~ Follow downhill line construction guidelines (IRPG pg. 9)

INCIDENT SAFETY ANALYSIS 215a

ALL	Steep Terrain & Rolling Debris	<ul style="list-style-type: none"> ~ Plan for medical emergencies and extreme fire behavior / escape routes over steep terrain and limited access. ~ Maintain 8'-10' spacing when working & walking. ~ Don't work above or below any personnel or heavy equipment. ~ Be on the lookout for rolling rocks, debris, or burning material. ~ Evaluate necessity to send personnel in areas with limited access. ~ Post lookouts (IRPG pg 7), identify safety zones and suitable escape routes, provide good communications.
ALL	Injury & Medical Emergency	<ul style="list-style-type: none"> ~ Assist injured employee and provide appropriate medical care. ~ Use EMT's on Division for initial care. ~ Follow medical protocol as outlined in ICS-206 & IRPG Pgs 99-108
A,R	Firing Operations & Devices	<ul style="list-style-type: none"> ~ Only personnel trained in the use of each device will be authorized to use firing equipment. ~ Ensure all personnel are aware of firing operation that may affect them. ~ Wear appropriate PPE. ~ Ensure aerial/ground ignition plans have been adequately developed and personnel are briefed.
ALL	Communications	<ul style="list-style-type: none"> ~ Maintain communication with aviation resources, and suppression organization. ~ Ensure all know frequency and protocol for contacting resources. ~ Use clear terminology, ask questions and ensure good understanding, especially with new resources. ~ Utilize the ICS 205. ~ Utilize human repeaters when working in dead spots. ~ Know who you will contact in case of an emergency and practice the IWI protocol and 9 Line
ALL	Heavy Equipment Operations	<ul style="list-style-type: none"> ~ Ensure communications are established with operators. ~ Use hand signals if other communications are unavailable. ~ Maintain a 50'-100' exclusion area around equipment and increase it to 1 1/2 times tree height when in timber. ~ Use a spotter when backing.
ALL	Night Operations	<ul style="list-style-type: none"> ~ Maintain high visibility in work area and wear vest while in roadway. ~ Use glow sticks to mark hazards. ~ Ensure personnel have a personal light (headlamp) and red strobe to ensure visibility. ~ Watch for signs of fatigue. ~ Take breaks away from areas of known hazard.
ALL	Bears and Wolves	<ul style="list-style-type: none"> ~No food in tents. Pick up trash in ICP and on the line. Don't travel alone when possible. Make noise when traveling through remote areas alone.
ALL	Personal Hygiene	<ul style="list-style-type: none"> ~ Don't share personal items such as water bottles communication devices and utensils. ~ Wash hands before meals, and after use of rest room facilities. ~Clean & disinfect commonly used surfaces (cell phones, steering wheels, ect.). ~Cough & sneeze into your sleeve
ALL	Smoke Exposure	<ul style="list-style-type: none"> ~Use warning lights and provide traffic control on roads as necessary. Rotate crews in and out of smoky areas to limit exposure when possible.

INCIDENT SAFETY ANALYSIS 215a

ALL & ICPs	Driving & Traffic	<ul style="list-style-type: none"> ~ Practice "Defensive Driving" techniques traveling on all roads and city streets. ~ Use spotters when backing. ~ Honk horn to alert personnel when backing. ~ Keep clutter off dash and inside cab. ~ Follow Driving LCES (Lights, Chock blocks, Emergency brake, Seat belts. ~ Always use headlights. ~ Yield to pedestrians and bicycles. ~ Observe posted speed limits. ~ Use the 3 second rule for following distance when driving. ~ Use chock blocks, turn wheels into hill. ~ Avoid distractions (eating, cell phones, radio). ~ Ensure that windshields are kept clean of dust and bugs. ~Use caution when traveling on roads that are impacted by smoke or dusty conditions. ~When feasible, coordinate travel to and from the hotels to ensure two or more personnel travel together to mitigate long distances.
DIVS I	Chipping	<ul style="list-style-type: none"> ~Make sure all personnel operating the equipment are qualified. ~Do not wear clothing which may become entangled with material being fed into chipper. ~Never reach into the infeed shroud. ~Do not use your hands or feet to push material into feeder. ~Wear the proper PPE when operating the chipper at all time.
ALL	Fatigue & Over Exertion	<ul style="list-style-type: none"> ~ Drink 1 quart of water each hour during and after work. ~ Rotate crews out of smoky areas. ~ Set a reasonable work pace and allow adequate rest breaks while on the project. ~ Use buddy system to monitor personnel of heat related and fatigue issues. ~ Follow work / rest guidelines. Mitigate before next shift.
ALL	Fatigue & Over Exertion	<ul style="list-style-type: none"> ~Ensure adequate rest (7-8 hrs of sound sleep). Stay Hydrated. Eat well balanced diet. Pay attention to minor body aches. Wash hands frequently. Monitor yourself and others for fatigue.
A,E,R,T,W	Mine Shafts	<ul style="list-style-type: none"> ~Avoid stepping on any man made rock or brush piles. Flag when located. Do not enter any mine shafts.


MEDICAL PLAN (ICS 206 WF)

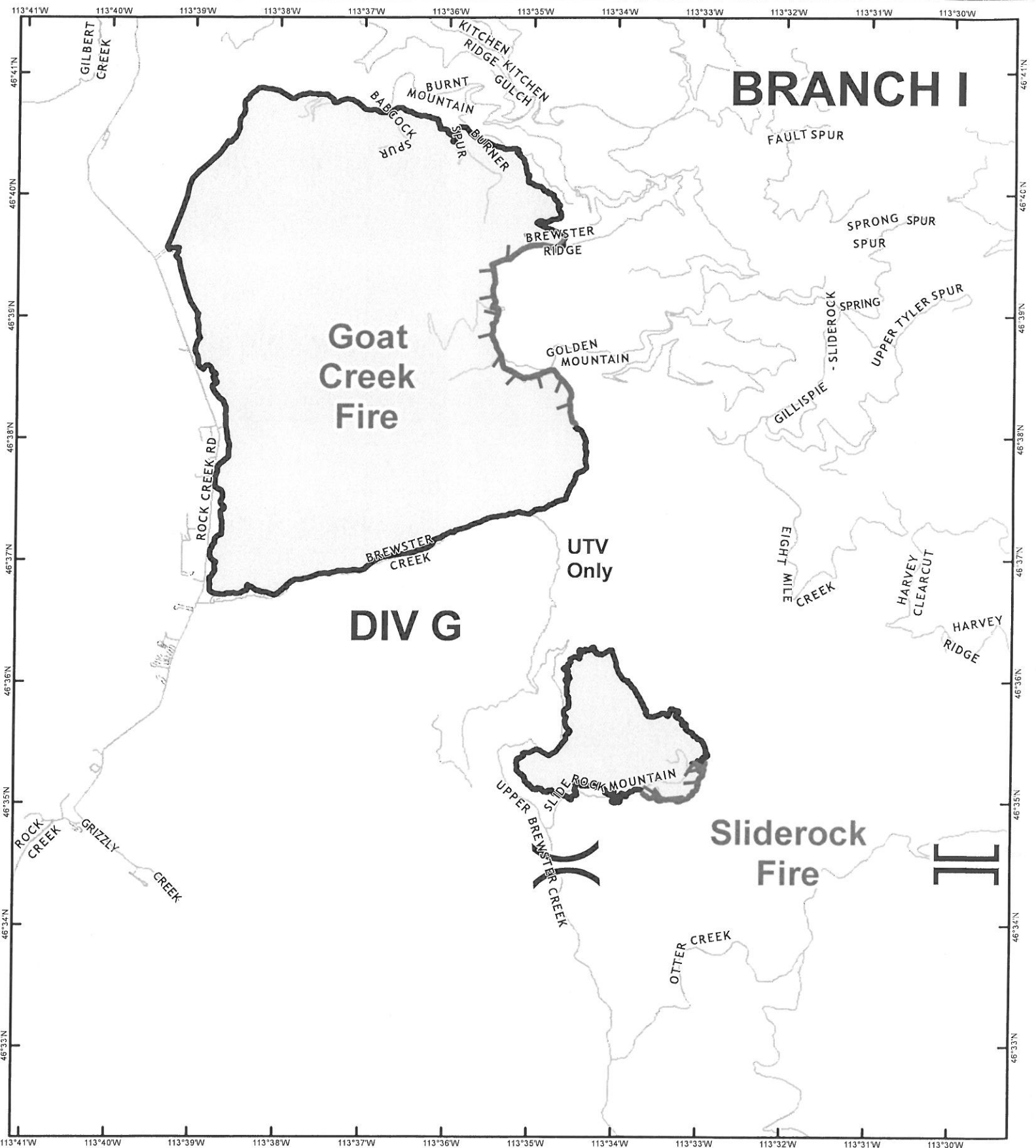
1. Incident/Project Name		2. Operational Period					
Meyers Sapphire Complex		Date/Time 9/10/2017 operational period					
3. Ambulance Services							
Name	Availability	Contact	Advanced Life Support (ALS) Yes No				
A-1 Ambulance Branch 1	Incident dedicated	Command channel	X				
Three Rivers Ambulance Branch 2	Incident dedicated	Command channel	X				
Granite, Ravalli and Deer Lodge County		911	X				
4. Air Ambulance Services							
Name	Phone	Type of Aircraft & Capability					
Air Idaho Rescue (West Yellowstone)	1-208-529-6340	Night Vision, ALS flight service, Tan. Ch 12					
Life Flight (Missoula and Butte)	911	Night vision, ALS transport, Frequency Tan. Ch 12					
Two Bear Air	911	Night vision, FLIR, hoist, can transport to ground unit or private aeromed unit. Frequency Tan. Ch 12					
5. Hospitals							
Name Complete Address	GPS Datum – WGS 84 Coordinate Standard Degrees Decimal Minutes DD° MM.MMM' N - Lat DD° MM.MMM' W - Long	Travel Time (from ICP) Air Ground		Phone	Helipad Yes No		Level of Care Facility
St. Patrick's Hospital 500 W Broadway Missoula, MT	Lat: N 46° 52.551' Long: W113° 59.986'	30 min	120 min	406-329-5635, Emergency Rm	Yes		Level 2 Trauma
Community Hospital of Anaconda 401 W Pennsylvania Anaconda, MT	Lat: N 46° 07.969' Long: W112° 57.456'	15 mins	45 mins	406-563-8585 ER Emergency Rm	Yes roof & ground		Level 4 community trauma hospital
Granite County Medical Center 310 Sansome ST Philipsburg, Mt	Lat: N 46° 19.811' Long: W113° 17.653'	15 min	30 min	406-859-3271	Yes		community hospital, no trauma designation
Marcus Daly Hospital 1200 Westwood dr Hamilton MT	Lat: N 46° 14.898' Long: W 114° 10.32'		To India Spike 1.0 hrs	406-363-2211	Yes		Level 4 trauma
Special Notes							
The Medical unit will be open from 0530 – 2200. After hours, security can contact the incident ambulance and the MEDL in case of an emergency in camp or on the line.							
6. Division/Branch		Area Location Capability					
Division A/E Branch 3		EMS Responders & Capability:		BINK, AEMT(IA) A-1 Ambulance (ALS,BLS)			
		Equipment Available on Scene:		spine board, kit, oxygen			
		Medical Emergency Channel:		Command Channel			
		ETA for Ambulance to Scene:		5-10 min. *Stationed at Copper Creek CG*			
		Air/Ground:		A/G Primary 169.2000			
		Approved Helispots:		H8, near DP 19			
		Lat:		N 45 59.963'			
		Long:		W113 31.708'			

MEDICAL PLAN (ICS 206 WF)

Branch 3 Division R/T/W	EMS Responders & Capability:	Chris Orr, EMTF			
	Equipment Available on Scene:	BLS Kit, SKED, AED, BLS			
	Medical Emergency Channel:	Tac on ground/Command Channel			
	ETA for Ambulance to Scene:	45 minutes			
	Air/Ground:	A/G Primary 169.2000			
	Approved Helispots:	H-18 , near DP28			
	Lat:	N 46° 08.610'			
	Long:	W 113° 36.45'			
Branch 3 Division I (India)	EMS Responders & Capability	Chris Noon, EMTF Olena Gartner, EMTF			
	Equipment Available on Scene:	BLS Kit, Spine Board, Oxygen			
	ETA for Ambulance to Scene:	1.0 hours			
	Air/Ground	A/G primary			
	Approved Helispots	H-31			
	Lat:	N 45° 54.340'			
	Long:	W113° 45.114'			
	Medical Emergency Channel:	Command,			
Branch 3 Division K	EMS Responders & Capability:	Melanie Miller, EMPF			
	Equipment Available on Scene:	ALS/BLS Kit, Sked, AED, O2			
	ETA for Ambulance to Scene:	45 min			
	Approved Helispot:	H- 10			
	Lat:	N46° 01.531'			
	Long:	W113° 39.998'			
	Medical Emergency Channel:	Command			
Branch 1 Division G (GOAT)	Point of Contact:	Greg Titus			
	EMS Responders & Capability:	Terry Williamson, AEMF			
	Equipment Available on Scene:	BLS, Trauma kit, O2, SKED			
	ETA for Ambulance to scene:	1 hr from Missoula			
	Air from Helibase:	15 min			
	Approved Helispot:	H-4			
	Lat:	N 46° 40.553			
	Long:	W 113° 35.817			
Branch 2 Division N	Medical Emergency Channel:	Command			
	Point of Contact:	Alison Coons			
	EMS Responders & Capability:	Johanna Hyde, EMTF			
	Equipment Available on Scene:	ALS meds, BLS, Trauma kit, O2, SKED, AED, KED			
	ETA for Ambulance to Scene:	1hr from DP-49 (Three Rivers Ambulance)			
	Air from Helibase:	15 min			
	Approved Helispot:	H-14	H-15	H-16	Miner Mud
	Lat:	N46 31.110	N46 29.219	N46 26.120	N46 24.102
	Long:	W113 30.650	W113 30.981	W113 30.920	W113 30.278
Medical Emergency Channel:	Command				
Branch 2 Division O	Point of Contact:	Alison Coons			
	EMS Responders & Capability:	Johanna Hyde, EMTF			
	Equipment Available on Scene:	BLS, O2, Trauma kit, SKED			
	ETA for Ambulance to Scene:	30 min from DP-49 (Three Rivers Ambulance)			
	Air from Helibase:	15 min			
	Approved Helispot:	H-17		H-18	
	Lat:	N 46° 22.498		N 46° 21.505	
	Long:	W 113° 31.770		W 113° 32.533	
Medical Emergency Channel:	Command				

MEDICAL PLAN (ICS 206 WF)

Branch 2 Division P	Point of Contact:	Alison Coon	
	EMS Responders and Capability:	Three Rivers Ambulance (ALS, Paramedic)	
	Equipment Available on Scene:	BLS, ALS, Trauma gear, O2, AED	
	ETA for Ambulance:	30 min from DP-49 (Three Rivers)	
	Air from Helibase:	15min	
	Approved Helispot:	H-18	H-19
	Lat:	N 46° 21.505	N 46° 21.547
	Long:	W 113° 32.533	W 113° 33.252
	Medical Emergency Channel:	Command	
Branch 2 Division Z	Point of Contact:	Alison Coons	
	EMS Responders & Capability:	Rex Nielsen, EMPF	
	Equipment Available on scene:	ALS kit w/Meds, O2, SKED, AED	
	ETA for Ambulance:	30 min from ICP to DP-49 (Three Rivers)	
	Air from Helibase:	15 min	
	Approved Helispot:	H-21	
	Lat:	N 46° 24.623	
	Long:	W 113° 42.064	
	Medical Emergency Channel:	Command	
ICP	Ambulance:	Staged at DP-49 (Three Rivers)	
	EMS responders and capability	Dale Guynes, EMTB (BLS)	
	Equipment Available on Scene:	AED, medical unit supplies	
	Medical Emergency Channel:	Command Channel	
	ETA for Ambulance to Scene:	45 min	
	Approved Helispot:	Meyers Helibase	
	Lat:	N 46° 11.051'	
Long:	W 113° 29.571' elevation 6000'		
Prepared by (Medical Unit Leader)	Date/Time	1. Reviewed By (Safety Officer)	Date/Time
Fred Adler 479-238-6064	9/9/2017, 1200	Tony Rivers SOF1 	9/9/17



BRANCH I

Goat
Creek
Fire

DIV G

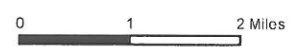
Sliderock
Fire

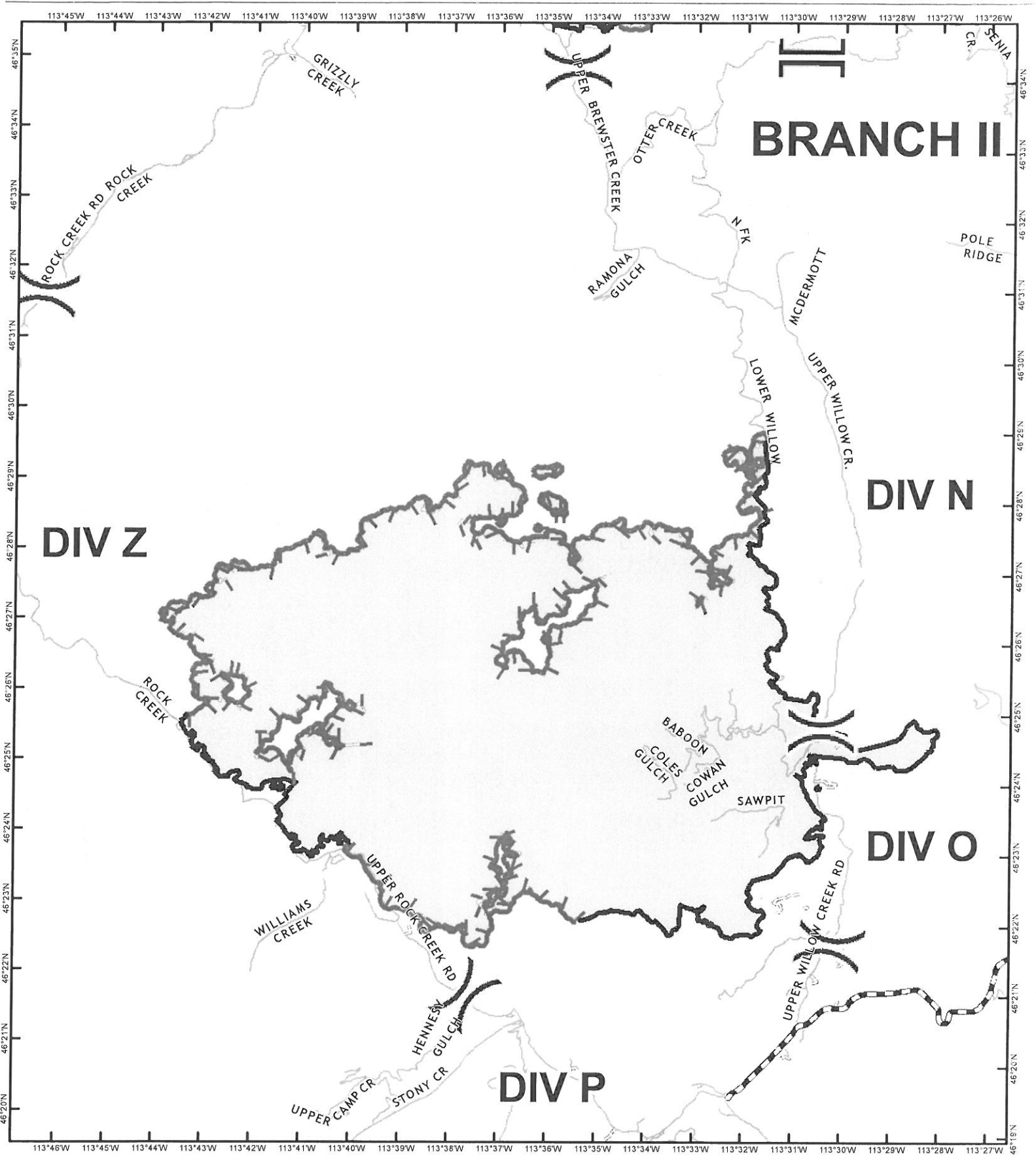
UTV
Only

**Meyers Sapphire
Complex
MT-LNF-001463**



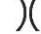

9/10/2017
Branch I - Goat Creek
and Slide Rock Fires
Perimeter from 9/8/2017 @ 0117
Goat Creek: 8,305 acres
Sliderock: 901 acres

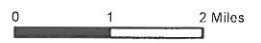
-  Uncontrolled Fire Edge
-  Completed Line
-  Division Break
-  Branch Break



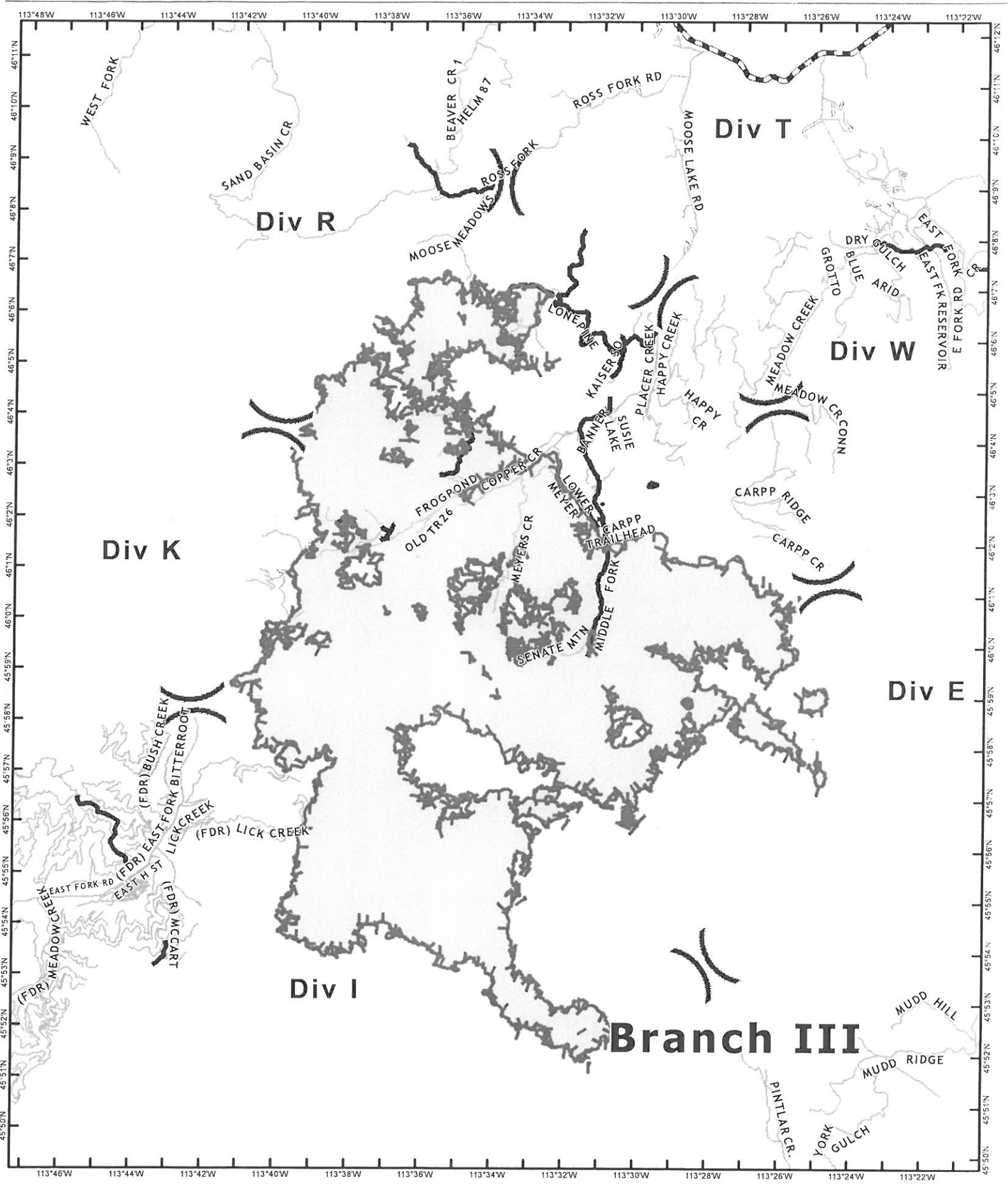


Meyers Sapphire Complex
 MT-LNF-001463
 9/10/2017
 Branch II
 Little Hogback Fire

-  Completed Line
-  Uncontrolled Fire Edge
-  Division Break
-  Branch Break






Perimeter from 9/8/2017 @ 0117
 34,400 acres



Meysers Sapphire
Complex
MT-BDF-002217

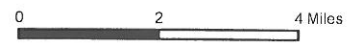
Branch III
Meysers Fire
59,411 acres

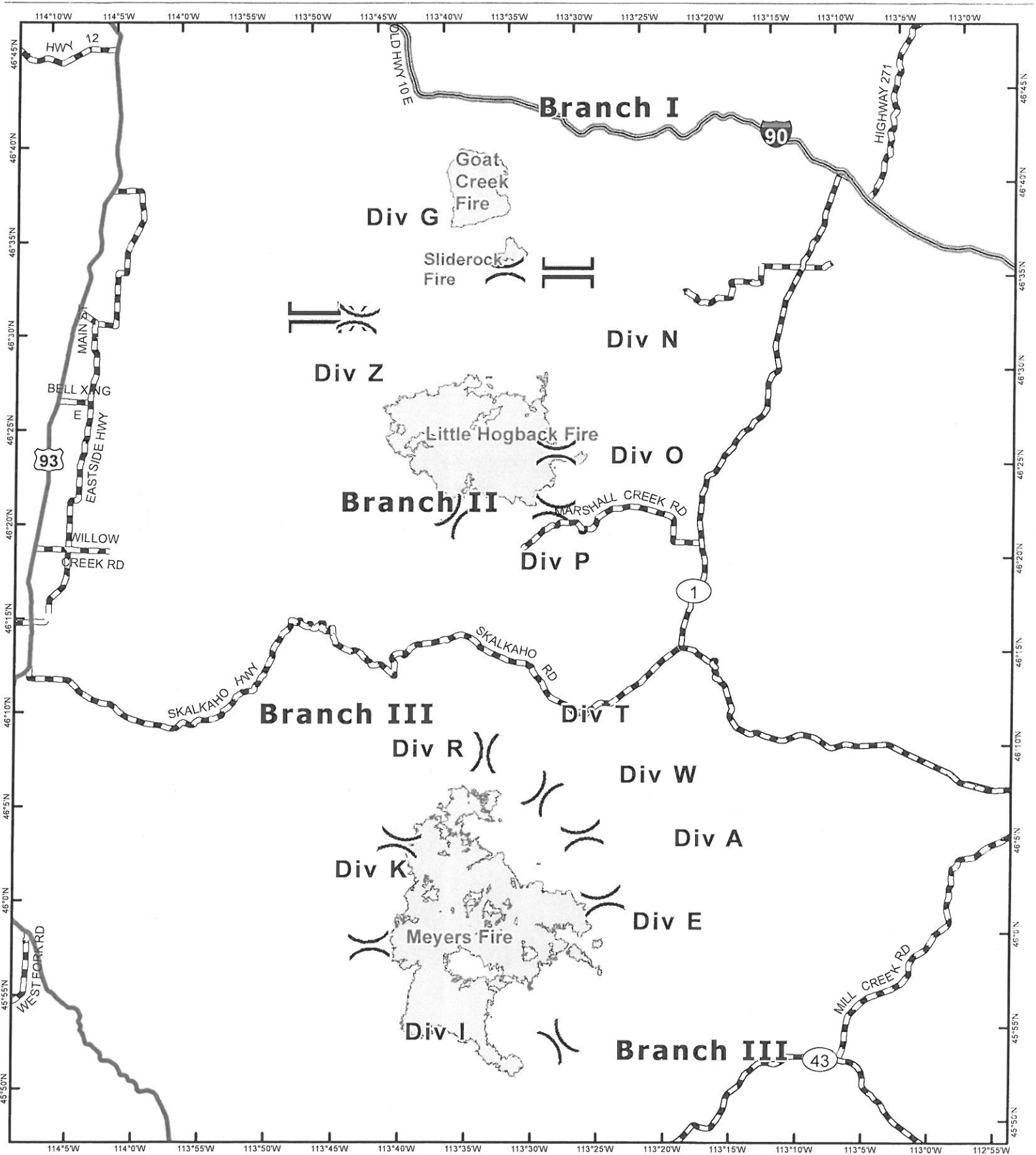
-  Division Break
-  Uncontrolled Fire Edge
-  Completed Line






9/10/2017

Perimeter from 9/8/2017 @ 0135





Meyers Sapphire Complex
 MT-BDF-002217
 9/10/2017
 IAP Map - Overview

-  Fire Perimeter
-  Division Break
-  Branch Break

Goat Creek: 8,305 acres
 Sliderock: 901 acres
 Little Hogback: 34,400 acres
 Meyers: 59,441 acres
 Total: 103,047 acres



MEDICAL PLAN (ICS 206 WF)

Medical Incident Report					
FOR ALL MEDICAL EMERGENCIES: IDENTIFY ON SCENE INCIDENT COMMANDER BY NAME AND POSITION AND ANNOUNCE "MEDICAL EMERGENCY" TO INITIATE RESPONSE FROM IMT COMMUNICATIONS/DISPATCH.					
Use items one through nine to communicate situation to communications/dispatch.					
1. CONTACT COMMUNICATIONS/DISPATCH <i>Ex: "Communications, Div. Alpha. Stand-by for Priority Medical Incident Report." (If life threatening request designated frequency be cleared for emergency traffic.)</i>					
2. INCIDENT STATUS: <i>Provide incident summary and command structure.</i>					
Nature of Injury/Illness		<i>Describe the injury (Ex: Broken leg with bleeding)</i>			
Incident Name		<i>Geographic Name + "Medical" (Ex: Trout Meadow Medical)</i>			
Point of Contact		<i>Name of Point of Contact</i>			
Patient Care		<i>Name of Care Provider (Ex: EMT Smith)</i>			
3. INITIAL PATIENT ASSESSMENT: <i>Complete this section for each patient. This is only a brief, initial assessment. Provide additional patient info after completing this 9 Line Report.</i>					
Number of Patients:	Male / Female	Age:	Weight:		
Conscious? <input type="checkbox"/> YES <input type="checkbox"/> NO = MEDEVAC!					
Breathing? <input type="checkbox"/> YES <input type="checkbox"/> NO = MEDEVAC!					
Mechanism of Injury: <i>What caused the injury?</i>					
Lat/Long (Datum WGS84) <i>Ex: N 40° 42.45' x W 123° 03.24'</i>					
4. SEVERITY OF EMERGENCY, TRANSPORT PRIORITY					
SEVERITY			TRANSPORT PRIORITY		
<input type="checkbox"/> URGENT-RED Life threatening injury or illness. <i>Ex: Unconscious, difficulty breathing, bleeding severely, 2° – 3° burns more than 4 palm sizes, heat stroke, disoriented.</i>			Ambulance or MEDEVAC helicopter. Evacuation need is IMMEDIATE.		
<input type="checkbox"/> PRIORITY-YELLOW Serious Injury or illness. <i>Ex: Significant trauma, not able to walk, 2° – 3° burns not more than 1-2 palm sizes.</i>			Ambulance or consider air transport if at remote location. Evacuation may be DELAYED.		
<input type="checkbox"/> ROUTINE-GREEN Not a life threatening injury or illness. <i>Ex: Sprains, strains, minor heat-related illness.</i>			Non-Emergency. Evacuation considered Routine of Convenience.		
5. TRANSPORT PLAN:					
Air Transport: (Agency Aircraft Preferred)					
<input type="checkbox"/> Helispot		<input type="checkbox"/> Short-haul/Hoist		<input type="checkbox"/> Life Flight	<input type="checkbox"/> Other
Ground Transport:					
<input type="checkbox"/> Self-Extract		<input type="checkbox"/> Carry-Out		<input type="checkbox"/> Ambulance	<input type="checkbox"/> Other
6. ADDITIONAL RESOURCE/EQUIPMENT NEEDS:					
<input type="checkbox"/> Paramedic/EMT(s)		<input type="checkbox"/> Crew(s)		<input type="checkbox"/> SKED/Backboard/C-Collar	
<input type="checkbox"/> Burn Sheet(s)		<input type="checkbox"/> Oxygen		<input type="checkbox"/> Trauma Bag	
<input type="checkbox"/> Medication(s)		<input type="checkbox"/> IV/Fluid(s)		<input type="checkbox"/> Cardiac Monitor/AED	
<input type="checkbox"/> Other (i.e. splints, rope rescue, wheeled litter)					
7. COMMUNICATIONS:					
Function	Channel Name/Number	Receive (Rx)	Tone/NAC *	Transmit (Tx)	Tone/NAC *
COMMAND					
AIR-TO-GRND					
TACTICAL					
*(NAC for digital radio system)					
8. EVACUATION LOCATION:					
Lat/Long (Datum WGS84) <i>EX: N 40 42.45' x W 123 03.24'</i>					
Patient's ETA to Evacuation Location:					
Helispot/Extraction Size and Hazards:					
9. CONTINGENCY:					
Considerations: <i>If primary options fail, what actions can be implemented in conjunction with primary evacuation method? Be thinking ahead...</i>				REMEMBER: Confirm ETA's of resources ordered Act according to your level of training Be Alert. Keep Calm. Think Clearly. Act Decisively.	