



# Meyers Sapphire Complex

## Incident Action Plan *Day*

Operational Period  
September 11, 2017  
0700 – 2000

QR for IAP



QR for Maps



Meyers

MT-BDF-002217

USFS PIK7C417 (0102)

FWS FFF200000K7C40

Sapphire Complex

MT-LNF-001463

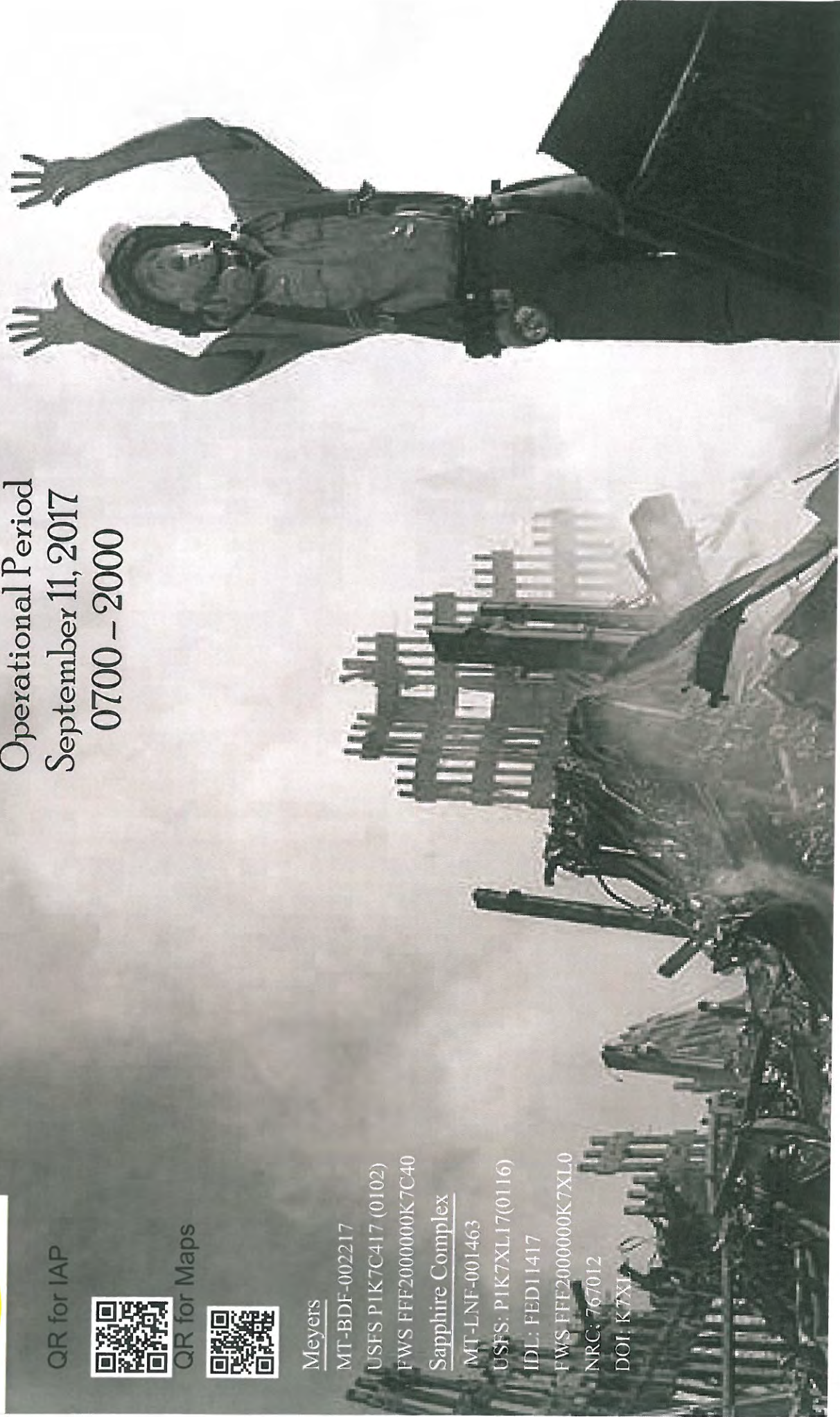
USFS: PIK7XL17(0116)

IDL: FED11417

FWS FFF200000K7XL0

NRC: 767012

DOI: K7XL



## INCIDENT OBJECTIVES (ICS 202)

<b>1. Incident Name:</b>		<b>2. Operational Period:</b> 0700 - 2000	
MEYERS SAPPHIRE COMPLEX		Date/Time From: 09/11/2017 0700      MON	Date/Time To: 09/11/2017 2000      MON
<b>3. Objective(s):</b>			
<p>1) Provide for life first of firefighters and public safety by following sound risk management protocols. Firefighter, public, and aviation safety is our priority in all fire management activities.</p> <p>2) Execute full suppression fire management strategies using direct, indirect, and/or zone protection tactics to guide fires in to man-made or natural barriers, while minimizing firefighter exposure and impacts to critical values at risk.</p> <p><b>Prioritize values at risk as follows: Private lands, infrastructure, grazing allotments, and natural, cultural, and heritage resources.</b></p> <p><b>Specific Values at Risk:</b></p> <ul style="list-style-type: none"> <li>• Ravalli County: Martin Creek Campground, Billy Springer Memorial subdivision and Bonanza communities in the East Fork of the Bitterroot, and the proposed Meadow Vapor Timber Sale.</li> <li>• Granite County: Moose Lake, Frog Pond Basin, Senate Mountain, Ross Fork Area, East Fork Reservoir, and Georgetown Lake, Little Hogback, Upper Willow, and Lower Willow.</li> <li>• Deerlodge County: Fish Lake Are, and Pintler Face timber sale.</li> </ul> <p>3) Provide initial attack support on the Lolo National Forest and initial attack response on Montana DNRC and Beaverhead-Deerlodge National Forest Protection within the Temporary Flight Restrictions (TFR)</p> <p>4) Coordinate suppression repair action with the assigned Resource Advisor prior to implementation.</p>			
<b>4. Operational Period Command Emphasis:</b>			
<p>5) Ensure timely and accurate dissemination and coordination of information regarding fire related activities is provided to the public, cooperators, elected official, and stakeholders.</p> <p>6) Contain costs by using the most cost effective method that does not jeopardize the safety of firefighters and the public.</p> <p>7) Enforce adequate standards to ensure that loss of accountable property and equipment is 6% or less.</p> <p>8) Manage the human resources assigned to the fire in a manner that promotes a positive and harassment free work environment and creates a "no tolerance" atmosphere for harassment, alcohol, or illegal drug use.</p>			
<b>General Situational Awareness:</b>			
See attached safety message			
<b>5. Site Safety Plan Required?</b> Yes <input type="checkbox"/> No <input checked="" type="checkbox"/>			
<b>Approved Site Safety Plan(s) Located at:</b>			
<b>6. Incident Action Plan</b> (the items checked below are included in this Incident Action Plan):			
<input checked="" type="checkbox"/> ICS 202	<input type="checkbox"/> ICS 207	Other Attachments:	
<input checked="" type="checkbox"/> ICS 203	<input type="checkbox"/> ICS 208	<input type="checkbox"/> _____	
<input checked="" type="checkbox"/> ICS 204	<input checked="" type="checkbox"/> ICS 220	<input type="checkbox"/> _____	
<input checked="" type="checkbox"/> ICS 205	<input checked="" type="checkbox"/> Map/Chart	<input type="checkbox"/> _____	
<input checked="" type="checkbox"/> ICS 205A	<input checked="" type="checkbox"/> Weather Forecast/Tides/Currents	<input type="checkbox"/> _____	
<input checked="" type="checkbox"/> ICS 206			
<b>7. Prepared by:</b> TERRY PIERCE    Position/Title:    PSC1		Signature:	
<b>8. Approved by Incident Commander:</b>		Name:    MIKE DUEITT	
ICS 202		Date/Time:    09/10/2017 2100	
IAP Page			



## ORGANIZATION ASSIGNMENT LIST (ICS 203)

<b>1. Incident Name:</b>	<b>2. Operational Period:</b> 0700 - 2000	
MEYERS SAPPHIRE COMPLEX	Date/Time From: 09/11/2017 0700      MON	Date/Time To: 09/11/2017 2000      MON

<b>8. Finance/Administration Section:</b>	
CHIEF	BONNY JOHNSON
DEPUTY	SANDRA MORRIS, JENNY CROSS (T)
COMPENSATION UNIT	ALICE BARNETTE DORIS DOSTER
COST UNIT	CAROLYN DETWILER KARILYN PUTT (T)
TIME UNIT	JEAN FRICK JUDY GAU (T)

<b>9. Prepared By:</b>	Name: DONNA THOMAS	Position/Title: RESL	<b>Signature:</b>
ICS 203	IAP Page	Date/Time: 09/10/2017 2100	



# FIRE WEATHER FORECAST



**Forecast No.** 50

**Name of Fire:** Meyers Sapphire Complex

**Unit:** Beaverhead-Deer Lodge National Forest

**Time & Date Issued:** 1835 MDT 09/10/17

**Prediction for:** Day Shift

**Shift Date:** 09/11/17 Monday

**Signed:** Mark Stubblefield, IMET *MS*

**Weather Discussion:** High pressure will begin to build over the Rocky Mountains today through Tuesday. This will bring warmer high temperatures, lower RHs, and less wind. Stronger overnight inversions will form with lows near freezing below the inversions. Inversions will last longer and allow for more smoke to fill the valleys. Afternoons will be breezy...especially above around 6500 feet. Much cooler and wetter weather will settle in over western Montana Wednesday through Saturday. The snow level could drop to 9000 feet by Thursday evening, 7500 by Friday afternoon, and 6500 Saturday morning. T'storms possible Tue night-Wed night.

### Today...

**Weather & Sky:** Areas of dense smoke in the morning. Partly cloudy.

**Meyers Fire:** (6000 to 8500 feet):

Max Temp: 71-78°F (Trend: 2-4 degrees warmer)

Min Humidity: 18-22% below 6500 28 to 32 above 6500 (Trend: 2-4 percent lower)

**Hogback Fire:** (4000-6000 feet):

Max Temp: Valleys 83-88 Ridges 78-80

Min RH: Valleys 18-22% Ridges 25-29%

Valley Wind (20 Ft): Upslope/valley 3-5 mph til 1000, southwest winds 10-15 MPH by late morning.

Transport winds: SW 13 MPH. Mixing Height: 13800 MSL

Ridgetop Wind (20 Ft): Southwest 10 to 15 MPH.

Haines Index: 3 (very low) LAL: 1

### Tonight...

**Weather & Sky:** Partly cloudy. Areas of dense smoke.

**Meyers Fire:** (6000 to 8500 feet):

Min Temp: Minimum 30-36°F...45 to 50 6500-7500 ft

Max Humidity: Maximum 80-90%...58-65% 6500-7500 ft

**Hogback Fire:** (4000-6000 feet):

Min Temp: Valleys 32-38 Ridges 48 to 52

Max RH: Valleys 70-78% Ridges 36-43%

Winds (20 Foot): SW 8 to 12 MPH until around 1900...then downcanyon 2 to 4 MPH.

Inversion: 6500-7000 ft above mean sea level.

**Outlook For Tuesday..** Areas of smoke...otherwise partly cloudy. Max Temp 78 to 88 F, Min RH 19-28%. 20-ft Winds Upslope/valley 3-5 MPH, then SW 10-15 MPH after 1100. Mixing level 17,000 MSL Transport winds: W 10 MPH. Haines Index: 4 (Low). Ridgetop Wind (20 Ft): Southwest 12 to 18 MPH.

### Extended Outlook Monday through Wednesday

	<u>Max T</u>	<u>Min RH</u>	<u>1500 Wind Dir</u>	<u>1500 Wind spd</u>	<u>Sky / Precipitation</u>
<u>Wednesday</u>	70-80	32%	W	12 MPH	Mostly cloudy. Chance of showers and thunderstorms.
<u>Thursday</u>	58-68	40%	W	10 MPH	Rain with snow showers above 9000 feet.
<u>Friday</u>	44-55	50%	NW	18 MPH	Rain with snow down to 7500 feet.

## FIRE BEHAVIOR FORECAST

<b>FORECAST NUMBER:</b> 50	<b>TYPE OF FIRE:</b> Wildfire
<b>FIRE NAME:</b> Meyers	<b>OPERATIONAL PERIOD:</b> Day 09/11/2017 Monday
<b>DATE ISSUED:</b> 09/10/2017	<b>TIME ISSUED:</b> 1700
<b>UNIT:</b> MT-BDF	<b>PREPARED BY:</b> Bruce Davenport FBAN/Brenda Dale FBAN <i>Brenda Dale</i>

### INPUTS

**WEATHER SUMMARY:** Similar temperatures, lower humidities and less wind than yesterday.

**Temps:** 71-78°F **RH:** 20-25%. **Winds:** **Ridges:** SW 10-15 mph. **Valleys:** Upslope early at 3-5 mph increasing and SW 10-15 mph until 1900 then switching to down canyon 2-4 mph.

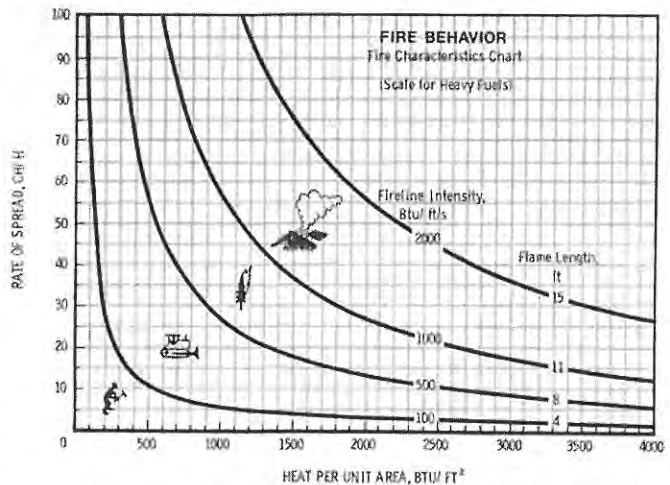
### OUTPUTS – FIRE BEHAVIOR

**GENERAL:** Fire will continue to smolder in heavy fuels which will occasionally promote single or group tree torching throwing embers that will most likely create a spot fire on receptive fuels.

Timber Fuel Model (FM 10 80% and TU2 20%)	Sheltered Timber	Unsheltered Timber
<b>Rate Of Spread</b> (chains/hour)*	8-18	10-30
<b>Heat/Unit Area</b> (BTU ft <sup>2</sup> )	1456	1456
<b>Fireline Intensity</b> (BTU ft/s)	200-500	250-800
<b>Flame Lengths</b> (feet)	5-8	10-30
<b>Spotting</b> (mph)	.1 - .4	.1 - .4
<b>Probability of Ignition</b> (%)	55%	55%

\*1 chain = 66 feet

The Hauling Chart estimates actual fire behavior from specific descriptions of fuel type, fuel moisture, topography, and wind. There are four descriptors of fire behavior that are plotted as a single point on the chart they are: rate of spread, heat per unit area, flame length, and fireline intensity. The values are directly related to flame length, and observable characteristic of fire behavior. Fireline intensity is indicative of the heat that would be experienced by a person working near the fire. Flame length and fireline intensity can be interpreted in terms of suppression capabilities as illustrated in the chart. The curved lines on the fire behavior chart define the range from fires being easily controlled by hand crews, to fires of which control effort will be ineffective at the head of the fire.



### SPECIFIC:

**FUELS:** Mixed conifer forest dominated by lodgepole pine, subalpine fir, Engelmann spruce, and Douglas-fir, with isolated pockets of whitebark pine on ridgetops.


- The southwest winds will provide the most opportunity for growth in exposed fuels on DIVS W & A.
- Beetle-killed lodgepole pine makes up 20-40% of forest canopy in the fire area.
- Heavy dead/down fuels from bug kill, previous wildfires and decadent forests are burning completely. Recent fire scars are inhibiting surface spread where present.
- Valley bottom forests, wet meadows and drainages are green and will discourage surface fire spread. Live fuels on upper slopes continue to cure on all aspects.

**Fine Fuels 4-7%; 100hr (1"-3") 6% unchanged; 1000hr (3"+) 6% unchanged; ERC values at Teepee Pt RAWS have been at record setting highs.**

**AIR OPERATIONS:** Dense smoke is expected to delay air operations in the morning.

**SAFETY:** Haines Index, ERC, LAL, Severe Fire Behavior Potential, Hauling Chart. What is all that? What does all that mean? Look in your IRPG starting on page 64.

## FIRE BEHAVIOR FORECAST

<b>FORECAST NUMBER:</b> 32	<b>TYPE OF FIRE:</b> Wildfire
<b>FIRE NAME:</b> Sapphire Complex	<b>OPERATIONAL PERIOD:</b> Day 09/11/2017 Monday
<b>DATE ISSUED:</b> 09/10/2017	<b>TIME ISSUED:</b> 1700
<b>UNIT:</b> MT-BDF	<b>PREPARED BY:</b> Tim Klukas FBAN 

### INPUTS

**WEATHER SUMMARY:** Areas with dense smoke early in the morning with cloud cover up to 20%. Warmer and drier today. Low Haines of 3 and LAL1.

**Temps:** 78-88°F. **RH** 18-29%. **Winds:** **Ridges:** SW 10 to 15 mph late afternoon. **Valleys:** Upslope early at 3-5 mph increasing SW from 10-15 mph in the morning to evening. \*\*Winds listed are at 20ft level.

### OUTPUTS – FIRE BEHAVIOR

#### GENERAL:

Today's forecasted winds are anticipated to be lighter than yesterday, but the temperatures are going to jump up into the 90 degree range. Less cloud cover overall on the Little Hogback Fire. Lower canyon bottoms in Divn Z and P should be sheltered. Exposed ridgetops have potential for some single tree torching along the NW Little Hogback Ridge.

**Fire behavior outputs are calculated for maximum 20 foot winds of 15 to 20 mph as follows:**

**Spotting:** .2 to .3 miles. **Flame lengths:** 2 to 8 ft. with surface spread. High fuel load timber 2 to 8 ft.

**Grass and Sage:** Rate of Spread .2 to .5 mi/hr. **Closed Timber Litter:** ROS .1 to .2 mi/hr.

**Closed Timber brush:** ROS .1 mi/hr. **Open timber and Grass:** ROS .5 mi/hr. to .75 mi/hr.

**Forecasted Fuels and ERC:** 1 hr. @ 7%, 10 hr @ 7%, 100 hr. @ 8% and 1,000 hr. @ 7%  
**ERC observed at Gird RAWs** of 73 = 90 percentile. **Probability of Ignition** @50% with 30% shading.

#### SPECIFIC:

**Goat Creek and Slide Rock Fires** – Interior pockets may heat up to generate some smokes. Monitor for any for potential flare up around stump holes or deep duff in unburned islands.

#### Little Hogback Fire:

**DIV N-** Interior heat west of Beaver Dip site should have surface fire showing up late in the burn period with no immediate threats. Heat in interior pockets should surface west of the Beaver Fill area.

**DIV O-** Isolated interior heat still showing up on interior ridgelines.

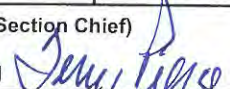
**DIV P-** Pockets of heat along upper slope control lines should still show up and be of concern due to ember fallout being able to reach unburned light surface fuels. Upslope or cross slope winds should put any torching embers back into the burned perimeter.

**Div Z-** Unburned pockets of fuel in Capron, Sheep, and Windlass Gulches will show up earlier in the day due to high temperatures. Flare ups possible around jack pot of fuels. Less potential today for spotting activity that could impact Rock Creek area resources.

**AIR OPERATIONS:** Early morning haze may limit operations. Inversion may break 1100 to 1200 hrs.

**SAFETY:** Today's temperatures are forecasted to be higher. Are you monitoring the environment? What will occur if a sudden drop in relative humidity occurs? Rates of spread could double in some fuel types in steep terrain. Spotting distances could also increase and place embers further out in the unburned fuel. Keep taking weather observations to verify what is going on in the environment.

## Division/Group Assignment List (ICS 204 WF)

<b>1. Incident Name:</b>			<b>3.</b>			
MEYERS SAPPHIRE COMPLEX			<b>Branch:</b>		<b>Division/Group:</b>	
<b>2. Operational Period:</b> 0700 - 2000			<b>I</b>		<b>G</b>	
Date/Time From: 09/11/2017 0700	MON	Date/Time To: 09/11/2017 2000	MON			
<b>4. Operations Personnel</b>						
<b>OPERATIONS CHIEF</b>		PETER MYERS, DAVID WALKER		<b>BRANCH DIRECTOR</b> JEFF SCHARDT		
<b>PLANNING OPS</b>		JAMIE SCHWARTZ, JEREMY BRAND (T)		<b>DIVISION SUPERVISOR</b> JON MCLAUGHLIN, JON FRY (T)		
				<b>AIR OPERATIONS DIRECTOR</b> LYNNE HOWARD BART KICKLIGHTER (T)		
<b>5. Resources Assigned this Period</b>						
Strike Team / Task Force / Resource Designator	LWD	Leader	Number Persons	Drop Off PT./Time	Pick Up PT./Time	
TFLD		JEREMIAH HANKS	1	GOAT SPIKE /0700	GOAT SPIKE/2000	
TFLD		TONY BALLOU	1	GOAT SPIKE /0700	GOAT SPIKE/2000	
TFLD		KEITH HALLORAN	1	GOAT SPIKE /0700	GOAT SPIKE/2000	
HEQB		ARIC RASMUSSEN	1	GOAT SPIKE /0700	GOAT SPIKE/2000	
HEQB	09/13	MONICA THOMAS	1	GOAT SPIKE /0700	GOAT SPIKE/2000	
HEQB ((T)		DAVE MEGORDON	1	GOAT SPIKE /0700	GOAT SPIKE/2000	
O-529 HEQB (T)	09/23	JASON WALKER	1	GOAT SPIKE /0700	GOAT SPIKE/2000	
O-122 FAL 1 TIMBER TRAIL	09/18	SEITZ & CHITWOOD	2	GOAT SPIKE /0700	GOAT SPIKE/2000	
E-930 ENG3				GOAT SPIKE /0700	GOAT SPIKE/2000	
E-482 ENG3				GOAT SPIKE /0700	GOAT SPIKE/2000	
E-187 ENG6 NORTH IDAHO FIRE	09/15	JOHN LAUTENSLAGER	3	GOAT SPIKE /0700	GOAT SPIKE/2000	
E-190 WTS2 CASTLE MTN FIRE	09/21	BOB BASTRUP	1	GOAT SPIKE /0700	GOAT SPIKE/2000	
E-192 WTS2 BIRD WATER #8	09/16	RAY CONGDON	1	GOAT SPIKE /0700	GOAT SPIKE/2000	
E-70 DOZ2 MADDEN TRUCKING	09/15	MOSES MADDEN	2	GOAT SPIKE /0700	GOAT SPIKE/2000	
E-265 DOZ3	09/22	BRAD SMITH	1	GOAT SPIKE /0700	GOAT SPIKE/2000	
E-177 SKG2	09/23	ANDY JOHNSON	2	GOAT SPIKE /0700	GOAT SPIKE/2000	
E-44 SKG3 SLACK	09/15	JAMIE SLACK	1	GOAT SPIKE /0700	GOAT SPIKE/2000	
E-243 EXCA T1 ST. ONGE W/LOWBOY	09/16	EVAN SIPPL	2	GOAT SPIKE /0700	GOAT SPIKE/2000	
<b>8. Division/Group Communication Summary</b>						
Function	Channel	RX Frequency N/W	RX Tone/NAC	TX Frequency N/W	TX Tone/NAC	Mode
COMMAND	10	164.6750N	123.0	169.8125N	123.0	A
TACTICAL	1	168.0500N	123.0	168.0500N	123.0	A
AIR TO GROUND	14	169.1500N		169.1500N		A
AIR TO GROUND	15	169.0875N		169.0875N		A
AIR GUARD	16	168.6250N		168.6250N	110.9	
<b>9. Prepared By (Resource Unit Leader)</b>		<b>Approved By (Planning Section Chief)</b>		<b>Date</b>	<b>Time</b>	
DONNA THOMAS - RESL		TERRY PIERCE - PSC1 		09/10/2017	2100	



## Division/Group Assignment List (ICS 204 WF)

<b>1. Incident Name:</b>			<b>3.</b>			
MEYERS SAPPHIRE COMPLEX			<b>Branch:</b>		<b>Division/Group:</b>	
<b>2. Operational Period:</b> 0700 - 2000			<b>I</b>		<b>G</b>	
Date/Time From: 09/11/2017 0700 MON		Date/Time To: 09/11/2017 2000 MON				
<b>4. Operations Personnel</b>						
<b>OPERATIONS CHIEF</b>		PETER MYERS, DAVID WALKER		<b>BRANCH DIRECTOR</b> JEFF SCHARDT		
<b>PLANNING OPS</b>		JAMIE SCHWARTZ, JEREMY BRAND (T)		<b>DIVISION SUPERVISOR</b> JON MCLAUGHLIN, JON FRY (T)		
				<b>AIR OPERATIONS DIRECTOR</b> LYNNE HOWARD BART KICKLIGHTER (T)		
<b>5. Resources Assigned this Period</b>						
Strike Team / Task Force / Resource Designator		LWD	Leader	Number Persons	Drop Off PT./Time	Pick Up PT./Time
E-262 EXCA T1 WESTERN MONTANA W/LOWBOY		09/19	WYATT LYONS	2	GOAT SPIKE /0700	GOAT SPIKE/2000
E-232 EXCA T2 WELCH BROS W/LOWBOY		09/17	FRANK COSANA	2	GOAT SPIKE /0700	GOAT SPIKE/2000
E-258 EXCA		09/16	BILL NELSON	2	GOAT SPIKE /0700	GOAT SPIKE/2000
E-242 LOG TRUCK JOE THOMAS		09/14	JOE THOMAS	1	GOAT SPIKE /0700	GOAT SPIKE/2000
E-260 SELF LOADING LOG TRUCK		09/17	JUSTIN HULFORD	1	GOAT SPIKE /0700	GOAT SPIKE/2000
E-251 LOG LOADER BRYANT W/LOWBOY		09/14	BRYCE RASMUSSEN	2	GOAT SPIKE /0700	GOAT SPIKE/2000
E-263 LOG LOADER RUSS REED LOGGING W/LOWBOY		09/20	STEVE KINZEL	2	GOAT SPIKE /0700	GOAT SPIKE/2000
E-54 UTV		11/07			GOAT SPIKE /0700	GOAT SPIKE/2000
0-488 AEMT			TERRY WILLIAMSON	1	GOAT SPIKE /0700	GOAT SPIKE/2000
0-415 SOF2 (T)		09/18	WESTON BURCH	1	GOAT SPIKE/0700	GOAT SPIKE/2000
<b>6. Control Operations/Work Assignments:</b>						
Task: Implement suppression rehab on north and east ends of Goat Creek Fire. Mop up all potential threatening hot spots along the fire edge on the east side of Goat Creek.						
Purpose: Minimize acres burned on Division G and complete suppression rehab.						
End State: Execute full suppression fire management strategies using direct protection strategies. Complete fire suppression rehab while minimizing exposure and impacts to critical values at risk.						
<b>7. Special Instructions:</b>						
<b>8. Division/Group Communication Summary</b>						
Function	Channel	RX Frequency N/W	RX Tone/NAC	TX Frequency N/W	TX Tone/NAC	Mode
COMMAND	10	164.6750N	123.0	169.8125N	123.0	A
TACTICAL	1	168.0500N	123.0	168.0500N	123.0	A
AIR TO GROUND	14	169.1500N		169.1500N		A
AIR TO GROUND	15	169.0875N		169.0875N		A
AIR GUARD	16	168.6250N		168.6250N	110.9	
<b>9. Prepared By (Resource Unit Leader)</b>		<b>Approved By (Planning Section Chief)</b>		<b>Date</b>	<b>Time</b>	
DONNA THOMAS - RESL		TERRY PIERCE - PSC1 <i>Terry Pierce</i>		09/10/2017	2100	

## Division/Group Assignment List (ICS 204 WF)

<b>1. Incident Name:</b>		<b>3.</b>	
MEYERS SAPPHIRE COMPLEX		<b>Branch:</b>	<b>Division/Group:</b>
<b>2. Operational Period:</b> 0700 - 2000		<b>I</b>	<b>G</b>
Date/Time From: 09/11/2017 0700 MON	Date/Time To: 09/11/2017 2000 MON		

4. Operations Personnel			
<b>OPERATIONS CHIEF</b>	PETER MYERS, DAVID WALKER	<b>BRANCH DIRECTOR</b>	JEFF SCHARDT
<b>PLANNING OPS</b>	JAMIE SCHWARTZ, JEREMY BRAND (T)	<b>DIVISION SUPERVISOR</b>	JON MCLAUGHLIN, JON FRY (T)
		<b>AIR OPERATIONS DIRECTOR</b>	LYNNE HOWARD BART KICKLIGHTER (T)

**7. Special Instructions:**  
 Complete maintenance of equipment as appropriate and maintain readiness to engage as directed by operations.

**8. Division/Group Communication Summary**

Function	Channel	RX Frequency N/W	RX Tone/NAC	TX Frequency N/W	TX Tone/NAC	Mode
COMMAND	10	164.6750N	123.0	169.8125N	123.0	A
TACTICAL	1	168.0500N	123.0	168.0500N	123.0	A
AIR TO GROUND	14	169.1500N		169.1500N		A
AIR TO GROUND	15	169.0875N		169.0875N		A
AIR GUARD	16	168.6250N		168.6250N	110.9	

<b>9. Prepared By (Resource Unit Leader)</b> DONNA THOMAS - RESL	<b>Approved By (Planning Section Chief)</b> TERRY PIERCE - PSC1 <i>Terry Pierce</i>	<b>Date</b> 09/10/2017	<b>Time</b> 2100
---	--	---------------------------	---------------------

## Division/Group Assignment List (ICS 204 WF)

<b>1. Incident Name:</b>			<b>3.</b>			
MEYERS SAPPHIRE COMPLEX			<b>Branch:</b>		<b>Division/Group:</b>	
<b>2. Operational Period:</b> 0700 - 2000			<b>II</b>		<b>N/O/P</b>	
Date/Time From: 09/11/2017 0700 MON		Date/Time To: 09/11/2017 2000 MON				
<b>4. Operations Personnel</b>						
<b>OPERATIONS CHIEF</b>		PETER L MYERS DAVID P WALKER		<b>DIVISION/GROUP SUPERVISOR</b> GREG TITUS		
<b>PLANNING OPS</b>		JAMIE SCHWARTZ, JEREMY BRAND (T)		<b>AIR OPERATIONS DIRECTOR</b> LYNNE HOWARD BART KICKLIGHTER (T)		
<b>5. Resources Assigned this Period</b>						
Strike Team / Task Force / Resource Designator		LWD	Leader	Number Persons	Drop Off PT./Time	Pick Up PT./Time
O-495 TFLD		09/12	KEVIN PARRISH	1	MEYERS ICP/0700	MEYERS ICP/2000
O-388 TFLD (T)		09/08	LUCAS HARLEY	1	MEYERS ICP/0700	MEYERS ICP/2000
E-9 ENG3 HART VENTURES		09/09	CHRIS OLSEN	3	MEYERS ICP/0700	MEYERS ICP/2000
E-185 ENG3 WILDFIRE RESOURCES		09/13	REAGAN FARLEY	3	MEYERS ICP/0700	MEYERS ICP/2000
E-188 ENG6 XTREME (T)		09/19	JOSH MINSHALL	3	MEYERS ICP/0700	MEYERS ICP/2000
E-126 WTS1 HIGHSIERRA ENTERPRISE		09/12	DALE ISEMAN	1	MEYERS ICP/0700	MEYERS ICP/2000
E-125 WTT2 R&J GRANGER		09/26	GARY KNUDSON	1	MEYERS ICP/0700	MEYERS ICP/2000
E-132 WTS2 PRIMMER TENDER		09/14	REBECCA DAUL	1	MEYERS ICP/0700	MEYERS ICP/2000
O-451 HEQB		09/23	ANTHONY MOORE	2	MEYERS ICP/0700	MEYERS ICP/2000
E-261 EXCA LITTLE BEAR CONTRUCTION W/ LOWBOY		09/20	MIKE HILL	1	MEYERS ICP/0700	MEYERS ICP/2000
E-40 SKDS HALL WOOD PROCESSING		09/16	JEFF WEER	1	MEYERS ICP/0700	MEYERS ICP/2000
E-12 ENG6 CEDAR FIRE		09/12	TED HUNTER	3	MEYERS ICP/0700	MEYERS ICP/2000
E-194 WTS2 BIRD WATER #6		09/16	TODD BENEDICT	1	MEYERS ICP/0700	MEYERS ICP/2000
E-191 WTS2		09/16	MIKE THOMAS	1	MEYERS ICP/0700	MEYERS ICP/2000
E-179 SKDS WILDLAND FIREFIGHTERS		09/17	LARRY PEASE	2	MEYERS ICP/0700	MEYERS ICP/2000
E-182 SKDS ATTACK #3		09/13	CHRIS DESORCY	2	MEYERS ICP/0700	MEYERS ICP/2000
E-119 UTV OUTBACK FIRE 747318					MEYERS ICP/0700	MEYERS ICP/2000
<b>8. Division/Group Communication Summary</b>						
Function	Channel	RX Frequency N/W	RX Tone/NAC	TX Frequency N/W	TX Tone/NAC	Mode
COMMAND	9	166.3375N	123.0	170.3875N	123.0	A
TACTICAL	3	168.6000N	123.0	168.6000N	123.0	A
AIR TO GROUND	14	169.1500N		169.1500N		A
AIR TO GROUND	15	169.0875N		169.0875N		A
AIR GUARD	16	168.6250N		168.6250N	110.9	
<b>9. Prepared By (Resource Unit Leader)</b>		<b>Approved By (Planning Section Chief)</b>		<b>Date</b>	<b>Time</b>	
DONNA THOMAS - RESL		TERRY PIERCE - PSC1 <i>Terry Pierce</i>		09/10/2017	2100	

## Division/Group Assignment List (ICS 204 WF)

<b>1. Incident Name:</b>			<b>3.</b>			
MEYERS SAPPHIRE COMPLEX			<b>Branch:</b>		<b>Division/Group:</b>	
<b>2. Operational Period:</b> 0700 - 2000			<b>II</b>		<b>N/O/P</b>	
Date/Time From: 09/11/2017 0700 MON		Date/Time To: 09/11/2017 2000 MON				
<b>4. Operations Personnel</b>						
<b>OPERATIONS CHIEF</b>		PETER L MYERS DAVID P WALKER		<b>DIVISION/GROUP SUPERVISOR</b> GREG TITUS		
<b>PLANNING OPS</b>		JAMIE SCHWARTZ, JEREMY BRAND (T)		<b>AIR OPERATIONS DIRECTOR</b> LYNNE HOWARD BART KICKLIGHTER (T)		
<b>5. Resources Assigned this Period</b>						
Strike Team / Task Force / Resource Designator		LWD	Leader	Number Persons	Drop Off PT./Time	Pick Up PT./Time
O-218 EMTF		09/13	JOHNNY HYDE	1	MEYERS ICP/0700	MEYERS ICP/2000
0-445 SOF2		09/12	CRAIG COWIE	1	MEYERS ICP/0700	MEYERS ICP/2000
E-3 AMBU THREE RIVERS		10/01	WESTGARD & HAGESTAD	2	DP 49/0700	DP 49/2000
<b>6. Control Operations/Work Assignments:</b>						
Task: Patrol and mop-up along fire edge. Provide support to other Divisions as necessary. Work with READ to identify suppression repair needs.						
Purpose: Minimize acres burned and impacts to resources at risk.						
End State: Execute full suppression. Keep fire north of Rock Creek and west of upper Willow Creek.						
<b>7. Special Instructions:</b>						
Identify and remove excess equipment and back haul as appropriate.						
<b>8. Division/Group Communication Summary</b>						
Function	Channel	RX Frequency N/W	RX Tone/NAC	TX Frequency N/W	TX Tone/NAC	Mode
COMMAND	9	166.3375N	123.0	170.3875N	123.0	A
TACTICAL	3	168.6000N	123.0	168.6000N	123.0	A
AIR TO GROUND	14	169.1500N		169.1500N		A
AIR TO GROUND	15	169.0875N		169.0875N		A
AIR GUARD	16	168.6250N		168.6250N	110.9	
<b>9. Prepared By (Resource Unit Leader)</b>			<b>Approved By (Planning Section Chief)</b>		<b>Date</b>	<b>Time</b>
DONNA THOMAS - RESL			TERRY PIERCE - PSC <i>Terry Pierce</i>		09/10/2017	2100

## Division/Group Assignment List (ICS 204 WF)

1. Incident Name:			3.			
MEYERS SAPPHIRE COMPLEX			II		Branch:  Division/Group:  <b>STAGING - LIL HOGBACK</b>	
2. Operational Period: 0700 - 2000						
Date/Time From: 09/11/2017 0700 MON		Date/Time To: 09/11/2017 2000 MON				
4. Operations Personnel						
OPERATIONS CHIEF		PETER MYERS DAVID WALKER		BRANCH DIRECTOR		JEFF SCHARDT
PLANNING OPS		JAMIE SCHWARTZ JEREMY BRAND (T)		AIR OPERATIONS DIRECTOR		LYNNE HOWARD (T) BART KICKLIGHTER (T)
5. Resources Assigned this Period						
Strike Team / Task Force / Resource Designator		LWD	Leader	Number Persons	Drop Off PT./Time	Pick Up PT./Time
E-79 WTT2 MISSION MTN STAR		09/22	SCOTT HARMON	1	MEYERS ICP/0700	MEYERS ICP/2000
E-267 DUMP TRUCK ALL TERRAIN TRUCKING		09/21	TERRELL THOMAS	1	MEYERS ICP/0700	MEYERS ICP/2000
6. Control Operations/Work Assignments:						
7. Special Instructions: Complete maintenance of equipment as appropriate and maintain readiness to engage as directed by operations.						
8. Division/Group Communication Summary						
Function	Channel	RX Frequency N/W	RX Tone/NAC	TX Frequency N/W	TX Tone/NAC	Mode
COMMAND	8	169.5375N	123.0	164.7125N	123.0	A
COMMAND	9	166.3375N	123.0	170.3875N	123.0	A
TACTICAL	4	168.7250N	123.0	168.7250N	123.0	A
AIR TO GROUND	14	169.1500N		169.1500N		A
AIR TO GROUND	15	169.0875N		169.0875N		A
AIR GUARD	16	168.6250N		168.6250N	110.9	
9. Prepared By (Resource Unit Leader)			Approved By (Planning Section Chief)		Date	Time
DONNA THOMAS - RESL			TERRY PIERCE - PSC1 <i>Terry Pierce</i>		09/10/2017	2100

## Division/Group Assignment List (ICS 204 WF)

<b>1. Incident Name:</b>			<b>3.</b>			
MEYERS SAPPHIRE COMPLEX			<b>Branch:</b>		<b>Division/Group:</b>	
<b>2. Operational Period:</b> 0700 - 2000			<b>II</b>		<b>STRUCTURE</b>	
Date/Time From: 09/11/2017 0700 MON		Date/Time To: 09/11/2017 2000 MON				
<b>4. Operations Personnel</b>						
<b>OPERATIONS CHIEF</b>		PETER MYERS DAVID WALKER		<b>DIVISION/GROUP SUPERVISOR</b>		
<b>PLANNING OPS</b>		JAMIE SCHWARTZ JEREMY BRAND (T)		<b>AIR OPERATIONS DIRECTOR</b>		
				ALISON COONS  LYNNE HOWARD BART KICKLIGHTER (T)		
<b>5. Resources Assigned this Period</b>						
Strike Team / Task Force / Resource Designator		LWD	Leader	Number Persons	Drop Off PT./Time	Pick Up PT./Time
O-244 TFLD		09/23	DAN WHITE	1	MEYERS ICP /0700	MEYERS ICP /2000
E-234.1 TFLD (T)		09/16	JOSH STROHMEYER	1	MEYERS ICP /0700	MEYERS ICP /2000
E-45 ENG4 INLAND FOREST MGMT.		09/12	TERRY MCGOVERN	3	MEYERS ICP /0700	MEYERS ICP /2000
E-124 ENG4 OUTBACK FIREFIGHTING		09/21	KARL PESO	3	MEYERS ICP /0700	MEYERS ICP /2000
E-189 ENG4 NATIONAL WILDLAND FIRE		09/19	LEENKUN BACA	3	MEYERS ICP /0700	MEYERS ICP /2000
E-48 ENG4 ALDER CREEK			ROYD CARR	3	MEYERS ICP/0700	MEYERS ICP/2000
E-133 WTS2 BUTLER ENTERPRISES		09/12	NICK DOLE	1	MEYERS ICP /0700	MEYERS ICP /2000
<b>6. Control Operations/Work Assignments:</b>						
Protect structures in Upper Willow Creek Drainage, Idle Ranch and Trout Retreat. Maintain structure protection equipment at Upper Willow structures. Provide support to adjacent Divisions as needed. Maintain IA readiness, backfill any structure protection needs with Engines from adjacent divisions. Identify and remove excess equipment.						
<b>7. Special Instructions:</b>						
Identify and map structures. Work with liaison Officer to advise and coordinate with with potentially affected private landowners. Gather GPS tracks of all constructed line in Division and turn into the Situation Unit.						
<b>Specific hazard mitigations:</b>						
<ul style="list-style-type: none"> <li>• Review the Wildland Urban interface "watch out" situations on page 12 of the IRPG.</li> <li>• For IA, establish LCES and determine trigger points.</li> </ul>						
<b>8. Division/Group Communication Summary</b>						
Function	Channel	RX Frequency N/W	RX Tone/NAC	TX Frequency N/W	TX Tone/NAC	Mode
COMMAND	8	169.5375N	123.0	164.7125N	123.0	A
COMMAND	9	166.3375N	123.0	170.3875N	123.0	A
TACTICAL	4	168.7250N	123.0	168.7250N	123.0	A
AIR TO GROUND	14	169.1500N		169.1500N		A
AIR TO GROUND	15	169.0875N		169.0875N		A
AIR GUARD	16	168.6250N		168.6250N	110.9	
<b>9. Prepared By (Resource Unit Leader)</b>			<b>Approved By (Planning Section Chief)</b>		<b>Date</b>	<b>Time</b>
DONNA THOMAS - RESL			TERRY PIERCE - PSC1		09/10/2017	2100

## Division/Group Assignment List (ICS 204 WF)

<b>1. Incident Name:</b>			<b>3.</b>			
MEYERS SAPPHIRE COMPLEX			<b>Branch:</b>		<b>Division/Group:</b>	
<b>2. Operational Period:</b> 0700 - 2000			<b>II</b>		<b>Z</b>	
Date/Time From: 09/11/2017 0700 MON		Date/Time To: 09/11/2017 2000 MON				
<b>4. Operations Personnel</b>						
<b>OPERATIONS CHIEF</b>		PETER MYERS DAVID WALKER		<b>DIVISION/GROUP SUPERVISOR</b> ALISON COONS		
<b>PLANNING OPS</b>		JAMIE SCHWARTZ JEREMY BRAND (T)		<b>AIR OPERATIONS DIRECTOR</b> LYNNE HOWARD BART KICKLIGHTER (T)		
<b>5. Resources Assigned this Period</b>						
Strike Team / Task Force / Resource Designator		LWD	Leader	Number Persons	Drop Off PT./Time	Pick Up PT./Time
C-60 CUSTER GALLATIN T2IA		09/11	DAVE DAY	20	MEYERS ICP/0700	MEYERS ICP/2000
O-459 TFLD		09/13	PATRICK KIERAN	1	MEYERS ICP/0700	MEYERS ICP/2000
O-460 TFLD (T)		09/13	TODD AYRES	1	MEYERS ICP/0700	MEYERS ICP/2000
E-33 ENG4 DRAGON FIGHTERS E-41 (T)		09/16	LEVI DUFFORD	3	MEYERS ICP/0700	MEYERS ICP/2000
E-30 ENG6 RED TRUCK WILDFIRE		09/16	RAY BROWN	3	MEYERS ICP/0700	MEYERS ICP/2000
E-234 ENG6 IL-MPF		09/16	SHAUN TRABADO	4	MEYERS ICP/0700	MEYERS ICP/2000
E-122 ENG6 GRIZ ONE		09/21	BOB RAADE	3	MEYERS ICP/0700	MEYERS ICP/2000
E-178 SKG2 SOFT TRACK ATTACK #2		09/11		2	MEYERS ICP/0700	MEYERS ICP/2000
O-457 EMPF		09/19	REX NIELSEN	1	MEYERS ICP/0700	MEYERS ICP/2000
O-462 SOF2		09/15	GARY SEXTON	1	MEYERS ICP/0700	MEYERS ICP/2000
<b>6. Control Operations/Work Assignments:</b>						
Task: Continue mop-up and cold trail fire edge along division break. Utilize aircraft, engines and fire personnel to hold fire north and east of Rock Creek Road. Provide protection to structures.						
Purpose: Minimize acres burned and impacts to resources at risk.						
End State: Execute full suppression. Keep fire east of Rock Creek and minimize impacts to values at risk.						
<b>7. Special Instructions:</b>						
Identify and remove excess equipment and back haul as appropriate.						
<b>8. Division/Group Communication Summary</b>						
Function	Channel	RX Frequency N/W	RX Tone/NAC	TX Frequency N/W	TX Tone/NAC	Mode
COMMAND	8	169.5375N	123.0	164.7125N	123.0	A
TACTICAL	2	168.2000N	123.0	168.2000N	123.0	A
AIR TO GROUND	14	169.1500N		169.1500N		A
AIR TO GROUND	15	169.0875N		169.0875N		A
AIR GUARD	16	168.6250N		168.6250N	110.9	
<b>9. Prepared By (Resource Unit Leader)</b>		<b>Approved By (Planning Section Chief)</b>		<b>Date</b>	<b>Time</b>	
DONNA THOMAS - RESL		TERRY PIERCE - PSC1 <i>Terry Pierce</i>		09/10/2017	2100	

## Division/Group Assignment List (ICS 204 WF)

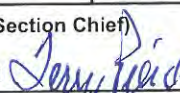
<b>1. Incident Name:</b>			<b>3.</b>			
MEYERS SAPPHIRE COMPLEX			<b>II</b>		<b>NIGHT SHIFT</b>	
<b>2. Operational Period:</b> NIGHT						
Date/Time From: 09/11/2017 1800 MON		Date/Time To: 09/12/2017 0700 TUE				
<b>4. Operations Personnel</b>						
<b>OPERATIONS CHIEF</b>		PETER MYERS DAVID WALKER		<b>DIVISION SUPERVISOR</b>		BERT PLANTE
<b>PLANNING OPS</b>		JAMIE SCHWARTZ JEREMY BRAND (T)		<b>AIR OPERATIONS DIRECTOR</b>		LYNNE HOWARD
<b>5. Resources Assigned this Period</b>						
Strike Team / Task Force / Resource Designator		LWD	Leader	Number Persons	Drop Off PT./Time	Pick Up PT./Time
E-26 ENG4 FIRECO		09/18	CLAYTON CONSTANT	3	MEYERS ICP/1800	MEYERS ICP/0700
E-43 ENG6 TORCH FIRE 62		09/11	BOB MILLER	3	MEYERS ICP/1800	MEYERS ICP/0700
E-44 ENG6 TORCH FIRE 63		09/14	TRINITY KRIVANEC	3	MEYERS ICP/1800	MEYERS ICP/0700
<b>6. Control Operations/Work Assignments:</b>						
Task: Patrol and mop up threats to resources along Rock Creek. Purpose: Minimize area boundary and impacts to resources at risk. End State: Execute full suppression.						
<b>7. Special Instructions:</b>						
<b>8. Division/Group Communication Summary</b>						
Function	Channel	RX Frequency N/W	RX Tone/NAC	TX Frequency N/W	TX Tone/NAC	Mode
TACTICAL	2	168.2000N	123.0	168.2000N	123.0	A
COMMAND	8	169.5375N	123.0	164.7125N	123.0	A
COMMAND	9	166.3375N	123.0	170.3875N	123.0	A
COMMAND	11	171.0375N	123.0	163.8250N	123.0	A
<b>9. Prepared By (Resource Unit Leader)</b>			<b>Approved By (Planning Section Chief)</b>		<b>Date</b>	<b>Time</b>
DONNA THOMAS - RESL			TERRY PIERCE - PSC1 <i>Terry Pierce</i>		09/10/2017	2100



## Division/Group Assignment List (ICS 204 WF)

<b>1. Incident Name:</b>			<b>3.</b>			
MEYERS SAPPHIRE COMPLEX			<b>Branch:</b>		<b>Division/Group:</b>	
<b>2. Operational Period:</b> 0700 - 2000			<b>III</b>		<b>A/E</b>	
Date/Time From: 09/11/2017 0700      MON		Date/Time To: 09/11/2017 2000      MON				
<b>4. Operations Personnel</b>						
<b>OPERATIONS SECTION CHIEF</b>		PETE MYERS DAVID WALKER		<b>DIVISION/GROUP SUPERVISOR</b>		
<b>PLANNING OPS</b>		JAMIE SCHWARTZ, JEREMY BRAND (T)		JOE BURGETT  LYNNE HOWARD BART KICKLIGHTER (T)		
<b>5. Resources Assigned this Period</b>						
Strike Team / Task Force / Resource Designator	LWD	Leader	Number Persons	Drop Off PT./Time	Pick Up PT./Time	
O-416 TFLD	09/11	JOHN ASHCRAFT	1	MEYERS ICP /0700	MEYERS ICP/2000	
O-247 MILLER CREEK MODULE 2 FAL1	09/19	VINCE NUZZO	2	MEYERS ICP /0700	MEYERS ICP/2000	
E-333 ENG4 INLAND FOREST	09/19	JOHN AILPORT	2	MEYERS ICP /0700	MEYERS ICP/2000	
E-39 ENG6 SCOTTS FIRE	09/15	DAVID HENDERSON	3	MEYERS ICP /0700	MEYERS ICP/2000	
E-304 ENG6 CARIBOU TARGHEE 632	09/12	AUSTIN NIELSON	4	MEYERS ICP /0700	MEYERS ICP/2000	
E-41 ENG6 BROCKWAY	09/20	ALLEN BROCKWAY	3	MEYER ICP/0700	MEYER ICP/2000	
E-63 ENG6 HIGH DESERT	09/16	TOM HANKS	2	MEYER ICP/0700	MEYER ICP/2000	
NATIONAL GUARD TASK FORCE	09/13	PHINNEY/STAMPER	2	MEYERS ICP /0700	MEYERS ICP/2000	
E-312 ENGINE 50 ENG 50	09/13	CHRISTOPHER LEUCK	4	MEYERS ICP /0700	MEYERS ICP/2000	
E-313 ENGINE 50 ENG 51	09/13	DAVID LAMBERS	4	MEYERS ICP /0700	MEYERS ICP/2000	
E-314 TENDER 50 WT2	09/13	SARA STAFFORD	2	MEYERS ICP /0700	MEYERS ICP/2000	
E-315 TENDER 51 WT2	09/13	MATHEW MYSCHEWITZ	2	MEYERS ICP /0700	MEYERS ICP/2000	
O-548 SOF2	09/15	DAVID CARTER	1	MEYERS ICP /0700	MEYERS ICP/2000	
O-493 AEMT	09/11	BOBBIE BINK	1	MEYERS ICP /0700	MEYERS ICP/2000	
<b>6. Control Operations/Work Assignments:</b>						
Task: Implement structure protection plan at Moose Lake Subdivision, Lolo Camp, and Helen's Cabin. Mop-up all spots on the east side of road 5106. Mop up previous burnout operation around DP1.						
Purpose: To secure structures at Moose Lake Subdivision, Lolo Camp and Helen's Cabin.						
End State: Protect values at risk and minimize impacts/threats to the Moose Lake Subdivision, Lolo Camp and Helen's Cabin.						
<b>8. Division/Group Communication Summary</b>						
Function	Channel	RX Frequency N/W	RX Tone/NAC	TX Frequency N/W	TX Tone/NAC	Mode
COMMAND	9	168.5750N	114.8	173.6750N	114.8	A
TACTICAL	1	168.0500N	114.8	168.0500N	114.8	A
AIR TO GROUND	14	169.2000N		169.2000N		A
AIR TO GROUND	15	164.7500N		164.7500N		A
AIR GUARD	16	168.6250N		168.6250N	110.9	A
<b>9. Prepared By (Resource Unit Leader)</b>		<b>Approved By (Planning Section Chief)</b>		<b>Date</b>		<b>Time</b>
RICH AUBUCHON - RESL		TERRY PIERCE - PSC1 <i>Terry Pierce</i>		09/10/2017		2100

## Division/Group Assignment List (ICS 204 WF)

<b>1. Incident Name:</b>			<b>3.</b>			
MEYERS SAPPHIRE COMPLEX			<b>Branch:</b>		<b>Division/Group:</b>	
<b>2. Operational Period:</b> 0700 - 2000			<b>III</b>		<b>A/E</b>	
Date/Time From: 09/11/2017 0700	MON	Date/Time To: 09/11/2017 2000	MON			
<b>4. Operations Personnel</b>						
<b>OPERATIONS SECTION CHIEF</b>		PETE MYERS DAVID WALKER		<b>DIVISION/GROUP SUPERVISOR</b>	JOE BURGETT	
<b>PLANNING OPS</b>		JAMIE SCHWARTZ, JEREMY BRAND (T)		<b>AIR OPERATIONS DIRECTOR</b>	LYNNE HOWARD BART KICKLIGHTER (T)	
<b>6. Control Operations/Work Assignments:</b>						
<b>7. Special Instructions:</b>						
Refer to the 220 for aerial water use practices to prevent the spread of aquatic invasives.						
Saw out Road 5106 from DP 1 to DP 19.						
Identify IA resources within division.						
<b>8. Division/Group Communication Summary</b>						
Function	Channel	RX Frequency N/W	RX Tone/NAC	TX Frequency N/W	TX Tone/NAC	Mode
COMMAND	9	168.5750N	114.8	173.6750N	114.8	A
TACTICAL	1	168.0500N	114.8	168.0500N	114.8	A
AIR TO GROUND	14	169.2000N		169.2000N		A
AIR TO GROUND	15	164.7500N		164.7500N		A
AIR GUARD	16	168.6250N		168.6250N	110.9	A
<b>9. Prepared By (Resource Unit Leader)</b>		<b>Approved By (Planning Section Chief)</b>		<b>Date</b>	<b>Time</b>	
RICH AUBUCHON - RESL		TERRY PIERCE - PSC1 		09/10/2017	2100	

## Division/Group Assignment List (ICS 204 WF)

<b>1. Incident Name:</b> MEYERS SAPPHIRE COMPLEX		<b>3.</b>	
<b>2. Operational Period:</b> 0700 - 2000		<b>Branch:</b>  III	<b>Division/Group:</b>  I
Date/Time From: 09/11/2017 0700 MON	Date/Time To: 09/11/2017 2000 MON		


4. Operations Personnel			
<b>OPERATIONS CHIEF</b>	PETER MYERS DAVID WALKER	<b>DIVISION/GROUP SUPERVISOR</b>	JEREMY BRAND JON RUPP (T)
<b>PLANNING OPS</b>	JAMIE SCHWARTZ JEREMY BRAND (T)	<b>AIR OPERATIONS DIRECTOR</b>	LYNNE HOWARD BART KICKLIGHTER (T)
<b>SAFETY OFFICER</b>	MIKE COOK, BRAD LIDELL		

5. Resources Assigned this Period						
Strike Team / Task Force / Resource Designator	LWD	Leader	Number Persons	Drop Off PT./Time	Pick Up PT./Time	
E-142 TIMBER TASK FORCE				EAST FORK SPIKE/0700	EAST FORK SPIKE/2000	
E-142 HE TASK FORCE LEADER	09/14	JEFF HOLLIDAY	1	EAST FORK SPIKE/0700	EAST FORK SPIKE/2000	
E-142 TIMBER FELLER BUNCHER	09/23	SKYE THOMAS	1	EAST FORK SPIKE/0700	EAST FORK SPIKE/2000	
E-142 TIMBER DOZ2	09/14	BRAD MORIGEAU	1	EAST FORK SPIKE/0700	EAST FORK SPIKE/2000	
E-142 TIMBER SKG2	09/14	KEITH BRANDEMIHL	1	EAST FORK SPIKE/0700	EAST FORK SPIKE/2000	
E-142 TIMBER SKD2	09/20	CHASE STOKER	1	EAST FORK SPIKE/0700	EAST FORK SPIKE/2000	
E-142 BLACK DIAMOND LOWBOY	09/27	JREMY FLICK	1	EAST FORK SPIKE/0700	EAST FORK SPIKE/2000	
E-142 K-COMPANY LOWBOY	09/23	MARK CHRISTIAN	1	EAST FORK SPIKE/0700	EAST FORK SPIKE/2000	
E-142 B MORE LOWBOY	09/17	JASON BANGEN	1	EAST FORK SPIKE/0700	EAST FORK SPIKE/2000	
TFLD	09/17	RYAN WOIRHAYE	1	EAST FORK SPIKE/0700	EAST FORK SPIKE/2000	
TFLD (T)	09/08	DEREK WITTENBERG	1	EAST FORK SPIKE/0700	EAST FORK SPIKE/2000	
C-51 LEWIS & CLARK IHC	09/13	MATT HOLMSTROM	21	EAST FORK SPIKE/0700	EAST FORK SPIKE/2000	
E-182 ROCKY MOUNTIAN FIRE ENG3	09/14	RON GENTRY	3	EAST FORK SPIKE/0700	EAST FORK SPIKE/2000	
E-289 GIST ENTERPRISES ENG3	09/19	DONALD WOOD	3	EAST FORK SPIKE/0700	EAST FORK SPIKE/2000	

8. Division/Group Communication Summary						
Function	Channel	RX Frequency N/W	RX Tone/NAC	TX Frequency N/W	TX Tone/NAC	Mode
COMMAND	9	168.5750N	114.8	173.6750N	114.8	A
TACTICAL	3	168.6000N	114.8	168.6000N	114.8	A
AIR TO GROUND	14	169.2000N		169.2000N		A
AIR TO GROUND	15	164.7500N		164.7500N		A
AIR GUARD	16	168.6250N		168.6250N	110.9	A

<b>9. Prepared By (Resource Unit Leader)</b> RICH AUBUCHON - RESL	<b>Approved By (Planning Section Chief)</b> TERRY PIERCE - PSC1 <i>Terry Pierce</i>	<b>Date</b> 09/10/2017	<b>Time</b> 2100
--	--	---------------------------	---------------------

## Division/Group Assignment List (ICS 204 WF)

<b>1. Incident Name:</b>			<b>3.</b>			
MEYERS SAPPHIRE COMPLEX			<b>Branch:</b>		<b>Division/Group:</b>	
<b>2. Operational Period:</b> 0700 - 2000			III		I	
Date/Time From: 09/11/2017 0700	MON	Date/Time To: 09/11/2017 2000	MON			
<b>4. Operations Personnel</b>						
<b>OPERATIONS CHIEF</b>		PETER MYERS DAVID WALKER		<b>DIVISION/GROUP SUPERVISOR</b>		
				JEREMY BRAND JON RUPP (T)		
<b>PLANNING OPS</b>		JAMIE SCHWARTZ JEREMY BRAND (T)		<b>AIR OPERATIONS DIRECTOR</b>		
				LYNNE HOWARD BART KICKLIGHTER (T)		
<b>SAFETY OFFICER</b>		MIKE COOK, BRAD LIDELL				
<b>5. Resources Assigned this Period</b>						
Strike Team / Task Force / Resource Designator		LWD	Leader	Number Persons	Drop Off PT./Time	Pick Up PT./Time
E-340 VERNON E26 ENG3		09/12	JERALD WHIPPLE	3	EAST FORK SPIKE/0700	EAST FORK SPIKE/2000
E-288 HOTSPOT FIRE ENG5		09/20	CATHY PALIN	3	EAST FORK SPIKE/0700	EAST FORK SPIKE/2000
E-268 ROCKY MOUNTAIN TIMBER ENG6		09/13	BRIAN CAHOON	3	EAST FORK SPIKE/0700	EAST FORK SPIKE/2000
E-341 CPTPA E16ENG6		09/09	DOUG COURSON	4	EAST FORK SPIKE/0700	EAST FORK SPIKE/2000
E-342 METAL WORKS ENG6		09/21	EUGENE WEASEL	3	EAST FORK SPIKE/0700	EAST FORK SPIKE/2000
O-663 HEQB (T)		09/22	MIKE NOVA	1	EAST FORK SPIKE/0700	EAST FORK SPIKE/2000
E-59 CC STACKING DOZ2		09/12	CRAIG CORNELL	1	EAST FORK SPIKE/0700	EAST FORK SPIKE/2000
E-1 CC STACKING DOZ3		09/16	BILL WALKER	1	EAST FORK SPIKE/0700	EAST FORK SPIKE/2000
E-5 SHERRILL LOGGING FELLER BUNCHER		09/15	JESSE SHERRILL	1	EAST FORK SPIKE/0700	EAST FORK SPIKE/2000
E-136 AC LOGGING SKD2		09/17	ALAN CONOVER	1	EAST FORK SPIKE/0700	EAST FORK SPIKE/2000
E-137 INTERMOUNTAIN SKD2		09/16	WILLIAM JOHNSON	1	EAST FORK SPIKE/0700	EAST FORK SPIKE/2000
E-229 TIMBER SOLUTIONS FORW		09/10	PAUL LOVAAS	1	EAST FORK SPIKE/0700	EAST FORK SPIKE/2000
E-253 TIMBER TRAIL EXCA		09/19	MIKE THORSON	1	EAST FORK SPIKE/0700	EAST FORK SPIKE/2000
E-62 FLANAGAN FORWARDER		09/19	DALE FLANAGAN	1	EAST FORK SPIKE/0700	EAST FORK SPIKE/2000
<b>8. Division/Group Communication Summary</b>						
Function	Channel	RX Frequency N/W	RX Tone/NAC	TX Frequency N/W	TX Tone/NAC	Mode
COMMAND	9	168.5750N	114.8	173.6750N	114.8	A
TACTICAL	3	168.6000N	114.8	168.6000N	114.8	A
AIR TO GROUND	14	169.2000N		169.2000N		A
AIR TO GROUND	15	164.7500N		164.7500N		A
AIR GUARD	16	168.6250N		168.6250N	110.9	A
<b>9. Prepared By (Resource Unit Leader)</b>			<b>Approved By (Planning Section Chief)</b>		<b>Date</b>	<b>Time</b>
RICH AUBUCHON - RESL			TERRY PIERCE - PSC1 		09/10/2017	2100

## Division/Group Assignment List (ICS 204 WF)

<b>1. Incident Name:</b>				<b>3.</b>		
MEYERS SAPPHIRE COMPLEX				Branch:		Division/Group:
<b>2. Operational Period:</b> 0700 - 2000				III		I
Date/Time From: 09/11/2017 0700 MON		Date/Time To: 09/11/2017 2000 MON				
<b>4. Operations Personnel</b>						
<b>OPERATIONS CHIEF</b>		PETER MYERS DAVID WALKER		<b>DIVISION/GROUP SUPERVISOR</b>		JEREMY BRAND JON RUPP (T)
<b>PLANNING OPS</b>		JAMIE SCHWARTZ JEREMY BRAND (T)		<b>AIR OPERATIONS DIRECTOR</b>		LYNNE HOWARD BART KICKLIGHTER (T)
<b>SAFETY OFFICER</b>		MIKE COOK, BRAD LIDELL				
<b>5. Resources Assigned this Period</b>						
Strike Team / Task Force / Resource Designator		LWD	Leader	Number Persons	Drop Off PT./Time	Pick Up PT./Time
E-129 FLANAGAN FELLER BUNCHER		09/19	JAY FLANAGAN	1	EAST FORK SPIKE/0700	EAST FORK SPIKE/2000
E-296 RAC LOGGING CHIPPER		09/11	RON COOPER	1	EAST FORK SPIKE/0700	EAST FORK SPIKE/2000
O-321 EMTF		09/12	CHRIS NOON	1	EAST FORK SPIKE/0700	EAST FORK SPIKE/2000
O-537 EMTB		09/15	OLENA GARTNER	1	EAST FORK SPIKE/0700	EAST FORK SPIKE/2000
<b>6. Control Operations/Work Assignments:</b>						
Task: In Billy Springer Memorial and Bonanza Subdivisions, continue structure protection measures. Finish and improve hand and mechanical line around subdivisions and threatened structures.						
Purpose: To secure structures and private property in the Bill Springer Memorial and Bonanza Subdivisions.						
End State: To protect values at risk and minimize impacts/threats in the Billy Springer Memorial and Bonanza Subdivisions.						
<b>7. Special Instructions:</b>						
Refer to the 220 for aerial water use practices to prevent the spread of aquatic invasives.						
Identify IA resources within division.						
<b>8. Division/Group Communication Summary</b>						
Function	Channel	RX Frequency N/W	RX Tone/NAC	TX Frequency N/W	TX Tone/NAC	Mode
COMMAND	9	168.5750N	114.8	173.6750N	114.8	A
TACTICAL	3	168.6000N	114.8	168.6000N	114.8	A
AIR TO GROUND	14	169.2000N		169.2000N		A
AIR TO GROUND	15	164.7500N		164.7500N		A
AIR GUARD	16	168.6250N		168.6250N	110.9	A
<b>9. Prepared By (Resource Unit Leader)</b>			<b>Approved By (Planning Section Chief)</b>		<b>Date</b>	<b>Time</b>
RICH AUBUCHON - RESL			TERRY PIERCE - PSC1 <i>Terry Pierce</i>		09/10/2017	2100

## Division/Group Assignment List (ICS 204 WF)

<b>1. Incident Name:</b>			<b>3.</b>			
MEYERS SAPPHIRE COMPLEX			<b>Branch:</b>		<b>Division/Group:</b>	
<b>2. Operational Period:</b> 0700 - 2000			<b>III</b>		<b>K</b>	
Date/Time From: 09/11/2017 0700 MON		Date/Time To: 09/11/2017 2000 MON				
<b>4. Operations Personnel</b>						
<b>OPERATIONS CHIEF</b>		PETER MYERS DAVID WALKER		<b>DIVISION/GROUP SUPERVISOR</b>		
<b>PLANNING OPS</b>		JAMIE SCHWARTZ JEREMY BRAND (T)		SHANE STURGILL  LYNNE HOWARD, BART KICKLIGHTER (T)		
<b>5. Resources Assigned this Period</b>						
Strike Team / Task Force / Resource Designator		LWD	Leader	Number Persons	Drop Off PT./Time	Pick Up PT./Time
O-696 TFLD		09/23	ROBERT VICK	1	MEYERS ICP/0700	MEYERS ICP/2000
E-305 NORTHWEST FIRE 0710 ENG6		09/14	MARCUS JANES	3	MEYERS ICP/0700	MEYERS ICP/2000
E-86 AEGIS ENG6		09/14	ROY VARNEY	3	MEYERS ICP/0700	MEYERS ICP/2000
E-306 GREEN VALLEY 150 ENG6		09/14	MICHAEL CARRAFA	3	MEYERS ICP/0700	MEYERS ICP/2000
E-143 MORANVILLE WTT2		09/23	CARY TAYLOR	1	MEYERS ICP/0700	MEYERS ICP/2000
E-287 CASTLE MOUNTAIN ENG3		09/07	RHONDINA TSOSIE	3	MEYERS ICP/0700	MEYERS ICP/2000
E-307 CENTRAL AZ FIRE 548 ENG6		09/14	MATHEW MAYHALL	3	MEYERS ICP/0700	MEYERS ICP/2000
O-246 MILLER CREEK MODULE 3 FAL1		09/21	DEREK POFF	2	MEYERS ICP/0700	MEYERS ICP/2000
O-563 EMPF		09/14	MELANIE R MILLER	1	MEYERS ICP/0700	MEYERS ICP/2000
SOF2			DAVID CARTER	1	MEYERS ICP/0700	MEYERS ICP /2000
<b>6. Control Operations/Work Assignments:</b>						
Task: Continue to evaluate potential opportunities, for point protection, conduct burnout operations where feasible.						
Purpose: To secure structures and private property in the Frog Pond Basin.						
End State: Protect values at risk and minimize impacts and threats to Frog Pond Basin while minimizing exposure and impacts to critical values at risk.						
<b>7. Special Instructions:</b>						
<b>8. Division/Group Communication Summary</b>						
Function	Channel	RX Frequency N/W	RX Tone/NAC	TX Frequency N/W	TX Tone/NAC	Mode
COMMAND	9	168.5750N	114.8	173.6750N	114.8	A
TACTICAL	2	168.2000N	114.8	168.2000N	114.8	A
AIR TO GROUND	14	169.2000N		169.2000N		A
AIR TO GROUND	15	164.7500N		164.7500N		A
AIR GUARD	16	168.6250N		168.6250N	110.9	A
<b>9. Prepared By (Resource Unit Leader)</b>		<b>Approved By (Planning Section Chief)</b>			<b>Date</b>	<b>Time</b>
RICH AUBUCHON - RESL		TERRY PIERCE - PSC1 <i>Terry Pierce</i>			09/10/2017	2100

## Division/Group Assignment List (ICS 204 WF)

<b>1. Incident Name:</b>			<b>3.</b>			
MEYERS SAPPHIRE COMPLEX			<b>Branch:</b>		<b>Division/Group:</b>	
<b>2. Operational Period:</b> 0700 - 2000			<b>III</b>		<b>R/T</b>	
Date/Time From: 09/11/2017 0700	MON	Date/Time To: 09/11/2017 2000	MON			
<b>4. Operations Personnel</b>						
<b>OPS SECTION CHIEF</b>		PETER MYERS, DAVID WALKER		<b>DIVISION/GROUP SUPERVISOR</b>	BRIAN BROWNING JACOB JERESEK (T)	
<b>PLANNING OPS</b>		JAMIE SCHWARTZ, JEREMY BRAND (T)		<b>AIR OPERATIONS DIRECTOR</b>	LYNN HOWARD BART KICKLIGHTER (T)	
<b>5. Resources Assigned this Period</b>						
Strike Team / Task Force / Resource Designator		LWD	Leader	Number Persons	Drop Off PT./Time	Pick Up PT./Time
C-56 BITTERROOT IHC		09/15	MATTHEW MICHALISZYN	21		
B-D T2IA		09/19	QUIGLEY/DICKINSON (T)	20	MEYERS ICP/0700	MEYERS ICP/2000
E-63 AC LOGGING SKG3		09/21	GUY BUYAN		MEYER ICP/0700	MEYER ICP/2000
E-235 CASTLE MOUNTAIN FIRE WT2		09/20	ARTIE JAMES	1	MEYER ICP/0700	MEYER ICP /2000
E-308 BERTHOUD ENG6		09/14	SHANE PRIME	3	MEYER ICP/0700	MEYER ICP/2000
E-309 WORLAND 63 ENG6		09/13	BEN GOMEZ	3	MEYER ICP/0700	MEYER ICP/2000
EMTF		09/14	CHRIS ORR	1	MEYER ICP/0700	MEYER ICP/2000
<b>6. Control Operations/Work Assignments:</b>						
Task: Patrol for spot fires and slop overs; mop up 100%. Mop up perimeter of burnout 30-300 feet, where safe to do so, to secure the fire line. Monitor spot fire in Senate Creek.						
Purpose: Minimize acres burned in DIV R/T.						
End State: Execute full suppression fire management strategies using indirect protection tactics to guide fire into man-made or natural barriers, while minimizing firefighter exposure and impacts to critical values at risk.						
<b>7. Special Instructions:</b>						
Refer to the 220 for aerial water use practices to prevent the spread of aquatic invasives.						
Identify IA resources within division.						
<b>8. Division/Group Communication Summary</b>						
Function	Channel	RX Frequency N/W	RX Tone/NAC	TX Frequency N/W	TX Tone/NAC	Mode
COMMAND	7	168.0750N	114.8	170.4250N	114.8	A
TACTICAL	4	166.7250N	114.8	166.7250N	114.8	A
AIR TO GROUND	14	169.2000N		169.2000N		A
AIR TO GROUND	15	164.7500N		164.7500N		A
AIR GUARD	16	168.6250N		168.6250N	110.9	A
<b>9. Prepared By (Resource Unit Leader)</b>			<b>Approved By (Planning Section Chief)</b>		<b>Date</b>	<b>Time</b>
RICH AUBUCHON - RESL			TERRY PIERCE - PSC1		09/10/2017	2100

## Division/Group Assignment List (ICS 204 WF)

<b>1. Incident Name:</b>		<b>3.</b>				
MEYERS SAPPHIRE COMPLEX		<b>III</b>		<b>W</b>		
<b>2. Operational Period:</b> 0700 - 2000						
Date/Time From: 09/11/2017 0700	MON	Date/Time To: 09/11/2017 2000	MON			
<b>4. Operations Personnel</b>						
<b>OPS SECTIONS CHIEF</b>	PETER MYERS DAVID WALKER	<b>DIVISION/GROUP SUPERVISOR</b>	KELLY CORNWALL			
<b>PLANNING OPS</b>	JAMIE SCHWARTZ JEREMY BRAND (T)	<b>AIR OPERATIONS DIRECTOR</b>	LYNNE HOWARD BART KICKLIGHTER (T)			
<b>5. Resources Assigned this Period</b>						
Strike Team / Task Force / Resource Designator	LWD	Leader	Number Persons	Drop Off PT./Time	Pick Up PT./Time	
E-123 ENG6	09/20	JAMES DOUGLES	2	MEYERS ICP/0700	MEYERS ICP/2000	
<b>6. Control Operations/Work Assignments:</b>						
<p>Task: Scout, map and acquire intel on previous preparations for contingency line. Assemble needs and time lines to complete if Management Action Points are breached</p> <p>Purpose: Minimize area boundary and impacts to resources at risk.</p> <p>End State: Execute full suppression.</p>						
<b>7. Special Instructions:</b>						
Complete maintenance of equipment as appropriate and maintain readiness to engage as directed by operations.						
<b>8. Division/Group Communication Summary</b>						
Function	Channel	RX Frequency N/W	RX Tone/NAC	TX Frequency N/W	TX Tone/NAC	Mode
COMMAND	7	168.0750N	114.8	170.4250N	114.8	A
TACTICAL	5	166.7750N	114.8	166.7750N	114.8	A
AIR TO GROUND	14	169.2000N		169.2000N		A
AIR TO GROUND	15	164.7500N		164.7500N		A
AIR GUARD	16	168.6250N		168.6250N	110.9	A
<b>9. Prepared By (Resource Unit Leader)</b>		<b>Approved By (Planning Section Chief)</b>		<b>Date</b>	<b>Time</b>	
RICH AUBUCHON - RESL		TERRY PIERCE - PSC1 <i>Terry Pierce</i>		09/10/2017	2100	



# INCIDENT RADIO COMMUNICATIONS PLAN (ICS 205)

<b>1. Incident Name:</b> MEYERS SAPPHIRE COMPLEX	<b>2. Date/Time Prepared:</b> Date: 09/10/2017 Time: 1900	<b>3. Operational Period:</b> Date/Time From: 09/11/2017 0700 Date/Time To: 09/11/2017 2000	MON MON
---	---	---	------------

4. Basic Radio Channel Use:										
Zone Group	Ch #	Function	Channel Name/Trunked Radio System Talkgroup	Assignment	RX Freq	RX Tone/NAC	TX Freq	TX Tone/NAC	Mode (A,D, or M)	Remarks
MEYERS	1	TACTICAL	TAC 1	DIV A/E	168.0500N	114.8	168.0500N	114.8	A	
MEYERS	2	TACTICAL	TAC 2	DIV K	168.2000N	114.8	168.2000N	114.8	A	
MEYERS	3	TACTICAL	TAC 3	DIV I	168.6000N	114.8	168.6000N	114.8	A	
MEYERS	4	TACTICAL	TAC 4	DIV R/T	166.7250N	114.8	166.7250N	114.8	A	
MEYERS	5	TACTICAL	TAC 5	DIV W	166.7750N	114.8	166.7750N	114.8	A	
MEYERS	6	TACTICAL	TAC 6		168.2500N	114.8	168.2500N	114.8	A	
MEYERS	7	COMMAND	CMD 3	N. OF THE FIRE	168.0750N	114.8	170.4250N	114.8	A	FIRELINE TO ICP - EMERINE MT.
MEYERS	8	COMMAND	CMD 4	W. OF THE FIRE	170.4125N	114.8	165.9625N	114.8	A	FIRELINE TO ICP - BARE HILL
MEYERS	9	COMMAND	CMD 5	S. OF THE FIRE	168.5750N	114.8	173.6750N	114.8	A	FIRELINE TO ICP - SENATE MT.
MEYERS	10	COMMAND	CMD 6	SE OF THE FIRE	173.0375N	114.8	167.3250N	114.8	A	FIRELINE TO ICP - TINY MT.
MEYERS	11	COMMAND	B-D / EMERINE	B-D FOREST NET	171.0000N		170.3500N	146.2	A	B-D FOREST NET BACKUP - EMERINE
MEYERS	12	TACTICAL	TAN	EMS	155.3400N		155.3400N	156.7	A	AIR AMBULANCE
MEYERS	13	TACTICAL	WHITE	EMS	155.2800N		155.2800N	156.7	A	GROUND AMBULANCE
MEYERS	14	AIR TO GROUND	A/G PRIMARY	ALL DIVISIONS	169.2000N		169.2000N		A	AIR TO GROUND PRIMARY
MEYERS	15	AIR TO GROUND	A/G SECONDARY	ALL DIVISIONS	164.7500N		164.7500N		A	AIR TO GROUND SECONDARY
MEYERS	16	AIR GUARD	AIRGUARD	ALL DIVISIONS	168.6250N		168.6250N	110.9	A	AIR EMERGENCY ONLY

**5. Special Instructions:**

<b>6. Prepared By</b> (Communications Unit Leader)	Name: JERRY W. PATRICK
Signature:	Date/Time: 09/10/2017 1900

ICS 205	IAP Page
---------	----------


# INCIDENT RADIO COMMUNICATIONS PLAN (ICS 205)

<b>1. Incident Name:</b> MEYERS SAPPHIRE COMPLEX		<b>2. Date/Time Prepared:</b> Date: 09/10/2017 Time: 1900		<b>3. Operational Period:</b> 0700 - 2000	
		Date/Time From: 09/11/2017 0700		Date/Time To: 09/11/2017 2000	
		MON		MON	

Zone Group	Ch #	Function	Channel Name/Trunked Radio System Talkgroup	Assignment	RX Freq	RX Tone/NAC	TX Freq	TX Tone/NAC	Mode (A, D, or M)	Remarks
SAPPHIRE	1	TACTICAL	TAC 1	DIV G	168.0500N	123.0	168.0500N	123.0	A	BRANCH I
SAPPHIRE	2	TACTICAL	TAC 2	DIV Z	168.2000N	123.0	168.2000N	123.0	A	LITTLE HOGBACK - BRANCH II
SAPPHIRE	3	TACTICAL	TAC 3	DIV N/O/P	168.6000N	123.0	168.6000N	123.0	A	LITTLE HOGBACK - BRANCH II
SAPPHIRE	4	TACTICAL	TAC 4	STAGING	168.7250N	123.0	168.7250N	123.0	A	LITTLE HOGBACK - BRANCH II
SAPPHIRE	5	TACTICAL	TAC 5	STRUCTURE	166.7750N	123.0	166.7750N	123.0	A	LITTLE HOGBACK - BRANCH II
SAPPHIRE	6	TACTICAL	TAC 6		168.2500N	123.0	168.2500N	123.0	A	
SAPPHIRE	7	COMMAND	CMD 7	ALL DIVISIONS	168.1000N	123.0	170.4500N	123.0	A	CMD RPT FOR GOAT CREEK AND SLIDE ROCK FIRES - WEST
SAPPHIRE	8	COMMAND	CMD 8	ALL DIVISIONS	169.5375N	123.0	164.7125N	123.0	A	CMD RPT FOR LITTLE HOGBACK FIRE - WEST
SAPPHIRE	9	COMMAND	CMD 9	ALL DIVISIONS	166.3375N	123.0	170.3875N	123.0	A	CMD RPT FOR LITTLE HOGBACK FIRE - EAST
SAPPHIRE	10	COMMAND	CMD 10	ALL DIVISIONS	164.6750N	123.0	169.8125N	123.0	A	CMD RPT FOR GOAT CREEK AND SLIDE ROCK FIRES - EAST
SAPPHIRE	11	COMMAND	CMD 11	ALL DIVISIONS	171.0375N	123.0	163.8250N	123.0	A	SE END OF LITTLE HOGBACK
SAPPHIRE	12	TACTICAL	TAN	EMS	155.3400N	123.0	155.3400N	156.7	A	AIR AMBULANCE
SAPPHIRE	13	QUIGG RPT	QUIGG RPT	IA	164.7000N		164.1000N	131.8	A	LOLO FOREST RPT
SAPPHIRE	14	AIR TO GROUND	AG 1	AIR ATTACK	169.1500N		169.1500N		A	COMMUNICATE WITH AIR ATTACK
SAPPHIRE	15	AIR TO GROUND	AG 2	BRANCHES I AND II	169.0875N		169.0875N		A	
SAPPHIRE	16	AIR GUARD	AIRGRD	ALL DIVISIONS	168.6250N		168.6250N	110.9	A	AIR EMERGENCY OR INITIAL CONTACT

5. Special Instructions:

6. Prepared By: (Communications Unit Leader) Name: JERRY W. PATRICK

ICS 205 IAP Page Signature:  Date/Time: 09/10/2017 1900

FINAL

# AIR OPERATIONS SUMMARY

Prepared By: Bart Kicklighter AOB/D(T)

Prepared Date/Time: 9/10/2017 1800

<b>1. INCIDENT NAME:</b> Meyers Sapphire Complex	<b>2. OPERATIONAL PERIOD DATE:</b> 9/11/2017	<b>START TIME:</b> 700	<b>END TIME:</b> 2200	<b>SUNRISE:</b> 0706 @ Helibase	<b>SUNSET:</b> 1954 @ Helibase
---	---	---------------------------	--------------------------	------------------------------------	-----------------------------------

**3. REMARKS (Safety Notes, Hazards):** Secondary A/A used as assigned by Air Attack. Secondary A/G used as needed. HOTSY BUCKET WASHOUT: (1) Beaverhead-Deerlodge (Meyers and Sapphire): When conducting buckets/snorkel work with Helicopters, ensure that only one water source is used at a time. If utilizing multiple water sources, ensure buckets/snorkels are washed between the use of different sources. (2) LOLO PART OF SAPHIRE: Required when switching from one drainage to another (3) No wash required when switching dips while on the Bitterroot (4) Bucket wash when switching between Lolo or B-D and Bitterroot. (5) NEVER DIP FROM CLARK FORK.

**4. READY ALERT AIRCRAFT**  
Incident Medevac Resources:  
THE AS350B3 (litter-capable) 407MC Bell 407 (backboard only)  
Litter Kit at Meyers HB  
SHORTHAUL Order via A/C Desk.  
\*\* 401HQ @ Lincoln, MT  
73BH @ Plains  
\*\* Hoist/VVG: Two Bear Air Civilian  
A/C Medical (Tan): 155.3400N Tone TX 156.7  
A/G Hospital (White): 155.2800

**5. Airspace Information:**  
Sapphire TFR # 719864  
Freq: 118.2250  
Radius: POLYGON  
Altitude: 12,000 MSL  
Meyers TFR: 715927  
Freq: 121.0750  
Radius: POLYGON  
Altitude: 11,000

6. PERSONNEL	NAME	PHONE #	7. FREQUENCIES	VHF-AM	VHF-FM
--------------	------	---------	----------------	--------	--------

<b>6a. Sapphire Meyers Complex</b>					
Air Ops Branch Director	Lynne Howard	678-699-3266	Sapphire A/G PRIMARY A/G 1		169.1500N
Air Ops Branch Director (Trainee)	Bart Kicklighter	828-460-6559	Sapphire A/G SECOND A/G 2		169.08750N
Air Support Group Supervisor	Teresa Williamson	720-537-4972	Sapphire A/A FW		118.2250
Air Tactical Group Supervisor	Larry Mars	479-857-9663	Sapphire A/A RW		123.4000
Air Ops Yurt Phone	AOBD/ASGS	406-859-9129			

**6c. Common Ops Contacts**

Meyers Helibase Manager	Brad Bernardy	720-537-4928	<b>7b. Meyers Freqs</b>		
			Meyers A/G PRIMARY (A/G 1)		169.2000
			Meyers A/G SECOND (A/G 2)		164.7500
			Meyers A/A FW		121.0750
Meyers Helibase Trailer Phone		406-859-9133	Meyers A/A RW		126.6250
Mixmaster Miner Mud	Marty Posey	575-746-7320	Command - Helibase to ATGS		168.075 Rx - 170.425 Tx 114.8
Missoula (Lolo NF)	A/C Desk	406-829-7060	<b>7c. Common Freqs</b>		
Dillon (B-D NF)	A/C Desk	406-683-3975/3827	Deck		163.1000

**8. AERIAL SUPERVISION**

FAA #	REQ #	TY	MAKE/MODEL	BASE	START	AVAIL	REMARKS	
							National Fit Follow	168.6500 Tx/Rx 110.9
							Air Guard	168.625 TX 110.9
							DNRC A/G (Yellow)	166.9000N or 151.2200 Rx/Tx
							Takeoff/Landing (TOLC)	172.6500N

Signature: /s/ Lynne Howard, AOB/D

NOTE: Air Tactical and Platforms TBD on Case By Case Need

9. HELICOPTERS								7d. Initial Attack Freqs		
FAA N#	REQ #	TY	MAKE/ MODEL	BASE	BRIEF	AVAIL	REMARKS			
116	A-7	1	KMax	Meyers	800	830	Restricted; Quick Fill	Deerodge Direct	171.425 RXTX TT 131.8	
17HX	A-67	2	Bell 205++	Meyers	800	830	Standard	B-D 1A Air/Air	171.000 RX/TX TT 141.3	
111DR	A-87	2	B-205	Meyers	800	830	Restricted	B-D 1A AVG #29 (pri)	132.7000	
7HE	A-14	3	AS-350B3	H-31	800	830	Standard; litter-capable	B-D 1A AVG #52 (sec)	166.9000 N	
407MC	A-69	3	Bell 407	Meyers	800	830	Standard; backboard only	B-D 1A AVG #53 (alt)	168.3875 N	
352TA	A-37	3	AS-350B3	Meyers	800	830	Standard	Lolo East Direct	168.6500N 110.9 Rx/Tx	
<b>9. FIXED WING</b>								Lolo East AVG	166.5000N	
								Lolo West Direct	164.9125N 123.0 Tx	
								Lolo West AVG (AVG 05)	166.7500N	
TBD				Butte			ATGS Platform	Bitterroot Forest AVG	Rx 168.3875 Tx 168.3875	
								Bitterroot A/A	125.175	
								Bitterroot Dispatch Ch 1	Rx 168.750 Tx 168.750 Tn 131.8	
								Bitterroot Dispatch Ch 2	Rx 169.625 Tx 169.625 Tn 146.2	
<b>10. MISSIONS - MEYERS</b>										
<b>Type</b>								<b>TIME</b>	<b>From</b>	<b>To</b>
Bucket drops as requested								TBD	Meyers Helibase	Fire
Recon as requested								TBD	Meyers Helibase	Fire
Aerial Ignition possible								TBD	Meyers Helibase	Fire
								TBD	Meyers Helibase	Fire
<b>10. MISSIONS - SAPPHIRE</b>										
<b>Type</b>								<b>TIME</b>	<b>From</b>	<b>To</b>
Bucket Support as requested in DIVS Z to hold/check firing operation								TBD	Meyers Helibase	Fire
ATGS to monitor Sliderock and support Sapphire as requested								TBD	Meyers Helibase	Fire
Recon as requested								TBD	Meyers Helibase	Fire
Aerial Ignition as requested								TBD	Meyers Helibase	Fire

Signature: /s/ Lyne Howard, AOB

**Meyers ICP Fire Phone List**  
**Southern Area Incident Management Team**  
**Mike Dueitt - Incident Commander**

POSITION	INCIDENT PHONE
Incident Commander	(406) 859-9101
Liaison Officer	(406) 859-9102
Safety Officer	(406) 859-9129
Public Information Officer	(406) 859-9107
Operations Section Chief	(406) 859-9129
Operations Section Chief	(406) 859-9129
Air Operations Branch Director	(406) 859-9129
Meyers Helibase	(406) 859-9133
Planning Section Chief	(406) 859-9106
Human Resource Specialist	(503) 307 8820
Logistics Section Chief	(406) 859-9103
Communications	(406) 859-9099
Facilities Unit Leader	(406) 859-9130
Ground Support	(406) 859-9097
Ground Support	(406) 859-9098
Medical Unit Leader	(406) 859-9100
Finance Section Chief	(406) 859-9092
Ordering Manager	(406) 859-9090
Ordering	(406) 859-9091
Resource Unit Leader	(406) 859-9106
Demob Unit Leader	(406) 859-9106
Security	(406) 859-9130
Plans FAX	(406) 859-9105



## HEALTH AND SAFETY MESSAGE

*“We don’t plan on luck to be safe, we plan on good risk management and good decisions”....the Red Team*

**INCIDENT:** Meyers-Sapphire Complex

**DATE:** Monday, September 11<sup>th</sup>, 2017

**Major Hazards and Risks:** Fatigue, Driving, Complacency, Dehydration

**Fatigue:** With the recent fire activity and the length of the 2017 fire season in general, resources have had to work *extended duty hours* for numerous days and numerous rotations. Make sure your work rest ratio and guidelines are being adhered to. *Proper diet and rest* will eliminate the onset of extreme fatigue over long periods of time.

**Driving:** *Work and school traffic resume today on your roads. Drive at or below speed limits. Slow down and use spotters when necessary.* Be aware of all the heavy equipment working in your division and give it enough space to operate safely.

**Complacency:** For several days, we have discussed Initial Attack responsibilities. Continue to prepare with a *focus on safe operations*. Identify Wildland Urban Interface during initial attack. . *Size up other WUI hazards – IRPG pages 12-16.* Keep away from distractions, boredom and horse play.

**Dehydration:** Make sure *you are drinking plenty of fluids*, It’s recommended that sport drinks (e.g., Gatorade and Powerade) comprise one third to one-half of fluid needs, with the balance supplied by water.



### Fatigue

- Adhere to the work/rest ratio guidelines
- Mitigate before next shift
- Rotate resources out of smokey areas when possible
- Monitor personnel for signs of fatigue

Red Team Safety Officers: Tony Rivers (T), Mike Cook, Larry Connell, Brad Lidell

## INCIDENT SAFETY ANALYSIS 215a

Meyers-Sapphire Complex - Monday, September 11, 2017

8. Location	9. Hazard	6. Control or Abatement Action (Engineering, Administrative, PPE, Avoidance, Education, etc)
Contingency, IA	Power Utilities	<ul style="list-style-type: none"> <li>~ Notify all personnel of down electrical lines.</li> <li>~ Refer to the IRPG page 24 for Power Line Safety.</li> <li>~ Always treat downed wires as energized.</li> <li>~ Identify and avoid high tension transmission lines.</li> <li>~ In high winds or areas of dense smoke, avoid areas under power lines.</li> <li>~ Be aware of utility restoration in your work area.</li> </ul>
ALL	Air Operations	<ul style="list-style-type: none"> <li>~ Follow "Aviation Watch-Out Situations" on page 44, IRPG.</li> <li>~ Don't plan on air resources for medical transport or resupply.</li> <li>~ Ensure positive communication with all air resources.</li> <li>~ Ensure communications are established with operators.</li> <li>~ During airtanker operations clear the drop zone before approach of the lead plane.</li> </ul>
R,T,W,N,O	Structure Protection & HAZMAT	<ul style="list-style-type: none"> <li>~ Review "Wildland Urban Interface" Watch outs, IRPG page 12.</li> <li>~ Use "Structure Assessment" checklist, IRPG pages 13-15.</li> <li>~ Follow "HAZMAT Incident Operations" on pages 34-36 in IRPG.</li> <li>~ Identify and avoid damaged gas service near structures.</li> </ul>
ALL	Extreme Fire Behavior	<ul style="list-style-type: none"> <li>~ Share weather observations with all personnel assigned to division.</li> <li>~ Establish LCES</li> <li>~ Establish "Trigger Points" to withdraw.</li> <li>~ Use "Risk Management" process prior to engaging in suppression actions, refer to page 1, IRPG.</li> </ul>
ALL	Fireline Hazards	<ul style="list-style-type: none"> <li>~ Establish and continue to validate LCES.</li> <li>~ Avoid radiant heat by wearing appropriate PPE correctly.</li> <li>~ Use correct tool for task assigned.</li> <li>~ Follow power line safety protocol as outlined on page 22 in IRPG.</li> <li>~ Flag and isolate all HAZMAT and alert all personnel working in Division.</li> <li>~ Follow WUI recommendations on pages 10-11 in IRPG.</li> </ul>
ALL	Helicopter Operations	<ul style="list-style-type: none"> <li>~ Helicopter operations should be used for priority missions.</li> <li>~ Stay clear of all bucket drops when suppression actions are in place and allow 1 minute prior to re-entry.</li> <li>~ Pilots or air supervisor ensure ground resources are clear before bucket drops.</li> <li>~ Monitor A-G communications.</li> <li>~ Follow aviation safety guidelines in IRPG and IHOG.</li> <li>~ Ground resources advise pilot of local power lines and local visibility issues.</li> </ul>
ALL	Hazard Trees	<ul style="list-style-type: none"> <li>~ Follow "Hazard Tree Safety" guidelines, IRPG page 22.</li> <li>~ Post lookouts, or use a spotter in mop-up areas with personnel.</li> <li>~ Don't park vehicles or take breaks in high concentrations of hazard trees.</li> <li>~ Establish trigger points for disengagement during high wind events.</li> <li>~ Remember that the hazard zone extends a minimum of 2 1/2 tree heights.</li> </ul>
A,E,K,I	Chain Saw Operations	<ul style="list-style-type: none"> <li>~ Follow "Hazard Tree Safety" guidelines, IRPG page 22</li> <li>~ Look up, Look down, Look around for hazard tree indicators.</li> <li>~ Only fell and buck trees within your expertise, and training.</li> <li>~ Follow "Procedural Felling Operations" on page 79 in IRPG.</li> <li>~ Do not fall trees during high wind events.</li> <li>~ Ensure proper use of all required PPE.</li> </ul>
Initial Attack	Downhill Line Construction	<ul style="list-style-type: none"> <li>~ Minimize downhill line locations.</li> <li>~ Post lookouts (IRPG pg. 7)</li> <li>~ Follow downhill line construction guidelines (IRPG pg. 9)</li> </ul>

## INCIDENT SAFETY ANALYSIS 215a

ALL	Steep Terrain & Rolling Debris	<ul style="list-style-type: none"> <li>~ Plan for medical emergencies and extreme fire behavior / escape routes over steep terrain and limited access.</li> <li>~ Maintain 8'-10' spacing when working &amp; walking.</li> <li>~ Don't work above or below any personnel or heavy equipment.</li> <li>~ Be on the lookout for rolling rocks, debris, or burning material.</li> <li>~ Evaluate necessity to send personnel in areas with limited access.</li> <li>~ Post lookouts (IRPG pg 7), identify safety zones and suitable escape routes, provide good communications.</li> </ul>
ALL	Injury & Medical Emergency	<ul style="list-style-type: none"> <li>~ Assist injured employee and provide appropriate medical care.</li> <li>~ Use EMT's on Division for initial care.</li> <li>~ Follow medical protocol as outlined in ICS-206 &amp; IRPG Pgs 99-108</li> </ul>
A,R	Firing Operations & Devices	<ul style="list-style-type: none"> <li>~ Only personnel trained in the use of each device will be authorized to use firing equipment.</li> <li>~ Ensure all personnel are aware of firing operation that may affect them.</li> <li>~ Wear appropriate PPE.</li> <li>~ Ensure aerial/ground ignition plans have been adequately developed and personnel are briefed.</li> </ul>
ALL	Communications	<ul style="list-style-type: none"> <li>~ Maintain communication with aviation resources, and suppression organization.</li> <li>~ Ensure all know frequency and protocol for contacting resources.</li> <li>~ Use clear terminology, ask questions and ensure good understanding, especially with new resources.</li> <li>~ Utilize the ICS 205.</li> <li>~ Utilize human repeaters when working in dead spots.</li> <li>~ Know who you will contact in case of an emergency and practice the IWI protocol and 9 Line</li> </ul>
ALL	Heavy Equipment Operations	<ul style="list-style-type: none"> <li>~ Ensure communications are established with operators.</li> <li>~ Use hand signals if other communications are unavailable.</li> <li>~ Maintain a 50'-100' exclusion area around equipment and increase it to 1 1/2 times tree height when in timber.</li> <li>~ Use a spotter when backing.</li> </ul>
ALL	Night Operations	<ul style="list-style-type: none"> <li>~ Maintain high visibility in work area and wear vest while in roadway.</li> <li>~ Use glow sticks to mark hazards.</li> <li>~ Ensure personnel have a personal light (headlamp) and red strobe to ensure visibility.</li> <li>~ Watch for signs of fatigue.</li> <li>~ Take breaks away from areas of known hazard.</li> </ul>
ALL	Bears and Wolves	<ul style="list-style-type: none"> <li>~No food in tents. Pick up trash in ICP and on the line. Don't travel alone when possible. Make noise when traveling through remote areas alone.</li> </ul>
ALL	Personal Hygiene	<ul style="list-style-type: none"> <li>~ Don't share personal items such as water bottles communication devices and utensils.</li> <li>~ Wash hands before meals, and after use of rest room facilities.</li> <li>~Clean &amp; disinfect commonly used surfaces (cell phones, steering wheels, ect. ).</li> <li>~Cough &amp; sneeze into your sleeve</li> </ul>
ALL	Smoke Exposure	<ul style="list-style-type: none"> <li>~Use warning lights and provide traffic control on roads as necessary. Rotate crews in and out of smoky areas to limit exposure when possible.</li> </ul>



## INCIDENT SAFETY ANALYSIS 215a

ALL & ICPs	Driving & Traffic	<ul style="list-style-type: none"> <li>~ Practice "Defensive Driving" techniques traveling on all roads and city streets.</li> <li>~ Use spotters when backing.</li> <li>~ Honk horn to alert personnel when backing.</li> <li>~ Keep clutter off dash and inside cab.</li> <li>~ Follow Driving LCES (Lights, Chock blocks, Emergency brake, Seat belts.</li> <li>~ Always use headlights.</li> <li>~ Yield to pedestrians and bicycles.</li> <li>~ Observe posted speed limits.</li> <li>~ Use the 3 second rule for following distance when driving.</li> <li>~ Use chock blocks, turn wheels into hill.</li> <li>~ Avoid distractions (eating, cell phones, radio).</li> <li>~ Ensure that windshields are kept clean of dust and bugs.</li> <li>~Use caution when traveling on roads that are impacted by smoke or dusty conditions.</li> <li>~When feasible, coordinate travel to and from the hotels to ensure two or more personnel travel together to mitigate long distances.</li> </ul>
DIVS I	Chipping	<ul style="list-style-type: none"> <li>~Make sure all personnel operating the equipment are qualified.</li> <li>~Do not wear clothing which may become entangled with material being fed into chipper.</li> <li>~Never reach into the infeed shroud.</li> <li>~Do not use your hands or feet to push material into feeder.</li> <li>~Wear the proper PPE when operating the chipper at all time.</li> </ul>
ALL	Fatigue & Over Exertion	<ul style="list-style-type: none"> <li>~ Drink 1 quart of water each hour during and after work.</li> <li>~ Rotate crews out of smoky areas.</li> <li>~ Set a reasonable work pace and allow adequate rest breaks while on the project.</li> <li>~ Use buddy system to monitor personnel of heat related and fatigue issues.</li> <li>~ Follow work / rest guidelines. Mitigate before next shift.</li> </ul>
ALL	Fatigue & Over Exertion	<ul style="list-style-type: none"> <li>~Ensure adequate rest (7-8 hrs of sound sleep). Stay Hydrated. Eat well balanced diet.</li> <li>Pay attention to minor body aches. Wash hands frequently. Monitor yourself and others for fatigue.</li> </ul>
A,E,R,T,W	Mine Shafts	<ul style="list-style-type: none"> <li>~Avoid stepping on any man made rock or brush piles. Flag when located. Do not enter any mine shafts.</li> </ul>

# MEDICAL PLAN (ICS 206 WF)

<b>1. Incident/Project Name</b>		<b>2. Operational Period</b>						
Meyers Saphire Complex		Date/Time 9/11/2017 operational period						
<b>3. Ambulance Services</b>								
Name	Availability	Contact	Advanced Life Support (ALS) Yes      No					
A-1 Ambulance Branch 1	Incident dedicated	Command channel	X					
Three Rivers Ambulance Branch 2	Incident dedicated	Command channel	X					
Granite, Ravalli and Deer Lodge County		911	X					
<b>4. Air Ambulance Services</b>								
Name	Phone	Type of Aircraft & Capability						
Air Idaho Rescue (West Yellowstone)	1-208-529-6340	Night Vision, ALS flight service, Tan. Ch 12						
Life Flight (Missoula and Butte)	911	Night vision, ALS transport, Frequency Tan. Ch 12						
Two Bear Air	911	Night vision, FLIR, hoist, can transport to ground unit or private aeromed unit. Frequency Tan. Ch 12						
<b>5. Hospitals</b>								
Name Complete Address	GPS Datum – WGS 84 Coordinate Standard Degrees Decimal Minutes DD° MM.MMM' N - Lat DD° MM.MMM' W - Long		Travel Time (from ICP)		Phone	Helipad Yes No		Level of Care Facility
	Lat:	Long:	Air	Ground		Yes	No	
St. Patrick's Hospital 500 W Broadway Missoula, MT	N 46° 52.551'	W 113° 59.986'	30 min	120 min	406-329-5635, Emergency Rm	Yes		Level 2 Trauma
Community Hospital of Anaconda 401 W Pennsylvania Anaconda, MT	N 46° 07.969'	W 112° 57.456'	15 mins	45 mins	406-563-8585 ER Emergency Rm	Yes	roof & ground	Level 4 community trauma hospital
Granite County Medical Center 310 Sansome ST Philipsburg, Mt	N 46° 19.811'	W 113° 17.653'	15 min	30 min	406-859-3271	Yes		community hospital, no trauma designation
Marcus Daly Hospital 1200 Westwood dr Hamilton MT	N 46° 14.898'	W 114° 10.32'		To India Spike 1.0 hrs	406-363-2211	Yes		Level 4 trauma
<b>Special Notes</b>								
The Medical unit will be open from 0530 – 2200. After hours, security can contact the incident ambulance and the MEDL in case of an emergency in camp or on the line.								
<b>6. Division/Branch</b>		<b>Area Location Capability</b>						
<b>Division A/E  Branch 3</b>		<b>EMS Responders &amp; Capability:</b>		<b>Bobbie Bink, AEMT(IA)    A-1 Ambulance (ALS,BLS)</b>				
		<b>Equipment Available on Scene:</b>		spine board, kit, oxygen				
		<b>Medical Emergency Channel:</b>		Command Channel				
		<b>ETA for Ambulance to Scene:</b>		5-10 min. *Stationed at Copper Creek CG*				
		<b>Air/Ground:</b>		A/G Primary 169.2000				
		<b>Approved Helispots:</b>		<b>H8</b> , near DP 19				
		<b>Lat:</b>		N 45 59.963'				
		<b>Long:</b>		W113 31.708'				

## MEDICAL PLAN (ICS 206 WF)


<b>Branch 3</b> <b>Division R/T/W</b>	EMS Responders & Capability:	<b>Chris Orr, EMTF</b>		
	Equipment Available on Scene:	BLS Kit, SKED, AED, BLS		
	Medical Emergency Channel:	Tac on ground/Command Channel		
	ETA for Ambulance to Scene:	45 minutes		
	Air/Ground:	A/G Primary 169.2000		
	Approved Helispots:	<b>H-18</b> , near DP28		
	Lat:	N 46° 08.610'		
	Long:	W 113° 36.45'		
<b>Branch 3</b> <b>Division I (India)</b>	EMS Responders & Capability:	<b>Chris Noon, EMTF    Olena Gartner, EMTF</b>		
	Equipment Available on Scene:	BLS Kit, Spine Board, Oxygen		
	ETA for Ambulance to Scene:	1.0 hours		
	Air/Ground:	A/G primary		
	Approved Helispots:	<b>H-31</b>		
	Lat:	N 45° 54.340'		
	Long:	W113° 45.114'		
	Medical Emergency Channel:	Command,		
<b>Branch 3</b> <b>Division K</b>	EMS Responders & Capability:	<b>Melanie Miller, EMPF</b>		
	Equipment Available on Scene:	ALS/BLS Kit, Sked, AED, O2		
	ETA for Ambulance to Scene:	45 min		
	Approved Helispot:	<b>H- 10</b>		
	Lat:	N46° 01.531'		
	Long:	W113° 39.998'		
	Medical Emergency Channel:	Command		
<b>Branch 1</b> <b>Division G (GOAT)</b>	Point of Contact:	Greg Titus		
	EMS Responders & Capability:	<b>Terry Williamson, AEMF</b>		
	Equipment Available on Scene:	BLS, Trauma kit, O2, SKED		
	ETA for Ambulance to scene:	1 hr from Missoula		
	Air from Helibase:	15 min		
	Approved Helispot:	<b>H-4</b>		
	Lat:	N 46° 40.553		
	Long:	W 113° 35.817		
Medical Emergency Channel:	Command			
<b>Branch 2</b> <b>Division N</b>	Point of Contact:	Alison Coons		
	EMS Responders & Capability:	<b>Johanna Hyde, EMTF</b>		
	Equipment Available on Scene:	ALS meds, BLS, Trauma kit, O2, SKED, AED, KED		
	ETA for Ambulance to Scene:	1hr from DP-49 (Three Rivers Ambulance)		
	Air from Helibase:	15 min		
	Approved Helispot:	<b>H-14</b>	<b>H-15</b>	<b>H-16</b> <b>Miner Mud</b>
	Lat:	N46 31.110	N46 29.219	N46 26.120    N46 24.102
	Long:	W113 30.650	W113 30.981	W113 30.920    W113 30.278
Medical Emergency Channel:	Command			
<b>Branch 2</b> <b>Division O</b>	Point of Contact:	Alison Coons		
	EMS Responders & Capability:	<b>Johanna Hyde, EMTF</b>		
	Equipment Available on Scene:	BLS, O2, Trauma kit, SKED		
	ETA for Ambulance to Scene:	30 min from DP-49 (Three Rivers Ambulance)		
	Air from Helibase:	15 min		
	Approved Helispot:	<b>H-17</b>	<b>H-18</b>	
	Lat:	N 46° 22.498	N 46° 21.505	
	Long:	W 113° 31.770	W 113° 32.533	
Medical Emergency Channel:	Command			

# MEDICAL PLAN (ICS 206 WF)

<b>Branch 2 Division P</b>	Point of Contact:	Alison Coon	
	EMS Responders and Capability:	Three Rivers Ambulance (ALS, Paramedic)	
	Equipment Available on Scene:	BLS, ALS, Trauma gear, O2, AED	
	ETA for Ambulance:	30 min from DP-49 (Three Rivers)	
	Air from Helibase:	15min	
	Approved Helispot:	H-18	H-19
	Lat:	N 46° 21.505	N 46° 21.547
	Long:	W 113° 32.533	W 113° 33.252
	Medical Emergency Channel:	Command	
<b>Branch 2 Division Z</b>	Point of Contact:	Alison Coons	
	EMS Responders & Capability:	Rex Nielsen, EMPF	
	Equipment Available on scene:	ALS kit w/Meds, O2, SKED, AED	
	ETA for Ambulance:	30 min from ICP to DP-49 (Three Rivers)	
	Air from Helibase:	15 min	
	Approved Helispot:	H-21	
	Lat:	N 46° 24.623	
	Long:	W 113° 42.064	
	Medical Emergency Channel:	Command	
<b>ICP</b>	EMS responders and capability	Dale Guynes, EMTB (BLS)	
	Equipment Available on Scene:	AED, medical unit supplies	
	Medical Emergency Channel:	Command Channel	
	ETA for Ambulance to Scene:	45 min	
	Approved Helispot:	Meyers Helibase	
	Lat:	N 46° 11.051'	
	Long:	W 113° 29.571' elevation 6000'	

### IWI IC Responsibilities:

- Take charge of the scene – inform the Division Supervisor and Communications that you are the IWI IC and establish radio communications (frequencies, channels). Identify the emergency name.  
– e.g. (Division A medical, Fish Meadows medical, Highway 21 accident.)
- Assign or begin patient assessment (9 Line) and first aid. Request additional medical resources on division/branch or across incident. Transmit 9 Line patient information to Communications.
- Determine patient transportation through consultation with line medical personnel and Medical Unit Leader. Consider transportation time, risk to personnel, destination facility and available operational resources. If air transport is chosen, implement the plan for alternative transportation in the event aircraft cannot complete the mission. Order transportation resources through Communications as early as possible.
- Notify Communications as resources arrive and any patient status changes. Names of injured or deceased individuals will not be transmitted on the radio.
- Initiate documentation for future investigation; if a line safety officer is available, assign them to lead documentation. Do not move deceased individuals, gear or personal effects except to accomplish rescue work or protect the safety of others. Obtain written documentation of witnesses. The Unit Log, ICS 214, may be used for the initial documentation, but a subsequent narrative will be required.
- As appropriate, conduct an After Action Review to determine successes, areas to improve and lessons learned.

Prepared by (Medical Unit Leader)	Date/Time	1. Reviewed By (Safety Officer)	Date/Time
Fred Adler 479-238-6064	9/10/2017,	Tony Rivers SOF1 	9/10/17



# Human Resource Message

It's been a long and difficult fire season. We're all tired – both mentally and physically. Fatigue not only has dire consequences for our physical safety while on fire assignment but it also has a negative effect on our social interactions. The negative effects that fatigue and sleep deprivation can have on social interactions have been documented by research and include:

- Decreased communication.
- Increased difficulty maintaining focus on relevant cues and difficulty developing and updating strategies.
- Increased outbursts of inappropriate mood-related behavior that include irritability, impatience, childish humor, lack of regard for normal social conventions, inappropriate interpersonal behaviors and unwillingness to engage in forward planning.
- Greater risk-taking behavior.



Getting enough rest is critical to promoting and maintaining an environment of mutual respect and effective teamwork. If you feel tired and irritable throughout the day, be sure to make a mental note of it and pay special attention to how your fatigue may be affecting your communications and interactions with your team.

*Remember*

**You are the most important resource on this incident.**

Human Resources Specialists:

- Linda Buck; 208-582-0401
- Kris Cahoon (t); 503-307-8820

## TENTATIVE DEMOB

### MEYERS

9/11

O-446	RADO	Amber Blair
O-592.46	COST	Carolyn Detwiler
O-592.52	TNSP	Greg Seamon

9/12

O-416	TFLD	John Ashcraft
O-481	HECM	Rocco Schroeder
O-449.50	COST	Karilynn Putt
O-592.5	SOF1	Mike Cook
O-495	SITL	Kevin Parrish
E-101	PU	Patterson Enterprise

### SAPPHIRE

9/11

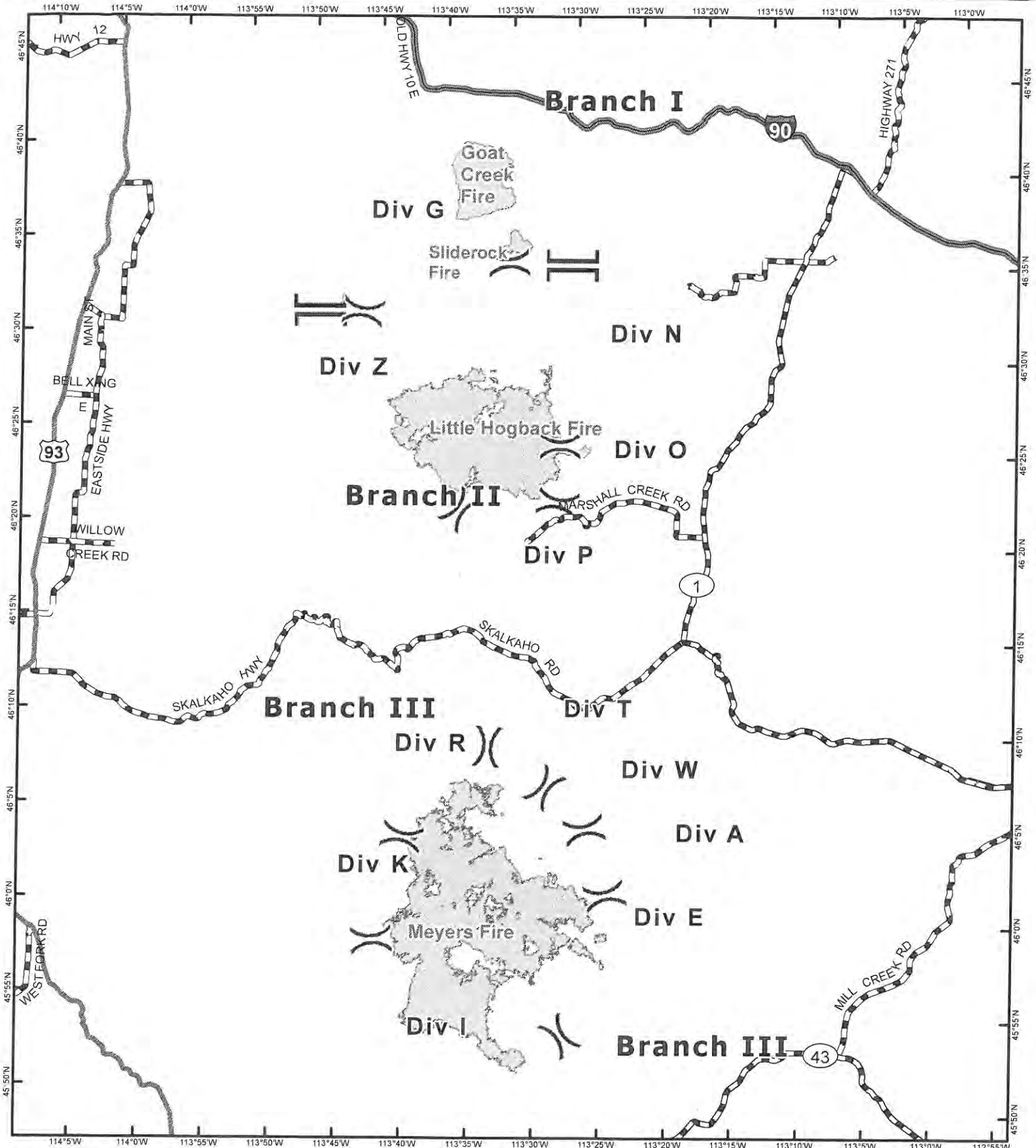
O-409	GISS	Fay Dearing
E-209	ENG3	Custer Engine 2

9/12

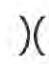


O-439	PTRC	Sandra Kase
O-469	SECG	Alfred Still Smoking

9/13

O-382	RADO	Noah Schulz
-------	------	-------------



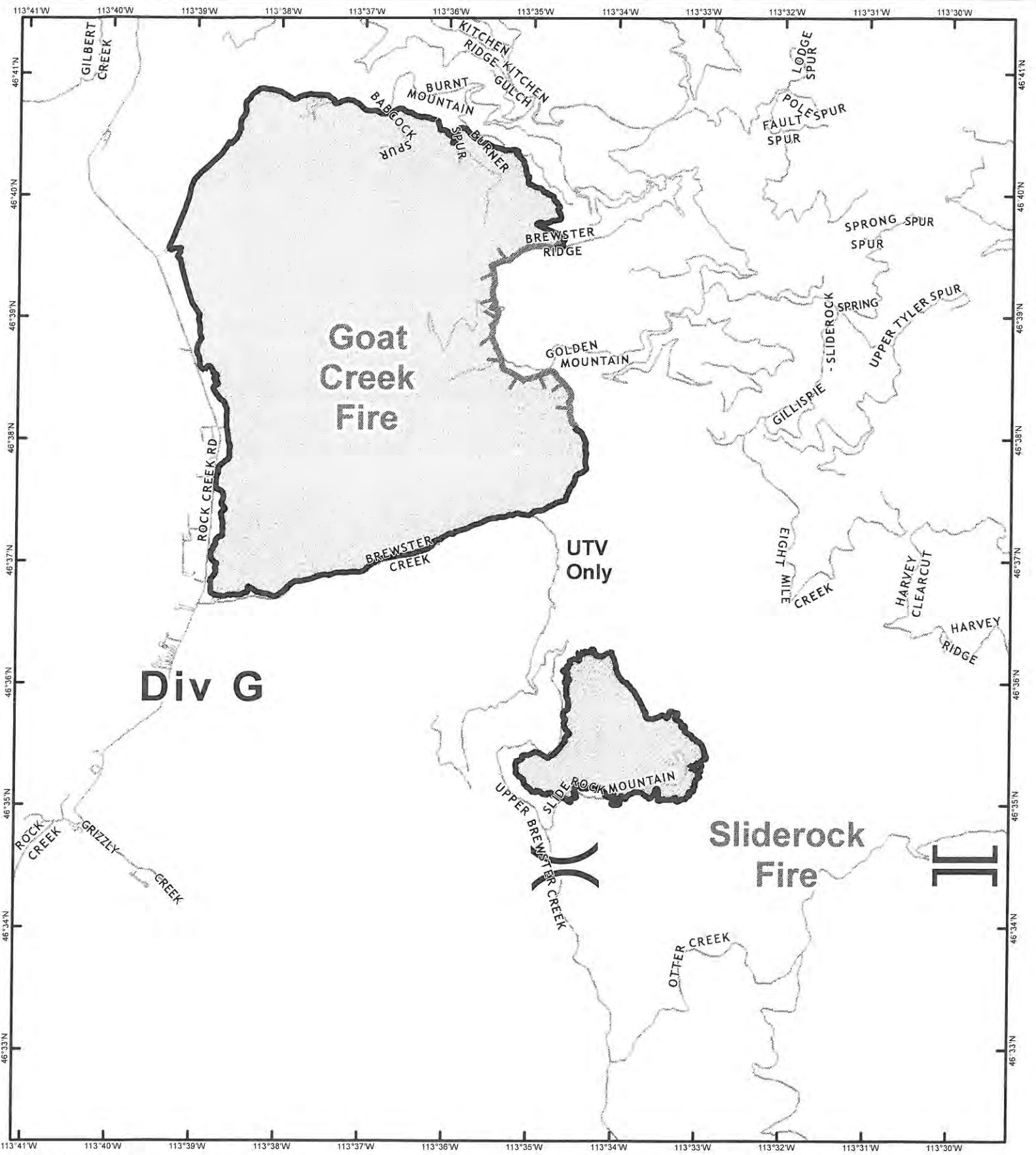
**Myers Sapphire Complex**  
 MT-BDF-002217  
 9/11/2017  
 IAP Map - Overview

-  Division Break
-  Branch Break
-  Fire Perimeter

Goat Creek: 8,300 acres  
 Sliderock: 900 acres  
 Little Hogback: 34,439 acres  
 Meyers: 60,291 acres  
 Total: 103,930 acres

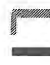

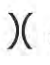
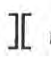
Perimeter from  
 Septmeber 10, 2017 @ 1603





Meyers Sapphire Complex  
 MT-LNF-001463  
 9/11/2017

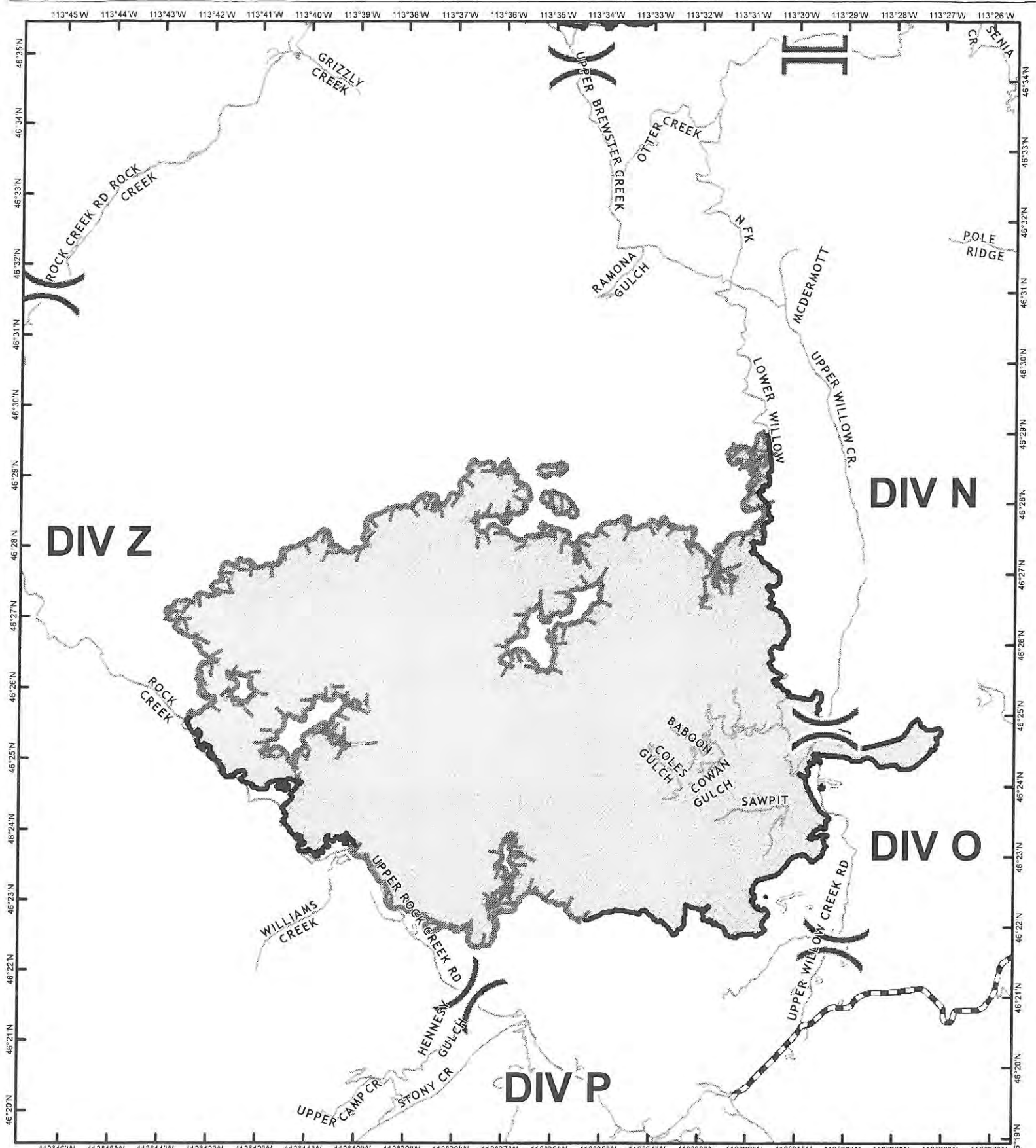
Branch I - Goat Creek and Slide Rock Fires  
 Perimeter from 9/10/2017 @ 1603  
 Goat Creek: 8,300 acres  
 Sliderock: 900 acres

-  Uncontrolled Fire Edge
-  Completed Line
-  Division Break
-  Branch Break





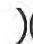

0 1 2 Miles



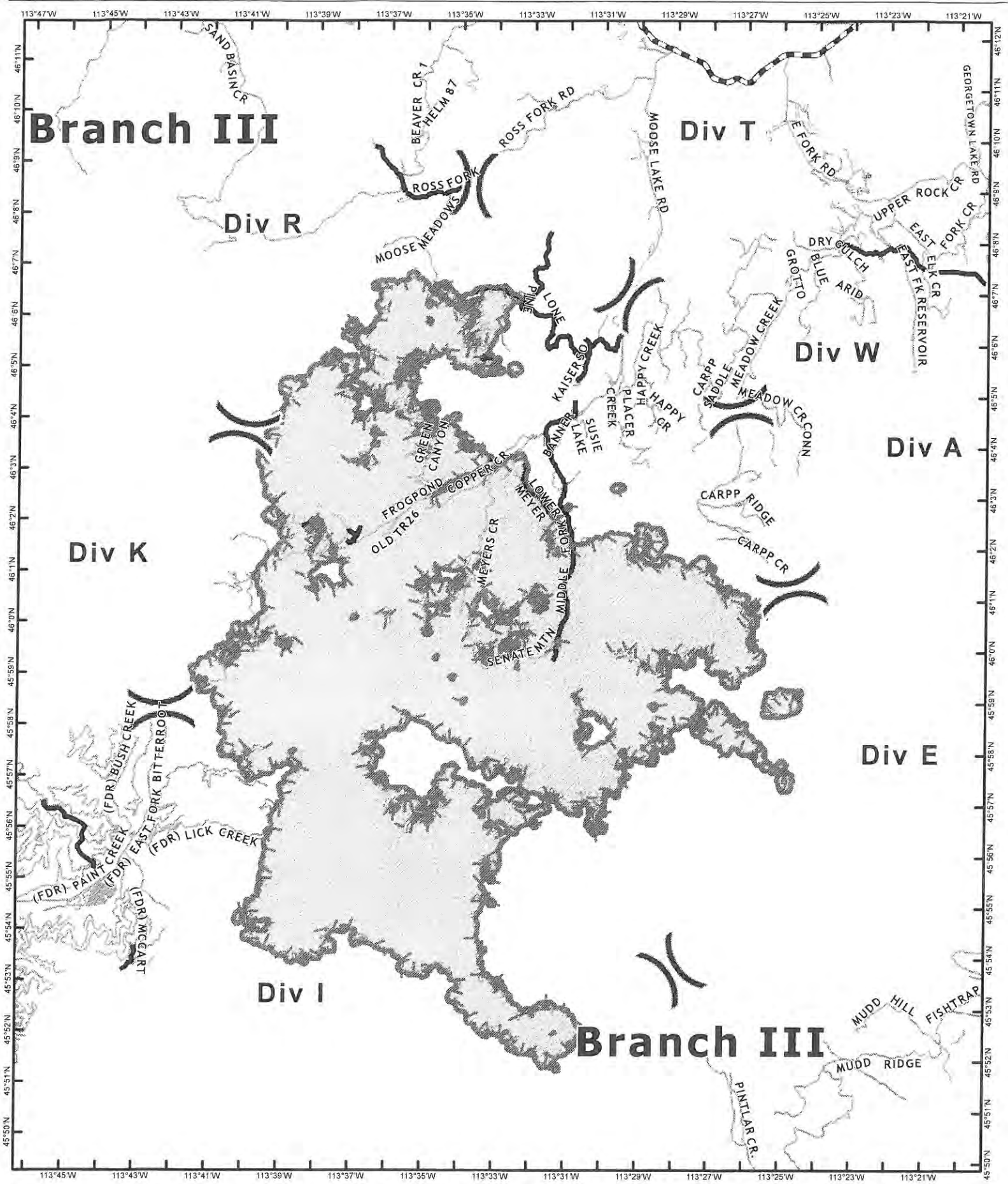


**Meyers Sapphire Complex**  
**MT-LNF-001463**  
**9/11/2017**  
 Branch II  
 Little Hogback Fire

Perimeter from 9/10/2017 @ 1603  
 34,439 acres

-  Completed Line
-  Uncontrolled Fire Edge
-  Division Break
-  Branch Break





**Branch III**

**Div T**

**Div R**

**Div W**

**Div A**

**Div K**




**Div E**

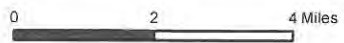
**Div I**

**Branch III**

Meyers Sapphire  
Complex  
MT-BDF-002217

Branch III  
Meyers Fire  
60,291 acres

-  Division Break
-  Uncontrolled Fire Edge
-  Completed Line



9/11/2017

Perimeter from 9/10/2017 @ 1603





# MEDICAL PLAN (ICS 206 WF)

Medical Incident Report					
FOR ALL MEDICAL EMERGENCIES: IDENTIFY ON SCENE INCIDENT COMMANDER BY NAME AND POSITION AND ANNOUNCE "MEDICAL EMERGENCY" TO INITIATE RESPONSE FROM IMT COMMUNICATIONS/DISPATCH.					
<b>Use items one through nine to communicate situation to communications/dispatch.</b>					
<b>1. CONTACT COMMUNICATIONS/DISPATCH</b> <i>Ex: "Communications, Div. Alpha. Stand-by for Priority Medical Incident Report." (If life threatening request designated frequency be cleared for emergency traffic.)</i>					
<b>2. INCIDENT STATUS:</b> <i>Provide incident summary and command structure.</i>					
<b>Nature of Injury/Illness</b>			<i>Describe the injury (Ex: Broken leg with bleeding)</i>		
Incident Name			<i>Geographic Name + "Medical" (Ex: Trout Meadow Medical)</i>		
Point of Contact			<i>Name of Point of Contact</i>		
Patient Care			<i>Name of Care Provider (Ex: EMT Smith)</i>		
<b>3. INITIAL PATIENT ASSESSMENT:</b> <i>Complete this section for each patient. This is only a brief, initial assessment. Provide additional patient info after completing this 9 Line Report.</i>					
Number of Patients:	Male / Female	Age:	Weight:		
Conscious? <input type="checkbox"/> YES <input type="checkbox"/> NO = MEDEVAC!					
Breathing? <input type="checkbox"/> YES <input type="checkbox"/> NO = MEDEVAC!					
Mechanism of Injury: <i>What caused the injury?</i>					
Lat/Long (Datum WGS84) <i>Ex: N 40° 42.45' x W 123° 03.24'</i>					
<b>4. SEVERITY OF EMERGENCY, TRANSPORT PRIORITY</b>					
SEVERITY			TRANSPORT PRIORITY		
<input type="checkbox"/> <b>URGENT-RED</b> Life threatening injury or illness. <i>Ex: Unconscious, difficulty breathing, bleeding severely, 2° – 3° burns more than 4 palm sizes, heat stroke, disoriented.</i>			Ambulance or MEDEVAC helicopter. Evacuation need is <b>IMMEDIATE.</b>		
<input type="checkbox"/> <b>PRIORITY-YELLOW</b> Serious Injury or illness. <i>Ex: Significant trauma, not able to walk, 2° – 3° burns not more than 1-2 palm sizes.</i>			Ambulance or consider air transport if at remote location. Evacuation may be <b>DELAYED.</b>		
<input type="checkbox"/> <b>ROUTINE-GREEN</b> Not a life threatening injury or illness. <i>Ex: Sprains, strains, minor heat-related illness.</i>			Non-Emergency. Evacuation considered <b>Routine of Convenience.</b>		
<b>5. TRANSPORT PLAN:</b>					
<b>Air Transport:</b> (Agency Aircraft Preferred)					
<input type="checkbox"/> Helispot		<input type="checkbox"/> Short-haul/Hoist		<input type="checkbox"/> Life Flight	
				<input type="checkbox"/> Other	
<b>Ground Transport:</b>					
<input type="checkbox"/> Self-Extract		<input type="checkbox"/> Carry-Out		<input type="checkbox"/> Ambulance	
				<input type="checkbox"/> Other	
<b>6. ADDITIONAL RESOURCE/EQUIPMENT NEEDS:</b>					
<input type="checkbox"/> Paramedic/EMT(s)		<input type="checkbox"/> Crew(s)		<input type="checkbox"/> SKED/Backboard/C-Collar	
<input type="checkbox"/> Burn Sheet(s)		<input type="checkbox"/> Oxygen		<input type="checkbox"/> Trauma Bag	
<input type="checkbox"/> Medication(s)		<input type="checkbox"/> IV/Fluid(s)		<input type="checkbox"/> Cardiac Monitor/AED	
<input type="checkbox"/> Other (i.e. splints, rope rescue, wheeled litter)					
<b>7. COMMUNICATIONS:</b>					
Function	Channel Name/Number	Receive (Rx)	Tone/NAC *	Transmit (Tx)	Tone/NAC *
COMMAND					
AIR-TO-GRND					
TACTICAL					
*(NAC for digital radio system)					
<b>8. EVACUATION LOCATION:</b>					
Lat/Long (Datum WGS84) <i>EX: N 40 42.45' x W 123 03.24'</i>					
Patient's ETA to Evacuation Location:					
Helispot/Extraction Size and Hazards:					
<b>9. CONTINGENCY:</b>					
<i>Considerations: If primary options fail, what actions can be implemented in conjunction with primary evacuation method? Be thinking ahead...</i>			<b>REMEMBER:</b> Confirm ETA's of resources ordered Act according to your level of training Be Alert. Keep Calm. Think Clearly. Act Decisively.		

