

Meyers Sapphire Complex

Incident Action Plan *Day*

Operational Period
September 12, 2017
0700 – 2000



QR for IAP



Meyers

MT-BDF-002217

USFS P1K7C417 (0102)

FWS FFF2000000K7C40

Sapphire Complex

MT-LNF-001463

USFS: P1K7XL17 (0116)

IDL: FED11417

FWS FFF2000000K7XL0

DNRC: 767012 DOI: K7XL

QR for Maps



Schedule


0700 Morning Briefing
0730 Radio Briefing –
1130 C&G
1800 Planning Meeting
1800 Night Briefing
1900 Plans Parts DUE




INCIDENT OBJECTIVES (ICS 202)

1. Incident Name:		2. Operational Period: 0700 - 2000	
MEYERS SAPPHIRE COMPLEX		Date/Time From: 09/12/2017 0700 TUE	Date/Time To: 09/12/2017 2000 TUE
3. Objective(s):			
<p>1) Provide for life first of firefighters and public safety by following sound risk management protocols. Firefighter, public, and aviation safety is our priority in all fire management activities.</p> <p>2) Execute full suppression fire management strategies using direct, indirect, and/or zone protection tactics to guide fires in to man-made or natural barriers, while minimizing firefighter exposure and impacts to critical values at risk.</p> <p>Prioritize values at risk as follows: Private lands, infrastructure, grazing allotments, and natural, cultural, and heritage resources.</p> <p>Specific Values at Risk:</p> <ul style="list-style-type: none"> • Ravalli County: Martin Creek Campground, Billy Springer Memorial subdivision and Bonanza communities in the East Fork of the Bitterroot, and the proposed Meadow Vapor Timber Sale. • Granite County: Moose Lake, Frog Pond Basin, Senate Mountain, Ross Fork Area, East Fork Reservoir, and Georgetown Lake, Little Hogback, Upper Willow, and Lower Willow. • Deerlodge County: Fish Lake Area, and Pintler Face timber sale. <p>3) Provide initial attack support on the Lolo National Forest and initial attack response on Montana DNRC and Beaverhead-Deerlodge National Forest Protection within the Temporary Flight Restrictions (TFR)</p> <p>4) Coordinate suppression repair action with the assigned Resource Advisor prior to implementation.</p>			
4. Operational Period Command Emphasis:			
<p>5) Ensure timely and accurate dissemination and coordination of information regarding fire related activities is provided to the public, cooperators, elected official, and stakeholders.</p> <p>6) Contain costs by using the most cost effective method that does not jeopardize the safety of firefighters and the public.</p> <p>7) Enforce adequate standards to ensure that loss of accountable property and equipment is 6% or less.</p> <p>8) Manage the human resources assigned to the fire in a manner that promotes a positive and harassment free work environment and creates a "no tolerance" atmosphere for harassment, alcohol, or illegal drug use.</p>			
General Situational Awareness:			
See attached safety message			
5. Site Safety Plan Required? Yes <input type="checkbox"/> No <input checked="" type="checkbox"/>			
Approved Site Safety Plan(s) Located at:			
6. Incident Action Plan (the items checked below are included in this Incident Action Plan):			
<input checked="" type="checkbox"/> ICS 202	<input type="checkbox"/> ICS 207	Other Attachments: <input type="checkbox"/> _____ <input type="checkbox"/> _____ <input type="checkbox"/> _____ <input type="checkbox"/> _____	
<input checked="" type="checkbox"/> ICS 203	<input type="checkbox"/> ICS 208		
<input checked="" type="checkbox"/> ICS 204	<input checked="" type="checkbox"/> ICS 220		
<input checked="" type="checkbox"/> ICS 205	<input checked="" type="checkbox"/> Map/Chart		
<input checked="" type="checkbox"/> ICS 205A	<input checked="" type="checkbox"/> Weather Forecast/Tides/Currents		
<input checked="" type="checkbox"/> ICS 206			
7. Prepared by: TERRY PIERCE	Position/Title: PSC1	Signature: <i>Terry Pierce</i>	
8. Approved by Incident Commander:		Name: MIKE DUEITT	Signature: <i>Mike Dueitt</i>
ICS 202	IAP Page	Date/Time: 09/11/2017 2100	

ORGANIZATION ASSIGNMENT LIST (ICS 203)

1. Incident Name:		2. Operational Period: 0700 - 2000	
MEYERS SAPPHIRE COMPLEX		Date/Time From: 09/12/2017 0700	Date/Time To: 09/12/2017 2000 TUE
3. Incident Commander(s) and Command Staff:		6. Logistics Section:	
IC/UC	MIKE DUEITT MARK MORALES	CHIEF	JOHNNY SMITH, RICK BARRETT (T)
SAFETY OFFICER	MICHAEL COOK, LARRY CONNELL BRAD LIDELL, TONY RIVERS (T)	SERVICE BRANCH DIRECTOR	JOE WALKER
INFORMATION OFFICER	CATHERINE HIBBARD, JOE MAZZEO, JENI GARCIN (T)	SUPPLY UNIT	MARK MORGAN
LIAISON OFFICER	PAUL STEVENS MIKE WRIGHT	FACILITIES UNIT	SUSANNE ADAMS, DAVID MOODY (T)
		GROUND SUPPORT UNIT	THOMAS "BO" SULLIVAN CHARLES REESE
		COMMUNICATIONS UNIT	RON REGAN
		MEDICAL UNIT	FRED ADLER
4. Agency/Organization Representative(s):		ORDERING MANAGER	MAGGIE BELMORE, NINA GAINEY
Agency/Organization	Name		
B-D NF	MELANY GLOSSA		
B-D NF	ERIC TOMASIK		
BNF	JULIE KING		
BNF	ERIC WINTHERS		
USFS - LOLO NF	JEN HENSICK CHRIS FURR		
DNRC	BRIAN ROBBINS		
BLM	JOE ASHOR, STEVE HANCOCK		
USFS - B-D NF	CAMERON RASOR		
5. Planning Section:		7. Operations Section:	
CHIEF	TERRY PIERCE	OPS SECTION CHIEF	PETER MYERS, DAVID WALKER
RESOURCES UNIT	DONNA THOMAS, RICH R AUBUCHON BARRY FARRELL	PLANNING OPS	JAMIE SCHWARTZ, JEREMY BRAND (T)
DEMOBILIZATION UNIT	MARG OLSON	Branch I	
SITUATION UNIT	JASON BRAUNSTEIN, MISSY FORDER (T)	BRANCH DIRECTOR	JEFF SCHARDT
ITSS	JOE ASHBY, TONY FARMER	DIVISION/GROUP	G JON MCLAUGHLIN JOHN FRY (T)
GIS SPECIALIST	ANDREW THOMPSON, DAVID JONES MATT DISKINS, CHRISTIN VOSE (T)		
FIRE BEHAVIOR ANALYST	BRUCE DAVENPORT BRENDA DALE (T)	Branch II	
INCIDENT METEOROLOGIST	MARK STUBBLEFIELD	BRANCH DIRECTOR	JEFF SCHARDT
TRAINING SPECIALIST	KELLY BALCARCZYK (T)	DIVISION/GROUP	N/O/P GREG TITUS
HUMAN RESOURCE SPECIALIST	LINDA BUCK K. CAHOON (T)	DIVISION/GROUP	STRUCTURE ALISON COONS
READ - BDNF	RYAN POWELL	DIVISION/GROUP	Z ALISON COONS
READ - BNF	RYAN HUGHES	DIVISION/GROUP	STAGING - LIL HOGBACK
BLM READ	LEA TUTTLE	DIVISION/GROUP	NIGHT SHIFT BERT PLANTE
B-D READ	WADE JEROME	Branch III	
LOLO READ	KATE ARENDT	DIVISION/GROUP	A/E JOE BURGETT
		DIVISION/GROUP	I J. BRAND, J RUPP (T)
		DIVISION/GROUP	K SHANE STURGILL
		DIVISION/GROUP	R/T BRIAN BROWNING, JACOB JERESEK (T)
		DIVISION/GROUP	W KELLY CORNWALL
		7b. Air Operations Branch:	
		AIR OPS BRANCH DIRECTOR	LYNNE HOWARD, BART KICKLIGHTER (T)
		HELIBASE MANAGER	BRAD BERNARDY
		AIR SUPPORT SUPERVISOR	TERESA L WILLIAMSON
9. Prepared By: Name: DONNA THOMAS		Position/Title: RESL	Signature:
ICS 203	IAP Page	Date/Time: 09/11/2017 2100	

ORGANIZATION ASSIGNMENT LIST (ICS 203)

1. Incident Name:		2. Operational Period: 0700 - 2000															
MEYERS SAPPHIRE COMPLEX		Date/Time From: 09/12/2017 0700 TUE	Date/Time To: 09/12/2017 2000 TUE														
<table border="1" style="width: 100%; border-collapse: collapse;"> <tr> <td colspan="2">8. Finance/Administration Section:</td> </tr> <tr> <td style="width: 15%;">CHIEF</td> <td>BONNY JOHNSON</td> </tr> <tr> <td>DEPUTY</td> <td>SANDRA MORRIS, JENNY CROSS (T)</td> </tr> <tr> <td>COMPENSATION UNIT</td> <td>ALICE BARNETTE DORIS DOSTER</td> </tr> <tr> <td>COST UNIT</td> <td>KARILYN PUTT (T)</td> </tr> <tr> <td>TIME UNIT</td> <td>JEAN FRICK JUDY GAU (T)</td> </tr> <tr> <td> </td> <td> </td> </tr> </table>				8. Finance/Administration Section:		CHIEF	BONNY JOHNSON	DEPUTY	SANDRA MORRIS, JENNY CROSS (T)	COMPENSATION UNIT	ALICE BARNETTE DORIS DOSTER	COST UNIT	KARILYN PUTT (T)	TIME UNIT	JEAN FRICK JUDY GAU (T)		
8. Finance/Administration Section:																	
CHIEF	BONNY JOHNSON																
DEPUTY	SANDRA MORRIS, JENNY CROSS (T)																
COMPENSATION UNIT	ALICE BARNETTE DORIS DOSTER																
COST UNIT	KARILYN PUTT (T)																
TIME UNIT	JEAN FRICK JUDY GAU (T)																
9. Prepared By: Name: DONNA THOMAS		Position/Title: RESL	Signature: 														
ICS 203	IAP Page	Date/Time: 09/11/2017 2100															



FIRE WEATHER FORECAST



Forecast No. 51

Name of Fire: Meyers Sapphire Complex

Prediction for: Day Shift

Unit: Beaverhead-Deer Lodge National Forest

Shift Date: 09/12/17 Tuesday

Time & Date Issued: 1835 MDT 09/11/17

Signed: Mark Stubblefield, IMET *MS*

Weather Discussion: High pressure will begin to move east today allowing moisture to move over the area from the southwest. This will bring a chance of showers and thunderstorms late today into Wednesday morning. Much cooler and wet weather will settle in over western Montana Thursday through Saturday. The snow level could drop to 9000 feet by Thursday evening, 6500 feet by Friday afternoon, and 6000 feet Saturday morning.

Today...

Weather & Sky: Partly cloudy with a slight (10%) chance of showers and thunderstorms late in the afternoon.

Meyers Fire: (6000 to 8500 feet):

Max Temp: 73 to 80°F (Trend: little change)

Min Humidity: 13 to 16% below 6500 18 to 22% above 6500 feet. (Trend: little change)

Hogback Fire: (4000-6000 feet):

Max Temp: Valleys 87 to 92 Ridges 77-80°F

Min RH: Valleys 11 to 14% Ridges 17-20%

Valley Wind (20 Ft): Upslope/valley 3-5 mph until 1000, southwest winds 10-15 MPH by late morning.

Transport winds: SW 13 MPH. Mixing Height: 16500 MSL

Ridgetop Wind (20 Ft): West 13 to 18 MPH.

Haines Index: 5 (moderate)

LAL: 2

Tonight...

Weather & Sky: Increasing clouds with a chance of showers and thunderstorms (30%).

Meyers Fire: (6000 to 8500 feet):

Min Temp: 45 to 50°F.

Max Humidity: 80 to 90%.

Hogback Fire: (4000-6000 feet):

Min Temp: 48 to 52°F.

Max RH: 70 to 78%.

Winds (20 Foot): SW 8 to 12 MPH until around 1900...then downcanyon 2 to 4 MPH.

Inversions may not form tonight due to the unstable air moving over the area. LAL: 3

Outlook For Wednesday...Chance of morning showers and thunderstorms...otherwise partly cloudy. Max Temp 73 to 83 F, Min RH 20 to 28%. 20-ft Winds Upslope/valley 3-5 MPH, then SW 10 to 15 MPH after 1100. Mixing level 15,000 MSL Transport winds: SW 13 to 18 MPH. Haines Index: 4 (low). Ridgetop Wind (20 Ft): Southwest 15 to 20 MPH.

Extended Outlook Monday through Wednesday

	<u>Max T</u>	<u>Min RH</u>	<u>1500 Wind Dir</u>	<u>1500 Wind spd</u>	<u>Sky / Precipitation</u>
<u>Thursday</u>	58-68	40%	NE	8 MPH	Rain with snow above 9000 feet.
<u>Friday</u>	44-55	55%	NE	18 MPH	Rain with snow down to 6000-6500 feet.
<u>Saturday</u>	55-60	52%	SW	8 MPH	Rain and snow showers early...then chance of showers.

FIRE BEHAVIOR FORECAST

FORECAST NUMBER: 51	TYPE OF FIRE: Wildfire
FIRE NAME: Meyers & Sapphire Complex	OPERATIONAL PERIOD: Day 09/12/2017 Tuesday
DATE ISSUED: 09/11/2017	TIME ISSUED: 1700 <i>Brenda Dale</i>
UNIT: MT-BDF	PREPARED BY: Bruce Davenport FBAN/Brenda Dale FBANt

INPUTS

WEATHER SUMMARY: Similar temperatures, lower humidities and same wind as yesterday.

Temps: Meyers 73-80°F Hogback 77-92 °F **RH:** Valley 11-16% Ridges 17-22% **Winds: Ridges:** West 13-18 mph.
Valleys: Upslope early at 3-5 mph increasing and SW 10-15 mph until 1900 then switching to down canyon 2-4 mph.
Haines Index: 5

OUTPUTS – FIRE BEHAVIOR

General:

Meyers Fire: With minimum humidity continuing to drop, surface fire spread will become more active, especially in unsheltered fuels. Heavy fuels are very dry and remain the main driver of fire spread. Expect sustained surface and group torching where the alignment of wind, heavy fuels or slope occurs, especially when exposed to direct sunlight. Where sheltered from the wind, the fire will follow topography and fuels. Rollout will encourage the fire to become established lower on the slopes for potential upslope runs.

Little Hogback Fire: Fire will continue to smolder in heavy fuels and duff. Exposed areas may experience single tree torching and short range spotting. Lofted embers will most likely create a spot fire on receptive fuels. Light grass fuels will spread readily on slopes.

SPECIFIC:

FUELS: Mixed conifer forest dominated by lodgepole pine, subalpine fir, Engelmann spruce, and Douglas-fir, with isolated pockets of whitebark pine on ridgetops.

- The southwest winds will provide the most opportunity for growth in exposed fuels on DIVS W & A.
- Beetle-killed lodgepole pine makes up 20-40% of forest canopy in the fire area.
- Heavy dead/down fuels from bug kill, previous wildfires and decadent forests are burning completely. Recent fire scars are inhibiting surface spread where present.
- On the Meyers Fire, valley bottom forests, wet meadows and drainages are green and will discourage surface fire spread. Live fuels on upper slopes continue to cure on all aspects.

Fine Fuels 4-7%; ERC values have been at record setting highs; 1000 hour fuel moistures have been at record setting lows.

Output Variable	Meyers Fire		Little Hogback Fire	
	Timber Fuel Model (FM10 (80%) and TU2 (20%))		Grass/Sage (GS2)	Lodgepole Pine/Fir/Spruce (FM8 (60%) & FM10 (40%))
	Sheltered	Unsheltered		
Surface Rate of Spread (ch/hr)	8-18	11-32	22-69	5-15
Flame Length (Feet)	5-8	6-10	5-9	6-10
Probability of Ignition (%)	73	73	74	74
Spotting Distance (miles)	.1-.4	.1-.4	.1 - .4	.1 - .4

AIR OPERATIONS: Persistent morning inversion may not form allowing earlier aerial missions today.

SAFETY: The steep terrain, older timber stands and bug and disease killed trees create safety and fire behavior concerns to firefighters. Rolling hazard exist when burned off snags roll and slide downhill starting new fires and sometime collecting firefighters along the way.

Division/Group Assignment List (ICS 204 WF)

1. Incident Name:			3.			
MEYERS SAPPHIRE COMPLEX			I		G	
2. Operational Period: 0700 - 2000						
Date/Time From: 09/12/2017 0700 TUE		Date/Time To: 09/12/2017 2000 TUE				
4. Operations Personnel						
OPERATIONS CHIEF		PETER MYERS, DAVID WALKER		BRANCH DIRECTOR		JEFF SCHARDT
PLANNING OPS		JAMIE SCHWARTZ, JEREMY BRAND (T)		DIVISION SUPERVISOR		JON MCLAUGHLIN, JON FRY (T)
				AIR OPERATIONS DIRECTOR		LYNNE HOWARD BART KICKLIGHTER (T)
5. Resources Assigned this Period						
Strike Team / Task Force / Resource Designator		LWD	Leader	Number Persons	Drop Off PT./Time	Pick Up PT./Time
TFLD			JEREMIAH HANKS	1	GOAT SPIKE /0700	GOAT SPIKE/2000
TFLD			TONY BALLOU	1	GOAT SPIKE /0700	GOAT SPIKE/2000
TFLD			KEITH HALLORAN	1	GOAT SPIKE /0700	GOAT SPIKE/2000
HEQB			ARIC RASMUSSEN	1	GOAT SPIKE /0700	GOAT SPIKE/2000
HEQB		09/13	MONICA THOMAS	1	GOAT SPIKE /0700	GOAT SPIKE/2000
HEQB ((T))			DAVE MEGORDON	1	GOAT SPIKE /0700	GOAT SPIKE/2000
O-529 HEQB (T)		09/23	JASON WALKER	1	GOAT SPIKE /0700	GOAT SPIKE/2000
O-122 FAL 1 TIMBER TRAIL		09/18	SEITZ & CHITWOOD	2	GOAT SPIKE /0700	GOAT SPIKE/2000
E-930 ENG3					GOAT SPIKE /0700	GOAT SPIKE/2000
E-482 ENG3					GOAT SPIKE /0700	GOAT SPIKE/2000
E-187 ENG6 NORTH IDAHO FIRE		09/15	JOHN LAUTENSLAGER	3	GOAT SPIKE /0700	GOAT SPIKE/2000
E-190 WTS2 CASTLE MTN FIRE		09/21	BOB BASTRUP	1	GOAT SPIKE /0700	GOAT SPIKE/2000
E-192 WTS2 BIRD WATER #8		09/16	RAY CONGDON	1	GOAT SPIKE /0700	GOAT SPIKE/2000
E-70 DOZ2 MADDEN TRUCKING		09/15	MOSES MADDEN	2	GOAT SPIKE /0700	GOAT SPIKE/2000
E-265 DOZ3		09/22	BRAD SMITH	1	GOAT SPIKE /0700	GOAT SPIKE/2000
E-177 SKG2		09/23	ANDY JOHNSON	2	GOAT SPIKE /0700	GOAT SPIKE/2000
E-44 SKG3 SLACK		09/15	JAMIE SLACK	1	GOAT SPIKE /0700	GOAT SPIKE/2000
E-243 EXCA T1 ST. ONGE W/LOWBOY		09/16	EVAN SIPPL	2	GOAT SPIKE /0700	GOAT SPIKE/2000
8. Division/Group Communication Summary						
Function	Channel	RX Frequency N/W	RX Tone/NAC	TX Frequency N/W	TX Tone/NAC	Mode
COMMAND	10	164.6750N	123.0	169.8125N	123.0	A
TACTICAL	1	168.0500N	123.0	168.0500N	123.0	A
AIR TO GROUND	14	169.1500N		169.1500N		A
AIR TO GROUND	15	169.0875N		169.0875N		A
AIR GUARD	16	168.6250N		168.6250N	110.9	
9. Prepared By (Resource Unit Leader)			Approved By (Planning Section Chief)		Date	Time
DONNA THOMAS - RESL			TERRY PIERCE - PSC1 <i>T. Pierce</i>		09/11/2017	2100

Division/Group Assignment List (ICS 204 WF)

1. Incident Name:			3.			
MEYERS SAPPHIRE COMPLEX			Branch:		Division/Group:	
2. Operational Period: 0700 - 2000			I		G	
Date/Time From: 09/12/2017 0700 TUE		Date/Time To: 09/12/2017 2000 TUE				
4. Operations Personnel						
OPERATIONS CHIEF		PETER MYERS, DAVID WALKER		BRANCH DIRECTOR JEFF SCHARDT		
PLANNING OPS		JAMIE SCHWARTZ, JEREMY BRAND (T)		DIVISION SUPERVISOR JON MCLAUGHLIN, JON FRY (T)		
				AIR OPERATIONS DIRECTOR LYNNE HOWARD BART KICKLIGHTER (T)		
5. Resources Assigned this Period						
Strike Team / Task Force / Resource Designator		LWD	Leader	Number Persons	Drop Off PT./Time	Pick Up PT./Time
E-262 EXCA T1 WESTERN MONTANA W/LOWBOY		09/19	WYATT LYONS	2	GOAT SPIKE /0700	GOAT SPIKE/2000
E-232 EXCA T2 WELCH BROS W/LOWBOY		09/25	FRANK COSANA	2	GOAT SPIKE /0700	GOAT SPIKE/2000
E-258 EXCA		09/16	BILL NELSON	2	GOAT SPIKE /0700	GOAT SPIKE/2000
E-242 LOG TRUCK JOE THOMAS		09/14	JOE THOMAS	1	GOAT SPIKE /0700	GOAT SPIKE/2000
E-260 SELF LOADING LOG TRUCK		09/17	JUSTIN HULFORD	1	GOAT SPIKE /0700	GOAT SPIKE/2000
E-251 LOG LOADER BRYANT W/LOWBOY		09/14	BRYCE RASMUSSEN	2	GOAT SPIKE /0700	GOAT SPIKE/2000
E-263 LOG LOADER RUSS REED LOGGING W/LOWBOY		09/20	STEVE KINZEL	2	GOAT SPIKE /0700	GOAT SPIKE/2000
E-54 UTV		11/07			GOAT SPIKE /0700	GOAT SPIKE/2000
0-488 AEMT			TERRY WILLIAMSON	1	GOAT SPIKE /0700	GOAT SPIKE/2000
0-415 SOF2 (T)		09/18	WESTON BURCH	1	GOAT SPIKE/0700	GOAT SPIKE/2000
6. Control Operations/Work Assignments:						
Task: Implement suppression rehab on north and east ends of Goat Creek Fire. Mop up all potential threatening hot spots along the fire edge on the east side of Goat Creek.						
Purpose: Minimize acres burned on Division G and complete suppression rehab.						
End State: Execute full suppression fire management strategies using direct protection strategies. Complete fire suppression rehab while minimizing exposure and impacts to critical values at risk.						
7. Special Instructions:						
8. Division/Group Communication Summary						
Function	Channel	RX Frequency N/W	RX Tone/NAC	TX Frequency N/W	TX Tone/NAC	Mode
COMMAND	10	164.6750N	123.0	169.8125N	123.0	A
TACTICAL	1	168.0500N	123.0	168.0500N	123.0	A
AIR TO GROUND	14	169.1500N		169.1500N		A
AIR TO GROUND	15	169.0875N		169.0875N		A
AIR GUARD	16	168.6250N		168.6250N	110.9	
9. Prepared By (Resource Unit Leader)			Approved By (Planning Section Chief)		Date	Time
DONNA THOMAS - RESL			TERRY PIERCE - PSC1 <i>T. Pierce</i>		09/11/2017	2100

Division/Group Assignment List (ICS 204 WF)

1. Incident Name:			3.			
MEYERS SAPPHIRE COMPLEX			Branch:		Division/Group:	
2. Operational Period: 0700 - 2000			I		G	
Date/Time From: 09/12/2017 0700 TUE		Date/Time To: 09/12/2017 2000 TUE				
4. Operations Personnel						
OPERATIONS CHIEF		PETER MYERS, DAVID WALKER		BRANCH DIRECTOR JEFF SCHARDT		
PLANNING OPS		JAMIE SCHWARTZ, JEREMY BRAND (T)		DIVISION SUPERVISOR JON MCLAUGHLIN, JON FRY (T)		
				AIR OPERATIONS DIRECTOR LYNNE HOWARD BART KICKLIGHTER (T)		
7. Special Instructions:						
Complete maintenance of equipment as appropriate and maintain readiness to engage as directed by operations.						
8. Division/Group Communication Summary						
Function	Channel	RX Frequency N/W	RX Tone/NAC	TX Frequency N/W	TX Tone/NAC	Mode
COMMAND	10	164.6750N	123.0	169.8125N	123.0	A
TACTICAL	1	168.0500N	123.0	168.0500N	123.0	A
AIR TO GROUND	14	169.1500N		169.1500N		A
AIR TO GROUND	15	169.0875N		169.0875N		A
AIR GUARD	16	168.6250N		168.6250N	110.9	
9. Prepared By (Resource Unit Leader)		Approved By (Planning Section Chief)		Date		Time
DONNA THOMAS - RESL		TERRY PIERCE - PSC1 <i>J. Pierce</i>		09/11/2017		2100

Division/Group Assignment List (ICS 204 WF)

1. Incident Name:			3.			
MEYERS SAPPHIRE COMPLEX			Branch:		Division/Group:	
2. Operational Period: 0700 - 2000			II		N/O/P	
Date/Time From: 09/12/2017 0700 TUE		Date/Time To: 09/12/2017 2000 TUE				
4. Operations Personnel						
OPERATIONS CHIEF		PETER L MYERS DAVID P WALKER		DIVISION/GROUP SUPERVISOR		GREG TITUS
PLANNING OPS		JAMIE SCHWARTZ, JEREMY BRAND (T)		AIR OPERATIONS DIRECTOR		LYNNE HOWARD BART KICKLIGHTER (T)
5. Resources Assigned this Period						
Strike Team / Task Force / Resource Designator		LWD	Leader	Number Persons	Drop Off PT./Time	Pick Up PT./Time
O-495 TFLD		09/12	KEVIN PARRISH	1	MEYERS ICP/0700	MEYERS ICP/2000
O-388 TFLD (T)		09/15	LUCAS HARLEY	1	MEYERS ICP/0700	MEYERS ICP/2000
E-185 ENG3 WILDFIRE RESOURCES		09/13	REAGAN FARLEY	3	MEYERS ICP/0700	MEYERS ICP/2000
E-48 ENG4 ALDER CREEK		09/24	BOYD CARR	3	MEYERS ICP/0700	MEYERS ICP/2000
E-188 ENG6 XTREME (T)		09/19	JOSH MINSHALL	3	MEYERS ICP/0700	MEYERS ICP/2000
E-126 WTS1 HIGHSIERRA ENTERPRISE		09/26	SCOTT HUBBARD	1	MEYERS ICP/0700	MEYERS ICP/2000
E-125 WTT2 R&J GRANGER		09/24	GARY KNUDSON	1	MEYERS ICP/0700	MEYERS ICP/2000
E-132 WTS2 PRIMMER TENDER		09/14	REBECCA DAUL	1	MEYERS ICP/0700	MEYERS ICP/2000
O-451 HEQB		09/23	ANTHONY MOORE	2	MEYERS ICP/0700	MEYERS ICP/2000
E-261 EXCA LITTLE BEAR CONTRUCTION W/ LOWBOY		09/20	MIKE HILL	1	MEYERS ICP/0700	MEYERS ICP/2000
E-40 SKDS HALL WOOD PROCESSING		09/16	JEFF WEER	1	MEYERS ICP/0700	MEYERS ICP/2000
E-12 ENG6 CEDAR FIRE		09/12	TED HUNTER	3	MEYERS ICP/0700	MEYERS ICP/2000
E-194 WTS2 BIRD WATER #6		09/16	TODD BENEDICT	1	MEYERS ICP/0700	MEYERS ICP/2000
E-191 WTS2		09/16	MIKE THOMAS	1	MEYERS ICP/0700	MEYERS ICP/2000
E-79 WTT2 MISSION MTN STAR		09/22	SCOTT HARMON	1	MEYERS ICP/0700	MEYERS ICP/2000
O-218 EMTF		09/13	JOHNNY HYDE	1	MEYERS ICP/0700	MEYERS ICP/2000
O-704 EMTF		09/24	GARY SIMPSON	1	MEYERS ICP/0700	MEYERS ICP/2000
8. Division/Group Communication Summary						
Function	Channel	RX Frequency N/W	RX Tone/NAC	TX Frequency N/W	TX Tone/NAC	Mode
COMMAND	9	166.3375N	123.0	170.3875N	123.0	A
TACTICAL	3	168.6000N	123.0	168.6000N	123.0	A
AIR TO GROUND	14	169.1500N		169.1500N		A
AIR TO GROUND	15	169.0875N		169.0875N		A
AIR GUARD	16	168.6250N		168.6250N	110.9	
9. Prepared By (Resource Unit Leader)		Approved By (Planning Section Chief)			Date	Time
DONNA THOMAS - RESL		TERRY PIERCE - PSC1 <i>T. Pierce</i>			09/11/2017	0753

Division/Group Assignment List (ICS 204 WF)

1. Incident Name:			3.			
MEYERS SAPPHIRE COMPLEX			Branch:		Division/Group:	
2. Operational Period: 0700 - 2000			II		N/O/P	
Date/Time From: 09/12/2017 0700 TUE	Date/Time To: 09/12/2017 2000 TUE					
4. Operations Personnel						
OPERATIONS CHIEF		PETER L MYERS DAVID P WALKER		DIVISION/GROUP SUPERVISOR GREG TITUS		
PLANNING OPS		JAMIE SCHWARTZ, JEREMY BRAND (T)		AIR OPERATIONS DIRECTOR LYNNE HOWARD BART KICKLIGHTER (T)		
5. Resources Assigned this Period						
Strike Team / Task Force / Resource Designator	LWD	Leader	Number Persons	Drop Off PT./Time	Pick Up PT./Time	
0-445 SOF2	09/12	CRAIG COWIE	1	MEYERS ICP/0700	MEYERS ICP/2000	
E-3 AMBU THREE RIVERS	10/01	WESTGARD & HAGESTAD	2	MEYERS ICP/0700	MEYERS ICP/2000	
6. Control Operations/Work Assignments:						
Task: Patrol and mop-up along fire edge. Provide support to other divisions as necessary. Work with READ to identify suppression repair needs.						
Purpose: Minimize acres burned and impacts to resources at risk.						
End State: Execute full suppression. Keep fire north of Rock Creek and west of Upper Willow Creek.						
7. Special Instructions:						
Identify and remove excess equipment and back haul as appropriate.						
8. Division/Group Communication Summary						
Function	Channel	RX Frequency N/W	RX Tone/NAC	TX Frequency N/W	TX Tone/NAC	Mode
COMMAND	9	166.3375N	123.0	170.3875N	123.0	A
TACTICAL	3	168.6000N	123.0	168.6000N	123.0	A
AIR TO GROUND	14	169.1500N		169.1500N		A
AIR TO GROUND	15	169.0875N		169.0875N		A
AIR GUARD	16	168.6250N		168.6250N	110.9	
9. Prepared By (Resource Unit Leader)		Approved By (Planning Section Chief)		Date	Time	
DONNA THOMAS - RESL		TERRY PIERCE - PSC1 <i>J. Pierce</i>		09/11/2017	0753	

Division/Group Assignment List (ICS 204 WF)

1. Incident Name:		3.				
MEYERS SAPPHIRE COMPLEX		II	Branch:		Division/Group:	
2. Operational Period: 0700 - 2000			STAGING - LIL HOGBACK			
Date/Time From: 09/12/2017 0700	TUE		Date/Time To: 09/12/2017 2000	TUE		
4. Operations Personnel						
OPERATIONS CHIEF	PETER MYERS DAVID WALKER		BRANCH DIRECTOR	JEFF SCHARDT		
PLANNING OPS	JAMIE SCHWARTZ JEREMY BRAND (T)		AIR OPERATIONS DIRECTOR	LYNNE HOWARD (T) BART KICKLIGHTER (T)		
5. Resources Assigned this Period						
Strike Team / Task Force / Resource Designator	LWD	Leader	Number Persons	Drop Off PT./Time	Pick Up PT./Time	
E-179 SKDS WILDLAND FIREFIGHTERS	09/17	LARRY PEASE	2	MEYERS ICP/0700	MEYERS ICP/2000	
E-182 SKDS ATTACK #3	09/13	CHRIS DESORCY	2	MEYERS ICP/0700	MEYERS ICP/2000	
E-267 DUMP TRUCK ALL TERRAIN TRUCKING	09/21	TERRELL THOMAS	1	MEYERS ICP/0700	MEYERS ICP/2000	
6. Control Operations/Work Assignments:						
7. Special Instructions: Complete maintenance of equipment as appropriate and maintain readiness to engage as directed by operations.						
8. Division/Group Communication Summary						
Function	Channel	RX Frequency N/W	RX Tone/NAC	TX Frequency N/W	TX Tone/NAC	Mode
COMMAND	8	169.5375N	123.0	164.7125N	123.0	A
COMMAND	9	166.3375N	123.0	170.3875N	123.0	A
TACTICAL	4	168.7250N	123.0	168.7250N	123.0	A
AIR TO GROUND	14	169.1500N		169.1500N		A
AIR TO GROUND	15	169.0875N		169.0875N		A
AIR GUARD	16	168.6250N		168.6250N	110.9	
9. Prepared By (Resource Unit Leader)		Approved By (Planning Section Chief)		Date	Time	
DONNA THOMAS - RESL		TERRY PIERCE - PSC1		09/11/2017	0753	


Division/Group Assignment List (ICS 204 WF)

1. Incident Name:			3.			
MEYERS SAPPHIRE COMPLEX			II		STRUCTURE	
2. Operational Period: 0700 - 2000						
Date/Time From: 09/12/2017 0700 TUE		Date/Time To: 09/12/2017 2000 TUE				
4. Operations Personnel						
OPERATIONS CHIEF		PETER MYERS DAVID WALKER		DIVISION/GROUP SUPERVISOR		ALISON COONS
PLANNING OPS		JAMIE SCHWARTZ JEREMY BRAND (T)		AIR OPERATIONS DIRECTOR		LYNNE HOWARD BART KICKLIGHTER (T)
5. Resources Assigned this Period						
Strike Team / Task Force / Resource Designator		LWD	Leader	Number Persons	Drop Off PT./Time	Pick Up PT./Time
O-244 TFLD		09/23	DAN WHITE	1	MEYERS ICP /0700	MEYERS ICP /2000
E-234.1 TFLD (T)		09/16	JOSH STROHMEYER	1	MEYERS ICP /0700	MEYERS ICP /2000
E-46 ENG3 HART VENTURES 414253		09/17	WYATT LAWRENCE	3	MEYERS ICP/0700	MEYERS ICP/2000
E-45 ENG4 INLAND FOREST MGMT.		09/24	CHRIS TERWILLIGER	3	MEYERS ICP /0700	MEYERS ICP /2000
E-124 ENG4 OUTBACK FIREFIGHTING		09/21	KARL PESO	3	MEYERS ICP /0700	MEYERS ICP /2000
E-189 ENG4 NATIONAL WILDLAND FIRE		09/19	LEENKUN BACA	3	MEYERS ICP /0700	MEYERS ICP /2000
E-48 ENG4 ALDER CREEK			ROYD CARR	3	MEYERS ICP/0700	MEYERS ICP/2000
E-133 WTS2 BUTLER ENTERPRISES		09/12	NICK DOLE	1	MEYERS ICP /0700	MEYERS ICP /2000
6. Control Operations/Work Assignments:						
Protect structures in Upper Willow Creek Drainage, Idle Ranch and Trout Retreat. Maintain structure protection equipment at Upper Willow structures. Provide support to adjacent Divisions as needed. Maintain IA readiness, backfill any structure protection needs with Engines from adjacent divisions. Identify and remove excess equipment.						
7. Special Instructions:						
Identify and map structures. Work with liaison Officer to advise and coordinate with with potentially affected private landowners. Gather GPS tracks of all constructed line in Division and turn into the Situation Unit.						
Specific hazard mitigations:						
<ul style="list-style-type: none"> • Review the Wildland Urban interface "watch out" situations on page 12 of the IRPG. • For IA, establish LCES and determine trigger points. 						
8. Division/Group Communication Summary						
Function	Channel	RX Frequency N/W	RX Tone/NAC	TX Frequency N/W	TX Tone/NAC	Mode
COMMAND	8	169.5375N	123.0	164.7125N	123.0	A
COMMAND	9	166.3375N	123.0	170.3875N	123.0	A
TACTICAL	4	168.7250N	123.0	168.7250N	123.0	A
AIR TO GROUND	14	169.1500N		169.1500N		A
AIR TO GROUND	15	169.0875N		169.0875N		A
AIR GUARD	16	168.6250N		168.6250N	110.9	
9. Prepared By (Resource Unit Leader)			Approved By (Planning Section Chief)		Date	Time
DONNA THOMAS - RESL			TERRY PIERCE - PSC1 <i>J. Pierce</i>		09/11/2017	0753

Division/Group Assignment List (ICS 204 WF)

1. Incident Name:			3.			
MEYERS SAPPHIRE COMPLEX			II		Z	
2. Operational Period: 0700 - 2000						
Date/Time From: 09/12/2017 0700 TUE		Date/Time To: 09/12/2017 2000 TUE				
4. Operations Personnel						
OPERATIONS CHIEF		PETER MYERS DAVID WALKER		DIVISION/GROUP SUPERVISOR		ALISON COONS
PLANNING OPS		JAMIE SCHWARTZ JEREMY BRAND (T)		AIR OPERATIONS DIRECTOR		LYNNE HOWARD BART KICKLIGHTER (T)
5. Resources Assigned this Period						
Strike Team / Task Force / Resource Designator		LWD	Leader	Number Persons	Drop Off PT./Time	Pick Up PT./Time
O-459 TFLD		09/13	PATRICK KIERAN	1	MEYERS ICP/0700	MEYERS ICP/2000
O-460 TFLD (T)		09/13	TODD AYRES	1	MEYERS ICP/0700	MEYERS ICP/2000
E-9 ENG3 HART VENTURES		09/22	CHRIS OLSEN	3	MEYERS ICP/0700	MEYERS ICP/2000
E-33 ENG4 DRAGON FIGHTERS E-41 (T)		09/16	LEVI DUFFORD	3	MEYERS ICP/0700	MEYERS ICP/2000
E-30 ENG6 RED TRUCK WILDFIRE		09/16	RAY BROWN	3	MEYERS ICP/0700	MEYERS ICP/2000
E-234 ENG6 IL-MPF		09/16	SHAUN TRABADO	4	MEYERS ICP/0700	MEYERS ICP/2000
E-122 ENG6 GRIZ ONE		09/21	BOB RAADE	3	MEYERS ICP/0700	MEYERS ICP/2000
E-178 SKG2 SOFT TRACK ATTACK #2		09/18		2	MEYERS ICP/0700	MEYERS ICP/2000
E-46 UTV OUTBACK FIREFIGHTING LLC					MEYERS ICP/0700	MEYERS ICP/2000
E-47 UTV OUTBACK FIREFIGHTING LLC					MEYERS ICP/0700	MEYERS ICP/2000
E-119 UTV OUTBACK FIRE 747318					MEYERS ICP/0700	MEYERS ICP/2000
E-241 UTV CM BACKCOUNTRY RENTALS					MEYERS ICP/0700	MEYERS ICP/2000
O-457 EMPF		09/19	REX NIELSEN	1	MEYERS ICP/0700	MEYERS ICP/2000
O-462 SOF2		09/15	GARY SEXTON	1	MEYERS ICP/0700	MEYERS ICP/2000
6. Control Operations/Work Assignments:						
Task: Continue mop-up and cold trail fire edge along division break. Utilize aircraft, engines and fire personnel to hold fire north and east of Rock Creek Road. Provide protection to structures.						
Purpose: Minimize acres burned and impacts to resources at risk.						
End State: Execute full suppression. Keep fire east of Rock Creek and minimize impacts to values at risk.						
8. Division/Group Communication Summary						
Function	Channel	RX Frequency N/W	RX Tone/NAC	TX Frequency N/W	TX Tone/NAC	Mode
COMMAND	8	169.5375N	123.0	164.7125N	123.0	A
TACTICAL	2	168.2000N	123.0	168.2000N	123.0	A
AIR TO GROUND	14	169.1500N		169.1500N		A
AIR TO GROUND	15	169.0875N		169.0875N		A
AIR GUARD	16	168.6250N		168.6250N	110.9	
9. Prepared By (Resource Unit Leader)			Approved By (Planning Section Chief)		Date	Time
DONNA THOMAS - RESL			TERRY PIERCE - PSC1 <i>J. Pierce</i>		09/11/2017	2100

Division/Group Assignment List (ICS 204 WF)

1. Incident Name:			3.			
MEYERS SAPPHIRE COMPLEX			Branch:		Division/Group:	
2. Operational Period: 0700 - 2000			II		Z	
Date/Time From: 09/12/2017 0700 TUE		Date/Time To: 09/12/2017 2000 TUE				
4. Operations Personnel						
OPERATIONS CHIEF		PETER MYERS DAVID WALKER		DIVISION/GROUP SUPERVISOR		
PLANNING OPS		JAMIE SCHWARTZ JEREMY BRAND (T)		ALISON COONS LYNNE HOWARD BART KICKLIGHTER (T)		
7. Special Instructions:						
Identify and remove excess equipment and back haul as appropriate.						
8. Division/Group Communication Summary						
Function	Channel	RX Frequency N/W	RX Tone/NAC	TX Frequency N/W	TX Tone/NAC	Mode
COMMAND	8	169.5375N	123.0	164.7125N	123.0	A
TACTICAL	2	168.2000N	123.0	168.2000N	123.0	A
AIR TO GROUND	14	169.1500N		169.1500N		A
AIR TO GROUND	15	169.0875N		169.0875N		A
AIR GUARD	16	168.6250N		168.6250N	110.9	
9. Prepared By (Resource Unit Leader)		Approved By (Planning Section Chief)		Date		Time
DONNA THOMAS - RESL		TERRY PIERCE - PSC1 		09/11/2017		2100

Division/Group Assignment List (ICS 204 WF)

1. Incident Name:			3.			
MEYERS SAPPHIRE COMPLEX			II		NIGHT SHIFT	
2. Operational Period: NIGHT						
Date/Time From: 09/12/2017 1800 TUE		Date/Time To: 09/13/2017 0700 WED				
4. Operations Personnel						
OPERATIONS CHIEF		PETER MYERS DAVID WALKER		DIVISION SUPERVISOR		BERT PLANTE
PLANNING OPS		JAMIE SCHWARTZ JEREMY BRAND (T)		AIR OPERATIONS DIRECTOR		LYNNE HOWARD
5. Resources Assigned this Period						
Strike Team / Task Force / Resource Designator		LWD	Leader	Number Persons	Drop Off PT./Time	Pick Up PT./Time
E-26 ENG4 FIRECO		09/18	CLAYTON CONSTANT	3	MEYERS ICP/1800	MEYERS ICP/0700
E-44 ENG6 TORCH FIRE 63		09/14	TRINITY KRIVANEC	3	MEYERS ICP/1800	MEYERS ICP/0700
6. Control Operations/Work Assignments:						
Task: Patrol and mop up threats to resources along Rock Creek. Purpose: Minimize area boundary and impacts to resources at risk. End State: Execute full suppression.						
7. Special Instructions:						
8. Division/Group Communication Summary						
Function	Channel	RX Frequency N/W	RX Tone/NAC	TX Frequency N/W	TX Tone/NAC	Mode
TACTICAL	2	168.2000N	123.0	168.2000N	123.0	A
COMMAND	8	169.5375N	123.0	164.7125N	123.0	A
COMMAND	9	166.3375N	123.0	170.3875N	123.0	A
COMMAND	11	171.0375N	123.0	163.8250N	123.0	A
9. Prepared By (Resource Unit Leader)			Approved By (Planning Section Chief)		Date	Time
DONNA THOMAS - RESL			TERRY PIERCE - PSC1 <i>J. Pierce</i>		09/11/2017	0753

Division/Group Assignment List (ICS 204 WF)

1. Incident Name:			3.			
MEYERS SAPPHIRE COMPLEX			Branch:		Division/Group:	
2. Operational Period: 0700 - 2000			III		A/E	
Date/Time From: 09/12/2017 0700 TUE	Date/Time To: 09/12/2017 2000 TUE					
4. Operations Personnel						
OPERATIONS CHIEF		PETE MYERS DAVID WALKER		DIVISION/GROUP SUPERVISOR		
				JOE BURGETT		
PLANNING OPS		JAMIE SCHWARTZ, JEREMY BRAND (T)		AIR OPERATIONS DIRECTOR		
				LYNNE HOWARD BART KICKLIGHTER (T)		
5. Resources Assigned this Period						
Strike Team / Task Force / Resource Designator	LWD	Leader	Number Persons	Drop Off PT./Time	Pick Up PT./Time	
O-697 TFLD	09/25	JENNIFER NEPL	1	MEYERS ICP /0700	MEYERS ICP/2000	
O-247 MILLER CREEK MODULE 2 FAL1	09/19	VINCE NUZZO	2	MEYERS ICP /0700	MEYERS ICP/2000	
E-333 ENG4 INLAND FOREST	09/19	JOHN AILPORT	2	MEYERS ICP /0700	MEYERS ICP/2000	
E-39 ENG6 SCOTTS FIRE	09/15	DAVID HENDERSON	3	MEYERS ICP /0700	MEYERS ICP/2000	
E-304 ENG6 CARIBOU TARGHEE 632	09/12	AUSTIN NIELSON	4	MEYERS ICP /0700	MEYERS ICP/2000	
E-41 ENG6 BROCKWAY	09/24	RODGER BROCKWAY	3	MEYERS ICP /0700	MEYERS ICP/2000	
E-63 ENG6 HIGH DESERT	09/16	TOM HANKS	2	MEYERS ICP /0700	MEYERS ICP/2000	
NATIONAL GUARD TASK FORCE	09/13	PHINNEY/STAMPER	2	MEYERS ICP /0700	MEYERS ICP/2000	
E-312 ENGINE 50 ENG 50	09/13	CHRISTOPHER LEUCK	4	MEYERS ICP /0700	MEYERS ICP/2000	
E-313 ENGINE 50 ENG 51	09/13	DAVID LAMBERS	4	MEYERS ICP /0700	MEYERS ICP/2000	
E-314 TENDER 50 WT2	09/13	SARA STAFFORD	2	MEYERS ICP /0700	MEYERS ICP/2000	
E-315 TENDER 51 WT2	09/13	MATHEW MYSKEWITZ	2	MEYERS ICP /0700	MEYERS ICP/2000	
O-548 SOF2	09/16	DAVID CARTER	1	MEYERS ICP /0700	MEYERS ICP/2000	
E-246 AMBU	08/25	A1 AMBULANCE		MEYERS ICP /0700	MEYERS ICP/2000	
6. Control Operations/Work Assignments:						
<p>Task: Implement structure protection plan at Moose Lake Subdivision, Lolo Camp, and Helen's Cabin. Mop-up all spots on the east side of road 5106. Mop up previous burnout operation around DP1.</p> <p>Purpose: To secure structures at Moose Lake Subdivision, Lolo Camp and Helen's Cabin.</p> <p>End State: Protect values at risk and minimize impacts/threats to the Moose Lake Subdivision, Lolo Camp and Helen's Cabin.</p>						
8. Division/Group Communication Summary						
Function	Channel	RX Frequency N/W	RX Tone/NAC	TX Frequency N/W	TX Tone/NAC	Mode
COMMAND	9	168.5750N	114.8	173.6750N	114.8	A
TACTICAL	1	168.0500N	114.8	168.0500N	114.8	A
AIR TO GROUND	14	169.2000N		169.2000N		A
AIR TO GROUND	15	164.7500N		164.7500N		A
AIR GUARD	16	168.6250N		168.6250N	110.9	A
9. Prepared By (Resource Unit Leader)		Approved By (Planning Section Chief)		Date		Time
RICH AUBUCHON - RESL		TERRY PIERCE - PSC1 <i>T. Pierce</i>		09/11/2017		0753

Division/Group Assignment List (ICS 204 WF)

1. Incident Name:				3.			
MEYERS SAPPHIRE COMPLEX				Branch:		Division/Group:	
2. Operational Period: 0700 - 2000				III		A/E	
Date/Time From: 09/12/2017 0700 TUE		Date/Time To: 09/12/2017 2000 TUE					
4. Operations Personnel							
OPERATIONS CHIEF		PETE MYERS DAVID WALKER		DIVISION/GROUP SUPERVISOR		JOE BURGETT	
PLANNING OPS		JAMIE SCHWARTZ, JEREMY BRAND (T)		AIR OPERATIONS DIRECTOR		LYNNE HOWARD BART KICKLIGHTER (T)	
6. Control Operations/Work Assignments:							
7. Special Instructions:							
Refer to the 220 for aerial water use practices to prevent the spread of aquatic invasives.							
Saw out Road 5106 from DP 1 to DP 19.							
Identify IA resources within division.							
8. Division/Group Communication Summary							
Function	Channel	RX Frequency N/W	RX Tone/NAC	TX Frequency N/W	TX Tone/NAC	Mode	
COMMAND	9	168.5750N	114.8	173.6750N	114.8	A	
TACTICAL	1	168.0500N	114.8	168.0500N	114.8	A	
AIR TO GROUND	14	169.2000N		169.2000N		A	
AIR TO GROUND	15	164.7500N		164.7500N		A	
AIR GUARD	16	168.6250N		168.6250N	110.9	A	
9. Prepared By (Resource Unit Leader)			Approved By (Planning Section Chief)			Date	Time
RICH AUBUCHON - RESL			TERRY PIERCE - PSC1			09/11/2017	0753

Division/Group Assignment List (ICS 204 WF)

1. Incident Name:			3.			
MEYERS SAPPHIRE COMPLEX			Branch:		Division/Group:	
2. Operational Period: 0700 - 2000			III		I	
Date/Time From: 09/12/2017 0700 TUE		Date/Time To: 09/12/2017 2000 TUE				
4. Operations Personnel						
OPERATIONS CHIEF		PETER MYERS DAVID WALKER		DIVISION/GROUP SUPERVISOR		
PLANNING OPS		JAMIE SCHWARTZ JEREMY BRAND (T)		JEREMY BRAND JON RUPP (T)		
AIR OPERATIONS DIRECTOR				LYNNE HOWARD BART KICKLIGHTER (T)		
5. Resources Assigned this Period						
Strike Team / Task Force / Resource Designator		LWD	Leader	Number Persons	Drop Off PT./Time	Pick Up PT./Time
E-142 TIMBER TASK FORCE					EAST FORK SPIKE/0700	EAST FORK SPIKE/2000
E-142 HE TASK FORCE LEADER		09/14	JEFF HOLLIDAY	1	EAST FORK SPIKE/0700	EAST FORK SPIKE/2000
E-142 TIMBER FELLER BUNCHER		09/23	SKYE THOMAS	1	EAST FORK SPIKE/0700	EAST FORK SPIKE/2000
E-142 TIMBER DOZ2		09/14	BRAD MORIGEAU	1	EAST FORK SPIKE/0700	EAST FORK SPIKE/2000
E-142 TIMBER SKG2		09/14	KEITH BRANDEMIHL	1	EAST FORK SPIKE/0700	EAST FORK SPIKE/2000
E-142 TIMBER SKD2		09/20	CHASE STOKER	1	EAST FORK SPIKE/0700	EAST FORK SPIKE/2000
E-142 BLACK DIAMOND LOWBOY		09/27	JREMY FLICK	1	EAST FORK SPIKE/0700	EAST FORK SPIKE/2000
E-142 K-COMPANY LOWBOY		09/23	MARK CHRISTIAN	1	EAST FORK SPIKE/0700	EAST FORK SPIKE/2000
E-142 B MORE LOWBOY		09/17	JASON BANGEN	1	EAST FORK SPIKE/0700	EAST FORK SPIKE/2000
TFLD		09/17	RYAN WOIRHAYE	1	EAST FORK SPIKE/0700	EAST FORK SPIKE/2000
TFLD (T)		09/21	CORY RENNAKER	1	EAST FORK SPIKE/0700	EAST FORK SPIKE/2000
C-51.2 TFLD (T)		09/25	NICK WYDRA	1	EAST FORK SPIKE/0700	EAST FORK SPIKE/2000
C-51 LEWIS & CLARK IHC		09/12	MATT HOLMSTROM	21	EAST FORK SPIKE/0700	EAST FORK SPIKE/2000
E-182 ROCKY MOUNTIAN FIRE ENG3		09/14	RON GENTRY	3	EAST FORK SPIKE/0700	EAST FORK SPIKE/2000
E-289 GIST ENTERPRISES ENG3		09/23	LEW WALLACE	3	EAST FORK SPIKE/0700	EAST FORK SPIKE/2000
8. Division/Group Communication Summary						
Function	Channel	RX Frequency N/W	RX Tone/NAC	TX Frequency N/W	TX Tone/NAC	Mode
COMMAND	9	168.5750N	114.8	173.6750N	114.8	A
TACTICAL	3	168.6000N	114.8	168.6000N	114.8	A
AIR TO GROUND	14	169.2000N		169.2000N		A
AIR TO GROUND	15	164.7500N		164.7500N		A
AIR GUARD	16	168.6250N		168.6250N	110.9	A
9. Prepared By (Resource Unit Leader)			Approved By (Planning Section Chief)		Date	Time
RICH AUBUCHON - RESL			TERRY PIERCE - PSC1 <i>J. Pierce</i>		09/11/2017	0753

Division/Group Assignment List (ICS 204 WF)

1. Incident Name:			3.			
MEYERS SAPPHIRE COMPLEX			Branch:		Division/Group:	
2. Operational Period: 0700 - 2000			III		I	
Date/Time From: 09/12/2017 0700 TUE		Date/Time To: 09/12/2017 2000 TUE				
4. Operations Personnel						
OPERATIONS CHIEF		PETER MYERS DAVID WALKER		DIVISION/GROUP SUPERVISOR		JEREMY BRAND JON RUPP (T)
PLANNING OPS		JAMIE SCHWARTZ JEREMY BRAND (T)		AIR OPERATIONS DIRECTOR		LYNNE HOWARD BART KICKLIGHTER (T)
5. Resources Assigned this Period						
Strike Team / Task Force / Resource Designator		LWD	Leader	Number Persons	Drop Off PT./Time	Pick Up PT./Time
E-288 HOTSPOT FIRE ENG5		09/20	CATHY PALIN	3	EAST FORK SPIKE/0700	EAST FORK SPIKE/2000
E-268 ROCKY MOUNTAIN TIMBER ENG6		09/13	BRIAN CAHOON	3	EAST FORK SPIKE/0700	EAST FORK SPIKE/2000
E-342 METAL WORKS ENG6		09/18	EUGENE WEASEL	3	EAST FORK SPIKE/0700	EAST FORK SPIKE/2000
O-663 HEQB (T)		09/22	MIKE NOVA	1	EAST FORK SPIKE/0700	EAST FORK SPIKE/2000
E-59 CC STACKING DOZ2		09/12	CRAIG CORNELL	1	EAST FORK SPIKE/0700	EAST FORK SPIKE/2000
E-1 CC STACKING DOZ3		09/16	BILL WALKER	1	EAST FORK SPIKE/0700	EAST FORK SPIKE/2000
E-134 MELROSE VFD WTT2		09/21	GEORGE GOODY	1	EAST FORK SPIKE/0700	EAST FORK SPIKE/2000
E-264 ANDERSEN SEWER WTT2		09/22		1	EAST FORK SPIKE/0700	EAST FORK SPIKE/2000
E-5 SHERRILL LOGGING FELLER BUNCHER		09/15	JESSE SHERRILL	1	EAST FORK SPIKE/0700	EAST FORK SPIKE/2000
E-136 AC LOGGING SKD2		09/17	ALAN CONOVER	1	EAST FORK SPIKE/0700	EAST FORK SPIKE/2000
E-137 INTERMOUNTAIN SKD2		09/16	WILLIAM JOHNSON	1	EAST FORK SPIKE/0700	EAST FORK SPIKE/2000
E-229 TIMBER SOLUTIONS FORW		09/20	PAUL LOVAAS	1	EAST FORK SPIKE/0700	EAST FORK SPIKE/2000
E-253 TIMBER TRAIL EXCA		09/19	MIKE THORSON	1	EAST FORK SPIKE/0700	EAST FORK SPIKE/2000
E-62 FLANAGAN FORWARDER		09/22	EARL FLANAGAN	1	EAST FORK SPIKE/0700	EAST FORK SPIKE/2000
E-129 FLANAGAN FELLER BUNCHER		09/19	DALE FLANAGAN	1	EAST FORK SPIKE/0700	EAST FORK SPIKE/2000
8. Division/Group Communication Summary						
Function	Channel	RX Frequency N/W	RX Tone/NAC	TX Frequency N/W	TX Tone/NAC	Mode
COMMAND	9	168.5750N	114.8	173.6750N	114.8	A
TACTICAL	3	168.6000N	114.8	168.6000N	114.8	A
AIR TO GROUND	14	169.2000N		169.2000N		A
AIR TO GROUND	15	164.7500N		164.7500N		A
AIR GUARD	16	168.6250N		168.6250N	110.9	A
9. Prepared By (Resource Unit Leader)			Approved By (Planning Section Chief)		Date	Time
RICH AUBUCHON - RESL			TERRY PIERCE - PSC1 <i>T. Pierce</i>		09/11/2017	0753


Division/Group Assignment List (ICS 204 WF)

1. Incident Name:			3.			
MEYERS SAPPHIRE COMPLEX			Branch:		Division/Group:	
2. Operational Period: 0700 - 2000			III		I	
Date/Time From: 09/12/2017 0700 TUE		Date/Time To: 09/12/2017 2000 TUE				
4. Operations Personnel						
OPERATIONS CHIEF		PETER MYERS DAVID WALKER		DIVISION/GROUP SUPERVISOR		JEREMY BRAND JON RUPP (T)
PLANNING OPS		JAMIE SCHWARTZ JEREMY BRAND (T)		AIR OPERATIONS DIRECTOR		LYNNE HOWARD BART KICKLIGHTER (T)
5. Resources Assigned this Period						
Strike Team / Task Force / Resource Designator		LWD	Leader	Number Persons	Drop Off PT./Time	Pick Up PT./Time
O-321 EMTF		09/12	CHRIS NOON	1	EAST FORK SPIKE/0700	EAST FORK SPIKE/2000
O-537 EMTB		09/15	OLENA GARTNER	1	EAST FORK SPIKE/0700	EAST FORK SPIKE/2000
6. Control Operations/Work Assignments:						
Task: In Billy Springer Memorial and Bonanza Subdivisions, continue structure protection measures. Finish and improve hand and mechanical line around subdivisions and threatened structures.						
Purpose: To secure structures and private property in the Bill Springer Memorial and Bonanza Subdivisions.						
End State: To protect values at risk and minimize impacts/threats in the Billy Springer Memorial and Bonanza Subdivisions.						
7. Special Instructions:						
Refer to the 220 for aerial water use practices to prevent the spread of aquatic invasives.						
Identify IA resources within division.						
8. Division/Group Communication Summary						
Function	Channel	RX Frequency N/W	RX Tone/NAC	TX Frequency N/W	TX Tone/NAC	Mode
COMMAND	9	168.5750N	114.8	173.6750N	114.8	A
TACTICAL	3	168.6000N	114.8	168.6000N	114.8	A
AIR TO GROUND	14	169.2000N		169.2000N		A
AIR TO GROUND	15	164.7500N		164.7500N		A
AIR GUARD	16	168.6250N		168.6250N	110.9	A
9. Prepared By (Resource Unit Leader)			Approved By (Planning Section Chief)		Date	Time
RICH AUBUCHON - RESL			TERRY PIERCE - PSC1 <i>T. Pierce</i>		09/11/2017	0753


Division/Group Assignment List (ICS 204 WF)

1. Incident Name:			3.			
MEYERS SAPPHIRE COMPLEX			Branch:		Division/Group:	
2. Operational Period: 0700 - 2000			III		K	
Date/Time From: 09/12/2017 0700 TUE	Date/Time To: 09/12/2017 2000 TUE					
4. Operations Personnel						
OPERATIONS CHIEF	PETER MYERS DAVID WALKER		DIVISION/GROUP SUPERVISOR		SHANE STURGILL	
PLANNING OPS	JAMIE SCHWARTZ JEREMY BRAND (T)		AIR OPERATIONS DIRECTOR		LYNNE HOWARD, BART KICKLIGHTER (T)	
SAFETY OFFICER	MIKE COOK					
5. Resources Assigned this Period						
Strike Team / Task Force / Resource Designator	LWD	Leader	Number Persons	Drop Off PT./Time	Pick Up PT./Time	
O-696 TFLD	09/23	ROBERT VICK	1	MEYERS ICP/0700	MEYERS ICP/2000	
E-305 NORTHWEST FIRE 0710 ENG6	09/14	MARCUS JANES	3	MEYERS ICP/0700	MEYERS ICP/2000	
E-86 AEGIS ENG6	09/14	ROY VARNEY	3	MEYERS ICP/0700	MEYERS ICP/2000	
E-306 GREEN VALLEY 150 ENG6	09/14	MICHAEL CARRAFA	3	MEYERS ICP/0700	MEYERS ICP/2000	
E-143 MORANVILLE WTT2	09/23	CARY TAYLOR	1	MEYERS ICP/0700	MEYERS ICP/2000	
E-287 CASTLE MOUNTAIN ENG3	09/20	RHODINA TSOSIE	3	MEYERS ICP/0700	MEYERS ICP/2000	
E-307 CENTRAL AZ FIRE 548 ENG6	09/14	MATHEW MAYHALL	3	MEYERS ICP/0700	MEYERS ICP/2000	
O-246 MILLER CREEK MODULE 3 FAL1	09/24	PETE CLIFFORD	2	MEYERS ICP/0700	MEYERS ICP/2000	
O-563 EMPF	09/14	MELANIE R MILLER	1	MEYERS ICP/0700	MEYERS ICP/2000	
O-592.5 SOF1	09/12	MIKE COOK	1	MEYERS ICP/0700	MEYERS ICP/2000	
6. Control Operations/Work Assignments:						
Task: Continue to evaluate potential opportunities, for point protection, conduct burnout operations where feasible.						
Purpose: To secure structures and private property in the Frog Pond Basin.						
End State: Protect values at risk and minimize impacts and threats to Frog Pond Basin while minimizing exposure and impacts to critical values at risk.						
7. Special Instructions:						
8. Division/Group Communication Summary						
Function	Channel	RX Frequency N/W	RX Tone/NAC	TX Frequency N/W	TX Tone/NAC	Mode
COMMAND	9	168.5750N	114.8	173.6750N	114.8	A
TACTICAL	2	168.2000N	114.8	168.2000N	114.8	A
AIR TO GROUND	14	169.2000N		169.2000N		A
AIR TO GROUND	15	164.7500N		164.7500N		A
AIR GUARD	16	168.6250N		168.6250N	110.9	A
9. Prepared By (Resource Unit Leader)		Approved By (Planning Section Chief)		Date	Time	
RICH AUBUCHON - RESL		TERRY PIERCE - PSC1 <i>J. Pierce</i>		09/11/2017	0753	

Division/Group Assignment List (ICS 204 WF)

1. Incident Name:			3.			
MEYERS SAPPHIRE COMPLEX			Branch:		Division/Group:	
2. Operational Period: 0700 - 2000			III		R/T	
Date/Time From: 09/12/2017 0700 TUE		Date/Time To: 09/12/2017 2000 TUE				
4. Operations Personnel						
OPERATIONS CHIEF		PETER MYERS, DAVID WALKER		DIVISION/GROUP SUPERVISOR		
PLANNING OPS		JAMIE SCHWARTZ, JEREMY BRAND (T)		AIR OPERATIONS DIRECTOR		
				BRIAN BROWNING JACOB JERESEK (T)		
				LYNN HOWARD BART KICKLIGHTER (T)		
5. Resources Assigned this Period						
Strike Team / Task Force / Resource Designator		LWD	Leader	Number Persons	Drop Off PT./Time	Pick Up PT./Time
C-56 BITTERROOT IHC		09/15	MATTHEW MICHALISZYN	21	MEYER ICP/0700	MEYER ICP/2000
B-D T2IA		09/19	QUIGLEY/DICKINSON (T)	20	MEYER ICP/0700	MEYER ICP/2000
E-63 AC LOGGING SKG3		09/21	SOULTER GANAN	1	MEYER ICP/0700	MEYER ICP/2000
E-235 CASTLE MOUNTAIN FIRE WT2		09/20	ARTIE JAMES	1	MEYER ICP/0700	MEYER ICP/2000
E-308 BERTHOUD ENG6		09/14	SHANE PRIME	3	MEYER ICP/0700	MEYER ICP/2000
E-309 WORLAND 63 ENG6		09/13	BEN GOMEZ	3	MEYER ICP/0700	MEYER ICP/2000
EMTF		09/14	CHRIS ORR	1	MEYER ICP/0700	MEYER ICP/2000
O-592.6 SOF1		09/16	LARRY CONNELL	1	MEYER ICP/0700	MEYER ICP/2000
6. Control Operations/Work Assignments:						
Task: Patrol for spot fires and slop overs; mop up 100%. Mop up perimeter of burnout 30-300 feet, where safe to do so, to secure the fire line. Monitor spot fire in Senate Creek.						
Purpose: Minimize acres burned in DIV R/T.						
End State: Execute full suppression fire management strategies using indirect protection tactics to guide fire into man-made or natural barriers, while minimizing firefighter exposure and impacts to critical values at risk.						
7. Special Instructions:						
Refer to the 220 for aerial water use practices to prevent the spread of aquatic invasives.						
Identify IA resources within division.						
8. Division/Group Communication Summary						
Function	Channel	RX Frequency N/W	RX Tone/NAC	TX Frequency N/W	TX Tone/NAC	Mode
COMMAND	7	168.0750N	114.8	170.4250N	114.8	A
TACTICAL	4	166.7250N	114.8	166.7250N	114.8	A
AIR TO GROUND	14	169.2000N		169.2000N		A
AIR TO GROUND	15	164.7500N		164.7500N		A
AIR GUARD	16	168.6250N		168.6250N	110.9	A
9. Prepared By (Resource Unit Leader)			Approved By (Planning Section Chief)		Date	Time
RICH AUBUCHON - RESL			TERRY PIERCE - PSC1 		09/11/2017	0753

Division/Group Assignment List (ICS 204 WF)

1. Incident Name:			3.			
MEYERS SAPPHIRE COMPLEX			Branch:		Division/Group:	
2. Operational Period: 0700 - 2000			III		W	
Date/Time From: 09/12/2017 0700 TUE		Date/Time To: 09/12/2017 2000 TUE				
4. Operations Personnel						
OPERATIONS CHIEF		PETER MYERS DAVID WALKER		DIVISION/GROUP SUPERVISOR		
PLANNING OPS		JAMIE SCHWARTZ JEREMY BRAND (T)		AIR OPERATIONS DIRECTOR		
				KELLY CORNWALL LYNNE HOWARD BART KICKLIGHTER (T)		
5. Resources Assigned this Period						
Strike Team / Task Force / Resource Designator		LWD	Leader	Number Persons	Drop Off PT./Time	Pick Up PT./Time
E-123 ENG6		09/20	JAMES DOUGLES	2	MEYERS ICP/0700	MEYERS ICP/2000
6. Control Operations/Work Assignments:						
Task: Scout, map and acquire intel on previous preparations for contingency line. Assemble needs and time lines to complete if Management Action Points are breached						
Purpose: Minimize area boundary and impacts to resources at risk.						
End State: Execute full suppression.						
7. Special Instructions:						
Complete maintenance of equipment as appropriate and maintain readiness to engage as directed by operations.						
8. Division/Group Communication Summary						
Function	Channel	RX Frequency N/W	RX Tone/NAC	TX Frequency N/W	TX Tone/NAC	Mode
COMMAND	7	168.0750N	114.8	170.4250N	114.8	A
TACTICAL	5	166.7750N	114.8	166.7750N	114.8	A
AIR TO GROUND	14	169.2000N		169.2000N		A
AIR TO GROUND	15	164.7500N		164.7500N		A
AIR GUARD	16	168.6250N		168.6250N	110.9	A
9. Prepared By (Resource Unit Leader)			Approved By (Planning Section Chief)		Date	Time
RICH AUBUCHON - RESL			TERRY PIERCE - PSC1 		09/11/2017	0753

INCIDENT RADIO COMMUNICATIONS PLAN (ICS 205)

1. Incident Name:		2. Date/Time Prepared:		3. Operational Period:	
MEYERS SAPPHIRE COMPLEX		Date: 09/11/2017 Time: 0753		Date/Time From: 09/12/2017 0700 Date/Time To: 09/12/2017 2000	
				TUE TUE	

4. Basic Radio Channel Use:										
Zone Group	Ch #	Function	Channel Name/Trunked Radio System Talkgroup	Assignment	RX Freq	RX Tone/NAC	TX Freq	TX Tone/NAC	Mode (A,D, or M)	Remarks
MEYERS	1	TACTICAL	TAC 1	DIV A/E	168.0500N	114.8	168.0500N	114.8	A	
MEYERS	2	TACTICAL	TAC 2	DIV K	168.2000N	114.8	168.2000N	114.8	A	
MEYERS	3	TACTICAL	TAC 3	DIV I	168.6000N	114.8	168.6000N	114.8	A	
MEYERS	4	TACTICAL	TAC 4	DIV R/T	166.7250N	114.8	166.7250N	114.8	A	
MEYERS	5	TACTICAL	TAC 5	DIV W	166.7750N	114.8	166.7750N	114.8	A	
MEYERS	6	TACTICAL	TAC 6		168.2500N	114.8	168.2500N	114.8	A	
MEYERS	7	COMMAND	CMD 3	N. OF THE FIRE	168.0750N	114.8	170.4250N	114.8	A	FIRELINE TO ICP - EMERINE MT.
MEYERS	8	COMMAND	CMD 4	W. OF THE FIRE	170.4125N	114.8	165.9625N	114.8	A	FIRELINE TO ICP - BARE HILL
MEYERS	9	COMMAND	CMD 5	S. OF THE FIRE	168.5750N	114.8	173.6750N	114.8	A	FIRELINE TO ICP - SENATE MT.
MEYERS	10	COMMAND	CMD 6	SE OF THE FIRE	173.0375N	114.8	167.3250N	114.8	A	FIRELINE TO ICP - TINY MT.
MEYERS	11	COMMAND	B-D / EMERINE	B-D FOREST NET	171.0000N		170.3500N	146.2	A	B-D FOREST NET BACKUP - EMERINE
MEYERS	12	TACTICAL	TAN	EMS	155.3400N		155.3400N	156.7	A	AIR AMBULANCE
MEYERS	13	TACTICAL	WHITE	EMS	155.2800N		155.2800N	156.7	A	GROUND AMBULANCE
MEYERS	14	AIR TO GROUND	A/G PRIMARY	ALL DIVISIONS	169.2000N		169.2000N		A	AIR TO GROUND PRIMARY
MEYERS	15	AIR TO GROUND	A/G SECONDARY	ALL DIVISIONS	164.7500N		164.7500N		A	AIR TO GROUND SECONDARY
MEYERS	16	AIR GUARD	AIRGUARD	ALL DIVISIONS	168.6250N		168.6250N	110.9	A	AIR EMERGENCY ONLY

5. Special Instructions:	

6. Prepared By	(Communications Unit Leader)	Name: JERRY W. PATRICK
ICS 205	IAP Page	Signature: _____ Date/Time: 09/11/2017 0753

INCIDENT RADIO COMMUNICATIONS PLAN (ICS 205)

1. Incident Name:		2. Date/Time Prepared:		3. Operational Period:						
MEYERS SAPPHIRE COMPLEX		Date: 09/11/2017 Time: 0753		0700 - 2000						
		Date/Time From: 09/12/2017 0700		Date/Time To: 09/12/2017 2000						
		TUE		TUE						
4. Basic Radio Channel Use:										
Zone Group	Ch #	Function	Channel Name/Trunked Radio System Talkgroup	Assignment	RX Freq	RX Tone/NAC	TX Freq	TX Tone/NAC	Mode (A, D, or M)	Remarks
SAPPHIRE	1	TACTICAL	TAC 1	DIV G	168.0500N	123.0	168.0500N	123.0	A	BRANCH I
SAPPHIRE	2	TACTICAL	TAC 2	DIV Z AND NIGHT	168.2000N	123.0	168.2000N	123.0	A	LITTLE HOGBACK - BRANCH II
SAPPHIRE	3	TACTICAL	TAC 3	DIV N/O/P	168.6000N	123.0	168.6000N	123.0	A	LITTLE HOGBACK - BRANCH II
SAPPHIRE	4	TACTICAL	TAC 4	STAGING	168.7250N	123.0	168.7250N	123.0	A	LITTLE HOGBACK - BRANCH II
SAPPHIRE	5	TACTICAL	TAC 5	STRUCTURE	166.7750N	123.0	166.7750N	123.0	A	LITTLE HOGBACK - BRANCH II
SAPPHIRE	6	TACTICAL	TAC 6		168.2500N	123.0	168.2500N	123.0	A	
SAPPHIRE	7	COMMAND	CMD 7	ALL DIVISIONS	168.1000N	123.0	170.4500N	123.0	A	CMD RPT FOR GOAT CREEK AND SLIDE ROCK FIRES - WEST
SAPPHIRE	8	COMMAND	CMD 8	ALL DIVISIONS	169.5375N	123.0	164.7125N	123.0	A	CMD RPT FOR LITTLE HOGBACK FIRE - WEST
SAPPHIRE	9	COMMAND	CMD 9	ALL DIVISIONS	166.3375N	123.0	170.3875N	123.0	A	CMD RPT FOR LITTLE HOGBACK FIRE - EAST
SAPPHIRE	10	COMMAND	CMD 10	ALL DIVISIONS	164.8750N	123.0	169.8125N	123.0	A	CMD RPT FOR GOAT CREEK AND SLIDE ROCK FIRES - EAST
SAPPHIRE	11	COMMAND	CMD 11	ALL DIVISIONS	171.0375N	123.0	163.8250N	123.0	A	SE END OF LITTLE HOGBACK
SAPPHIRE	12	TACTICAL	TAN	EMS	155.3400N	123.0	155.3400N	156.7	A	AIR AMBULANCE
SAPPHIRE	13	QUIGG RPT	QUIGG RPT	IA	164.7000N		164.1000N	131.8	A	LOLO FOREST RPT
SAPPHIRE	14	AIR TO GROUND	A/G 1	AIR ATTACK	169.1500N		169.1500N		A	COMMUNICATE WITH AIR ATTACK
SAPPHIRE	15	AIR TO GROUND	A/G 2	BRANCHES I AND II	169.0875N		169.0875N		A	
SAPPHIRE	16	AIR GUARD	AIRGRD	ALL DIVISIONS	168.6250N		168.6250N	110.9	A	AIR EMERGENCY OR INITIAL CONTACT
5. Special Instructions:										
6. Prepared By (Communications Unit Leader)										
Name: JERRY W. PATRICK				Signature:						
ICS 205				Date/Time: 09/11/2017 0753						

AIR OPERATIONS SUMMARY

Prepared By: Bart Kicklighter AOBD(T)

Prepared Date/Time: 9/11/2017 1800

1. INCIDENT NAME:	2. OPERATIONAL PERIOD DATE:	START TIME:	END TIME:	SUNRISE:	SUNSET:
Meyers Sapphire Complex	9/12/2017	700	2200	0707 @ Helibase	1952 @ Helibase

3. REMARKS (Safety Notes, Hazards): Secondary A/A used as assigned by Air Attack. Secondary A/G used as needed. HOTSY BUCKET WASHOUT: (1) Beaverhead-Deerlodge (Meyers and Sapphire): When conducting bucket/snorkel work with Helicopters, ensure that only one water source is used at a time. If utilizing multiple water sources, ensure buckets/snorkels are washed between the use of different sources. (2) LOLO PART OF SAPHIRE: Required when switching from one drainage to another (3) No wash required when switching dips while on the Bitterroot (4) Bucket wash when switching between Lolo or B-D and Bitterroot. (5) NEVER DIP FROM CLARK FORK.

4. READY ALERT AIRCRAFT Incident Medevac Resources: (THE AS350B3 (litter-capable) 407MC Bell 407 (backboard only) Litter Kit at Meyers HB SHORTHAUL Order via A/C Desk. ** 401HQ @ Lincoln, MT ** Hoist/VVG: 429MJ Two Bear Air @ Kalispell A/C Medical (Tan): 155.3400N Tone TX 156.7 A/G Hospital (White): 155.2800

5. Airspace Information: Sapphire TFR # 7/9864 Freq: 118.2250 Radius: POLYGON Altitude: 12,000 MSL Meyers TFR: 7/5927 Freq: 121.0750 Radius: POLYGON Altitude: 11,000

6. PERSONNEL	NAME	PHONE #	7. FREQUENCIES	VHF-AM	VHF-FM
--------------	------	---------	----------------	--------	--------

6a. Sapphire Meyers Complex					
Air Ops Branch Director	Lynne Howard	678-699-3266	Sapphire A/G PRIMARY A/G 1		169.1500N
Air Ops Branch Director (Trainee)	Bart Kicklighter	828-460-6559	Sapphire A/G SECOND A/G 2		169.08750N
Air Support Group Supervisor	Teresa Williamson	720-537-4972	Sapphire A/A FW		118.2250
Air Tactical Group Supervisor	Larry Mars	479-857-9663	Sapphire A/A RW		123.4000
Air Ops Yurt Phone	AOBD/ASSGS	406-859-9129			

6c. Common Ops Contacts

Meyers Helibase Manager	Brad Bernardy	720-537-4928	7b. Meyers Freqs		
Meyers Helibase Manager (Trainee)	Jeanne Bradley		Meyers A/G PRIMARY (A/G 1)		169.2000
			Meyers A/G SECOND (A/G 2)		164.7500
Meyers Helibase Trailer Phone			Meyers A/A FW		121.0750
Mixmaster Miner Mud	Marty Posey	575-746-7320	Meyers A/A RW		126.6250
Missoula (Lolo NF)	A/C Desk	406-829-7060	Command - Helibase to ATGS		168.075 Rx - 170.425 Tx 114.8
Dillon (B-D NF)	A/C Desk	406-683-3975/3827	7c. Common Freqs		

8. AERIAL SUPERVISION

FAA #	REQ #	TY	MAKE/MODEL	BASE	START	AVAIL	REMARKS
							National Fit Follow
							Air Guard
							DNRC A/G (Yellow)

Signature: /s/ Lynne Howard, AOBD

NOTE: Air Tactical and Platforms TBD on Case By Case Need

7d. Initial Attack Freqs

FAA #	REQ #	TY	MAKE/ MODEL	BASE	BRIEF	AVAIL	REMARKS		
116	A-7	1	KMax	Meyers	800	830	Restricted; Quick Fill	Beaverhead Direct	171.425 RX/TX TT 131.8
17HX	A-67	2	Bell 205++	Meyers	800	830	Standard	Deerlodge Direct	171.000 RX/TX TT 141.3
111DR	A-87	2	B-205	Meyers	800	830	Restricted	B-D IA A/G #29 (pri)	132.7000
7HE	A-14	3	AS-350B3	H-31	800	830	Standard; filter-capable	B-D IA A/G #52 (sec)	166.9000 N
407MC	A-69	3	Bell 407	Meyers	800	830	Standard; backboard only	B-D IA A/G #53 (alt)	168.3875 N
3521A	A-37	3	AS-350B3	Meyers	800	830	Standard	Lolo East Direct	168.6500N 110.9 Rx/Tx
								Lolo East A/G	166.5000N
								Lolo West Direct	164.9125N 123.0 Tx
								Lolo West A/G (A/G 05)	166.7500N
								Bitterroot Forest A/G	Rx 168.3875 Tx 168.3875
								Bitterroot A/A	125.175

9. FIXED WING

TBD	A-			Butte				ATGS Platform	
-----	----	--	--	-------	--	--	--	---------------	--

NOTE: Italicized Aircraft/Req are on Meyers Order; Others are Sapphire

								Bitterroot Dispatch Ch 1	Rx 168.750 Tx 168.750 Tn 131.8
								Bitterroot Dispatch Ch 2	Rx 169.625 Tx 169.625 Tn 146.2

10. MISSIONS - MEYERS

Type	TIME	From	To
Bucket drops as requested	TBD	Meyers Hellbase	Fire
Recon as requested	TBD	Meyers Hellbase	Fire
Aerial Ignition possible	TBD	Meyers Hellbase	Fire
	TBD	Meyers Hellbase	Fire

10. MISSIONS - SAPPHIRE

Type	TIME	From	To
Bucket Support as requested in DIVS Z to hold/check firing operation	TBD	Meyers Hellbase	Fire
ATGS to monitor Sliderock and support Sapphire as requested	TBD	Meyers Hellbase	Fire
Recon as requested	TBD	Meyers Hellbase	Fire
Aerial Ignition as requested	TBD	Meyers Hellbase	Fire

Signature: /s/ Lyne Howard, AOBD

Meyers ICP Fire Phone List
Southern Area Incident Management Team
Mike Dueitt - Incident Commander

POSITION	INCIDENT PHONE
Incident Commander	(406) 859-9101
Liaison Officer	(406) 859-9102
Safety Officer	(406) 859-9129
Public Information Officer	(406) 859-9107
Operations Section Chief	(406) 859-9129
Air Operations Branch Director	(406) 859-9129
Meyers Helibase	(406) 859-9133
Planning Section Chief	(406) 859-9106
Human Resource Specialist	(503) 307 8820
Logistics Section Chief	(406) 859-9103
Communications	(406) 859-9099
Facilities Unit Leader	(406) 859-9130
Ground Support	(406) 859-9097
Ground Support	(406) 859-9098
Medical Unit Leader	(406) 859-9100
Finance Section Chief	(406) 859-9092
Ordering Manager	(406) 859-9090
Ordering	(406) 859-9091
Resource Unit Leader	(406) 859-9129
Demob Unit Leader	(406) 859-9106
Security	(406) 859-9130
Plans FAX	(406) 859-9105



HEALTH AND SAFETY MESSAGE

“We don’t plan on luck to be safe, we plan on good risk management and good decisions”....the Red Team

INCIDENT: Meyers-Sapphire Complex

DATE: Tuesday, September 12th, 2017

Major Hazards and Risks: Mission Creep, Three C’s, Situational Awareness, Cold Weather

Mission Creep: If you are questioning what you are doing, Maybe you shouldn’t do it at all. *Don’t hesitate to ask the tough questions* and view the big picture.

Three C’s: *Communication, Coordination, and Cohesion.* To accomplish all goals and objectives for any operation, these three are extremely important. Make sure you have *clear and concise communication*, and that it *is understood by all resources* before engaging in activities.

Situational Awareness: If your assignment does not have purpose and meaning and does not support *meeting the objectives* you should *re-assess the assignment*.

Cold Weather: With cold temperatures over the past few mornings and predicted weather later this week, now is the time to *make preparations* for you personal sleeping areas and gear. Keep your sleeping area and clothing dry at all times. *Multiple layers of clothing* will provide the most warmth and can be easily removed as temperatures rise.



Someone is injured on the job every twenty seconds... His name is Doug.

“Don’t Be Like Doug”

Common Tactical Hazards

- *Poor communications due to rapidly emerging fire or an isolated area of a large fire.
- *Suppression resources are fatigued or inadequate.
- *Assignment or escape route depends on aircraft support.
- *Unexpected weather changes

USE L.C.E.S

Red Team Safety Officers: Tony Rivers (T), Mike Cook, Larry Connell, Brad Lidell

INCIDENT SAFETY ANALYSIS 215a

Meyers-Sapphire Complex - Tuesday, September 12, 2017

8. Location	9. Hazard	6. Control or Abatement Action (Engineering, Administrative, PPE, Avoidance, Education, etc)
Contingency, IA	Power Utilities	<ul style="list-style-type: none"> ~ Notify all personnel of down electrical lines. ~ Refer to the IRPG page 24 for Power Line Safety. ~ Always treat downed wires as energized. ~ Identify and avoid high tension transmission lines. ~ In high winds or areas of dense smoke, avoid areas under power lines. ~ Be aware of utility restoration in your work area.
ALL	Air Operations	<ul style="list-style-type: none"> ~ Follow "Aviation Watch-Out Situations" on page 44, IRPG. ~ Don't plan on air resources for medical transport or resupply. ~ Ensure positive communication with all air resources. ~ Ensure communications are established with operators. ~ During airtanker operations clear the drop zone before approach of the lead plane.
R,T,W,N,O	Structure Protection & HAZMAT	<ul style="list-style-type: none"> ~ Review "Wildland Urban Interface" Watch outs, IRPG page 12. ~ Use "Structure Assessment" checklist, IRPG pages 13-15. ~ Follow "HAZMAT Incident Operations" on pages 34-36 in IRPG. ~ Identify and avoid damaged gas service near structures.
ALL	Extreme Fire Behavior	<ul style="list-style-type: none"> ~ Share weather observations with all personnel assigned to division. ~ Establish LCES ~ Establish "Trigger Points" to withdraw. ~ Use "Risk Management" process prior to engaging in suppression actions, refer to page 1, IRPG.
ALL	Fireline Hazards	<ul style="list-style-type: none"> ~ Establish and continue to validate LCES. ~ Avoid radiant heat by wearing appropriate PPE correctly. ~ Use correct tool for task assigned. ~ Follow power line safety protocol as outlined on page 22 in IRPG. ~ Flag and isolate all HAZMAT and alert all personnel working in Division. ~ Follow WUI recommendations on pages 10-11 in IRPG.
ALL	Helicopter Operations	<ul style="list-style-type: none"> ~ Helicopter operations should be used for priority missions. ~ Stay clear of all bucket drops when suppression actions are in place and allow 1 minute prior to re-entry. ~ Pilots or air supervisor ensure ground resources are clear before bucket drops. ~ Monitor A-G communications. ~ Follow aviation safety guidelines in IRPG and IHOG. ~ Ground resources advise pilot of local power lines and local visibility issues.
ALL	Hazard Trees	<ul style="list-style-type: none"> ~ Follow "Hazard Tree Safety" guidelines, IRPG page 22. ~ Post lookouts, or use a spotter in mop-up areas with personnel. ~ Don't park vehicles or take breaks in high concentrations of hazard trees. ~ Establish trigger points for disengagement during high wind events. ~ Remember that the hazard zone extends a minimum of 2 1/2 tree heights.
A,E,K,I	Chain Saw Operations	<ul style="list-style-type: none"> ~ Follow "Hazard Tree Safety" guidelines, IRPG page 22 ~ Look up, Look down, Look around for hazard tree indicators. ~ Only fell and buck trees within your expertise, and training. ~ Follow "Procedural Felling Operations" on page 79 in IRPG. ~ Do not fall trees during high wind events. ~ Ensure proper use of all required PPE.
Initial Attack	Downhill Line Construction	<ul style="list-style-type: none"> ~ Minimize downhill line locations. ~ Post lookouts (IRPG pg. 7) ~ Follow downhill line construction guidelines (IRPG pg. 9)

INCIDENT SAFETY ANALYSIS 215a

ALL	Steep Terrain & Rolling Debris	<ul style="list-style-type: none"> ~ Plan for medical emergencies and extreme fire behavior / escape routes over steep terrain and limited access. ~ Maintain 8'-10' spacing when working & walking. ~ Don't work above or below any personnel or heavy equipment. ~ Be on the lookout for rolling rocks, debris, or burning material. ~ Evaluate necessity to send personnel in areas with limited access. ~ Post lookouts (IRPG pg 7), identify safety zones and suitable escape routes, provide good communications.
ALL	Injury & Medical Emergency	<ul style="list-style-type: none"> ~ Assist injured employee and provide appropriate medical care. ~ Use EMT's on Division for initial care. ~ Follow medical protocol as outlined in ICS-206 & IRPG Pgs 99-108
A,R	Firing Operations & Devices	<ul style="list-style-type: none"> ~ Only personnel trained in the use of each device will be authorized to use firing equipment. ~ Ensure all personnel are aware of firing operation that may affect them. ~ Wear appropriate PPE. ~ Ensure aerial/ground ignition plans have been adequately developed and personnel are briefed.
ALL	Communications	<ul style="list-style-type: none"> ~ Maintain communication with aviation resources, and suppression organization. ~ Ensure all know frequency and protocol for contacting resources. ~ Use clear terminology, ask questions and ensure good understanding, especially with new resources. ~ Utilize the ICS 205. ~ Utilize human repeaters when working in dead spots. ~ Know who you will contact in case of an emergency and practice the IWI protocol and 9 Line
ALL	Heavy Equipment Operations	<ul style="list-style-type: none"> ~ Ensure communications are established with operators. ~ Use hand signals if other communications are unavailable. ~ Maintain a 50'-100' exclusion area around equipment and increase it to 1 1/2 times tree height when in timber. ~ Use a spotter when backing.
ALL	Night Operations	<ul style="list-style-type: none"> ~ Maintain high visibility in work area and wear vest while in roadway. ~ Use glow sticks to mark hazards. ~ Ensure personnel have a personal light (headlamp) and red strobe to ensure visibility. ~ Watch for signs of fatigue. ~ Take breaks away from areas of known hazard.
ALL	Bears and Wolves	<ul style="list-style-type: none"> ~No food in tents. Pick up trash in ICP and on the line. Don't travel alone when possible. Make noise when traveling through remote areas alone.
ALL	Smoke Exposure	<ul style="list-style-type: none"> ~Use warning lights and provide traffic control on roads as necessary. Rotate crews in and out of smoky areas to limit exposure when possible.
ALL & ICPs	Driving & Traffic	<ul style="list-style-type: none"> ~ Practice "Defensive Driving" techniques traveling on all roads and city streets. ~ Use spotters when backing. ~ Honk horn to alert personnel when backing. ~ Keep clutter off dash and inside cab. ~ Follow Driving LCES (Lights, Chock blocks, Emergency brake, Seat belts. ~ Always use headlights. ~ Yield to pedestrians and bicycles. ~ Observe posted speed limits. ~ Use the 3 second rule for following distance when driving. ~ Use chock blocks, turn wheels into hill. ~ Avoid distractions (eating, cell phones, radio). ~ Ensure that windshields are kept clean of dust and bugs. ~Use caution when traveling on roads that are impacted by smoke or dusty conditions. ~When feasible, coordinate travel to and from the hotels to ensure two or more personnel travel together to mitigate long distances.

INCIDENT SAFETY ANALYSIS 215a

DIVS I	Chipping	<ul style="list-style-type: none"> ~Make sure all personnel operating the equipment are qualified. ~Do not wear clothing which may become entangled with material being fed into chipper. ~Never reach into the infeed shroud. ~Do not use your hands or feet to push material into feeder. ~Wear the proper PPE when operating the chipper at all time.
ALL	Unplanned Public Interaction	<ul style="list-style-type: none"> ~ Be alert to non-fire personnel in areas with suppression personnel. ~ All non-fire personnel will be escorted while on fireline. ~ Post lookouts to in areas with public to avoid conflicts with mission tasks. ~ Ensure sufficient security to restrict access to exclusion area. ~PIOs should travel in pairs whenever possible or have a driver with them.
ALL	Fatigue & Over Exertion	<ul style="list-style-type: none"> ~ Drink 1 quart of water each hour during and after work. ~ Rotate crews out of smoky areas. ~ Set a reasonable work pace and allow adequate rest breaks while on the project. ~ Use buddy system to monitor personnel of heat related and fatigue issues. ~ Follow work / rest guidelines. Mitigate before next shift.
ALL	Fatigue & Over Exertion	<ul style="list-style-type: none"> ~Ensure adequate rest (7-8 hrs of sound sleep). Stay Hydrated. Eat well balanced diet. Pay attention to minor body aches. Wash hands frequently. Monitor yourself and others for fatigue.
A,E,R,T,W	Mine Shafts	<ul style="list-style-type: none"> ~Avoid stepping on any man made rock or brush piles. Flag when located. Do not enter any mine shafts.
All	Cold Weather	<ul style="list-style-type: none"> ~ Carry extra clothing to prevent hypothermia following shift. ~ Dry out gear each night for next day. ~ Watch footing on frozen ground. ~ Maintain personal hydration. ~ Monitor wind-chill and establish trigger points for disengagement.

MEDICAL PLAN (ICS 206 WF)

1. Incident/Project Name		2. Operational Period					
Meyers Sapphire Complex		Date/Time 9/12/2017 operational period					
3. Ambulance Services							
Name	Availability	Contact		Advanced Life Support (ALS) Yes No			
A-1 Ambulance Branch 1	Incident dedicated	Command channel		X			
Three Rivers Ambulance Branch 2	Incident dedicated	Command channel		X			
Granite, Ravalli and Deer Lodge County		911			X		
4. Air Ambulance Services							
Name	Phone	Type of Aircraft & Capability					
Air Idaho Rescue (West Yellowstone)	1-208-529-6340	Night Vision, ALS flight service, Tan. Ch 12					
Life Flight (Missoula and Butte)	911	Night vision, ALS transport, Frequency Tan. Ch 12					
Two Bear Air	911	Night vision, FLIR, hoist, can transport to ground unit or private aeromed unit. Frequency Tan. Ch 12					
5. Hospitals							
Name Complete Address	GPS Datum – WGS 84 Coordinate Standard Degrees Decimal Minutes DD° MM.MMM' N - Lat DD° MM.MMM' W - Long		Travel Time (from ICP)		Phone	Helipad Yes No	Level of Care Facility
	Lat:		Air	Ground			
St. Patrick's Hospital 500 W Broadway Missoula, MT	Lat: N 46° 52.551' Long: W 113° 59.986'		30 min	120 min	406-329-5635, Emergency Rm	Yes	Level 2 Trauma
Community Hospital of Anaconda 401 W Pennsylvania Anaconda, MT	Lat: N 46° 07.969' Long: W 112° 57.456'		15 mins	45 mins	406-563-8585 ER Emergency Rm	Yes roof & ground	Level 4 community trauma hospital
Granite County Medical Center 310 Sansome ST Philipsburg, Mt	Lat: N 46° 19.811' Long: W 113° 17.653'		15 min	30 min	406-859-3271	Yes	community hospital, no trauma designation
Marcus Daly Hospital 1200 Westwood dr Hamilton MT	Lat: N 46° 14.898' Long: W 114° 10.32'			To India Spike 1.0 hrs	406-363-2211	Yes	Level 4 trauma
Special Notes							
The Medical unit will be open from 0530 – 2200. After hours, security can contact the incident ambulance and the MEDL in case of an emergency in camp or on the line.							
6. Division/Branch		Area Location Capability					
Division A/E Branch 3		EMS Responders & Capability:		A-1 Ambulance (ALS,BLS)			
		Equipment Available on Scene:		spine board, kit, oxygen			
		Medical Emergency Channel:		Command Channel			
		ETA for Ambulance to Scene:		5-10 min. *Stationed at Copper Creek CG*			
		Air/Ground:		A/G Primary 169.2000			
		Approved Helispots:		H8 , near DP 19			
		Lat:		N 45 59.963'			
		Long:		W113 31.708'			

MEDICAL PLAN (ICS 206 WF)


Branch 3 Division R/T/W	EMS Responders & Capability:	Chris Orr, EMTF		
	Equipment Available on Scene:	BLS Kit, SKED, AED, BLS		
	Medical Emergency Channel:	Tac on ground/Command Channel		
	ETA for Ambulance to Scene:	45 minutes		
	Air/Ground:	A/G Primary 169.2000		
	Approved Helispots:	H-18 , near DP28		
	Lat:	N 46° 08.610'		
	Long:	W 113° 36.45'		
Branch 3 Division I (India)	EMS Responders & Capability:	Chris Noon, EMTF Olena Gartner, EMTF		
	Equipment Available on Scene:	BLS Kit, Spine Board, Oxygen		
	ETA for Ambulance to Scene:	1.0 hours		
	Air/Ground:	A/G primary		
	Approved Helispots:	H-31		
	Lat:	N 45° 54.340'		
	Long:	W113° 45.114'		
	Medical Emergency Channel:	Command,		
Branch 3 Division K	EMS Responders & Capability:	Melanie Miller, EMPF		
	Equipment Available on Scene:	ALS/BLS Kit, Sked, AED, O2		
	ETA for Ambulance to Scene:	45 min		
	Approved Helispot:	H- 10		
	Lat:	N46° 01.531'		
	Long:	W113° 39.998'		
Branch 1 Division G (GOAT)	Point of Contact:	Greg Titus		
	EMS Responders & Capability:	Terry Williamson, AEMF		
	Equipment Available on Scene:	BLS, Trauma kit, O2, SKED		
	ETA for Ambulance to scene:	1 hr from Missoula		
	Air from Helibase:	15 min		
	Approved Helispot:	H-4		
	Lat:	N 46° 40.553		
	Long:	W 113° 35.817		
	Medical Emergency Channel:	Command		
Branch 2 Division N	Point of Contact:	Alison Coons		
	EMS Responders & Capability:	Johanna Hyde, EMTF		
	Equipment Available on Scene:	BLS, Trauma kit, O2		
	ETA for Ambulance to Scene:	1hr from DP-49 (Three Rivers Ambulance)		
	Air from Helibase:	15 min		
	Approved Helispot:	H-14	H-15	H-16 Miner Mud
	Lat:	N46 31.110	N46 29.219	N46 26.120 N46 24.102
	Long:	W113 30.650	W113 30.981	W113 30.920 W113 30.278
Medical Emergency Channel:	Command			
Branch 2 Division O	Point of Contact:	Alison Coons		
	EMS Responders & Capability:	Johanna Hyde, EMTF		
	Equipment Available on Scene:	BLS, O2, Trauma kit, SKED		
	ETA for Ambulance to Scene:	30 min from DP-49 (Three Rivers Ambulance)		
	Air from Helibase:	15 min		
	Approved Helispot:	H-17	H-18	
	Lat:	N 46° 22.498	N 46° 21.505	
	Long:	W 113° 31.770	W 113° 32.533	
Medical Emergency Channel:	Command			

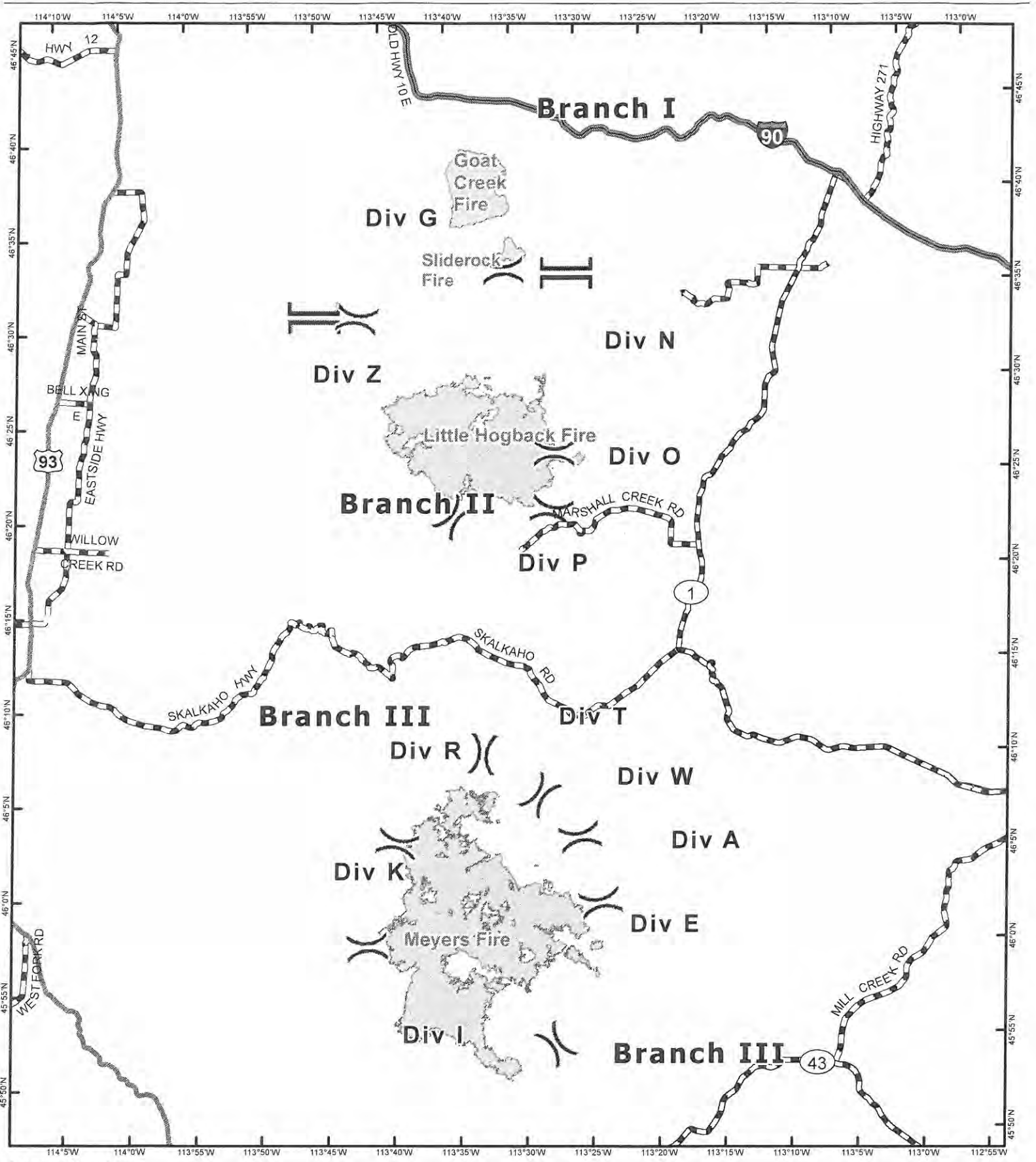
MEDICAL PLAN (ICS 206 WF)

Branch 2 Division P	Point of Contact:	Alison Coon	
	EMS Responders and Capability:	Gary Simpson, EMTF Three Rivers Ambulance (ALS, Paramedic)	
	Equipment Available on Scene:	BLS, ALS, Trauma gear, O2, AED	
	ETA for Ambulance:	30 min from DP-49 (Three Rivers)	
	Air from Helibase:	15min	
	Approved Helispot:	H-18	H-19
	Lat:	N 46° 21.505	N 46° 21.547
	Long:	W 113° 32.533	W 113° 33.252
	Medical Emergency Channel:	Command	
Branch 2 Division Z	Point of Contact:	Alison Coons	
	EMS Responders & Capability:	Rex Nielsen, EMPF	
	Equipment Available on scene:	ALS kit w/Meds, O2, SKED, AED	
	ETA for Ambulance:	30 min from ICP to DP-49 (Three Rivers)	
	Air from Helibase:	15 min	
	Approved Helispot:	H-21	
	Lat:	N 46° 24.623	
	Long:	W 113° 42.064	
	Medical Emergency Channel:	Command	
ICP	Ambulance:	Staged at DP-49 (Three Rivers)	
	EMS responders and capability	Dale Guynes, EMTB (BLS)	
	Equipment Available on Scene:	AED, medical unit supplies	
	Medical Emergency Channel:	Command Channel	
	ETA for Ambulance to Scene:	45 min	
	Approved Helispot:	Meyers Helibase	
	Lat:	N 46° 11.051'	
Long:	W 113° 29.571' elevation 6000'		




IWI IC Responsibilities:

- Take charge of the scene – inform the Division Supervisor and Communications that you are the IWI IC and establish radio communications (frequencies, channels). Identify the emergency name.
– e.g. (Division A medical, Fish Meadows medical, Highway 21 accident.)
- Assign or begin patient assessment (9 Line) and first aid. Request additional medical resources on division/branch or across incident. Transmit 9 Line patient information to Communications.
- Determine patient transportation through consultation with line medical personnel and Medical Unit Leader. Consider transportation time, risk to personnel, destination facility and available operational resources. If air transport is chosen, implement the plan for alternative transportation in the event aircraft cannot complete the mission. Order transportation resources through Communications as early as possible.
- Notify Communications as resources arrive and any patient status changes. Names of injured or deceased individuals will not be transmitted on the radio.
- Initiate documentation for future investigation; if a line safety officer is available, assign them to lead documentation. Do not move deceased individuals, gear or personal effects except to accomplish rescue work or protect the safety of others. Obtain written documentation of witnesses. The Unit Log, ICS 214, may be used for the initial documentation, but a subsequent narrative will be required.
- As appropriate, conduct an After Action Review to determine successes, areas to improve and lessons learned.

Prepared by (Medical Unit Leader)	Date/Time	1. Reviewed By (Safety Officer)	Date/Time
Fred Adler 479-238-6064	9/11/2017,	Tony Rivers SOF1 	9/11/17

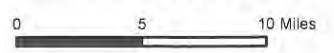


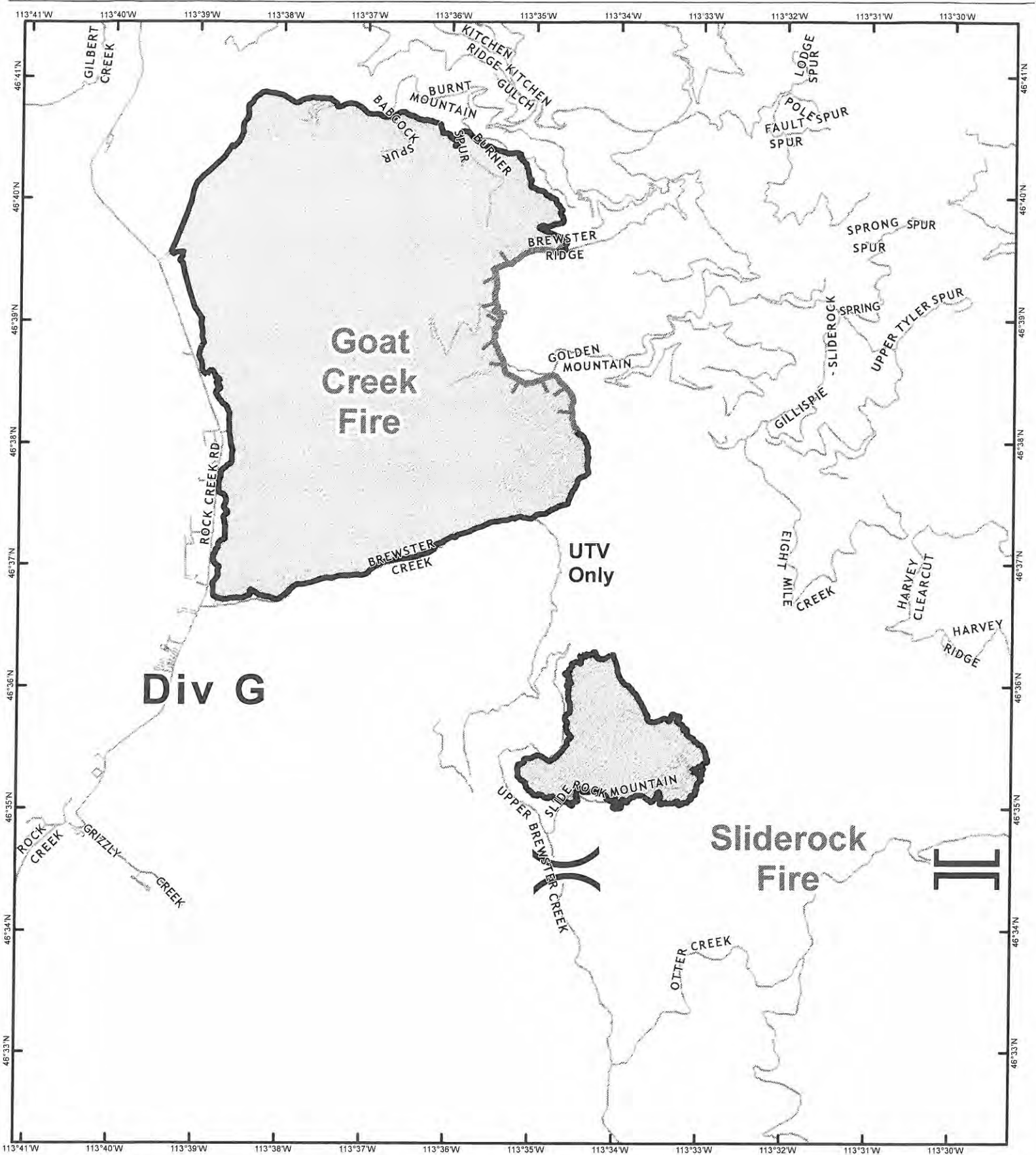
Meyers Sapphire Complex
 MT-BDF-002217
 9/12/2017
 IAP Map - Overview

-  Division Break
-  Branch Break
-  Fire Perimeter

Goat Creek: 8,300 acres
 Sliderock: 900 acres
 Little Hogback: 34,439 acres
 Meyers: 60,792 acres
 Total: 104,431 acres

Perimeter from Septmeber 11, 2017 @ 0006





**Goat
Creek
Fire**


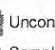
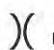
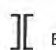
Div G

**UTV
Only**

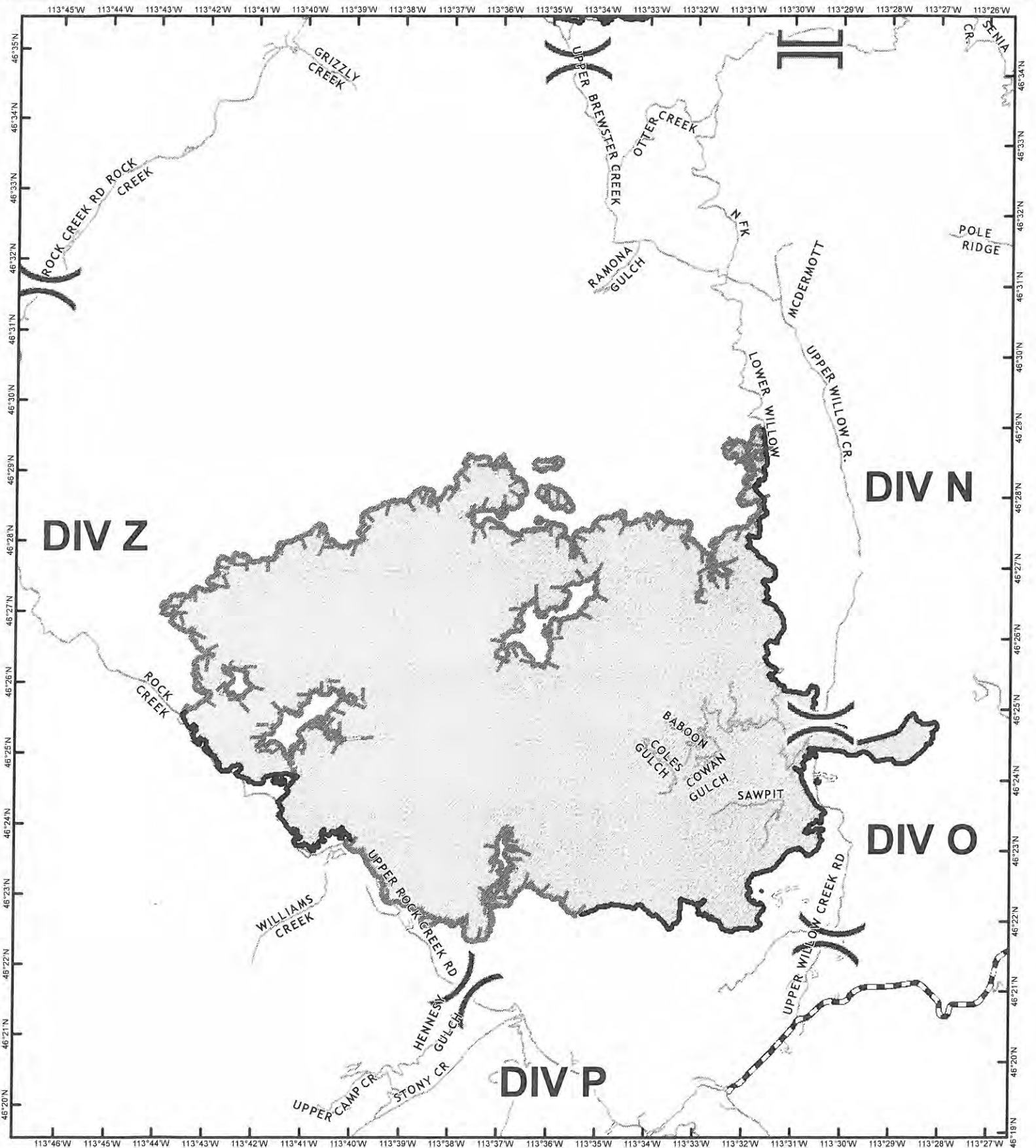
**Sliderock
Fire**

**Meyers Sapphire
Complex
MT-LNF-001463
9/12/2017**

Branch I - Goat Creek
and Sliderock Fires
Perimeter from 9/11/2017 @ 0006
Goat Creek: 8,300 acres
Sliderock: 900 acres





-  Uncontrolled Fire Edge
-  Completed Line
-  Division Break
-  Branch Break



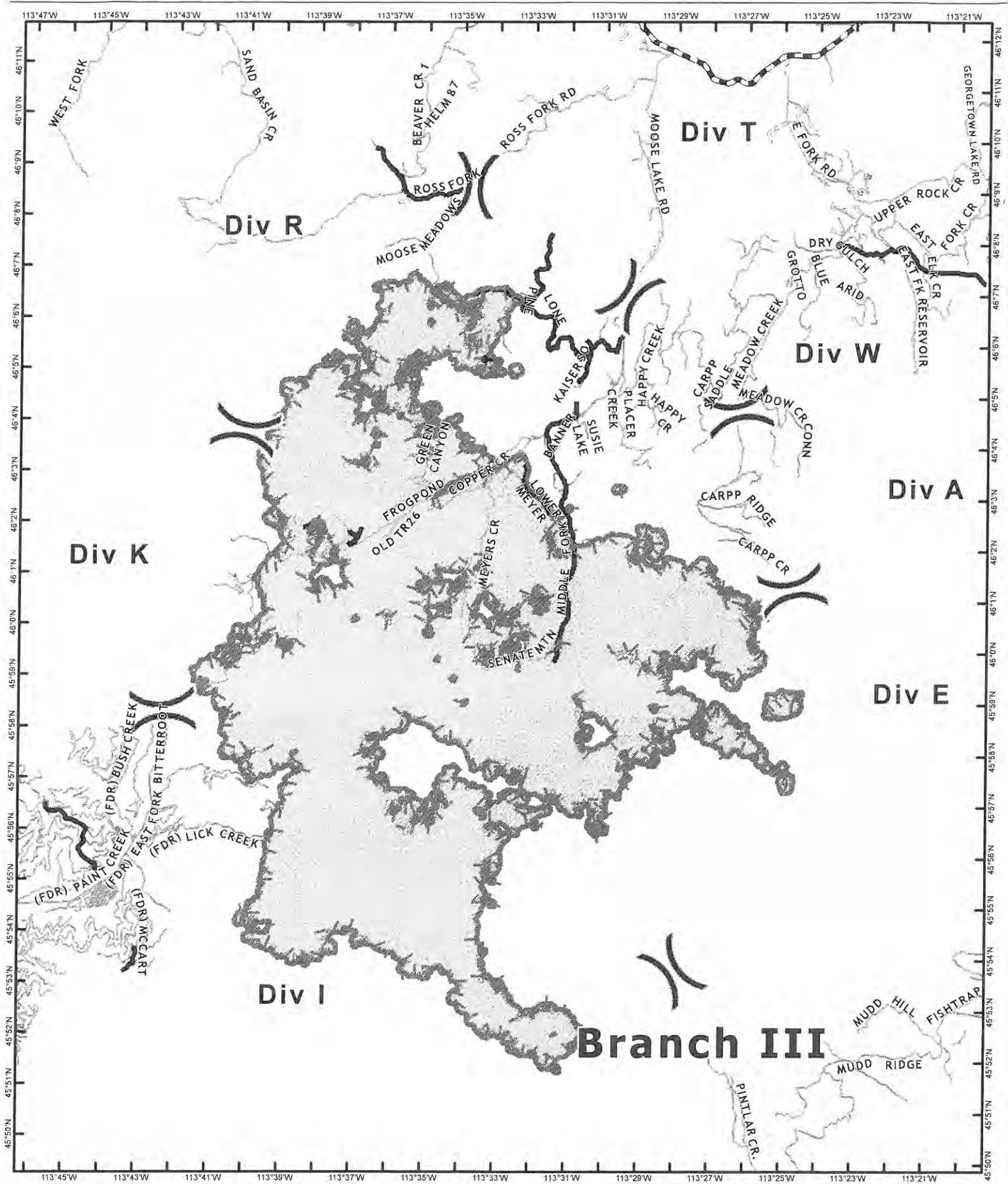


Meyers Sapphire
 Complex
 MT-LNF-001463
 9/12/2017
 Branch II
 Little Hogback Fire

Perimeter from 9/11/2017 @ 0006
 34,439 acres




-  Completed Line
-  Uncontrolled Fire Edge
-  Division Break
-  Branch Break





Meyers Sapphire
Complex
MT-BDF-002217

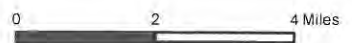
Branch III
Meyers Fire
60,792 acres

-  Division Break
-  Uncontrolled Fire Edge
-  Completed Line



9/12/2017

Perimeter from 9/11/2017 @ 0006



MEDICAL PLAN (ICS 206 WF)

Medical Incident Report

FOR ALL MEDICAL EMERGENCIES: IDENTIFY ON SCENE INCIDENT COMMANDER BY NAME AND POSITION AND ANNOUNCE "MEDICAL EMERGENCY" TO INITIATE RESPONSE FROM IMT COMMUNICATIONS/DISPATCH.

Use items one through nine to communicate situation to communications/dispatch.

1. CONTACT COMMUNICATIONS/DISPATCH

Ex: "Communications, Div. Alpha. Stand-by for Priority Medical Incident Report." (If life threatening request designated frequency be cleared for emergency traffic.)

2. INCIDENT STATUS: Provide incident summary and command structure.

Nature of Injury/Illness		<i>Describe the injury (Ex: Broken leg with bleeding)</i>
Incident Name		<i>Geographic Name + "Medical" (Ex: Trout Meadow Medical)</i>
Point of Contact		<i>Name of Point of Contact</i>
Patient Care		<i>Name of Care Provider (Ex: EMT Smith)</i>

3. INITIAL PATIENT ASSESSMENT: Complete this section for each patient. This is only a brief, initial assessment. Provide additional patient info after completing this 9 Line Report.

Number of Patients:	Male / Female	Age:	Weight:
Conscious? <input type="checkbox"/> YES <input type="checkbox"/> NO = MEDEVAC!			
Breathing? <input type="checkbox"/> YES <input type="checkbox"/> NO = MEDEVAC!			
Mechanism of Injury: <i>What caused the injury?</i>			
Lat/Long (Datum WGS84) <i>Ex: N 40° 42.45' x W 123° 03.24'</i>			

4. SEVERITY OF EMERGENCY, TRANSPORT PRIORITY

SEVERITY	TRANSPORT PRIORITY
<input type="checkbox"/> URGENT-RED Life threatening injury or illness. <i>Ex: Unconscious, difficulty breathing, bleeding severely, 2° – 3° burns more than 4 palm sizes, heat stroke, disoriented.</i>	Ambulance or MEDEVAC helicopter. Evacuation need is IMMEDIATE.
<input type="checkbox"/> PRIORITY-YELLOW Serious Injury or illness. <i>Ex: Significant trauma, not able to walk, 2° – 3° burns not more than 1-2 palm sizes.</i>	Ambulance or consider air transport if at remote location. Evacuation may be DELAYED.
<input type="checkbox"/> ROUTINE-GREEN Not a life threatening injury or illness. <i>Ex: Sprains, strains, minor heat-related illness.</i>	Non-Emergency. Evacuation considered Routine of Convenience.

5. TRANSPORT PLAN:

Air Transport: (Agency Aircraft Preferred)

<input type="checkbox"/> Helispot	<input type="checkbox"/> Short-haul/Hoist	<input type="checkbox"/> Life Flight	<input type="checkbox"/> Other
-----------------------------------	---	--------------------------------------	--------------------------------

Ground Transport:

<input type="checkbox"/> Self-Extract	<input type="checkbox"/> Carry-Out	<input type="checkbox"/> Ambulance	<input type="checkbox"/> Other
---------------------------------------	------------------------------------	------------------------------------	--------------------------------

6. ADDITIONAL RESOURCE/EQUIPMENT NEEDS:

<input type="checkbox"/> Paramedic/EMT(s)	<input type="checkbox"/> Crew(s)	<input type="checkbox"/> SKED/Backboard/C-Collar
<input type="checkbox"/> Burn Sheet(s)	<input type="checkbox"/> Oxygen	<input type="checkbox"/> Trauma Bag
<input type="checkbox"/> Medication(s)	<input type="checkbox"/> IV/Fluid(s)	<input type="checkbox"/> Cardiac Monitor/AED
<input type="checkbox"/> Other (i.e. splints, rope rescue, wheeled litter)		

7. COMMUNICATIONS:

Function	Channel Name/Number	Receive (Rx)	Tone/NAC *	Transmit (Tx)	Tone/NAC *
COMMAND					
AIR-TO-GRND					
TACTICAL					

*(NAC for digital radio system)

8. EVACUATION LOCATION:

Lat/Long (Datum WGS84) <i>EX: N 40 42.45' x W 123 03.24'</i>	
Patient's ETA to Evacuation Location:	
Helispot/Extraction Size and Hazards:	

9. CONTINGENCY:

Considerations: If primary options fail, what actions can be implemented in conjunction with primary evacuation method? Be thinking ahead...

REMEMBER: Confirm ETA's of resources ordered
Act according to your level of training
Be Alert. Keep Calm. Think Clearly. Act Decisively.