

Meyers Sapphire Complex

Incident Action Plan *Day*

Operational Period
September 13, 2017
0700 – 2000



QR for IAP



Meyers

MT-BDF-002217

USFS P1K7C417 (0102)

FWS FFF2000000K7C40

Sapphire Complex

MT-LNF-001463

USFS: P1K7XL17 (0116)

IDL: FED11417

FWS FFF2000000K7XL0

DNRC: 767012 DOI: K7XL

QR for Maps



Schedule

0700 Morning Briefing

0730 Radio Briefing –

1130 C&G

1800 Planning Meeting

1800 Night Briefing


1900 Plans Parts DUE



INCIDENT OBJECTIVES (ICS 202)

1. Incident Name:		2. Operational Period: 0700 - 2000	
MEYERS SAPPHIRE COMPLEX		Date/Time From: 09/13/2017 0700	Date/Time To: 09/13/2017 2000
		WED	WED
3. Objective(s):			
<p>1) Provide for life first of firefighters and public safety by following sound risk management protocols. Firefighter, public, and aviation safety is our priority in all fire management activities.</p> <p>2) Execute full suppression fire management strategies using direct, indirect, and/or zone protection tactics to guide fires in to man-made or natural barriers, while minimizing firefighter exposure and impacts to critical values at risk.</p> <p>Prioritize values at risk as follows: Private lands, infrastructure, grazing allotments, and natural, cultural, and heritage resources.</p> <p>Specific Values at Risk:</p> <ul style="list-style-type: none"> • Ravalli County: Martin Creek Campground, Billy Springer Memorial subdivision and Bonanza communities in the East Fork of the Bitterroot, and the proposed Meadow Vapor Timber Sale. • Granite County: Moose Lake, Frog Pond Basin, Senate Mountain, Ross Fork Area, East Fork Reservoir, and Georgetown Lake, Little Hogback, Upper Willow, and Lower Willow. • Deerlodge County: Fish Lake Area, and Pintler Face timber sale. <p>3) Provide initial attack support on the Lolo National Forest and initial attack response on Montana DNRC and Beaverhead-Deerlodge National Forest Protection within the Temporary Flight Restrictions (TFR)</p> <p>4) Coordinate suppression repair action with the assigned Resource Advisor prior to implementation.</p>			
4. Operational Period Command Emphasis:			
<p>5) Ensure timely and accurate dissemination and coordination of information regarding fire related activities is provided to the public, cooperators, elected official, and stakeholders.</p> <p>6) Contain costs by using the most cost effective method that does not jeopardize the safety of firefighters and the public.</p> <p>7) Enforce adequate standards to ensure that loss of accountable property and equipment is 6% or less.</p> <p>8) Manage the human resources assigned to the fire in a manner that promotes a positive and harassment free work environment and creates a "no tolerance" atmosphere for harassment, alcohol, or illegal drug use.</p>			
General Situational Awareness:			
See attached safety message			
5. Site Safety Plan Required? Yes <input type="checkbox"/> No <input checked="" type="checkbox"/>			
Approved Site Safety Plan(s) Located at:			
6. Incident Action Plan (the items checked below are included in this Incident Action Plan):			
<input checked="" type="checkbox"/> ICS 202	<input type="checkbox"/> ICS 207	Other Attachments:	
<input checked="" type="checkbox"/> ICS 203	<input type="checkbox"/> ICS 208	<input type="checkbox"/> _____	
<input checked="" type="checkbox"/> ICS 204	<input checked="" type="checkbox"/> ICS 220	<input type="checkbox"/> _____	
<input checked="" type="checkbox"/> ICS 205	<input checked="" type="checkbox"/> Map/Chart	<input type="checkbox"/> _____	
<input checked="" type="checkbox"/> ICS 205A	<input checked="" type="checkbox"/> Weather Forecast/Tides/Currents	<input type="checkbox"/> _____	
<input checked="" type="checkbox"/> ICS 206			
7. Prepared by: TERRY PIERCE	Position/Title: PSC1	<i>Terry Pierce</i>	Signature:
8. Approved by Incident Commander:	Name: MIKE DUEITT	<i>MARK MORACES</i>	Signature:
ICS 202	IAP Page		Date/Time: 09/12/2017 2100

ORGANIZATION ASSIGNMENT LIST (ICS 203)

1. Incident Name:		2. Operational Period: 0700 - 2000	
MEYERS SAPPHIRE COMPLEX		Date/Time From: 09/13/2017 0700	Date/Time To: 09/13/2017 2000
		WED	WED
3. Incident Commander(s) and Command Staff:		6. Logistics Section:	
IC/UC	MIKE DUEITT MARK MORALES	CHIEF	JOHNNY SMITH, RICK BARRETT (T)
SAFETY OFFICER	LARRY CONNELL BRAD LIDELL, TONY RIVERS (T)	SERVICE BRANCH DIRECTOR	JOE WALKER
INFORMATION OFFICER	CATHERINE HIBBARD, JOE MAZZEO, JENI GARCIN (T)	SUPPLY UNIT	MARK MORGAN
LIAISON OFFICER	PAUL STEVENS MIKE WRIGHT	FACILITIES UNIT	SUSANNE ADAMS, DAVID MOODY (T)
		GROUND SUPPORT UNIT	THOMAS "BO" SULLIVAN CHARLES REESE
		FOOD UNIT	JIM LOWE
		COMMUNICATIONS UNIT	RON REGAN
4. Agency/Organization Representative(s):		MEDICAL UNIT	FRED ADLER, DAVID B. BURNS (T)
Agency/Organization	Name	ORDERING MANAGER	MAGGIE BELMORE, NINA GAINNEY
B-D NF	MELANY GLOSSA		
B-D NF	ERIC TOMASIK	SECURITY MANAGER	SCOTT CARRIGAN
BNF	JULIE KING	7. Operations Section:	
BNF	ERIC WINTHERS	OPS SECTION CHIEF	PETER MYERS, DAVID WALKER
USFS - LOLO NF	JEN HENSICK CHRIS FURR	PLANNING OPS	JAMIE SCHWARTZ, JEREMY BRAND (T)
DNRC	BRIAN ROBBINS	Branch	I
BLM	JOE ASHOR, STEVE HANCOCK	BRANCH DIRECTOR	JEFF SCHARDT
USFS - B-D NF	CAMERON RASOR	DIVISION/GROUP	G
5. Planning Section:			JON MCLAUGHLIN JOHN FRY (T)
CHIEF	TERRY PIERCE		
RESOURCES UNIT	DONNA THOMAS, RICH R AUBUCHON BARRY FARRELL	Branch	II
DEMOBILIZATION UNIT	MARG OLSON	BRANCH DIRECTOR	JEFF SCHARDT
SITUATION UNIT	JASON BRAUNSTEIN, MISSY FORDER (T)	DIVISION/GROUP	N/O/P
ITSS	JOE ASHBY, TONY FARMER	DIVISION/GROUP	STRUCTURE
GIS SPECIALIST	ANDREW THOMPSON, DAVID JONES MATT DISKINS, CHRISTIN VOSE (T)	DIVISION/GROUP	Z
FIRE BEHAVIOR ANALYST	BRUCE DAVENPORT BRENDA DALE (T)	DIVISION/GROUP	STAGING - LIL HOGBACK
INCIDENT METEOROLOGIST	MARK STUBBLEFIELD	DIVISION/GROUP	NIGHT SHIFT
TRAINING SPECIALIST	KELLY BALCARCZYK (T)	Branch	III
HUMAN RESOURCE SPECIALIST	LINDA BUCK K. CAHOON (T)	DIVISION/GROUP	A/E
READ - BDNF	RYAN POWELL	DIVISION/GROUP	I
READ - BNF	RYAN HUGHES	DIVISION/GROUP	K
BLM READ	LEA TUTTLE	DIVISION/GROUP	R/T
B-D READ	WADE JEROME	DIVISION/GROUP	W
LOLO READ	KATE ARENDT		KELLY CORNWALL
		7b. Air Operations Branch:	
		AIR OPS BRANCH DIRECTOR	LYNNE HOWARD, BART KICKLIGHTER (T)
		HELIBASE MANAGER	BRAD BERNARDY
		AIR SUPPORT SUPERVISOR	TERESA L WILLIAMSON
9. Prepared By:	Name: DONNA THOMAS	Position/Title: RESL	Signature:
ICS 203	IAP Page	Date/Time: 09/12/2017 2100	

ORGANIZATION ASSIGNMENT LIST (ICS 203)

1. Incident Name:		2. Operational Period: 0700 - 2000															
MEYERS SAPPHIRE COMPLEX		Date/Time From: 09/13/2017 0700 WED	Date/Time To: 09/13/2017 2000 WED														
<table border="1" style="width: 100%; border-collapse: collapse;"> <tr> <td colspan="2">8. Finance/Administration Section:</td> </tr> <tr> <td style="width: 15%;">CHIEF</td> <td>BONNY JOHNSON</td> </tr> <tr> <td>DEPUTY</td> <td>SANDRA MORRIS, JENNY CROSS (T)</td> </tr> <tr> <td>COMPENSATION UNIT</td> <td>ALICE BARNETTE DORIS DOSTER</td> </tr> <tr> <td>COST UNIT</td> <td></td> </tr> <tr> <td>TIME UNIT</td> <td>JEAN FRICK JUDY GAU (T)</td> </tr> <tr> <td></td> <td></td> </tr> </table>				8. Finance/Administration Section:		CHIEF	BONNY JOHNSON	DEPUTY	SANDRA MORRIS, JENNY CROSS (T)	COMPENSATION UNIT	ALICE BARNETTE DORIS DOSTER	COST UNIT		TIME UNIT	JEAN FRICK JUDY GAU (T)		
8. Finance/Administration Section:																	
CHIEF	BONNY JOHNSON																
DEPUTY	SANDRA MORRIS, JENNY CROSS (T)																
COMPENSATION UNIT	ALICE BARNETTE DORIS DOSTER																
COST UNIT																	
TIME UNIT	JEAN FRICK JUDY GAU (T)																
9. Prepared By:	Name: DONNA THOMAS	Position/Title: RESL	Signature:														
ICS 203	IAP Page	Date/Time: 09/12/2017 2100															



FIRE WEATHER FORECAST



Forecast No. 52

Name of Fire: Meyers Sapphire Complex

Prediction for: Day Shift

Unit: Beaverhead-Deer Lodge National Forest

Shift Date: 09/13/17 Wednesday

Time & Date Issued: 1855 MDT 09/12/17

Signed: Mark Stubblefield, IMET MS

Weather Discussion: Moisture from the southwest will bring a chance of showers and thunderstorms this morning. Drier air will move over the area this afternoon with breezy conditions. An area of low pressure will drop out of Canada late today increasing the chances of precipitation tonight. The chances of precipitation will increase through Thursday. Rain will become will be continuous late Thursday through Friday. The snow level could drop to 9000 feet by Thursday evening and possibly down to 5500 feet on Friday.

Today...

Weather & Sky: Mostly cloudy with a (30%) chance of morning showers and thunderstorms. Partly cloudy with a slight (10%) chance of showers and thunderstorms this afternoon.

Meyers Fire: (6000 to 8500 feet):

Max Temp: 70 to 77°F (Trend: down 3-5)
Min Humidity: 23 to 26% below 6500 feet, 28 to 32% above 6500 feet. (Trend: up 3-5)

Hogback Fire: (4000-6000 feet):

Max Temp: Valleys 82 to 87 Ridges 72-78°F
Min RH: Valleys 16 to 20% Ridges 22-25%

Valley Wind (20 Ft): Upslope/valley 3-5 mph until 1000, southwest winds 12-17 MPH by late morning.

Transport winds: SW 15 MPH. Mixing Height: 14000 MSL

Ridgetop Wind (20 Ft): Southwest 15 to 20 MPH.

Haines Index: 3 (low) LAL: 2

Tonight...

Weather & Sky: Mostly cloudy with a slight (20%) chance of showers.

Meyers Fire: (6000 to 8500 feet):

Min Temp: 45 to 50°F.
Max Humidity: 70 to 80%.

Hogback Fire: (4000-6000 feet):

Min Temp: 52 to 55°F.
Max RH: 70 to 78%.

Winds (20 Foot): SW 8 to 12 MPH until around 1900...then downcanyon 2 to 4 MPH.

Inversions may not form tonight due to the unstable air moving over the area. LAL: 1

Outlook for Thursday... Showers likely in the morning with rain becoming continuous late in the day. Snow level lowering through the day. Max Temp 50 to 60 F, Min RH 20 to 28%, 20-ft Winds Upslope/valley 3-5 MPH, then SW 10 to 15 MPH after 1100. Mixing level 10,000 MSL Transport winds: NE 10 to 15 MPH. Haines Index: 2 (very low). Ridgetop Wind (20 Ft): Southwest 15 to 20 MPH.

Extended Outlook Friday through Sunday

	<u>Max T</u>	<u>Min RH</u>	<u>1500 Wind Dir</u>	<u>1500 Wind spd</u>	<u>Sky / Precipitation</u>
Friday	40 to 50	70%	NE	23 MPH	Rain with snow down to 6000-6500 feet.
Saturday	45 to 55	50%	SW	8 MPH	Rain and snow showers early...then chance of showers.
Sunday	60 to 70	40%	SW	12 MPH	Slight chance of showers.

FIRE BEHAVIOR FORECAST

FORECAST NUMBER: 52	TYPE OF FIRE: Wildfire
FIRE NAME: Meyers & Sapphire Complex	OPERATIONAL PERIOD: Day 09/13/2017 Wednesday
DATE ISSUED: 09/12/2017	TIME ISSUED: 1700
UNIT: MT-BDF	PREPARED BY: Bruce Davenport FBAN/Brenda Dale FBANt

INPUTS

WEATHER SUMMARY: Red Flag Warning 1500 to 2000 for winds and dry conditions.

Temps: Meyers 70-77°F Hogback 82-87 °F **RH:** Meyers 23-26% Hogback 16-20%. **Winds:** Upslope early at 3-5 mph increasing and becoming SW 12-17 mph by late morning. Ridgetop winds SW 15 to 20. **Haines Index:** 3

OUTPUTS – FIRE BEHAVIOR

General:

Meyers Fire: Cooler temperatures and similar humidity to yesterday with slightly higher winds will yield essentially the same fire behavior. Heavy fuels are very dry and remain the main driver of fire spread. Expect sustained surface and group torching where the alignment of wind, heavy fuels, or slope occurs, especially when exposed to direct sunlight. Where sheltered from the wind, the fire will follow topography and fuels. Rollout will encourage the fire to become established lower on the slopes for potential upslope runs. Look for continued, although slower, growth in the same areas as yesterday, such as Divisions A/W, India, and Kilo.

Little Hogback Fire: Fire will continue to smolder in heavy fuels and duff. Exposed areas may experience single tree torching and short range spotting. Lofted embers will most likely create a spot fire on receptive fuels. Light grass/shrub fuels will spread readily on slopes.

SPECIFIC:

FUELS: Mixed conifer forest dominated by lodgepole pine, subalpine fir, Engelmann spruce, and Douglas-fir, with isolated pockets of whitebark pine on ridgetops.

- Beetle-killed lodgepole pine makes up 20-40% of forest canopy in the fire area.
- Heavy dead/down fuels from bug kill, previous wildfires and decadent forests are burning completely. Recent fire scars are inhibiting surface spread where present.
- On the Meyers Fire, valley bottom forests, wet meadows and drainages are green and will discourage surface fire spread. Live fuels on upper slopes continue to cure on all aspects.

Fine Fuels 4-7%; ERC values have been at record setting highs; 1000 hour fuel moistures have been at record setting lows.

Output Variable	Meyers Fire		Little Hogback Fire	
	Timber Fuel Model (FM10 (80%) and TU2 (20%))		Grass/Sage (GS2)	Lodgepole Pine/Fir/Spruce (FM8 (60%) & FM10 (40%))
	Sheltered	Unsheltered		
Surface Rate of Spread (ch/hr)	15	11	61	9
Flame Length (Feet)	7	6	8	8
Probability of Ignition (%)	56	56	56	56
Spotting Distance (miles)	0.4	0.4		0.4

AIR OPERATIONS: Weakness or absence of inversion may facilitate earlier aviation use.

SAFETY: Spotting can put you in a pinch! Assure application of LCES to avoid getting caught in the middle.

Division/Group Assignment List (ICS 204 WF)

1. Incident Name:			3.			
MEYERS SAPPHIRE COMPLEX			Branch:		Division/Group:	
2. Operational Period: 0700 - 2000			I		G	
Date/Time From: 09/13/2017 0700 WED		Date/Time To: 09/13/2017 2000 WED				
4. Operations Personnel						
OPERATIONS CHIEF		PETER MYERS, DAVID WALKER		BRANCH DIRECTOR JEFF SCHARDT		
PLANNING OPS		JAMIE SCHWARTZ, JEREMY BRAND (T)		DIVISION SUPERVISOR JON MCLAUGHLIN, JON FRY (T)		
				AIR OPERATIONS DIRECTOR LYNNE HOWARD BART KICKLIGHTER (T)		
5. Resources Assigned this Period						
Strike Team / Task Force / Resource Designator		LWD	Leader	Number Persons	Drop Off PT./Time	Pick Up PT./Time
TFLD		09/18	TONY BALLOU	1	GOAT SPIKE /0700	GOAT SPIKE/2000
TFLD		09/18	KEITH HALLORAN	1	GOAT SPIKE /0700	GOAT SPIKE/2000
HEQB		09/18	ARIC RASMUSSEN	1	GOAT SPIKE /0700	GOAT SPIKE/2000
HEQB		09/13	MONICA THOMAS	1	GOAT SPIKE /0700	GOAT SPIKE/2000
O-529 HEQB (T)		09/23	JASON WALKER	1	GOAT SPIKE /0700	GOAT SPIKE/2000
O-122 FAL 1 TIMBER TRAIL		09/18	SEITZ & CHITWOOD	2	GOAT SPIKE /0700	GOAT SPIKE/2000
E-930 ENG3		09/18	TRENTON DOUGLAS	4	GOAT SPIKE /0700	GOAT SPIKE/2000
E-482 ENG3		09/18	BRIAN REES	3	GOAT SPIKE /0700	GOAT SPIKE/2000
E-187 ENG6 NORTH IDAHO FIRE		09/15	JOHN LAUTENSLAGER	3	GOAT SPIKE /0700	GOAT SPIKE/2000
E-190 WTS2 CASTLE MTN FIRE		09/21	BOB BASTRUP	1	GOAT SPIKE /0700	GOAT SPIKE/2000
E-192 WTS2 BIRD WATER #8		09/16	RAY CONGDON	1	GOAT SPIKE /0700	GOAT SPIKE/2000
E-70 DOZ2 MADDEN TRUCKING		09/15	MOSES MADDEN	2	GOAT SPIKE /0700	GOAT SPIKE/2000
E-177 SKG2		09/23	ANDY JOHNSON	2	GOAT SPIKE /0700	GOAT SPIKE/2000
E-44 SKG3 SLACK		09/15	JAMIE SLACK	1	GOAT SPIKE /0700	GOAT SPIKE/2000
E-243 EXCA T1 ST. ONGE W/LOWBOY		09/17	EVAN SIPPL	2	GOAT SPIKE /0700	GOAT SPIKE/2000
E-262 EXCA T1 WESTERN MONTANA W/LOWBOY		09/19	WYATT LYONS	2	GOAT SPIKE /0700	GOAT SPIKE/2000
E-232 EXCA T2 WELCH BROS W/LOWBOY		09/25	FRANK COSANA	2	GOAT SPIKE /0700	GOAT SPIKE/2000
E-258 EXCA FAUST INC		09/16	BILL NELSON	2	GOAT SPIKE /0700	GOAT SPIKE/2000
8. Division/Group Communication Summary						
Function	Channel	RX Frequency N/W	RX Tone/NAC	TX Frequency N/W	TX Tone/NAC	Mode
COMMAND	10	164.6750N	123.0	169.8125N	123.0	A
TACTICAL	1	168.0500N	123.0	168.0500N	123.0	A
AIR TO GROUND	14	169.1500N		169.1500N		A
AIR TO GROUND	15	169.0875N		169.0875N		A
AIR GUARD	16	168.6250N		168.6250N	110.9	
9. Prepared By (Resource Unit Leader)			Approved By (Planning Section Chief)		Date	Time
DONNA THOMAS - RESL			TERRY PIERCE - PSC1 <i>Terry Pierce</i>		09/12/2017	2100


Division/Group Assignment List (ICS 204 WF)

1. Incident Name:			3.			
MEYERS SAPPHIRE COMPLEX			Branch:		Division/Group:	
2. Operational Period: 0700 - 2000			I		G	
Date/Time From: 09/13/2017 0700 WED		Date/Time To: 09/13/2017 2000 WED				
4. Operations Personnel						
OPERATIONS CHIEF		PETER MYERS, DAVID WALKER		BRANCH DIRECTOR		JEFF SCHARDT
PLANNING OPS		JAMIE SCHWARTZ, JEREMY BRAND (T)		DIVISION SUPERVISOR		JON MCLAUGHLIN, JON FRY (T)
				AIR OPERATIONS DIRECTOR		LYNNE HOWARD BART KICKLIGHTER (T)
5. Resources Assigned this Period						
Strike Team / Task Force / Resource Designator		LWD	Leader	Number Persons	Drop Off PT./Time	Pick Up PT./Time
E-242 LOG TRUCK JOE THOMAS		09/14	JOE THOMAS	1	GOAT SPIKE /0700	GOAT SPIKE/2000
E-260 SELF LOADING LOG TRUCK		09/17	JUSTIN HULFORD	1	GOAT SPIKE /0700	GOAT SPIKE/2000
E-251 LOG LOADER BRYANT W/LOWBOY		09/14	BRYCE RASMUSSEN	2	GOAT SPIKE /0700	GOAT SPIKE/2000
E-263 LOG LOADER RUSS REED LOGGING W/LOWBOY		09/20	STEVE KINZEL	2	GOAT SPIKE /0700	GOAT SPIKE/2000
0-488 AEMT			TERRY WILLIAMSON	1	GOAT SPIKE /0700	GOAT SPIKE/2000
0-415 SOF2 (T)		09/18	WESTON BURCH	1	GOAT SPIKE/0700	GOAT SPIKE/2000
6. Control Operations/Work Assignments:						
Task: Implement suppression rehab on north and east ends of Goat Creek Fire. Mop up all potential threatening hot spots along the fire edge on the east side of Goat Creek.						
Purpose: Minimize acres burned on Division G and complete suppression rehab.						
End State: Execute full suppression fire management strategies using direct protection strategies. Complete fire suppression rehab while minimizing exposure and impacts to critical values at risk.						
7. Special Instructions:						
Complete maintenance of equipment as appropriate and maintain readiness to engage as directed by operations.						
8. Division/Group Communication Summary						
Function	Channel	RX Frequency N/W	RX Tone/NAC	TX Frequency N/W	TX Tone/NAC	Mode
COMMAND	10	164.6750N	123.0	169.8125N	123.0	A
TACTICAL	1	168.0500N	123.0	168.0500N	123.0	A
AIR TO GROUND	14	169.1500N		169.1500N		A
AIR TO GROUND	15	169.0875N		169.0875N		A
AIR GUARD	16	168.6250N		168.6250N	110.9	
9. Prepared By (Resource Unit Leader)			Approved By (Planning Section Chief)		Date	Time
DONNA THOMAS - RESL			TERRY PIERCE - PSC1 <i>J. Pierce</i>		09/12/2017	2100

Division/Group Assignment List (ICS 204 WF)

1. Incident Name:			3.			
MEYERS SAPPHIRE COMPLEX			II		N/O/P	
2. Operational Period: 0700 - 2000						
Date/Time From: 09/13/2017 0700 WED		Date/Time To: 09/13/2017 2000 WED				
4. Operations Personnel						
OPERATIONS CHIEF		PETER L MYERS DAVID P WALKER		DIVISION/GROUP SUPERVISOR		GREG TITUS
PLANNING OPS		JAMIE SCHWARTZ, JEREMY BRAND (T)		AIR OPERATIONS DIRECTOR		LYNNE HOWARD BART KICKLIGHTER (T)
5. Resources Assigned this Period						
Strike Team / Task Force / Resource Designator		LWD	Leader	Number Persons	Drop Off PT./Time	Pick Up PT./Time
O-740 TFLD		09/27	JORDAN BLACK	1	MEYERS ICP/0700	MEYERS ICP/2000
O-388 TFLD (T)		09/22	LUCAS HARLEY	1	MEYERS ICP/0700	MEYERS ICP/2000
O-451 HEQB		09/23	ANTHONY MOORE	2	MEYERS ICP/0700	MEYERS ICP/2000
E-185 ENG3 WILDFIRE RESOURCES		09/13	REAGAN FARLEY	3	MEYERS ICP/0700	MEYERS ICP/2000
E-188 ENG6 XTREME (T)		09/13	JOSH MINSHALL	3	MEYERS ICP/0700	MEYERS ICP/2000
E-158 ENG6 METAL WORKS		09/24	RICK MANCHESTER	3	MEYERS ICP/0700	MEYERS ICP/2000
E-125 WTT2 R&J GRANGER		09/24	GARY KNUDSON	1	MEYERS ICP/0700	MEYERS ICP/2000
E-79 WTT2 MISSION MTN STAR		09/22	SCOTT HARMON	1	MEYERS ICP/0700	MEYERS ICP/2000
E-261 EXCA LITTLE BEAR CONTRUCTION W/ LOWBOY		09/20	MIKE HILL	1	MEYERS ICP/0700	MEYERS ICP/2000
E-420 EXCA T2 W/LOWBOY		09/27	CHARLES KOMBEREC	2	MEYERS ICP/0700	MEYERS ICP/2000
E-40 SKDS HALL WOOD PROCESSING		09/24	JEFF WEER	1	MEYERS ICP/0700	MEYERS ICP/2000
O-218 EMTF		09/13	JOHNNY HYDE	1	MEYERS ICP/0700	MEYERS ICP/2000
O-704 EMTF		09/24	GARY SIMPSON	1	MEYERS ICP/0700	MEYERS ICP/2000
E-3 AMBU THREE RIVERS		10/01	WESTGARD & HAGESTAD	2	MEYERS ICP/0700	MEYERS ICP/2000
6. Control Operations/Work Assignments:						
8. Division/Group Communication Summary						
Function	Channel	RX Frequency N/W	RX Tone/NAC	TX Frequency N/W	TX Tone/NAC	Mode
COMMAND	9	166.3375N	123.0	170.3875N	123.0	A
TACTICAL	3	168.6000N	123.0	168.6000N	123.0	A
AIR TO GROUND	14	169.1500N		169.1500N		A
AIR TO GROUND	15	169.0875N		169.0875N		A
AIR GUARD	16	168.6250N		168.6250N	110.9	
9. Prepared By (Resource Unit Leader)			Approved By (Planning Section Chief)		Date	Time
DONNA THOMAS - RESL			TERRY PIERCE - PSC1 <i>T. Pierce</i>		09/12/2017	2100

Division/Group Assignment List (ICS 204 WF)

1. Incident Name:			3.			
MEYERS SAPPHIRE COMPLEX			II	Division/Group: N/O/P		
2. Operational Period: 0700 - 2000						
Date/Time From: 09/13/2017 0700 WED			Date/Time To: 09/13/2017 2000 WED			
4. Operations Personnel						
OPERATIONS CHIEF	PETER L MYERS DAVID P WALKER		DIVISION/GROUP SUPERVISOR	GREG TITUS		
PLANNING OPS	JAMIE SCHWARTZ, JEREMY BRAND (T)		AIR OPERATIONS DIRECTOR	LYNNE HOWARD BART KICKLIGHTER (T)		
6. Control Operations/Work Assignments:						
<p>Task: Patrol and mop-up along fire edge. Provide support to other divisions as necessary. Work with READ to identify suppression repair needs.</p> <p>Purpose: Minimize acres burned and impacts to resources at risk.</p> <p>End State: Execute full suppression. Keep fire north of Rock Creek and west of Upper Willow Creek.</p>						
7. Special Instructions:						
Identify and remove excess equipment and back haul as appropriate.						
8. Division/Group Communication Summary						
Function	Channel	RX Frequency N/W	RX Tone/NAC	TX Frequency N/W	TX Tone/NAC	Mode
COMMAND	9	166.3375N	123.0	170.3875N	123.0	A
TACTICAL	3	168.6000N	123.0	168.6000N	123.0	A
AIR TO GROUND	14	169.1500N		169.1500N		A
AIR TO GROUND	15	169.0875N		169.0875N		A
AIR GUARD	16	168.6250N		168.6250N	110.9	
9. Prepared By (Resource Unit Leader)			Approved By (Planning Section Chief)		Date	Time
DONNA THOMAS - RESL			TERRY PIERCE - PSC1 		09/12/2017	2100

Division/Group Assignment List (ICS 204 WF)

1. Incident Name:			3.			
MEYERS SAPPHIRE COMPLEX			Branch:		Division/Group:	
2. Operational Period: 0700 - 2000			II		STRUCTURE	
Date/Time From: 09/13/2017 0700	WED	Date/Time To: 09/13/2017 2000				
4. Operations Personnel						
OPERATIONS CHIEF		PETER MYERS DAVID WALKER		DIVISION/GROUP SUPERVISOR		ALISON COONS
PLANNING OPS		JAMIE SCHWARTZ JEREMY BRAND (T)		AIR OPERATIONS DIRECTOR		LYNNE HOWARD BART KICKLIGHTER (T)
5. Resources Assigned this Period						
Strike Team / Task Force / Resource Designator		LWD	Leader	Number Persons	Drop Off PT./Time	Pick Up PT./Time
O-244 TFLD		09/23	DAN WHITE	1	MEYERS ICP /0700	MEYERS ICP /2000
E-234.1 TFLD (T)		09/16	JOSH STROHMEYER	1	MEYERS ICP /0700	MEYERS ICP /2000
E-46 ENG3 HART VENTURES 414253		09/25	JOE BEACH	3	MEYERS ICP/0700	MEYERS ICP/2000
E-45 ENG4 INLAND FOREST MGMT.		09/24	CHRIS TERWILLIGER	3	MEYERS ICP /0700	MEYERS ICP /2000
E-124 ENG4 OUTBACK FIREFIGHTING		09/20	JEREMIAH NUTTALL	3	MEYERS ICP /0700	MEYERS ICP /2000
E-189 ENG4 NATIONAL WILDLAND FIRE		09/19	LEENKUN BACA	3	MEYERS ICP /0700	MEYERS ICP /2000
E-48 ENG4 ALDER CREEK		09/24	BOYD CARR	3	MEYERS ICP/0700	MEYERS ICP/2000
E-133 WTS2 BUTLER ENTERPRISES		09/26	NICK DOLE	1	MEYERS ICP /0700	MEYERS ICP /2000
6. Control Operations/Work Assignments:						
Protect structures in Upper Willow Creek Drainage, Idle Ranch and Trout Retreat. Maintain structure protection equipment at Upper Willow structures. Provide support to adjacent Divisions as needed. Maintain IA readiness, backfill any structure protection needs with Engines from adjacent divisions. Identify and remove excess equipment.						
7. Special Instructions:						
Identify and map structures. Work with liaison Officer to advise and coordinate with with potentially affected private landowners. Gather GPS tracks of all constructed line in Division and turn into the Situation Unit.						
Specific hazard mitigations:						
<ul style="list-style-type: none"> ▪ Review the Wildland Urban interface "watch out" situations on page 12 of the IRPG. ▪ For IA, establish LCES and determine trigger points. 						
8. Division/Group Communication Summary						
Function	Channel	RX Frequency N/W	RX Tone/NAC	TX Frequency N/W	TX Tone/NAC	Mode
COMMAND	8	169.5375N	123.0	164.7125N	123.0	A
COMMAND	9	166.3375N	123.0	170.3875N	123.0	A
TACTICAL	4	168.7250N	123.0	168.7250N	123.0	A
AIR TO GROUND	14	169.1500N		169.1500N		A
AIR TO GROUND	15	169.0875N		169.0875N		A
AIR GUARD	16	168.6250N		168.6250N	110.9	
9. Prepared By (Resource Unit Leader)		Approved By (Planning Section Chief)			Date	Time
DONNA THOMAS - RESL		TERRY PIERCE - PSC1 <i>T. Pierce</i>			09/12/2017	2100

Division/Group Assignment List (ICS 204 WF)

1. Incident Name:			3.			
MEYERS SAPPHIRE COMPLEX			Branch:		Division/Group:	
2. Operational Period: 0700 - 2000			II		Z	
Date/Time From: 09/13/2017 0700 WED		Date/Time To: 09/13/2017 2000 WED				
4. Operations Personnel						
OPERATIONS CHIEF		PETER MYERS DAVID WALKER		DIVISION/GROUP SUPERVISOR		
PLANNING OPS		JAMIE SCHWARTZ JEREMY BRAND (T)		ALISON COONS LYNNE HOWARD BART KICKLIGHTER (T)		
5. Resources Assigned this Period						
Strike Team / Task Force / Resource Designator		LWD	Leader	Number Persons	Drop Off PT./Time	Pick Up PT./Time
O-459 TFLD		09/13	PATRICK KIERAN	1	MEYERS ICP/0700	MEYERS ICP/2000
O-460 TFLD (T)		09/20	TODD AYRES	1	MEYERS ICP/0700	MEYERS ICP/2000
E-30 ENG6 RED TRUCK WILDFIRE		09/16	RAY BROWN	3	MEYERS ICP/0700	MEYERS ICP/2000
E-234 ENG6 IL-MPF		09/16	SHAUN TRABADO	4	MEYERS ICP/0700	MEYERS ICP/2000
E-122 ENG6 GRIZ ONE		09/21	BOB RAADE	3	MEYERS ICP/0700	MEYERS ICP/2000
E-178 SKG2 SOFT TRACK ATTACK #2		09/18	TIM HEATS	2	MEYERS ICP/0700	MEYERS ICP/2000
E-46 UTV OUTBACK FIREFIGHTING LLC					MEYERS ICP/0700	MEYERS ICP/2000
E-47 UTV OUTBACK FIREFIGHTING LLC					MEYERS ICP/0700	MEYERS ICP/2000
E-119 UTV OUTBACK FIRE 747318					MEYERS ICP/0700	MEYERS ICP/2000
E-241 UTV CM BACKCOUNTRY RENTALS					MEYERS ICP/0700	MEYERS ICP/2000
O-457 EMPF		09/19	REX NIELSEN	1	MEYERS ICP/0700	MEYERS ICP/2000
O-462 SOF2		09/15	GARY SEXTON	1	MEYERS ICP/0700	MEYERS ICP/2000
8. Division/Group Communication Summary						
Function	Channel	RX Frequency N/W	RX Tone/NAC	TX Frequency N/W	TX Tone/NAC	Mode
COMMAND	6	170.4125N	123.0	165.9625N	123.0	A
COMMAND	8	169.5375N	123.0	164.7125N	123.0	A
COMMAND	11	171.0375N	123.0	163.8250N	123.0	A
TACTICAL	2	168.2000N	123.0	168.2000N	123.0	A
AIR TO GROUND	14	169.1500N		169.1500N		A
AIR TO GROUND	15	169.0875N		169.0875N		A
AIR GUARD	16	168.6250N		168.6250N	110.9	
9. Prepared By (Resource Unit Leader)			Approved By (Planning Section Chief)		Date	Time
DONNA THOMAS - RESL			TERRY PIERCE - PSC1 <i>T. Pierce</i>		09/12/2017	2100

Division/Group Assignment List (ICS 204 WF)

1. Incident Name:		3.				
MEYERS SAPPHIRE COMPLEX		Branch:		Division/Group:		
2. Operational Period: 0700 - 2000		II		Z		
Date/Time From: 09/13/2017 0700	WED	Date/Time To: 09/13/2017 2000	WED			
4. Operations Personnel						
OPERATIONS CHIEF		PETER MYERS DAVID WALKER		DIVISION/GROUP SUPERVISOR		ALISON COONS
PLANNING OPS		JAMIE SCHWARTZ JEREMY BRAND (T)		AIR OPERATIONS DIRECTOR		LYNNE HOWARD BART KICKLIGHTER (T)
5. Resources Assigned this Period						
Strike Team / Task Force / Resource Designator	LWD	Leader	Number Persons	Drop Off PT./Time	Pick Up PT./Time	
6. Control Operations/Work Assignments:						
Task: Continue mop-up and cold trail fire edge along division break. Utilize aircraft, engines and fire personnel to hold fire north and east of Rock Creek Road. Provide protection to structures.						
Purpose: Minimize acres burned and impacts to resources at risk.						
End State: Execute full suppression. Keep fire east of Rock Creek and minimize impacts to values at risk.						
7. Special Instructions:						
Identify and remove excess equipment and back haul as appropriate.						
8. Division/Group Communication Summary						
Function	Channel	RX Frequency N/W	RX Tone/NAC	TX Frequency N/W	TX Tone/NAC	Mode
COMMAND	6	170.4125N	123.0	165.9625N	123.0	A
COMMAND	8	169.5375N	123.0	164.7125N	123.0	A
COMMAND	11	171.0375N	123.0	163.8250N	123.0	A
TACTICAL	2	168.2000N	123.0	168.2000N	123.0	A
AIR TO GROUND	14	169.1500N		169.1500N		A
AIR TO GROUND	15	169.0875N		169.0875N		A
AIR GUARD	16	168.6250N		168.6250N	110.9	
9. Prepared By (Resource Unit Leader)		Approved By (Planning Section Chief)			Date	Time
DONNA THOMAS - RESL		TERRY PIERCE - PSC1 <i>T. Pierce</i>			09/12/2017	2100

Division/Group Assignment List (ICS 204 WF)

1. Incident Name:			3.			
MEYERS SAPPHIRE COMPLEX			Branch:		Division/Group:	
2. Operational Period: 0700 - 2000			II		STAGING - LIL HOGBACK	
Date/Time From: 09/13/2017 0700 WED		Date/Time To: 09/13/2017 2000 WED				
4. Operations Personnel						
OPERATIONS CHIEF		PETER MYERS DAVID WALKER		BRANCH DIRECTOR JEFF SCHARDT		
PLANNING OPS		JAMIE SCHWARTZ JEREMY BRAND (T)		AIR OPERATIONS DIRECTOR LYNNE HOWARD (T) BART KICKLIGHTER (T)		
5. Resources Assigned this Period						
Strike Team / Task Force / Resource Designator		LWD	Leader	Number Persons	Drop Off PT./Time	Pick Up PT./Time
E-126 WTS1 HIGHSIERRA ENTERPRISE		09/26	SCOTT HUBBARD	1	MEYERS ICP/0700	MEYERS ICP/2000
E-132 WTS2 PRIMMER TENDER		09/14	REBECCA DAUL	1	MEYERS ICP/0700	MEYERS ICP/2000
E-194 WTS2 BIRD WATER #6		09/16	TODD BENEDICT	1	MEYERS ICP/0700	MEYERS ICP/2000
E-191 WTS2		09/16	MIKE THOMAS	1	MEYERS ICP/0700	MEYERS ICP/2000
E-265 DOZ3		09/22	BRAD SMITH	1	MEYERS ICP/0700	MEYERS ICP/2000
E-179 SKDS WILDLAND FIREFIGHTERS		09/17	LARRY PEASE	2	MEYERS ICP/0700	MEYERS ICP/2000
E-182 SKDS ATTACK #3		09/13	CHRIS DESORCY	2	MEYERS ICP/0700	MEYERS ICP/2000
E-267 DUMP TRUCK ALL TERRAIN TRUCKING		09/21	JOHNNY BAUER	1	MEYERS ICP/0700	MEYERS ICP/2000
6. Control Operations/Work Assignments:						
7. Special Instructions:						
Complete maintenance of equipment as appropriate and maintain readiness to engage as directed by operations.						
8. Division/Group Communication Summary						
Function	Channel	RX Frequency N/W	RX Tone/NAC	TX Frequency N/W	TX Tone/NAC	Mode
COMMAND	8	169.5375N	123.0	164.7125N	123.0	A
COMMAND	9	166.3375N	123.0	170.3875N	123.0	A
TACTICAL	4	168.7250N	123.0	168.7250N	123.0	A
AIR TO GROUND	14	169.1500N		169.1500N		A
AIR TO GROUND	15	169.0875N		169.0875N		A
AIR GUARD	16	168.6250N		168.6250N	110.9	
9. Prepared By (Resource Unit Leader)			Approved By (Planning Section Chief)		Date	Time
DONNA THOMAS - RESL			TERRY PIERCE - PSC1 <i>J. Pierce</i>		09/12/2017	2100

Division/Group Assignment List (ICS 204 WF)

1. Incident Name:			3.			
MEYERS SAPPHIRE COMPLEX			II	Division/Group: NIGHT SHIFT		
2. Operational Period: NIGHT						
Date/Time From: 09/13/2017 1800 WED	Date/Time To: 09/14/2017 0700 THU					
4. Operations Personnel						
OPERATIONS CHIEF	PETER MYERS DAVID WALKER		DIVISION SUPERVISOR	BERT PLANTE		
PLANNING OPS	JAMIE SCHWARTZ JEREMY BRAND (T)		AIR OPERATIONS DIRECTOR	LYNNE HOWARD		
5. Resources Assigned this Period						
Strike Team / Task Force / Resource Designator	LWD	Leader	Number Persons	Drop Off PT./Time	Pick Up PT./Time	
E-26 ENG4 FIRECO	09/18	CLAYTON CONSTANT	3	MEYERS ICP/1800	MEYERS ICP/0700	
E-44 ENG6 TORCH FIRE 63	09/16	ANDY TOLMAN	3	MEYERS ICP/1800	MEYERS ICP/0700	
6. Control Operations/Work Assignments:						
Task: Patrol and mop up threats to resources along Rock Creek. Purpose: Minimize area boundary and impacts to resources at risk. End State: Execute full suppression.						
7. Special Instructions:						
8. Division/Group Communication Summary						
Function	Channel	RX Frequency N/W	RX Tone/NAC	TX Frequency N/W	TX Tone/NAC	Mode
TACTICAL	2	168.2000N	123.0	168.2000N	123.0	A
COMMAND	8	169.5375N	123.0	164.7125N	123.0	A
COMMAND	9	166.3375N	123.0	170.3875N	123.0	A
COMMAND	11	171.0375N	123.0	163.8250N	123.0	A
9. Prepared By (Resource Unit Leader)		Approved By (Planning Section Chief)		Date	Time	
DONNA THOMAS - RESL		TERRY PIERCE - PSC1 <i>T. Pierce</i>		09/12/2017	2100	

Division/Group Assignment List (ICS 204 WF)

1. Incident Name:			3.			
MEYERS SAPPHIRE COMPLEX			Branch:		Division/Group:	
2. Operational Period: 0700 - 2000			III		A/E	
Date/Time From: 09/13/2017 0700	WED	Date/Time To: 09/13/2017 2000				
4. Operations Personnel						
OPERATIONS CHIEF		PETE MYERS DAVID WALKER		DIVISION/GROUP SUPERVISOR		JOE BURGETT
PLANNING OPS		JAMIE SCHWARTZ, JEREMY BRAND (T)		AIR OPERATIONS DIRECTOR		LYNNE HOWARD BART KICKLIGHTER (T)
5. Resources Assigned this Period						
Strike Team / Task Force / Resource Designator		LWD	Leader	Number Persons	Drop Off PT./Time	Pick Up PT./Time
O-697 TFLD		09/25	JENNIFER NEPPL	1	MEYERS ICP /0700	MEYERS ICP/2000
O-247 MILLER CREEK MODULE 2 FAL1		09/19	VINCE NUZZO	2	MEYERS ICP /0700	MEYERS ICP/2000
E-333 ENG4 INLAND FOREST		09/25	DAVE LOVEJOY	2	MEYERS ICP /0700	MEYERS ICP/2000
E-39 ENG6 SCOTTS FIRE		09/15	DAVID HENDERSON	3	MEYERS ICP /0700	MEYERS ICP/2000
E-304 ENG6 CARIBOU TARGHEE 632		09/26	AUSTIN NIELSON	4	MEYERS ICP /0700	MEYERS ICP/2000
E-41 ENG6 BROCKWAY		09/24	RODGER BROCKWAY	3	MEYERS ICP /0700	MEYERS ICP/2000
E-63 ENG6 HIGH DESERT		09/16	TOM HANKS	2	MEYERS ICP /0700	MEYERS ICP/2000
E-123 ENG6		09/20	JAMES DOUGLES	2	MEYERS ICP /0700	MEYERS ICP/2000
O-548 SOF2		09/16	DAVID CARTER	1	MEYERS ICP /0700	MEYERS ICP/2000
E-246 AMBU		09/25	A1 AMBULANCE		MEYERS ICP /0700	MEYERS ICP/2000
6. Control Operations/Work Assignments:						
<p>Task: Implement structure protection plan at Moose Lake Subdivision, Lolo Camp, and Helen's Cabin. Mop-up all spots on the east side of road 5106. Mop up previous burnout operation around DP1.</p> <p>Purpose: To secure structures at Moose Lake Subdivision, Lolo Camp and Helen's Cabin.</p> <p>End State: Protect values at risk and minimize impacts/threats to the Moose Lake Subdivision, Lolo Camp and Helen's Cabin.</p>						
7. Special Instructions:						
<p>Refer to the 220 for aerial water use practices to prevent the spread of aquatic invasives.</p> <p>Saw out Road 5106 from DP 1 to DP 19.</p>						
8. Division/Group Communication Summary						
Function	Channel	RX Frequency N/W	RX Tone/NAC	TX Frequency N/W	TX Tone/NAC	Mode
COMMAND	9	168.5750N	114.8	173.6750N	114.8	A
TACTICAL	1	168.0500N	114.8	168.0500N	114.8	A
AIR TO GROUND	14	169.2000N		169.2000N		A
AIR TO GROUND	15	164.7500N		164.7500N		A
AIR GUARD	16	168.6250N		168.6250N	110.9	A
9. Prepared By (Resource Unit Leader)			Approved By (Planning Section Chief)		Date	Time
RICH AUBUCHON - RESL			TERRY PIERCE - PSC1 <i>T. Pierce</i>		09/12/2017	2100

Division/Group Assignment List (ICS 204 WF)

1. Incident Name:				3.			
MEYERS SAPPHIRE COMPLEX				Branch:		Division/Group:	
2. Operational Period: 0700 - 2000				III		A/E	
Date/Time From: 09/13/2017 0700 WED		Date/Time To: 09/13/2017 2000 WED					
4. Operations Personnel							
OPERATIONS CHIEF		PETE MYERS DAVID WALKER		DIVISION/GROUP SUPERVISOR		JOE BURGETT	
PLANNING OPS		JAMIE SCHWARTZ, JEREMY BRAND (T)		AIR OPERATIONS DIRECTOR		LYNNE HOWARD BART KICKLIGHTER (T)	
7. Special Instructions:							
Identify IA resources within division.							
8. Division/Group Communication Summary							
Function	Channel	RX Frequency N/W	RX Tone/NAC	TX Frequency N/W	TX Tone/NAC	Mode	
COMMAND	9	168.5750N	114.8	173.6750N	114.8	A	
TACTICAL	1	168.0500N	114.8	168.0500N	114.8	A	
AIR TO GROUND	14	169.2000N		169.2000N		A	
AIR TO GROUND	15	164.7500N		164.7500N		A	
AIR GUARD	16	168.6250N		168.6250N	110.9	A	
9. Prepared By (Resource Unit Leader)			Approved By (Planning Section Chief)			Date	Time
RICH AUBUCHON - RESL			TERRY PIERCE - PSC1			09/12/2017	2100

Division/Group Assignment List (ICS 204 WF)

1. Incident Name:			3.			
MEYERS SAPPHIRE COMPLEX			Branch:		Division/Group:	
2. Operational Period: 0700 - 2000			III		I	
Date/Time From: 09/13/2017 0700 WED		Date/Time To: 09/13/2017 2000 WED				
4. Operations Personnel						
OPERATIONS CHIEF		PETER MYERS DAVID WALKER		DIVISION/GROUP SUPERVISOR		
PLANNING OPS		JAMIE SCHWARTZ JEREMY BRAND (T)		JEREMY BRAND JON RUPP (T), NICK PETERS (T)		
		AIR OPERATIONS DIRECTOR		LYNNE HOWARD BART KICKLIGHTER (T)		
5. Resources Assigned this Period						
Strike Team / Task Force / Resource Designator		LWD	Leader	Number Persons	Drop Off PT./Time	Pick Up PT./Time
E-142 TIMBER TASK FORCE					EAST FORK SPIKE/0700	EAST FORK SPIKE/2000
E-142 HE TASK FORCE LEADER		09/14	JEFF HOLLIDAY	1	EAST FORK SPIKE/0700	EAST FORK SPIKE/2000
E-142 TIMBER FELLER BUNCHER		09/23	TONY STEVENS	1	EAST FORK SPIKE/0700	EAST FORK SPIKE/2000
E-142 TIMBER DOZ2		09/14	BRAD MORIGEAU	1	EAST FORK SPIKE/0700	EAST FORK SPIKE/2000
E-142 TIMBER SKG2		09/14	KEITH BRANDEMIHL	1	EAST FORK SPIKE/0700	EAST FORK SPIKE/2000
E-142 TIMBER SKD2		09/20	CHASE STOKER	1	EAST FORK SPIKE/0700	EAST FORK SPIKE/2000
E-142 BLACK DIAMOND LOWBOY		09/27	JREMY FLICK	1	EAST FORK SPIKE/0700	EAST FORK SPIKE/2000
E-142 K-COMPANY LOWBOY		09/23	KALVIN GOVER	1	EAST FORK SPIKE/0700	EAST FORK SPIKE/2000
E-142 B MORE LOWBOY		09/17	JASON BANGEN	1	EAST FORK SPIKE/0700	EAST FORK SPIKE/2000
C-51 LEWIS & CLARK IHC		09/13	MATT HOLMSTROM	21	EAST FORK SPIKE/0700	EAST FORK SPIKE/2000
TFLD		09/17	RYAN WOIRHAYE	1	EAST FORK SPIKE/0700	EAST FORK SPIKE/2000
TFLD (T)		09/21	CORY RENNAKER	1	EAST FORK SPIKE/0700	EAST FORK SPIKE/2000
C-51.2 TFLD (T)		09/25	NICK WYDRA	1	EAST FORK SPIKE/0700	EAST FORK SPIKE/2000
O-663 HEQB (T)		09/22	MIKE NOVA	1	EAST FORK SPIKE/0700	EAST FORK SPIKE/2000
E-182 ROCKY MOUNTIAN FIRE ENG3		09/17	RON GENTRY	3	EAST FORK SPIKE/0700	EAST FORK SPIKE/2000
8. Division/Group Communication Summary						
Function	Channel	RX Frequency N/W	RX Tone/NAC	TX Frequency N/W	TX Tone/NAC	Mode
COMMAND	9	168.5750N	114.8	173.6750N	114.8	A
TACTICAL	3	168.6000N	123.0	168.6000N	123.0	A
AIR TO GROUND	14	169.2000N		169.2000N		A
AIR TO GROUND	15	164.7500N		164.7500N		A
AIR GUARD	16	168.6250N		168.6250N	110.9	A
9. Prepared By (Resource Unit Leader)		Approved By (Planning Section Chief)			Date	Time
RICH AUBUCHON - RESL		TERRY PIERCE - PSC1 <i>T. Pierce</i>			09/12/2017	2100

Division/Group Assignment List (ICS 204 WF)

1. Incident Name:				3.				
MEYERS SAPPHIRE COMPLEX				III	Branch:		Division/Group:	
2. Operational Period: 0700 - 2000					I			
Date/Time From: 09/13/2017 0700 WED		Date/Time To: 09/13/2017 2000 WED						
4. Operations Personnel								
OPERATIONS CHIEF		PETER MYERS DAVID WALKER		DIVISION/GROUP SUPERVISOR		JEREMY BRAND JON RUPP (T), NICK PETERS (T)		
PLANNING OPS		JAMIE SCHWARTZ JEREMY BRAND (T)		AIR OPERATIONS DIRECTOR		LYNNE HOWARD BART KICKLIGHTER (T)		
5. Resources Assigned this Period								
Strike Team / Task Force / Resource Designator		LWD	Leader	Number Persons	Drop Off PT./Time	Pick Up PT./Time		
E-289 GIST ENTERPRISES ENG3		09/23	LEW WALLACE	3	EAST FORK SPIKE/0700	EAST FORK SPIKE/2000		
E-288 HOTSPOT FIRE ENG5		09/20	CATHY PALIN	3	EAST FORK SPIKE/0700	EAST FORK SPIKE/2000		
E-268 ROCKY MOUNTAIN TIMBER ENG6		09/13	BRIAN CAHOON	3	EAST FORK SPIKE/0700	EAST FORK SPIKE/2000		
E-342 METAL WORKS ENG6		09/18	EUGENE WEASEL	3	EAST FORK SPIKE/0700	EAST FORK SPIKE/2000		
E-134 MELROSE VFD WTT2		09/21	GEORGE GOODY	1	EAST FORK SPIKE/0700	EAST FORK SPIKE/2000		
E-264 ANDERSEN SEWER WTT2		09/22		1	EAST FORK SPIKE/0700	EAST FORK SPIKE/2000		
E-59 CC STACKING DOZ2		09/25	CRAIG CORNELL	1	EAST FORK SPIKE/0700	EAST FORK SPIKE/2000		
E-1 CC STACKING DOZ3		09/16	BILL WALKER	1	EAST FORK SPIKE/0700	EAST FORK SPIKE/2000		
E-136 AC LOGGING SKD2		09/17	ALAN CONOVER	1	EAST FORK SPIKE/0700	EAST FORK SPIKE/2000		
E-137 INTERMOUNTAIN SKD2		09/16	WILLIAM JOHNSON	1	EAST FORK SPIKE/0700	EAST FORK SPIKE/2000		
E-5 SHERRILL LOGGING FELLER BUNCHER		09/15	JESSE SHERRILL	1	EAST FORK SPIKE/0700	EAST FORK SPIKE/2000		
E-129 FLANAGAN FELLER BUNCHER		09/19	DALE FLANAGAN	1	EAST FORK SPIKE/0700	EAST FORK SPIKE/2000		
E-229 TIMBER SOLUTIONS FORW		09/20	PAUL LOVAAS	1	EAST FORK SPIKE/0700	EAST FORK SPIKE/2000		
E-62 FLANAGAN FORWARDER		09/22	EARL FLANAGAN	1	EAST FORK SPIKE/0700	EAST FORK SPIKE/2000		
E-253 TIMBER TRAIL EXCA		09/19	MIKE THORSON	1	EAST FORK SPIKE/0700	EAST FORK SPIKE/2000		
8. Division/Group Communication Summary								
Function	Channel	RX Frequency N/W	RX Tone/NAC	TX Frequency N/W	TX Tone/NAC	Mode		
COMMAND	9	168.5750N	114.8	173.6750N	114.8	A		
TACTICAL	3	168.6000N	123.0	168.6000N	123.0	A		
AIR TO GROUND	14	169.2000N		169.2000N		A		
AIR TO GROUND	15	164.7500N		164.7500N		A		
AIR GUARD	16	168.6250N		168.6250N	110.9	A		
9. Prepared By (Resource Unit Leader)			Approved By (Planning Section Chief)			Date	Time	
RICH AUBUCHON - RESL			TERRY PIERCE - PSC1 <i>J. Pierce</i>			09/12/2017	2100	

Division/Group Assignment List (ICS 204 WF)

1. Incident Name:			3.			
MEYERS SAPPHIRE COMPLEX			Branch:		Division/Group:	
2. Operational Period: 0700 - 2000			III		I	
Date/Time From: 09/13/2017 0700 WED		Date/Time To: 09/13/2017 2000 WED				
4. Operations Personnel						
OPERATIONS CHIEF		PETER MYERS DAVID WALKER		DIVISION/GROUP SUPERVISOR		
PLANNING OPS		JAMIE SCHWARTZ JEREMY BRAND (T)		JEREMY BRAND JON RUPP (T), NICK PETERS (T)		
AIR OPERATIONS DIRECTOR				LYNNE HOWARD BART KICKLIGHTER (T)		
5. Resources Assigned this Period						
Strike Team / Task Force / Resource Designator		LWD	Leader	Number Persons	Drop Off PT./Time	Pick Up PT./Time
O-674 SOF1		09/23	BRAD LIDELL	1	EAST FORK SPIKE/0700	EAST FORK SPIKE/2000
O-537 EMTB		09/15	OLENA GARTNER	1	EAST FORK SPIKE/0700	EAST FORK SPIKE/2000
6. Control Operations/Work Assignments:						
Task: In Billy Springer Memorial and Bonanza Subdivisions, continue structure protection measures. Finish and improve hand and mechanical line around subdivisions and threatened structures.						
Purpose: To secure structures and private property in the Bill Springer Memorial and Bonanza Subdivisions.						
End State: To protect values at risk and minimize impacts/threats in the Billy Springer Memorial and Bonanza Subdivisions.						
7. Special Instructions:						
Refer to the 220 for aerial water use practices to prevent the spread of aquatic invasives.						
Identify IA resources within division.						
8. Division/Group Communication Summary						
Function	Channel	RX Frequency N/W	RX Tone/NAC	TX Frequency N/W	TX Tone/NAC	Mode
COMMAND	9	168.5750N	114.8	173.6750N	114.8	A
TACTICAL	3	168.6000N	123.0	168.6000N	123.0	A
AIR TO GROUND	14	169.2000N		169.2000N		A
AIR TO GROUND	15	164.7500N		164.7500N		A
AIR GUARD	16	168.6250N		168.6250N	110.9	A
9. Prepared By (Resource Unit Leader)			Approved By (Planning Section Chief)		Date	Time
RICH AUBUCHON - RESL			TERRY PIERCE - PSC1 <i>T. Pierce</i>		09/12/2017	2100

Division/Group Assignment List (ICS 204 WF)

1. Incident Name:			3.			
MEYERS SAPPHIRE COMPLEX			III		K	
2. Operational Period: 0700 - 2000						
Date/Time From: 09/13/2017 0700 WED		Date/Time To: 09/13/2017 2000 WED				
4. Operations Personnel						
OPERATIONS CHIEF		PETER MYERS DAVID WALKER		DIVISION/GROUP SUPERVISOR		SHANE STURGILL
PLANNING OPS		JAMIE SCHWARTZ JEREMY BRAND (T)		AIR OPERATIONS DIRECTOR		LYNNE HOWARD, BART KICKLIGHTER (T)
5. Resources Assigned this Period						
Strike Team / Task Force / Resource Designator		LWD	Leader	Number Persons	Drop Off PT./Time	Pick Up PT./Time
O-246 MILLER CREEK MODULE 3 FAL1		09/24	PETE CLIFFORD	2	MEYERS ICP/0700	MEYERS ICP/2000
O-696 TFLD		09/23	ROBERT VICK	1	MEYERS ICP/0700	MEYERS ICP/2000
E-287 ENG3 CASTLE MOUNTAIN		09/20	RHODINA TSOSIE	3	MEYERS ICP/0700	MEYERS ICP/2000
E-86 ENG6 AEGIS		09/14	ROY VARNEY	3	MEYERS ICP/0700	MEYERS ICP/2000
E-305 ENG6 NORTHWEST FIRE 0710		09/14	MARCUS JANES	3	MEYERS ICP/0700	MEYERS ICP/2000
E-307 ENG6 CENTRAL AZ FIRE 548		09/14	MATHEW MAYHALL	3	MEYERS ICP/0700	MEYERS ICP/2000
E-306 ENG6 GREEN VALLEY 150		09/14	MICHAEL CARRAFA	3	MEYERS ICP/0700	MEYERS ICP/2000
E-143 MORANVILLE WTT2		09/23	CARY TAYLOR	1	MEYERS ICP/0700	MEYERS ICP/2000
O-563 EMPF		09/14	MELANIE R MILLER	1	MEYERS ICP/0700	MEYERS ICP/2000
6. Control Operations/Work Assignments:						
Task: Continue to evaluate potential opportunities for point protection. Conduct burnout operations where feasible.						
Purpose: To secure structures and private property in the Frog Pond Basin.						
End State: Protect values at risk and minimize impacts and threats to Frog Pond Basin while minimizing exposure and impacts to critical values at risk.						
7. Special Instructions:						
8. Division/Group Communication Summary						
Function	Channel	RX Frequency N/W	RX Tone/NAC	TX Frequency N/W	TX Tone/NAC	Mode
COMMAND	9	168.5750N	114.8	173.6750N	114.8	A
TACTICAL	2	168.2000N	114.8	168.2000N	114.8	A
AIR TO GROUND	14	169.2000N		169.2000N		A
AIR TO GROUND	15	164.7500N		164.7500N		A
AIR GUARD	16	168.6250N		168.6250N	110.9	A
9. Prepared By (Resource Unit Leader)			Approved By (Planning Section Chief)		Date	Time
RICH AUBUCHON - RESL			TERRY PIERCE - PSC1 <i>T. Pierce</i>		09/12/2017	2100

Division/Group Assignment List (ICS 204 WF)

1. Incident Name:		3.				
MEYERS SAPPHIRE COMPLEX		Branch:		Division/Group:		
2. Operational Period: 0700 - 2000		III		R/T		
Date/Time From: 09/13/2017 0700	WED	Date/Time To: 09/13/2017 2000			WED	
4. Operations Personnel						
OPERATIONS CHIEF		PETER MYERS, DAVID WALKER		DIVISION/GROUP SUPERVISOR		BRIAN BROWNING JACOB JERESEK (T)
PLANNING OPS		JAMIE SCHWARTZ, JEREMY BRAND (T)		AIR OPERATIONS DIRECTOR		LYNN HOWARD BART KICKLIGHTER (T)
5. Resources Assigned this Period						
Strike Team / Task Force / Resource Designator	LWD	Leader	Number Persons	Drop Off PT./Time	Pick Up PT./Time	
C-56 BITTERROOT IHC	09/15	MATTHEW MICHALISZYN	21	MEYER ICP/0700	MEYER ICP/2000	
E-308 ENG6 BERTHOUD	09/14	SHANE PRIME	3	MEYER ICP/0700	MEYER ICP/2000	
E-309 ENG6 WORLAND 63	09/13	BEN GOMEZ	3	MEYER ICP/0700	MEYER ICP/2000	
E-63 SKG3 AC LOGGING	09/21	SOULTER GANAN	1	MEYER ICP/0700	MEYER ICP/2000	
E-235 WT2 CASTLE MOUNTAIN FIRE	09/20	ARTIE JAMES	1	MEYER ICP/0700	MEYER ICP/2000	
EMTF	09/14	CHRIS ORR	1	MEYER ICP/0700	MEYER ICP/2000	
O-592.6 SOF1	09/16	LARRY CONNELL	1	MEYER ICP/0700	MEYER ICP/2000	
6. Control Operations/Work Assignments:						
Task: Patrol for spot fires and slop overs; mop up 100%. Mop up perimeter of burnout 30-300 feet, where safe to do so, to secure the fire line. Monitor spot fire in Senate Creek.						
Purpose: Minimize acres burned in DIV R/T.						
End State: Execute full suppression fire management strategies using indirect protection tactics to guide fire into man-made or natural barriers, while minimizing firefighter exposure and impacts to critical values at risk.						
7. Special Instructions:						
Refer to the 220 for aerial water use practices to prevent the spread of aquatic invasives.						
Identify IA resources within division.						
8. Division/Group Communication Summary						
Function	Channel	RX Frequency N/W	RX Tone/NAC	TX Frequency N/W	TX Tone/NAC	Mode
COMMAND	7	168.0750N	114.8	170.4250N	114.8	A
TACTICAL	4	166.7250N	114.8	166.7250N	114.8	A
AIR TO GROUND	14	169.2000N		169.2000N		A
AIR TO GROUND	15	164.7500N		164.7500N		A
AIR GUARD	16	168.6250N		168.6250N	110.9	A
9. Prepared By (Resource Unit Leader)		Approved By (Planning Section Chief)		Date	Time	
RICH AUBUCHON - RESL		TERRY PIERCE - PSC1 <i>T. Pierce</i>		09/12/2017	2100	

Division/Group Assignment List (ICS 204 WF)

1. Incident Name:			3.			
MEYERS SAPPHIRE COMPLEX			Branch:		Division/Group:	
2. Operational Period: 0700 - 2000			III		W	
Date/Time From: 09/13/2017 0700 WED		Date/Time To: 09/13/2017 2000 WED				
4. Operations Personnel						
OPERATIONS CHIEF		PETER MYERS DAVID WALKER		DIVISION/GROUP SUPERVISOR KELLY CORNWALL		
PLANNING OPS		JAMIE SCHWARTZ JEREMY BRAND (T)		AIR OPERATIONS DIRECTOR LYNNE HOWARD BART KICKLIGHTER (T)		
5. Resources Assigned this Period						
Strike Team / Task Force / Resource Designator		LWD	Leader	Number Persons	Drop Off PT./Time	Pick Up PT./Time
UNSTAFFED						
6. Control Operations/Work Assignments:						
Task: Scout, map and acquire intel on previous preparations for contingency line. Assemble needs and time lines to complete if Management Action Points are breached						
Purpose: Minimize area boundary and impacts to resources at risk.						
End State: Execute full suppression.						
7. Special Instructions:						
Complete maintenance of equipment as appropriate and maintain readiness to engage as directed by operations.						
8. Division/Group Communication Summary						
Function	Channel	RX Frequency N/W	RX Tone/NAC	TX Frequency N/W	TX Tone/NAC	Mode
COMMAND	7	168.0750N	114.8	170.4250N	114.8	A
TACTICAL	5	166.7750N	114.8	166.7750N	114.8	A
AIR TO GROUND	14	169.2000N		169.2000N		A
AIR TO GROUND	15	164.7500N		164.7500N		A
AIR GUARD	16	168.6250N		168.6250N	110.9	A
9. Prepared By (Resource Unit Leader)			Approved By (Planning Section Chief)		Date	Time
RICH AUBUCHON - RESL			TERRY PIERCE - PSC1 <i>T. Pierce</i>		09/12/2017	2100

INCIDENT RADIO COMMUNICATIONS PLAN (ICS 205)

1. Incident Name: MEYERS SAPPHIRE COMPLEX	2. Date/Time Prepared: Date: 09/12/2017 Time: 2100	3. Operational Period: Date/Time From: 09/13/2017 0700 Date/Time To: 09/13/2017 2000
		WED
		WED

4. Basic Radio Channel Use:

Zone Group	Ch #	Function	Channel Name/Trunked Radio System Talkgroup	Assignment	RX Freq	RX Tone/NAC	TX Freq	TX Tone/NAC	Mode (A, D, or M)	Remarks
MEYERS	1	TACTICAL	TAC 1	DIV A/E	168.0500N	114.8	168.0500N	114.8	A	
MEYERS	2	TACTICAL	TAC 2	DIV K	168.2000N	114.8	168.2000N	114.8	A	
MEYERS	3	TACTICAL	TAC 3	DIV I	168.6000N	114.8	168.6000N	114.8	A	
MEYERS	4	TACTICAL	TAC 4	DIV R/T	166.7250N	114.8	166.7250N	114.8	A	
MEYERS	5	TACTICAL	TAC 5	DIV W	166.7750N	114.8	166.7750N	114.8	A	
MEYERS	6	TACTICAL	TAC 6		168.2500N	114.8	168.2500N	114.8	A	
MEYERS	7	COMMAND	CMD 3	N. OF THE FIRE	168.0750N	114.8	170.4250N	114.8	A	FIRELINE TO ICP - EMERINE MT.
MEYERS	8	COMMAND								
MEYERS	9	COMMAND	CMD 5	S. OF THE FIRE	168.5750N	114.8	173.6750N	114.8	A	FIRELINE TO ICP - SENATE MT.
MEYERS	10	COMMAND	CMD 6	SE OF THE FIRE	173.0375N	114.8	167.3250N	114.8	A	FIRELINE TO ICP - TINY MT.
MEYERS	11	COMMAND	B-D / EMERINE	B-D FOREST NET	171.0000N		170.3500N	146.2	A	B-D FOREST NET BACKUP - EMERINE
MEYERS	12	TACTICAL	TAN	EMS	155.3400N		155.3400N	156.7	A	AIR AMBULANCE
MEYERS	13	TACTICAL	WHITE	EMS	155.2800N		155.2800N	156.7	A	GROUND AMBULANCE
MEYERS	14	AIR TO GROUND	AGG PRIMARY	ALL DIVISIONS	169.2000N		169.2000N		A	AIR TO GROUND PRIMARY
MEYERS	15	AIR TO GROUND	AGG SECONDARY	ALL DIVISIONS	164.7500N		164.7500N		A	AIR TO GROUND SECONDARY
MEYERS	16	AIR GUARD	AIRGUARD	ALL DIVISIONS	168.6250N		168.6250N	110.9	A	AIR EMERGENCY ONLY

5. Special Instructions:

COMMS TELEPHONE NUMBER 406-859-9099

6. Prepared By (Communications Unit Leader)	Name: RON REGAN
	Signature:

ICS 205	IAP Page	Date/Time: 09/12/2017 2100
---------	----------	----------------------------

INCIDENT RADIO COMMUNICATIONS PLAN (ICS 205)

1. Incident Name: MEYERS SAPPHIRE COMPLEX	2. Date/Time Prepared: Date: 09/12/2017 Time: 2100	3. Operational Period: 0700 - 2000 Date/Time From: 09/13/2017 0700 Date/Time To: 09/13/2017 2000 WED WED
---	---	--

Zone Group	Ch #	Function	Channel Name/Trunked Radio System Talkgroup	Assignment	RX Freq	RX Tone/NAC	TX Freq	TX Tone/NAC	Mode (A, D, or M)	Remarks
SAPPHIRE	1	TACTICAL	TAC 1	DIV G	168.0500N	123.0	168.0500N	123.0	A	BRANCH I
SAPPHIRE	2	TACTICAL	TAC 2	DIV Z AND NIGHT	168.2000N	123.0	168.2000N	123.0	A	LITTLE HOGBACK - BRANCH II
SAPPHIRE	3	TACTICAL	TAC 3	DIV N/O/P	168.6000N	123.0	168.6000N	123.0	A	LITTLE HOGBACK - BRANCH II
SAPPHIRE	4	TACTICAL	TAC 4	STAGING	168.7250N	123.0	168.7250N	123.0	A	LITTLE HOGBACK - BRANCH II
SAPPHIRE	5	TACTICAL	TAC 5	STRUCTURE	166.7750N	123.0	166.7750N	123.0	A	LITTLE HOGBACK - BRANCH II
SAPPHIRE	6	COMMAND	CMD 6	ALL DIVISIONS	170.4125N	123.0	165.9625N	123.0	A	CMD RPT FOR LITTLE HOGBACK FIRE - SOUTHWEST
SAPPHIRE	7	COMMAND	CMD 7	ALL DIVISIONS	168.1000N	123.0	170.4500N	123.0	A	CMD RPT FOR GOAT CREEK AND SLIDE ROCK FIRES - WEST
SAPPHIRE	8	COMMAND	CMD 8	ALL DIVISIONS	169.5375N	123.0	164.7125N	123.0	A	CMD RPT FOR LITTLE HOGBACK FIRE - WEST
SAPPHIRE	9	COMMAND	CMD 9	ALL DIVISIONS	166.3375N	123.0	170.3875N	123.0	A	CMD RPT FOR LITTLE HOGBACK FIRE - EAST
SAPPHIRE	10	COMMAND	CMD 10	ALL DIVISIONS	164.6750N	123.0	169.8125N	123.0	A	CMD RPT FOR GOAT CREEK AND SLIDE ROCK FIRES - EAST
SAPPHIRE	11	COMMAND	CMD 11	ALL DIVISIONS	171.0375N	123.0	163.8250N	123.0	A	SE END OF LITTLE HOGBACK
SAPPHIRE	12	TACTICAL	TAN	EMS	155.3400N	123.0	155.3400N	156.7	A	AIR AMBULANCE
SAPPHIRE	13	QUIGG RPT	QUIGG RPT	IA	164.7000N		164.1000N	131.8	A	LOLO FOREST RPT
SAPPHIRE	14	AIR TO GROUND	AG 1	AIR ATTACK	169.1500N		169.1500N		A	COMMUNICATE WITH AIR ATTACK
SAPPHIRE	15	AIR TO GROUND	AG 2	BRANCHES I AND II	169.0875N		169.0875N		A	
SAPPHIRE	16	AIR GUARD	AIRGRD	ALL DIVISIONS	168.6250N		168.6250N	110.9	A	AIR EMERGENCY OR INITIAL CONTACT

5. Special Instructions:
COMMS TELEPHONE NUMBER 406-859-9099

6. Prepared By (Communications Unit Leader) ICS 205	Name: RON REGAN
	Signature:
	Date/Time: 09/12/2017 2100

AIR OPERATIONS SUMMARY

Prepared By: Bart Kicklighter AOBD(T)

Prepared Date/Time: 9/12/2017 1800

1. INCIDENT NAME:	2. OPERATIONAL PERIOD DATE:	START TIME:	END TIME:	SUNRISE:	SUNSET:
Meyers Sapphire Complex	9/13/2017	700	2200	0708 @ Helibase	1950 @ Helibase

3. REMARKS (Safety Notes, Hazards): Secondary A/A used as assigned by Air Attack. Secondary A/G used as needed. **HOTSY BUCKET WASHOUT:** (1) Beaverhead-Deerlodge (Meyers and Sapphire): *When conducting buckets/snorkel work with Helicopters, ensure that only one water source is used at a time. If utilizing multiple water sources, ensure buckets/snorkels are washed between the use of different sources.* (2) LOLO PART OF SAPHIRE: Required when switching from one drainage to another (3) No wash required when switching dips while on the Bitterroot (4) Bucket wash when switching between Lolo or B-D and Bitterroot. (5) NEVER DIP FROM CLARK FORK.

4. READY ALERT AIRCRAFT Incident Medevac Resources:
 7HE AS350B3 (litter-capable) 407MC Bell 407 (backboard only)
 Litter Kit at Meyers HB
 SHORHAUL Order via A/C Desk.
 ** 401HQ @ Lincoln, MT
 ** Hoist/VVG: 429MJ Two Bear Air @ Kallispell
 A/C Medical (Tan): 155.3400N Tone TX 156.7
 A/G Hospital (White): 155.2800

5. Airspace Information:
 Sapphire TFR # 719864
 Freq: 118.2250
 Radius: POLYGON
 Altitude: 12,000 MSL
 Meyers TFR: 715927
 Freq: 121.0750
 Radius: POLYGON
 Altitude: 11,000

6. PERSONNEL	NAME	PHONE #	7. FREQUENCIES	VHF-AM	VHF-FM
6a. Sapphire Meyers Complex					
Air Ops Branch Director	Lynne Howard	678-699-3266	Sapphire A/G PRIMARY A/G 1		169.1500N
Air Ops Branch Director (Trainee)	Bart Kicklighter	828-460-6559	Sapphire A/G SECOND A/G 2		169.08750N
Air Support Group Supervisor	Teresa Williamson	720-537-4972	Sapphire A/A FW		118.2250
Air Tactical Group Supervisor	Dale Smith	406-291-6848	Sapphire A/A RW		123.4000
Air Ops Yurt Phone	AOBD/ASGS	406-859-9129			
6c. Common Ops Contacts					
Meyers Helibase Manager	Brad Bernardy	720-537-4928	Meyers A/G PRIMARY (A/G 1)		169.2000
Meyers Helibase Manager (Trainee)	Jeanne Bradley		Meyers A/G SECOND (A/G 2)		164.7500
Meyers Helibase Trailer Phone			Meyers A/A FW		121.0750
Mixmaster Miner Mud	Marty Posey	406-859-9133	Meyers A/A RW		126.6250
Missoula (Lolo NF)	A/C Desk	575-746-7320	Command - Helibase to ATGS		168.075 Rx - 170.425 Tx 114.8
Dillon (B-D NF)	A/C Desk	406-829-7060			
		406-683-3975/3827			
7c. Common Freqs					
			Deck		163.1000
			Takeoff/Landing (TOLC)		172.6500N
			National Fit Follow		168.6500 Tx/Rx 110.9
			Air Guard		168.625 TX 110.9
			DNRC A/G (Yellow)		166.9000N or 151.2200 Rx/Tx

Meyers ICP Fire Phone List
Southern Area Incident Management Team
Mike Dueitt - Incident Commander

POSITION	INCIDENT PHONE
Incident Commander	(406) 859-9101
Liaison Officer	(406) 859-9102
Safety Officer	(406) 859-9129
Public Information Officer	(406) 859-9107
Operations Section Chief	(406) 859-9129
Air Operations Branch Director	(406) 859-9129
Meyers Helibase	(406) 859-9133
Planning Section Chief	(406) 859-9106
Human Resource Specialist	(503) 307 8820
Logistics Section Chief	(406) 859-9103
Communications	(406) 859-9099
Facilities Unit Leader	(406) 859-9130
Ground Support	(406) 859-9097
Ground Support	(406) 859-9098
Medical Unit Leader	(406) 859-9100
Finance Section Chief	(406) 859-9092
Ordering Manager	(406) 859-9090
Ordering	(406) 859-9091
Resource Unit Leader	(406) 859-9129
Demob Unit Leader	(406) 859-9106
Security	(406) 859-9130
Plans FAX	(406) 859-9105



HEALTH AND SAFETY MESSAGE

“We don’t plan on luck to be safe, we plan on good risk management and good decisions”....the Red Team

INCIDENT: Meyers-Sapphire Complex

DATE: Wednesday, September 13th, 2017

Major Hazards and Risks: Driving, Fireline Adaptability, Cold Weather

Driving on the Incident – Forest System Roads in areas where personnel will be working can be narrow, winding with few wide spots and extremely dusty. ***Be alert*** for rock and other debris on the roads in burned areas. The County roads have good running surfaces that can result in ***excessive speeds***. Inattention, ***distracted driving***, or nodding off due to fatigue could easily result in tragedy. Keep your speeds down. ***Increase your following distance on dusty roads.***

Fireline Adaptability: Fire ***conditions and situations can change rapidly*** and often. Fire fighters must be able to adapt to changes in the plan, weather or fire behavior. With this in mind, ***flexibility is the key*** to continuing efforts in suppression operations.

Cold Weather: Now is the time to ***make preparations*** for you personal sleeping areas and gear. Keep your sleeping area and clothing dry at all times. ***Multiple layers of clothing*** will provide the most warmth and can be easily removed as temperatures rise.

Other: It has been a ***long season!*** – A ***person’s attitude*** plays a major role in **SAFETY!**
How’s Yours?

Look, Up, Down, and Around



6. INSTRUCTIONS AND ASSIGNMENTS NOT CLEAR

In Confusing and Uncertain Situations (Good Leaders)

- Motivate firefighters with a "can do safely" attitude
- Take Charge of resources
- Demonstrate Initiative by taking action in the absence of orders
- Communicate by giving specific instructions, getting feedback
- Supervise at the scene of action

Red Team Safety Officers: Tony Rivers (T), Larry Connell, Brad Lidell

MEDICAL PLAN (ICS 206 WF)

1. Incident/Project Name		2. Operational Period						
Meyers Sapphire Complex		Date/Time 9/13//2017 operational period						
3. Ambulance Services								
Name	Availability	Contact	Advanced Life Support (ALS)					
			Yes	No				
A-1 Ambulance Branch 1	Incident dedicated	Command channel	X					
Three Rivers Ambulance Branch 2	Incident dedicated	Command channel	X					
Granite, Ravalli and Deer Lodge County		911			X			
4. Air Ambulance Services								
Name	Phone	Type of Aircraft & Capability						
Air Idaho Rescue (West Yellowstone)	1-208-529-6340	Night Vision, ALS flight service, Tan. Ch 12						
Life Flight (Missoula and Butte)	911	Night vision, ALS transport, Frequency Tan. Ch 12						
Two Bear Air	911	Night vision, FLIR, hoist, can transport to ground unit or private aeromed unit. Frequency Tan. Ch 12						
5. Hospitals								
Name Complete Address	GPS Datum – WGS 84 Coordinate Standard Degrees Decimal Minutes DD° MM.MMM' N - Lat DD° MM.MMM' W - Long		Travel Time (from ICP)		Phone	Helipad		Level of Care Facility
	Lat:	Long:	Air	Ground		Yes	No	
St. Patrick's Hospital 500 W Broadway Missoula, MT	Lat: N 46° 52.551'	Long: W113° 59.986'	30 min	120 min	406-329-5635, Emergency Rm	Yes		Level 2 Trauma
Community Hospital of Anaconda 401 W Pennsylvania Anaconda, MT	Lat: N 46° 07.969'	Long: W112° 57.456'	15 mins	45 mins	406-563-8585 ER Emergency Rm	Yes roof & ground		Level 4 community trauma hospital
Granite County Medical Center 310 Sansome ST Philipsburg, Mt	Lat: N 46° 19.811'	Long: W113° 17.653'	15 min	30 min	406-859-3271	Yes		community hospital, no trauma designation
Marcus Daly Hospital 1200 Westwood dr Hamilton MT	Lat: N 46° 14.898'	Long: W 114° 10.32'		To India Spike 1.0 hrs	406-363-2211	Yes		Level 4 trauma
Special Notes								
The Medical unit will be open from 0530 – 2200. After hours, security can contact the incident ambulance and the MEDL in case of an emergency in camp or on the line.								
6. Division/Branch		Area Location Capability						
Division A/E Branch 3	EMS Responders & Capability:		A-1 Ambulance (ALS,BLS)					
	Equipment Available on Scene:		spine board, kit, oxygen					
	Medical Emergency Channel:		Command Channel					
	ETA for Ambulance to Scene:		5-10 min. *Stationed at Copper Creek CG*					
	Air/Ground:		A/G Primary 169.2000					
	Approved Helispots:		H8 , near DP 19					
	Lat:		N 45 59.963'					
	Long:		W113 31.708'					

MEDICAL PLAN (ICS 206 WF)


Branch 3 Division R/T/W	EMS Responders & Capability:	Chris Orr, EMTF			
	Equipment Available on Scene:	BLS Kit, SKED, AED, BLS			
	Medical Emergency Channel:	Tac on ground/Command Channel			
	ETA for Ambulance to Scene:	45 minutes			
	Air/Ground:	A/G Primary 169.2000			
	Approved Helispots:	H-18 , near DP28			
	Lat:	N 46° 08.610'			
	Long:	W 113° 36.45'			
Branch 3 Division I (India)	EMS Responders & Capability:	Olena Gartner, EMTF			
	Equipment Available on Scene:	BLS Kit, Spine Board, Oxygen			
	ETA for Ambulance to Scene:	1.0 hours			
	Air/Ground:	A/G primary			
	Approved Helispots:	H-31			
	Lat:	N 45° 54.340'			
	Long:	W113° 45.114'			
	Medical Emergency Channel:	Command,			
Branch 3 Division K	EMS Responders & Capability:	Melanie Miller, EMPF			
	Equipment Available on Scene:	ALS/BLS Kit, Sked, AED, O2			
	ETA for Ambulance to Scene:	45 min			
	Approved Helispot:	H- 10			
	Lat:	N46° 01.531'			
	Long:	W113° 39.998'			
	Medical Emergency Channel:	Command			
Branch 1 Division G (GOAT)	Point of Contact:	Greg Titus			
	EMS Responders & Capability:	Terry Williamson, AEMF			
	Equipment Available on Scene:	BLS, Trauma kit, O2, SKED			
	ETA for Ambulance to scene:	1 hr from Missoula			
	Air from Helibase:	15 min			
	Approved Helispot:	H-4			
	Lat:	N 46° 40.553			
	Long:	W 113° 35.817			
Branch 2 Division N	Point of Contact:	Alison Coons			
	EMS Responders & Capability:	Johanna Hyde, EMTF			
	Equipment Available on Scene:	BLS, Trauma kit, O2			
	ETA for Ambulance to Scene:	1hr from DP-49 (Three Rivers Ambulance)			
	Air from Helibase:	15 min			
	Approved Helispot:	H-14	H-15	H-16	Miner Mud
	Lat:	N46 31.110	N46 29.219	N46 26.120	N46 24.102
	Long:	W113 30.650	W113 30.981	W113 30.920	W113 30.278
Medical Emergency Channel:	Command				
Branch 2 Division O	Point of Contact:	Alison Coons			
	EMS Responders & Capability:	Johanna Hyde, EMTF			
	Equipment Available on Scene:	BLS, O2, Trauma kit, SKED			
	ETA for Ambulance to Scene:	30 min from DP-49 (Three Rivers Ambulance)			
	Air from Helibase:	15 min			
	Approved Helispot:	H-17		H-18	
	Lat:	N 46° 22.498		N 46° 21.505	
	Long:	W 113° 31.770		W 113° 32.533	
Medical Emergency Channel:	Command				

MEDICAL PLAN (ICS 206 WF)

Branch 2 Division P	Point of Contact:	Alison Coon	
	EMS Responders and Capability:	Gary Simpson, EMTF Three Rivers Ambulance (ALS, Paramedic)	
	Equipment Available on Scene:	BLS, ALS, Trauma gear, O2, AED	
	ETA for Ambulance:	30 min from DP-49 (Three Rivers)	
	Air from Helibase:	15min	
	Approved Helispot:	H-18	H-19
	Lat:	N 46° 21.505	N 46° 21.547
	Long:	W 113° 32.533	W 113° 33.252
	Medical Emergency Channel:	Command	
Branch 2 Division Z	Point of Contact:	Alison Coons	
	EMS Responders & Capability:	Rex Nielsen, EMPF	
	Equipment Available on scene:	ALS kit w/Meds, O2, SKED, AED	
	ETA for Ambulance:	30 min from ICP to DP-49 (Three Rivers)	
	Air from Helibase:	15 min	
	Approved Helispot:	H-21	
	Lat:	N 46° 24.623	
	Long:	W 113° 42.064	
	Medical Emergency Channel:	Command	
ICP	Ambulance:	Staged at DP-49 (Three Rivers)	
	EMS responders and capability	Dale Guynes, EMTB (BLS)	
	Equipment Available on Scene:	AED, medical unit supplies	
	Medical Emergency Channel:	Command Channel	
	ETA for Ambulance to Scene:	45 min	
	Approved Helispot:	Meyers Helibase	
	Lat:	N 46° 11.051'	
Long:	W 113° 29.571' elevation 6000'		

IWI IC Responsibilities:

- Take charge of the scene – inform the Division Supervisor and Communications that you are the IWI IC and establish radio communications (frequencies, channels). Identify the emergency name.
– e.g. (Division A medical, Fish Meadows medical, Highway 21 accident.)
- Assign or begin patient assessment (9 Line) and first aid. Request additional medical resources on division/branch or across incident. Transmit 9 Line patient information to Communications.
- Determine patient transportation through consultation with line medical personnel and Medical Unit Leader. Consider transportation time, risk to personnel, destination facility and available operational resources. If air transport is chosen, implement the plan for alternative transportation in the event aircraft cannot complete the mission. Order transportation resources through Communications as early as possible.
- Notify Communications as resources arrive and any patient status changes. Names of injured or deceased individuals will not be transmitted on the radio.
- Initiate documentation for future investigation; if a line safety officer is available, assign them to lead documentation. Do not move deceased individuals, gear or personal effects except to accomplish rescue work or protect the safety of others. Obtain written documentation of witnesses. The Unit Log, ICS 214, may be used for the initial documentation, but a subsequent narrative will be required.
- As appropriate, conduct an After Action Review to determine successes, areas to improve and lessons learned.

Prepared by (Medical Unit Leader)	Date/Time	I. Reviewed By (Safety Officer)	Date/Time
Fred Adler 479-238-6064	9/12/2017,	Tony Rivers SOF1 	9/12/17

TENTATIVE DEMOB 9/13-15

This is your demob day, NOT your last work day.

Your last work day is one day before demob.

See DMOB with questions.

MEYERS

9/13

O-637
O-592.39

(ATGS)
(MEDL)

MARS, LARRY V
ADLER, FREDERICK R

9/14

O-449.49

(TIME)

GAU, JUDY

9/15

O-564

(SEC2)

SIELIET, DELYN

SAPPHIRE

9/13

O-382
O-463
O-459

(RADO)
(PIOF)
(TFLD)

SCHULZ, NOAH JACOB
CROPP, MARY
KIERAN, PATRICK

9/14

O-218
O-472

(EMTF)
(SEC1)

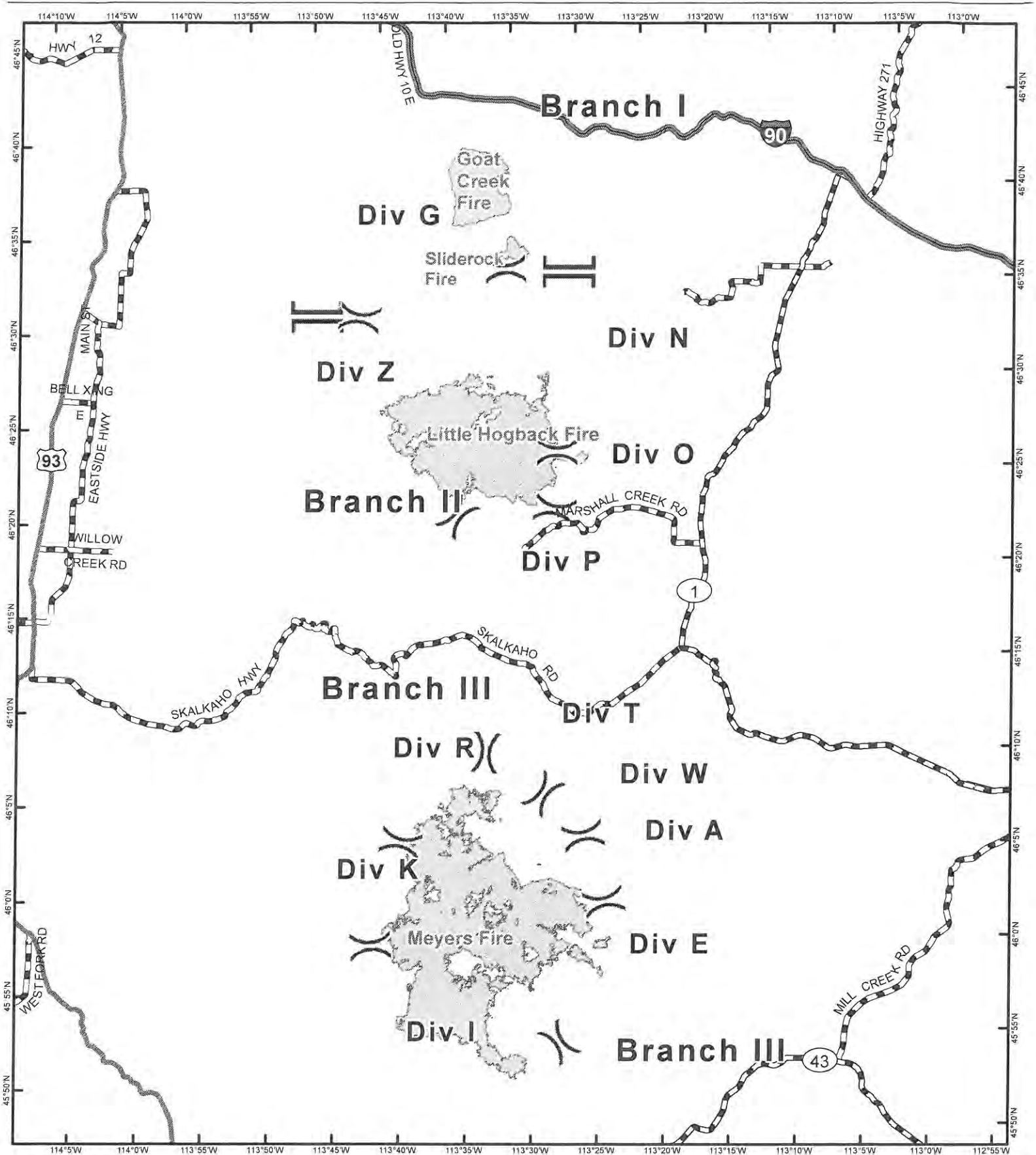
HYDE, JOHNNA DEE
HAYES, CALEB M

9/15

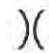


E-172

(PU)

Kevin D. Miller - EERA

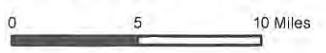


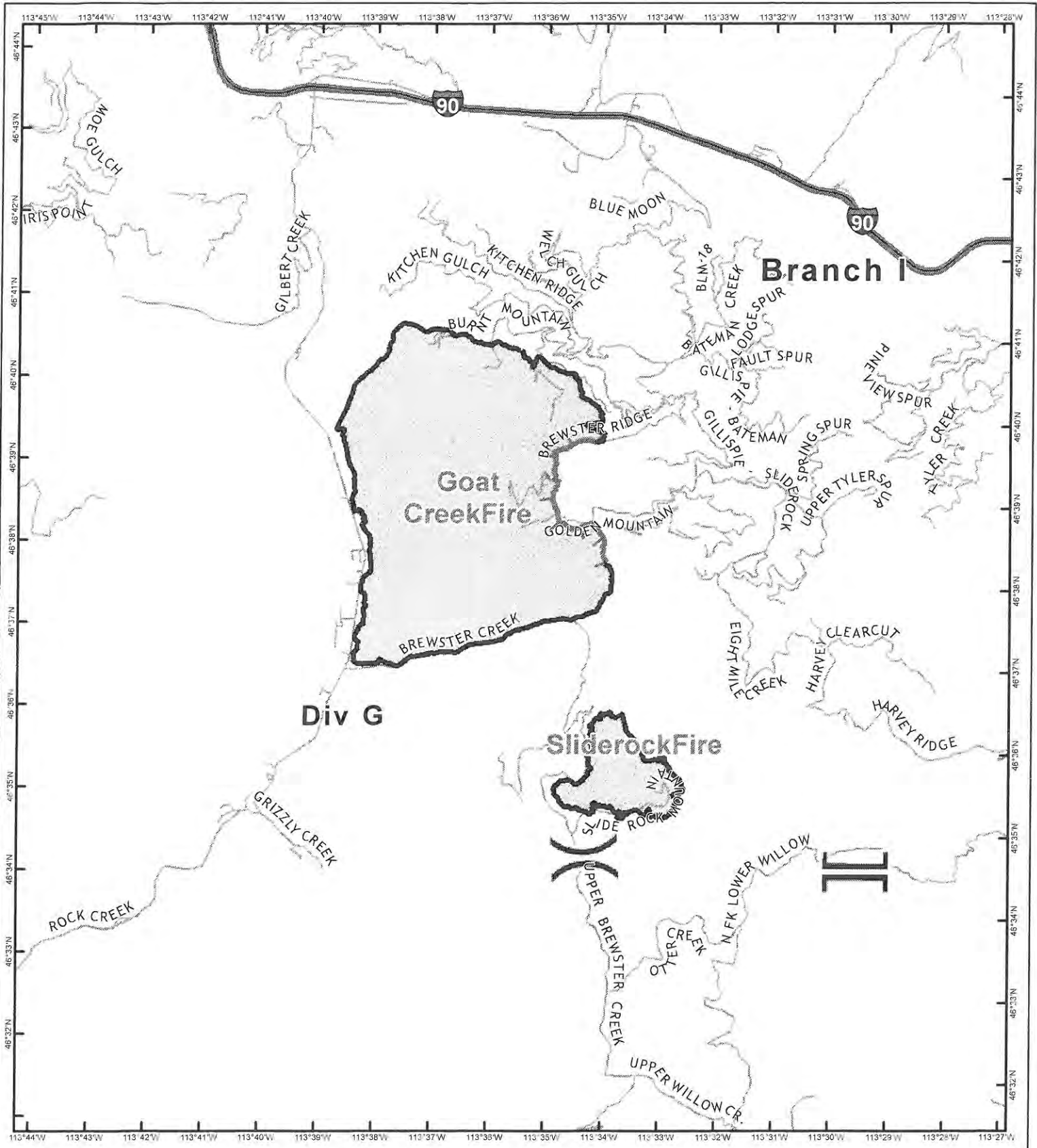
Meyers Sapphire Complex
 MT-BDF-002217
 9/13/2017
 IAP Map - Overview

-  Division Break
-  Branch Break
-  Fire Perimeter

Goat Creek: 8,300 ac
 Sliderock: 901 ac
 Little Hogback: 34,539 ac
 Meyers: 61,889 ac
 Total: 105,629 ac

Perimeter from
 September 12, 2017 @ 1830



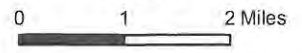


Meyers Sapphire Complex
MT-BDF-00217
9/13/2017

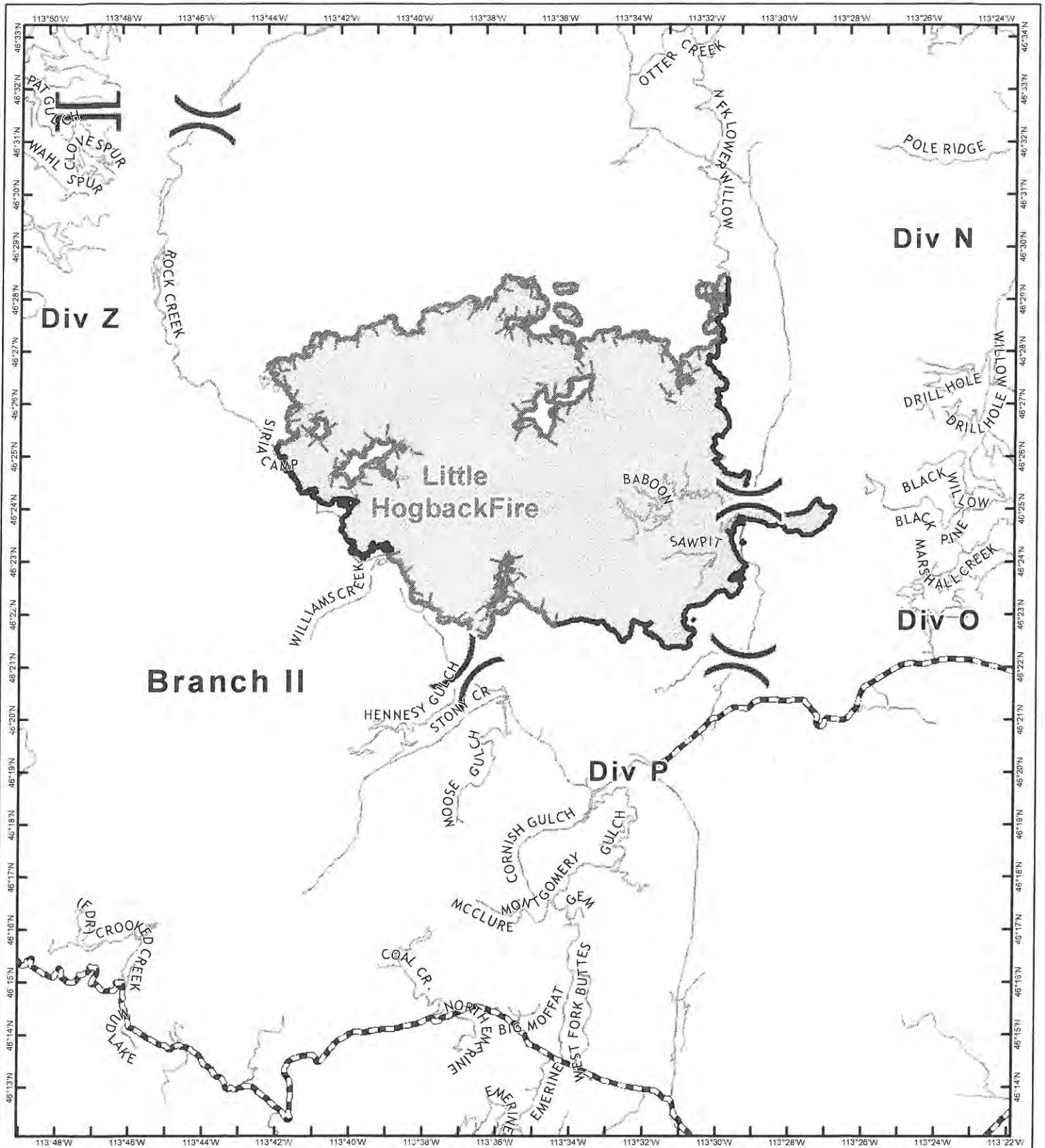
Branch I
 Goat Creek Fire: 8,300 ac
 Sliderock Fire: 901 ac

() Division Break
 || Branch Break

— Uncontrolled Fire Edge
 — Completed Line



Fire perimeter from 9/12/2017 @ 1830



Meyers Sapphire
Complex
MT-BDF-00217
9/13/2017

Branch II
Little Hogback Fire: 34,539 ac

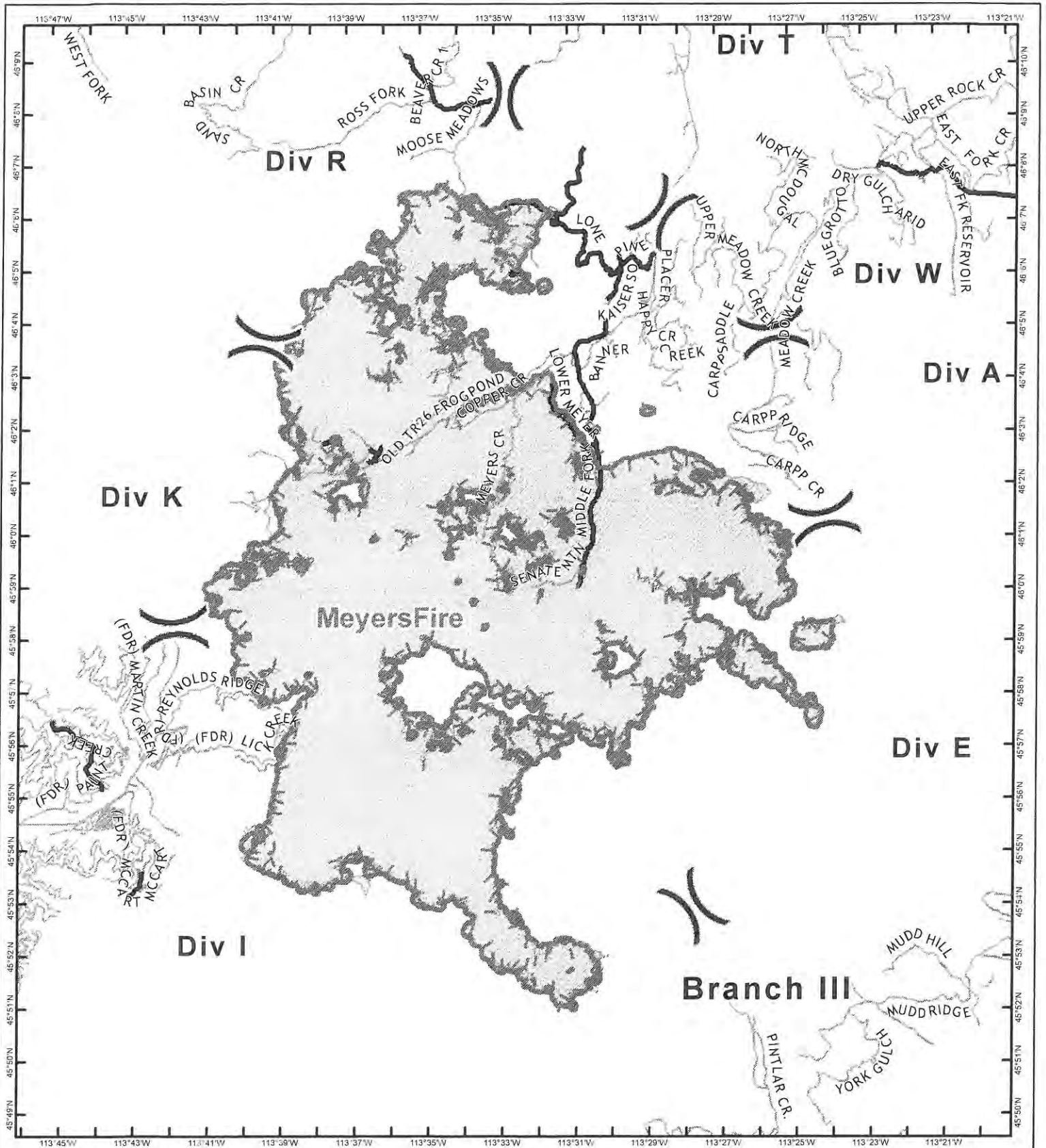
(X) Division Break
|| Branch Break

Uncontrolled Fire Edge
Completed Line





0 1 2 Miles



Fire perimeter from 9/12/2017 @ 1830



Meyers Sapphire Complex
MT-BDF-00217
9/13/2017

Branch III
 Meyers Fire: 61,889 ac

 Division Break
 Branch Break

 Uncontrolled Fire Edge
 Completed Line



Fire perimeter from 9/12/2017 @ 1830

MEDICAL PLAN (ICS 206 WF)

Medical Incident Report					
FOR ALL MEDICAL EMERGENCIES: IDENTIFY ON SCENE INCIDENT COMMANDER BY NAME AND POSITION AND ANNOUNCE "MEDICAL EMERGENCY" TO INITIATE RESPONSE FROM IMT COMMUNICATIONS/DISPATCH.					
Use items one through nine to communicate situation to communications/dispatch.					
1. CONTACT COMMUNICATIONS/DISPATCH <i>Ex: "Communications, Div. Alpha. Stand-by for Priority Medical Incident Report." (If life threatening request designated frequency be cleared for emergency traffic.)</i>					
2. INCIDENT STATUS: <i>Provide incident summary and command structure.</i>					
Nature of Injury/Illness			<i>Describe the injury</i> <i>(Ex: Broken leg with bleeding)</i>		
Incident Name			<i>Geographic Name + "Medical"</i> <i>(Ex: Trout Meadow Medical)</i>		
Point of Contact			<i>Name of Point of Contact</i>		
Patient Care			<i>Name of Care Provider</i> <i>(Ex: EMT Smith)</i>		
3. INITIAL PATIENT ASSESSMENT: <i>Complete this section for each patient. This is only a brief, initial assessment. Provide additional patient info after completing this 9 Line Report.</i>					
Number of Patients:	Male / Female	Age:	Weight:		
Conscious? <input type="checkbox"/> YES <input type="checkbox"/> NO = MEDEVAC!					
Breathing? <input type="checkbox"/> YES <input type="checkbox"/> NO = MEDEVAC!					
Mechanism of Injury: <i>What caused the injury?</i>					
Lat/Long (Datum WGS84) <i>Ex: N 40° 42.45' x W 123° 03.24'</i>					
4. SEVERITY OF EMERGENCY, TRANSPORT PRIORITY					
SEVERITY			TRANSPORT PRIORITY		
<input type="checkbox"/> URGENT-RED <i>Life threatening injury or illness.</i> <i>Ex: Unconscious, difficulty breathing, bleeding severely, 2° – 3° burns more than 4 palm sizes, heat stroke, disoriented.</i>			Ambulance or MEDEVAC helicopter. Evacuation need is IMMEDIATE.		
<input type="checkbox"/> PRIORITY-YELLOW <i>Serious Injury or illness.</i> <i>Ex: Significant trauma, not able to walk, 2° – 3° burns not more than 1-2 palm sizes.</i>			Ambulance or consider air transport if at remote location. Evacuation may be DELAYED.		
<input type="checkbox"/> ROUTINE-GREEN Not a life threatening injury or illness. <i>Ex: Sprains, strains, minor heat-related illness.</i>			Non-Emergency. Evacuation considered Routine of Convenience.		
5. TRANSPORT PLAN:					
Air Transport: (Agency Aircraft Preferred)					
<input type="checkbox"/> Helispot		<input type="checkbox"/> Short-haul/Hoist		<input type="checkbox"/> Life Flight	
				<input type="checkbox"/> Other	
Ground Transport:					
<input type="checkbox"/> Self-Extract		<input type="checkbox"/> Carry-Out		<input type="checkbox"/> Ambulance	
				<input type="checkbox"/> Other	
6. ADDITIONAL RESOURCE/EQUIPMENT NEEDS:					
<input type="checkbox"/> Paramedic/EMT(s)		<input type="checkbox"/> Crew(s)		<input type="checkbox"/> SKED/Backboard/C-Collar	
<input type="checkbox"/> Burn Sheet(s)		<input type="checkbox"/> Oxygen		<input type="checkbox"/> Trauma Bag	
<input type="checkbox"/> Medication(s)		<input type="checkbox"/> IV/Fluid(s)		<input type="checkbox"/> Cardiac Monitor/AED	
<input type="checkbox"/> Other (i.e. splints, rope rescue, wheeled litter)					
7. COMMUNICATIONS:					
Function	Channel Name/Number	Receive (Rx)	Tone/NAC *	Transmit (Tx)	Tone/NAC *
COMMAND					
AIR-TO-GRND					
TACTICAL					
*(NAC for digital radio system)					
8. EVACUATION LOCATION:					
Lat/Long (Datum WGS84) <i>EX: N 40 42.45' x W 123 03.24'</i>					
Patient's ETA to Evacuation Location:					
Helispot/Extraction Size and Hazards:					
9. CONTINGENCY:					
Considerations: <i>If primary options fail, what actions can be implemented in conjunction with primary evacuation method? Be thinking ahead...</i>				REMEMBER: <i>Confirm ETA's of resources ordered Act according to your level of training Be Alert. Keep Calm. Think Clearly. Act Decisively.</i>	