

Meyers Sapphire Complex

Incident Action Plan *Day*

Operational Period
September 14 - 16, 2017
0700 - 2000



QR for IAP



Meyers

MT-BDF-002217

USFS P1K7C417 (0102)

FWS FFF2000000K7C40

Sapphire Complex

MT-LNF-001463

USFS: P1K7XL17 (0116)

IDL: FED11417

FWS FFF2000000K7XL0

DNRC: 767012 DOI: K7XL

QR for Maps



Schedule

0700 Morning Briefing

0730 Radio Briefing -

1130 C&G

1800 Planning Meeting

1800 Night Briefing


1900 Plans Parts DUE




INCIDENT OBJECTIVES (ICS 202)

1. Incident Name:	2. Operational Period: 0700 - 2000	
MEYERS SAPPHIRE COMPLEX	Date/Time From: 09/14/2017 0700 THU	Date/Time To: 09/16/2017 2000 SAT
3. Objective(s):		
<p>1) Provide for life first of firefighters and public safety by following sound risk management protocols. Firefighter, public, and aviation safety is our priority in all fire management activities.</p> <p>2) Execute full suppression fire management strategies using direct, indirect, and/or zone protection tactics to guide fires in to man-made or natural barriers, while minimizing firefighter exposure and impacts to critical values at risk.</p> <p>Prioritize values at risk as follows: Private lands, infrastructure, grazing allotments, and natural, cultural, and heritage resources.</p> <p>Specific Values at Risk:</p> <ul style="list-style-type: none"> • Ravalli County: Martin Creek Campground, Billy Springer Memorial subdivision and Bonanza communities in the East Fork of the Bitterroot, and the proposed Meadow Vapor Timber Sale. • Granite County: Moose Lake, Frog Pond Basin, Senate Mountain, Ross Fork Area, East Fork Reservoir, and Georgetown Lake, Little Hogback, Upper Willow, and Lower Willow. • Deerlodge County: Fish Lake Area, and Pintler Face timber sale. <p>3) Provide initial attack support on the Lolo National Forest and initial attack response on Montana DNRC and Beaverhead-Deerlodge National Forest Protection within the Temporary Flight Restrictions (TFR)</p> <p>4) Coordinate suppression repair action with the assigned Resource Advisor prior to implementation.</p>		
4. Operational Period Command Emphasis:		
<p>5) Ensure timely and accurate dissemination and coordination of information regarding fire related activities is provided to the public, cooperators, elected official, and stakeholders.</p> <p>6) Contain costs by using the most cost effective method that does not jeopardize the safety of firefighters and the public.</p> <p>7) Enforce adequate standards to ensure that loss of accountable property and equipment is 6% or less.</p> <p>8) Manage the human resources assigned to the fire in a manner that promotes a positive and harassment free work environment and creates a "no tolerance" atmosphere for harassment, alcohol, or illegal drug use.</p>		
General Situational Awareness:		
See attached safety message		
5. Site Safety Plan Required? Yes <input type="checkbox"/> No <input checked="" type="checkbox"/>		
Approved Site Safety Plan(s) Located at:		
6. Incident Action Plan (the items checked below are included in this Incident Action Plan):		
<input checked="" type="checkbox"/> ICS 202	<input type="checkbox"/> ICS 207	Other Attachments:
<input checked="" type="checkbox"/> ICS 203	<input type="checkbox"/> ICS 208	<input type="checkbox"/> _____
<input checked="" type="checkbox"/> ICS 204	<input checked="" type="checkbox"/> ICS 220	<input type="checkbox"/> _____
<input checked="" type="checkbox"/> ICS 205	<input checked="" type="checkbox"/> Map/Chart	<input type="checkbox"/> _____
<input checked="" type="checkbox"/> ICS 205A	<input checked="" type="checkbox"/> Weather Forecast/Tides/Currents	<input type="checkbox"/> _____
<input checked="" type="checkbox"/> ICS 206		
7. Prepared by: TERRY PIERCE	Position/Title: PSC1	Signature:
8. Approved by Incident Commander:	Name: MIKE DUEITT	Signature: 
ICS 202	IAP Page	Date/Time: 09/13/2017 2100

ORGANIZATION ASSIGNMENT LIST (ICS 203)

1. Incident Name:		2. Operational Period: 0700 - 2000	
MEYERS SAPPHIRE COMPLEX		Date/Time From: 09/14/2017 0700 THU	Date/Time To: 09/16/2017 2000 SAT
3. Incident Commander(s) and Command Staff:		CHIEF	JOHNNY SMITH, RICK BARRETT (T)
IC/UC	MIKE DUEITT; MARK MORALES KYLE SMITH (T)	SERVICE BRANCH DIRECTOR	JOE WALKER
SAFETY OFFICER	LARRY CONNELL BRAD LIDELL, TONY RIVERS (T)	SUPPLY UNIT	MARK MORGAN
INFORMATION OFFICER	CATHERINE HIBBARD, JOE MAZZEO, JENI GARCIN (T)	FACILITIES UNIT	SUSANNE ADAMS, DAVID MOODY (T)
LIAISON OFFICER	PAUL STEVENS MIKE WRIGHT	GROUND SUPPORT UNIT	THOMAS "BO" SULLIVAN CHARLES REESE
		FOOD UNIT	JIM LOWE
		COMMUNICATIONS UNIT	JERRY PATRICK RON REGAN
		MEDICAL UNIT	BRAD BURNS (T)
4. Agency/Organization Representative(s):		ORDERING MANAGER	MAGGIE BELMORE, NINA GAINEY
Agency/Organization	Name	SECURITY MANAGER	SCOTT CARRIGAN
B-D NF	MELANY GLOSSA	7. Operations Section:	
B-D NF	ERIC TOMASIK	OPS SECTION CHIEF	PETER MYERS, DAVID WALKER
BNF	JULIE KING	PLANNING OPS	JAMIE SCHWARTZ, JEREMY BRAND (T)
BNF	ERIC WINTHERS	Branch	I
USFS - LOLO NF	JEN HENSICK CHRIS FURR	BRANCH DIRECTOR	JEFF SCHARDT
DNRC	BRIAN ROBBINS	DIVISION/GROUP	G JON MCLAUGHLIN JOHN FRY (T)
BLM	JOE ASHOR, STEVE HANCOCK	Branch	II
USFS - B-D NF	CAMERON RASOR	BRANCH DIRECTOR	JEFF SCHARDT
5. Planning Section:		DIVISION/GROUP	N/O/P GREG TITUS
CHIEF	TERRY PIERCE	DIVISION/GROUP	REHAB GROUP BERT PLANTE JON FRY (T)
RESOURCES UNIT	DONNA THOMAS, RICH R AUBUCHON BARRY FARRELL	DIVISION/GROUP	Z ALISON COONS
DEMOBILIZATION UNIT	MARG OLSON	DIVISION/GROUP	STAGING - LIL HOGBACK
SITUATION UNIT	MISSY FORDER (T)	Branch	III
ITSS	JOE ASHBY, TONY FARMER	DIVISION/GROUP	A/E JOE BURGETT
GIS SPECIALIST	ANDREW THOMPSON, DAVID JONES MATT DISKINS, CHRISTIN VOSE (T)	DIVISION/GROUP	I J. BRAND, J RUPP (T)
FIRE BEHAVIOR ANALYST	BRUCE DAVENPORT BRENDA DALE (T)	DIVISION/GROUP	K SHANE STURGILL
INCIDENT METEOROLOGIST	MARK STUBBLEFIELD	DIVISION/GROUP	R/T BRIAN BROWNING, JACOB JERESEK (T)
TRAINING SPECIALIST	KELLY BALCARGZYK (T)	DIVISION/GROUP	W KELLY CORNWALL
HUMAN RESOURCE SPECIALIST	LINDA BUCK K. CAHOON (T)	7b. Air Operations Branch:	
DOCUMENTATION UNIT	PATRICK MCKNIGHT	AIR OPS BRANCH DIRECTOR	LYNNE HOWARD, BART KICKLIGHTER (T)
READ - BDNF	RYAN POWELL	HELIBASE MANAGER	BRAD BERNARDY
READ - BNF	RYAN HUGHES	AIR SUPPORT SUPERVISOR	TERESA L WILLIAMSON
BLM READ	LEA TUTTLE		
B-D READ	WADE JEROME		
LOLO READ	KATE ARENDT		
6. Logistics Section:			
9. Prepared By:	Name: DONNA THOMAS	Position/Title: RESL	Signature:
ICS 203	IAP Page	Date/Time: 09/13/2017 2100	

ORGANIZATION ASSIGNMENT LIST (ICS 203)

1. Incident Name:		2. Operational Period: 0700 - 2000	
MEYERS SAPPHIRE COMPLEX		Date/Time From: 09/14/2017 0700 THU	Date/Time To: 09/16/2017 2000 SAT
8. Finance/Administration Section:			
CHIEF	BONNY JOHNSON		
DEPUTY	SANDRA MORRIS, JENNY CROSS (T)		
COMPENSATION UNIT	ALICE BARNETTE DORIS DOSTER		
COST UNIT	HELEN CZERNIK		
TIME UNIT	JEAN FRICK JUDY GAU (T)		
9. Prepared By:	Name: DONNA THOMAS	Position/Title: RESL	Signature:
ICS 203	IAP Page	Date/Time: 09/13/2017 2100	



FIRE WEATHER FORECAST



Forecast No. 53

Name of Fire: Meyers Sapphire Complex

Prediction for: Day Shift

Unit: Beaverhead-Deer Lodge National Forest

Shift Date: 09/14/17 Thursday

Time & Date Issued: 1700 MDT 09/12/17

Signed: Mark Stubblefield, IMET *ms*

Weather Discussion: An area of low pressure moving out of Canada will settle over the area into Saturday. The chances of precipitation will increase this morning becoming continuous late today into Saturday morning. The snow level will drop to around 9000 feet by this evening and will likely reach 5500 feet by Friday afternoon. A winter storm watch has been issued above 6000 feet from 2100 Thursday through 0600 Saturday.

Today...

Weather & Sky: Showers in the morning becoming steady rain by afternoon.

Meyers Fire: (6000 to 8500 feet):

Max Temp: 43 to 50°F (Trend: down 25)

Min Humidity: 70 to 75%. (Trend: up 50)

Hogback Fire: (4000-6000 feet):

Max Temp: Valleys 48 to 56°F

Min RH: Valleys 55 to 60%

Valley Wind (20 Ft): variable to 5 MPH becoming east 8 to 12 MPH in the afternoon.

Transport winds: NE 12 MPH. Mixing Height: 8000 MSL

Ridgetop Wind (20 Ft): Southwest 5 to 10 MPH...becoming east 10 to 15 MPH late in the afternoon.

Haines Index: 2 (very low) LAL: 1

Tonight...

Weather & Sky: Rain with lowering snow levels. (8000 feet by midnight and 7500 feet by daybreak).

Meyers Fire: (6000 to 8500 feet):

Min Temp: 35 to 40°F.

Max Humidity: 90 to 100%.

Hogback Fire: (4000-6000 feet):

Min Temp: 38 to 45°F.

Max RH: 90 to 100%.

Winds (20 Foot): East 8 to 12 MPH.

Outlook for Friday... Windy. Cold. Rain with lowering snow levels. 6500 feet by 1000 and 5500 feet by 1400. Max Temp 38 to 48 F, Min RH 70 to 80%. 20-ft Winds NE 15 to 25 MPH. Mixing level 13,000 MSL
Transport winds: NE 20 MPH. Haines Index: 2 (very low). Ridgetop Wind (20 Ft): Northeast 25 to 35 MPH.

Extended Outlook Saturday through Monday

	<u>Max T</u>	<u>Min RH</u>	<u>1500 Wind Dir</u>	<u>1500 Wind spd</u>	<u>Sky / Precipitation</u>
<u>Saturday</u>	40 to 50	60%	SW	8 MPH	Snow showers early...then chance of showers.
<u>Sunday</u>	55 to 65	40%	SW	15 MPH	Slight chance of showers.
<u>Monday</u>	60 to 70	50%	SW	18 MPH	Chance of rain. Chance of snow above 8000 feet.

FIRE BEHAVIOR FORECAST

FORECAST NUMBER: 53	TYPE OF FIRE: Wildfire
FIRE NAME: Meyers & Sapphire Complex	OPERATIONAL PERIOD: Day 09/14/2017 Thursday
DATE ISSUED: 09/13/2017	TIME ISSUED: 1700 <i>Brenda Dale</i>
UNIT: MT-BDF	PREPARED BY: Bruce Davenport FBAN/Brenda Dale FBANt

INPUTS

WEATHER SUMMARY:

Temps: Meyers 43-50°F Hogback 48-56°F **RH:** Meyers 70-75% Hogback 55-60% **Valley Winds:** variable direction in the morning becoming East 8-12 mph in afternoon **Ridgetop Winds:** SW 5 to 15 **Haines Index:** 2

OUTPUTS – FIRE BEHAVIOR

General:

Meyers Fire & Little Hogback Fire: Cold temperatures, high humidity and wetting rains will markedly decrease fire behavior. Fire will continue to smolder in the very dry heavy fuels and duff. There may be isolated single tree torching when associated with a jackpot of surface fuels. Only 1 out of 6 embers that land on receptive fuels will start a spot fire.

SPECIFIC:

FUELS: Mixed conifer forest dominated by lodgepole pine, subalpine fir, Engelmann spruce, and Douglas-fir, with isolated pockets of whitebark pine on ridgetops.

Fuel Size

Time lag	Fuel diameter
1-hour (fine fuels)	<¼ inch (twigs, dead grass, leaves, needles)
10-hour	¼-1 inch (twigs, small branches, cones)
100-hour	1-3 inch (branches, tops)
1000-hour	>3 inch (large branches, tops, logs)

- Beetle-killed lodgepole pine makes up 20-40% of forest canopy in the fire area.
- Heavy dead/down fuels loads are from bug kill, previous wildfires and decadent forests. Recent fire scars are generally inhibiting surface spread where present.
- On the Meyers Fire, valley bottom forests, wet meadows and drainages are green and will discourage surface fire spread.

1 Hour Fuels 11-13%; Live Woody Fuels and 1000 hour fuel moistures have not changed, they are VERY DRY.

Timelag is an indication of the rate fuel gains or loses moisture due to changes in its environment. The value is expressed as the rate (hours) at which the fuel type approaches the moisture equilibrium of its surrounding atmosphere.

Output Variable (Head Fire)	Meyers Fire	Little Hogback Fire	
	Timber Fuel Model (FM10 (80%) and TU2 (20%))	Grass/Sage (GS2)	Lodgepole Pine/Fir/Spruce (FM8 (60%) & FM10 (40%))
Surface Rate of Spread (ch/hr)	6-13	5-15	7-18
Flame Length (Feet)	4-6	1-2	4-7
Probability of Ignition (%)	15	19	19
Spotting Distance (miles)	.2-.4	.1-.4	.1-.4

AIR OPERATIONS: Weakness or absence of inversion may facilitate earlier aviation use.

SAFETY: *Watch Your Step!* Ash pits are created when ground fire consumes underground fuels creating an empty space that is imperceptible from the surface.

Division/Group Assignment List (ICS 204 WF)

1. Incident Name:			3.			
MEYERS SAPPHIRE COMPLEX			Branch:		Division/Group:	
2. Operational Period: 0700 - 2000			I		G	
Date/Time From: 09/14/2017 0700 THU		Date/Time To: 09/16/2017 2000 SAT				
4. Operations Personnel						
OPERATIONS CHIEF		PETER MYERS, DAVID WALKER		BRANCH DIRECTOR		JEFF SCHARDT
PLANNING OPS		JAMIE SCHWARTZ, JEREMY BRAND (T)		DIVISION/GROUP SUPERVISOR		JON MCLAUGHLIN
				AIR OPERATIONS DIRECTOR		LYNNE HOWARD BART KICKLIGHTER (T)
5. Resources Assigned this Period						
Strike Team / Task Force / Resource Designator		LWD	Leader	Number Persons	Drop Off PT./Time	Pick Up PT./Time
TFLD		09/18	TONY BALLOU	1	GOAT SPIKE /0700	GOAT SPIKE/2000
TFLD		09/18	KEITH HALLORAN	1	GOAT SPIKE /0700	GOAT SPIKE/2000
HEQB		09/18	ARIC RASMUSSEN	1	GOAT SPIKE /0700	GOAT SPIKE/2000
E-930 ENG3		09/18	TRENTON DOUGLAS	4	GOAT SPIKE /0700	GOAT SPIKE/2000
E-482 ENG3		09/18	BRIAN REES	3	GOAT SPIKE /0700	GOAT SPIKE/2000
E-187 ENG6 NORTH IDAHO FIRE		09/15	JOHN LAUTENSLAGER	3	GOAT SPIKE /0700	GOAT SPIKE/2000
E-44 SKG3 SLACK		09/15	JAMIE SLACK	1	GOAT SPIKE /0700	GOAT SPIKE/2000
E-232 EXCA T2 WELCH BROS W/LOWBOY		09/25	FRANK COSANA	2	GOAT SPIKE /0700	GOAT SPIKE/2000
E-258 EXCA FAUST INC		09/16	BILL NELSON	2	GOAT SPIKE /0700	GOAT SPIKE/2000
0-415 SOF2 (T)		09/18	WESTON BURCH	1	GOAT SPIKE/0700	GOAT SPIKE/2000
6. Control Operations/Work Assignments:						
Task: Implement suppression rehab on north and east ends of Goat Creek Fire. Mop up all potential threatening hot spots along the fire edge on the east side of Goat Creek.						
Purpose: Minimize acres burned on Division G and complete suppression rehab.						
End State: Execute full suppression fire management strategies using direct protection strategies. Complete fire suppression rehab while minimizing exposure and impacts to critical values at risk.						
7. Special Instructions:						
8. Division/Group Communication Summary						
Function	Channel	RX Frequency N/W	RX Tone/NAC	TX Frequency N/W	TX Tone/NAC	Mode
COMMAND	10	164.6750N	123.0	169.8125N	123.0	A
TACTICAL	1	168.0500N	123.0	168.0500N	123.0	A
AIR TO GROUND	14	169.1500N		169.1500N		A
AIR TO GROUND	15	169.0875N		169.0875N		A
AIR GUARD	16	168.6250N		168.6250N	110.9	
9. Prepared By (Resource Unit Leader)			Approved By (Planning Section Chief)		Date	Time
DONNA THOMAS - RESL			TERRY PIERCE - PSC <i>T. Pierce</i>		09/13/2017	0830

Division/Group Assignment List (ICS 204 WF)

1. Incident Name:			3.			
MEYERS SAPPHIRE COMPLEX			Branch:		Division/Group:	
2. Operational Period: 0700 - 2000			I		G	
Date/Time From: 09/14/2017 0700 THU		Date/Time To: 09/16/2017 2000 SAT				
4. Operations Personnel						
OPERATIONS CHIEF		PETER MYERS, DAVID WALKER		BRANCH DIRECTOR JEFF SCHARDT		
PLANNING OPS		JAMIE SCHWARTZ, JEREMY BRAND (T)		DIVISION/GROUP SUPERVISOR JON MCLAUGHLIN		
				AIR OPERATIONS DIRECTOR LYNNE HOWARD BART KICKLIGHTER (T)		
7. Special Instructions:						
Complete maintenance of equipment as appropriate and maintain readiness to engage as directed by operations.						
8. Division/Group Communication Summary						
Function	Channel	RX Frequency N/W	RX Tone/NAC	TX Frequency N/W	TX Tone/NAC	Mode
COMMAND	10	164.6750N	123.0	169.8125N	123.0	A
TACTICAL	1	168.0500N	123.0	168.0500N	123.0	A
AIR TO GROUND	14	169.1500N		169.1500N		A
AIR TO GROUND	15	169.0875N		169.0875N		A
AIR GUARD	16	168.6250N		168.6250N	110.9	
9. Prepared By (Resource Unit Leader)			Approved By (Planning Section Chief)		Date	Time
DONNA THOMAS - RESL			TERRY PIERCE - PSC1 <i>T. Pierce</i>		09/13/2017	0830

Division/Group Assignment List (ICS 204 WF)

1. Incident Name:			3.			
MEYERS SAPPHIRE COMPLEX			Branch:		Division/Group:	
2. Operational Period: 0700 - 2000			II		N/O/P	
Date/Time From: 09/14/2017 0700 THU	Date/Time To: 09/16/2017 2000 SAT					
4. Operations Personnel						
OPERATIONS CHIEF		PETER L MYERS DAVID P WALKER		DIVISION/GROUP SUPERVISOR		GREG TITUS
PLANNING OPS		JAMIE SCHWARTZ, JEREMY BRAND (T)		AIR OPERATIONS DIRECTOR		LYNNE HOWARD BART KICKLIGHTER (T)
5. Resources Assigned this Period						
Strike Team / Task Force / Resource Designator		LWD	Leader	Number Persons	Drop Off PT./Time	Pick Up PT./Time
O-740 TFLD		09/27	JORDAN BLACK	1	MEYERS ICP/0700	MEYERS ICP/2000
O-388 TFLD (T)		09/22	LUCAS HARLEY	1	MEYERS ICP/0700	MEYERS ICP/2000
E-158 EN6 METAL WORKS		09/24	RICK MANCHESTER	3	MEYERS ICP/0700	MEYERS ICP/2000
E-125 WTT2 R&J GRANGER		09/24	RON GRANGER	1	MEYERS ICP/0700	MEYERS ICP/2000
E-79 WTT2 MISSION MTN STAR		09/22	SCOTT HARMON	1	MEYERS ICP/0700	MEYERS ICP/2000
O-488 AMTF		09/24	TERRY WILLIAMS	1	MEYERS ICP/0700	MEYERS ICP/2000
O-704 EMTF		09/24	GARY SIMPSON	1	MEYERS ICP/0700	MEYERS ICP/2000
E-3 AMBU THREE RIVERS		10/01	WESTGARD & HAGESTAD	2	MEYERS ICP/0700	MEYERS ICP/2000
6. Control Operations/Work Assignments:						
Task: Patrol and mop-up along fire edge. Provide support to other divisions as necessary. Work with READ to identify suppression repair needs.						
Purpose: Minimize acres burned and impacts to resources at risk.						
End State: Execute full suppression. Keep fire north of Rock Creek and west of Upper Willow Creek.						
7. Special Instructions:						
Identify and remove excess equipment and back haul as appropriate.						
8. Division/Group Communication Summary						
Function	Channel	RX Frequency N/W	RX Tone/NAC	TX Frequency N/W	TX Tone/NAC	Mode
COMMAND	9	166.3375N	123.0	170.3875N	123.0	A
TACTICAL	3	168.6000N	123.0	168.6000N	123.0	A
AIR TO GROUND	14	169.1500N		169.1500N		A
AIR TO GROUND	15	169.0875N		169.0875N		A
AIR GUARD	16	168.6250N		168.6250N	110.9	
9. Prepared By (Resource Unit Leader)			Approved By (Planning Section Chief)		Date	Time
DONNA THOMAS - RESL			TERRY PIERCE - PSC1 <i>T. Pierce</i>		09/13/2017	0830

Division/Group Assignment List (ICS 204 WF)

1. Incident Name:			3.			
MEYERS SAPPHIRE COMPLEX			Branch:		Division/Group:	
2. Operational Period: 0700 - 2000			II		REHAB GROUP	
Date/Time From: 09/14/2017 0700 THU		Date/Time To: 09/16/2017 2000 SAT				
4. Operations Personnel						
OPERATIONS CHIEF		PETER MYERS DAVID WALKER		DIVISION/GROUP SUPERVISOR		
PLANNING OPS		JAMIE SCHWARTZ JEREMY BRAND (T)		AIR OPERATIONS DIRECTOR		
				BERT PLANTE JON FRY (T)		
				LYNNE HOWARD BART KICKLIGHTER (T)		
5. Resources Assigned this Period						
Strike Team / Task Force / Resource Designator		LWD	Leader	Number Persons	Drop Off PT./Time	Pick Up PT./Time
O-451 HEQB		09/23	ANTHONY MOORE	2	MEYERS ICP/0700	MEYERS ICP/2200
O-529 HEQB (T)		09/23	JASON WALKER	1	MEYERS ICP/0700	MEYERS ICP/2200
O-122 FAL 1 TIMBER TRAIL		09/18	SEITZ & CHITWOOD	2	MEYERS ICP/0700	MEYERS ICP/2200
O-726 ICPI (T)		09/24	TAMARA MAIOLIE	1	MEYERS ICP/0700	MEYERS ICP/2200
E-190 WTS2 CASTLE MTN FIRE		09/21	BOB BASTRUP	1	MEYERS ICP/0700	MEYERS ICP/2200
E-192 WTS2 BIRD WATER #8		09/16	RAY CONGDON	1	MEYERS ICP/0700	MEYERS ICP/2200
E-243 EXCA T1 ST ONGE W/LOWBOY		09/17	EVAN SIPPL	2	MEYERS ICP/0700	MEYERS ICP/2200
E-420 EXCA T1 W/LOWBOY		09/26	KELLY BROWN	2	MEYERS ICP/0700	MEYERS ICP/2200
E-261 EXCA LITTLE BEAR CONSTRUCTION W/LOWBOY		09/20	MIKE HILL	1	MEYERS ICP/0700	MEYERS ICP/2200
E-419 EXCA T2		09/27	DOUG CROCKETT	1	MEYERS ICP/0700	MEYERS ICP/2200
E-40 SKDS HALL WOOD PROCESSING		09/24	JEFF WEER	1	MEYERS ICP/0700	MEYERS ICP/2200
E-177 SKG2		09/23	ANDY JOHNSON	2	MEYERS ICP/0700	MEYERS ICP/2200
E-242 LOG TRUCK JOE THOMAS		09/14	JOE THOMAS	1	MEYERS ICP/0700	MEYERS ICP/2200
E-260 SELF LOADING LOG TRUCK		09/17	JUSTIN HULFORD	1	MEYERS ICP/0700	MEYERS ICP/2200
E-251 LOG LOADER BRYANT W/LOWBOY		09/14	BRYCE RASMUSSEN	2	MEYERS ICP/0700	MEYERS ICP/2200
E-263 LOG LOADER RUSS REED LOGGING W/LOWBOY		09/20	STEVE KINZEL	2	MEYERS ICP/0700	MEYERS ICP/2200
E-267 DUMP TRUCK ALL TERRAIN TRUCKING		09/21	JOHNNY BAUER	1	MEYERS ICP/0700	MEYERS ICP/2200
6. Control Operations/Work Assignments:						
8. Division/Group Communication Summary						
Function	Channel	RX Frequency N/W	RX Tone/NAC	TX Frequency N/W	TX Tone/NAC	Mode
COMMAND	8	169.5375N	123.0	164.7125N	123.0	A
COMMAND	9	166.3375N	123.0	170.3875N	123.0	A
TACTICAL	5	166.7750N	123.0	166.7750N	123.0	A
AIR TO GROUND	14	169.1500N		169.1500N		A
AIR TO GROUND	15	169.0875N		169.0875N		A
AIR GUARD	16	168.6250N		168.6250N	110.9	A
9. Prepared By (Resource Unit Leader)			Approved By (Planning Section Chief)		Date	Time
DONNA THOMAS - RESL			TERRY PIERCE - PSC1 <i>T. Pierce</i>		09/13/2017	2100

Division/Group Assignment List (ICS 204 WF)

1. Incident Name:				3.			
MEYERS SAPPHIRE COMPLEX				II		REHAB GROUP	
2. Operational Period: 0700 - 2000							
Date/Time From: 09/14/2017 0700 THU		Date/Time To: 09/16/2017 2000 SAT					
4. Operations Personnel							
OPERATIONS CHIEF		PETER MYERS DAVID WALKER		DIVISION/GROUP SUPERVISOR		BERT PLANTE JON FRY (T)	
PLANNING OPS		JAMIE SCHWARTZ JEREMY BRAND (T)		AIR OPERATIONS DIRECTOR		LYNNE HOWARD BART KICKLIGHTER (T)	
6. Control Operations/Work Assignments:							
Task: Implement suppression rehab north of H-15 including east west lateral constructed lines north of Hogback fire.							
Purpose: Complete fire suppression rehab.							
End State: Complete fire suppression rehab.							
7. Special Instructions:							
Identify and map structures. Work with liaison Officer to advise and coordinate with with potentially affected private landowners. Gather GPS tracks of all constructed line in Division and turn into the Situation Unit.							
Specific hazard mitigations:							
<ul style="list-style-type: none"> ▪ Review the Wildland Urban interface "watch out" situations on page 12 of the IRPG. ▪ For IA, establish LCES and determine trigger points. 							
8. Division/Group Communication Summary							
Function	Channel	RX Frequency N/W	RX Tone/NAC	TX Frequency N/W	TX Tone/NAC	Mode	
COMMAND	8	169.5375N	123.0	164.7125N	123.0	A	
COMMAND	9	166.3375N	123.0	170.3875N	123.0	A	
TACTICAL	5	166.7750N	123.0	166.7750N	123.0	A	
AIR TO GROUND	14	169.1500N		169.1500N		A	
AIR TO GROUND	15	169.0875N		169.0875N		A	
AIR GUARD	16	168.6250N		168.6250N	110.9	A	
9. Prepared By (Resource Unit Leader)			Approved By (Planning Section Chief)			Date	Time
DONNA THOMAS - RESL			TERRY PIERCE - PSC1			09/13/2017	2100

Division/Group Assignment List (ICS 204 WF)

1. Incident Name:			3.			
MEYERS SAPPHIRE COMPLEX			Branch:		Division/Group:	
2. Operational Period: 0700 - 2000			II		Z	
Date/Time From: 09/14/2017 0700 THU		Date/Time To: 09/16/2017 2000 SAT				
4. Operations Personnel						
OPERATIONS CHIEF		PETER MYERS DAVID WALKER		DIVISION/GROUP SUPERVISOR		ALISON COONS
PLANNING OPS		JAMIE SCHWARTZ JEREMY BRAND (T)		AIR OPERATIONS DIRECTOR		LYNNE HOWARD BART KICKLIGHTER (T)
5. Resources Assigned this Period						
Strike Team / Task Force / Resource Designator		LWD	Leader	Number Persons	Drop Off PT./Time	Pick Up PT./Time
O-244 TFLD		09/23	DAN WHITE	1	MEYERS ICP/0700	MEYERS ICP/2000
E-234.1 TFLD (T)		09/16	JOSH STROHMEYER	1	MEYERS ICP/0700	MEYERS ICP/2000
O-460 TFLD (T)		09/20	TODD AYRES	1	MEYERS ICP/0700	MEYERS ICP/2000
E-46 ENG3 HART VENTURES 414253		09/25	A.S. KLOTZ	3	MEYERS ICP/0700	MEYERS ICP/2000
E-48 ENG4 ALDER CREEK		09/24	BOYD CARR	3	MEYERS ICP/0700	MEYERS ICP/2000
E-45 ENG4 INLAND FOREST MGMT		09/24	CHRIS TERWILLIGER	3	MEYERS ICP/0700	MEYERS ICP/2000
E-124 ENG4 OUTBACK FIREFIGHTING		09/20	KARL PESO	3	MEYERS ICP/0700	MEYERS ICP/2000
E-189 ENG4 NATIONAL WILDLAND FIRE		09/19	LEENKUN BACA	3	MEYERS ICP/0700	MEYERS ICP/2000
E-30 ENG6 RED TRUCK WILDFIRE		09/16	RAY BROWN	3	MEYERS ICP/0700	MEYERS ICP/2000
E-234 ENG6 IL-MPF		09/16	SHAUN TRABADO	4	MEYERS ICP/0700	MEYERS ICP/2000
E-122 ENG6 GRIZ ONE		09/21	BOB RAADE	3	MEYERS ICP/0700	MEYERS ICP/2000
E-132 WTS2 PRIMMER TENDER		09/14	REBECCA DAUL	1	MEYERS ICP/0700	MEYERS ICP/2000
E-133 WTS2 BUTLER ENTERPRISES		09/26	NICK DOLE	1	MEYERS ICP/0700	MEYERS ICP/2000
E-70 DOZ2 MADDEN TRUCKING		09/15	MOSES MADDEN	2	MEYERS ICP/0700	MEYERS ICP/2000
E-178 SKG2 SOFT TRACK ATTACK #2		09/18	TIM HEATS	2	MEYERS ICP/0700	MEYERS ICP/2000
8. Division/Group Communication Summary						
Function	Channel	RX Frequency N/W	RX Tone/NAC	TX Frequency N/W	TX Tone/NAC	Mode
COMMAND	6	170.4125N	123.0	165.9625N	123.0	A
COMMAND	8	169.5375N	123.0	164.7125N	123.0	A
COMMAND	11	171.0375N	123.0	163.8250N	123.0	A
TACTICAL	2	168.2000N	123.0	168.2000N	123.0	A
AIR TO GROUND	14	169.1500N		169.1500N		A
AIR TO GROUND	15	169.0875N		169.0875N		A
AIR GUARD	16	168.6250N		168.6250N	110.9	
9. Prepared By (Resource Unit Leader)			Approved By (Planning Section Chief)		Date	Time
DONNA THOMAS - RESL			TERRY PIERCE - PSC1 <i>T. Pierce</i>		09/13/2017	2100

Division/Group Assignment List (ICS 204 WF)

1. Incident Name:			3.			
MEYERS SAPPHIRE COMPLEX			Branch:		Division/Group:	
2. Operational Period: 0700 - 2000			II		Z	
Date/Time From: 09/14/2017 0700 THU		Date/Time To: 09/16/2017 2000 SAT				
4. Operations Personnel						
OPERATIONS CHIEF		PETER MYERS DAVID WALKER		DIVISION/GROUP SUPERVISOR		
PLANNING OPS		JAMIE SCHWARTZ JEREMY BRAND (T)		AIR OPERATIONS DIRECTOR		
				ALISON COONS		
				LYNNE HOWARD BART KICKLIGHTER (T)		
5. Resources Assigned this Period						
Strike Team / Task Force / Resource Designator		LWD	Leader	Number Persons	Drop Off PT./Time	Pick Up PT./Time
E-46 UTV OUTBACK FIREFIGHTING LLC					MEYERS ICP/0700	MEYERS ICP/2000
E-47 UTV OUTBACK FIREFIGHTING LLC					MEYERS ICP/0700	MEYERS ICP/2000
E-119 UTV OUTBACK FIRE 747318					MEYERS ICP/0700	MEYERS ICP/2000
E-241 UTV CM BACKCOUNTRY RENTALS					MEYERS ICP/0700	MEYERS ICP/2000
O-462 SOF2		09/15	GARY SEXTON	1	MEYERS ICP/0700	MEYERS ICP/2000
O-457 EMPF		09/19	REX NIELSEN	1	MEYERS ICP/0700	MEYERS ICP/2000
6. Control Operations/Work Assignments:						
Task: Scout, map and acquire intel on previous preparations for contingency line. Assemble needs and time lines to complete if Management Action Points are breached. identify and remove excess equipment.						
Purpose: Minimize area boundary and impacts to resources at risk.						
End State: Execute full suppression.						
7. Special Instructions:						
Identify and remove excess equipment and back haul as appropriate.						
8. Division/Group Communication Summary						
Function	Channel	RX Frequency N/W	RX Tone/NAC	TX Frequency N/W	TX Tone/NAC	Mode
COMMAND	6	170.4125N	123.0	165.9625N	123.0	A
COMMAND	8	169.5375N	123.0	164.7125N	123.0	A
COMMAND	11	171.0375N	123.0	163.8250N	123.0	A
TACTICAL	2	168.2000N	123.0	168.2000N	123.0	A
AIR TO GROUND	14	169.1500N		169.1500N		A
AIR TO GROUND	15	169.0875N		169.0875N		A
AIR GUARD	16	168.6250N		168.6250N	110.9	
9. Prepared By (Resource Unit Leader)			Approved By (Planning Section Chief)		Date	Time
DONNA THOMAS - RESL			TERRY PIERCE - PSC1 <i>J. Pierce</i>		09/13/2017	2100


Division/Group Assignment List (ICS 204 WF)

1. Incident Name:			3.			
MEYERS SAPPHIRE COMPLEX			Branch:		Division/Group:	
2. Operational Period: 0700 - 2000			II		STAGING - LIL HOGBACK	
Date/Time From: 09/14/2017 0700 THU	Date/Time To: 09/16/2017 2000 SAT					
4. Operations Personnel						
OPERATIONS CHIEF		PETER MYERS DAVID WALKER		BRANCH DIRECTOR JEFF SCHARDT		
PLANNING OPS		JAMIE SCHWARTZ JEREMY BRAND (T)		AIR OPERATIONS DIRECTOR LYNNE HOWARD (T) BART KICKLIGHTER (T)		
5. Resources Assigned this Period						
Strike Team / Task Force / Resource Designator		LWD	Leader	Number Persons	Drop Off PT./Time	Pick Up PT./Time
E-191 WTS2		09/16	MIKE THOMAS	1	MEYERS ICP/0700	MEYERS ICP/2000
E-407 DOZ2 THOMPSON AND SONS, INC.		09/24			MEYERS ICP/0700	MEYERS ICP/2000
E-265 DOZ3		09/22	BRAD SMITH	1	MEYERS ICP/0700	MEYERS ICP/2000
6. Control Operations/Work Assignments:						
7. Special Instructions:						
Complete maintenance of equipment as appropriate and maintain readiness to engage as directed by operations.						
8. Division/Group Communication Summary						
Function	Channel	RX Frequency N/W	RX Tone/NAC	TX Frequency N/W	TX Tone/NAC	Mode
COMMAND	8	169.5375N	123.0	164.7125N	123.0	A
COMMAND	9	166.3375N	123.0	170.3875N	123.0	A
TACTICAL	4	168.7250N	123.0	168.7250N	123.0	A
AIR TO GROUND	14	169.1500N		169.1500N		A
AIR TO GROUND	15	169.0875N		169.0875N		A
AIR GUARD	16	168.6250N		168.6250N	110.9	
9. Prepared By (Resource Unit Leader)			Approved By (Planning Section Chief)		Date	Time
DONNA THOMAS - RESL			TERRY PIERCE - PSC1 <i>J. Pierce</i>		09/13/2017	0830


Division/Group Assignment List (ICS 204 WF)

1. Incident Name:			3.			
MEYERS SAPPHIRE COMPLEX			Branch:		Division/Group:	
2. Operational Period: 0700 - 2000			III		A/E	
Date/Time From: 09/14/2017 0700 THU		Date/Time To: 09/16/2017 2000 SAT				
4. Operations Personnel						
OPERATIONS CHIEF		PETE MYERS DAVID WALKER		DIVISION/GROUP SUPERVISOR JOE BURGETT		
PLANNING OPS		JAMIE SCHWARTZ, JEREMY BRAND (T)		AIR OPERATIONS DIRECTOR LYNNE HOWARD BART KICKLIGHTER (T)		
5. Resources Assigned this Period						
Strike Team / Task Force / Resource Designator		LWD	Leader	Number Persons	Drop Off PT./Time	Pick Up PT./Time
O-697 TFLD		09/25	JENNIFER NEPPL	1	MEYERS ICP /0700	MEYERS ICP/2000
O-247 MILLER CREEK MODULE 2 FAL1		09/19	VINCE NUZZO	2	MEYERS ICP /0700	MEYERS ICP/2000
E-333 ENG4 INLAND FOREST		09/25	DAVE LOVEJOY	2	MEYERS ICP /0700	MEYERS ICP/2000
E-39 ENG6 SCOTTS FIRE		09/15	DAVID HENDERSON	3	MEYERS ICP /0700	MEYERS ICP/2000
E-304 ENG6 CARIBOU TARGHEE 632		09/26	ADAM JAMES	4	MEYERS ICP /0700	MEYERS ICP/2000
E-41 ENG6 BROCKWAY		09/24	RODGER BROCKWAY	3	MEYERS ICP /0700	MEYERS ICP/2000
E-63 ENG6 HIGH DESERT		10/02	TOM HANKS	2	MEYERS ICP /0700	MEYERS ICP/2000
E-123 ENG6		09/20	JAMES DOUGLES	2	MEYERS ICP /0700	MEYERS ICP/2000
O-548 SOF2		09/16	DAVID CARTER	1	MEYERS ICP /0700	MEYERS ICP/2000
E-246 AMBU		09/25	A1 AMBULANCE		MEYERS ICP /0700	MEYERS ICP/2000
6. Control Operations/Work Assignments:						
Task: Implement structure protection plan at Moose Lake Subdivision, Lolo Camp, and Helen's Cabin. Mop-up all spots on the east side of road 5106. Mop up previous burnout operation around DP1.						
Purpose: To secure structures at Moose Lake Subdivision, Lolo Camp and Helen's Cabin.						
End State: Protect values at risk and minimize impacts/threats to the Moose Lake Subdivision, Lolo Camp and Helen's Cabin.						
8. Division/Group Communication Summary						
Function	Channel	RX Frequency N/W	RX Tone/NAC	TX Frequency N/W	TX Tone/NAC	Mode
COMMAND	9	168.5750N	114.8	173.6750N	114.8	A
TACTICAL	1	168.0500N	114.8	168.0500N	114.8	A
AIR TO GROUND	14	169.2000N		169.2000N		A
AIR TO GROUND	15	164.7500N		164.7500N		A
AIR GUARD	16	168.6250N		168.6250N	110.9	A
9. Prepared By (Resource Unit Leader)			Approved By (Planning Section Chief)		Date	Time
RICH AUBUCHON - RESL			TERRY PIERCE - PSC1 <i>J. Pierce</i>		09/13/2017	0830


Division/Group Assignment List (ICS 204 WF)

1. Incident Name:			3.			
MEYERS SAPPHIRE COMPLEX			III	Division/Group: A/E		
2. Operational Period: 0700 - 2000						
Date/Time From: 09/14/2017 0700 THU		Date/Time To: 09/16/2017 2000 SAT				
4. Operations Personnel						
OPERATIONS CHIEF	PETE MYERS DAVID WALKER		DIVISION/GROUP SUPERVISOR	JOE BURGETT		
PLANNING OPS	JAMIE SCHWARTZ, JEREMY BRAND (T)		AIR OPERATIONS DIRECTOR	LYNNE HOWARD BART KICKLIGHTER (T)		
7. Special Instructions:						
<p>Refer to the 220 for aerial water use practices to prevent the spread of aquatic invasives.</p> <p>Saw out Road 5106 from DP 1 to DP 19.</p> <p>Identify IA resources within division.</p>						
8. Division/Group Communication Summary						
Function	Channel	RX Frequency N/W	RX Tone/NAC	TX Frequency N/W	TX Tone/NAC	Mode
COMMAND	9	168.5750N	114.8	173.6750N	114.8	A
TACTICAL	1	168.0500N	114.8	168.0500N	114.8	A
AIR TO GROUND	14	169.2000N		169.2000N		A
AIR TO GROUND	15	164.7500N		164.7500N		A
AIR GUARD	16	168.6250N		168.6250N	110.9	A
9. Prepared By (Resource Unit Leader)			Approved By (Planning Section Chief)		Date	Time
RICH AUBUCHON - RESL			TERRY PIERCE - PSC1 		09/13/2017	0830

Division/Group Assignment List (ICS 204 WF)

1. Incident Name:			3.			
MEYERS SAPPHIRE COMPLEX			Branch:		Division/Group:	
2. Operational Period: 0700 - 2000			III		I	
Date/Time From: 09/14/2017 0700 THU		Date/Time To: 09/16/2017 2000 SAT				
4. Operations Personnel						
OPERATIONS CHIEF		PETER MYERS DAVID WALKER		DIVISION/GROUP SUPERVISOR		
PLANNING OPS		JAMIE SCHWARTZ JEREMY BRAND (T)		AIR OPERATIONS DIRECTOR		
				JEREMY BRAND RUSS WILLIAMS (T), NICK PETERS (T)		
				LYNNE HOWARD BART KICKLIGHTER (T)		
5. Resources Assigned this Period						
Strike Team / Task Force / Resource Designator		LWD	Leader	Number Persons	Drop Off PT./Time	Pick Up PT./Time
TFLD		09/17	RYAN WOIRHAYE	1	EAST FORK SPIKE/0700	EAST FORK SPIKE/2000
TFLD (T)		09/21	CORY RENNAKER	1	EAST FORK SPIKE/0700	EAST FORK SPIKE/2000
O-663 HEQB (T)		09/22	MIKE NOVA	1	EAST FORK SPIKE/0700	EAST FORK SPIKE/2000
E-182 ROCKY MOUNTIAN FIRE ENG3		09/17	RON GENTRY	3	EAST FORK SPIKE/0700	EAST FORK SPIKE/2000
E-289 GIST ENTERPRISES ENG3		09/23	LEW WALLACE	3	EAST FORK SPIKE/0700	EAST FORK SPIKE/2000
E-288 HOTSPOT FIRE ENG5		09/20	CATHY PALIN	3	EAST FORK SPIKE/0700	EAST FORK SPIKE/2000
E-268 ROCKY MOUNTAIN TIMBER ENG6		09/25	BRIAN CAHOON	3	EAST FORK SPIKE/0700	EAST FORK SPIKE/2000
E-342 METAL WORKS ENG6		09/18	EUGENE WEASEL	3	EAST FORK SPIKE/0700	EAST FORK SPIKE/2000
E-134 WTT2 MELROSE VFD		09/26	CLINT MOYER	1	EAST FORK SPIKE/0700	EAST FORK SPIKE/2000
E-253 TIMBER TRAIL EXCA		09/19	MIKE THORSON	1	EAST FORK SPIKE/0700	EAST FORK SPIKE/2000
E-142 TIMBER SKG2		09/14	KEITH BRANDEMIHL	1	EAST FORK SPIKE/0700	EAST FORK SPIKE/2000
E-142 TIMBER SKD2		09/20	CHASE STOKER	1	EAST FORK SPIKE/0700	EAST FORK SPIKE/2000
E-136 SKD2 AC LOGGING		09/17	ALAN CONOVER	1	EAST FORK SPIKE/0700	EAST FORK SPIKE/2000
E-137 SKD2 INTERMOUNTAIN		09/16	WILLIAM JOHNSON	1	EAST FORK SPIKE/0700	EAST FORK SPIKE/2000
E-62 FORWARDER FLANAGAN		09/22	EARL FLANAGAN	1	EAST FORK SPIKE/0700	EAST FORK SPIKE/2000
8. Division/Group Communication Summary						
Function	Channel	RX Frequency N/W	RX Tone/NAC	TX Frequency N/W	TX Tone/NAC	Mode
COMMAND	9	168.5750N	114.8	173.6750N	114.8	A
TACTICAL	6	168.2500N	114.8	168.2500N	114.8	A
AIR TO GROUND	14	169.2000N		169.2000N		A
AIR TO GROUND	15	164.7500N		164.7500N		A
AIR GUARD	16	168.6250N		168.6250N	110.9	A
9. Prepared By (Resource Unit Leader)			Approved By (Planning Section Chief)		Date	Time
RICH AUBUCHON - RESL			TERRY PIERCE - PSC1 		09/13/2017	0830

Division/Group Assignment List (ICS 204 WF)

1. Incident Name:			3.			
MEYERS SAPPHIRE COMPLEX			Branch:		Division/Group:	
2. Operational Period: 0700 - 2000			III		I	
Date/Time From: 09/14/2017 0700 THU		Date/Time To: 09/16/2017 2000 SAT				
4. Operations Personnel						
OPERATIONS CHIEF		PETER MYERS DAVID WALKER		DIVISION/GROUP SUPERVISOR		JEREMY BRAND RUSS WILLIAMS (T), NICK PETERS (T)
PLANNING OPS		JAMIE SCHWARTZ JEREMY BRAND (T)		AIR OPERATIONS DIRECTOR		LYNNE HOWARD BART KICKLIGHTER (T)
5. Resources Assigned this Period						
Strike Team / Task Force / Resource Designator		LWD	Leader	Number Persons	Drop Off PT./Time	Pick Up PT./Time
E-229 FORWARDER TIMBER SOLUTIONS		09/24	PAUL LOVAAS	1	EAST FORK SPIKE/0700	EAST FORK SPIKE/2000
O-674 SOF1		09/23	BRAD LIDELL	1	EAST FORK SPIKE/0700	EAST FORK SPIKE/2000
O-537 EMTB		09/15	OLENA GARTNER	1	EAST FORK SPIKE/0700	EAST FORK SPIKE/2000
6. Control Operations/Work Assignments:						
Task: In Billy Springer Memorial and Bonanza Subdivisions, continue structure protection measures. Finish and improve hand and mechanical line around subdivisions and threatened structures.						
Purpose: To secure structures and private property in the Bill Springer Memorial and Bonanza Subdivisions.						
End State: To protect values at risk and minimize impacts/threats in the Billy Springer Memorial and Bonanza Subdivisions.						
7. Special Instructions:						
Refer to the 220 for aerial water use practices to prevent the spread of aquatic invasives.						
Identify IA resources within division.						
8. Division/Group Communication Summary						
Function	Channel	RX Frequency N/W	RX Tone/NAC	TX Frequency N/W	TX Tone/NAC	Mode
COMMAND	9	168.5750N	114.8	173.6750N	114.8	A
TACTICAL	6	168.2500N	114.8	168.2500N	114.8	A
AIR TO GROUND	14	169.2000N		169.2000N		A
AIR TO GROUND	15	164.7500N		164.7500N		A
AIR GUARD	16	168.6250N		168.6250N	110.9	A
9. Prepared By (Resource Unit Leader)			Approved By (Planning Section Chief)		Date	Time
RICH AUBUCHON - RESL			TERRY PIERCE - PSC1 		09/13/2017	0830


Division/Group Assignment List (ICS 204 WF)

1. Incident Name:			3.			
MEYERS SAPPHIRE COMPLEX			Branch:		Division/Group:	
2. Operational Period: 0700 - 2000			III		K	
Date/Time From: 09/14/2017 0700 THU		Date/Time To: 09/16/2017 2000 SAT				
4. Operations Personnel						
OPERATIONS CHIEF		PETER MYERS DAVID WALKER		DIVISION/GROUP SUPERVISOR		
PLANNING OPS		JAMIE SCHWARTZ JEREMY BRAND (T)		AIR OPERATIONS DIRECTOR		
				SHANE STURGILL LYNNE HOWARD, BART KICKLIGHTER (T)		
5. Resources Assigned this Period						
Strike Team / Task Force / Resource Designator		LWD	Leader	Number Persons	Drop Off PT./Time	Pick Up PT./Time
O-246 MILLER CREEK MODULE 3 FAL1		09/24	PETE CLIFFORD	2	MEYERS ICP/0700	MEYERS ICP/2000
O-696 TFLD		09/23	ROBERT VICK	1	MEYERS ICP/0700	MEYERS ICP/2000
E-26 ENG4 FIRECO		09/18	CLAYTON CONSTANT	3	MEYERS ICP/0700	MEYERS ICP/2000
E-44 ENG6 TORCH FIRE 63		09/16	ANDY TOLMAN	3	MEYERS ICP/0700	MEYERS ICP/2000
E-86 ENG6 AEGIS		09/14	ROY VARNEY	3	MEYERS ICP/0700	MEYERS ICP/2000
E-305 ENG6 NORTHWEST FIRE 0710		09/14	MARCUS JANES	3	MEYERS ICP/0700	MEYERS ICP/2000
E-307 ENG6 CENTRAL AZ FIRE 548		09/14	MATHEW MAYHALL	3	MEYERS ICP/0700	MEYERS ICP/2000
E-306 ENG6 GREEN VALLEY 150		09/14	MICHAEL CARRAFA	3	MEYERS ICP/0700	MEYERS ICP/2000
E-126 WTS1 HIGHSIERRA ENTERPRISE		09/26	SCOTT HUBBARD	1	MEYERS ICP/0700	MEYERS ICP/2000
E-143 MORANVILLE WTT2		09/23	CARY TAYLOR	1	MEYERS ICP/0700	MEYERS ICP/2000
E-194 WTS2 BIRD WATER #6		09/16	TODD BENEDICT	1	MEYERS ICP/0700	MEYERS ICP/2000
O-563 EMPF		09/14	MELANIE R MILLER	1	MEYERS ICP/0700	MEYERS ICP/2000
6. Control Operations/Work Assignments:						
Task: Continue to evaluate potential opportunities for point protection. Conduct burnout operations where feasible.						
Purpose: To secure structures and private property in the Frog Pond Basin.						
End State: Protect values at risk and minimize impacts and threats to Frog Pond Basin while minimizing exposure and impacts to critical values at risk.						
7. Special Instructions:						
8. Division/Group Communication Summary						
Function	Channel	RX Frequency N/W	RX Tone/NAC	TX Frequency N/W	TX Tone/NAC	Mode
COMMAND	9	168.5750N	114.8	173.6750N	114.8	A
TACTICAL	2	168.2000N	114.8	168.2000N	114.8	A
AIR TO GROUND	14	169.2000N		169.2000N		A
AIR TO GROUND	15	164.7500N		164.7500N		A
AIR GUARD	16	168.6250N		168.6250N	110.9	A
9. Prepared By (Resource Unit Leader)			Approved By (Planning Section Chief)		Date	Time
RICH AUBUCHON - RESL			TERRY PIERCE - PSC1 <i>J. Pierce</i>		09/13/2017	0830

Division/Group Assignment List (ICS 204 WF)

1. Incident Name:			3.			
MEYERS SAPPHIRE COMPLEX			Branch:		Division/Group:	
2. Operational Period: 0700 - 2000			III		R/T	
Date/Time From: 09/14/2017 0700 THU	Date/Time To: 09/16/2017 2000 SAT					
4. Operations Personnel						
OPERATIONS CHIEF	PETER MYERS, DAVID WALKER		DIVISION/GROUP SUPERVISOR	BRIAN BROWNING JACOB JERESEK (T)		
PLANNING OPS	JAMIE SCHWARTZ, JEREMY BRAND (T)		AIR OPERATIONS DIRECTOR	LYNN HOWARD BART KICKLIGHTER (T)		
5. Resources Assigned this Period						
Strike Team / Task Force / Resource Designator	LWD	Leader	Number Persons	Drop Off PT./Time	Pick Up PT./Time	
C-56 BITTERROOT IHC	09/15	JAY WOOD	21	MEYER ICP/0700	MEYER ICP/2000	
E-308 ENG6 BERTHOUD	09/14	SHANE PRIME	3	MEYER ICP/0700	MEYER ICP/2000	
E-309 ENG6 WORLAND 63	09/21	BEN GOMEZ	3	MEYER ICP/0700	MEYER ICP/2000	
E-63 SKG3 AC LOGGING	09/21	SOULTER GANAN	1	MEYER ICP/0700	MEYER ICP/2000	
E-235 WT2 CASTLE MOUNTAIN FIRE	09/20	ARTIE JAMES	1	MEYER ICP/0700	MEYER ICP/2000	
EMTF	09/14	CHRIS ORR	1	MEYER ICP/0700	MEYER ICP/2000	
O-592.6 SOF1	09/16	LARRY CONNELL	1	MEYER ICP/0700	MEYER ICP/2000	
6. Control Operations/Work Assignments:						
Task: Patrol for spot fires and slop overs; mop up 100%. Mop up perimeter of burnout 30-300 feet, where safe to do so, to secure the fire line. Monitor spot fire in Senate Creek.						
Purpose: Minimize acres burned in DIV R/T.						
End State: Execute full suppression fire management strategies using indirect protection tactics to guide fire into man-made or natural barriers, while minimizing firefighter exposure and impacts to critical values at risk.						
7. Special Instructions:						
Refer to the 220 for aerial water use practices to prevent the spread of aquatic invasives.						
Identify IA resources within division.						
8. Division/Group Communication Summary						
Function	Channel	RX Frequency N/W	RX Tone/NAC	TX Frequency N/W	TX Tone/NAC	Mode
COMMAND	7	168.0750N	114.8	170.4250N	114.8	A
TACTICAL	4	166.7250N	114.8	166.7250N	114.8	A
AIR TO GROUND	14	169.2000N		169.2000N		A
AIR TO GROUND	15	164.7500N		164.7500N		A
AIR GUARD	16	168.6250N		168.6250N	110.9	A
9. Prepared By (Resource Unit Leader)		Approved By (Planning Section Chief)		Date	Time	
RICH AUBUCHON - RESL		TERRY PIERCE - PSC1 <i>T. Pierce</i>		09/13/2017	0830	

Division/Group Assignment List (ICS 204 WF)


1. Incident Name:			3.			
MEYERS SAPPHIRE COMPLEX			III		W	
2. Operational Period: 0700 - 2000						
Date/Time From: 09/14/2017 0700 THU		Date/Time To: 09/16/2017 2000 SAT				
4. Operations Personnel						
OPERATIONS CHIEF		PETER MYERS DAVID WALKER		DIVISION/GROUP SUPERVISOR		KELLY CORNWALL
PLANNING OPS		JAMIE SCHWARTZ JEREMY BRAND (T)		AIR OPERATIONS DIRECTOR		LYNNE HOWARD BART KICKLIGHTER (T)
5. Resources Assigned this Period						
Strike Team / Task Force / Resource Designator		LWD	Leader	Number Persons	Drop Off PT./Time	Pick Up PT./Time
UNSTAFFED						
6. Control Operations/Work Assignments:						
Task: Scout, map and acquire intel on previous preparations for contingency line. Assemble needs and time lines to complete if Management Action Points are breached						
Purpose: Minimize area boundary and impacts to resources at risk.						
End State: Execute full suppression.						
7. Special Instructions:						
Complete maintenance of equipment as appropriate and maintain readiness to engage as directed by operations.						
8. Division/Group Communication Summary						
Function	Channel	RX Frequency N/W	RX Tone/NAC	TX Frequency N/W	TX Tone/NAC	Mode
COMMAND	7	168.0750N	114.8	170.4250N	114.8	A
TACTICAL	5	166.7750N	114.8	166.7750N	114.8	A
AIR TO GROUND	14	169.2000N		169.2000N		A
AIR TO GROUND	15	164.7500N		164.7500N		A
AIR GUARD	16	168.6250N		168.6250N	110.9	A
9. Prepared By (Resource Unit Leader)			Approved By (Planning Section Chief)		Date	Time
RICH AUBUCHON - RESL			TERRY PIERCE - PSC1 		09/13/2017	0830

INCIDENT RADIO COMMUNICATIONS PLAN (ICS 205)

1. Incident Name: MEYERS SAPPHIRE COMPLEX	2. Date/Time Prepared: Date: 09/13/2017 Time: 1900	3. Operational Period: Date/Time From: 09/14/2017 0700 Date/Time To: 09/16/2017 2000 THU SAT
---	---	--

Zone Group	Ch #	Function	Channel Name/Trunked Radio System Talkgroup	Assignment	RX Freq	RX Tone/NAC	TX Freq	TX Tone/NAC	Mode (A, D, or M)	Remarks
SAPPHIRE	1	TACTICAL	TAC 1	DIV G	168.0500N	123.0	168.0500N	123.0	A	BRANCH I
SAPPHIRE	2	TACTICAL	TAC 2	DIV Z & NIGHT	168.2000N	123.0	168.2000N	123.0	A	LITTLE HOGBACK - BRANCH II
SAPPHIRE	3	TACTICAL	TAC 3	DIV N/O/P	168.6000N	123.0	168.6000N	123.0	A	LITTLE HOGBACK - BRANCH II
SAPPHIRE	4	TACTICAL	TAC 4	STAGING	168.7250N	123.0	168.7250N	123.0	A	LITTLE HOGBACK - BRANCH II
SAPPHIRE	5	TACTICAL	TAC 5	REHAB GROUP	166.7750N	123.0	166.7750N	123.0	A	LITTLE HOGBACK - BRANCH II
SAPPHIRE	6	COMMAND	CMD 6	ALL DIVISIONS	170.4125N	123.0	165.9625N	123.0	A	CMD RPT FOR LITTLE HOGBACK FIRE - SOUTHWEST
SAPPHIRE	7	COMMAND	CMD 7	ALL DIVISIONS	168.1000N	123.0	170.4500N	123.0	A	CMD RPT FOR GOAT CREEK AND SLIDE ROCK FIRES - WEST
SAPPHIRE	8	COMMAND	CMD 8	ALL DIVISIONS	169.5375N	123.0	164.7125N	123.0	A	CMD RPT FOR LITTLE HOGBACK FIRE - WEST
SAPPHIRE	9	COMMAND	CMD 9	ALL DIVISIONS	166.3375N	123.0	170.3875N	123.0	A	CMD RPT FOR LITTLE HOGBACK FIRE - EAST
SAPPHIRE	10	COMMAND	CMD 10	ALL DIVISIONS	164.6750N	123.0	169.8125N	123.0	A	CMD RPT FOR GOAT CREEK AND SLIDE ROCK FIRES - EAST
SAPPHIRE	11	COMMAND	CMD 11	ALL DIVISIONS	171.0375N	123.0	163.8250N	123.0	A	SE END OF LITTLE HOGBACK
SAPPHIRE	12	TACTICAL	TAN	EMS	155.3400N		155.3400N	156.7	A	AIR AMBULANCE
SAPPHIRE	13	QUIGG RPT	QUIGG RPT	IA	164.7000N		164.1000N	131.8	A	LOLO FOREST RPT
SAPPHIRE	14	AIR TO GROUND	AG 1	AIR ATTACK	169.1500N		169.1500N		A	COMMUNICATE WITH AIR ATTACK
SAPPHIRE	15	AIR TO GROUND	AG 2	BRANCHES I AND II	169.0875N		169.0875N		A	
SAPPHIRE	16	AIR GUARD	AIRGRD	ALL DIVISIONS	168.6250N		168.6250N	110.9	A	AIR EMERGENCY OR INITIAL CONTACT

5. Special Instructions:
COMMS TELEPHONE NUMBER 406-859-9099

6. Prepared By (Communications Unit Leader) Name: JERRY W. PATRICK	Signature: 
ICS 205	Date/Time: 09/13/2017 1900


INCIDENT RADIO COMMUNICATIONS PLAN (ICS 205)

1. Incident Name: MEYERS SAPPHIRE COMPLEX	2. Date/Time Prepared: Date: 09/13/2017 Time: 1900	3. Operational Period: Date/Time From: 09/14/2017 0700 Date/Time To: 09/16/2017 2000	THU SAT
---	---	---	-----------------------

4. Basic Radio Channel Use:

Zone Group	Ch #	Function	Channel Name/Trunked Radio System Talkgroup	Assignment	RX Freq	RX Tone/NAC	TX Freq	TX Tone/NAC	Mode (A, D, or M)	Remarks
MEYERS	1	TACTICAL	TAC 1	DIV A/E	168.0500N	114.8	168.0500N	114.8	A	
MEYERS	2	TACTICAL	TAC 2	DIV K	168.2000N	114.8	168.2000N	114.8	A	
MEYERS	3	TACTICAL	TAC 3	NIGHT SHIFT	168.6000N	114.8	168.6000N	114.8	A	
MEYERS	4	TACTICAL	TAC 4	DIV R/T	166.7250N	114.8	166.7250N	114.8	A	
MEYERS	5	TACTICAL	TAC 5	DIV W	166.7750N	114.8	166.7750N	114.8	A	
MEYERS	6	TACTICAL	TAC 6	DIV I	168.2500N	114.8	168.2500N	114.8	A	
MEYERS	7	COMMAND	CMD 3	N. OF THE FIRE	168.0750N	114.8	170.4250N	114.8	A	FIRELINE TO ICP - EMERINE MT.
MEYERS	8	COMMAND								
MEYERS	9	COMMAND	CMD 5	S. OF THE FIRE	168.5750N	114.8	173.6750N	114.8	A	FIRELINE TO ICP - SENATE MT.
MEYERS	10	COMMAND	CMD 6	SE OF THE FIRE	173.0375N	114.8	167.3250N	114.8	A	FIRELINE TO ICP - TINY MT.
MEYERS	11	COMMAND	B-D / EMERINE	B-D FOREST NET	171.0000N		170.3500N	146.2	A	B-D FOREST NET BACKUP - EMERINE
MEYERS	12	TACTICAL	TAN	EMS	155.3400N		155.3400N	156.7	A	AIR AMBULANCE
MEYERS	13	TACTICAL	WHITE	EMS	155.2800N		155.2800N	156.7	A	GROUND AMBULANCE
MEYERS	14	AIR TO GROUND	A/G PRIMARY	ALL DIVISIONS	169.2000N		169.2000N		A	AIR TO GROUND PRIMARY
MEYERS	15	AIR TO GROUND	A/G SECONDARY	ALL DIVISIONS	164.7500N		164.7500N		A	AIR TO GROUND SECONDARY
MEYERS	16	AIR GUARD	AIRGUARD	ALL DIVISIONS	168.6250N		168.6250N	110.9	A	AIR EMERGENCY ONLY

5. Special Instructions:
COMMS TELEPHONE NUMBER 406-859-9099

6. Prepared By (Communications Unit Leader)	Name: JERRY W. PATRICK
ICS 205	IAP Page
	Signature: 
	Date/Time: 09/13/2017 1900

NOTE: Air Tactical and Platforms TBD on Case By Case Need

9. HELICOPTERS								7d. Initial Attack Freqs	
FAA #	REQ #	TY	MAKE/ MODEL	BASE	BRIEF	AVAIL	REMARKS		
116	A-7	1	KMax	Meyers	800	830	Restricted; Quick Fill	B-D IA Air/Air	171.425 RX/TX TT 131.8
17HX	A-67	2	Bell 205++	Meyers	800	830	Standard	B-D IA A/G #29 (pri)	171.000 RX/TX TT 141.3
111DR	A-87	2	B-205	Meyers	800	830	Restricted	B-D IA A/G #52 (sec)	132.7000
7HE	A-14	3	AS-350B3	H-31	800	830	Standard; litter-capable	B-D IA A/G #53 (alt)	166.9000 N
407MC	A-69	3	Bell 407	Meyers	800	830	Standard; backboard only	Lolo East Direct	168.3875 N
3521A	A-37	3	AS-350B3	Meyers	800	830	Standard	Lolo East A/G	168.6500N 110.9 Rx/Tx
								Lolo West Direct	166.5000N
								Lolo West A/G (A/G 05)	164.9125N 123.0 TX
9. FIXED WING									
N441	A-		Cessna 206-F	Butte			ATGS Platform	Bitterroot Forest A/G	166.7500N
								Bitterroot A/A	Rx 168.3875 Tx 168.3875
									125.175
NOTE: Italicized Aircraft/Req are on Meyers Order; Others are Sapphire									
								Bitterroot Dispatch Ch 1	Rx 168.750 Tx 168.750 Tn 131.8
								Bitterroot Dispatch Ch 2	Rx 169.625 Tx 169.625 Tn 146.2
10. MISSIONS - MEYERS									
Type								TIME	From To
Bucket drops as requested								TBD	Meyers Helibase Fire
Recon as requested								TBD	Meyers Helibase Fire
Aerial Ignition possible								TBD	Meyers Helibase Fire
								TBD	Meyers Helibase Fire
10. MISSIONS - SAPPHIRE									
Type								TIME	From To
Bucket Support as requested In DIVS Z to hold/check firing operation								TBD	Meyers Helibase Fire
ATGS to monitor Sliderock and support Sapphire as requested								TBD	Meyers Helibase Fire
Recon as requested								TBD	Meyers Helibase Fire
Aerial Ignition as requested								TBD	Meyers Helibase Fire

Signature: /s/ *Ayime Howard*, AOB

Meyers ICP Fire Phone List
Southern Area Incident Management Team
Mike Dueitt - Incident Commander

POSITION	INCIDENT PHONE
Incident Commander	(406) 859-9101
Liaison Officer	(406) 859-9102
Safety Officer	(406) 859-9129
Public Information Officer	(406) 859-9107
Operations Section Chief	(406) 859-9129
Air Operations Branch Director	(406) 859-9129
Meyers Helibase	(406) 859-9133
Planning Section Chief	(406) 859-9106
Human Resource Specialist	(503) 307 8820
Logistics Section Chief	(406) 859-9103
Communications	(406) 859-9099
Facilities Unit Leader	(406) 859-9130
Ground Support	(406) 859-9097
Ground Support	(406) 859-9098
Medical Unit Leader	(406) 859-9100
Finance Section Chief	(406) 859-9092
Ordering Manager	(406) 859-9090
Ordering	(406) 859-9091
Resource Unit Leader	(406) 859-9129
Demob Unit Leader	(406) 859-9106
Security	(406) 859-9130
Plans FAX	(406) 859-9105



HEALTH AND SAFETY MESSAGE

“We don’t plan on luck to be safe, we plan on good risk management and good decisions”....the Red Team

INCIDENT: Meyers-Sapphire Complex	DATE: September 14 th thru 16 th , 2017
Major Hazards and Risks: Cold Weather/Hypothermia, Driving, Heavy Equipment	
<p>Cold Weather: Hypothermia can be caused by rain at temperatures as high as 50 degrees Fahrenheit. Symptoms of hypothermia occur even sooner when the temperatures are lower, you are wet and body heat is lost slowly. Now is the time to make preparations for your personal sleeping areas and gear. Keep your sleeping area and clothing dry at all times.</p> <p>Driving on the Incident: As the chances for precipitation increase over the next several days, most of the major highways and roads will be slick. You may encounter water in areas where it hasn’t been since the incident begin. Be alert for other vehicles, adjust your following distances and speed as needed.</p> <p>Heavy Equipment: Preparations are being made to stage the majority of the heavy equipment on the incident until the rain event ends. Be aware of transport vehicles and the roads you are traveling on. Give the equipment enough space to make wide turns when necessary and yield to them on narrow roads as they approach you. Road surfaces will become extremely slick once they receive any measureable precipitation. Slow Down!</p>	



©.Original Artist
Reproduction rights obtainable from
www.CartoonStock.com

TELL JOHNSON THAT THE SAFETY OFFICER WOULD LIKE TO
SPEAK WITH HIM...THE SOONER THE BETTER

Fire Order of the Day:

Give clear instructions and insure they are understood!

- Task = What is to be done
- Purpose = Why it needs to be done
- End State = How it should look when completed

Red Team Safety Officers: Tony Rivers (T), Larry Connell, Brad Lidell

MEDICAL PLAN (ICS 206 WF)

1. Incident/Project Name		2. Operational Period					
Meyers Sapphire Complex		Date/Time 9/14-16//2017 operational period					
3. Ambulance Services							
Name	Availability	Contact	Advanced Life Support (ALS) Yes No				
A-1 Ambulance Branch 1	Incident dedicated	Command channel	X				
Three Rivers Ambulance Branch 2	Incident dedicated	Command channel	X				
Granite, Ravalli and Deer Lodge County		911			X		
4. Air Ambulance Services							
Name	Phone	Type of Aircraft & Capability					
Air Idaho Rescue (West Yellowstone)	1-208-529-6340	Night Vision, ALS flight service, Tan. Ch 12					
Life Flight (Missoula and Butte)	911	Night vision, ALS transport, Frequency Tan. Ch 12					
Two Bear Air	911	Night vision, FLIR, hoist, can transport to ground unit or private aeromed unit. Frequency Tan. Ch 12					
5. Hospitals							
Name Complete Address	GPS Datum – WGS 84 Coordinate Standard Degrees Decimal Minutes DD° MM.MMM' N - Lat DD° MM.MMM' W - Long		Travel Time (from ICP)		Helipad Yes No	Level of Care Facility	
	Lat:	N 46° 52.551'	Air	Ground			Phone
St. Patrick's Hospital 500 W Broadway Missoula, MT	Long:	W113° 59.986'	30 min	120 min	406-329-5635, Emergency Rm	Yes	Level 2 Trauma
Community Hospital of Anaconda 401 W Pennsylvania Anaconda, MT	Lat:	N 46° 07.969'	15 mins	45 mins	406-563-8585 ER Emergency Rm	Yes roof & ground	Level 4 community trauma hospital
Granite County Medical Center 310 Sansome ST Philipsburg, Mt	Long:	W113° 17.653'	15 min	30 min	406-859-3271	Yes	community hospital, no trauma designation
Marcus Daly Hospital 1200 Westwood dr Hamilton MT	Lat:	N 46° 14.898'		To India Spike 1.0 hrs	406-363-2211	Yes	Level 4 trauma
Special Notes							
The Medical unit will be open from 0530 – 2200. After hours, security can contact the incident ambulance and the MEDL in case of an emergency in camp or on the line.							
6. Division/Branch		Area Location Capability					
Division A/E Branch 3		EMS Responders & Capability:			A-1 Ambulance (ALS,BLS)		
		Equipment Available on Scene:			spine board, kit, oxygen		
		Medical Emergency Channel:			Command Channel		
		ETA for Ambulance to Scene:			5-10 min. *Stationed at Copper Creek CG*		
		Air/Ground:			A/G Primary 169.2000		
		Approved Helispots:			H8, near DP 19		
		Lat:			N 45 59.963'		
Long:			W113 31.708'				

MEDICAL PLAN (ICS 206 WF)

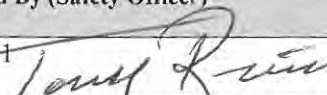
Branch 3 Division R/T/W	EMS Responders & Capability:	Chris Orr, EMTF			
	Equipment Available on Scene:	BLS Kit, SKED, AED, BLS			
	Medical Emergency Channel:	Tac on ground/Command Channel			
	ETA for Ambulance to Scene:	45 minutes			
	Air/Ground:	A/G Primary 169.2000			
	Approved Helispots:	H-18 , near DP28			
	Lat:	N 46° 08.610'			
	Long:	W 113° 36.45'			
Branch 3 Division I (India)	EMS Responders & Capability	Olena Gartner, EMTF			
	Equipment Available on Scene:	BLS Kit, Spine Board, Oxygen			
	ETA for Ambulance to Scene:	1.0 hours			
	Air/Ground	A/G primary			
	Approved Helispots	H-31			
	Lat:	N 45° 54.340'			
	Long:	W113° 45.114'			
	Medical Emergency Channel:	Command,			
Branch 3 Division K	EMS Responders & Capability:	Melanie Miller, EMPF			
	Equipment Available on Scene:	ALS/BLS Kit, Sked, AED, O2			
	ETA for Ambulance to Scene:	45 min			
	Approved Helispot:	H- 10			
	Lat:	N46° 01.531'			
	Long:	W113° 39.998'			
	Medical Emergency Channel:	Command			
Branch 1 Division G (GOAT)	Point of Contact:	Greg Titus			
	EMS Responders & Capability:	Unstaffed			
	Equipment Available on Scene:	BLS, Trauma kit, O2, SKED			
	ETA for Ambulance to scene:	1 hr from Missoula			
	Air from Helibase:	15 min			
	Approved Helispot:	H-4			
	Lat:	N 46° 40.553			
	Long:	W 113° 35.817			
Branch 2 Division N	Point of Contact:	Alison Coons			
	EMS Responders & Capability:	Terry Williams, AEMTF			
	Equipment Available on Scene:	BLS, Trauma kit, O2			
	ETA for Ambulance to Scene:	1hr from DP-49 (Three Rivers Ambulance)			
	Air from Helibase:	15 min			
	Approved Helispot:	H-14	H-15	H-16	Miner Mud
	Lat:	N46 31.110	N46 29.219	N46 26.120	N46 24.102
	Long:	W113 30.650	W113 30.981	W113 30.920	W113 30.278
	Medical Emergency Channel:	Command			
Branch 2 Division O	Point of Contact:	Alison Coons			
	EMS Responders & Capability:	Gary Simpson, EMTF			
	Equipment Available on Scene:	BLS, O2, Trauma kit, SKED			
	ETA for Ambulance to Scene:	30 min from DP-49 (Three Rivers Ambulance)			
	Air from Helibase:	15 min			
	Approved Helispot:	H-17		H-18	
	Lat:	N 46° 22.498		N 46° 21.505	
	Long:	W 113° 31.770		W 113° 32.533	
Medical Emergency Channel:	Command				

MEDICAL PLAN (ICS 206 WF)

Branch 2 Division P	Point of Contact:	Alison Coon	
	EMS Responders and Capability:	Gary Simpson, EMTF Three Rivers Ambulance (ALS, Paramedic)	
	Equipment Available on Scene:	BLS, ALS, Trauma gear, O2, AED	
	ETA for Ambulance:	30 min from DP-49 (Three Rivers)	
	Air from Helibase:	15min	
	Approved Helispot:	H-18	H-19
	Lat:	N 46° 21.505	N 46° 21.547
	Long:	W 113° 32.533	W 113° 33.252
	Medical Emergency Channel:	Command	
Branch 2 Division Z	Point of Contact:	Alison Coons	
	EMS Responders & Capability:	Rex Nielsen, EMPF	
	Equipment Available on scene:	ALS kit w/Meds, O2, SKED, AED	
	ETA for Ambulance:	30 min from ICP to DP-49 (Three Rivers)	
	Air from Helibase:	15 min	
	Approved Helispot:	H-21	
	Lat:	N 46° 24.623	
	Long:	W 113° 42.064	
	Medical Emergency Channel:	Command	
ICP	Ambulance:	Staged at DP-49 (Three Rivers)	
	EMS responders and capability	Dale Guynes, EMTB (BLS)	
	Equipment Available on Scene:	AED, medical unit supplies	
	Medical Emergency Channel:	Command Channel	
	ETA for Ambulance to Scene:	45 min	
	Approved Helispot:	Meyers Helibase	
	Lat:	N 46° 11.051'	
Long:	W 113° 29.571' elevation 6000'		

IWI IC Responsibilities:

- Take charge of the scene – inform the Division Supervisor and Communications that you are the IWI IC and establish radio communications (frequencies, channels). Identify the emergency name.
– e.g. (Division A medical, Fish Meadows medical, Highway 21 accident.)
- Assign or begin patient assessment (9 Line) and first aid. Request additional medical resources on division/branch or across incident. Transmit 9 Line patient information to Communications.
- Determine patient transportation through consultation with line medical personnel and Medical Unit Leader. Consider transportation time, risk to personnel, destination facility and available operational resources. If air transport is chosen, implement the plan for alternative transportation in the event aircraft cannot complete the mission. Order transportation resources through Communications as early as possible.
- Notify Communications as resources arrive and any patient status changes. Names of injured or deceased individuals will not be transmitted on the radio.
- Initiate documentation for future investigation; if a line safety officer is available, assign them to lead documentation. Do not move deceased individuals, gear or personal effects except to accomplish rescue work or protect the safety of others. Obtain written documentation of witnesses. The Unit Log, ICS 214, may be used for the initial documentation, but a subsequent narrative will be required.
- As appropriate, conduct an After Action Review to determine successes, areas to improve and lessons learned.

Prepared by (Medical Unit Leader)	Date/Time	I. Reviewed By (Safety Officer)	Date/Time
Brad Burns 720-537-4953	9/13/17 2015hrs	Tony Rivers SQF1 	9/13/17

Talking points for upcoming rain and snow in the Meyers Sapphire Complex

Forecasted rain and snow at higher elevations for late Thursday through Friday and again on Monday will reduce fire activity.

- The impact on fires on the complex will depend on the amount of precipitation that falls, and whether it falls as rain or lighter snowfall.
 - For example, at 9000 feet an average of eight inches of snow is equivalent to one inch of rain. At lower elevation snow is denser, and will have a higher wetting effect on burning areas.
- The Northern Rockies have gone through one of the hottest and driest fire seasons on record, with fire danger at record levels.
 - Because of this, a significant warm and windy day can dry and heat areas, and reverse wetting effects of rain or snow in a matter of hours.
 - Dry heavy timber, downed branches and logs can take over a month to absorb enough water to saturate them.
 - It may take several storms to result in a “fire season-ending event.”
- When storms result in season-ending events, there is still much work to be done, such as back-hauling equipment and repairing and rehabilitating fire lines. As a result, fire personnel and equipment may remain for a time.

Firefighters and equipment will be protected from cold, wet and windy conditions.

- Safety of firefighters and the public is the number one priority of the Meyers Sapphire Complex.
- Firefighters will avoid slippery fire lines, take extra precautions while driving on slick roads, and may suspend operations entirely during the storm to ensure safety.
- Firefighting crews and equipment are being moved from exposed temporary camps on the fireline to staging areas or base camp until bad weather subsides.
- At fire camp, firefighters have dry and warm places to eat, sleep and shelter.
- Using anti-freeze and other measures will protect fire equipment from freezing.

Firefighters will protect forests, roads and fire areas from additional damage.

- Driving and walking on dirt roads, fire lines, and trails during and after heavy rain and snow events may cause erosion that could degrade habitat for fish and other aquatic animals in local streams and rivers.
- Firefighters will take precautions to prevent erosion. These may extend the time and effort needed to rehabilitate fire lines and fire breaks.



Human Resource Message

Positive Attitude

Giving positive reinforcement to others is one of the best things you can do if you want to see a change in behavior. Finding the good in something is much more effective than focusing on the negative.

The same can be true for you. When you make a mistake do you beat yourself up or do you learn from the mistake? It is all in how you look at it. Keep your attitude positive no matter what or whom you are dealing with, it will make your life much happier and you will accomplish more.

Being positive in a negative situation is not naïve. It's leadership!

A person *without* a sense of humor is like a wagon without springs. It's jolted by every pebble on the road. Henry Ward Beecher



A workplace filled with and driven by employees with positive attitudes--- vibrates continually to the tune of service excellence and passionate team success. Ty Howard

Thank you everyone for great job you're doing! Be safe!

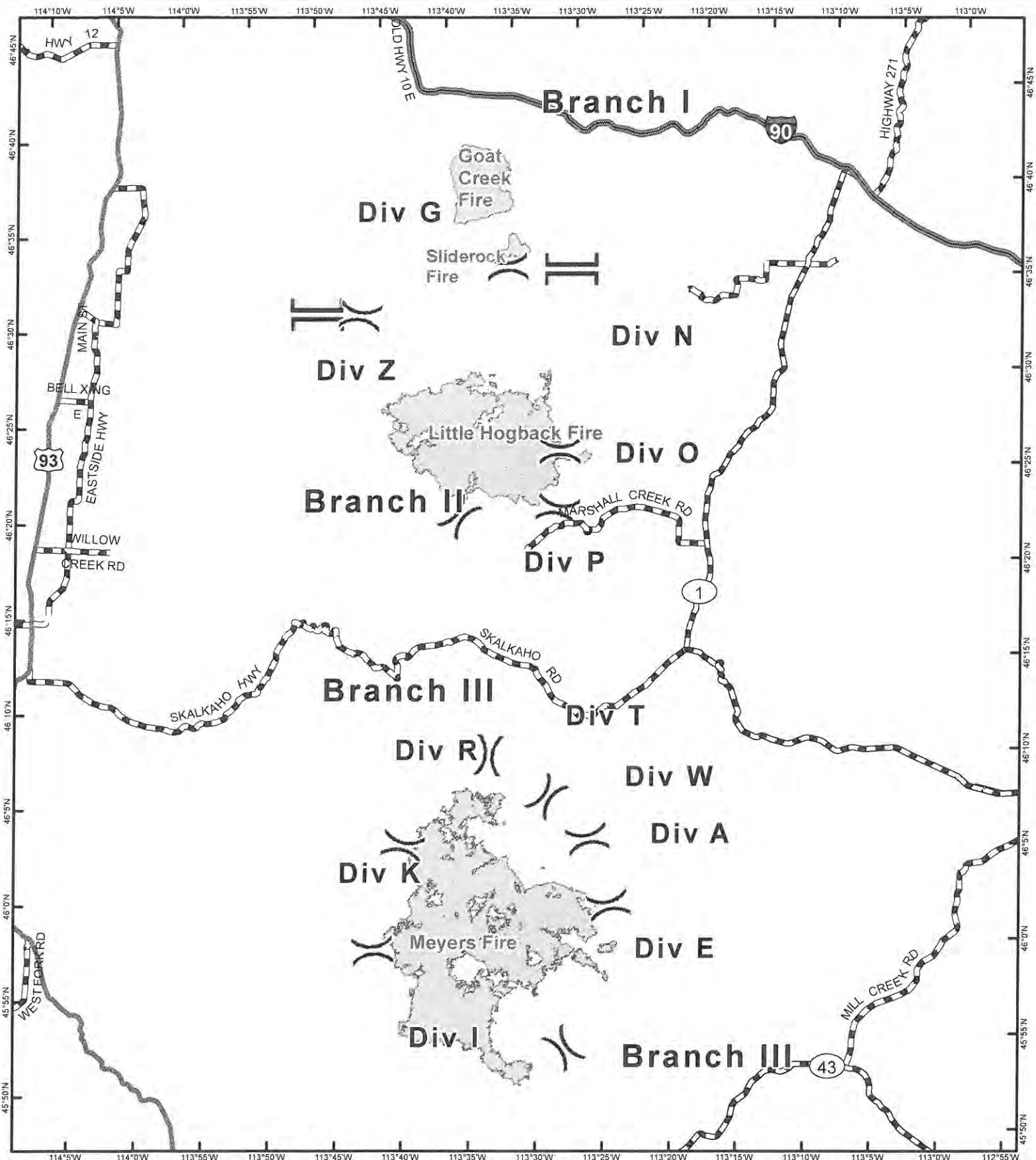
Human Resource Specialists: Linda Buck and Kris Cahoon (t)

DEMOB MESSAGE






If you expect to  , be sure to see DMOB at least 48 to 72 hours before your last shift. If you don't, this could be you!





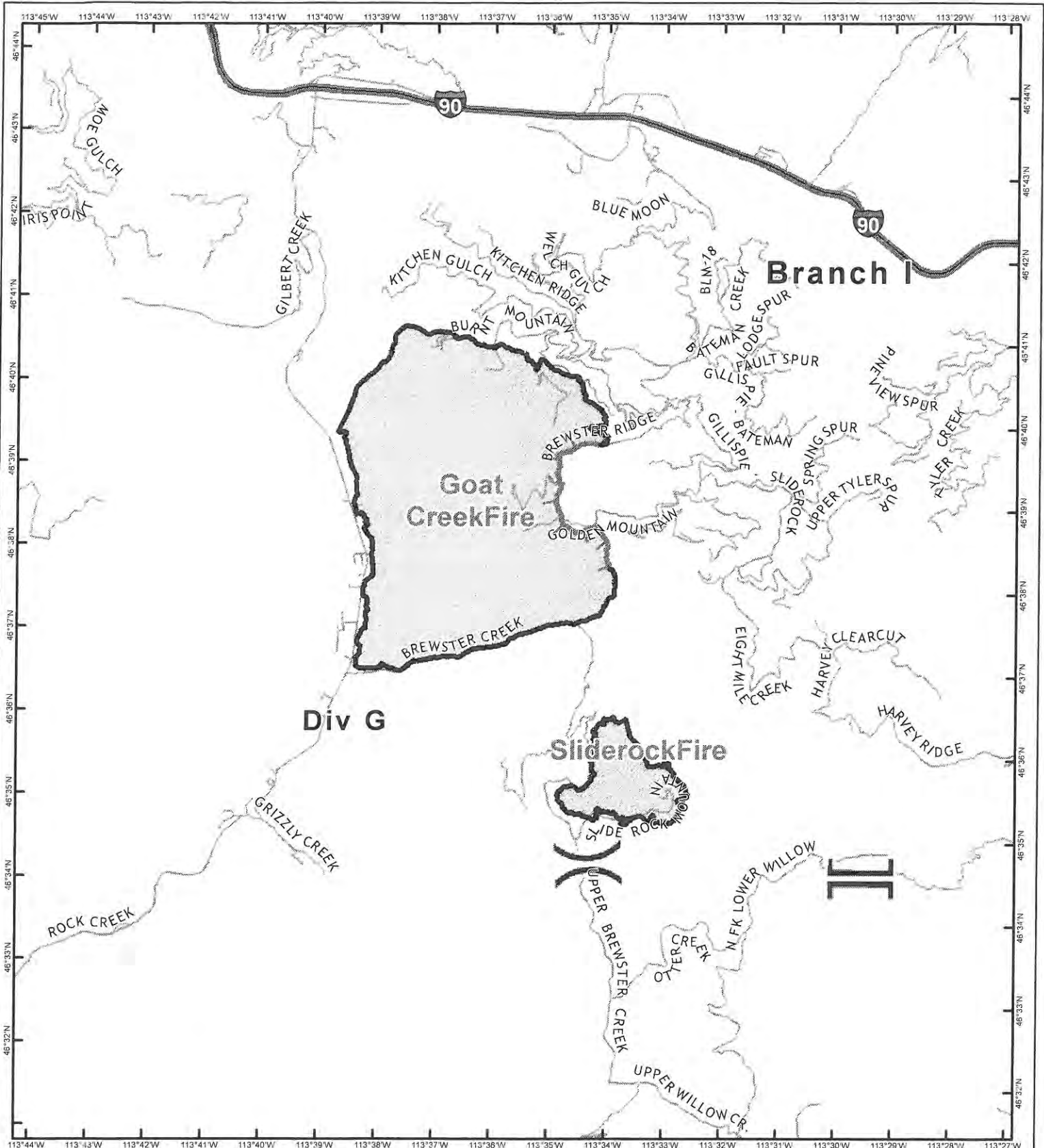
Meyers Sapphire Complex
 MT-BDF-002217
 9/14/2017
 IAP Map - Overview

-  Division Break
-  Branch Break
-  Fire Perimeter

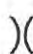



Goat Creek: 8,300 ac
 Sliderock: 901 ac
 Little Hogback: 34,552 ac
 Meyers: 62,034 ac
 Total: 105,787 ac

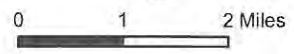
Fire perimeter from
 September 13, 2017 @ 1700



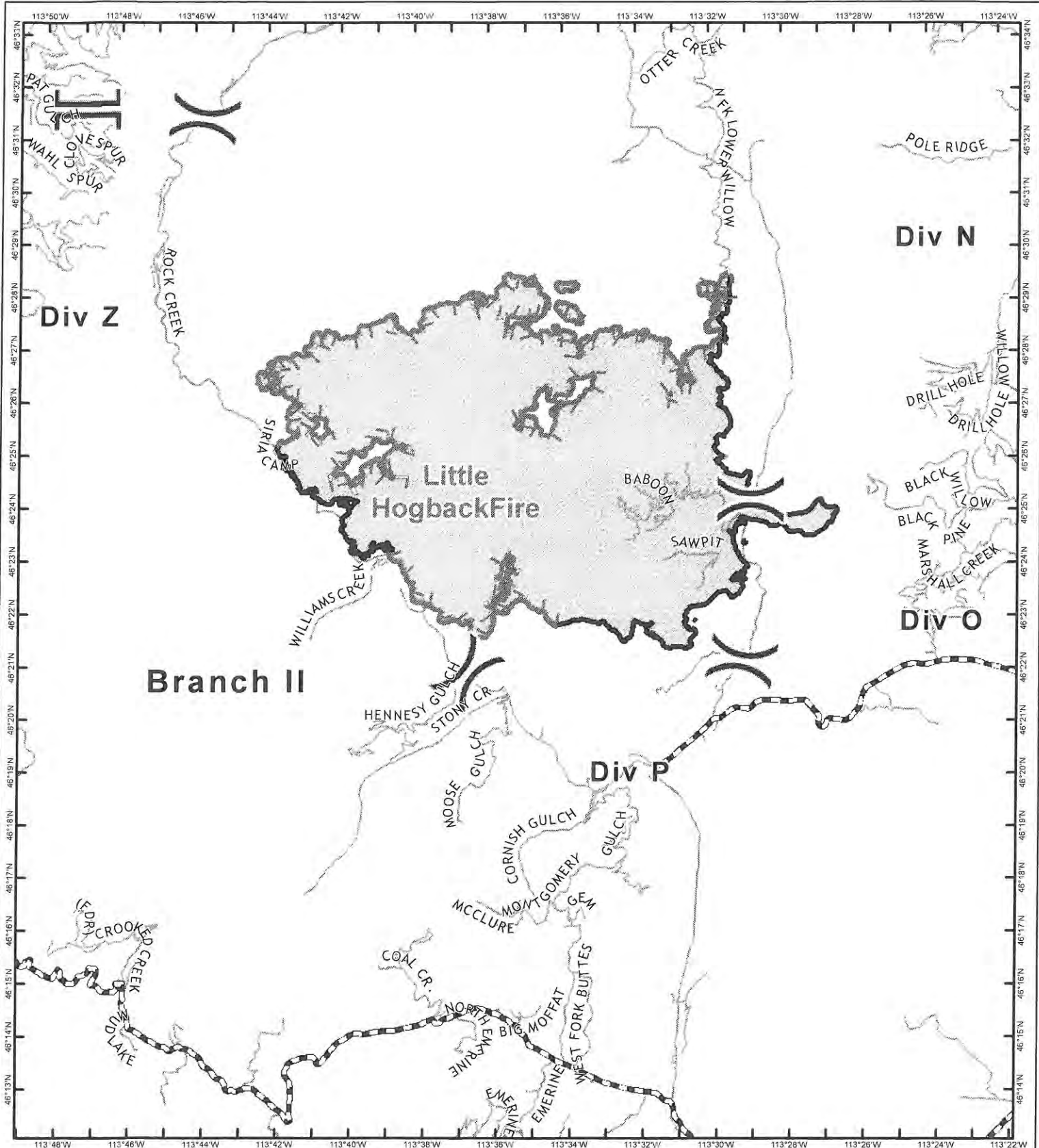


Meyers Sapphire Complex
 MT-BDF-00217
 9/14/2017
Branch I
 Goat Creek Fire: 8,300 ac
 Sliderock Fire: 901 ac

-  Division Break
-  Branch Break
-  Uncontrolled Fire Edge
-  Completed Line



Fire perimeter from 9/13/2017 @ 1700



Meyers Sapphire Complex

MT-BDF-00217

9/14/2017

Branch II

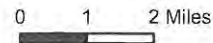
Little Hogback Fire: 34,552 ac

() Division Break

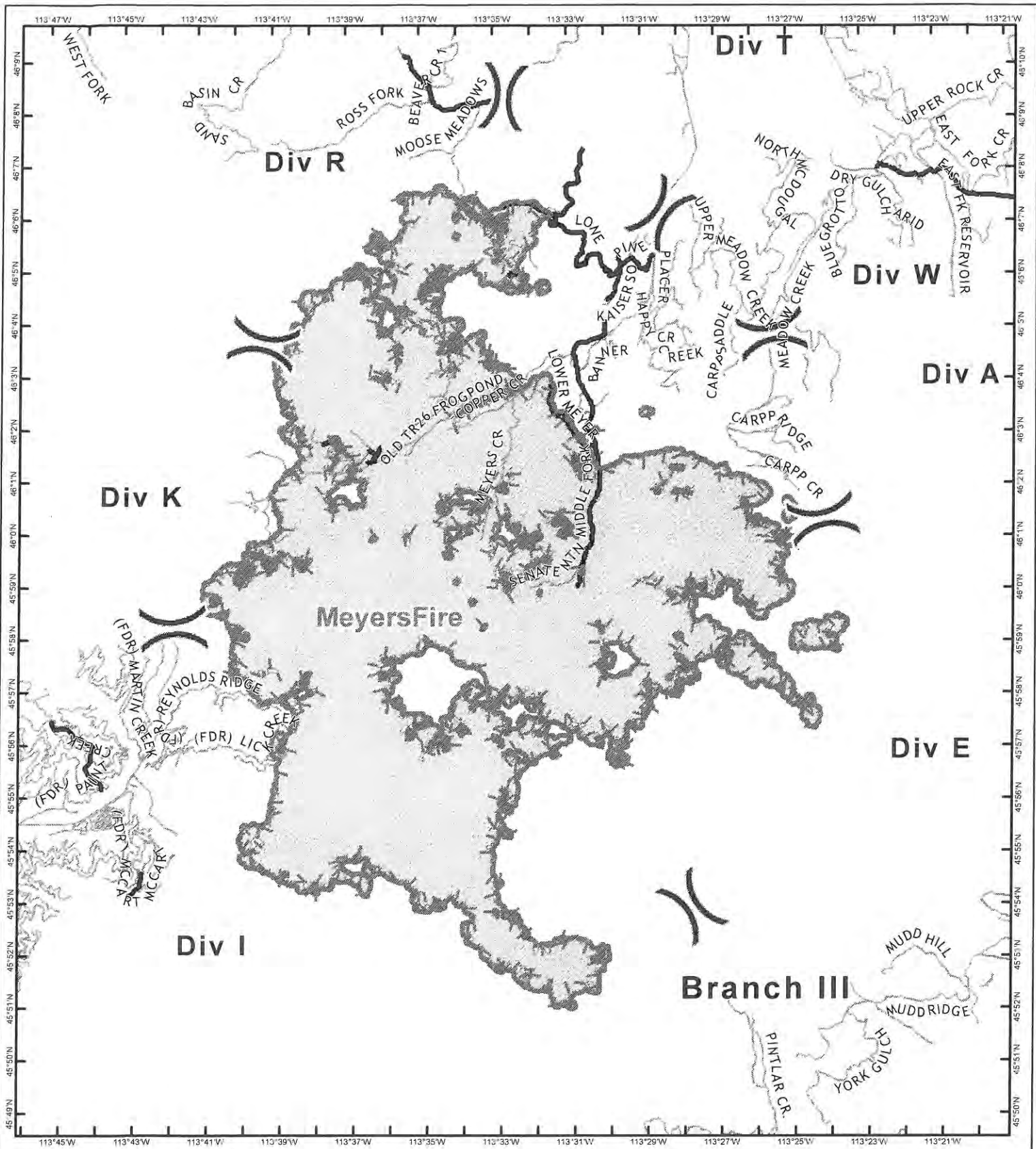
[] Branch Break

┌ Uncontrolled Fire Edge

— Completed Line



Fire perimeter from 9/13/2017 @ 1700



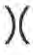
Meyers Sapphire Complex


MT-BDF-00217


9/14/2017


Branch III

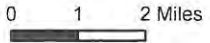
Meyers Fire: 62,034 ac

 Division Break

 Branch Break

 Uncontrolled Fire Edge

 Completed Line



Fire perimeter from 9/13/2017 @ 1700

MEDICAL PLAN (ICS 206 WF)

Medical Incident Report					
FOR ALL MEDICAL EMERGENCIES: IDENTIFY ON SCENE INCIDENT COMMANDER BY NAME AND POSITION AND ANNOUNCE "MEDICAL EMERGENCY" TO INITIATE RESPONSE FROM IMT COMMUNICATIONS/DISPATCH.					
Use items one through nine to communicate situation to communications/dispatch.					
1. CONTACT COMMUNICATIONS/DISPATCH <i>Ex: "Communications, Div. Alpha. Stand-by for Priority Medical Incident Report." (If life threatening request designated frequency be cleared for emergency traffic.)</i>					
2. INCIDENT STATUS: <i>Provide incident summary and command structure.</i>					
Nature of Injury/Illness			<i>Describe the injury</i> <i>(Ex: Broken leg with bleeding)</i>		
Incident Name			<i>Geographic Name + "Medical"</i> <i>(Ex: Trout Meadow Medical)</i>		
Point of Contact			<i>Name of Point of Contact</i>		
Patient Care			<i>Name of Care Provider</i> <i>(Ex: EMT Smith)</i>		
3. INITIAL PATIENT ASSESSMENT: <i>Complete this section for each patient. This is only a brief, initial assessment. Provide additional patient info after completing this 9 Line Report.</i>					
Number of Patients:	Male / Female	Age:	Weight:		
Conscious? <input type="checkbox"/> YES <input type="checkbox"/> NO = MEDEVAC!					
Breathing? <input type="checkbox"/> YES <input type="checkbox"/> NO = MEDEVAC!					
Mechanism of Injury: <i>What caused the injury?</i>					
Lat/Long (Datum WGS84) <i>Ex: N 40° 42.45' x W 123° 03.24'</i>					
4. SEVERITY OF EMERGENCY, TRANSPORT PRIORITY					
SEVERITY			TRANSPORT PRIORITY		
<input type="checkbox"/> URGENT-RED <i>Life threatening injury or illness.</i> <i>Ex: Unconscious, difficulty breathing, bleeding severely, 2° – 3° burns more than 4 palm sizes, heat stroke, disoriented.</i>			Ambulance or MEDEVAC helicopter. Evacuation need is IMMEDIATE.		
<input type="checkbox"/> PRIORITY-YELLOW <i>Serious Injury or illness.</i> <i>Ex: Significant trauma, not able to walk, 2° – 3° burns not more than 1-2 palm sizes.</i>			Ambulance or consider air transport if at remote location. Evacuation may be DELAYED.		
<input type="checkbox"/> ROUTINE-GREEN Not a life threatening injury or illness. <i>Ex: Sprains, strains, minor heat-related illness.</i>			Non-Emergency. Evacuation considered Routine of Convenience.		
5. TRANSPORT PLAN:					
Air Transport: (Agency Aircraft Preferred)					
<input type="checkbox"/> Helispot		<input type="checkbox"/> Short-haul/Hoist		<input type="checkbox"/> Life Flight	
				<input type="checkbox"/> Other	
Ground Transport:					
<input type="checkbox"/> Self-Extract		<input type="checkbox"/> Carry-Out		<input type="checkbox"/> Ambulance	
				<input type="checkbox"/> Other	
6. ADDITIONAL RESOURCE/EQUIPMENT NEEDS:					
<input type="checkbox"/> Paramedic/EMT(s)		<input type="checkbox"/> Crew(s)		<input type="checkbox"/> SKED/Backboard/C-Collar	
<input type="checkbox"/> Burn Sheet(s)		<input type="checkbox"/> Oxygen		<input type="checkbox"/> Trauma Bag	
<input type="checkbox"/> Medication(s)		<input type="checkbox"/> IV/Fluid(s)		<input type="checkbox"/> Cardiac Monitor/AED	
<input type="checkbox"/> Other (i.e. splints, rope rescue, wheeled litter)					
7. COMMUNICATIONS:					
Function	Channel Name/Number	Receive (Rx)	Tone/NAC *	Transmit (Tx)	Tone/NAC *
COMMAND					
AIR-TO-GRND					
TACTICAL					
*(NAC for digital radio system)					
8. EVACUATION LOCATION:					
Lat/Long (Datum WGS84) <i>EX: N 40 42.45' x W 123 03.24'</i>					
Patient's ETA to Evacuation Location:					
Helispot/Extraction Size and Hazards:					
9. CONTINGENCY:					
Considerations: <i>If primary options fail, what actions can be implemented in conjunction with primary evacuation method? Be thinking ahead...</i>				REMEMBER: <i>Confirm ETA's of resources ordered Act according to your level of training Be Alert. Keep Calm. Think Clearly. Act Decisively.</i>	