

# Meyers/Sapphire Complex

## Incident Action Plan

Thursday, September 21st

Operational Period  
0800 – 1800

### Meyers

MT-BDF-002217

USFS P1K7C417 (0102)

FWS FFF2000000K7C40

### Sapphire Complex

MT-LNF-001463

USFS: P1K7XL17 (0116)

IDL: FED11417

FWS FFF2000000K7XL0

DNRC: 767012 DOI: K7XL



## INCIDENT OBJECTIVES (ICS 202)

<b>1. Incident Name:</b>		<b>2. Operational Period:</b> 0700 - 2000	
MEYERS SAPPHIRE		Date/Time From: 09/21/2017 0800 THU	Date/Time To: 09/21/2017 1800 THU
<b>3. Objective(s):</b>			
<p>1) Provide for life first of firefighters and public safety by following sound risk management protocols. Firefighter, public, and aviation safety is our priority in all fire management activities.</p> <p>2) Coordinate suppression repair action with the assigned Resource Advisor prior to implementation.</p> <p>3) Implement suppression repair to approved rehab standards.</p> <p>4) Execute full suppression fire management strategies using direct, indirect, and/or zone protection tactics to guide fires in to man-made or natural barriers, while minimizing firefighter exposure and impacts to critical values at risk.</p>			
<b>4. Operational Period Command Emphasis:</b>			
<p>5) Ensure timely and accurate dissemination and coordination of information regarding fire related activities is provided to the public, cooperators, elected official, and stakeholders.</p> <p>6) Contain costs by using the most cost effective method that does not jeopardize the safety of firefighters and the public.</p> <p>7) Manage the human resources assigned to the fire in a manner that promotes a positive and harassment free work environment and creates a "no tolerance" atmosphere for harassment, alcohol, or illegal drug use.</p>			
<b>General Situational Awareness:</b>			
See attached safety message			
<b>5. Site Safety Plan Required?</b> Yes <input type="checkbox"/> No <input checked="" type="checkbox"/>			
<b>Approved Site Safety Plan(s) Located at:</b>			
<b>6. Incident Action Plan</b> (the items checked below are included in this Incident Action Plan):			
<input checked="" type="checkbox"/> ICS 202	<input type="checkbox"/> ICS 207	Other Attachments: <input type="checkbox"/> _____ <input type="checkbox"/> _____ <input type="checkbox"/> _____ <input type="checkbox"/> _____	
<input checked="" type="checkbox"/> ICS 203	<input type="checkbox"/> ICS 208		
<input checked="" type="checkbox"/> ICS 204	<input checked="" type="checkbox"/> ICS 220		
<input type="checkbox"/> ICS 205	<input checked="" type="checkbox"/> Map/Chart		
<input type="checkbox"/> ICS 205A	<input type="checkbox"/> Weather Forecast/Tides/Currents		
<input type="checkbox"/> ICS 206			
<b>7. Prepared by:</b> JASON W WILLOUGHBY Position/Title: PSC3(T)		Signature:	
<b>8. Approved by Incident Commander:</b> Name: GARY LAMBERT		Signature:	
ICS 202 IAP Page		Date/Time: 09/20/2017 2100	

## ORGANIZATION ASSIGNMENT LIST (ICS 203)

<b>1. Incident Name:</b>		<b>2. Operational Period:</b> 0700 - 2000	
MEYERS SAPPHIRE		Date/Time From: 09/21/2017 0800	Date/Time To: 09/21/2017 1800
		THU	THU
<b>3. Incident Commander(s) and Command Staff:</b>		GROUND SUPPORT UNIT	
IC/UC	GARY LAMBERT WYATT PALIN (T)	FOOD UNIT	
SAFETY OFFICER	GRANT GODBOLT DAVID CARTER	COMMUNICATIONS UNIT	
INFORMATION OFFICER		MEDICAL UNIT	
LIAISON OFFICER		ORDERING MANAGER	
		SECURITY UNIT	
<b>4. Agency/Organization Representative(s):</b>		<b>7. Operations Section:</b>	
Agency/Organization	Name	OPS SECTION CHIEF CHRIS WAVEREK	
B-D NF	MELANY GLOSSA	PLANNING OPS	
B-D NF	ERIC TOMASIK		
BNF	JULIE KING		
BNF	ERIC WINTHERS		
USFS - LOLO NF	JEN HENSICK CHRIS FURR	DIVISION/GROUP	REHAB GROUP KELLY CORNWALL JOHN FRY (T)
DNRC	BRIAN ROBBINS	DIVISION/GROUP	DIV I BITTERROOT JON RUPP (T)
BLM	JOE ASHOR, STEVE HANCOCK	<b>7b. Air Operations Branch:</b>	
USFS - B-D NF	CAMERON RASOR	AIR OPS BRANCH DIRECTOR	
<b>5. Planning Section:</b>		HELIBASE MANAGER	
CHIEF	VICKI STEPHENS JASON WILLOUGHBY (T)	AIR SUPPORT SUPERVISOR	
RESOURCES UNIT		<b>8. Finance/Administration Section:</b>	
DEMOBILIZATION UNIT		CHIEF JAMES MEREDITH	
SITUATION UNIT		DEPUTY	
ITSS		COMPENSATION UNIT	
GIS SPECIALIST		COST UNIT	
FIRE BEHAVIOR ANALYST			
INCIDENT METEOROLOGIST			
TRAINING SPECIALIST			
HUMAN RESOURCE SPECIALIST			
DOCUMENTATION UNIT	PATRICK MCKNIGHT		
B-D READ	MELISSA HENDRICKSON		
BLM READ	LEA TUTTLE		
B-D READ	WADE JEROME		
<b>6. Logistics Section:</b>			
CHIEF	MATT LATRAY		
SERVICE BRANCH DIRECTOR			
SUPPLY UNIT			
FACILITIES UNIT			
<b>9. Prepared By:</b>	Name: JASON W WILLOUGHBY	Position/Title: PSC3(T)	Signature:
ICS 203	IAP Page	Date/Time: 09/20/2017 2000	

**Thursday:** A chance of snow showers before noon, then scattered rain showers. Patchy fog before noon. Otherwise, mostly cloudy, with a high near 45. Light and variable wind becoming west southwest around 6 mph in the morning. Chance of precipitation is 40%. New snow accumulation of less than a half inch possible.

**Thursday Night:** A chance of rain before midnight, then snow likely. Snow level 6400 feet lowering to 5400 feet after midnight. Mostly cloudy, with a low around 28. North wind 3 to 6 mph. Chance of precipitation is 70%. New snow accumulation of less than one inch possible.

**Friday:** Snow likely, mainly before noon. Cloudy, with a high near 39. North northeast wind around 7 mph. Chance of precipitation is 70%. New snow accumulation of 1 to 2 inches possible.

**Friday Night:** A chance of rain before midnight, then a chance of snow. Mostly cloudy, with a low around 21. North northeast wind 5 to 7 mph becoming light and variable after midnight. Chance of precipitation is 40%. New snow accumulation of less than a half inch possible.

**Saturday:** A slight chance of snow before noon, then a slight chance of rain. Partly sunny, with a high near 44. Chance of precipitation is 20%.

**Saturday Night:** Mostly cloudy, with a low around 22.

**Sunday:** Mostly sunny, with a high near 48.

**Sunday Night:** Partly cloudy, with a low around 26.

**Monday:** Mostly sunny, with a high near 50.

**Monday Night:** Partly cloudy, with a low around 30.

**Tuesday:** Mostly sunny, with a high near 53.

**Tuesday Night:** Partly cloudy, with a low around 32.

**Wednesday:** Mostly sunny, with a high near 58.

---

3 Miles WSW Philipsburg MT  
46.31°N 113.36°W (Elev. 5376 ft)

Visit your local NWS office at: <http://www.wrh.noaa.gov/mso>

## Division/Group Assignment List (ICS 204 WF)

<b>1. Incident Name:</b>			<b>3.</b>			
MEYERS SAPPHIRE			<b>HOG BACK</b>	<b>Division/Group:  REHAB GROUP</b>		
<b>2. Operational Period:</b> 0700 - 2000						
Date/Time From: 09/21/2017 0800	THU	Date/Time To: 09/21/2017 1800				
<b>4. Operations Personnel</b>						
<b>OPERATIONS CHIEF</b>				<b>DIVISION/GROUP SUPERVISOR</b>		
				KELLY S CORNWALL JOHN FRY (T)		
<b>PLANNING OPS</b>				<b>AIR OPERATIONS DIRECTOR</b>		
<b>5. Resources Assigned this Period</b>						
Strike Team / Task Force / Resource Designator	LWD	Leader	Number Persons	Drop Off PT./Time	Pick Up PT./Time	
O-807 TFLD	09/29	JAMES BARBERI	1	/0700	/2000	
O-451 HEQB	09/23	ANTHONY MOORE	2	/0700	/2000	
O-726 ICPI (T)	10/01	TAMARA MAIOLIE	1	/0700	/2000	
E-251 LOG LOADER BRYANT W/LOWBOY	10/01	BRYCE RASMUSSEN	2	/0700	/2000	
E-44 SKG3 SLACK	09/29	JAMIE SLACK	1	/0700	/2000	
E-40 SKDS HALL WOOD PROCESSING	09/24	JEFF WEER	1	/0700	/2000	
E-70 DOZ2 MADDEN TRUCKING	09/29	MOSES MADDEN	2	/0700	/2000	
E-420 EXCA T1 W/LOWBOY	10/03	CHARLES ROBEREC	2	/0700	/2000	
E-419 EXCA T2	09/27	DOUG CROCKETT	1	/0700	/2000	
O-830 TFLD	09/29	TRACY SPANG	1	/0700	/2000	
O-529 HEQB (T)	09/22	JASON WALKER	1	/0700	/2000	
E-242 LOG TRUCK JOE THOMAS	09/28	TERRELL THOMAS	1	/0700	/2000	
E-260 SELF LOADING LOG TRUCK	09/24	JUSTIN HULFORD	1	/0700	/2000	
E-267 DUMP TRUCK ALL TERRAIN TRUCKING	10/05	JAMIE BISHOP	1	/0700	/2000	
O-122 FAL 1 TIMBER TRAIL	10/04	SEITZ & CHITWOOD	2	/0700	/2000	
E-233 EXCA T2 DS JR TRUCKING W/LOWBOY	09/28	KERRY CROSS	2	/0700	/2000	
E-243 EXCA T1 ST ONGE W/LOWBOY	10/01	JOHNNER BOUER	2	/0700	/2000	
E-253 EXCA TIMBER TRAIL W/ LOWBOW	09/30	JEFF HOLLIDAY	2	/0700	/2000	
E-263 LOG LOADER RUSS REED LOGGING W/LOWBOY	10/04	STEVE KINZEL	2	/0700	/2000	
<b>8. Division/Group Communication Summary</b>						
Function	Channel	RX Frequency N/W	RX Tone/NAC	TX Frequency N/W	TX Tone/NAC	Mode
COMMAND	6	171.0000N		170.3500N	136.5	A
COMMAND	7	171.0000N		170.3500N	146.2	A
TACTICAL	2	168.2000N	114.8	168.2000N	114.8	A
AIR TO GROUND	10	166.9000N		166.9000N	110.9	A
AIR GUARD	16	168.6250N		168.6250N	110.9	A
<b>9. Prepared By (Resource Unit Leader)</b>		<b>Approved By (Planning Section Chief)</b>		<b>Date</b>	<b>Time</b>	
JASON W WILLOUGHBY PSC3(T)		GARY LAMBERT		09/20/2017	2100	

## Division/Group Assignment List (ICS 204 WF)

<b>1. Incident Name:</b>			<b>3.</b>			
MEYERS SAPPHIRE			<b>HOG BACK</b>	<b>Division/Group:  REHAB GROUP</b>		
<b>2. Operational Period:</b> 0700 - 2000						
Date/Time From: 09/21/2017 0800 THU	Date/Time To: 09/21/2017 1800 THU					
<b>4. Operations Personnel</b>						
<b>OPERATIONS CHIEF</b>			<b>DIVISION/GROUP SUPERVISOR</b>	KELLY S CORNWALL JOHN FRY (T)		
<b>PLANNING OPS</b>			<b>AIR OPERATIONS DIRECTOR</b>			
<b>5. Resources Assigned this Period</b>						
Strike Team / Task Force / Resource Designator	LWD	Leader	Number Persons	Drop Off PT./Time	Pick Up PT./Time	
O-451 FAL1 INDEPENDENT LOG CO.	09/23	DAX MOORE	1	/0700	/2000	
O-548 SOF2	09/23	DAVID CARTER	1	/0700	/2000	
<b>6. Control Operations/Work Assignments:</b>						
Task: Complete all suppression repair to rehab standards						
Purpose: To achieve rehab standards						
End State: Return fire impacted areas to pre-fire conditions						
<b>7. Special Instructions:</b>						
<b>8. Division/Group Communication Summary</b>						
Function	Channel	RX Frequency N/W	RX Tone/NAC	TX Frequency N/W	TX Tone/NAC	Mode
COMMAND	6	171.0000N		170.3500N	136.5	A
COMMAND	7	171.0000N		170.3500N	146.2	A
TACTICAL	2	168.2000N	114.8	168.2000N	114.8	A
AIR TO GROUND	10	166.9000N		166.9000N	110.9	A
AIR GUARD	16	168.6250N		168.6250N	110.9	A
<b>9. Prepared By (Resource Unit Leader)</b>			<b>Approved By (Planning Section Chief)</b>		<b>Date</b>	<b>Time</b>
JASON W WILLOUGHBY PSC3(T)			GARY LAMBERT		09/20/2017	2100



## Division/Group Assignment List (ICS 204 WF)

<b>1. Incident Name:</b>		<b>3.</b>				
MEYERS SAPPHIRE		<b>I GOAT</b>		<b>G</b>		
<b>2. Operational Period:</b> 0700 - 2000						
Date/Time From: 09/21/2017 0800 THU	Date/Time To: 09/21/2017 1800 THU					
<b>4. Operations Personnel</b>						
OPERATIONS CHIEF		BRANCH DIRECTOR				
DIVISION/GROUP SUPERVISOR		AIR ATTACK SUPERVISOR				
<b>5. Resources Assigned this Period</b>						
Strike Team / Task Force / Resource Designator	LWD	Leader	Number Persons	Drop Off PT./Time	Pick Up PT./Time	
<b>6. Control Operations/Work Assignments:</b>						
Task: Complete all suppression repair to rehab standards						
Purpose: To achieve rehab standards						
End State: Return fire impacted areas to pre-fire conditions						
<b>7. Special Instructions:</b>						
<b>8. Division/Group Communication Summary</b>						
Function	Channel	RX Frequency N/W	RX Tone/NAC	TX Frequency N/W	TX Tone/NAC	Mode
TACTICAL	1	168.0500N	114.8	168.0500N	114.8	A
COMMAND	6	171.0000N		170.3500N	136.5	A
AIR TO GROUND	10	166.9000N		166.9000N	110.9	A
AIR GUARD	16	168.6250N		168.6250N	110.9	A
<b>9. Prepared By (Resource Unit Leader)</b>		<b>Approved By (Planning Section Chief)</b>		<b>Date</b>	<b>Time</b>	
JASON W WILLOUGHBY PSC3(T)		GARY LAMBERT		09/20/2017	2100	

## Division/Group Assignment List (ICS 204 WF)

<b>1. Incident Name:</b>		<b>3.</b>				
MEYERS SAPPHIRE		<b>Branch:</b>		<b>Division/Group:</b>		
<b>2. Operational Period:</b> 0700 - 2000		<b>III MEYER</b>		<b>I</b>		
Date/Time From: 09/21/2017 0800 THU	Date/Time To: 09/21/2017 1800 THU					
<b>4. Operations Personnel</b>						
<b>OPERATIONS CHIEF</b>		RICHARD GRIFFIN		<b>DIVISION/GROUP SUPERVISOR</b>		JON RUPP (T)
<b>PLANNING OPS</b>				<b>AIR OPERATIONS DIRECTOR</b>		
<b>5. Resources Assigned this Period</b>						
Strike Team / Task Force / Resource Designator		LWD	Leader	Number Persons	Drop Off PT./Time	Pick Up PT./Time
TFLD			RYAN WOIRHAYE	1	/0700	/2000
TFLD (T)			CORY RENNAKER	1	/0700	/2000
CREW TYPE 2 BUZZARD CREEK			PATRICK OWENS	21	/0700	/2000
<b>6. Control Operations/Work Assignments:</b>						
Task: Complete all suppression repair to rehab standards						
Purpose: To achieve rehab standards						
End State: Return fire impacted areas to pre-fire conditions						
<b>7. Special Instructions:</b>						
<b>8. Division/Group Communication Summary</b>						
Function	Channel	RX Frequency N/W	RX Tone/NAC	TX Frequency N/W	TX Tone/NAC	Mode
COMMAND	7	171.0000N		170.3500N	146.2	A
TACTICAL	3	168.6000N	114.8	168.6000N	114.8	A
AIR TO GROUND	10	166.9000N		166.9000N	110.9	A
AIR GUARD	16	168.6250N		168.6250N	110.9	A
<b>9. Prepared By (Resource Unit Leader)</b>			<b>Approved By (Planning Section Chief)</b>		<b>Date</b>	<b>Time</b>
JASON W WILLOUGHBY PSC3(T)			GARY LAMBERT		09/20/2017	2100



# INCIDENT RADIO COMMUNICATIONS PLAN (ICS 205)

1. Incident Name:		2. Date/Time Prepared:		3. Operational Period:	
MEYERS SAPPHIRE		Date:	Time:	Date/Time From:	Date/Time To:
				09/21/2017 0800	09/21/2017 1800
				THU	THU

4. Basic Radio Channel Use:										
Zone Group	Ch #	Function	Channel Name/Trunked Radio System Talkgroup	Assignment	RX Freq	RX Tone/NAC	TX Freq	TX Tone/NAC	Mode (A,D, or M)	Remarks
SAPPHIRE	1	TACTICAL	TAC 1	REHAB GROUP	168.0500N	123.0	168.0500N	123.0	A	BRANCH I
SAPPHIRE	2	TACTICAL	TAC 2	DIV Z	168.2000N	123.0	168.2000N	123.0	A	
SAPPHIRE	3	TACTICAL	TAC 3	DIV N/O/P	168.6000N	123.0	168.6000N	123.0	A	
SAPPHIRE	4	TACTICAL	TAC 4	STAGING	168.7250N	123.0	168.7250N	123.0	A	
SAPPHIRE	5	TACTICAL	PROJECT		170.5000N		170.5000N		A	
TYPE 3	6	COMMAND	HENDERSON MTN	ALL DIVISIONS	171.000N		170.3500N	136.5	A	
SAPPHIRE	7	COMMAND	B-D EMERINE	ALL DIVISIONS	171.0000N	123.0	170.3500N	123.0	A	
SAPPHIRE	8	COMMAND	ORANGE	ALL DIVISIONS	151.4000N		151.4000N	156.7	A	
SAPPHIRE	9	LOGISTICS	TAN	ALL DIVISIONS	155.3400N		155.3400N	156.7	A	AIR AMBULANCE
SAPPHIRE	10	AIR TO GROUND	A/G 29	ALL DIVISIONS	166.9000N		166.9000N	110.9	A	AIR TO GROUND PRIMARY
SAPPHIRE	11	AIR TO GROUND	A/G SEC	ALL DIVISIONS	164.7500N		164.7500N		A	AIR TO GROUND SECONDARY
SAPPHIRE	12	NONE			155.3400N	123.0	155.3400N	156.7	A	AIR AMBULANCE
SAPPHIRE	13	NONE			164.7000N		164.1000N	131.8	A	LOLO FOREST RPT
SAPPHIRE	14	NONE			169.1500N		169.1500N		A	COMMUNICATE WITH AIR ATTACK
SAPPHIRE	15	NONE			169.0875N		169.0875N		A	
SAPPHIRE	16	AIR GUARD	AIRGRD	ALL DIVISIONS	168.6250N		168.6250N	110.9	A	AIR EMERGENCY OR INITIAL CONTACT
TYPE 3	1	TACTICAL	TAC 1	GOAT	168.0500N	114.8	168.0500N	114.8	A	BRANCH I

6. Prepared By		Signature:	
(Communications Unit Leader)			
Name:		Date/Time:	


  

ICS 205	
IAP Page	



## HEALTH AND SAFETY MESSAGE

*“We don’t plan on luck to be safe, we plan on good risk management and good decisions”....the Red Team*

<b>INCIDENT:</b> Meyers-Sapphire Complex	<b>DATE:</b> September 21– 24 <sup>th</sup> , 2017
<b>Major Hazards and Risks:</b> Transition, Driving, Suppression Rehab, Weather	
<p><b>Transition:</b> Wednesday is a transition day for all resources from the Type 1 Organization to the Type 3 Organization. Please continue to maintain your situational awareness during all phases of the transition. <i>If you are not sure about something, ask questions.</i> Always know what your assignment is, who you are working for and the end state.</p> <p><b>Driving on the Incident:</b> Rain and snow showers are predicted for the next several days, most of the <i>major highways and forest roads will be slick. Be alert for other vehicles</i>, adjust your following distances and speed as needed. Roads on incident will continue to be hazardous with the predicted rainfall.</p> <p><b>Suppression Rehab:</b> As rehab operations continue, remember to be aware of all the usual <i>slips, trips, and falls</i> hazards on wet surfaces, but also <i>maintain your situational awareness</i> around all of the <i>heavy equipment</i> during operations and transport on local roads.</p> <p><b>Weather:</b> Weather conditions will be <i>a major hazard</i> throughout the week. Remember to always keep your clothing dry, avoid over heating when working in cold temperatures and utilize good <i>sound risk management</i> if thunderstorms are predicted during operational periods.</p>	
	<p style="text-align: center;"><b>Finish strong</b> Keep your eye on the goal</p> <ul style="list-style-type: none"><li>➤ Don't look down</li><li>➤ Slow and steady wins the race</li><li>➤ Either you run the day or the day runs you. Jim Rohn</li><li>➤ It does not matter how slowly you go if you do not stop. Confucius</li><li>➤ What you do today can affect all of your tomorrows. Ralph Marston</li></ul>

Safety Officers: Dave Carter, Grant Godbolt

AIR OPERATIONS SUMMARY		Prepared By: Bart Kicklighter AOB(D)(T)		Prepared Date/Time: 9/16/2017 1800			
1. INCIDENT NAME:		2. OPERATIONAL PERIOD DATE:		START TIME:	END TIME:		
Meyers Sapphire Complex		9/17-19/2017		700	2200		
3. REMARKS (Safety Notes, Hazards): This is a three day plan for aviation operations. Current plan is to utilize the three helicopters on 9/17 to complete all backhaul and sling missions. At end of shift Helicopter 7HE will be released; and Helicopters 7MC and 1DR will relocate to Philipsburg Airport.		4. READY ALERT AIRCRAFT Incident Medevac Resources: 7HE AS350B3 (litter-capable) 407MC Bell 407 (backboard only) Litter Kit at Meyers HB SHORTHAUL Order via A/C Desk. ** 401HQ @ Lincoln, MT ** Hoist/NVG: 429MJ Two Bear Air @ Kalispell A/C Medical (Tan): 155.3400N Tone TX 156.7 A/G Hospital (White): 155.2800		5. Airspace Information: Meyers TFR: 7/5927 Freq: 121.0750 Radius: POLYGON Altitude: 11,000 *TFR will be closed out end of shift 09/17			
<b>Alert: Frequencies will be changing to the Forest's frequencies.</b>		<b>THREE DAY PLAN</b>					
NAME	PHONE #	7. FREQUENCIES		VHF-AM	VHF-FM		
<b>7a. Sapphire Meyers Complex</b>							
Air Ops Branch Director	678-699-3266	Sapphire A/G PRIMARY A/G 1			169.1500		
Air Ops Branch Director (Trainee)	828-460-6559	Sapphire A/G SECOND A/G 2			169.0875		
Air Support Group Supervisor	720-537-4972	Sapphire A/A FW					
Air Ops Yurt Phone	406-859-9129	Sapphire A/A RW					
<b>7b. Meyers Freqs</b>							
Meyers Helibase Manager	720-537-4928	Meyers A/G PRIMARY (A/G 1)			169.2000		
Meyers Helibase Trailer Phone	406-859-9133	Meyers A/G SECOND (A/G 2)			164.7500		
		Meyers A/A FW		121.0750			
		Meyers A/A RW		126.6250			
		Command - Helibase to ATGS		168.075 Rx - 170.425 Tx	114.8		
<b>7c. Common Freqs</b>							
Missoula (Lolo NF)	406-829-7060	Deck			163.1000		
Dillon (B-D NF)	406-683-3975/3827	Takeoff/Landing (TOLC)			172.65		
<b>8. AERIAL SUPERVISION</b>							
FAA #	REQ #	TY	MAKE/MODEL	BASE	START	AVAIL	REMARKS
							National Flt Follow
							Air Guard
							168.625 Tx/Rx 110.9
							166.9000N or 151.2200 Rx/Tx

Signature: /s/ Lynne Howard, AOB(D)

NOTE: Air Tactical and Platforms TBD on Case By Case Need

**7d. Initial Attack Freqs**

9. HELICOPTERS							7d. Initial Attack Freqs	
FAA N#	REQ #	TY	MAKE/ MODEL	BASE	BRIEF	AVAIL	REMARKS	
111DR	A-87	2	B-205	Meyers	800	830	Restricted	171.425 RX/TX TT 131.8
7HE	A-14	3	AS-350B3	H-31	800	830	Standard; litter-capable	171.000 RX/TX TT 141.3
407MC	A-69	3	Bell 407	Meyers	800	830	Standard; backboard only	132.7000
								166.9000 N
								168.3875 N
								168.4875 N
								168.6500N 110.9 Rx/Tx
								166.5000N
								164.9125N 123.0 Tx
								166.7500N
								Rx 168.3875 Tx 168.3875
								125.175

**NOTE: Italicized Aircraft/Req are on Meyers Order; Others are Sapphire**

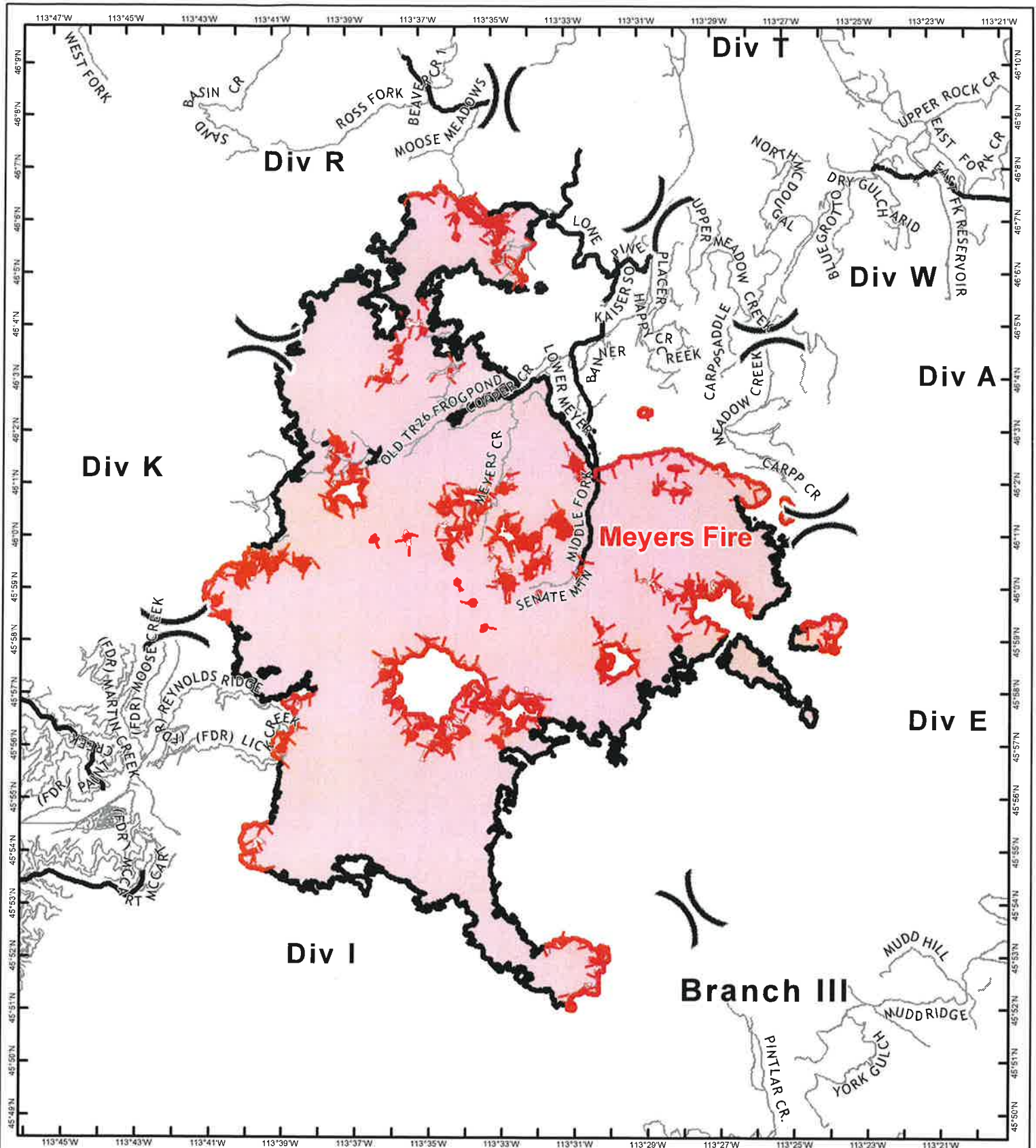
**10. MISSIONS - MEYERS**

Type	TIME	From	To
Repeater retrieval			
Division R/T - sling mission for foam tank and 2000' of hose and fold-a-tank, requires helitack			

**10. MISSIONS - SAPPHIRE**

Type	TIME	From	To
Repeater retrieval			
Division P - possible sling mission of large pumpkin, requires helitack			





**Meyers Sapphire Complex**  
**MT-BDF-00217**  
**September 17-19, 2017**

**Branch III**  
 Meyers Fire: 62,034 ac

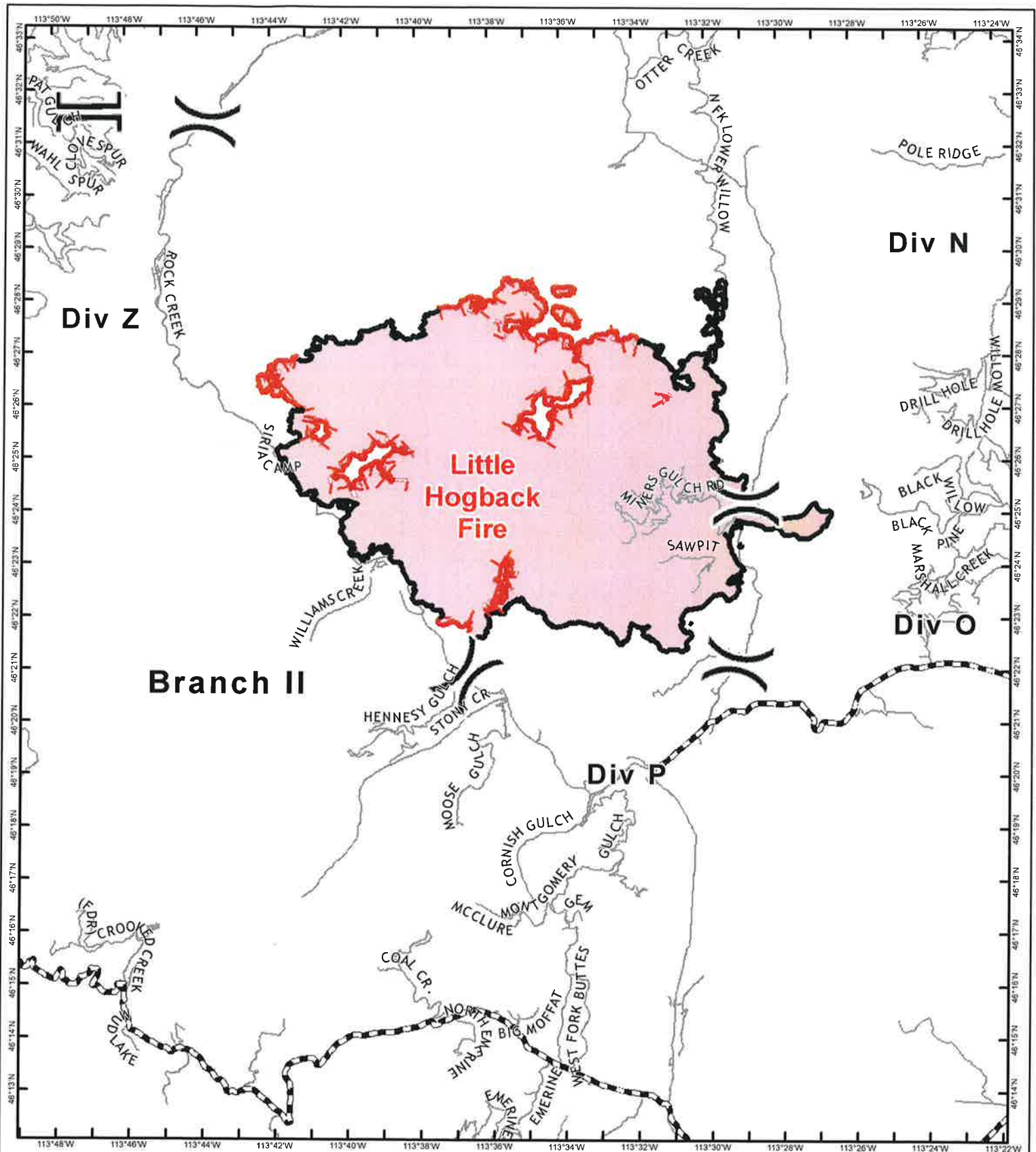
( ) Division Break  
 || Branch Break

— Uncontrolled Fire Edge  
 — Completed Line



0 1 2 Miles



Fire perimeter from 9/16/2017 @ 1000



**Meyers Sapphire Complex**  
**MT-BDF-00217**  
**September 17-19, 2017**

**Branch II**  
 Little Hogback Fire: 34,552 ac

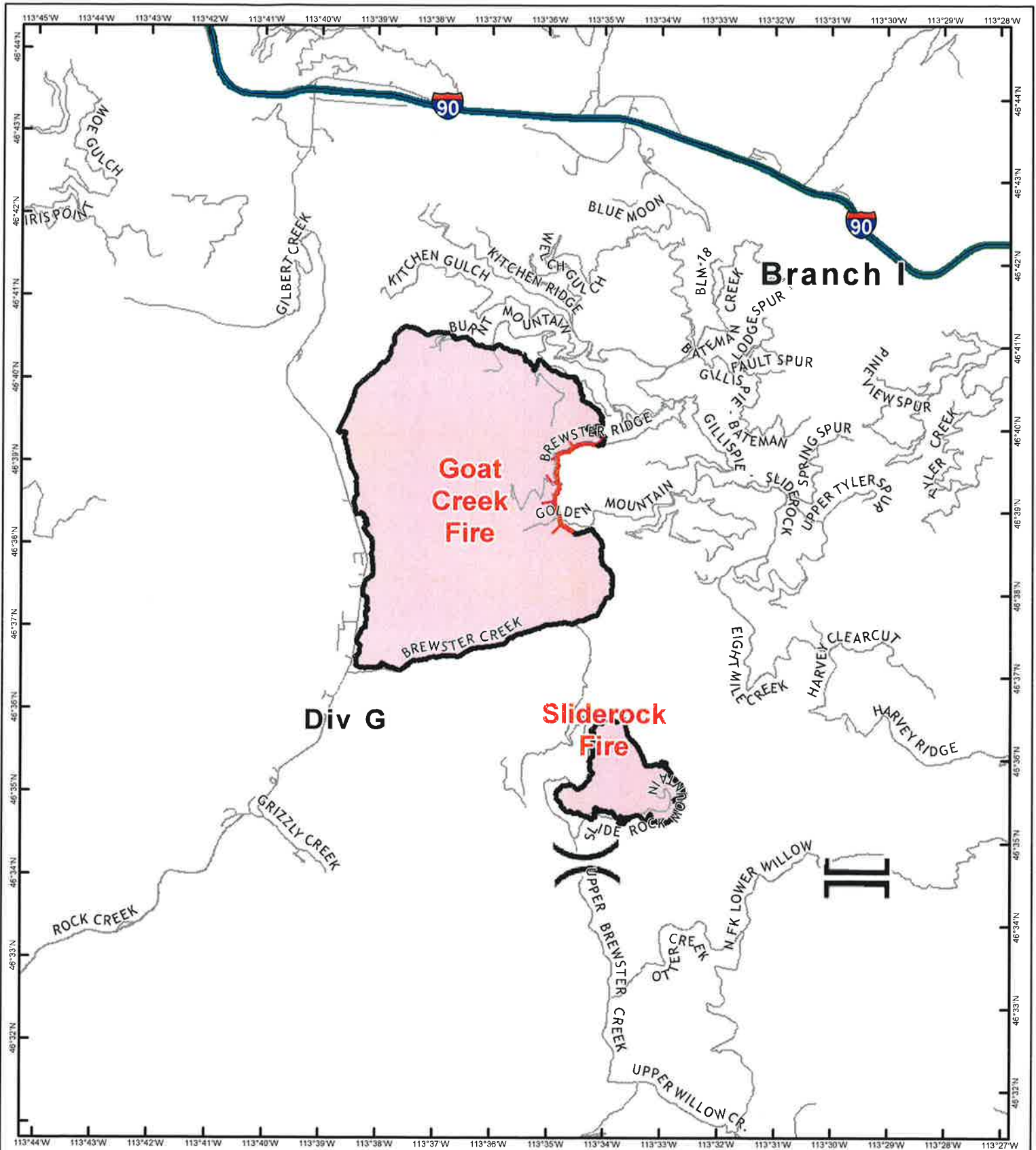
(X) Division Break  
 (||) Branch Break

 Uncontrolled Fire Edge  
 Completed Line



Fire perimeter from 9/16/2017 @ 1000





**Meyers Sapphire Complex**  
**MT-BDF-00217**  
**September 17-19, 2017**

**Branch I**  
 Goat Creek Fire: 8,300 ac  
 Sliderock Fire: 901 ac

( ) Division Break  
 || Branch Break

— Uncontrolled Fire Edge  
 — Completed Line



0 1 2 Miles

Fire perimeter from 9/16/2017 @ 1000

### IMT 3 Phone List

First	Phone	Position
Wyatt Palin	406-239-3824	Incident Commander (T)
Gary Lambert	406-360-7302	Incident Commander
Chris Waverick	208-993-0995	Operations
Grant Godbolt	406-491-2562	Safety-Meyers
Keith Wolferman	406-544-3323	Safety-Hogback
Matt LaTray	406-865-0452	Logistics
Vicki Stephens	406-334-3266	Plans
Jason Willoughby	406-490-6761	Plans (T)
Lauren McKeever	307-699-0025	Public Information
Chris Hinkey	406-865-0189	HEQB
Monica Thomas	406-546-0695	HEQB
Charles Savioia	406-552-2639	
Travis Parker	406-212-3743	
Richard Griffin	406-925-1951	Bitterroot Operations
Jesse Kurpius	406-274-2681	Lolo FMO
David Williams	406-531-8552	Lolo AFMO
Wade Jerome	208-512-5097	Hogback READ
Lea Tuttle	406-830-8385	BLM READ
Ross Parker	651-235-3275	Timber Strike Team



# MEDICAL PLAN (ICS 206 WF)

Medical Incident Report					
<b>FOR ALL MEDICAL EMERGENCIES: IDENTIFY ON SCENE INCIDENT COMMANDER BY NAME AND POSITION AND ANNOUNCE "MEDICAL EMERGENCY" TO INITIATE RESPONSE FROM IMT COMMUNICATIONS/DISPATCH.</b>					
<b>Use items one through nine to communicate situation to communications/dispatch.</b>					
<b>1. CONTACT COMMUNICATIONS/DISPATCH</b> <i>Ex: "Communications, Div. Alpha. Stand-by for Priority Medical Incident Report." (If life threatening request designated frequency be cleared for emergency traffic.)</i>					
<b>2. INCIDENT STATUS:</b> <i>Provide incident summary and command structure.</i>					
<b>Nature of Injury/Illness</b>	<i>Describe the injury (Ex: Broken leg with bleeding)</i>				
Incident Name	<i>Geographic Name + "Medical" (Ex: Trout Meadow Medical)</i>				
Point of Contact	<i>Name of Point of Contact</i>				
Patient Care	<i>Name of Care Provider (Ex: EMT Smith)</i>				
<b>3. INITIAL PATIENT ASSESSMENT:</b> <i>Complete this section for each patient. This is only a brief, initial assessment. Provide additional patient info after completing this 9 Line Report.</i>					
Number of Patients:	Male / Female	Age:	Weight:		
Conscious? <input type="checkbox"/> YES <input type="checkbox"/> NO = MEDEVAC					
Breathing? <input type="checkbox"/> YES <input type="checkbox"/> NO = MEDEVAC					
Mechanism of Injury: <i>What caused the injury?</i>					
Lat/Long (Datum WGS84) <i>Ex: N 40° 42.45' x W 123° 03.24'</i>					
<b>4. SEVERITY OF EMERGENCY, TRANSPORT PRIORITY</b>					
SEVERITY			TRANSPORT PRIORITY		
<input type="checkbox"/> <b>URGENT-RED Life threatening injury or illness.</b> <i>Ex: Unconscious, difficulty breathing, bleeding severely, 2° - 3° burns more than 4 palm sizes, heat stroke, disoriented.</i>			Ambulance or MEDEVAC helicopter. Evacuation need is <b>IMMEDIATE.</b>		
<input type="checkbox"/> <b>PRIORITY-YELLOW Serious Injury or illness.</b> <i>Ex: Significant trauma, not able to walk, 2° - 3° burns not more than 1-2 palm sizes.</i>			Ambulance or consider air transport if at remote location. Evacuation may be <b>DELAYED.</b>		
<input type="checkbox"/> <b>ROUTINE-GREEN</b> Not a life threatening injury or illness. <i>Ex: Sprains, strains, minor heat-related illness.</i>			Non-Emergency. Evacuation considered <b>Routine of Convenience.</b>		
<b>5. TRANSPORT PLAN:</b>					
<b>Air Transport:</b> (Agency Aircraft Preferred)					
<input type="checkbox"/> Helispot		<input type="checkbox"/> Short-haul/Hoist		<input type="checkbox"/> Life Flight	
<input type="checkbox"/> Other					
<b>Ground Transport:</b>					
<input type="checkbox"/> Self-Extract		<input type="checkbox"/> Carry-Out		<input type="checkbox"/> Ambulance	
<input type="checkbox"/> Other					
<b>6. ADDITIONAL RESOURCE/EQUIPMENT NEEDS:</b>					
<input type="checkbox"/> Paramedic/EMT(s)		<input type="checkbox"/> Crew(s)		<input type="checkbox"/> SKED/Backboard/C-Collar	
<input type="checkbox"/> Burn Sheet(s)		<input type="checkbox"/> Oxygen		<input type="checkbox"/> Trauma Bag	
<input type="checkbox"/> Medication(s)		<input type="checkbox"/> IV/Fluid(s)		<input type="checkbox"/> Cardiac Monitor/AED	
<input type="checkbox"/> Other (i.e. splints, rope rescue, wheeled litter)					
<b>7. COMMUNICATIONS:</b>					
Function	Channel Name/Number	Receive (Rx)	Tone/NAC *	Transmit (Tx)	Tone/NAC *
COMMAND					
AIR-TO-GRND					
TACTICAL					
*(NAC for digital radio system)					
<b>8. EVACUATION LOCATION:</b>					
Lat/Long (Datum WGS84) <i>EX: N 40 42.45' x W 123 03.24'</i>					
Patient's ETA to Evacuation Location:					
Helispot/Extraction Size and Hazards:					
<b>9. CONTINGENCY:</b>					
<b>Considerations:</b> <i>If primary options fail, what actions can be implemented in conjunction with primary evacuation method? Be thinking ahead...</i>				<b>REMEMBER:</b> Confirm ETA's of resources ordered Act according to your level of training <b>Be Alert. Keep Calm. Think Clearly. Act Decisively.</b>	