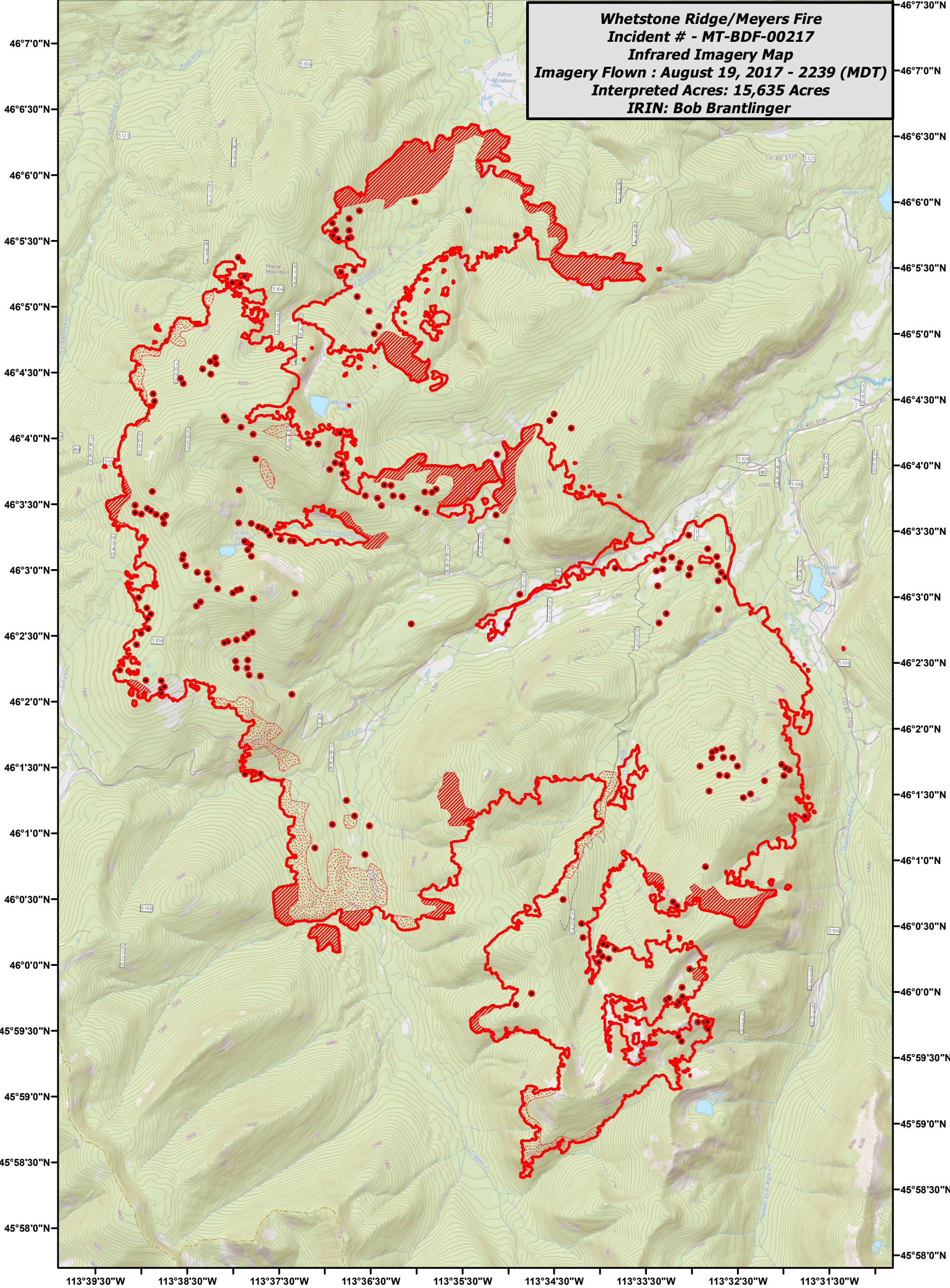


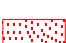



113°39'30"W 113°38'30"W 113°37'30"W 113°36'30"W 113°35'30"W 113°34'30"W 113°33'30"W 113°32'30"W 113°31'30"W

**Whetstone Ridge/Meyers Fire**  
**Incident # - MT-BDF-00217**  
**Infrared Imagery Map**  
**Imagery Flown : August 19, 2017 - 2239 (MDT)**  
**Interpreted Acres: 15,635 Acres**  
**IRIN: Bob Brantlinger**



**Legend**

-  Heat Perimeter
-  Intense Heat
-  Scattered Heat Source
-  Isolated Heat Source

