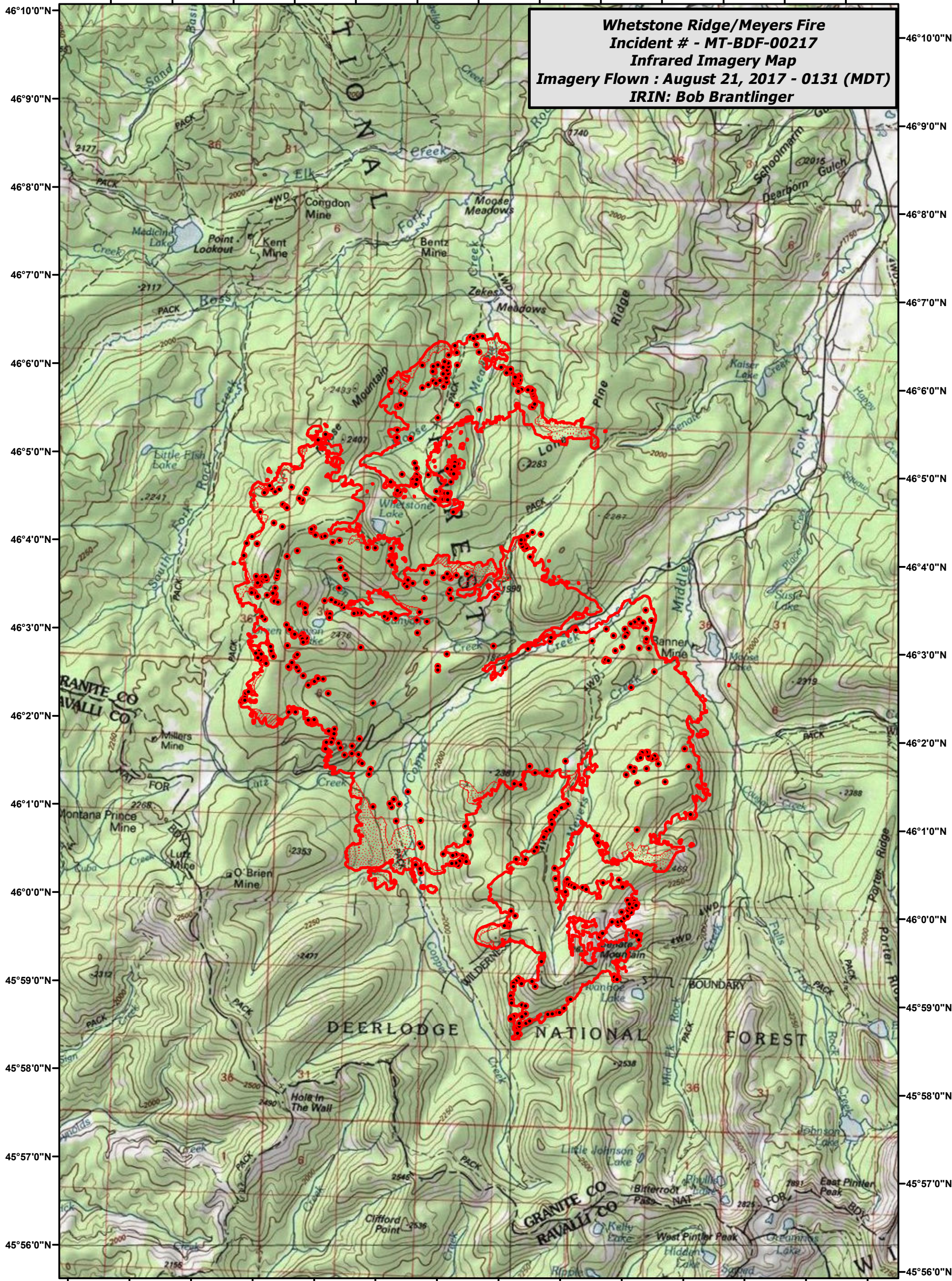






113°42'0"W 113°41'0"W 113°40'0"W 113°39'0"W 113°38'0"W 113°37'0"W 113°36'0"W 113°35'0"W 113°34'0"W 113°33'0"W 113°32'0"W 113°31'0"W 113°30'0"W



Whetstone Ridge/Meyers Fire
Incident # - MT-BDF-00217
Infrared Imagery Map
Imagery Flown : August 21, 2017 - 0131 (MDT)
IRIN: Bob Brantlinger

Legend

 Heat Perimeter	 Scattered Heat Source
 Intense Heat	 Isolated Heat Source

N

0 1 2 4 Miles

