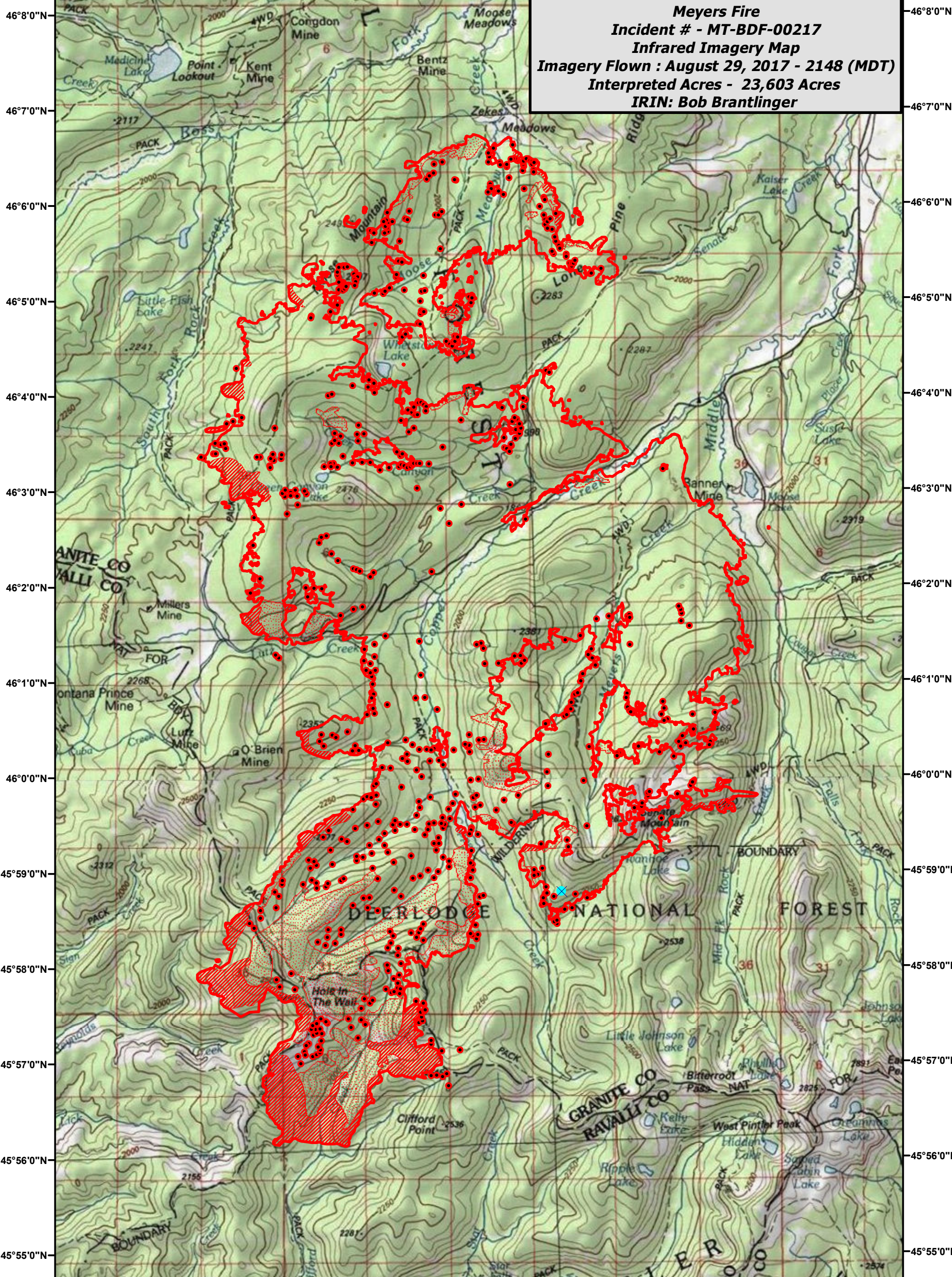


113°42'0"W 113°41'0"W 113°40'0"W 113°39'0"W 113°38'0"W 113°37'0"W 113°36'0"W 113°35'0"W 113°34'0"W 113°33'0"W 113°32'0"W 113°31'0"W 113°30'0"W





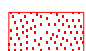

Meyers Fire
Incident # - MT-BDF-00217
Infrared Imagery Map
Imagery Flown : August 29, 2017 - 2148 (MDT)
Interpreted Acres - 23,603 Acres
IRIN: Bob Brantlinger

46°8'0"N
46°7'0"N
46°6'0"N
46°5'0"N
46°4'0"N
46°3'0"N
46°2'0"N
46°1'0"N
46°0'0"N
45°59'0"N
45°58'0"N
45°57'0"N
45°56'0"N
45°55'0"N

46°8'0"N
46°7'0"N
46°6'0"N
46°5'0"N
46°4'0"N
46°3'0"N
46°2'0"N
46°1'0"N
46°0'0"N
45°59'0"N
45°58'0"N
45°57'0"N
45°56'0"N
45°55'0"N

113°42'0"W 113°41'0"W 113°40'0"W 113°39'0"W 113°38'0"W 113°37'0"W 113°36'0"W 113°35'0"W 113°34'0"W 113°33'0"W 113°32'0"W 113°31'0"W 113°30'0"W

Legend

-  Heat Perimeter
-  Intense Heat
-  Scattered Heat Source
-  Isolated Heat Source

