

113°39'W

113°38'W

113°37'W

113°36'W

113°35'W

113°34'W

46°42'N  
46°41'N  
46°40'N  
46°39'N  
46°38'N  
46°37'N  
46°36'N

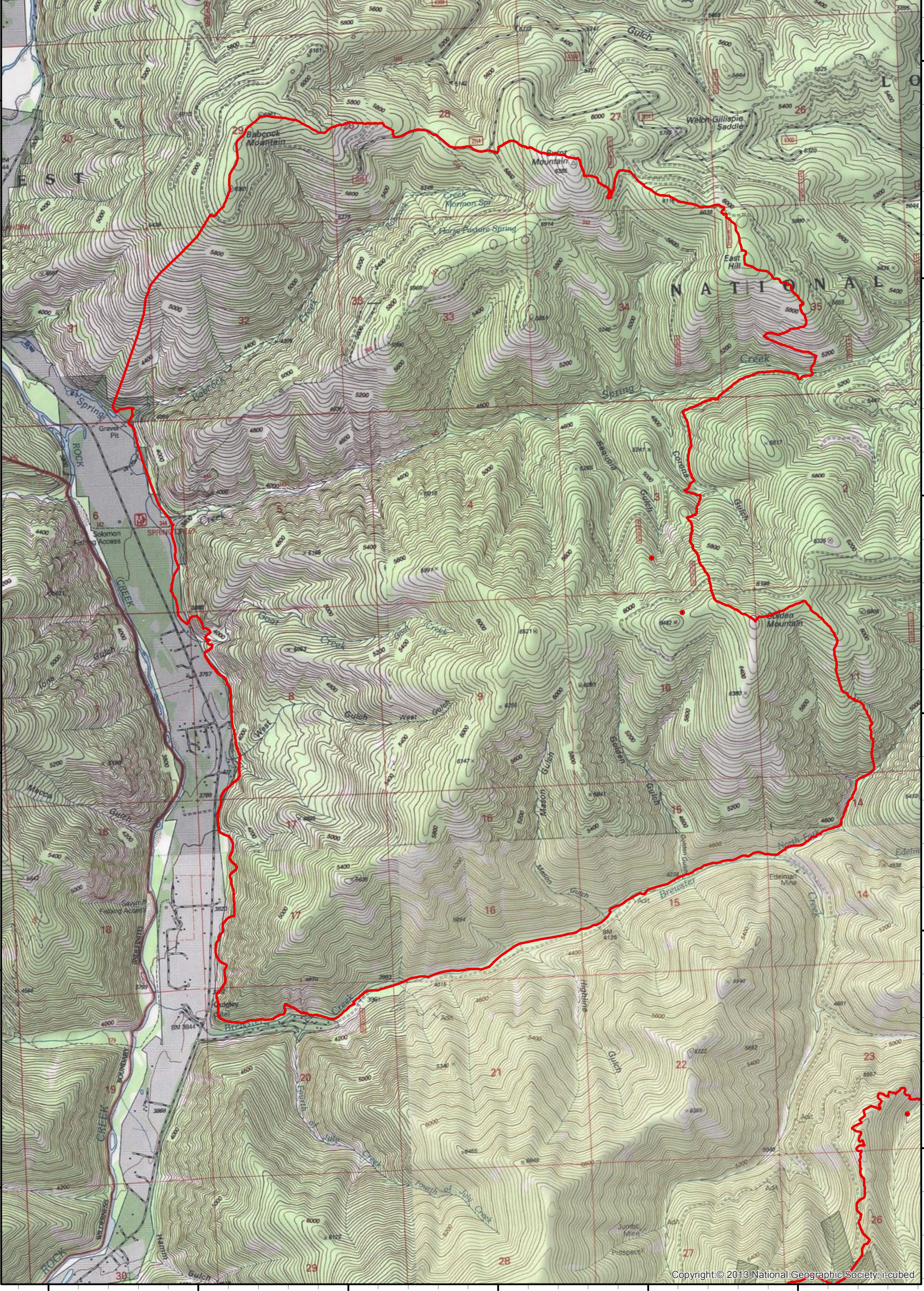
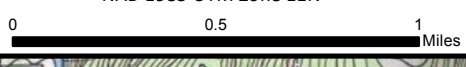
46°42'N  
46°41'N  
46°40'N  
46°39'N  
46°38'N  
46°37'N  
46°36'N

**Infrared Map**  
**Sapphire Complex (MT-LNF-001463)**  
**GOAT CREEK FIRE**  
Map Date: 09/12/2017  
29 Imagery Date: 09/12/2017  
Imagery Time: 0223 MDT  
IR Interpreted Acres: 8,300 acres  
IRIN: Tammy Hocut

- Isolated Heat Sources
- Heat Perimeter
- Intense Heat
- Scattered Heat



NAD 1983 UTM Zone 11N



113°40'W

113°39'W

113°38'W

113°37'W

113°36'W

113°35'W