

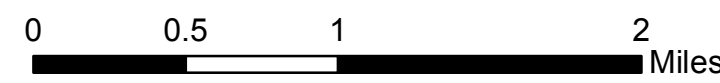
Whetstone Ridge - Meyers F

MT-BDF-002213

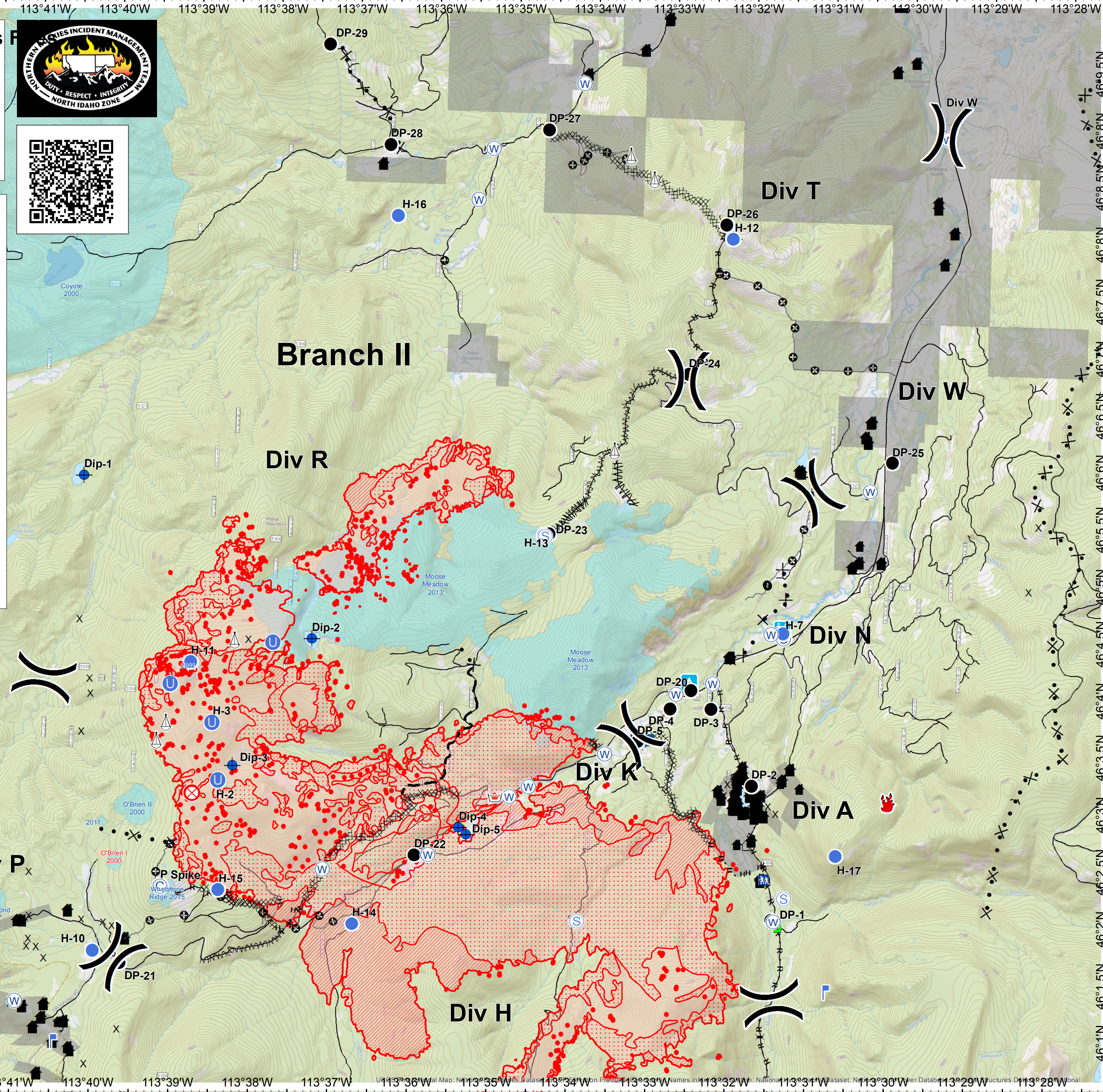
0600 BRIEFING Map

August 2, 2017

INTERPRETED ACRES as of 08/01/2017 2323 hrs
11,593



- | | |
|----------------------------------|-------------------------|
| Heat Perimeter | Camp |
| Intense Heat | Dip Site |
| Scattered Heat | Drop Point |
| Isolated Heat | Fire Location |
| Completed Dozer Line | Fire Origin |
| Completed Hand Line | Unimproved Landing Area |
| Road as Completed Line | Fire Origin |
| Line Break Completed | Unimproved Landing Area |
| Proposed Dozer Line | Helispot |
| Fire Break Planned or Incomplete | Landmark |
| Planned Fire Line | Lookout |
| Other | Mobile Weather Unit |
| FireHistory1980Present | Repeater |
| | Retardant/Mud Pit |
| | Sling Site |
| | Staging Area |
| | Water Source |
| | Division Break |



113°45'W 113°44'W 113°43'W 113°42'W 113°41'W 113°40'W 113°39'W 113°38'W 113°37'W 113°36'W 113°35'W 113°34'W 113°33'W 113°32'W 113°31'W 113°30'W 113°29'W 113°28'W

46°0.5'N 46°1'N 46°1.5'N 46°2'N 46°2.5'N 46°3'N 46°3.5'N 46°4'N 46°4.5'N 46°5'N 46°5.5'N 46°6'N 46°6.5'N 46°7'N 46°7.5'N 46°8'N 46°8.5'N 46°9'N