

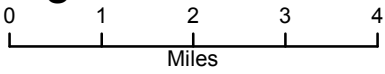
113°46'W 113°44'W 113°42'W 113°40'W 113°38'W 113°36'W 113°34'W 113°32'W 113°30'W 113°28'W 113°26'W 113°24'W 113°22'W

# Air Ops Map

## Whetstone Meyers Fire

### MT-BDF-002213

### August 2, 2017 0600

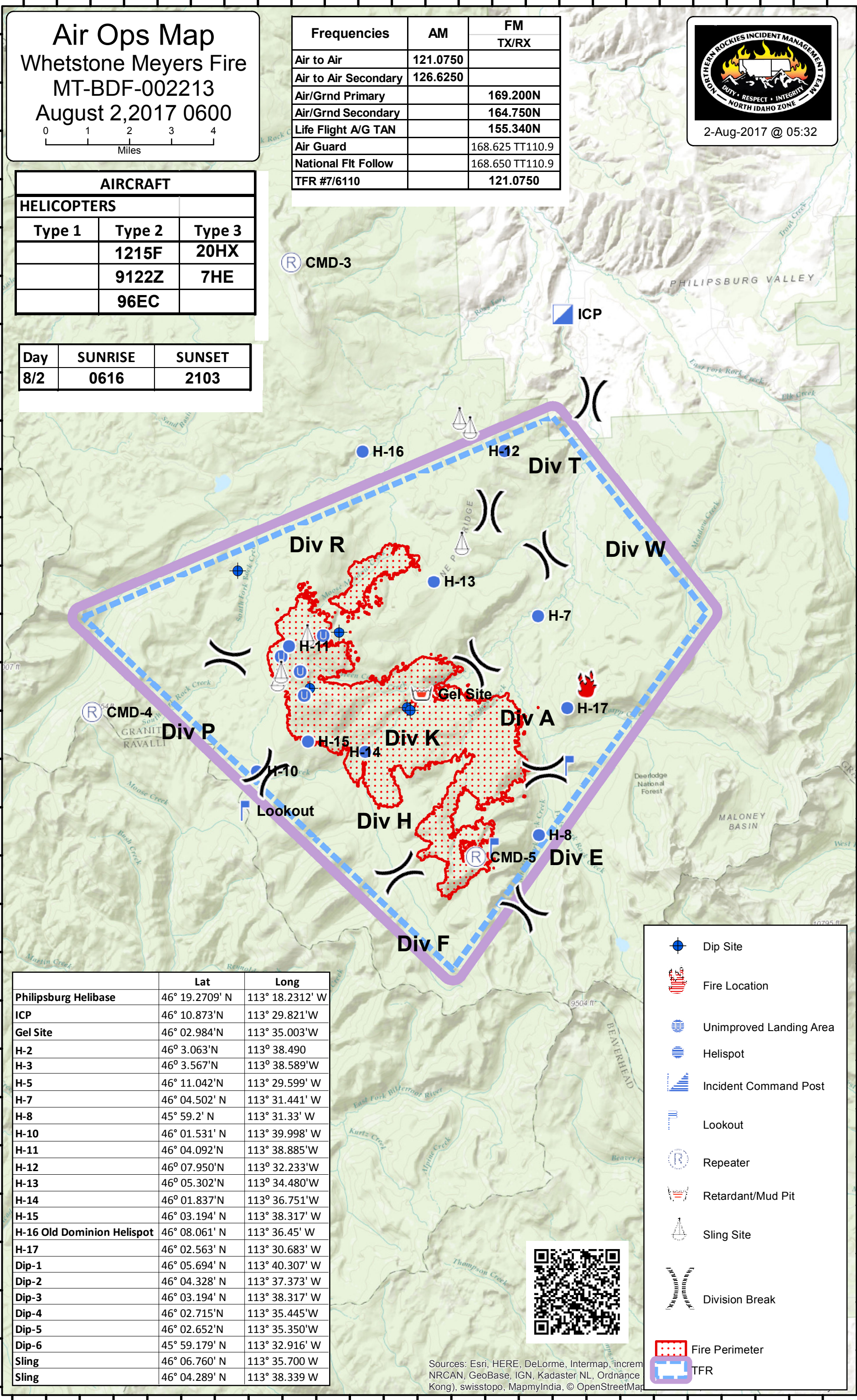


Frequencies	AM	FM TX/RX
Air to Air	121.0750	
Air to Air Secondary	126.6250	
Air/Grnd Primary		169.200N
Air/Grnd Secondary		164.750N
Life Flight A/G TAN		155.340N
Air Guard		168.625 TT110.9
National Flt Follow		168.650 TT110.9
TFR #7/6110		121.0750



AIRCRAFT		
HELICOPTERS		
Type 1	Type 2	Type 3
	1215F	20HX
	9122Z	7HE
	96EC	

Day	SUNRISE	SUNSET
8/2	0616	2103



	Lat	Long
Philipsburg Helibase	46° 19.2709' N	113° 18.2312' W
ICP	46° 10.873' N	113° 29.821' W
Gel Site	46° 02.984' N	113° 35.003' W
H-2	46° 3.063' N	113° 38.490
H-3	46° 3.567' N	113° 38.589' W
H-5	46° 11.042' N	113° 29.599' W
H-7	46° 04.502' N	113° 31.441' W
H-8	45° 59.2' N	113° 31.33' W
H-10	46° 01.531' N	113° 39.998' W
H-11	46° 04.092' N	113° 38.885' W
H-12	46° 07.950' N	113° 32.233' W
H-13	46° 05.302' N	113° 34.480' W
H-14	46° 01.837' N	113° 36.751' W
H-15	46° 03.194' N	113° 38.317' W
H-16 Old Dominion Helispot	46° 08.061' N	113° 36.45' W
H-17	46° 02.563' N	113° 30.683' W
Dip-1	46° 05.694' N	113° 40.307' W
Dip-2	46° 04.328' N	113° 37.373' W
Dip-3	46° 03.194' N	113° 38.317' W
Dip-4	46° 02.715' N	113° 35.445' W
Dip-5	46° 02.652' N	113° 35.350' W
Dip-6	45° 59.179' N	113° 32.916' W
Sling	46° 06.760' N	113° 35.700' W
Sling	46° 04.289' N	113° 38.339' W

- Dip Site
- Fire Location
- Unimproved Landing Area
- Helispot
- Incident Command Post
- Lookout
- Repeater
- Retardant/Mud Pit
- Sling Site
- Division Break
- Fire Perimeter
- TFR



Sources: Esri, HERE, DeLorme, Intermap, incrom NRCAN, GeoBase, IGN, Kadaster NL, Ordnance Kong), swisstopo, MapmyIndia, © OpenStreetMap

113°48'W 113°46'W 113°44'W 113°42'W 113°40'W 113°38'W 113°36'W 113°34'W 113°32'W 113°30'W 113°28'W 113°26'W 113°24'W