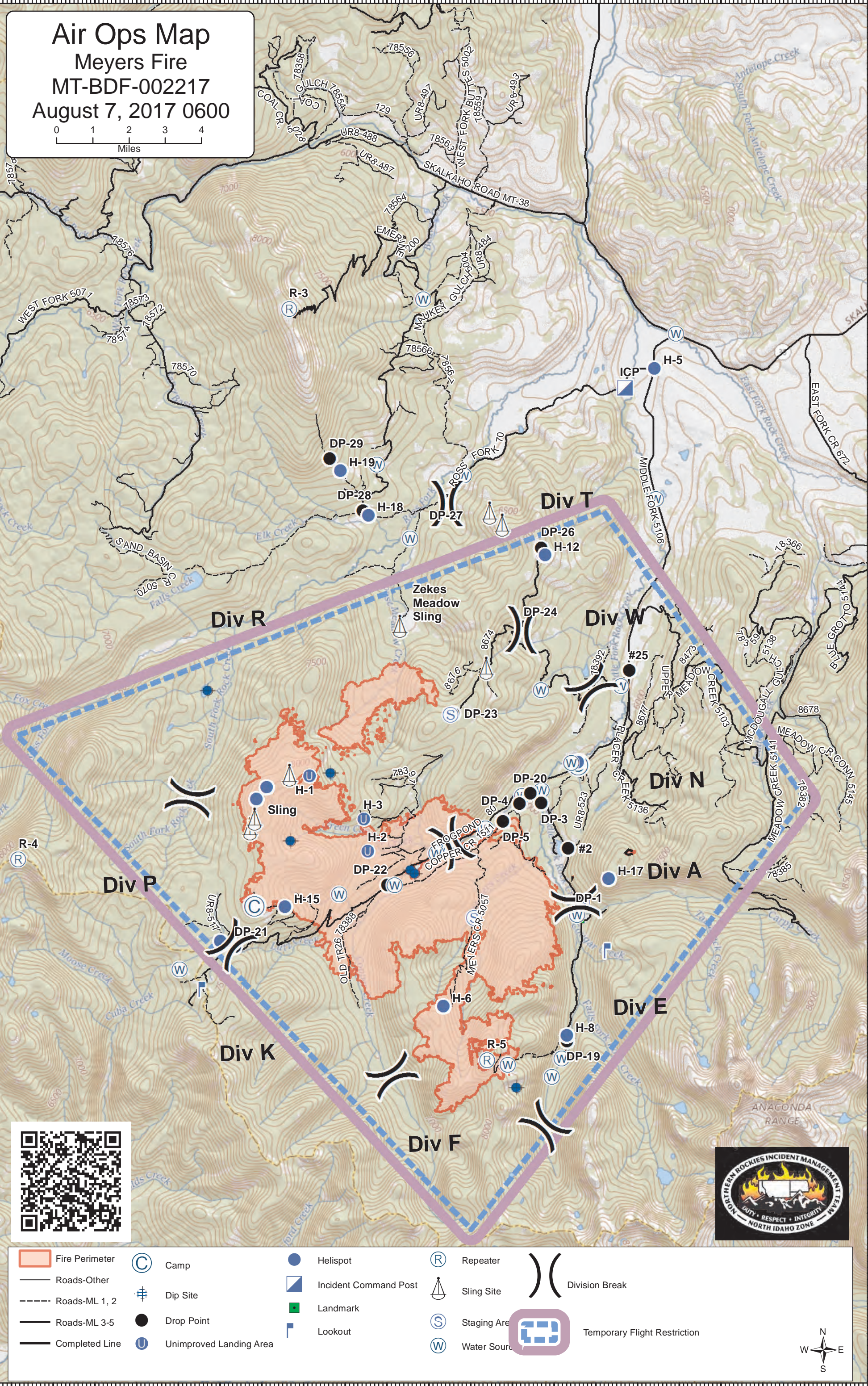
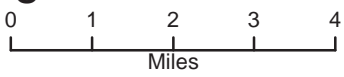


Air Ops Map

Meyers Fire

MT-BDF-002217

August 7, 2017 0600



Fire Perimeter	Camp	Helispot	Repeater	Division Break
Roads-Other	Dip Site	Incident Command Post	Sling Site	Temporary Flight Restriction
Roads-ML 1, 2	Drop Point	Landmark	Staging Area	North
Roads-ML 3-5	Unimproved Landing Area	Lookout	Water Source	
Completed Line				



FREQUENCIES	VHF-AM	VHF-FM
MEYERS A/G PRI (A-7 Whet)		169.200N
MEYERS A/G SEC (A-22 Whet)		164.750N
MEYERS A/A (A-6 Whet)	121.0750	
MEYERS A/A (A-8)		126.6250
TAKEOFF/LANDING (A-23)		172.6500
Deck		163.1000
National Flt Follow	168.6500 TX/RX 110.9	
Air Guard	168.625 TX 110.9	
Unicom (U05)		122.9000
Beaverhead Direct	171.425 RX/TX TT 131.8	
Deerlodge Direct	171.000 RX/TX TT 141.3	
B-D IA Air/Air	132.7	
B-D IA A/G #29 (pri)	166.9000 N	
B-D IA A/G #52 (sec)	168.3875 N	
B-D IA A/G #53 (alt)	168.4875 N	

Location Type	Name of Location (e.g., H12)	Designator	Latitude	Longitude	Altitude (PA)	HIGE/HOGE	Remarks/Hazards/ Directions To Site/Helipad/Hospital Freqs
Helibase	Philipsburg		N46 193.162	W113 18.303			Philipsburg Airport (U05)
Helispot	Whetstone	H-1	N46 04.282	W113 37.856	8152	HOGE	Compromised by fire
Helispot	Whetstone	H-2	N46 03.023	W113 36.462	7500	HOGE	Compromised by fire
Helispot	Whetstone	H-3	N46 03.560	W113 36.562	8000	HOGE	Type 2; Needs Dust Abatement & Approval
Helispot		H-4	N46 03.903	W113 39.138	8296	HOGE	Needs Improvement (Level & Remove Rocks)
Helispot	ICP/Cargo	H-5	N46 11.042	W113 29.599	5500	HIGE	Type 1; Cargo site across from ICP
Helispot	Meyers	H-6	N46 00.452	W113 34.653	7569	HOGE	Compromised by fire; Type 3
Helispot	Moose Cabin/ Gel Site	H-7	N46 04.502	W113 31.441	6000	HIGE	Gel Site, Type 2
Helispot		H-8	N45 59.963	W113 31.708	6200	HOGE	DIV E, near DP-19
Helispot	Lutz	H-10	N46 01.531	W113 39.998	7200	HIGE	Type 2&3; Excellent for multiple Rotor-wing
Helispot		H-12	N46 07.950	W113 32.233	7000	HOGE	DIV T, End of Dozer Line
Helispot		H-13	N46 05.302	W113 34.480	7300	HOGE	DIV T, Old Moose Meadows fire scar, dust abatement
Helispot	Sage Brush	H-14	N46 01.837	W113 36.751	6035	HOGE	Needs some improvement
Helispot		H-15	N46 02.100	W113 38.445	7400	HOGE	DIV K; Hose and Pumpkin in the way
Helispot	Old Dominion	H-17	N46 02.563	W113 30.683	7450	HOGE	Old Dominion Fire
Helispot		H-18	N46 08.61	W113 36.45	6500	HOGE	DIV R; near DP-28
Helispot		H-19	N46 9.348	W113 37.123	6560	HOGE	DIV R; Type 2 or 3 - Possibly need dust abatement
Helispot	Cmd 3 Emerine	R-3	N46 11.150	W113 38.020	8529	HOGE	Emerine Mountain Cmd 3 Repeater Site
Helispot	Cmd 4 Bare Hill	R-4	N46 02.895	W113 44.820		HOGE	Type 3; CMD 4 Repeater Site
Helispot	O'Brian Ridge		N46 0.040	W113 39.883	7841	HOGE	Type 3
Helispot	Cmd 5 Senate Mt	R-5	N45 59.56	W113 33.6	8600	HOGE	Senate Mountain, Cmd 5 Repeater Site
Helispot	Cmd 6 Tiny Mt	R-6	N46 03.55	W113 16.45	9757	HOGE	Tiny Mountain
H2O Dip	Beaver Pond	Dip 2	N46 02.652	W113 35.350		HOGE	
H2O Dip	Copper Creek	Dip 3	N46 02.715	W113 35.445	7300	HOGE	
H2O Dip	Green Lake	Dip 4	N46 03.194	W113 38.317		HOGE	Whetstone
H2O Dip	Ivanhoe Lake	Dip 5	N46 59.179	W113 32.916	8000	HOGE	Meyers; wilderness; track buckets used
H2O Dip	Lily Lake	Dip 6	N46 05.694	W113 40.307	7600	HOGE	
H2O Dip	Whetstone Lake	Dip 7	N46 04.328	W113 37.373	7400	HOGE	Whetstone
Sling Site	Zekes Meadow Sling		N46 06.760	W113 35.700		HOGE	Whetstone DIV Cabin
Sling Site	Middle Sling		N46 04.289	W113 38.339		HOGE	
	2011 Whetstone Burn Scar		N46 04.092	W113 38.885		HOGE	