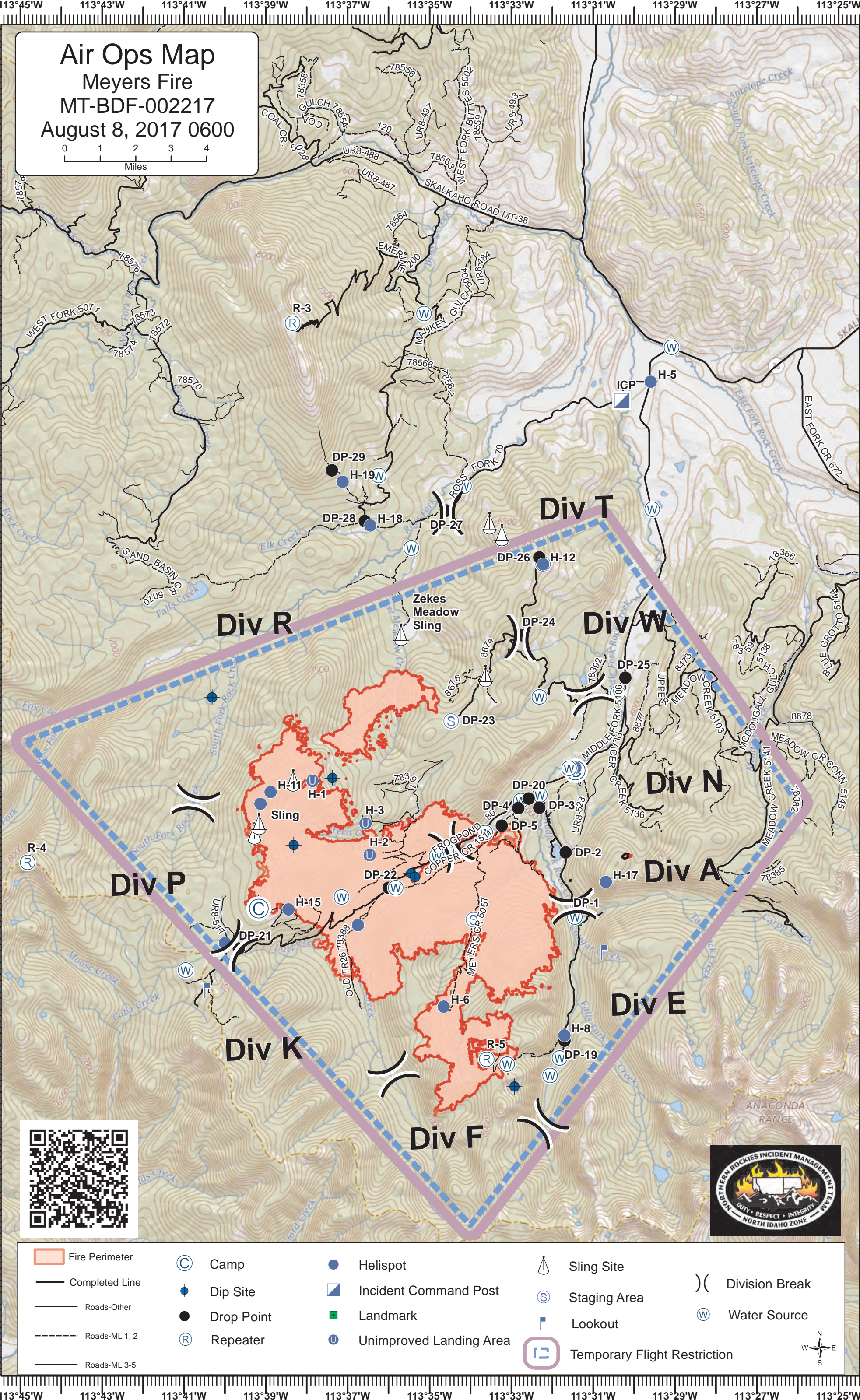
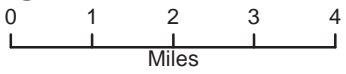


Air Ops Map

Meyers Fire

MT-BDF-002217

August 8, 2017 0600



Fire Perimeter	Camp	Helispot	Sling Site
Completed Line	Dip Site	Incident Command Post	Staging Area
Roads-Other	Drop Point	Landmark	Division Break
Roads-ML 1, 2	Repeater	Unimproved Landing Area	Water Source
Roads-ML 3-5		Lookout	Temporary Flight Restriction



FREQUENCIES	VHF-AM	VHF-FM
MEYERS A/G PRI (A-7 Whet)		169.200N
MEYERS A/G SEC (A-22 Whet)		164.750N
MEYERS A/A (A-6 Whet)	121.0750	
MEYERS A/A (A-8)		126.6250
TAKEOFF/LANDING (A-23)		172.6500
Deck		163.1000
National Flt Follow	168.6500 TX/RX 110.9	
Air Guard	168.625 TX 110.9	
Unicom (U05)		122.9000
Beaverhead Direct	171.425 RX/TX TT 131.8	
Deerlodge Direct	171.000 RX/TX TT 141.3	
B-D IA Air/Air	132.7	
B-D IA A/G #29 (pri)	166.9000 N	
B-D IA A/G #52 (sec)	168.3875 N	
B-D IA A/G #53 (alt)	168.4875 N	

Location Type	Name of Location	Designator	Latitude	Longitude	Altitude (PA)	HIGE/HOGE	Remarks/Hazards/Directions To Site/Helipad/Hospital Freqs
Helibase	Philipsburg		N46 193.162	W113 18.303			Philipsburg Airport (U05)
Helibase	ICP/Cargo	H-5	N46 11.042	W113 29.599	5500	HIGE	Type 1; Cargo site across from ICP
Helispot	Meyers	H-6	N46 00.452	W113 34.653	7569	HOGE	Compromised by fire; Type 3
Helispot	Moose Cabin/ Gel Site	H-7	N46 04.502	W113 31.441	6000	HIGE	Gel Site, Type 2
Helispot		H-8	N45 59.963	W113 31.708	6200	HOGE	DIV E, near DP-19
Helispot	Lutz	H-10	N46 01.531	W113 39.998	7200	HIGE	Type 2&3; Excellent for multiple Rotor-wing
Helispot		H-12	N46 07.950	W113 32.233	7000	HOGE	DIV T, End of Dozer Line
Helispot		H-13	N46 05.302	W113 34.480	7300	HOGE	DIV T, Old Moose Meadows fire scar, dust abate
Helispot	Sage Brush	H-14	N46 01.837	W113 36.751	6035	HOGE	Needs some improvement
Helispot		H-15	N46 02.100	W113 38.445	7400	HOGE	DIV K; Hose and Pumpkin in the way
Helispot	Old Dominion	H-17	N46 02.563	W113 30.683	7450	HOGE	Old Dominion Fire
Helispot		H-18	N46 08.61	W113 36.45	6500	HOGE	DIV R; near DP-28
Helispot		H-19	N46 9.348	W113 37.123	6560	HOGE	DIV R; Type 2 or 3 - Possibly need dust abatement
Helispot	Cmd 3 Emerine	R3	N46 11.150	W113 38.020	8529	HOGE	Emerine Mountain Cmd 3 Repeater Site
Helispot	Cmd 4 Bare Hill	R4	N46 02.895	W113 44.820		HOGE	Type 3; CMD 4 Repeater Site
Helispot	O'Brian Ridge		N46 0.040	W113 39.883	7841	HOGE	Type 3
Helispot	Cmd 5 Senate Mt	R5	N45 59.56	W113 33.6	8600	HOGE	Senate Mountain, Cmd 5 Repeater Site
Helispot	Cmd 6 Tiny Mt	R6	N46 03.55	W113 16.45	9757	HOGE	Tiny Mountain, Cmd Repeater Site
H2O Dip	Beaver Pond	Dip 2	N46 02.652	W113 35.350		HOGE	
H2O Dip	Copper Creek	Dip 3	N46 02.715	W113 35.445	7300	HOGE	
H2O Dip	Green Lake	Dip 4	N46 03.194	W113 38.317		HOGE	Whetstone
H2O Dip	Ivanhoe Lake	Dip 5	N46 59.179	W113 32.916	8000	HOGE	Meyers; wilderness; track buckets used
H2O Dip	Lily Lake	Dip 6	N46 05.694	W113 40.307	7600	HOGE	
H2O Dip	Whetstone Lake	Dip 7	N46 04.328	W113 37. 373	7400	HOGE	Whetstone
Sling Site	Zekes Meadow Sling		N46 06.760	W113 35.700		HOGE	Whetstone DIV Cabin
Sling Site	Middle Sling		N46 04.289	W113 38.339		HOGE	