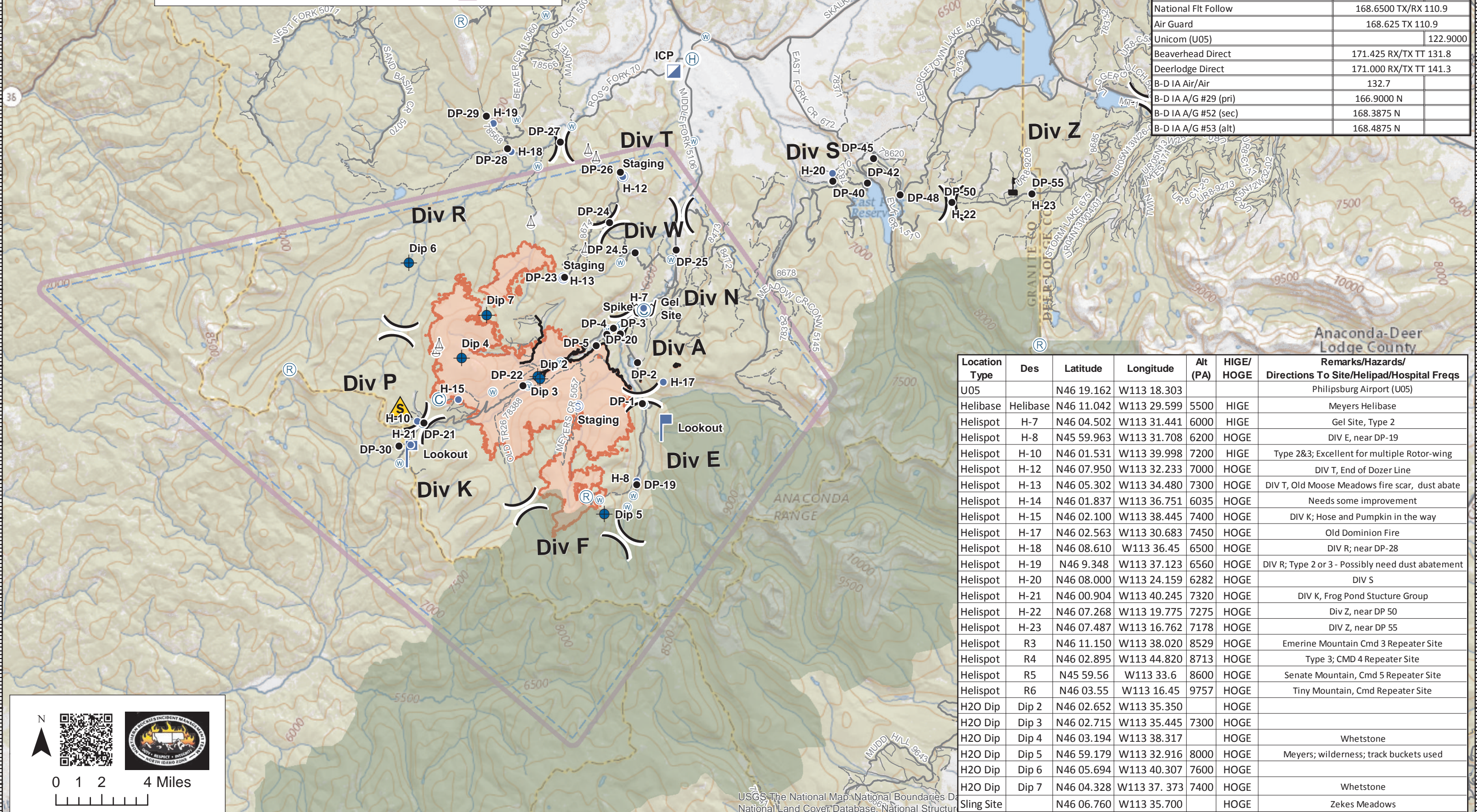


Air Ops Map
Meyers Fire
MT-BDF-002217
August 13, 2017

- Completed Line
- Designated Wilderness
- ⊙ Camp
- ⬮ Dip Site
- Drop Point
- ⊕ Helibase
- Helispot
- ⊕ ICP
- ⊕ Lookout
- ⊕ Repeater
- ⊕ Retardant/Mud Pit
- ⚠ Safety Zone
- ⊕ Sling Site
- ⊕ Staging Area
- ⊕ Water Source
- ⊕ Value at Risk
- ⊕ Division Break
- ⊕ TFR

FREQUENCIES	VHF-AM	VHF-FM
MEYERS A/G PRI (A-7 Whet)		169.200N
MEYERS A/G SEC (A-22 Whet)		164.750N
MEYERS A/A (A-6 Whet)	121.0750	
MEYERS A/A (A-8)		126.6250
TAKEOFF/LANDING (A-23)		172.6500
Deck		163.1000
National Ft Follow	168.6500 TX/RX 110.9	
Air Guard	168.625 TX 110.9	
Unicom (U05)		122.9000
Beaverhead Direct	171.425 RX/TX TT 131.8	
Deerlodge Direct	171.000 RX/TX TT 141.3	
B-D IA Air/Air	132.7	
B-D IA A/G #29 (pri)	166.9000 N	
B-D IA A/G #52 (sec)	168.3875 N	
B-D IA A/G #53 (alt)	168.4875 N	



Location Type	Des	Latitude	Longitude	Alt (PA)	HIGE/HOGE	Remarks/Hazards/Directions To Site/Helipad/Hospital Freqs
U05		N46 19.162	W113 18.303			Philipsburg Airport (U05)
Helibase	Helibase	N46 11.042	W113 29.599	5500	HIGE	Meyers Helibase
Helispot	H-7	N46 04.502	W113 31.441	6000	HIGE	Gel Site, Type 2
Helispot	H-8	N45 59.963	W113 31.708	6200	HOGE	DIV E, near DP-19
Helispot	H-10	N46 01.531	W113 39.998	7200	HIGE	Type 2&3; Excellent for multiple Rotor-wing
Helispot	H-12	N46 07.950	W113 32.233	7000	HOGE	DIV T, End of Dozer Line
Helispot	H-13	N46 05.302	W113 34.480	7300	HOGE	DIV T, Old Moose Meadows fire scar, dust abate
Helispot	H-14	N46 01.837	W113 36.751	6035	HOGE	Needs some improvement
Helispot	H-15	N46 02.100	W113 38.445	7400	HOGE	DIV K; Hose and Pumpkin in the way
Helispot	H-17	N46 02.563	W113 30.683	7450	HOGE	Old Dominion Fire
Helispot	H-18	N46 08.610	W113 36.45	6500	HOGE	DIV R; near DP-28
Helispot	H-19	N46 9.348	W113 37.123	6560	HOGE	DIV R; Type 2 or 3 - Possibly need dust abatement
Helispot	H-20	N46 08.000	W113 24.159	6282	HOGE	DIV S
Helispot	H-21	N46 00.904	W113 40.245	7320	HOGE	DIV K, Frog Pond Structure Group
Helispot	H-22	N46 07.268	W113 19.775	7275	HOGE	Div Z, near DP 50
Helispot	H-23	N46 07.487	W113 16.762	7178	HOGE	Div Z, near DP 55
Helispot	R3	N46 11.150	W113 38.020	8529	HOGE	Emerine Mountain Cmd 3 Repeater Site
Helispot	R4	N46 02.895	W113 44.820	8713	HOGE	Type 3; CMD 4 Repeater Site
Helispot	R5	N45 59.56	W113 33.6	8600	HOGE	Senate Mountain, Cmd 5 Repeater Site
Helispot	R6	N46 03.55	W113 16.45	9757	HOGE	Tiny Mountain, Cmd Repeater Site
H2O Dip	Dip 2	N46 02.652	W113 35.350		HOGE	
H2O Dip	Dip 3	N46 02.715	W113 35.445	7300	HOGE	
H2O Dip	Dip 4	N46 03.194	W113 38.317		HOGE	Whetstone
H2O Dip	Dip 5	N46 59.179	W113 32.916	8000	HOGE	Meyers; wilderness; track buckets used
H2O Dip	Dip 6	N46 05.694	W113 40.307	7600	HOGE	
H2O Dip	Dip 7	N46 04.328	W113 37.373	7400	HOGE	Whetstone
Sling Site		N46 06.760	W113 35.700		HOGE	Zekes Meadows

0 1 2 4 Miles