

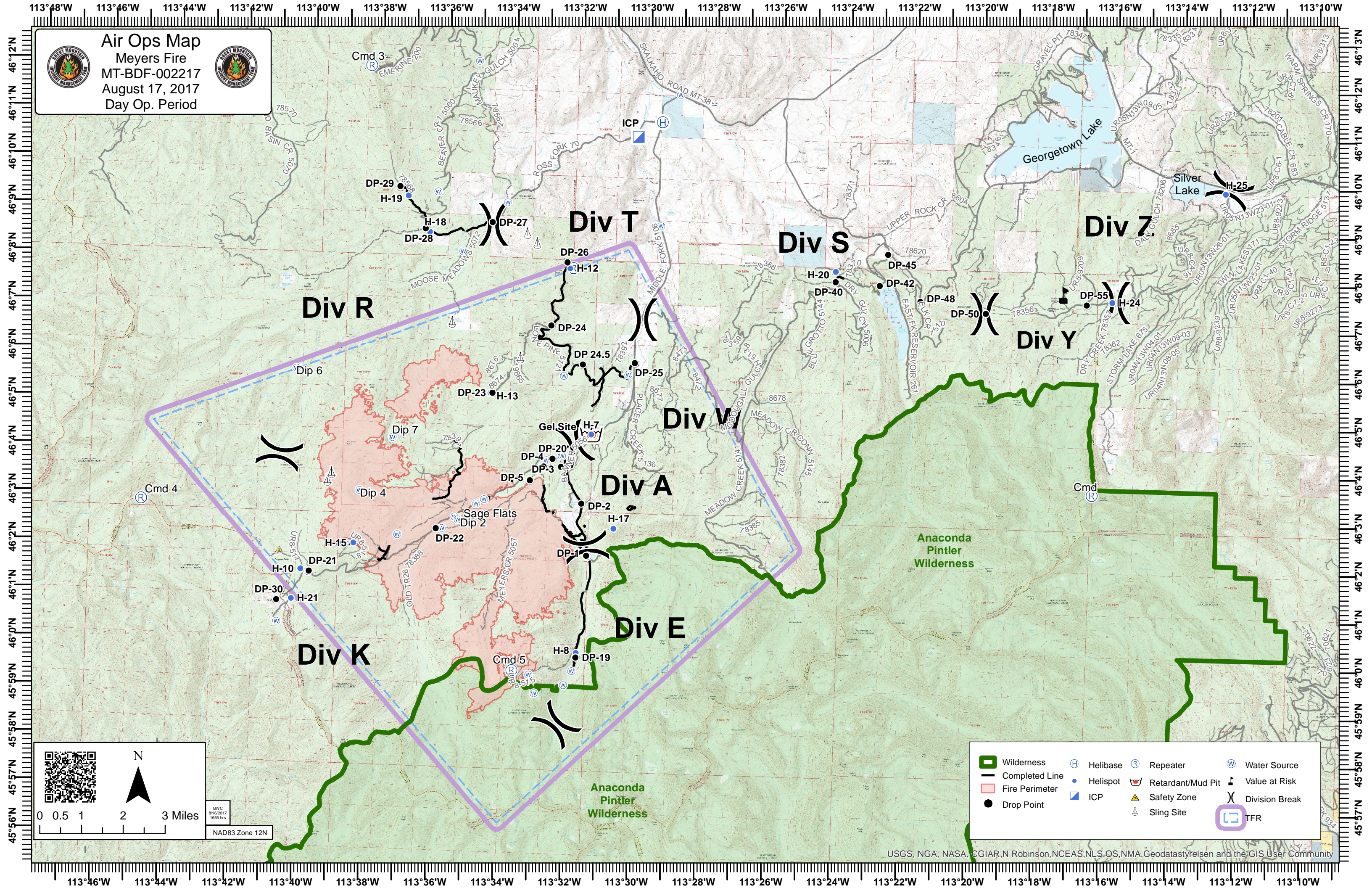




Air Ops Map
 Meyers Fire
 MT-BDF-002217
 August 17, 2017
 Day Op. Period

N



0 0.5 1 2 3 Miles

GWC
 8/16/2017
 1655 hrs
 NAD83 Zone 12N

Wilderness	Helibase	Repeater	Water Source
Completed Line	Helispot	Retardant/Mud Pit	Value at Risk
Fire Perimeter	ICP	Safety Zone	Division Break
Drop Point	Sling Site	TFR	

Location Type	Designator	Latitude	Longitude	Altitude (PA)	HIGE/HOGE	Remarks/Hazards/ Directions To Site/Helipad/Hospital/Fregs
U05	Pburg	N46 19.162	W113 18.303	5197		Phillipsburg Airport (U05)
Helibase	Helibase	N46 11.042	W113 29.599	5500	HIGE	Meyers Helibase
Safety Zone	SafetyZone	N46 01.915	W113 40.644			Frog Pond Area
Helispot	H-7	N46 04.502	W113 31.441	6000	HIGE	Gel Site, Type 2
Helispot	H-8	N45 59.963	W113 31.708	6200	HOGF	DIV E, near DP-19
Helispot	H-10	N46 01.531	W113 39.998	7200	HIGE	Type 2&3; Excellent for multiple Rotor-wing
Helispot	H-12	N46 07.950	W113 32.233	7000	HOGF	DIV T, End of Dozer Line
Helispot	H-13	N46 05.302	W113 34.480	7300	HOGF	DIV T, Old Moose Meadows fire scar, dust abate
Helispot	H-14	N46 01.837	W113 36.751	6035	HOGF	Needs some improvement
Helispot	H-15	N46 02.100	W113 38.445	7400	HOGF	DIV K, Hose and Pumpkin in the way
Helispot	H-17	N46 02.563	W113 30.683	7450	HOGF	Old Dominion Fire
Helispot	H-18	N46 08.610	W113 36.45	6500	HOGF	DIV R, near DP-28
Helispot	H-19	N46 9.348	W113 37.123	6560	HOGF	DIV R: Type 2 or 3 - Possibly need dust abatement
Helispot	H-20	N46 08.044	W113 24.291	6282	HOGF	DIV S
Helispot	H-21	N46 00.904	W113 40.245	7320	HOGF	DIV K, Frog Pond Structure Group
Helispot	H-24	N46 07.565	W113 15.995	7117	HOGF	DIV Z, near DP 55
Helispot	R3	N46 12.066	W113 38.544	8529	HOGF	Emerine Mountain Cmd 3 Repeater Site
Helispot	R4	N46 02.895	W113 44.820	8713	HOGF	Type 3; CMD 4 Repeater Site
Helispot	R5	N45 59.56	W113 33.6	8600	HOGF	Senate Mountain, Cmd 5 Repeater Site
Helispot	R6	N46 03.55	W113 16.45	9757	HOGF	Tiny Mountain, Cmd Repeater Site
Retardant	Gel Site	N46 4.502'	W113 31.439'			Retardant/Mud Pit
DipSite	Dip 2	N46 02.652	W113 35.350	6098	HOGF	
DipSite	Dip 3	N46 02.715	W113 35.445	7300	HOGF	
DipSite	Dip 4	N46 03.194	W113 38.317	7440	HOGF	Wheystone
DipSite	Dip 5	N46 59.179	W113 32.916	8000	HOGF	Meyers; wilderness; track buckets used
DipSite	Dip 6	N46 05.694	W113 40.307	7600	HOGF	
DipSite	Dip 7	N46 04.328	W113 37. 373	7400	HOGF	Wheystone
Sling Site	Sling 1	N46 06.760	W113 35.700	6060	HOGF	Zekes Meadows
Drop Point	DP-01	N46 1.988'	W113 31.483'			Possible drop point. Being used by prior team. Unknown if previously mapped.
Drop Point	DP-02	N46 3.068'	W113 31.671'			Good parking area for lowboys and crews. Trail head
Drop Point	DP-03	N46 3.820'	W113 32.315'			
Drop Point	DP-04	N46 3.813'	W113 32.829'			
Drop Point	DP-19	N45 59.870'	W113 31.702'			
Drop Point	DP-20	N46 3.980'	W113 32.577'			
Drop Point	DP-21	N46 1.435'	W113 39.657'			Copper Creek Campground
Drop Point	DP-22	N46 2.461'	W113 35.996'			
Drop Point	DP-23	N46 5.313'	W113 34.426'			
Drop Point	DP-24	N46 6.751'	W113 32.732'			
Drop Point	DP-24.5	N46 5.960'	W113 31.759'			
Drop Point	DP-25	N46 6.023'	W113 30.211'			
Drop Point	DP-26	N46 8.070'	W113 32.314'			
Drop Point	DP-27	N46 8.853'	W113 34.583'			
Drop Point	DP-28	N46 8.681'	W113 36.579'			
Drop Point	DP-29	N46 9.543'	W113 37.380'			
Drop Point	DP-40	N46 7.834'	W113 24.285'			Proposed drop point
Drop Point	DP-42	N46 7.780'	W113 22.969'			Proposed drop point
Drop Point	DP-45	N46 8.426'	W113 22.747'			DP-48
Drop Point	DP-48	N46 7.478'	W113 21.740'			End of 883 Rd.
Drop Point	DP-50	N46 7.262'	W113 19.769'			DP #30
Drop Point	DP-55	N46 7.499'	W113 16.759'			Drop point 55. Approx MP 5.5