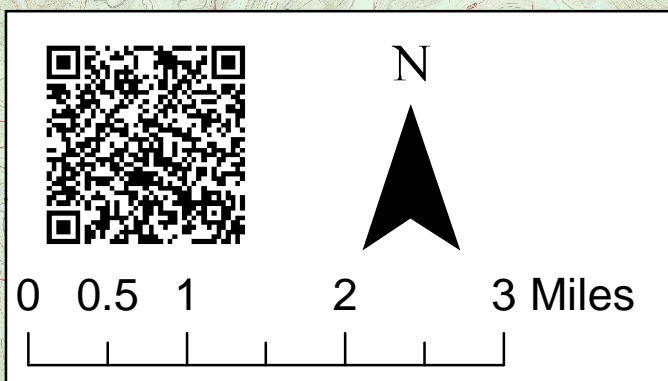
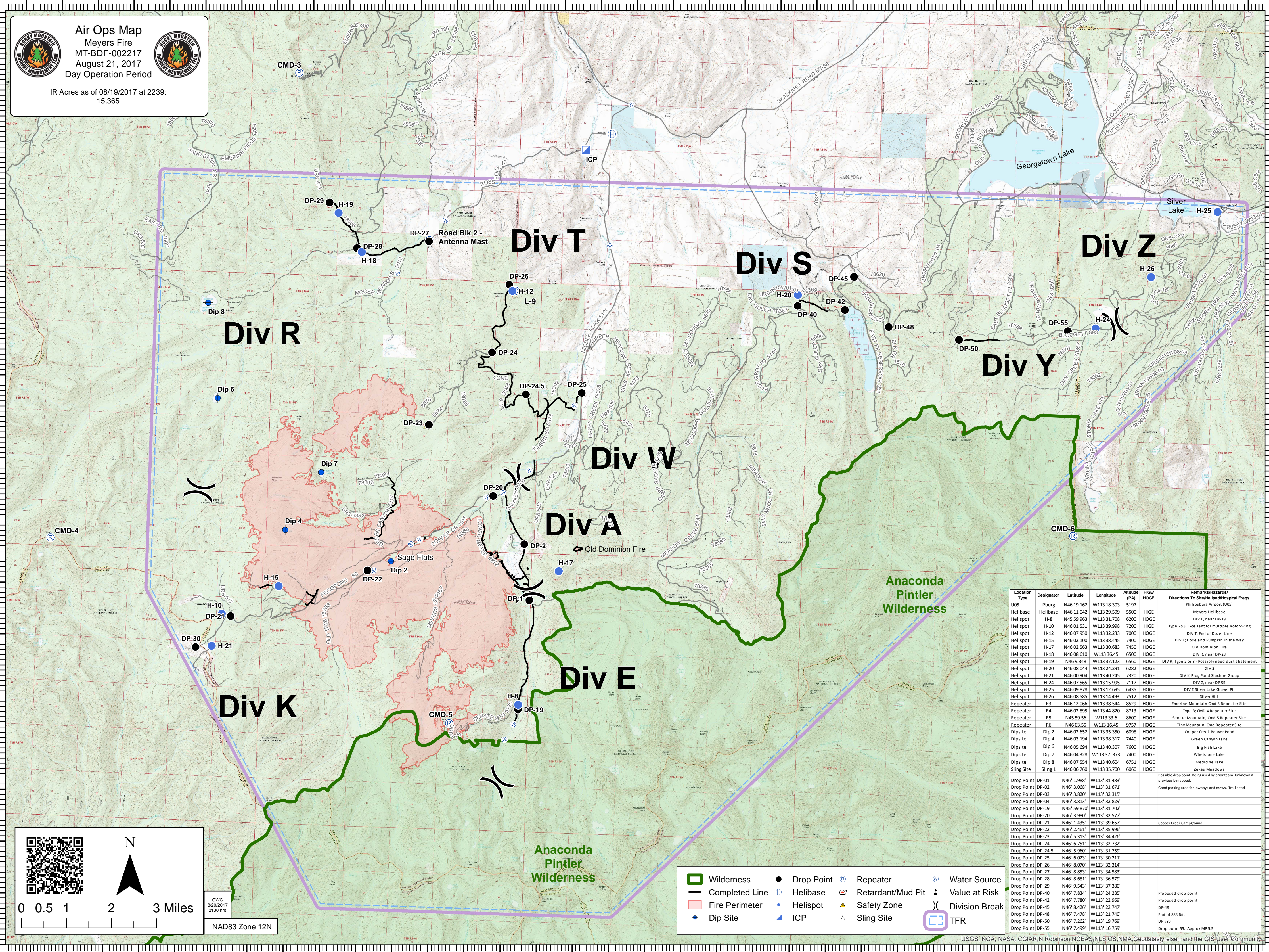




Air Ops Map
 Meyers Fire
 MT-BDF-002217
 August 21, 2017
 Day Operation Period



IR Acres as of 08/19/2017 at 2239:
 15,365



GWC
 8/20/2017
 2130 hrs
 NAD83 Zone 12N

- ▭ Wilderness
- ▭ Fire Perimeter
- + Dip Site
- Completed Line
- Ⓜ Helibase
- Ⓜ Helispot
- Ⓜ ICP
- Ⓜ Retardant/Mud Pit
- Ⓜ Safety Zone
- Ⓜ Sling Site
- Ⓜ Repeater
- Ⓜ Retardant/Mud Pit
- Ⓜ Sling Site
- Ⓜ Water Source
- Ⓜ Value at Risk
- Ⓜ Division Break
- Ⓜ TFR

Location Type	Designator	Latitude	Longitude	Altitude (PA)	HIGE/HOGE	Remarks/Hazards/Directions To Site/Helipad/Hospital Freqs
U05	Pburg	N46 19.162	W113 18.303	5197		Phillipsburg Airport (U05)
Helibase	Helibase	N46 11.042	W113 29.599	5500	HIGE	Meyers Helibase
Helispot	H-8	N45 59.963	W113 31.708	6200	HIGE	DIV E, near DP-19
Helispot	H-10	N46 01.531	W113 39.998	7200	HIGE	Type 283; Excellent for multiple Rotor-wing
Helispot	H-12	N46 07.950	W113 32.233	7000	HIGE	DIV T, End of Dozer Line
Helispot	H-15	N46 02.100	W113 38.445	7400	HIGE	DIV K; Hose and Pumpkin in the way
Helispot	H-17	N46 02.563	W113 30.683	7450	HIGE	Old Dominion Fire
Helispot	H-18	N46 08.610	W113 36.45	6500	HIGE	DIV R; near DP-28
Helispot	H-19	N46 9.348	W113 37.123	6560	HIGE	DIV R; Type 2 or 3 - Possibly need dust abatement
Helispot	H-20	N46 08.044	W113 24.291	6282	HIGE	DIV 5
Helispot	H-21	N46 00.904	W113 40.245	7320	HIGE	DIV K, Frog Pond Structure Group
Helispot	H-24	N46 07.565	W113 15.995	7117	HIGE	DIV Z, near DP 55
Helispot	H-25	N46 09.878	W113 12.695	6435	HIGE	DIV Z Silver Lake Gravel Pit
Helispot	H-26	N46 08.585	W113 14.493	7512	HIGE	Silver Hill
Repeater	R3	N46 12.066	W113 38.544	8329	HIGE	Emerine Mountain Cnd 3 Repeater Site
Repeater	R4	N46 02.895	W113 44.820	8713	HIGE	Type 3, Cnd 4 Repeater Site
Repeater	R5	N45 59.56	W113 33.6	8600	HIGE	Senate Mountain, Cnd 5 Repeater Site
Repeater	R6	N46 03.55	W113 16.45	9757	HIGE	Tiny Mountain, Cnd 5 Repeater Site
Dip Site	Dip 2	N46 02.652	W113 35.350	6098	HIGE	Copper Creek Beaver Pond
Dip Site	Dip 4	N46 03.194	W113 38.317	7440	HIGE	Green Canyon Lake
Dip Site	Dip 6	N46 05.694	W113 40.307	7600	HIGE	Big Fish Lake
Dip Site	Dip 7	N46 04.328	W113 37.373	7400	HIGE	Whetstone Lake
Dip Site	Dip 8	N46 07.554	W113 40.604	6751	HIGE	Medicine Lake
Sling Site	Sling 1	N46 06.760	W113 35.700	6060	HIGE	Zekes Meadows
Drop Point	DP-01	N46° 1.988'	W113° 31.483'			Possible drop point; being used by prior team. Unknown if previously mapped.
Drop Point	DP-02	N46° 3.068'	W113° 31.671'			
Drop Point	DP-03	N46° 3.820'	W113° 32.315'			Good parking area for lowboys and crews. Trail head
Drop Point	DP-04	N46° 3.813'	W113° 32.829'			
Drop Point	DP-19	N45° 59.870'	W113° 31.702'			
Drop Point	DP-20	N46° 3.980'	W113° 32.577'			
Drop Point	DP-21	N46° 1.435'	W113° 39.657'			Copper Creek Campground
Drop Point	DP-22	N46° 2.461'	W113° 35.996'			
Drop Point	DP-23	N46° 5.313'	W113° 34.426'			
Drop Point	DP-24	N46° 6.751'	W113° 32.732'			
Drop Point	DP-24.5	N46° 5.960'	W113° 31.759'			
Drop Point	DP-25	N46° 6.023'	W113° 30.211'			
Drop Point	DP-26	N46° 8.070'	W113° 32.314'			
Drop Point	DP-27	N46° 8.853'	W113° 34.583'			
Drop Point	DP-28	N46° 8.681'	W113° 36.579'			
Drop Point	DP-29	N46° 9.543'	W113° 37.380'			
Drop Point	DP-40	N46° 7.834'	W113° 24.285'			Proposed drop point
Drop Point	DP-42	N46° 7.787'	W113° 22.969'			Proposed drop point
Drop Point	DP-45	N46° 8.426'	W113° 22.747'			DP-48
Drop Point	DP-48	N46° 7.478'	W113° 21.740'			End of 883 rd.
Drop Point	DP-50	N46° 7.262'	W113° 19.769'			DP 890
Drop Point	DP-55	N46° 7.499'	W113° 16.759'			Drop point 55. Approx MP 5.5