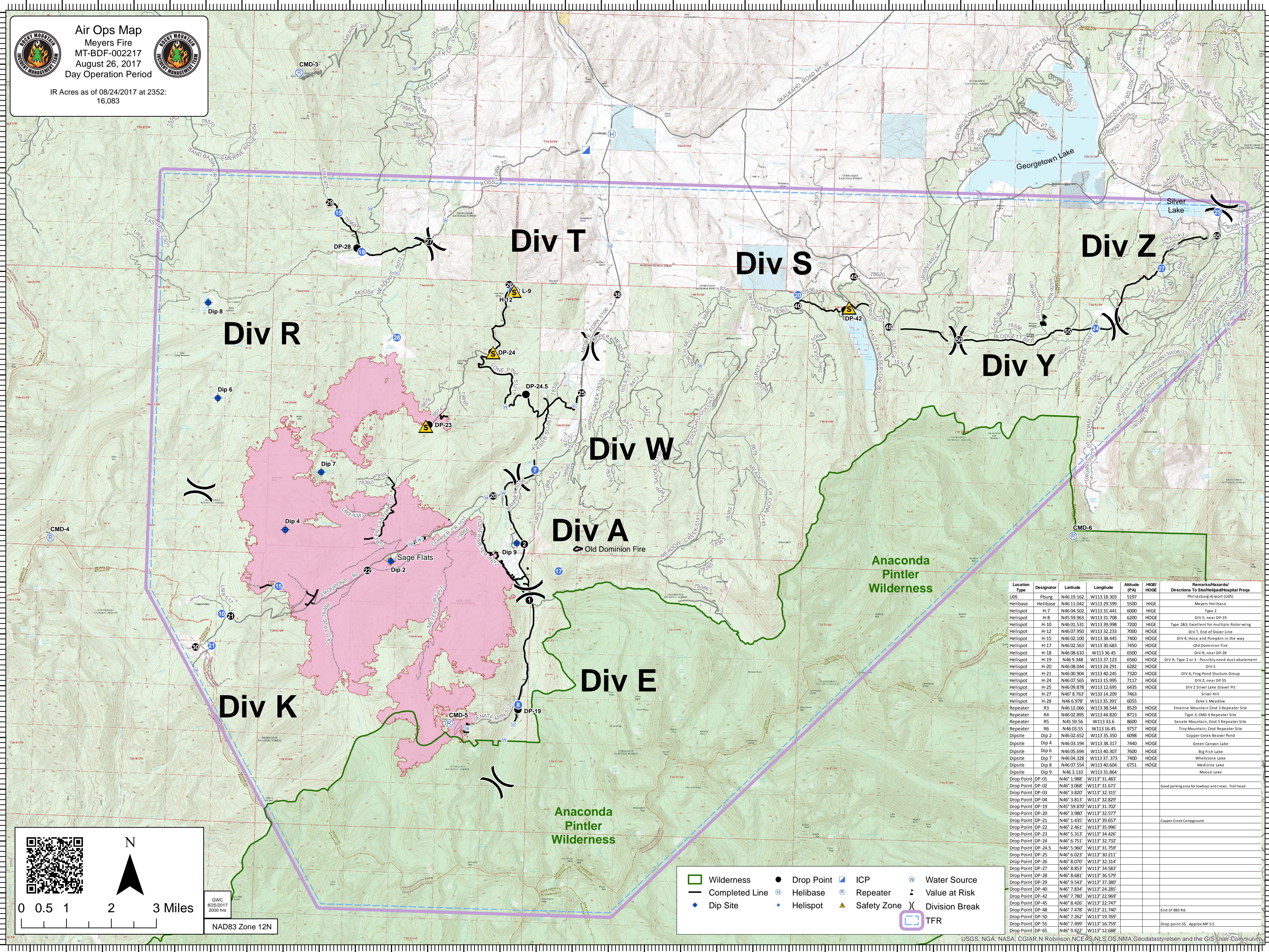




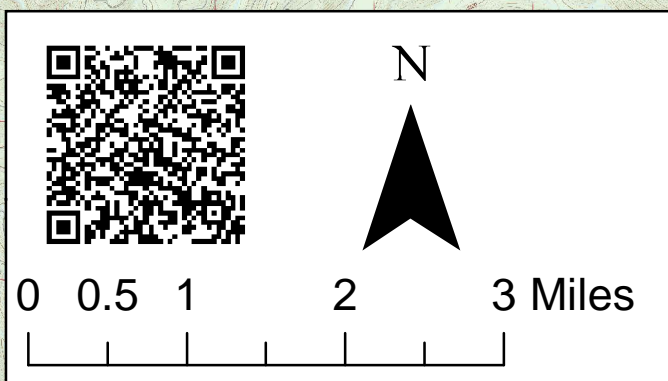
Air Ops Map
 Meyers Fire
 MT-BDF-002217
 August 26, 2017
 Day Operation Period



IR Acres as of 08/24/2017 at 2352:
 16,083



Location Type	Designator	Latitude	Longitude	Altitude (PA)	HIGE/HOGE	Remarks/Hazards/Directions To Site/Helipad/Hospital/Freqs
UOS	Pburg	N46 19.162	W113 18.303	5197	HIGE	Phillipsburg Airport (UOS)
Helibase	Helibase	N46 11.042	W113 29.599	5500	HIGE	Meyers Helibase
Helispot	H-7	N46 04.502	W113 31.441	6000	HIGE	Type 2
Helispot	H-8	N45 59.963	W113 31.708	6200	HIGE	DIV E, near DP-19
Helispot	H-10	N46 01.531	W113 39.998	7200	HIGE	Type 2&3; Excellent for multiple Rotor-wing
Helispot	H-12	N46 07.950	W113 32.233	7000	HIGE	DIV T, End of Dozer Line
Helispot	H-15	N46 02.100	W113 38.445	7400	HIGE	DIV K; Hose and Pumpkin in the way
Helispot	H-17	N46 02.563	W113 30.683	7450	HIGE	Old Dominion Fire
Helispot	H-18	N46 08.610	W113 36.45	6500	HIGE	DIV R; near DP-28
Helispot	H-19	N46 9.348	W113 37.123	6560	HIGE	DIV R; Type 2 or 3 - Possibly need dust abatement
Helispot	H-20	N46 08.044	W113 24.291	6382	HIGE	DIV S
Helispot	H-21	N46 00.904	W113 40.245	7320	HIGE	DIV K; Frog Pond Structure Group
Helispot	H-24	N46 07.565	W113 15.995	7117	HIGE	DIV Z, near DP 55
Helispot	H-25	N46 09.878	W113 12.695	6435	HIGE	DIV Z Silver Lake Gravel Pit
Helispot	H-27	N46 8.763	W113 14.209	7463	HIGE	Silver Hill
Helispot	H-28	N46 6.978	W113 35.391	6055	HIGE	Zeke's Meadow
Repeater	R3	N46 12.066	W113 38.544	8529	HIGE	Emerine Mountain Cmd 3 Repeater Site
Repeater	R4	N46 02.895	W113 44.820	8713	HIGE	Type 3; Cmd 4 Repeater Site
Repeater	R5	N45 59.56	W113 33.6	8600	HIGE	Senate Mountain, Cmd 5 Repeater Site
Repeater	R6	N46 03.55	W113 16.45	9757	HIGE	Tiny Mountain, Cmd Repeater Site
Dipsite	Dip 2	N46 02.652	W113 35.350	6098	HIGE	Copper Creek Beaver Pond
Dipsite	Dip 4	N46 03.194	W113 38.317	7440	HIGE	Green Canyon Lake
Dipsite	Dip 6	N46 05.694	W113 40.307	7600	HIGE	Big Fish Lake
Dipsite	Dip 7	N46 04.328	W113 37.373	7400	HIGE	Whetstone Lake
Dipsite	Dip 8	N46 07.554	W113 40.604	6751	HIGE	Medicine Lake
Dipsite	Dip 9	N46 3.110	W113 31.864			Moose Lake
Drop Point	DP-01	N46 1.988	W113 31.483			
Drop Point	DP-02	N46 3.068	W113 31.671			Good parking area for lowboys and crews. Trail head
Drop Point	DP-03	N46 3.820	W113 32.315			
Drop Point	DP-04	N46 3.813	W113 32.829			
Drop Point	DP-19	N45 59.870	W113 31.702			
Drop Point	DP-20	N46 3.980	W113 32.577			
Drop Point	DP-21	N46 1.435	W113 39.657			Copper Creek Campground
Drop Point	DP-22	N46 2.461	W113 35.996			
Drop Point	DP-23	N46 5.313	W113 34.426			
Drop Point	DP-24	N46 6.751	W113 32.732			
Drop Point	DP-24.5	N46 5.960	W113 31.759			
Drop Point	DP-25	N46 6.023	W113 30.211			
Drop Point	DP-26	N46 8.070	W113 32.314			
Drop Point	DP-27	N46 8.853	W113 34.583			
Drop Point	DP-28	N46 8.681	W113 36.579			
Drop Point	DP-29	N46 9.543	W113 37.380			
Drop Point	DP-40	N46 7.834	W113 24.285			
Drop Point	DP-42	N46 7.780	W113 22.969			
Drop Point	DP-45	N46 8.426	W113 22.747			
Drop Point	DP-48	N46 7.478	W113 21.740			End of 883 Rd.
Drop Point	DP-50	N46 7.262	W113 19.769			
Drop Point	DP-55	N46 7.499	W113 16.759			Drop point 55. Approx MP 5.5
Drop Point	DP-65	N46 9.422	W113 12.688			



- ▭ Wilderness
- Drop Point
- ▣ ICP
- ⊙ Water Source
- Completed Line
- ⊕ Helibase
- ⊕ Repeater
- ⊕ Value at Risk
- ◆ Dip Site
- Helispot
- ▲ Safety Zone
- ⌘ Division Break
- ⊕ TFR