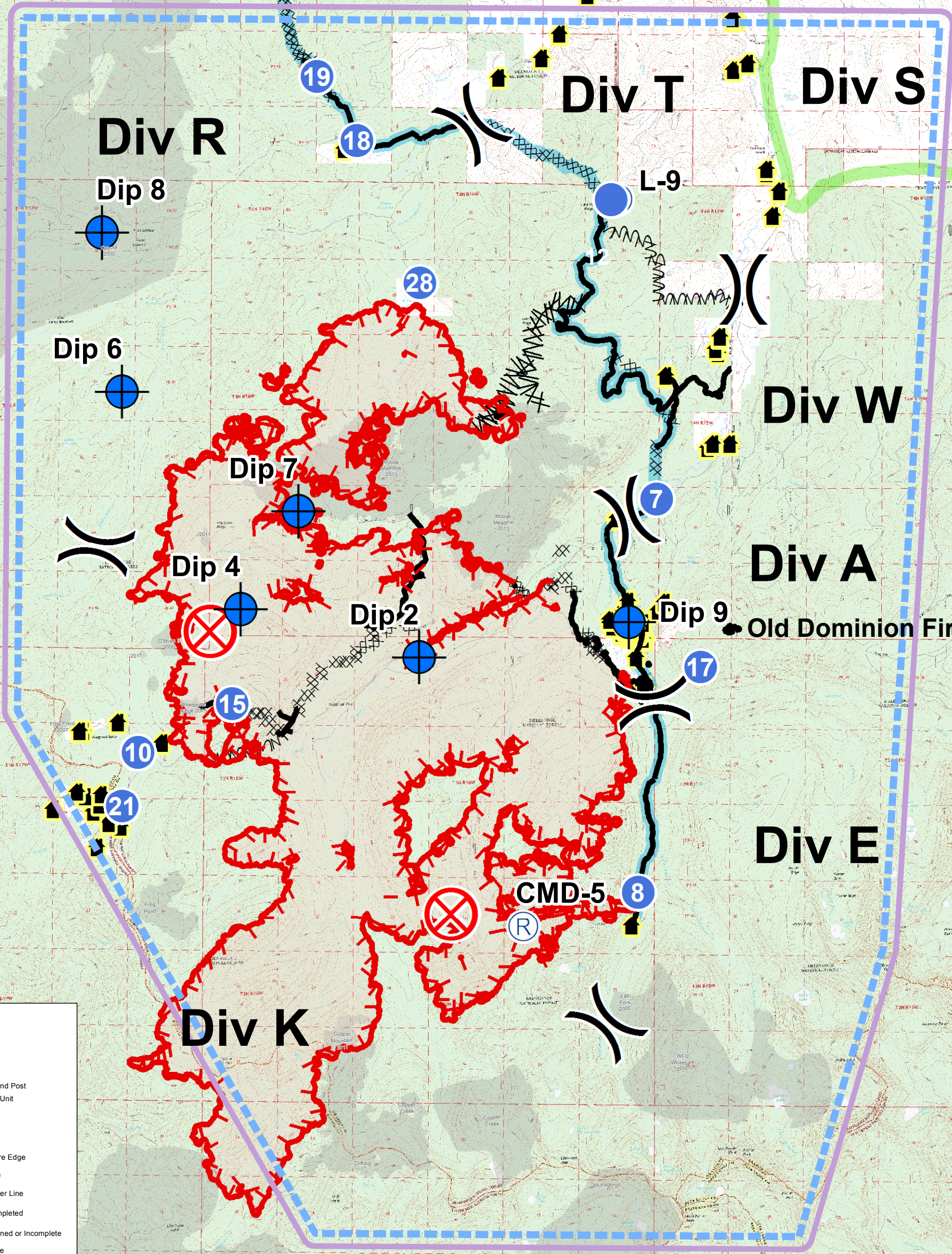
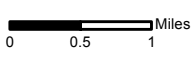


Ⓡ CMD-3



Legend

- Structures
- Dip Site
- Drop Point
- Helispot
- ▲ Incident Command Post
- Mobile Weather Unit
- Repeater
- Water Source
-) Division Break
- Uncontrolled Fire Edge
- Completed Line
- X Completed Dozer Line
- ^ Line Break Completed
- M Fire Break Planned or Incomplete
- Planned Fire Line
- Contingency Line
- Primary Line
- Fire History Post 1980
- Private
- State
- USFS
- TFR



Helispots						
Location Type	Designator	Latitude	Longitude	Altitude (PA)	HIGE/HOGE	Remarks/Hazards/Directions To Site/Helipad/Hospital Freqs
Helispot	H-7	N46 04.502	W113 31.441	6000	HIGE	Type 2
Helispot	H-8	N45 59.963	W113 31.708	6200	HOGE	DIV E, near DP-19
Helispot	H-10	N46 01.531	W113 39.998	7200	HIGE	Type 2&3; Excellent for multiple Rotor-wing
Helispot	H-12	N46 07.950	W113 32.233	7000	HOGE	DIV T, End of Dozer Line
Helispot	H-15	N46 02.100	W113 38.445	7400	HOGE	DIV K; Hose and Pumpkin in the way
Helispot	H-17	N46 02.563	W113 30.683	7450	HOGE	Old Dominion Fire
Helispot	H-18	N46 08.610	W113 36.45	6500	HOGE	DIV R; near DP-28
Helispot	H-19	N46 9.348	W113 37.123	6560	HOGE	DIV R; Type 2 or 3 - Possibly need dust abatement
Helispot	H-20	N46 08.044	W113 24.291	6282	HOGE	DIV S
Helispot	H-21	N46 00.904	W113 40.245	7320	HOGE	DIV K, Frog Pond Stucture Group
Helispot	H-24	N46 07.565	W113 15.995	7117	HOGE	DIV Z, near DP 55
Helispot	H-25	N46 09.878	W113 12.695	6435	HOGE	DIV Z Silver Lake Gravel Pit
Helispot	H-27	N46° 8.763'	W133 14.209	7463		Silver Hill
Helispot	H-28	N46 6.978'	W113 35.391'	6055		Zeke's Meadow
Dipsite						
Location Type	Designator	Latitude	Longitude	Altitude (PA)	HIGE/HOGE	Remarks/Hazards/Directions To Site/Helipad/Hospital Freqs
Dipsite	Dip 2	N46 02.652	W113 35.350	6098	HOGE	Copper Creek Beaver Pond
Dipsite	Dip 4	N46 03.194	W113 38.317	7440	HOGE	Green Canyon Lake
Dipsite	Dip 6	N46 05.694	W113 40.307	7600	HOGE	Big Fish Lake
Dipsite	Dip 7	N46 04.328	W113 37. 373	7400	HOGE	Whetstone Lake
Dipsite	Dip 8	N46 07.554	W113 40.604	6751	HOGE	Medicine Lake
Dipsite	Dip 9	N46 3.110	W113 31.864			Moose Lake
Repeater						
Location Type	Designator	Latitude	Longitude	Altitude (PA)	HIGE/HOGE	Remarks/Hazards/Directions To Site/Helipad/Hospital Freqs
Repeater	R3	N46 12.066	W113 38.544	8529	HOGE	Emerine Mountain Cmd 3 Repeater Site
Repeater	R4	N46 02.895	W113 44.820	8713	HOGE	Type 3; CMD 4 Repeater Site
Repeater	R5	N45 59.56	W113 33.6	8600	HOGE	Senate Mountain, Cmd 5 Repeater Site
Repeater	R6	N46 03.55	W113 16.45	9757	HOGE	Tiny Mountain, Cmd Repeater Site