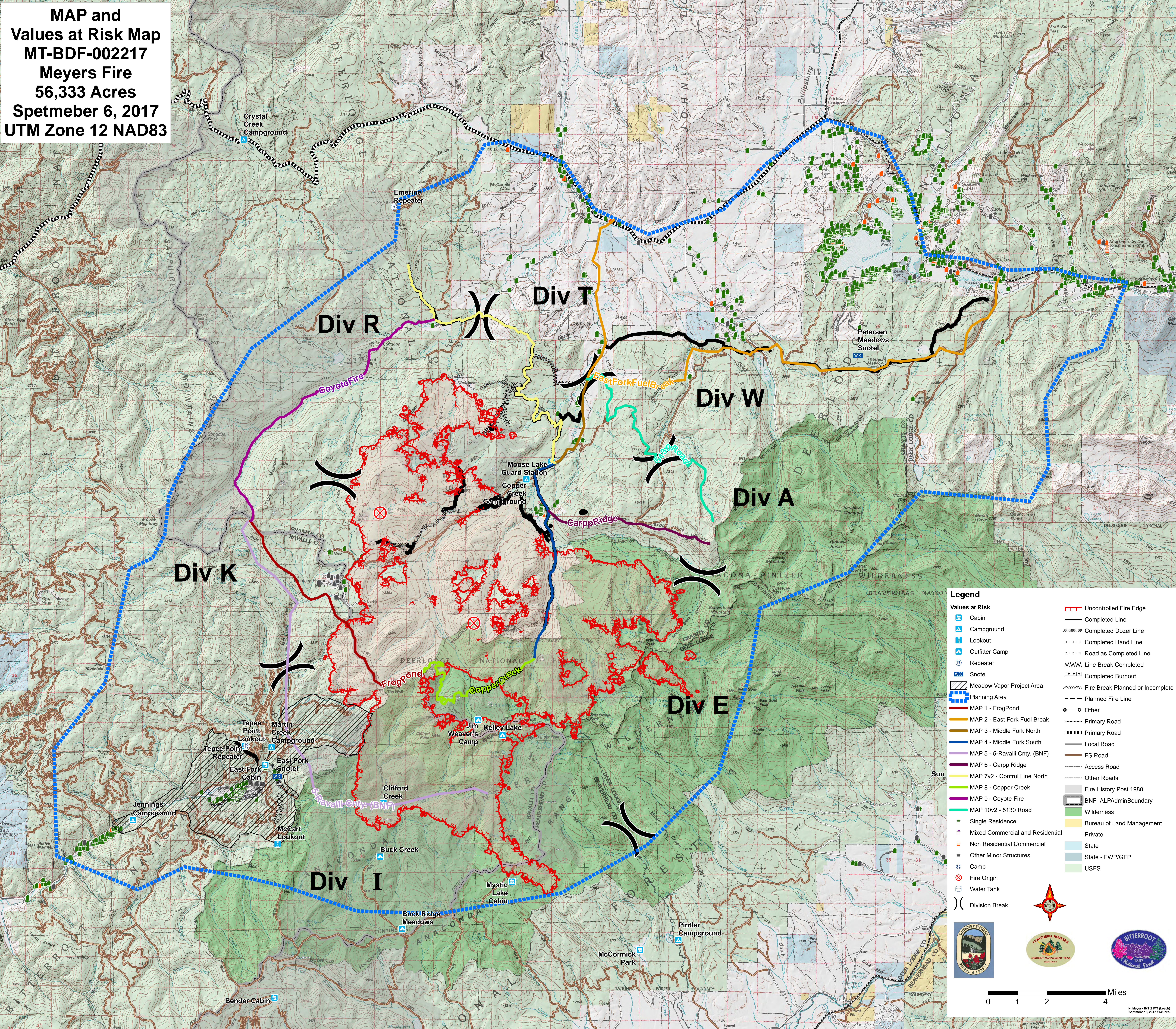


**MAP and Values at Risk Map  
MT-BDF-002217  
Meyers Fire  
56,333 Acres  
Spetmeber 6, 2017  
UTM Zone 12 NAD83**



**Legend**

Cabin	Uncontrolled Fire Edge
Campground	Completed Line
Lookout	Completed Dozer Line
Outfitter Camp	Completed Hand Line
Repeater	Road as Completed Line
Snotel	Line Break Completed
Meadow Vapor Project Area	Fire Break Planned or Incomplete
Planning Area	Planned Fire Line
MAP 1 - FrogPond	Other
MAP 2 - East Fork Fuel Break	Primary Road
MAP 3 - Middle Fork North	Primary Road
MAP 4 - Middle Fork South	Local Road
MAP 5 - Ravalli Cnty. (BNF)	FS Road
MAP 6 - Carpp Ridge	Access Road
MAP 7v2 - Control Line North	Other Roads
MAP 8 - Copper Creek	Fire History Post 1980
MAP 9 - Coyote Fire	BNF_ALPAdminBoundary
MAP 10v2 - 5130 Road	Wilderness
Sun	Bureau of Land Management
Single Residence	Private
Mixed Commercial and Residential	State
Non Residential Commercial	State - FWP/GFP
Other Minor Structures	USFS
Camp	
Fire Origin	
Water Tank	
Division Break	

North Arrow

Bureau of Land Management

Northern Rockies Incident Management Team

Bitterroot National Forest

0 1 2 4 Miles

N. Meyer - IMT 2 (Leach)  
September 6, 2017 1155 hrs.