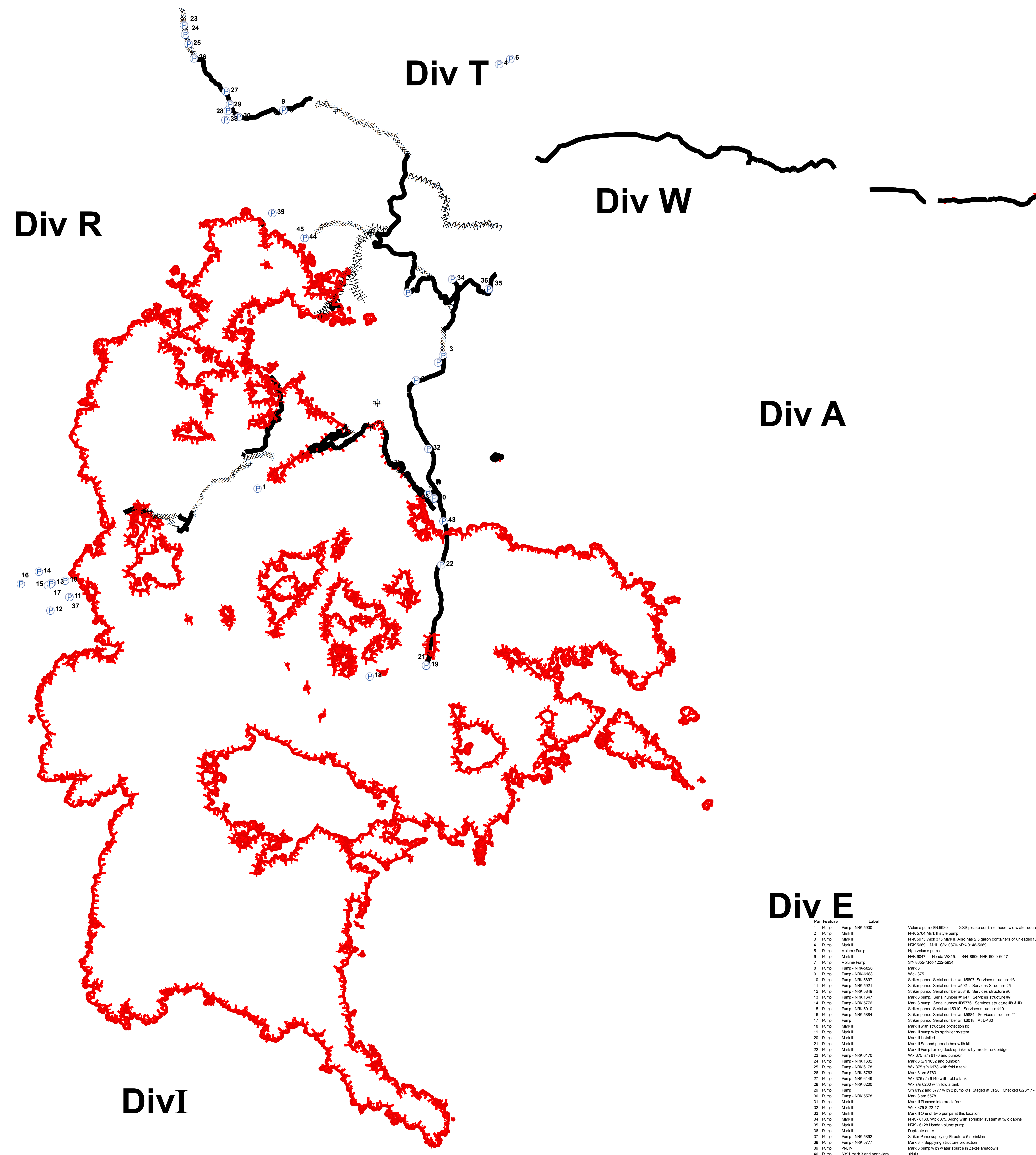
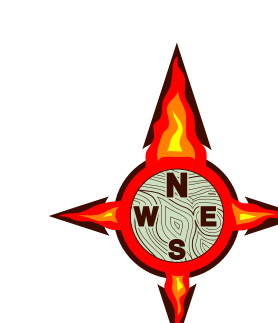


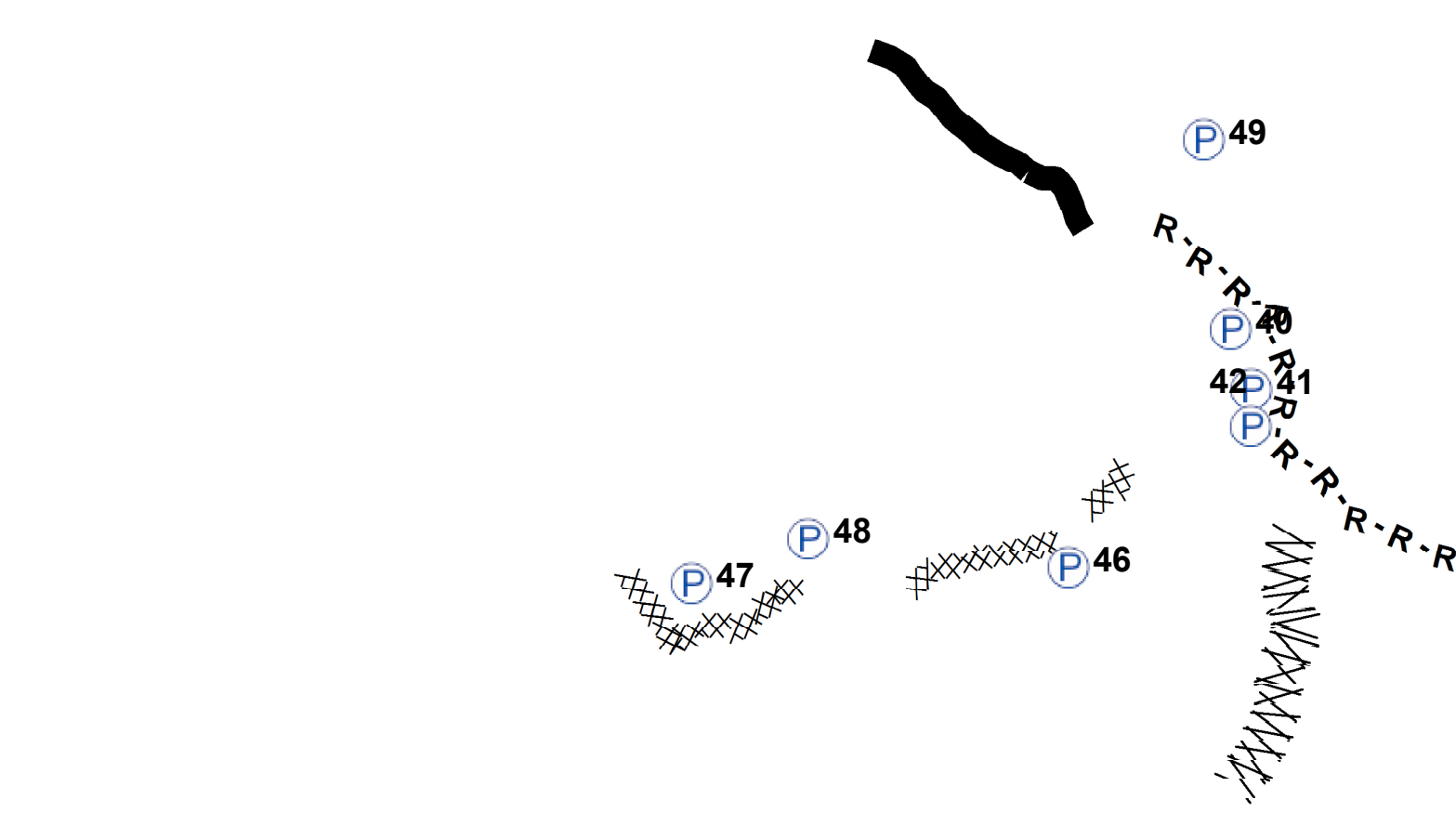


**Property Map**  
**MT-BDF-002217**  
**Meyers Fire**  
**56,333 Acres**  
**September 6, 2017**  
**UTM Zone 12 NAD83**



### Legend

- Single Residence
- Mixed Commercial and Residential
- Non Residential Commercial
- Other Minor Structures
- Closure
- Dip Site
- Dip Site
- Drop Point
- Fire Origin
- Gate
- Helispot
- Incident Command Post
- Mobile Weather Unit
- Pump
- Repeater
- Safety Zone
- Spike Camp
- Water Source
- Value at Risk
- Lookout Tower
- Division Break
- Uncontrolled Fire Edge
- Completed Line
- Completed Burnout
- Completed Dozer Line
- Line Break Completed
- Fire Break Planned or Incomplete
- Road as Completed Line
- Planned Fire Line
- Proposed Dozer Line
- Primary Road
- Local Road
- FS Road
- Access Road
- Fire History Post 1980
- Contingency Line
- Private
- State
- USFS
- Forest Boundary

## Div E

PK	Feature	Label	Comments	Latitude	Longitude
1	Pump	NRK 5930	Volume pump SN5930. GIS please combine these two water source sites and please add the pump info. Thanks	40° 2' 46.7" N	113° 35' 52.3" W
2	Pump	NRK 5704	NRK 5704 Mark II style pump.	40° 4' 56.4" N	113° 31' 5.62" W
3	Pump	NRK 5930	NRK 5930 Mark II style pump. Also has 2 5 gallon containers of unleaded fuel	40° 4' 57.7" N	113° 31' 4.67" W
4	Pump	NRK 5930	NRK 5930. Mark II. SN: 0870-NRK-0148-5659	40° 4' 57.7" N	113° 31' 4.67" W
5	Pump	NRK 5930	NRK 5930. Mark II. SN: 0870-NRK-0148-5659	40° 4' 57.7" N	113° 31' 4.67" W
6	Pump	NRK 5930	NRK 5930. Mark II. SN: 0870-NRK-0148-5659	40° 4' 57.7" N	113° 31' 4.67" W
7	Pump	NRK 5930	NRK 5930. Mark II. SN: 0870-NRK-0148-5659	40° 4' 57.7" N	113° 31' 4.67" W
8	Pump	NRK 5930	NRK 5930. Mark II. SN: 0870-NRK-0148-5659	40° 4' 57.7" N	113° 31' 4.67" W
9	Pump	NRK 5930	NRK 5930. Mark II. SN: 0870-NRK-0148-5659	40° 4' 57.7" N	113° 31' 4.67" W
10	Pump	NRK 5930	NRK 5930. Mark II. SN: 0870-NRK-0148-5659	40° 4' 57.7" N	113° 31' 4.67" W
11	Pump	NRK 5930	NRK 5930. Mark II. SN: 0870-NRK-0148-5659	40° 4' 57.7" N	113° 31' 4.67" W
12	Pump	NRK 5930	NRK 5930. Mark II. SN: 0870-NRK-0148-5659	40° 4' 57.7" N	113° 31' 4.67" W
13	Pump	NRK 5930	NRK 5930. Mark II. SN: 0870-NRK-0148-5659	40° 4' 57.7" N	113° 31' 4.67" W
14	Pump	NRK 5930	NRK 5930. Mark II. SN: 0870-NRK-0148-5659	40° 4' 57.7" N	113° 31' 4.67" W
15	Pump	NRK 5930	NRK 5930. Mark II. SN: 0870-NRK-0148-5659	40° 4' 57.7" N	113° 31' 4.67" W
16	Pump	NRK 5930	NRK 5930. Mark II. SN: 0870-NRK-0148-5659	40° 4' 57.7" N	113° 31' 4.67" W
17	Pump	NRK 5930	NRK 5930. Mark II. SN: 0870-NRK-0148-5659	40° 4' 57.7" N	113° 31' 4.67" W
18	Pump	NRK 5930	NRK 5930. Mark II. SN: 0870-NRK-0148-5659	40° 4' 57.7" N	113° 31' 4.67" W
19	Pump	NRK 5930	NRK 5930. Mark II. SN: 0870-NRK-0148-5659	40° 4' 57.7" N	113° 31' 4.67" W
20	Pump	NRK 5930	NRK 5930. Mark II. SN: 0870-NRK-0148-5659	40° 4' 57.7" N	113° 31' 4.67" W
21	Pump	NRK 5930	NRK 5930. Mark II. SN: 0870-NRK-0148-5659	40° 4' 57.7" N	113° 31' 4.67" W
22	Pump	NRK 5930	NRK 5930. Mark II. SN: 0870-NRK-0148-5659	40° 4' 57.7" N	113° 31' 4.67" W
23	Pump	NRK 5930	NRK 5930. Mark II. SN: 0870-NRK-0148-5659	40° 4' 57.7" N	113° 31' 4.67" W
24	Pump	NRK 5930	NRK 5930. Mark II. SN: 0870-NRK-0148-5659	40° 4' 57.7" N	113° 31' 4.67" W
25	Pump	NRK 5930	NRK 5930. Mark II. SN: 0870-NRK-0148-5659	40° 4' 57.7" N	113° 31' 4.67" W
26	Pump	NRK 5930	NRK 5930. Mark II. SN: 0870-NRK-0148-5659	40° 4' 57.7" N	113° 31' 4.67" W
27	Pump	NRK 5930	NRK 5930. Mark II. SN: 0870-NRK-0148-5659	40° 4' 57.7" N	113° 31' 4.67" W
28	Pump	NRK 5930	NRK 5930. Mark II. SN: 0870-NRK-0148-5659	40° 4' 57.7" N	113° 31' 4.67" W
29	Pump	NRK 5930	NRK 5930. Mark II. SN: 0870-NRK-0148-5659	40° 4' 57.7" N	113° 31' 4.67" W
30	Pump	NRK 5930	NRK 5930. Mark II. SN: 0870-NRK-0148-5659	40° 4' 57.7" N	113° 31' 4.67" W
31	Pump	NRK 5930	NRK 5930. Mark II. SN: 0870-NRK-0148-5659	40° 4' 57.7" N	113° 31' 4.67" W
32	Pump	NRK 5930	NRK 5930. Mark II. SN: 0870-NRK-0148-5659	40° 4' 57.7" N	113° 31' 4.67" W
33	Pump	NRK 5930	NRK 5930. Mark II. SN: 0870-NRK-0148-5659	40° 4' 57.7" N	113° 31' 4.67" W
34	Pump	NRK 5930	NRK 5930. Mark II. SN: 0870-NRK-0148-5659	40° 4' 57.7" N	113° 31' 4.67" W
35	Pump	NRK 5930	NRK 5930. Mark II. SN: 0870-NRK-0148-5659	40° 4' 57.7" N	113° 31' 4.67" W
36	Pump	NRK 5930	NRK 5930. Mark II. SN: 0870-NRK-0148-5659	40° 4' 57.7" N	113° 31' 4.67" W
37	Pump	NRK 5930	NRK 5930. Mark II. SN: 0870-NRK-0148-5659	40° 4' 57.7" N	113° 31' 4.67" W
38	Pump	NRK 5930	NRK 5930. Mark II. SN: 0870-NRK-0148-5659	40° 4' 57.7" N	113° 31' 4.67" W
39	Pump	NRK 5930	NRK 5930. Mark II. SN: 0870-NRK-0148-5659	40° 4' 57.7" N	113° 31' 4.67" W
40	Pump	NRK 5930	NRK 5930. Mark II. SN: 0870-NRK-0148-5659	40° 4' 57.7" N	113° 31' 4.67" W
41	Pump	NRK 5930	NRK 5930. Mark II. SN: 0870-NRK-0148-5659	40° 4' 57.7" N	113° 31' 4.67" W
42	Pump	NRK 5930	NRK 5930. Mark II. SN: 0870-NRK-0148-5659	40° 4' 57.7" N	113° 31' 4.67" W
43	Pump	NRK 5930	NRK 5930. Mark II. SN: 0870-NRK-0148-5659	40° 4' 57.7" N	113° 31' 4.67" W
44	Pump	NRK 5930	NRK 5930. Mark II. SN: 0870-NRK-0148-5659	40° 4' 57.7" N	113° 31' 4.67" W
45	Pump	NRK 5930	NRK 5930. Mark II. SN: 0870-NRK-0148-5659	40° 4' 57.7" N	113° 31' 4.67" W
46	Pump	NRK 5930	NRK 5930. Mark II. SN: 0870-NRK-0148-5659	40° 4' 57.7" N	113° 31' 4.67" W
47	Pump	NRK 5930	NRK 5930. Mark II. SN: 0870-NRK-0148-5659	40° 4' 57.7" N	113° 31' 4.67" W
48	Pump	NRK 5930	NRK 5930. Mark II. SN: 0870-NRK-0148-5659	40° 4' 57.7" N	113° 31' 4.67" W
49	Pump	NRK 5930	NRK 5930. Mark II. SN: 0870-NRK-0148-5659	40° 4' 57.7" N	113° 31' 4.67" W