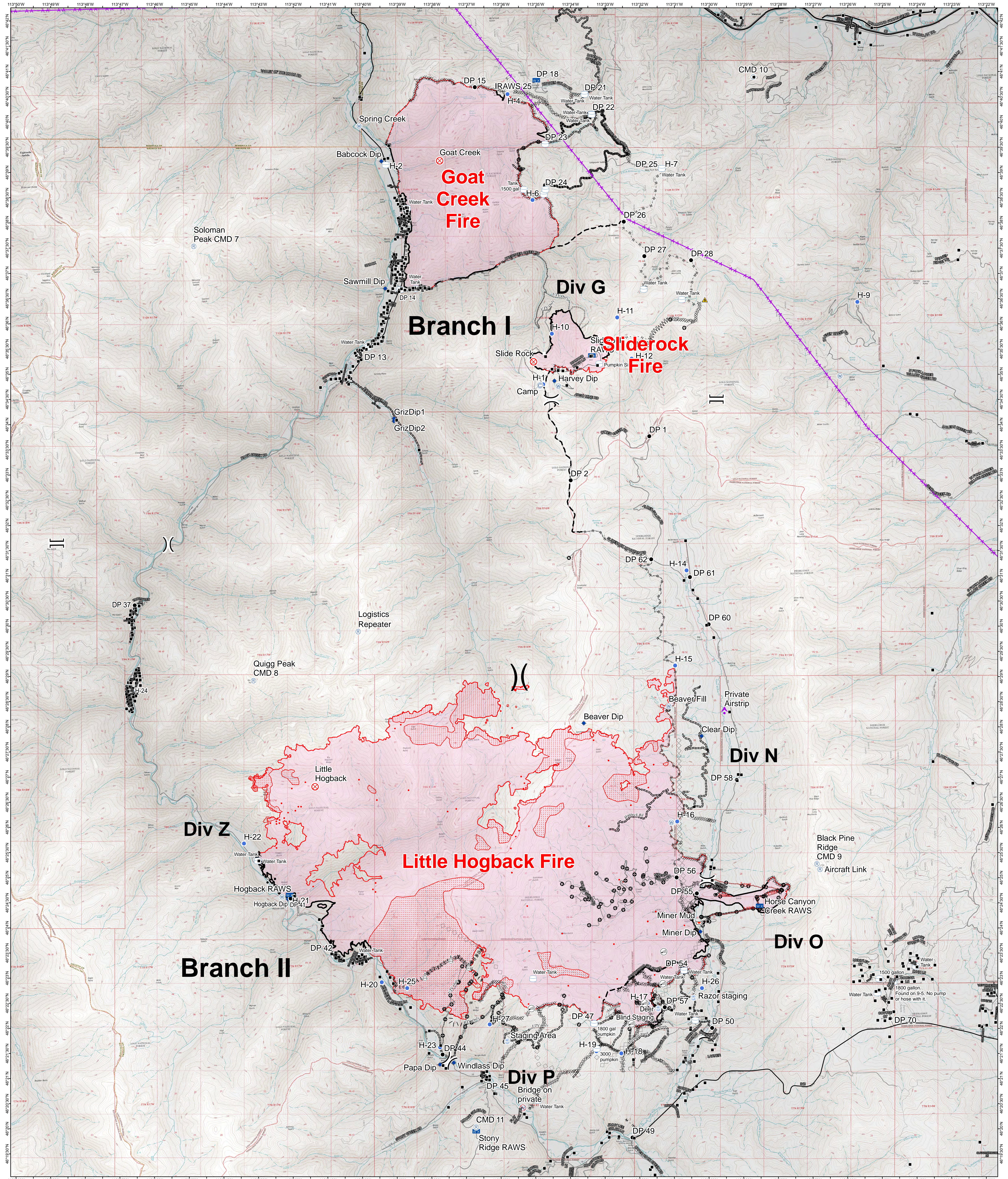


# Branch I & II Operations Map

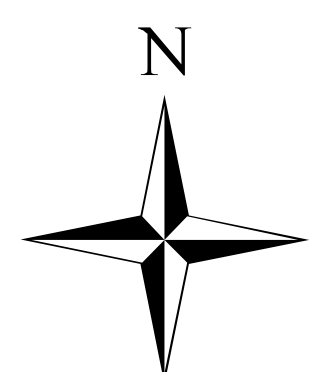
9/8/2017



## Meyers Sapphire Complex

MT-BDF-002217

Fire perimeter as of  
09/06/2017 0124  
Goat Creek: 8,305 acres  
Sliderock: 901 acres  
Little Hogback: 34,310 acres



Structure	Internet Access	Water Source	Completed Dozer Line	Planned Fire Line	Access Road	Fire Perimeter
Aerial Hazard	Mobile Weather Unit	Water Tank	Completed Hand Line	Aerial Hazard	UTV Only	Fire OUTLINE
Camp	Repeater	Restricted Water Source	R-R-R Road as Completed Line	Aerial Retardant Drop	Isolated Heat	Scattered Heat
Dip Site	Retardant/Mud Pit	Safety Zone	Line Break Completed	Air Tanker Retardant	Intense Heat	Intense Heat
Drop Point	Sling Site	Division Break	Proposed Burnout	Other	2-track	
Fire Origin	Staging Area	Branch Break	Completed Burnout			
Helispot		Completed Line				

