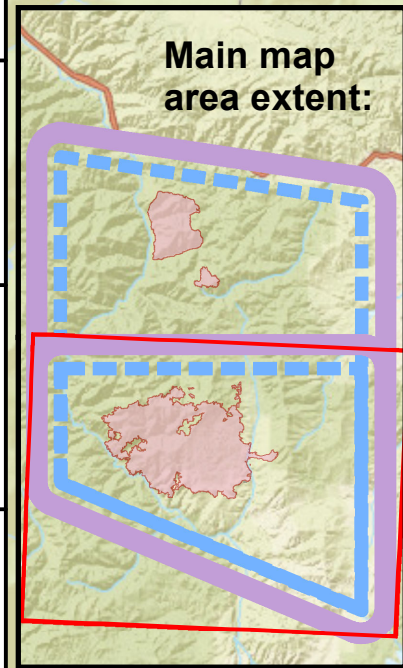
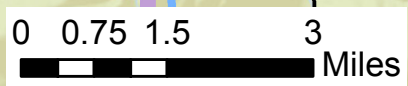


Air Operations Pilot Map - Branch II

9/10/2017

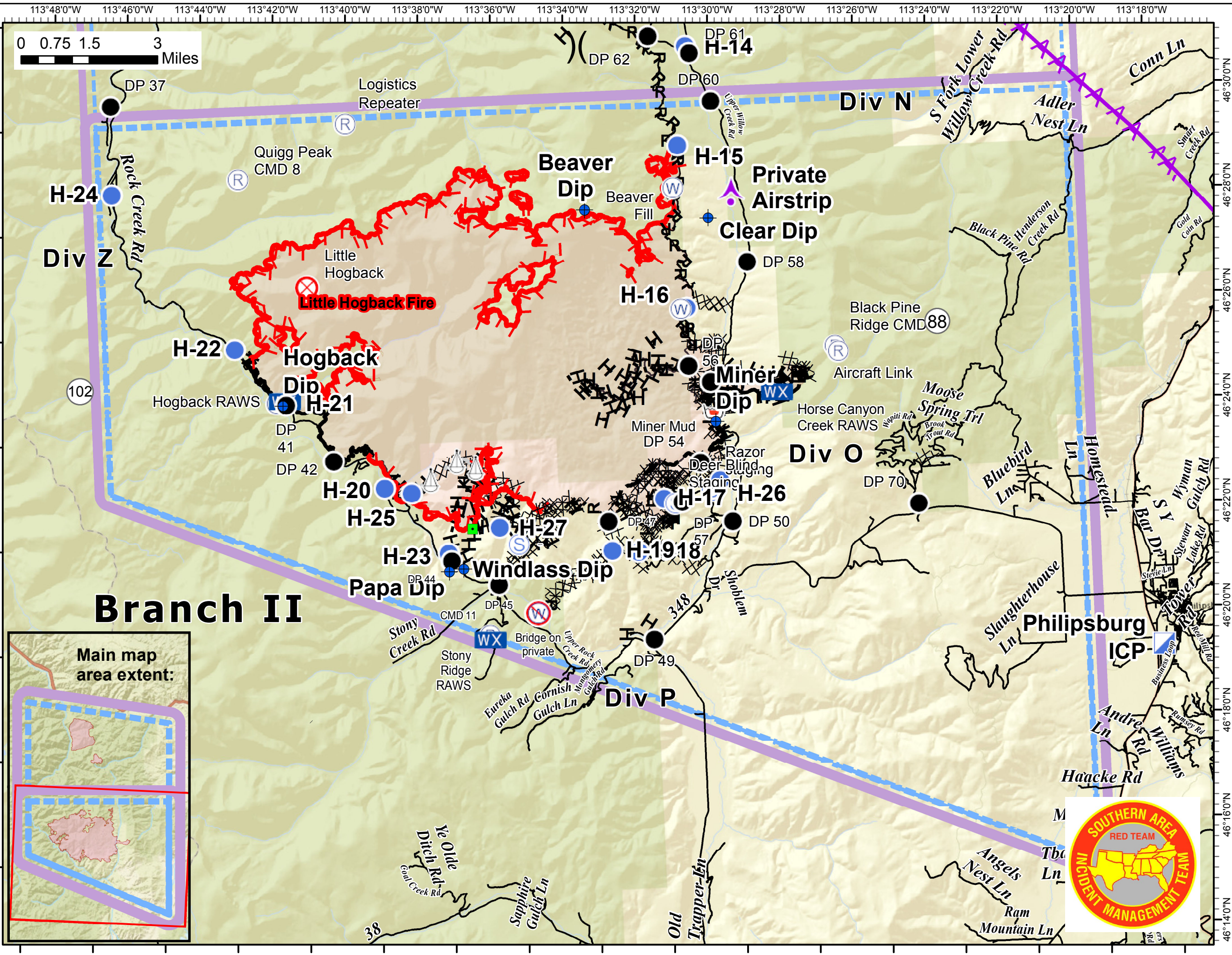


- Aerial Hazard
- Dip Site
- Drop Point
- Fire Origin
- Helispot
- Landmark
- Mobile Weather Unit
- Repeater
- Retardant/Mud Pit
- Sling Site
- Staging Area
- Water Source
- Restricted Water Source
- Value at Risk
- Division Break
- Roads
- Uncontrolled Fire Edge
- Completed Line
- Completed Dozer Line
- Completed Hand Line
- Road as Completed Line
- Line Break Completed
- Proposed Burnout
- Completed Burnout
- Planned Fire Line
- Aerial Retardant Drop
- Air Tanker Retardant



Meyers Sapphire Complex MT-BDF-002217

Fire perimeter as of 9/9/2017 0117
 Little Hogback:
 34,400 acres



SAPPHIRE PILOT LOCATION INFORMATION Updated September 9, 2017

Name	Type	Fire	Latitude	Longitude	Elevation	IGE / OGE	Remarks
Grizzley Dip 1		Sliderock	N46°34.121'	W113°39.091'	4140'		Lower dip site
Grizzley Dip 2		Sliderock	N46°34.070'	W113°39.091'	4145'		Upper dip site by house - OFF LIMITS
Harvey Dip		Sliderock	N46°34.869'	W113°34.462'	6795'		Slow to regenerate - Powerfill / Fast bucket
Hogback Dip		Hogback	N46°24.583'	W113°42.174'	4520'		Downslope from H21 & Hogback Cabin
Beaver Dip		Hogback	N46°28.072'	W113°33.615'	7520'		Sanitize bucket before Dipping
Babcock Dip		Goat Creek	N46°39.160'	W113°39.332'	3730'		6000 Gallon Pumpkin
Miners MRB		Hogback	N46°24.102'	W113°30.278'	5205'		Along Willow Creek Rd South of DP 55
Miners Dip		Hogback	N46°23.938'	W113°30.243'	5190'		Pond adjacent to Miners MRB
Papa Dip		Hogback	N46° 21.281'	W113° 37.764'	4700'		South of H-23 across Rock Cr
Sawmill Dip		Goat Creek	N46°36.680'	W113°39.360'	3720'		Junction of Sawmill Creek & Babcock Creek
Clear Dip		Hogback	N46°27.816'	W113°30.219'	5700'		In clear cut along the Willow Creek Drainage
Windlass Dip		Hogback	N46°21.317'	W113°37.366'	4740'		Adjacent to Windlass Bridge. Powerfill or smaller buckets recommended
Name	Type	Fire	Latitude	Longitude	Elevation	IGE / OGE	Remarks
Meyers Helibase		Meyers/Sapphire	N46°11.054'	W113°29.567'	5400'	HIGE	
H-1	3	Sliderock	N46°34.802'	W113°34.787'	7130'	HOGE	HOVER HOLE: Occasional use only
H-2	1	Goat Creek	N46°39.160'	W113°39.332'	3730'	HIGE	Large field approximately 5 mi up Rock Creek
H-4	3	Goat Creek	N46°40.553'	W113°35.817'	5905'	HOGE	Y in the road system
H-6	2	Goat Creek	N46°38.456'	W113°35.097'	6635'	HOGE	On Golden Mountain
H-7	3	Goat Creek	N46°39.083'	W113°31.377'	6180'	HOGE	Traffic Control & Dust Abatement REQUIRED
H-9	2	Sliderock	N46°36.437'	W113°25.723'	5350'	HOGE	Field adjacent to road system
H-10		Sliderock	N46° 35.805'	W113° 34.538'	6050'	HOGE	Dust Abatement REQUIRED
H-11	2	Sliderock	N46°36.127'	W113°32.653'	7105'	HOGE	Meadow Northeast of Sliderock
H-12	2	Sliderock	N46°35.312'	W113°32.237'	6920'	HOGE	Grass ridgline east of Sliderock
H-13	2	Sliderock	N46°35.508'	W113°32.318'	7210'	HOGE	Grass ridgline east of Sliderock
H-14	2	Hogback	N46°31.110'	W113°30.650'	5810'	HOGE	Open field between two dirt roads
H-15	2	Hogback	N46°29.219'	W113°30.981'	6040'	HOGE	In logging area. Small staubs flagged
H-16	2	Hogback	N46°26.120'	W113°30.920'	5685'	HOGE	Dust Abatement REQUIRED
H-17	2	Hogback	N46°22.498'	W113°31.770'	6030'	HOGE	Grass meadow between two roads
H-18	2	Hogback	N46°21.505'	W113°32.533'	5900'	HOGE	Grass meadow
H-19	2	Hogback	N46°21.553'	W113°33.260'	6245'	HOGE	SE of Ram Mountain along dozer line
H-20	2	Hogback	N46°22.940'	W113°39.480'	4650'	HOGE	Formerly known as "grassy meadow helispot"
H-21	2	Hogback	N46°24.623'	W113°42.064'	4565'	HOGE	Large meadow near cabin
H-22	2	Hogback	N46°25.680'	W113°43.421'	4470'	HOGE	Large meadow near stream
H-23	2	Hogback	N46°21.628'	W113° 37.763'	4700'	HOGE	North of Papa Dip across Rock Cr
H-24	2	Hogback	N46°28.721'	W113°46.641'	4280'	HOGE	Along Rock Creek Rd in Meadow
H-25	3	Hogback	N46° 22.800'	W113° 38.713'	5560'	HOGE	Ridge top marked with Pink flagging two way flight path
H-26	2	Hogback	N46° 22.804'	W113° 30.207'	5300'	HOGE	
H-27	3	Hogback	N46° 22.08'	W113° 36.33'	6000'	HOGE	South of 'The Wedge'
Cinnabar Sling Site		Cinnabar 3	N46°35.236'	W113°47.570'	6790'	HOGE	West of Cinnabar Incident on ridge
Name	Type	Fire	Latitude	Longitude	Elevation	IGE / OGE	Remarks
CMD 7 Repeater Site	3	Goat Creek	N46°37.534'	W113°44.873'	7620'	HOGE	Welcome Mountain West of Goat Creek
CMD 8 Repeater Site	3	Sliderock	N46°28.198'	W113°43.148'	8425'	HOGE	Quigg Peak West of Sliderock (victor link)
CMD 9 Repeater Site	3	Hogback	N46°25.265'	W113°26.825'	7937'		Black Pine Ridge Aircraft Link also on site
CMD 10 Repeater Site	3	Goat Creek	N46°40.902'	W113°28.682'	5845'		
CMD 11 Repeater Site	3	Hogback	N46°20.042'	W113°36.722'	6000'		Stoney Ridge
Logistics Repeater Site	3	Cinnabar 3	N46°29.893'	W113°40.122'	8203'		