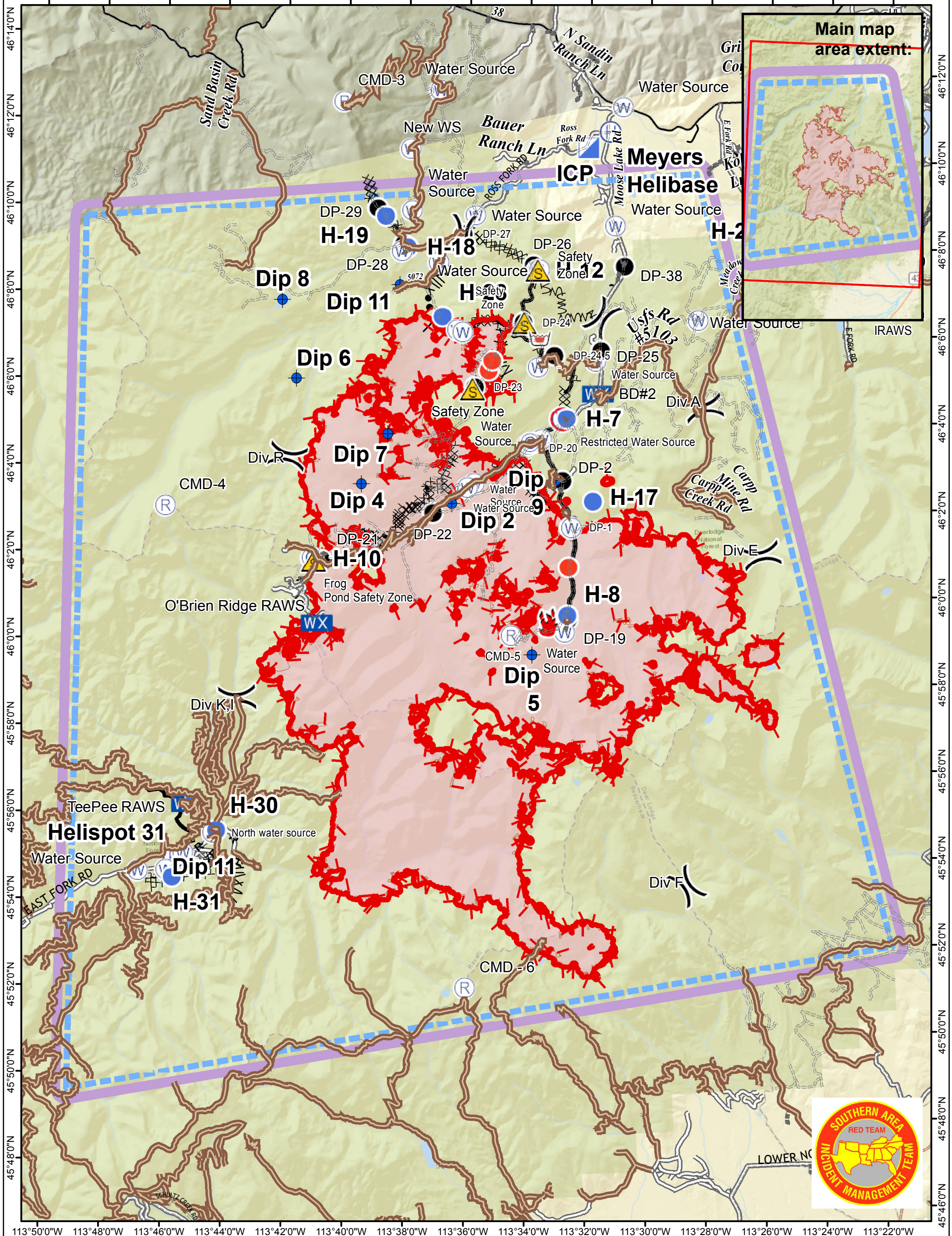


Air Operations Pilot Map - Branch III

9/11/2017



Meyers Sapphire Complex
MT-BDF-002217

Fire Perimeter as of 9/10/2017 1603
 Goat Creek: 8,300 acers
 Sliderock: 900 acers

Division Break	Fire Location	Incident Command Post	Retardant/Mud Pit	Uncontrolled Fire Edge	Road as Completed Line	Completed Burnout
Camp	Helibase	Lookout	Safety Zone	Completed Line	Line Break Completed	Fire Break Planned or Incomplete
Dip Site	Helispot	Mobile Weather Unit	Water Source	Completed Dozer Line	Active Burnout	Planned Fire Line
Drop Point	Hot Spot	Repeater	Restricted Water Source	Completed Hand Line	TFR	Planned Secondary Line

0 1.25 2.5 5 Miles

MEYERS PILOT LOCATION INFORMATION Updated September 9, 2017

Name	Type	Fire	Latitude	Longitude	Elevation	IGE / OGE	Remarks
Babcock Dip		Sapphire Complex	N 46° 39.222'	W 113° 39.456'			6000 gallon collapsible tank.
Beaver Dip		Sapphire Complex	N 46° 28.072'	W 113° 33.615'			
Clear Dip		Sapphire Complex	N 46° 27.816'	W 113° 30.219'			
Dip 2		Meyers	N 46° 2.654'	W 113° 35.354'			
Dip 4		Meyers	N 46° 3.195'	W 113° 38.317'			
Dip 5		Meyers	N 45° 59.096'	W 113° 32.922'			
Dip 6		Meyers	N 46° 5.696'	W 113° 40.308'			
Dip 7		Meyers	N 46° 4.329'	W 113° 37.372'			
Dip 8		Meyers	N 46° 7.530'	W 113° 40.664'			
Dip 9		Meyers	N 46° 3.080'	W 113° 31.879'			
Dip 11		Meyers	N 45° 54.584'	W 113° 45.396'			Add from air ops coordinate table
Dip 11		Meyers	N 46° 7.750'	W 113° 36.760'			Moose Lake Dip, added by AirOps.
GrizDip1		Slide Rock	N 46° 34.121'	W 113° 39.091'			
GrizDip2		Slide Rock	N 46° 34.070'	W 113° 39.091'			
Harvey Dip		Sapphire Complex	N 46° 34.869'	W 113° 34.462'			
Hogback Dip		Sapphire Complex	N 46° 24.577'	W 113° 42.152'			Type I. Good depth
Miner Dip		Sapphire Complex	N 46° 23.927'	W 113° 30.253'			Dipsite for water
Papa Dip		Sapphire Complex	N 46° 21.281'	W 113° 37.764'			Pond with good depth.
Sawmill Dip		Sapphire Complex	N 46° 36.701'	W 113° 39.346'			
Windlass Dip		Sapphire Complex	N 46° 21.317'	W 113° 37.366'			
Name	Type	Fire	Latitude	Longitude	Elevation	IGE / OGE	Remarks
Meyers Helibase		Sapphire Complex	N 46° 11.051'	W 113° 29.571'	5400'		
H-01		Slide Rock	N 46° 34.802'	W 113° 34.787'			
H-02		Slide Rock	N 46° 39.160'	W 113° 39.332'			
H-04		Sapphire Complex	N 46° 40.553'	W 113° 35.817'			
H-06		Sapphire Complex	N 46° 38.456'	W 113° 35.097'			
H-07		Meyers	N 46° 4.502'	W 113° 31.441'			
H-07		Sapphire Complex	N 46° 39.083'	W 113° 31.377'			
H-08		Meyers	N 45° 59.963'	W 113° 31.703'			
H-09		Sapphire Complex	N 46° 36.437'	W 113° 25.723'			
H-10		Meyers	N 46° 1.532'	W 113° 39.998'			
H-10		Sapphire Complex	N 46° 35.805'	W 113° 34.538'			H-10 Type 2&3; Excellent for multiple Rotor-wing
H-11		Sapphire Complex	N 46° 36.127'	W 113° 32.653'			Dust abatement required prior to landing
H-12		Meyers	N 46° 7.948'	W 113° 32.224'			DIV T, End of Dozer Line
H-12		Sapphire Complex	N 46° 35.312'	W 113° 32.237'			
H-13		Sapphire Complex	N 46° 35.508'	W 113° 32.318'			
H-14		Sapphire Complex	N 46° 31.110'	W 113° 30.650'			
H-15		Sapphire Complex	N 46° 29.219'	W 113° 30.981'			
H-16		Little Hogback	N 46° 26.120'	W 113° 30.920'			1 acre site with heavy equipment staging.
H-17		Meyers	N 46° 2.564'	W 113° 30.694'			Old Dominion helispot
H-17		Sapphire Complex	N 46° 22.498'	W 113° 31.770'			
H-18		Meyers	N 46° 8.610'	W 113° 36.450'			DIV R; near DP-28
H-18		Sapphire Complex	N 46° 21.505'	W 113° 32.533'			
H-19		Meyers	N 46° 9.348'	W 113° 37.123'			
H-19		Sapphire Complex	N 46° 21.547'	W 113° 33.252'			
H-20		Meyers	N 46° 8.044'	W 113° 24.291'			
H-20		Sapphire Complex	N 46° 22.920'	W 113° 39.446'			
H-21		Sapphire Complex	N 46° 24.623'	W 113° 42.064'			
H-22		Sapphire Complex	N 46° 25.680'	W 113° 43.421'			
H-23		Sapphire Complex	N 46° 21.625'	W 113° 37.763'			
H-24		Meyers	N 46° 7.567'	W 113° 15.995'			
H-24		Sapphire Complex	N 46° 28.721'	W 113° 46.641'			
H-25		Meyers	N 46° 9.878'	W 113° 12.695'			
H-25		Sapphire Complex	N 46° 22.804'	W 113° 38.713'			
H-26		Sapphire Complex	N 46° 22.804'	W 113° 30.206'			
H-27		Meyers	N 46° 8.763'	W 113° 14.209'			
H-27		Sapphire	N 46° 22.081'	W 113° 36.331'			
H-28		Meyers	N 46° 6.978'	W 113° 35.391'			Zeke's meadows helispot
H-30		Meyers	N 45° 55.363'	W 113° 43.582'			
H-31		Meyers	N 45° 54.340'	W 113° 45.114'			
Name	Type	Fire	Latitude	Longitude	Elevation	IGE / OGE	Remarks
Aircraft Link		Sapphire Complex	N 46° 25.167'	W 113° 26.800'			EL 7955
CMD-3		Meyers	N 46° 12.031'	W 113° 38.343'			Command 3 - Emerine Mtn
CMD-4		Meyers	N 46° 2.895'	W 113° 44.820'			Command 4 - Bare Hill
CMD-5		Meyers	N 45° 59.560'	W 113° 33.600'			Command 5 - Senate Mtn
CMD - 6		Meyers	N 45° 51.490'	W 113° 35.630'			
Soloman Peak CMD 7		Goat Creek	N 46° 37.534'	W 113° 44.873'			EL 7593
Quigg Peak CMD 8		Little Hogback	N 46° 28.918'	W 113° 43.148'			EL 8413
Black Pine Ridge CMD 9		Little Hogback	N 46° 25.275'	W 113° 26.888'			EL 7955
CMD 10		Goat Creek	N 46° 40.893'	W 113° 28.728'			EL 5875
CMD 11		Sapphire Complex	N 46° 20.035'	W 113° 36.719'			
L-9		Meyers	N 46° 7.954'	W 113° 32.125'			Comm Site located near division "T"
Logistics Repeater		Sapphire Complex	N 46° 29.893'	W 113° 40.126'			