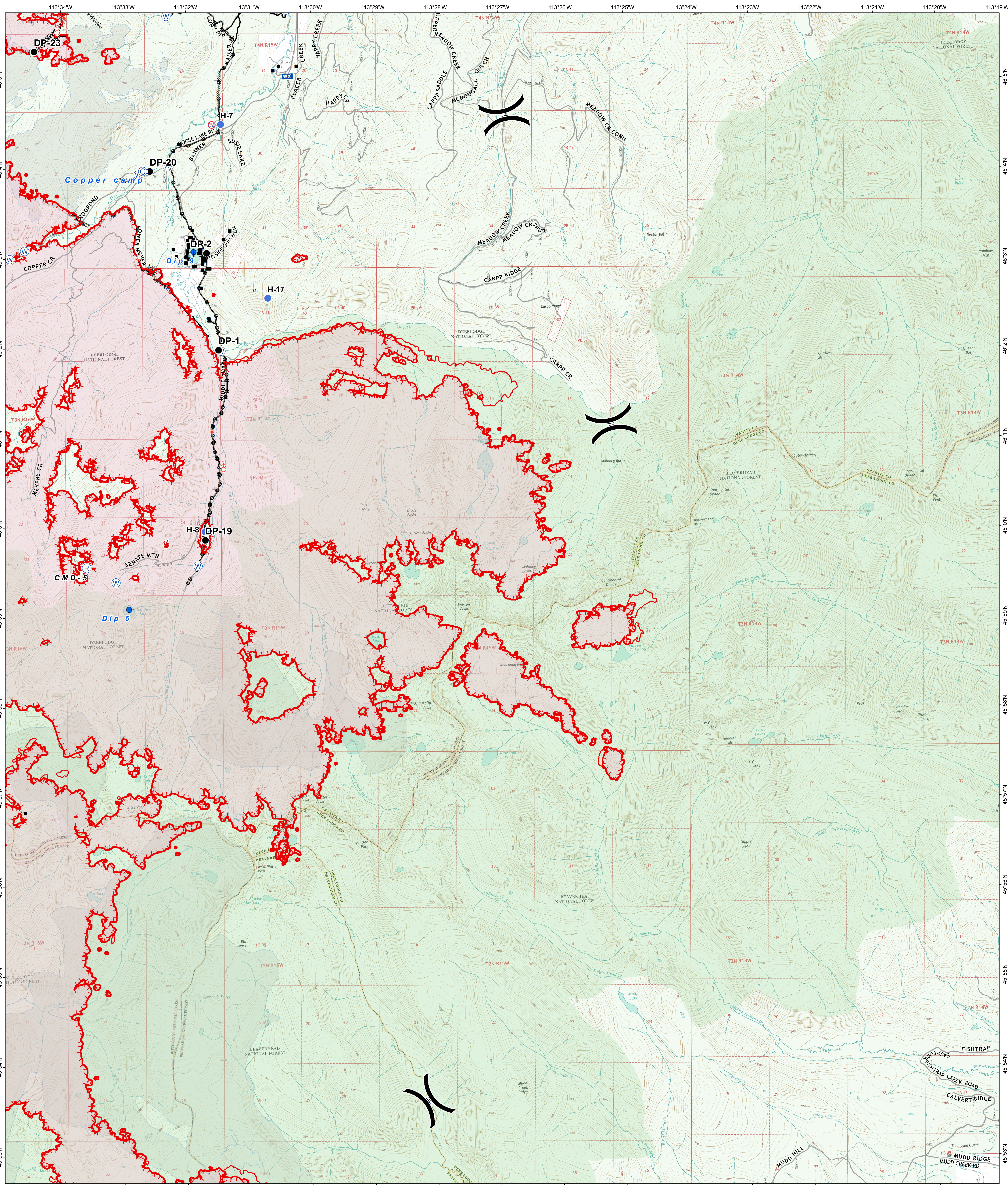


Branch III Div A, E Operations Map

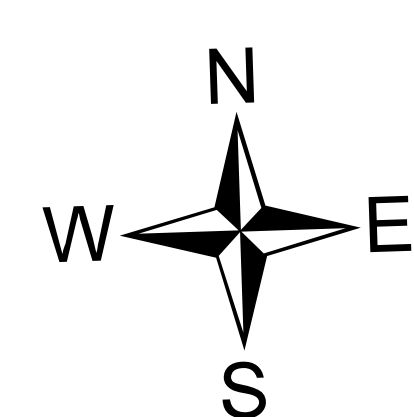
September 12, 2017



Meyers Sapphire Complex

MT-BDF-002217

Fire perimeter as of
09/12/2017 @ 0157 hrs
Meyers Fire: 61,885 acres



- | | | | | |
|-----------------------|------------------------|---------------------------|---------------------------------|----------------|
| ■ Structure | ● Drop Point | ⚡ Spot Fire | ▬ M/W/M Line Break Completed | ▬ Fire History |
|) Division Break | ⦿ Fire Location | ⊕ Water Source | ⋯ Active Burnout | ▬ Private |
| Ⓜ Repeater | ⦿ Helispot | ⊕ Restricted Water Source | ⦿ Other | ▬ USFS |
| Ⓢ Camp | ⦿ Hot Spot | ▬ Uncontrolled Fire Edge | ▬ IR Perimeter | |
| ⦿ Dip Site | ⦿ Internet Access | ▬ Completed Line | ▬ Wildfire Daily Fire Perimeter | |
| Ⓜ Mobile Weather Unit | ⦿ Completed Dozer Line | ▬ Wilderness Boundary | | |

