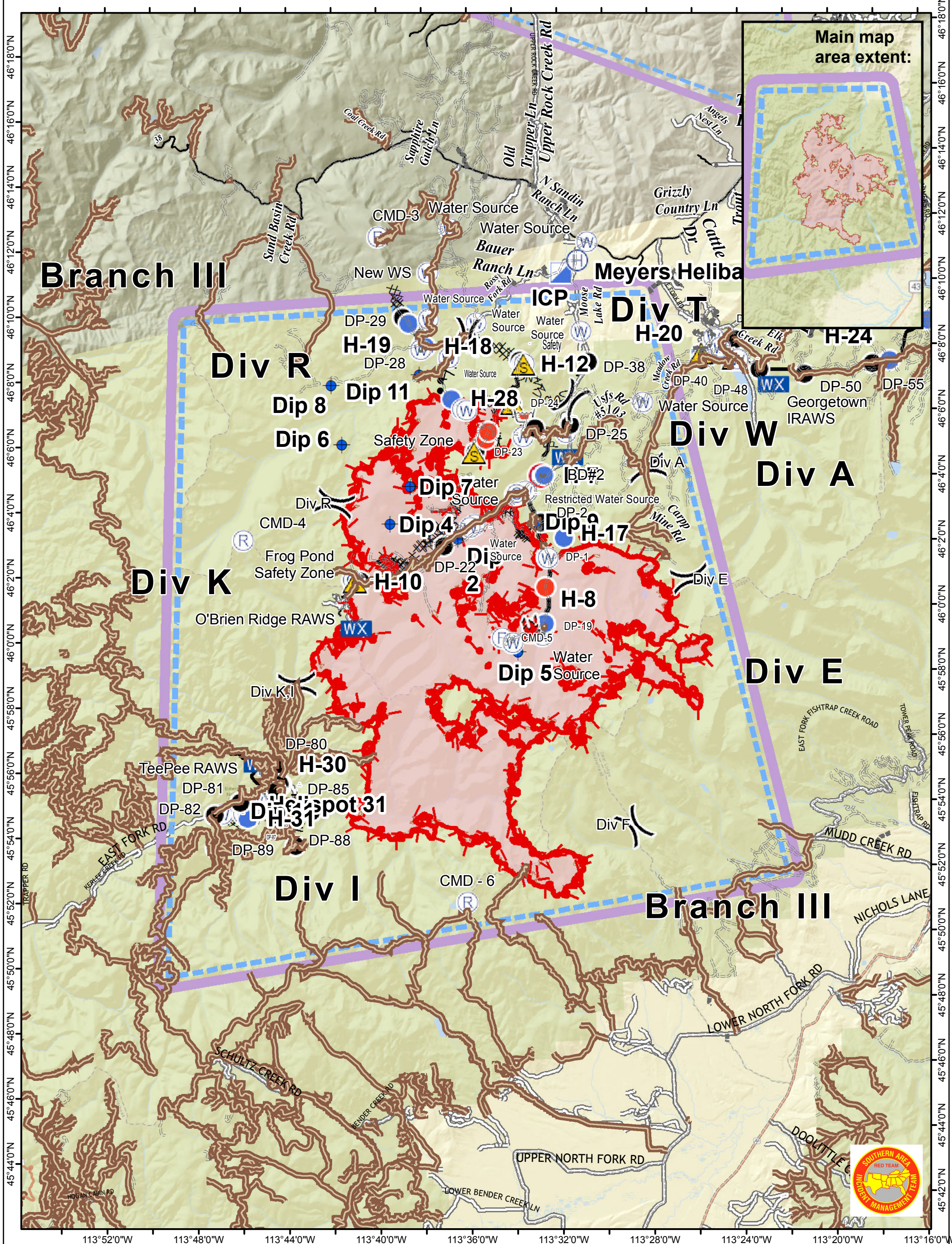


Air Operations Pilot Map - Branch III

9/13/2017

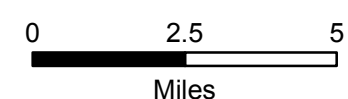


Meyers Sapphire Complex

MT-BDF-002217

Fire Perimeter as of
9/11/2017 1603
Goat Creek: 8,300 acers
Sliderock: 900 acers

- | | | | | | |
|--|--|--|--|--|--|
| | | | | | |
| | | | | | |
| | | | | | |
| | | | | | |
| | | | | | |



MEYERS PILOT LOCATION INFORMATION Updated September 9, 2017

Name	Type	Fire	Latitude	Longitude	Elevation	IGE / OGE	Remarks
Babcock Dip		Sapphire Complex	N 46° 39.222'	W 113° 39.456'			6000 gallon collapsible tank.
Beaver Dip		Sapphire Complex	N 46° 28.072'	W 113° 33.615'			
Clear Dip		Sapphire Complex	N 46° 27.816'	W 113° 30.219'			
Dip 2		Meyers	N 46° 2.654'	W 113° 35.354'			
Dip 4		Meyers	N 46° 3.195'	W 113° 38.317'			
Dip 5		Meyers	N 45° 59.096'	W 113° 32.922'			
Dip 6		Meyers	N 46° 5.696'	W 113° 40.308'			
Dip 7		Meyers	N 46° 4.329'	W 113° 37.372'			
Dip 8		Meyers	N 46° 7.530'	W 113° 40.664'			
Dip 9		Meyers	N 46° 3.080'	W 113° 31.879'			
Dip 11		Meyers	N 45° 54.584'	W 113° 45.396'			Add from air ops coordinate table
Dip 11		Meyers	N 46° 7.750'	W 113° 36.760'			Moose Lake Dip, added by AirOps.
GrizDip1		Slide Rock	N 46° 34.121'	W 113° 39.091'			
GrizDip2		Slide Rock	N 46° 34.070'	W 113° 39.091'			
Harvey Dip		Sapphire Complex	N 46° 34.869'	W 113° 34.462'			
Hogback Dip		Sapphire Complex	N 46° 24.577'	W 113° 42.152'			Type I. Good depth
Miner Dip		Sapphire Complex	N 46° 23.927'	W 113° 30.253'			Dipsite for water
Papa Dip		Sapphire Complex	N 46° 21.281'	W 113° 37.764'			Pond with good depth.
Sawmill Dip		Sapphire Complex	N 46° 36.701'	W 113° 39.346'			
Windlass Dip		Sapphire Complex	N 46° 21.317'	W 113° 37.366'			
Name	Type	Fire	Latitude	Longitude	Elevation	IGE / OGE	Remarks
Meyers Helibase		Sapphire Complex	N 46° 11.051'	W 113° 29.571'	5400'		
H-01		Slide Rock	N 46° 34.802'	W 113° 34.787'			
H-02		Slide Rock	N 46° 39.160'	W 113° 39.332'			
H-04		Sapphire Complex	N 46° 40.553'	W 113° 35.817'			
H-06		Sapphire Complex	N 46° 38.456'	W 113° 35.097'			
H-07		Meyers	N 46° 4.502'	W 113° 31.441'			
H-07		Sapphire Complex	N 46° 39.083'	W 113° 31.377'			
H-08		Meyers	N 45° 59.963'	W 113° 31.703'			
H-09		Sapphire Complex	N 46° 36.437'	W 113° 25.723'			
H-10		Meyers	N 46° 1.532'	W 113° 39.998'			
H-10		Sapphire Complex	N 46° 35.805'	W 113° 34.538'			H-10 Type 2&3; Excellent for multiple Rotor-wing
H-11		Sapphire Complex	N 46° 36.127'	W 113° 32.653'			Dust abatement required prior to landing
H-12		Meyers	N 46° 7.948'	W 113° 32.224'			DIV T, End of Dozer Line
H-12		Sapphire Complex	N 46° 35.312'	W 113° 32.237'			
H-13		Sapphire Complex	N 46° 35.508'	W 113° 32.318'			
H-14		Sapphire Complex	N 46° 31.110'	W 113° 30.650'			
H-15		Sapphire Complex	N 46° 29.219'	W 113° 30.981'			
H-16		Little Hogback	N 46° 26.120'	W 113° 30.920'			1 acre site with heavy equipment staging.
H-17		Meyers	N 46° 2.564'	W 113° 30.694'			Old Dominion helispot
H-17		Sapphire Complex	N 46° 22.498'	W 113° 31.770'			
H-18		Meyers	N 46° 8.610'	W 113° 36.450'			DIV R; near DP-28
H-18		Sapphire Complex	N 46° 21.505'	W 113° 32.533'			
H-19		Meyers	N 46° 9.348'	W 113° 37.123'			
H-19		Sapphire Complex	N 46° 21.547'	W 113° 33.252'			
H-20		Meyers	N 46° 8.044'	W 113° 24.291'			
H-20		Sapphire Complex	N 46° 22.920'	W 113° 39.446'			
H-21		Sapphire Complex	N 46° 24.623'	W 113° 42.064'			
H-22		Sapphire Complex	N 46° 25.680'	W 113° 43.421'			
H-23		Sapphire Complex	N 46° 21.625'	W 113° 37.763'			
H-24		Meyers	N 46° 7.567'	W 113° 15.995'			
H-24		Sapphire Complex	N 46° 28.721'	W 113° 46.641'			
H-25		Meyers	N 46° 9.878'	W 113° 12.695'			
H-25		Sapphire Complex	N 46° 22.804'	W 113° 38.713'			
H-26		Sapphire Complex	N 46° 22.804'	W 113° 30.206'			
H-27		Meyers	N 46° 8.763'	W 113° 14.209'			
H-27		Sapphire	N 46° 22.081'	W 113° 36.331'			
H-28		Meyers	N 46° 6.978'	W 113° 35.391'			Zeke's meadows helispot
H-30		Meyers	N 45° 55.363'	W 113° 43.582'			
H-31		Meyers	N 45° 54.340'	W 113° 45.114'			
Name	Type	Fire	Latitude	Longitude	Elevation	IGE / OGE	Remarks
Aircraft Link		Sapphire Complex	N 46° 25.167'	W 113° 26.800'			EL 7955
CMD-3		Meyers	N 46° 12.031'	W 113° 38.343'			Command 3 - Emerine Mtn
CMD-4		Meyers	N 46° 2.895'	W 113° 44.820'			Command 4 - Bare Hill
CMD-5		Meyers	N 45° 59.560'	W 113° 33.600'			Command 5 - Senate Mtn
CMD - 6		Meyers	N 45° 51.490'	W 113° 35.630'			
Soloman Peak CMD 7		Goat Creek	N 46° 37.534'	W 113° 44.873'			EL 7593
Quigg Peak CMD 8		Little Hogback	N 46° 28.918'	W 113° 43.148'			EL 8413
Black Pine Ridge CMD 9		Little Hogback	N 46° 25.275'	W 113° 26.888'			EL 7955
CMD 10		Goat Creek	N 46° 40.893'	W 113° 28.728'			EL 5875
CMD 11		Sapphire Complex	N 46° 20.035'	W 113° 36.719'			
L-9		Meyers	N 46° 7.954'	W 113° 32.125'			Comm Site located near division "T"
Logistics Repeater		Sapphire Complex	N 46° 29.893'	W 113° 40.126'			