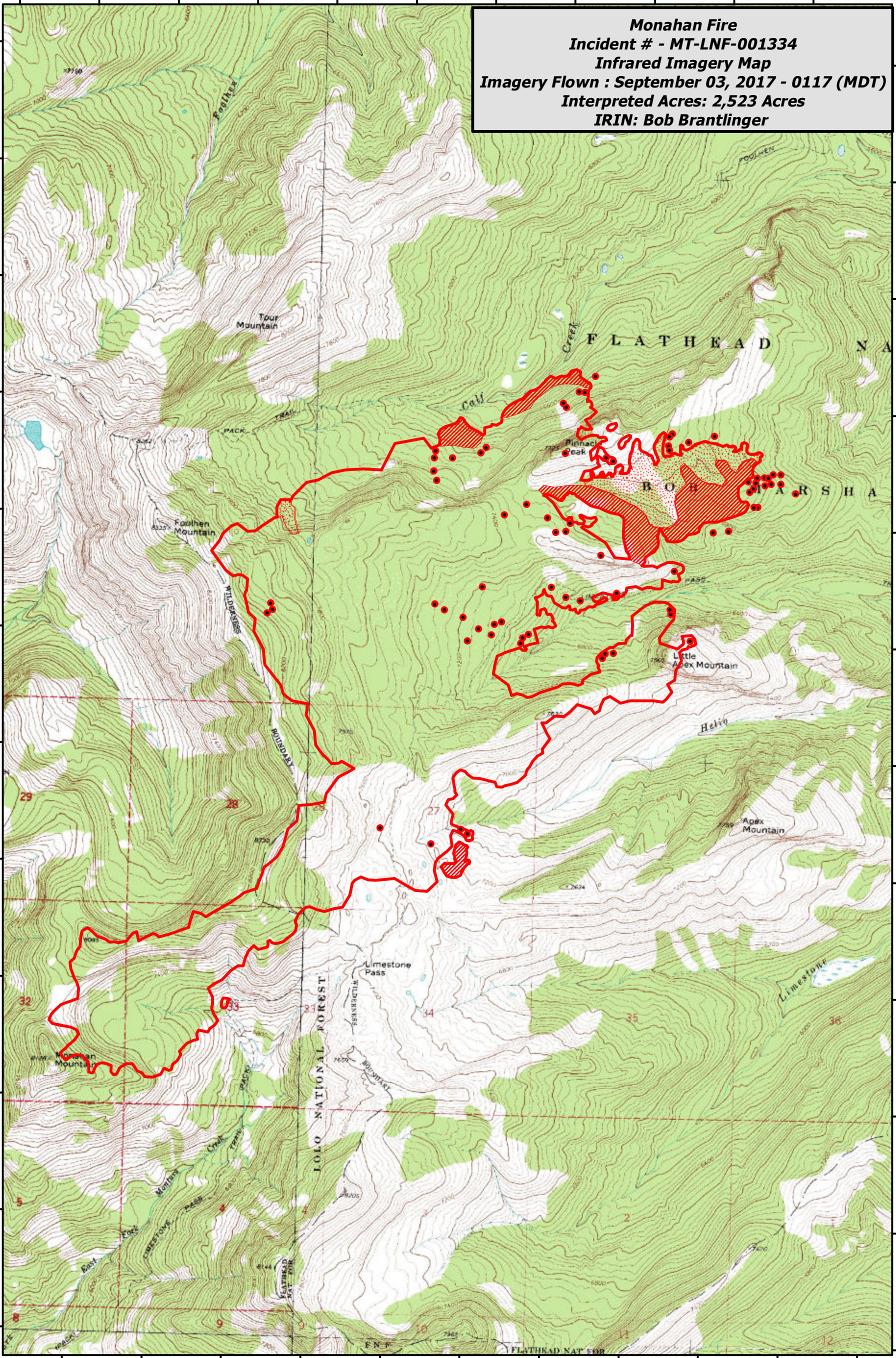


113°9'30"W 113°9'0"W 113°8'30"W 113°8'0"W 113°7'30"W 113°7'0"W 113°6'30"W 113°6'0"W 113°5'30"W 113°5'0"W 113°4'30"W


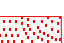


47°20'30"N
47°20'0"N
47°19'30"N
47°19'0"N
47°18'30"N
47°18'0"N
47°17'30"N
47°17'0"N
47°16'30"N
47°16'0"N
47°15'30"N
47°15'0"N

47°20'30"N
47°20'0"N
47°19'30"N
47°19'0"N
47°18'30"N
47°18'0"N
47°17'30"N
47°17'0"N
47°16'30"N
47°16'0"N
47°15'30"N
47°15'0"N

Monahan Fire
Incident # - MT-LNF-001334
Infrared Imagery Map
Imagery Flown : September 03, 2017 - 0117 (MDT)
Interpreted Acres: 2,523 Acres
IRIN: Bob Brantlinger



Legend

-  Heat Perimeter
-  Scattered Heat Source
-  Intense Heat
-  Isolated Heat Source



0 0.3 0.6 1.2 Miles

