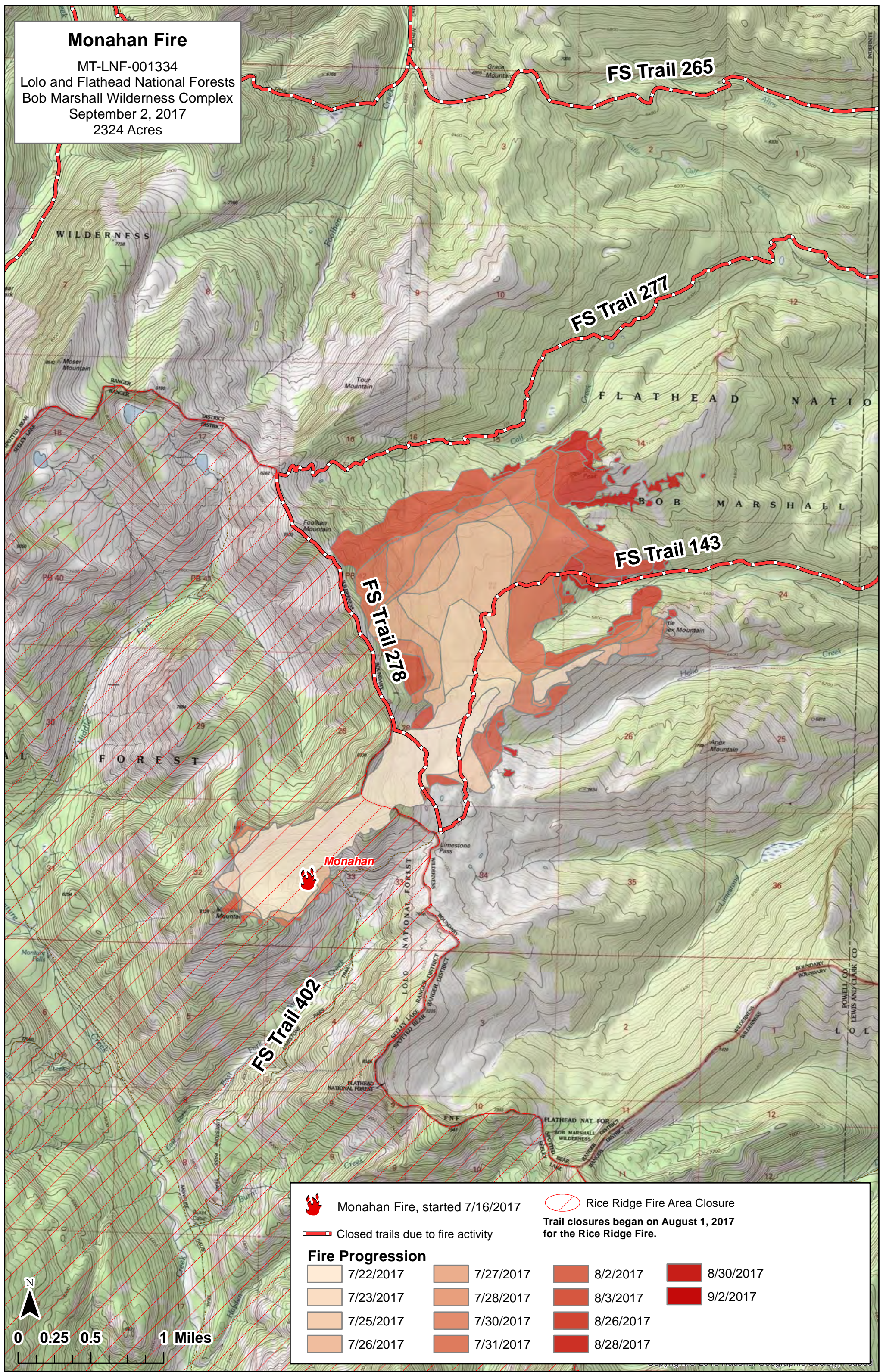


# Monahan Fire

MT-LNF-001334  
 Lolo and Flathead National Forests  
 Bob Marshall Wilderness Complex  
 September 2, 2017  
 2324 Acres



Monahan Fire, started 7/16/2017

Rice Ridge Fire Area Closure

Closed trails due to fire activity

Trail closures began on August 1, 2017 for the Rice Ridge Fire.

**Fire Progression**

	7/22/2017		7/27/2017		8/2/2017		8/30/2017
	7/23/2017		7/28/2017		8/3/2017		9/2/2017
	7/25/2017		7/30/2017		8/26/2017		
	7/26/2017		7/31/2017		8/28/2017		

